



TIM'S TECH TIPS



Understanding Dimensional Confirmation Sheets

Every order placed for a Genesis attachment will result in the issuance of a Dimensional Confirmation Sheet, DCS, to the customer/dealer. The DCS, created by Genesis engineering, contains important physical dimensions (boom/stick/linkage widths, pin diameter, pin-to-pin distances, etc.) specific to the excavator/base machine called out as the attachment carrier on the purchase order and for which the attachment mounting bracket will be built.



Upon receipt of the DCS, it is the customer/dealer's responsibility to verify the dimensions, approve the DCS with signature and return the DCS to Genesis. Until Genesis receives an approved, signed DCS, manufacturing will be postponed or suspended, and promised completion dates will be subject to adjustment.

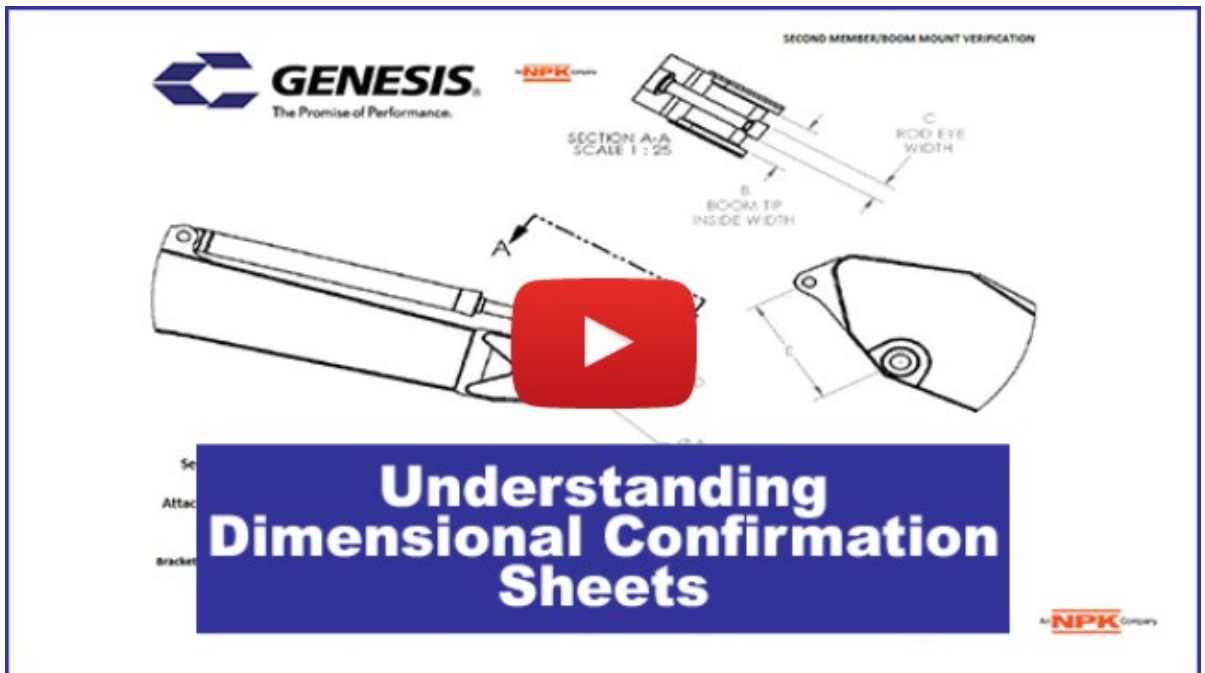
On rare occasions, a customer/dealer may receive a blank DCS. In such instances, it is the customer/dealer's responsibility to provide the dimensional information.

Why is this mandatory on all orders?

Most excavator/base machine dimensions are basic and well known to Genesis. Verification is still necessary, however, to ensure the carrier has not been modified or subjected to excessive wear by the current or a previous owner. If the dimensions provided by Genesis are not correct or even vary slightly, the customer/dealer must report these variances. This enables Genesis to modify/customize the standard design for proper fit.

It's our goal to manufacture to the highest quality and for a perfect fit, and to deliver on time. Every Genesis attachment ships with the highest confidence that it will have superior fit and finish and that installation and use can proceed without delay. Customer/dealer actions to support these commitments are critical.

In the video featured below, technical trainer Loren LaGesse explains the excavator and bracket dimensions that are required on a DCS and how to correctly measure for them.



Accurate measurements are critical! If you have any questions about measuring for a DCS, contact Tim, talseth@genesisattachments.com, 218-349-5755, or Loren, llagesse@genesisattachments.com, 715-919-8316.