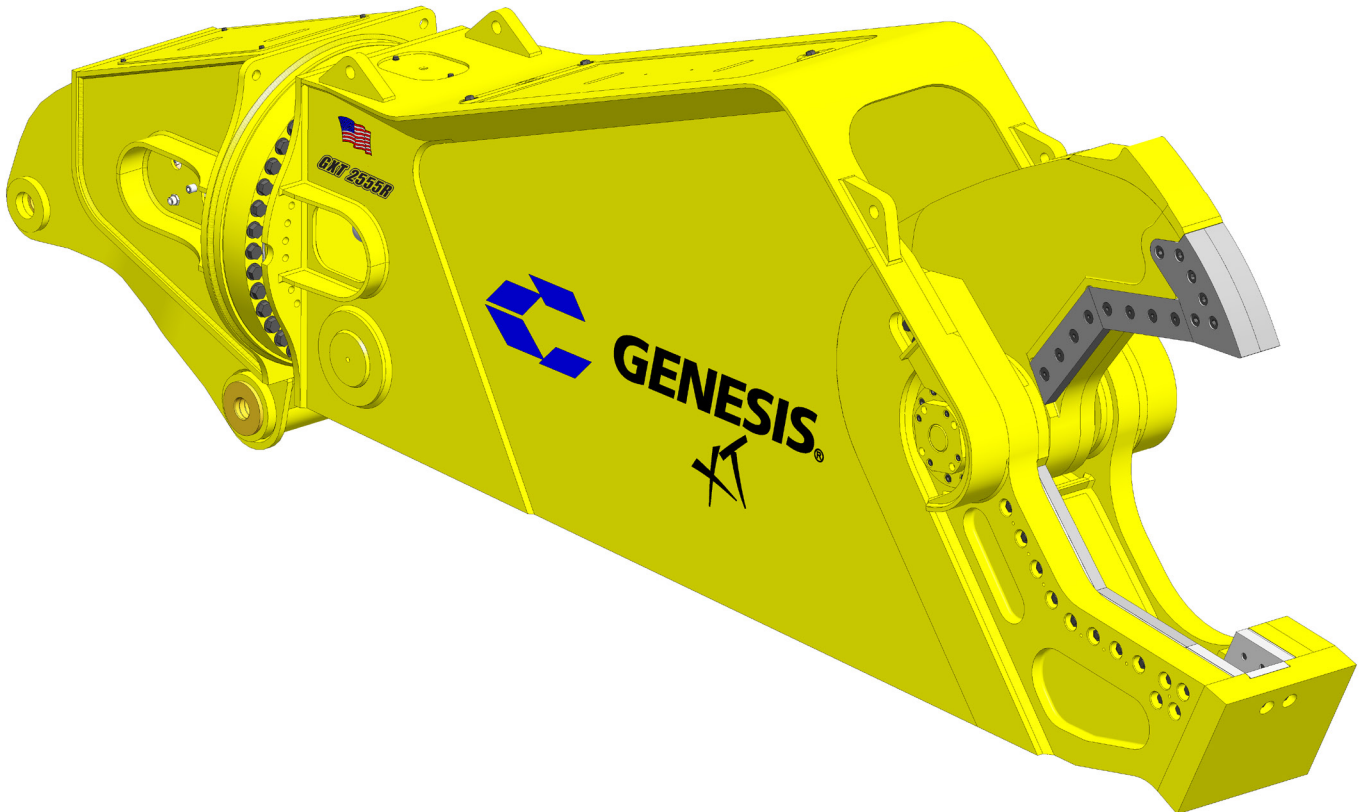


GENESIS®

The Promise of Performance.

GXT 2555R Mobile Shear

PARTS MANUAL



CONTACT INFORMATION

Genesis Attachments

1000 Genesis Drive
Superior, WI 54880 USA

Toll Free: 888-SHEAR-IT
(888-743-2748)

Phone: 715.395.5252

E-mail:
info@genesisattachments.com

Europe/Africa/Middle East Genesis GmbH

Teramostrasse 23
87700 Memmingen, Germany

Phone: +49 83 31 9 25 98 0
Fax: +49 83 31 9 25 98 80
genesis-europe.com

E-mail:
info@genesis-europe.com

Asia Pacific Representative Office

24 Upper Serangoon View #12-28
Singapore 534205

Phone: +65 9673 9730

E-mail:
tchoo@genesisattachments.com

Central America & Colombia

Cra 13A #89-38 / Ofi 613
Bogota, Colombia

Phone: +57 1 610 8160 / 795 8747

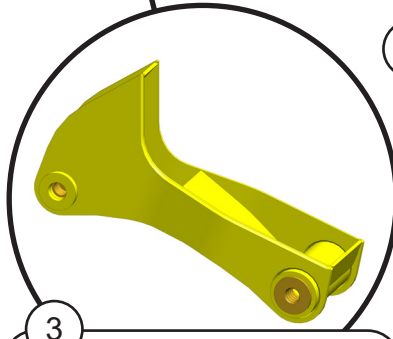
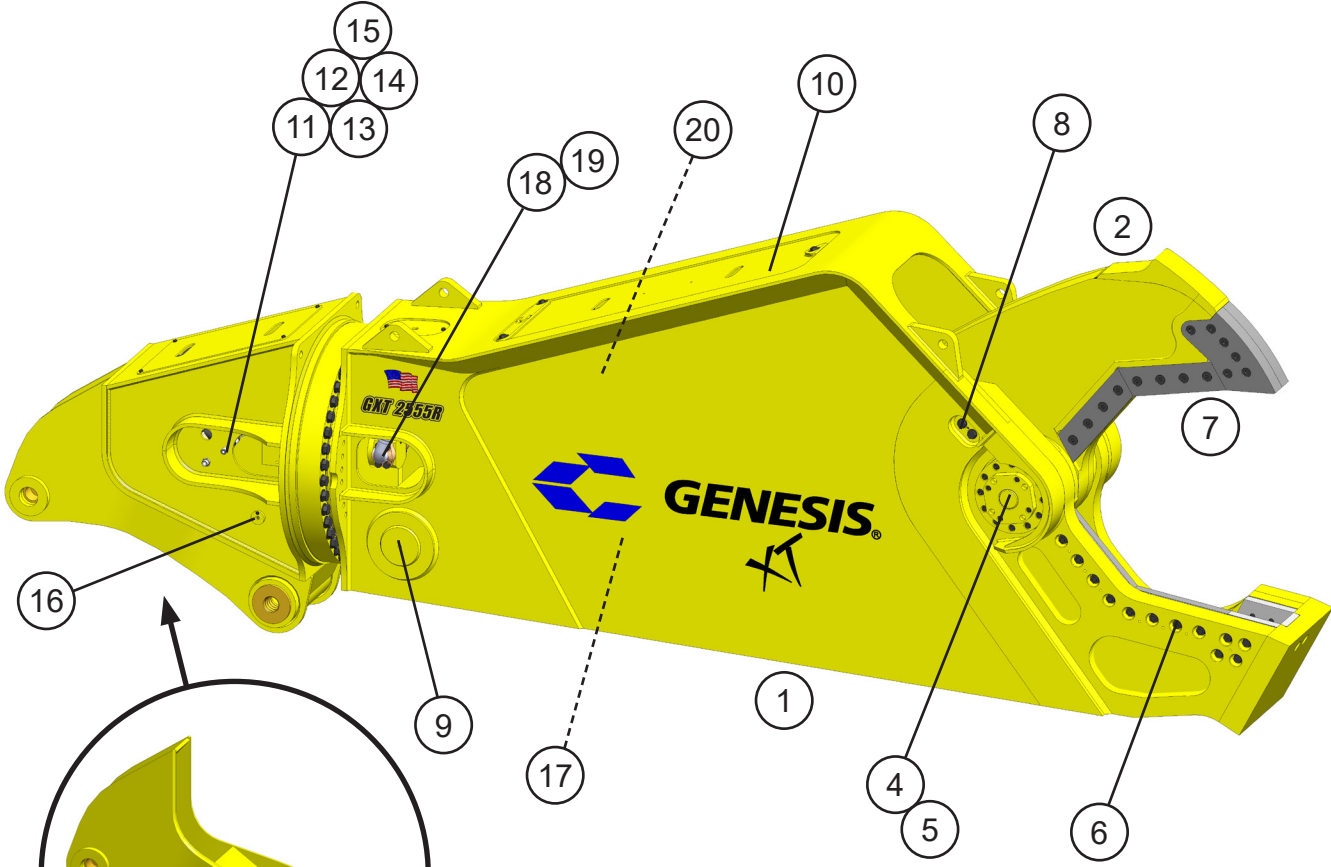
E-mail:
contact@themsagroup.com

View and download all manuals: genesisattachments.com/manuals
Patents: genesisattachments.com/products/patents

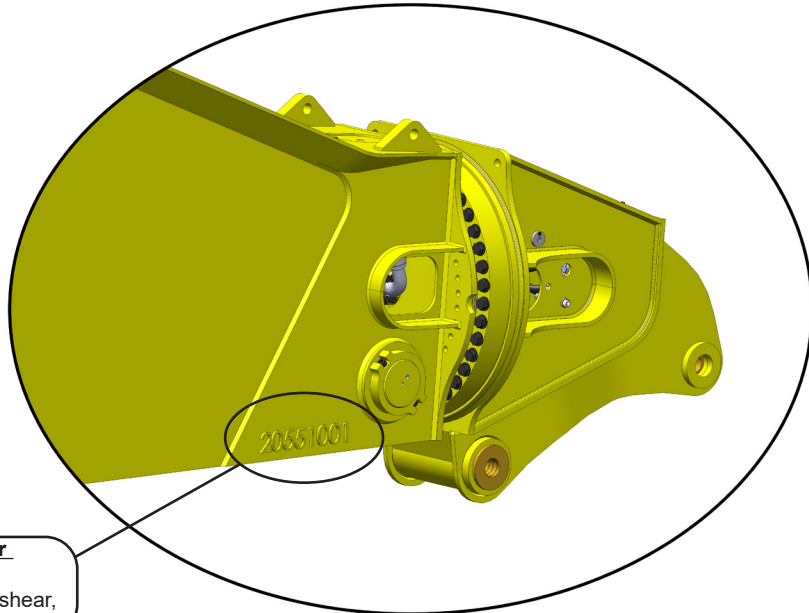
TABLE OF CONTENTS

CONTACT INFORMATION	2
GENERAL ARRANGEMENT	4
ASSEMBLY PIVOT GROUP - RIGHT SIDE	6
ASSEMBLY PIVOT GROUP - LEFT SIDE	8
ASSEMBLY LOWER BLADES	10
ASSEMBLY UPPER BLADES	12
ASSEMBLY AUTO GUIDE	14
ASSEMBLY CYLINDER PINS	16
ASSEMBLY ACCESS COVERS	18
ASSEMBLY ROTATION - PISTON MOTOR	20
ASSEMBLY ROTATION - MOTOR AND VALVE DRAIN LINES	22
ASSEMBLY ROTATION - VALVE TO VALVE PLUMBING	24
ASSEMBLY ROTATION - MOTOR MANIFOLD	26
ASSEMBLY LINE MOUNT MANIFOLD	28
ASSEMBLY ROTATION - GREASE SYSTEM PLUMBING	30
ASSEMBLY OPEN AND CLOSE CIRCUIT	32
ASSEMBLY PORT BLOCK	34
ASSEMBLY SWIVEL MANIFOLD	36
REGEN BLOCK SUB-ASSEMBLY - 6360024	38
ASSEMBLY SWIVEL MANIFOLD CONFIGURATIONS	40
BOLT TORQUE SPECIFICATIONS	41
THREAD TREATMENT DIAGRAM	42
Mobile Shears	42
PROCEDURES	43
Cleaning	43
Threadlocker	43
Anti-Seize	44
No Thread Treatment	44
BOLT TORQUE SPECIFICATIONS	45
Dry Torque Values	45
Wet Torque Values	45
O-RING BOSS & FLAT FACE O-RING TORQUE SPECIFICATIONS	46
BOLT DRIVE SPECIFICATIONS	47
WARRANTY CLAIM PROCEDURE	48
Claim Procedure	48
Blade Warranty	48
PARTS ORDER POLICY AND PROCEDURE	49
Parts Orders Should Include	49
Placing Orders	49
Part Numbers	49
Shipping	49
Invoices	49
Returns	49
Warranty Returns	49
PARTS ORDER FORM	50
INDEX	51
CONTACT INFORMATION	53

GENERAL ARRANGEMENT



3
Wtmg Lug Upper Head
 Part Number is Serial Number specific.
 For replacement parts call the Genesis
 Parts Department.
USA **Europe**
 715-395-5614 +49 83 31 9 25 98 0
 715-395-3405



Serial Number Location
 Facing the left side of shear,
 lower right corner.

GENERAL ARRANGEMENT

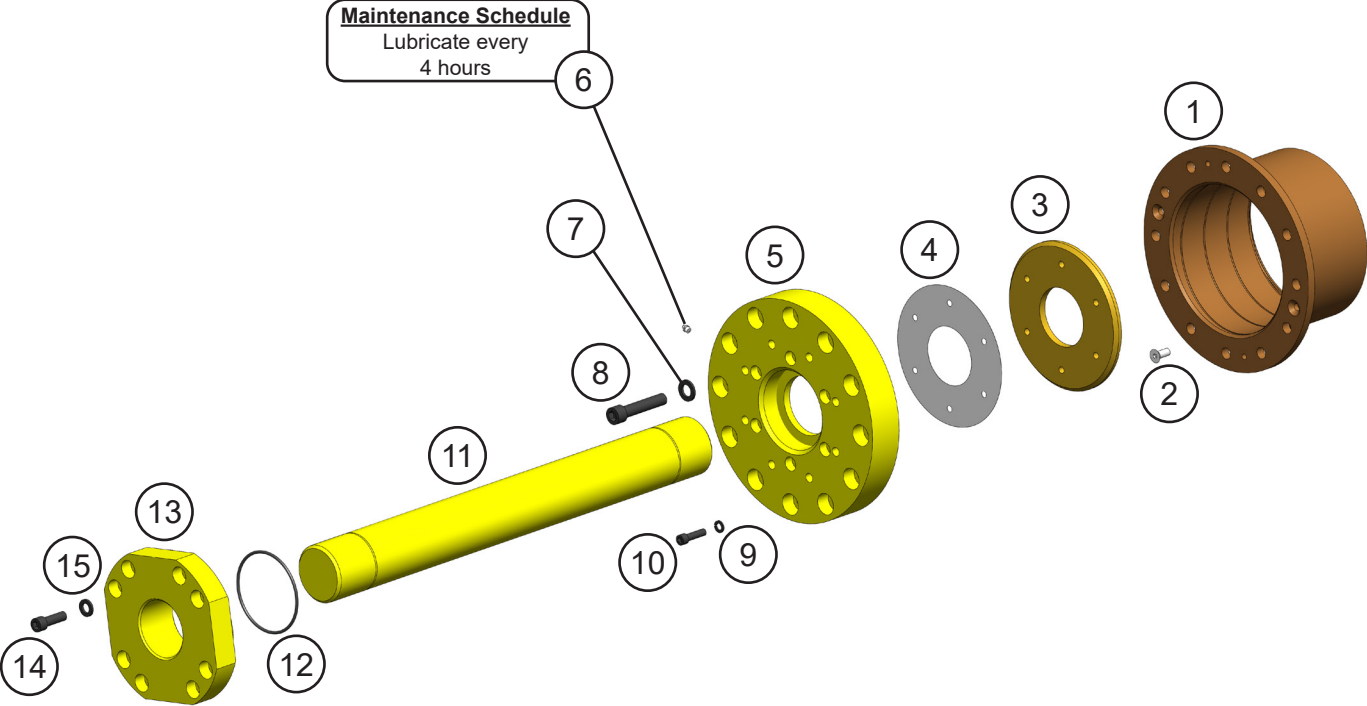
ITEM	QTY	PART NUMBER	DESCRIPTION
1	1	1107699	Wtmg Stick
2	1	1107632	Wtmg Upper
3		*	Wtmg Lug Upper Head
4		See page 6	Assembly Pivot Group - Right Side
5		See page 8	Assembly Pivot Group - Left Side
6		See page 10	Assembly Lower Blades
7		See page 12	Assembly Upper Blades
8		See page 14	Assembly Auto Guide
9		See page 16	Assembly Cylinder Pins
10		See page 18	Assembly Access Covers
11		See page 20	Assembly Rotation - Piston Motor
12		See page 22	Assembly Rotation - Motor and Valve Drain Lines
13		See page 24	Assembly Rotation - Valve to Valve Plumbing
14		See page 26	Assembly Rotation - Motor Manifold
15		See page 28	Assembly Line Mount Manifold
16		See page 30	Assembly Rotation - Grease System Plumbing
17		See page 32	Assembly Open and Close Circuit
18		See page 34	Assembly Port Block
19		See page 36	Assembly Swivel Manifold
20		See page 38	Regen Block Sub-Assembly

* Part number is Serial Number specific. For replacement parts call the Genesis Parts Department.

USA
715-395-3488

Europe
+49 83 31 9 25 98

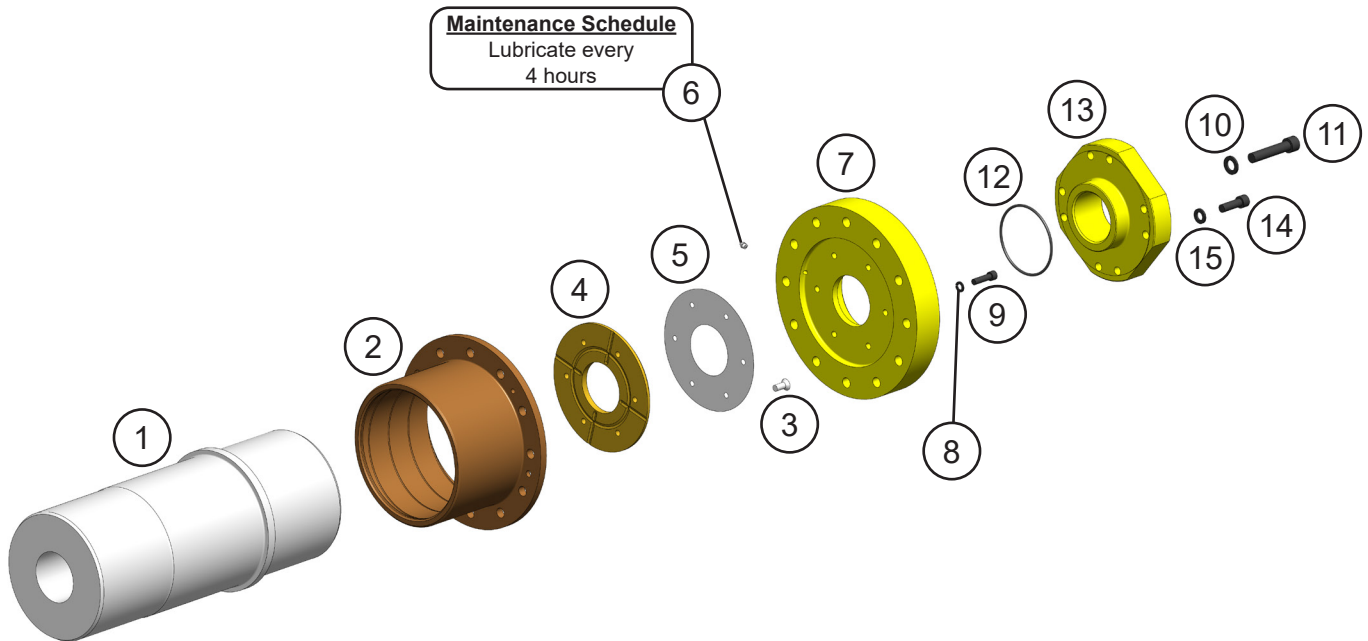
ASSEMBLY PIVOT GROUP - RIGHT SIDE



ASSEMBLY PIVOT GROUP - RIGHT SIDE

ITEM	QTY	PART NUMBER	DESCRIPTION
1	1	1107657	Mach Bearing
2	2	F0412035	Flat Head Capscrew M12 x 1.75 x 35
3	1	1104048	Mach Thrust Washer
4	1	1104049	Shim Set Thrust Washer
5	1	1104075	Mach End Cap
6	2	6200002	Grease Fitting
7	10	F1202444	Flat Washer M24
8	10	F0624080	Socket Head Capscrew M24
9	6	F1201224	Flat Washer M12
10	6	F0612050	Socket Head Capscrew M12
11	1	1107700	Mach Tie Rod
12	1	S0190357	O-Ring
13	1	1104081	Mach Tie Rod Nut
14	4	F0616050	Socket Head Capscrew M16 x 2.00 x 50
15	4	F1201630	Flat Washer M16

ASSEMBLY PIVOT GROUP - LEFT SIDE



ASSEMBLY PIVOT GROUP - LEFT SIDE

ITEM	QTY	PART NUMBER	DESCRIPTION
1	1	*	Mach Main Shaft
2	1	1107658	Mach Bearing
3	2	F0412035	Flat Head Capscrew M12
4	1	1104048	Mach Thrust Washer
5	1	1104049	Shim Set Thrust Washer
6	2	6200002	Grease Fitting
7	1	1104075	Mach End Cap
8	6	F1201224	Flat Washer M12
9	6	F0612050	Socket Head Capscrew M12 x 1.75 x 45
10	10	F1202444	Flat Washer M24
11	10	F0624080	Socket Head Capscrew M24
12	1	S0190357	O-Ring
13	1	1104081	Mach Tie Rod Nut
14	4	F0616050	Socket Head Capscrew M16 x 2.00 x 50
15	4	F1201630	Flat Washer M16

* Part number is Serial Number specific. For replacement parts call the Genesis Parts Department.

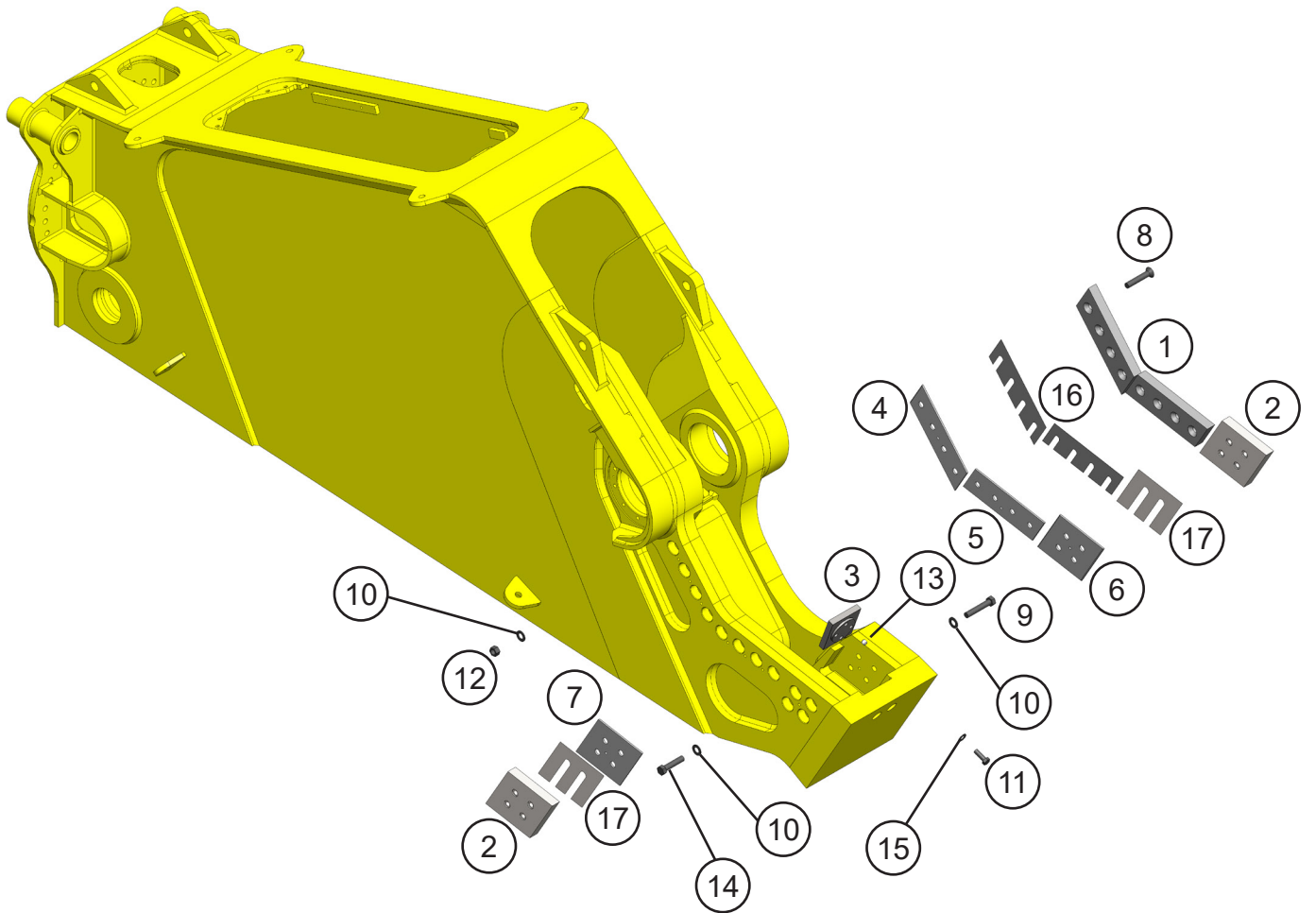
USA

715-395-3488

Europe

+49 83 31 9 25 98

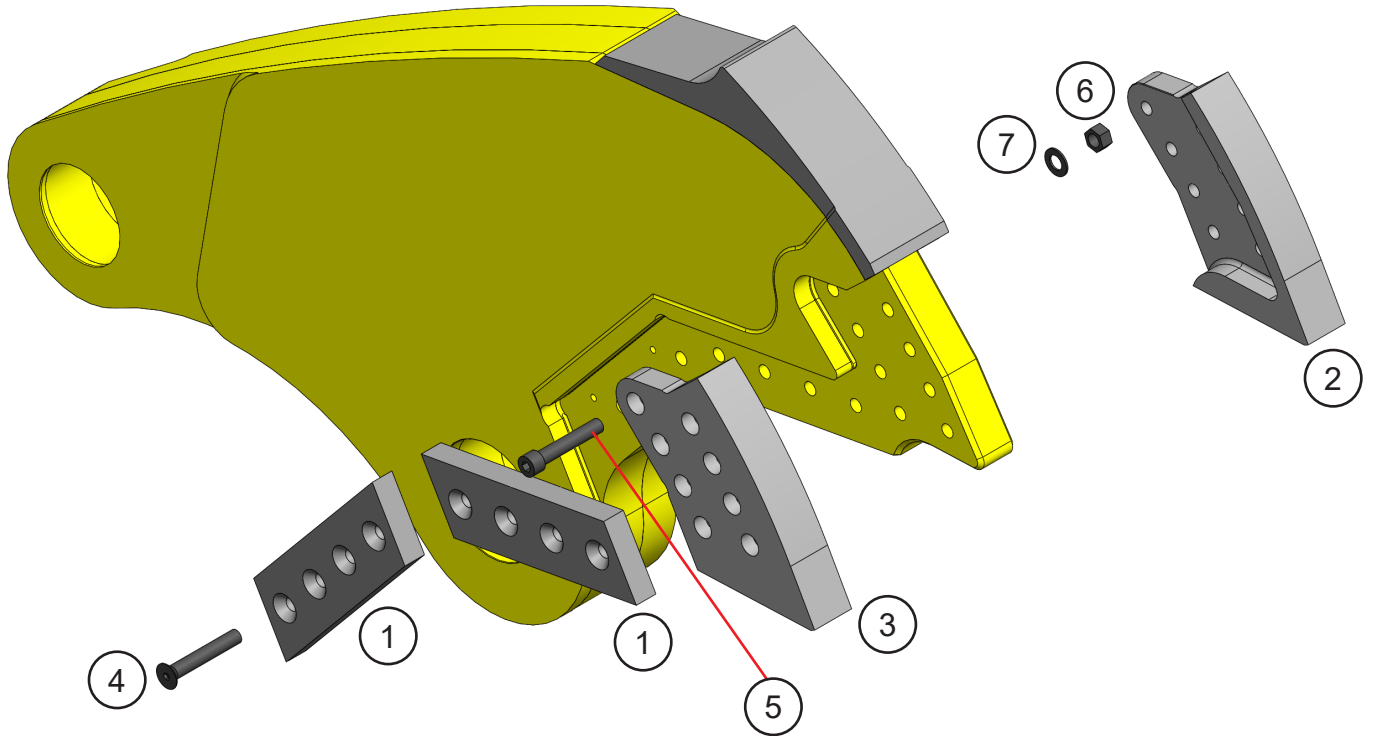
ASSEMBLY LOWER BLADES



ASSEMBLY LOWER BLADES

ITEM	QTY	PART NUMBER	DESCRIPTION
1	2	1107967	Mach Blade
2	2	1107629	Mach Guide Blade
3	1	1107630	Mach Blade Razor
4	1	1107860	Mach Adj Plate Primary
5	1	1107862	Mach Adj Plate Secondary
6	1	1107742	Mach Adj Plate Guide Blade
7	1	1107744	Mach Adj Plate Guide Blade
8	8	F0513700	Flat Head Capscrew 1¼ - 7 x 7
9	4	F0213700	Hex Head Capscrew 1¼ - 7 x 7
10	16	F1300125	Flat Washer 1¼"
11	2	F0210300	Hex Head Capscrew 1-8 x 3
12	8	F0912507	Hex Nut 1¼ - 7
13	2	F2510100	Set Screw Socket Head 1-8 x 1
14	4	F0213575	Hex Head Capscrew 1¼ - 7 x 5¾
15	2	F1300100	Flat Washer 1"
16		1107858	Shim Set Blade
17		1107660	Shim Set Guide Blade

ASSEMBLY UPPER BLADES

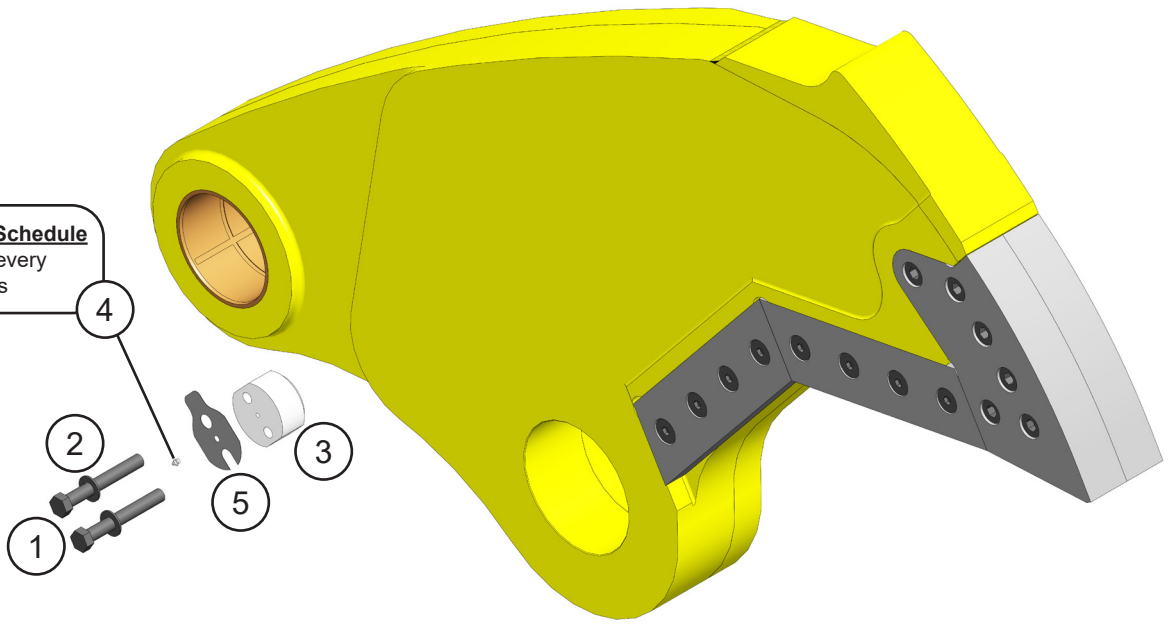


ASSEMBLY UPPER BLADES

ITEM	QTY	PART NUMBER	DESCRIPTION
1	2	1107967	Mach Blade
2	1	1107625	Mach Blade Tip Left
3	1	1107624	Mach Blade Tip Right
4	8	F0513800	Flat Head Capscrew 1¼ - 7 x 8
5	8	F0712700	Socket Head Capscrew 1¼ - 7 x 7
6	8	F0912507	Hex Nut 1¼ - 7
7	8	F1300125	Flat Washer Narrow 1¼

ASSEMBLY AUTO GUIDE

Maintenance Schedule
Lubricate every
4 hours



ASSEMBLY AUTO GUIDE

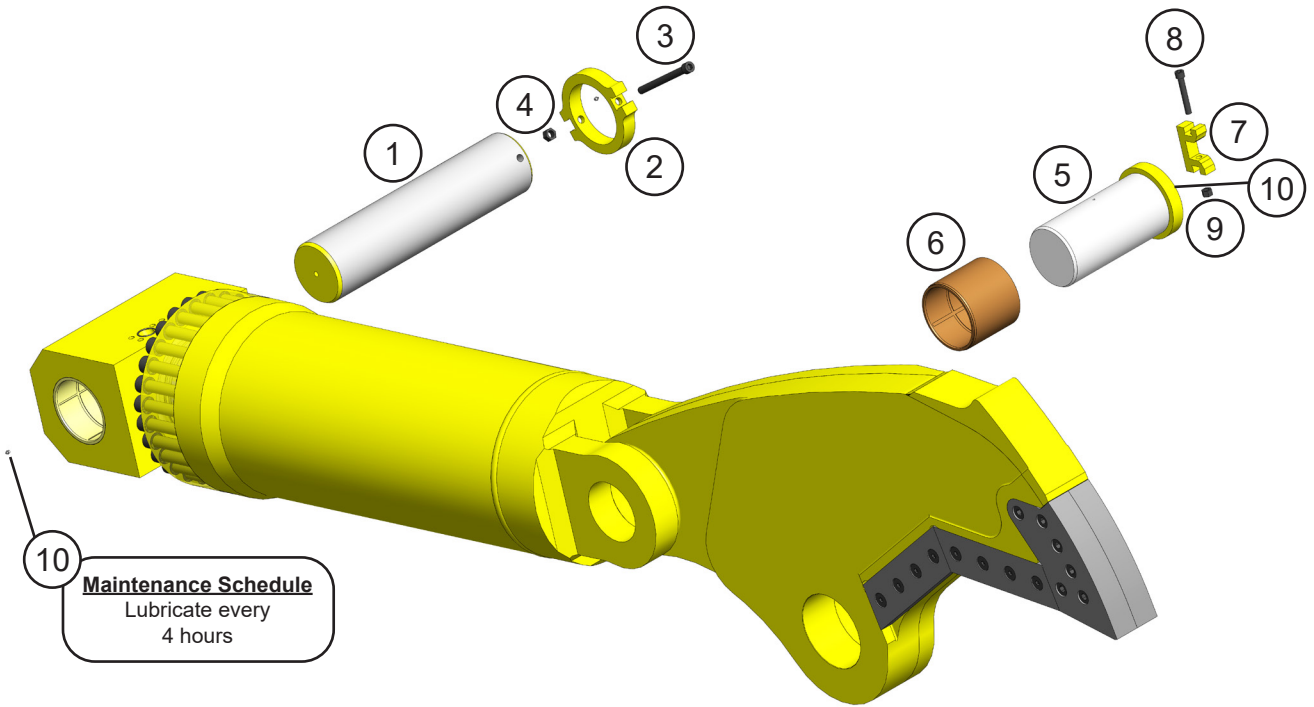
ITEM	QTY	PART NUMBER	DESCRIPTION
1	2	F0210700	Hex Head Capscrew 1 - 8 x 7
2	2	F1300100	Flat Washer Narrow 1"
3	1	*	Mach Auto Guide
4	1	6200002	Grease Fitting
5		1106478	Shim Set, Auto Guide

* Part number is Serial Number specific. For replacement parts call the Genesis Parts Department.

USA
715-395-3488

Europe
+49 83 31 9 25 98

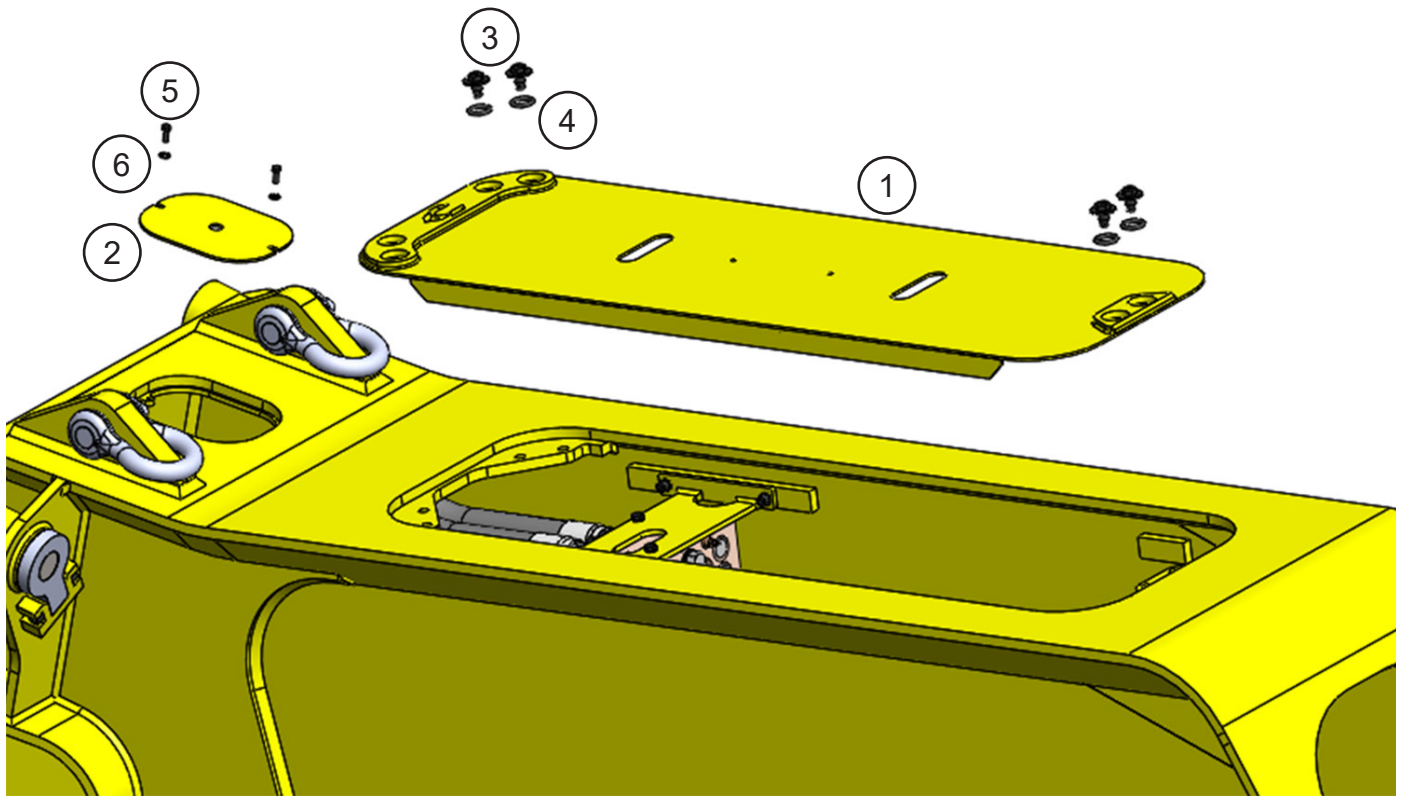
ASSEMBLY CYLINDER PINS



ASSEMBLY CYLINDER PINS

ITEM	QTY	PART NUMBER	DESCRIPTION
1	1	1107698	Mach Pin Rear
2	1	1104088	Mach Pin Keeper
3	1	F0624280	Socket Head Capscrew M24 x 3.00 x 280
4	1	F0824300	Hex Nut M24 x 3.00
5	1	1107158	Wldt Front Cylinder Pin
6	1	1107165	Mach Bearing Upper Cylinder
7	1	1102487	Mach Pin Keeper
8	1	F0620130	Socket Head Capscrew M20 x 2.50 x 130
9	1	F1020250	Nylock Nut M20 x 2.50
10	2	6200002	Grease Fitting

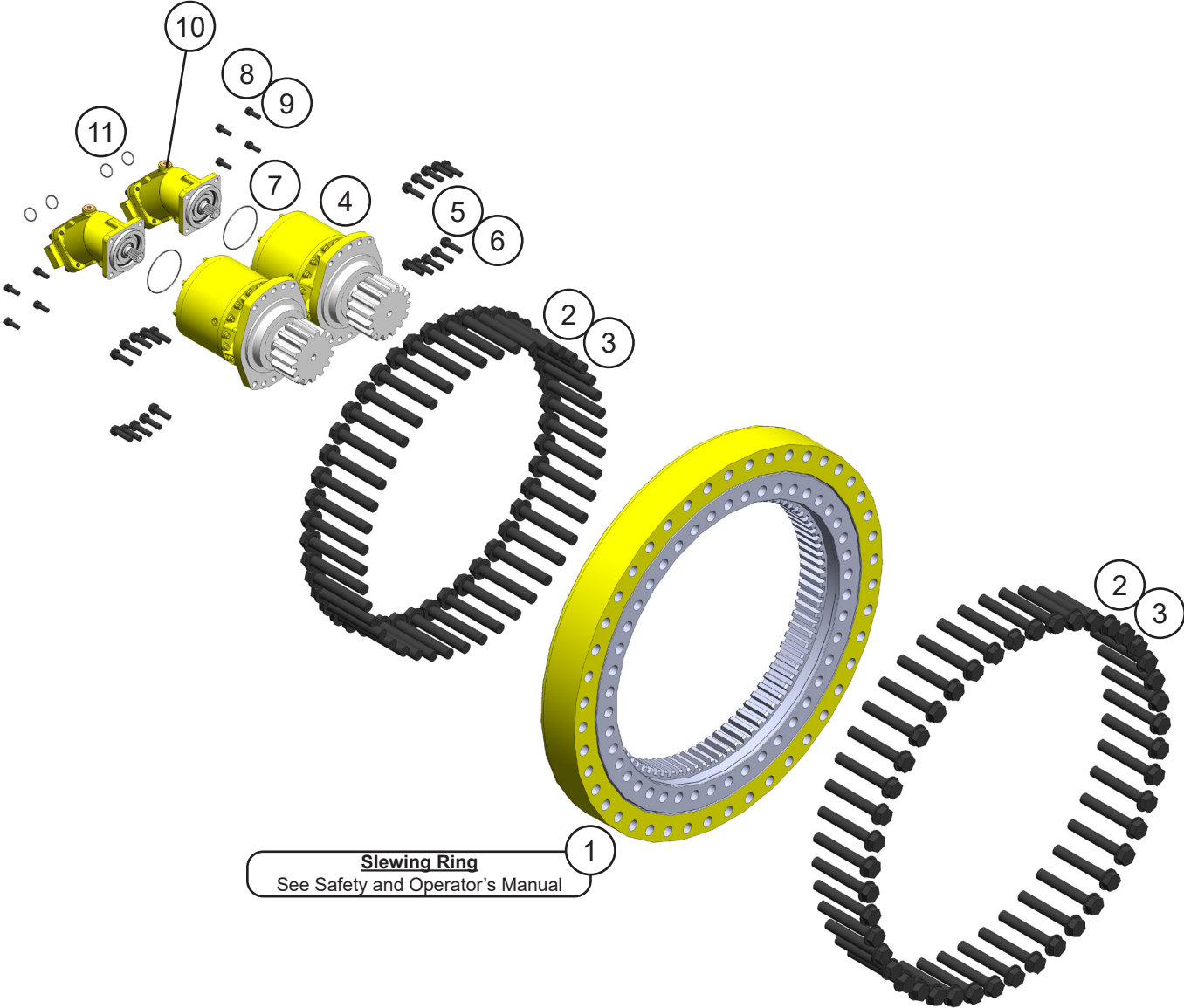
ASSEMBLY ACCESS COVERS



ASSEMBLY ACCESS COVERS

ITEM	QTY	PART NUMBER	DESCRIPTION
1	1	1107704	Wldt Cover
2	1	1107838	Plt Rear Cover
3	6	1105854	Mach Shoulder Bolt
4	6	6301112	O-Ring
5	2	F0112030	Hex Head Capscrew M12 x 1.75 x 30
6	2	F1201224	Flat Washer M12

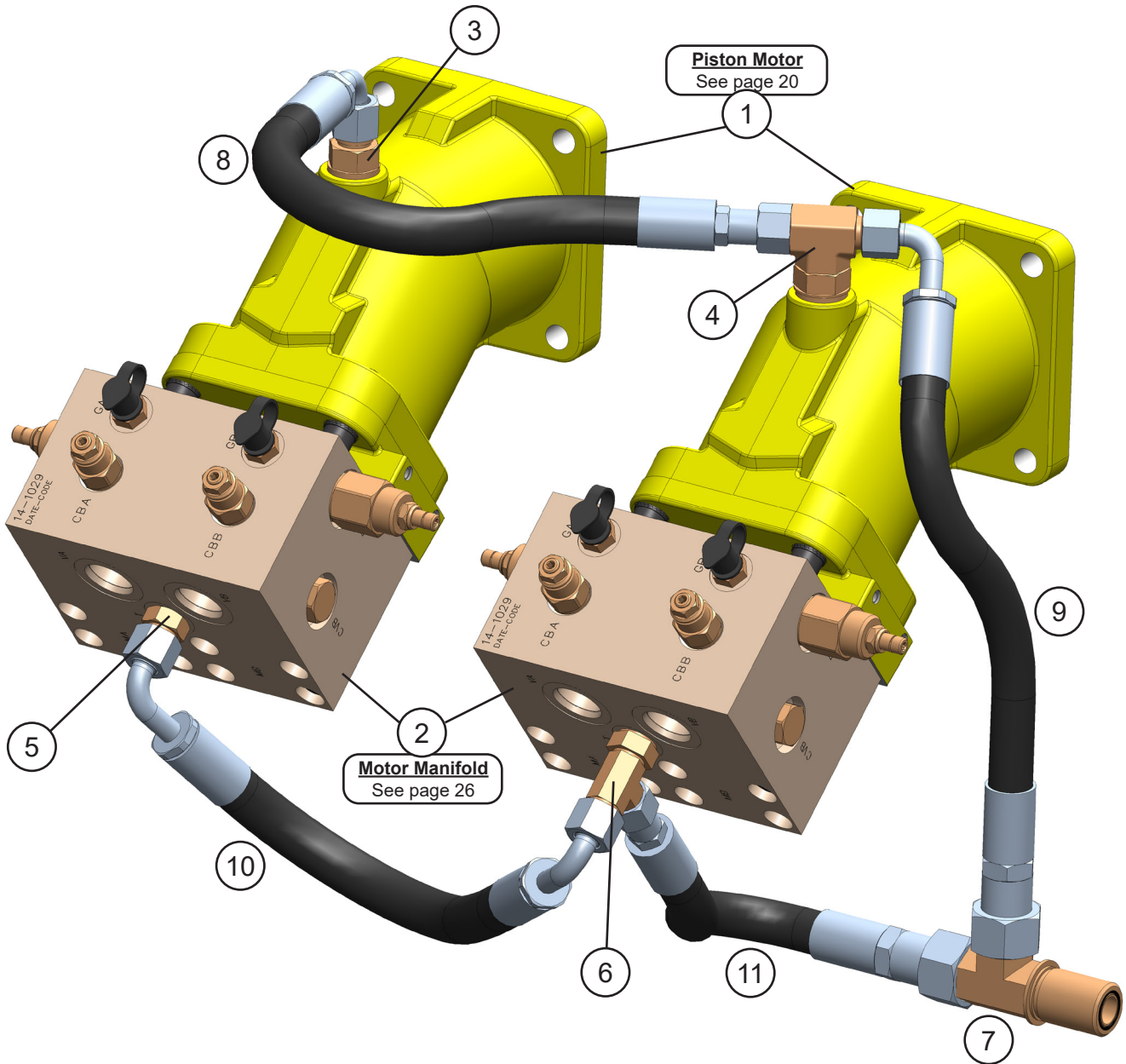
ASSEMBLY ROTATION - PISTON MOTOR



ASSEMBLY ROTATION - PISTON MOTOR

ITEM	QTY	PART NUMBER	DESCRIPTION
1	1	6301223	Bearing Slewing
2	80	F0215800	Hex Head Capscrew 1½ - 6 x 8
3	80	F2803900	Hytorc Washer M39
4	2	6360027	Gearbox
5	16	F0120060	Hex Head Capscrew M20 x 2.5 x 60
6	16	F1900075	Washer Nord-Lock ¾ and M20 Steel
7	2	S0190250	O-Ring
8	8	F0250150	Hex Head Capscrew ½ - 13 x 1½
9	8	F1900050	Washer Nord-Lock ½ and M20 Steel
10	2	6360045	Piston Motor
11	4	S0190219	O-Ring

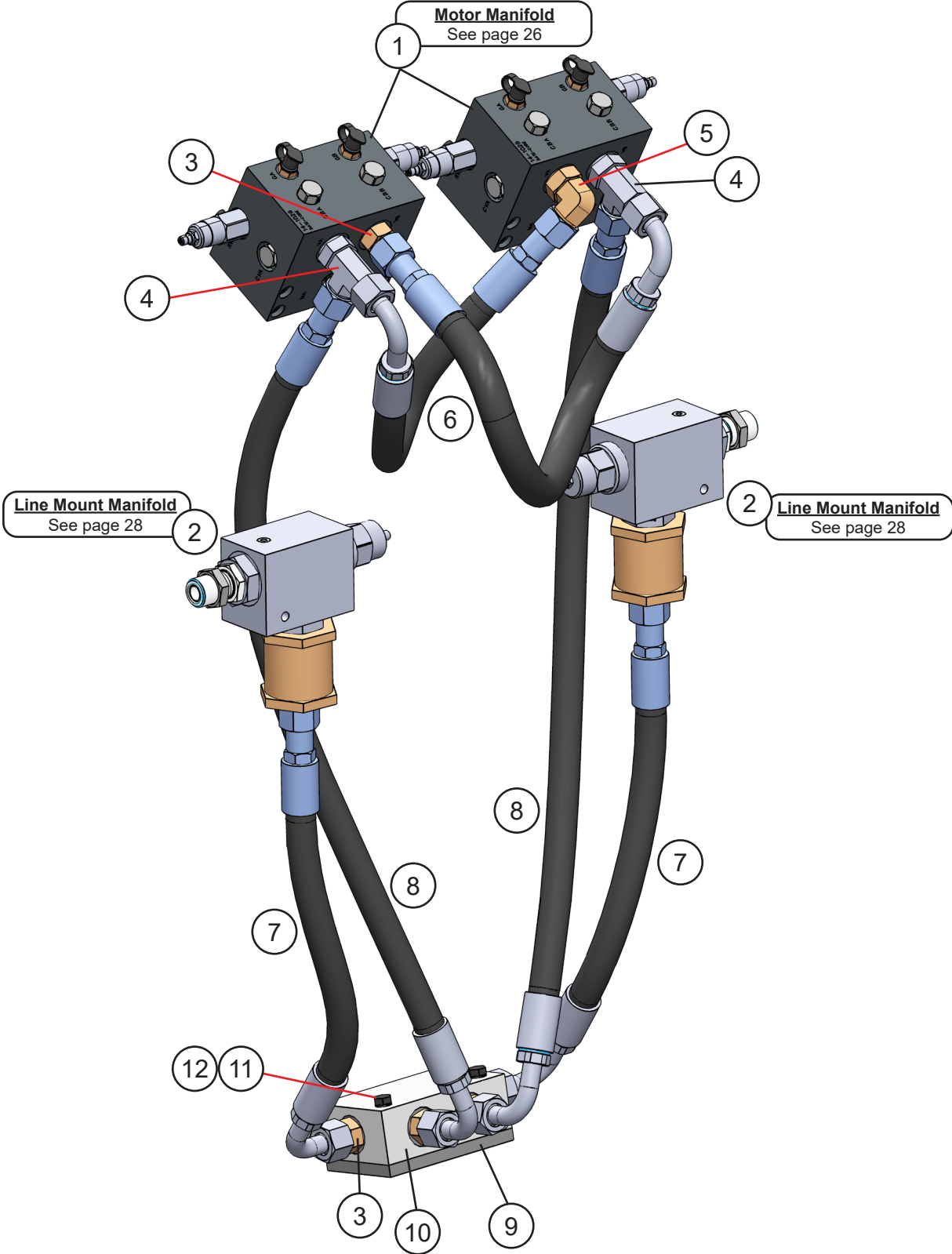
ASSEMBLY ROTATION - MOTOR AND VALVE DRAIN LINES



ASSEMBLY ROTATION - MOTOR AND VALVE DRAIN LINES

ITEM	QTY	PART NUMBER	DESCRIPTION
1	2	See page 20	Piston Motor
2	2	See page 26	Motor Manifold
3	1	6310059	Adaptor 10MB-08MO
4	1	6310188	Adaptor Run Tee 08MFS-10MORB-08MFS
5	2	6300017	Adaptor 08MB-08MO
6	1	6300406	Adaptor Run Tee 08MFS-08FOX-08MFS
7	1	6310185	Adaptor Run Tee 12MFS-12MFS-12MFS BLKHD
8	1	1107299	Hose
9	1	1107300	Hose
10	1	1107297	Hose
11	1	1107298	Hose

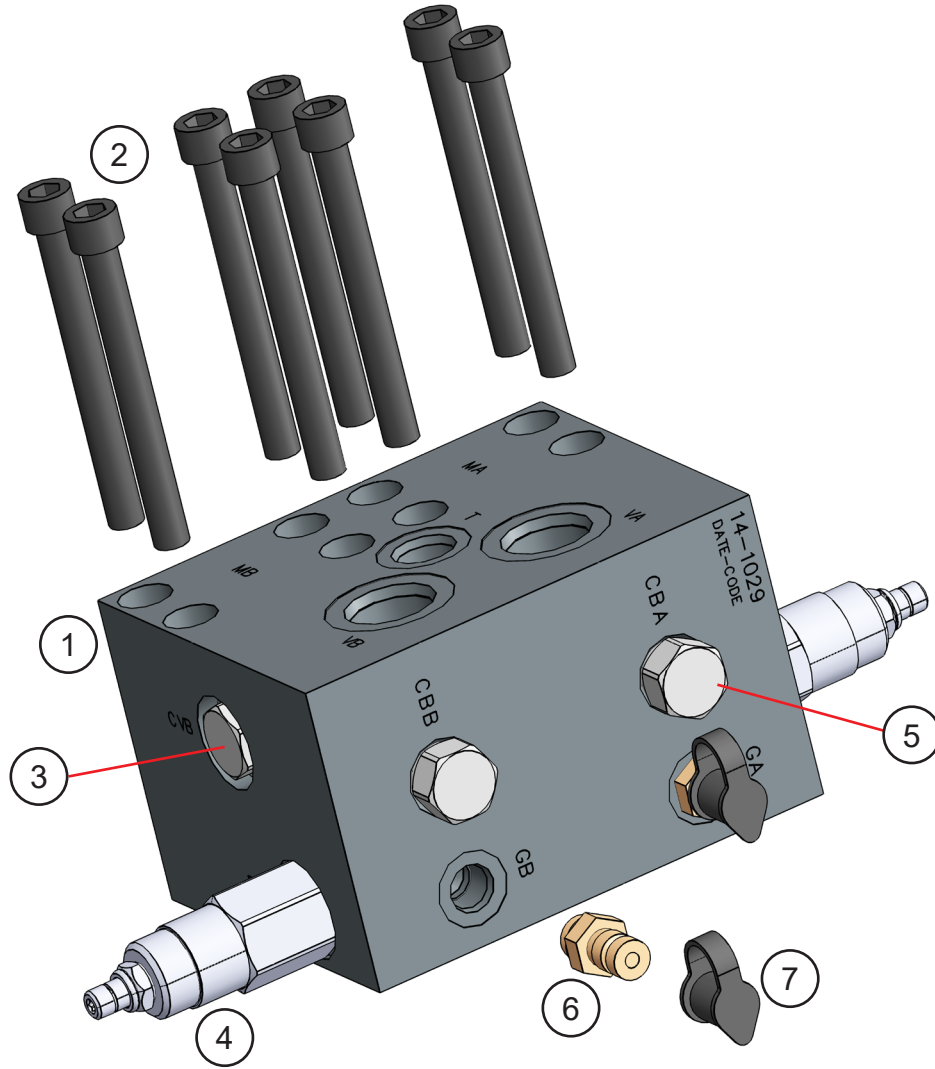
ASSEMBLY ROTATION - VALVE TO VALVE PLUMBING



ASSEMBLY ROTATION - VALVE TO VALVE PLUMBING

ITEM	QTY	PART NUMBER	DESCRIPTION
1	2	See page 26	Motor Manifold
2	2	See page 28	Line Mount Manifold
3	5	6300441	Adaptor 12MB-12MO
4	2	6310184	Adaptor Run Tee 12MFS-12MORB-12MFS
5	1	1104962	Adaptor 12MB-12MO-90
6	2	1107296	Hose
7	2	1108958	Hose
8	2	1108959	Hose
9	1	1108954	Mach Mounting Plate
10	1	6360100	Counterbalance Valve Assembly
11	2	F0110070	Hex Head Capscrew M10 x 1.5
12	2	F1900040	Washer 10mm Steel

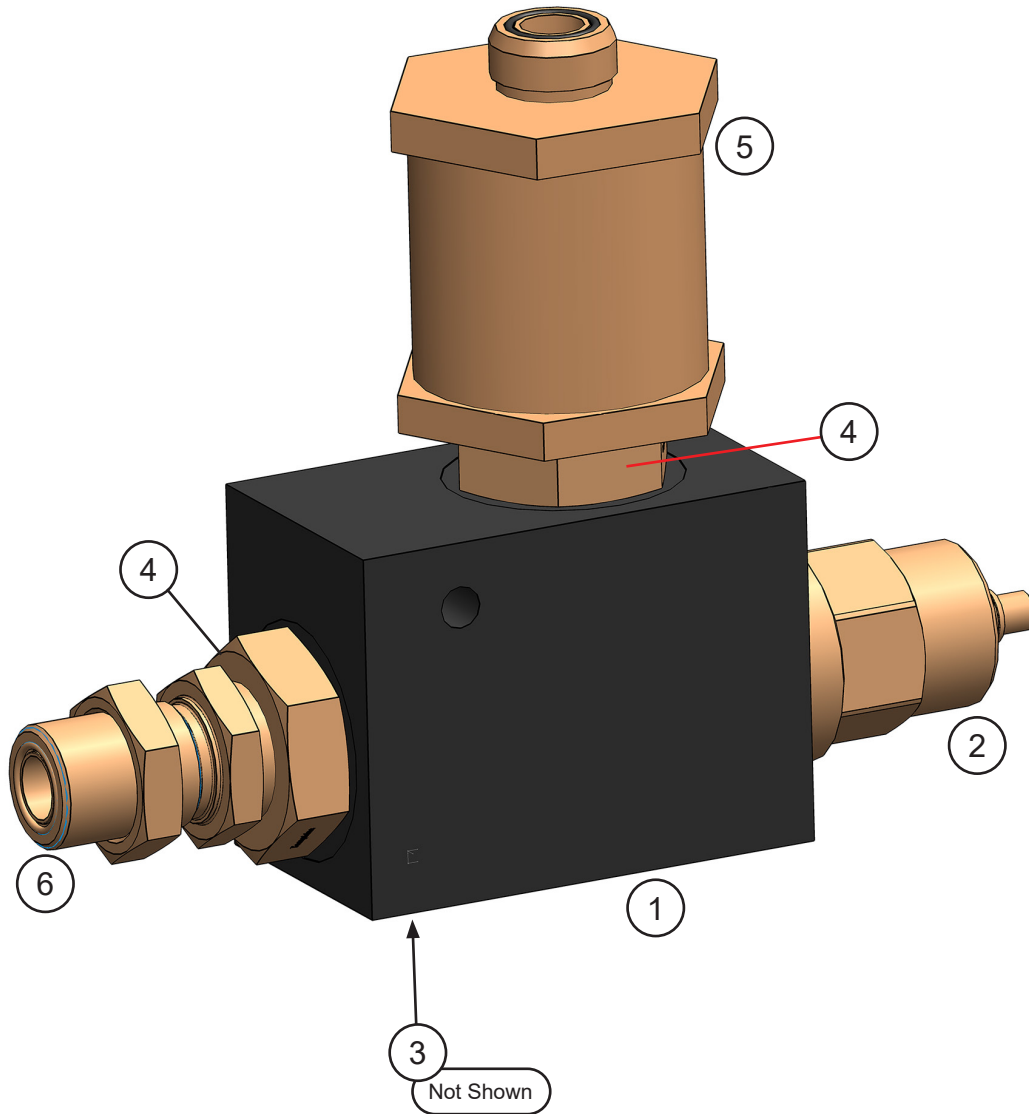
ASSEMBLY ROTATION - MOTOR MANIFOLD



ASSEMBLY ROTATION - MOTOR MANIFOLD

ITEM	QTY	PART NUMBER	DESCRIPTION
1	1	6360144	Motor Manifold
2	8	F0744400	Socket Head Capscrew 7/16 - 14 x 4
3	2	6380002	Check Valve
4	2	6360101	Relief Valve
5	2	6301253	Cavity Plug
6	2	6300014	Diagnostic Nipple 06MB
7	2	6310001	Diagnostic Nipple Dust Cap

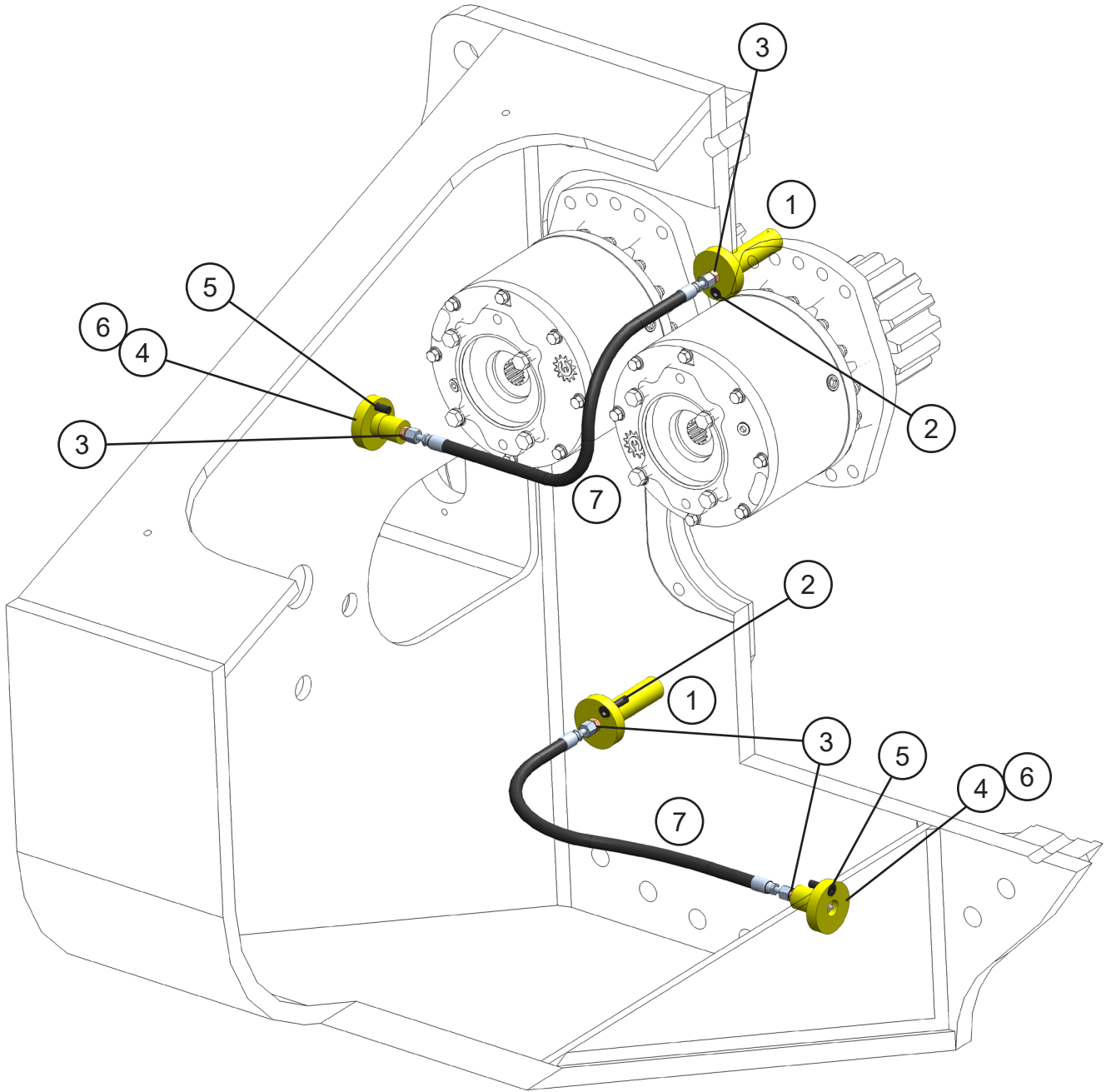
ASSEMBLY LINE MOUNT MANIFOLD



ASSEMBLY LINE MOUNT MANIFOLD

ITEM	QTY	PART NUMBER	DESCRIPTION
1	1	6300748	Manifold
2	1	6300749	Flow Control Valve
3	1	6300582	Plug 04MP
4	2	6300746	Adaptor 20MB-12FB
5	1	6301211	Filter
6	1	6310186	Adaptor 12MFS-12MO BLKHD

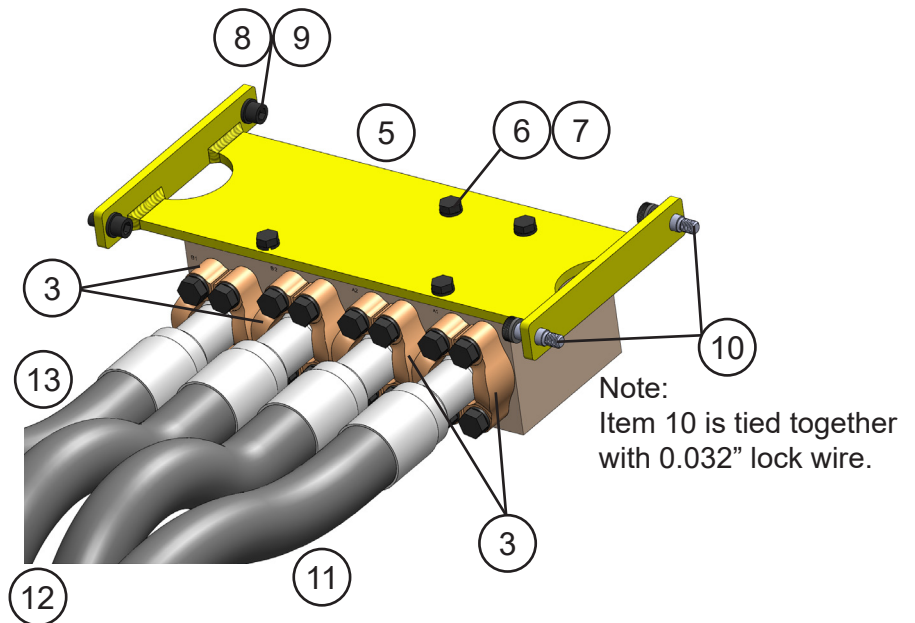
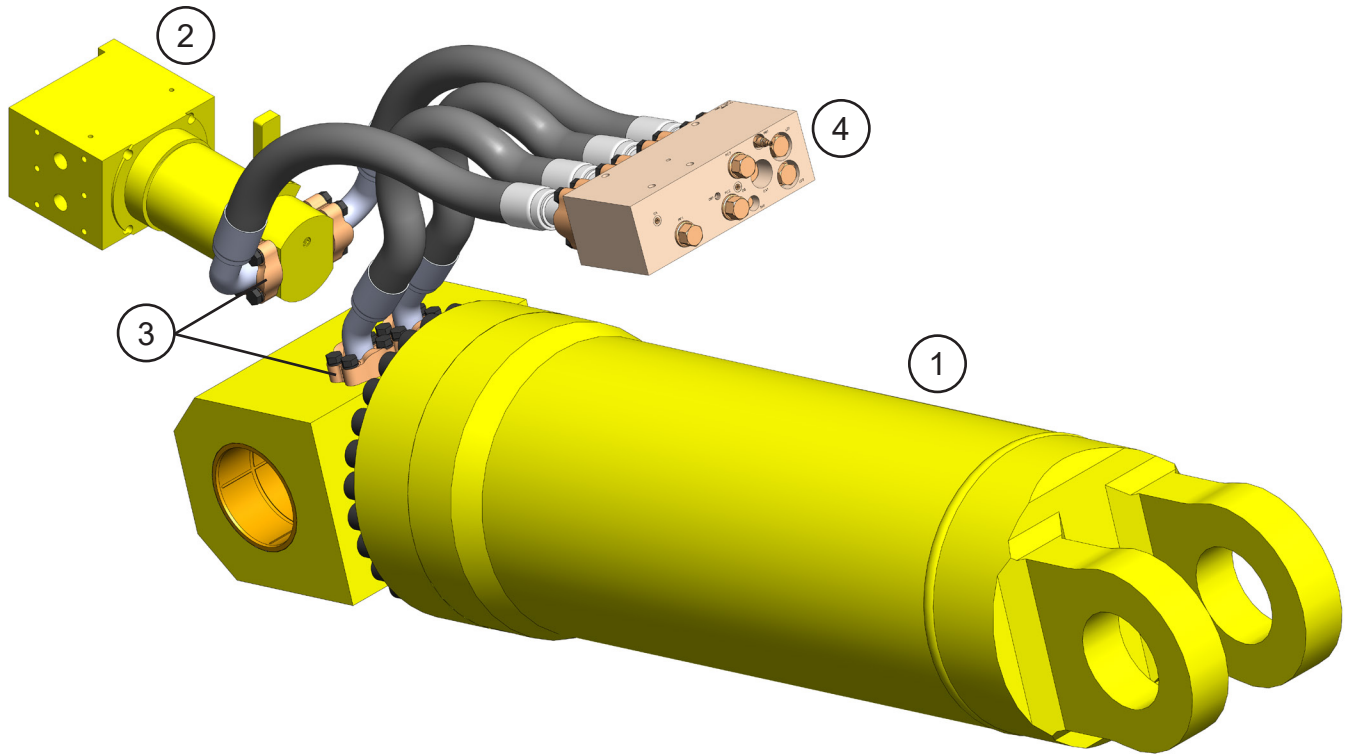
ASSEMBLY ROTATION - GREASE SYSTEM PLUMBING



ASSEMBLY ROTATION - GREASE SYSTEM PLUMBING

ITEM	QTY	PART NUMBER	DESCRIPTION
1	2	5512419	Mach Slewing Ring Grease Adaptor
2	2	F0610035	Socket Head Capscrew M10 x 1.50 x 35
3	4	6300731	Adaptor 02MP-04MO
4	2	5512411	Mach Grease Bulkhead Adaptor
5	2	F0610025	Socket Head Capscrew M10 x 1.50 x 25
6	2	6200002	Grease Fitting
7	2	1107301	Hose

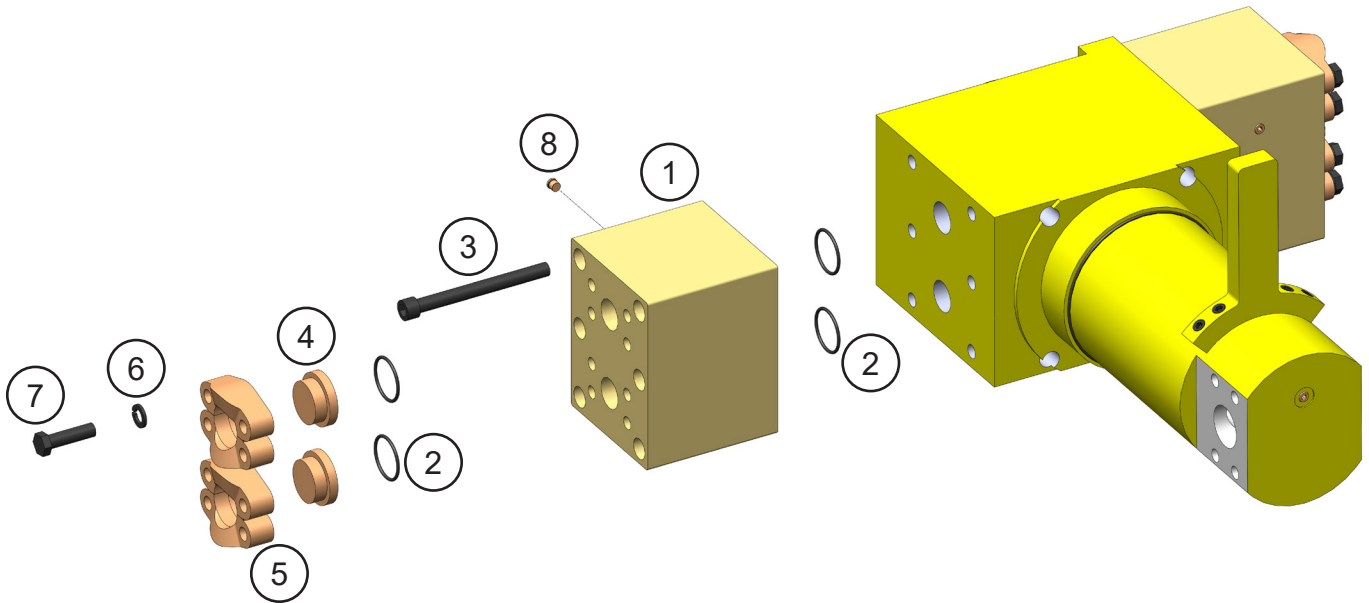
ASSEMBLY OPEN AND CLOSE CIRCUIT



ASSEMBLY OPEN AND CLOSE CIRCUIT

ITEM	QTY	PART NUMBER	DESCRIPTION
1	1	6350111	Assembly Cylinder B20.0 R13.0 S63.0
2	1	See page 38	Assembly Swivel Manifold
3	8	2" Split Flange Kit	
	2	H0662200	Split Flange Half 2.00 Code 62
	4	F0120070	Hex Head Capscrew M20-2.5 x 70
	4	F1402000	Lock Washer M20
	1	S0190228	O-Ring
4	1	6360024	Valve Regen
5	1	1107152	Mach Valve Tray
6	4	F0116040	Hex Head Capscrew M16-2.0 x 40
7	4	F1900063	Washer Nord-Lock 5/8 and M16 Steel
8	2	F0616035	Socket Head Capscrew M16-2.0 x 35
9	2	F1201630	Flat Washer M16
10	2	F3616040	Socket Head Shoulder Screw M16-2.0 x 40
11	1	1107703	Hose
12	2	1107701	Hose
13	1	1107702	Hose

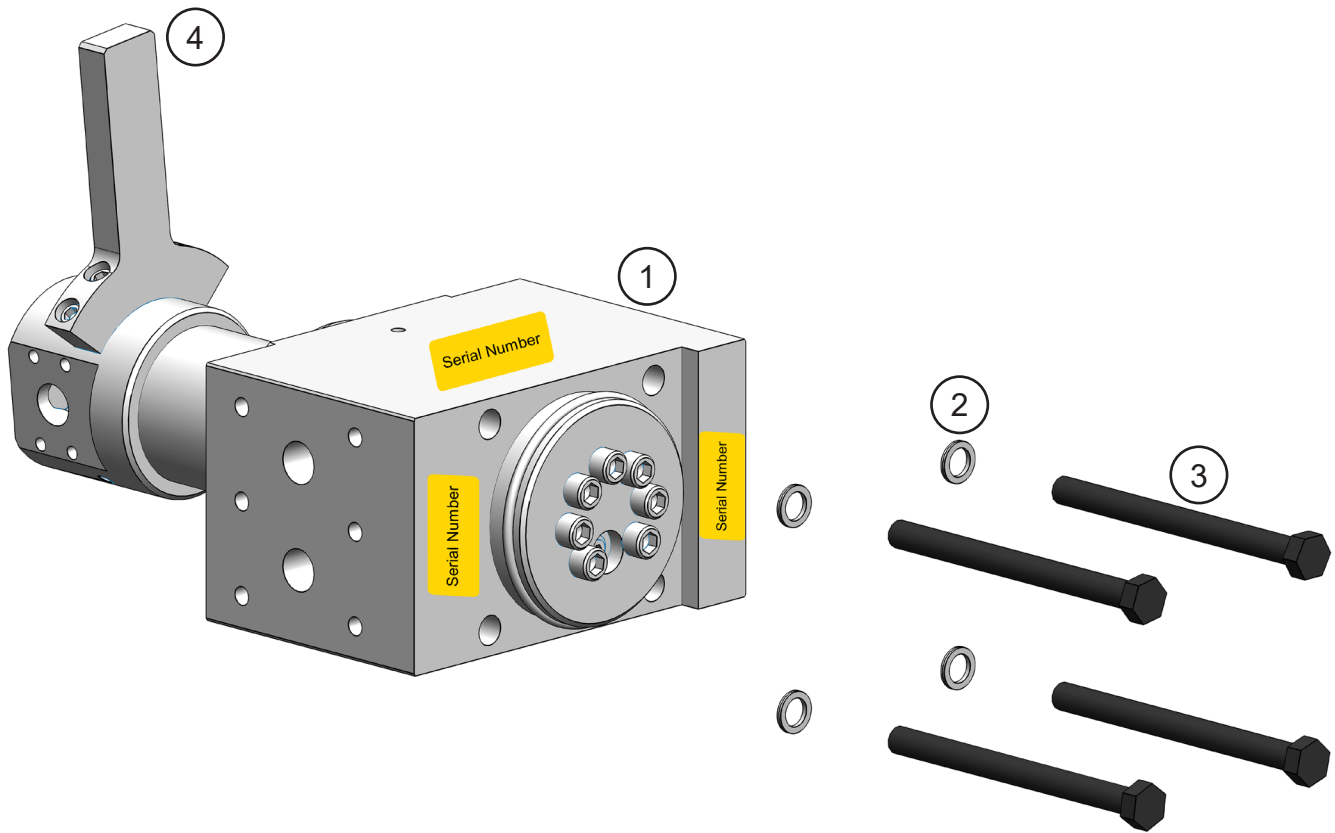
ASSEMBLY PORT BLOCK



ASSEMBLY PORT BLOCK

ITEM	QTY	PART NUMBER	DESCRIPTION
1	2	1107290	Mach Port Block
2	8	S0190225	O-Ring
3	12	F0616170	Socket Head Capscrew M16 x 2.00 x 170
4	4	H0362150	Split Flange Plug
5	8	H0262150	Split Flange Half 1.50 Code 62
6	16	F1401628	Lock Washer M16
7	16	F0116060	Hex Head Capscrew M16 x 2.00 x 60
8	2	6300076	Plug Zero-Leak 04

ASSEMBLY SWIVEL MANIFOLD



ASSEMBLY SWIVEL MANIFOLD

ITEM	QTY	PART NUMBER	DESCRIPTION
1	1	*	Assembly Swivel Manifold
2	4	F1900075	Wedge Lock Washer ¾
3	4	F0120320	Hex Head Capscrew M20 x 2.5 x 320
4	1	*	Torque Arm Kit

* Part numbers are Serial Number specific.

For replacement parts and seal kit, call the Genesis Parts Department.

The swivel Serial Number, located in one of the three highlighted areas, is required for **any** parts order.

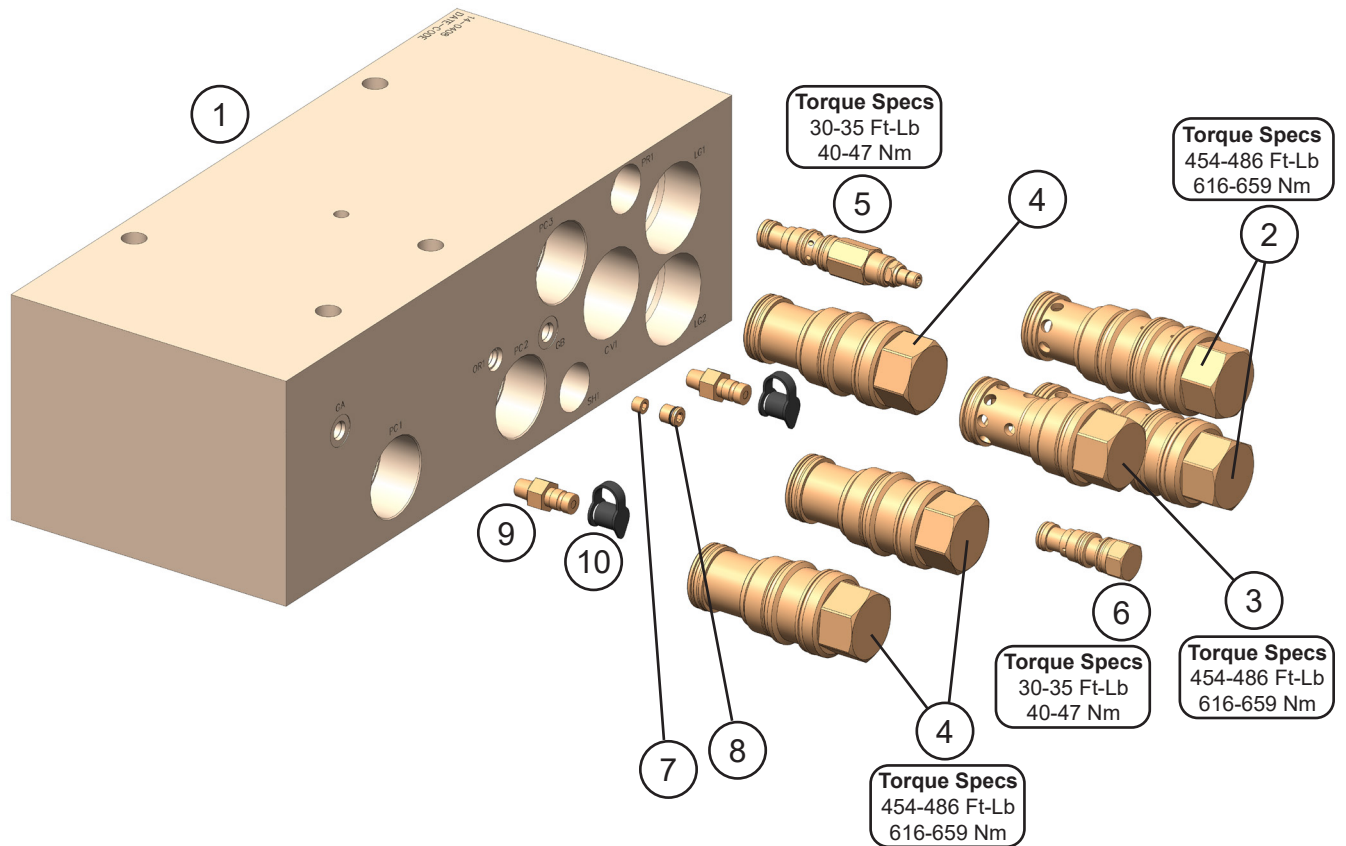
USA

715-395-3488

Europe

+49 83 31 9 25 98 0

REGEN BLOCK SUB-ASSEMBLY - 6360024



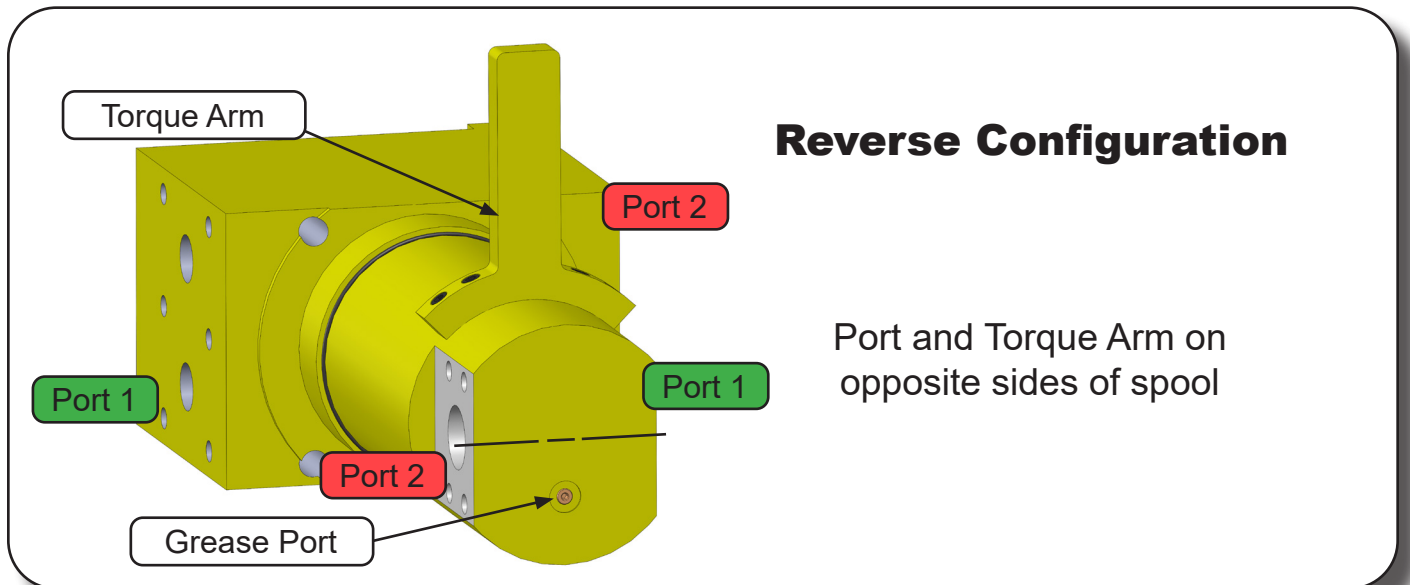
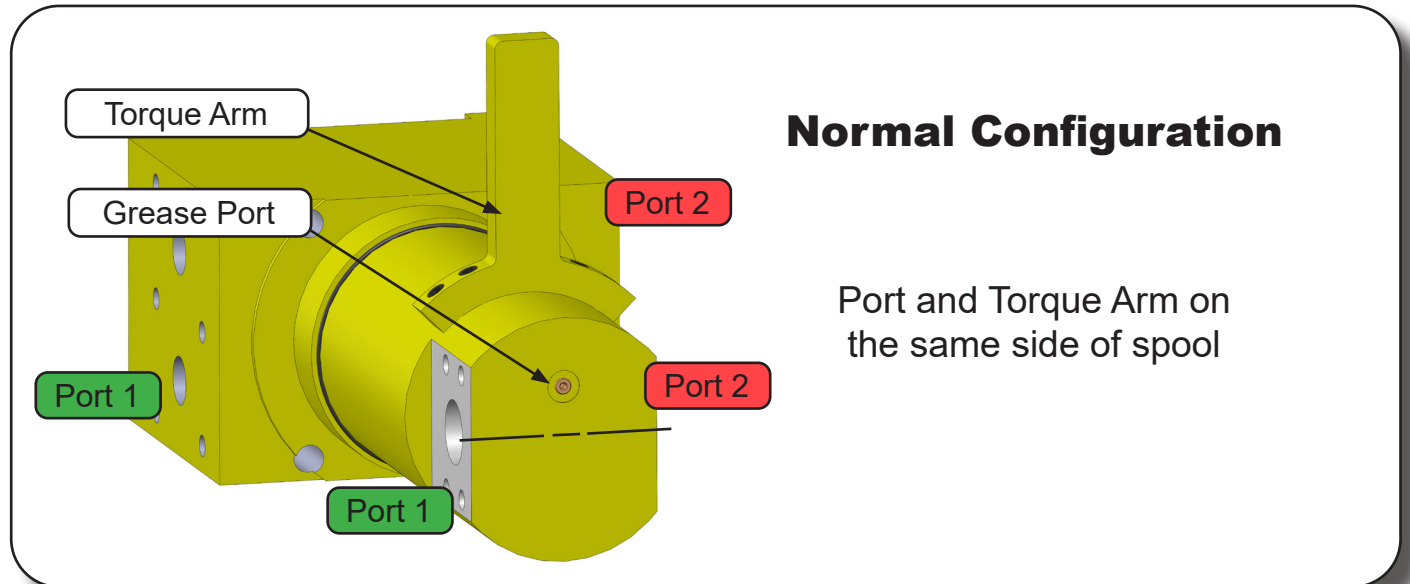
REGEN BLOCK SUB-ASSEMBLY - 6360024

ITEM	QTY	PART NUMBER	DESCRIPTION
1	1	6360024	Valve Regen Seal Kit SK00189
2	2	6300623	Logic Valve Seal Kit 6300624
3	1	6380011	Check Valve Seal Kit SK00023
4	3	6300061	Pilot to Close Check Valve Seal Kit SK00024
5	1	6300625	Pressure Reducing Valve Seal Kit 6300622
6	1	6301200	Shuttle Valve
7	1	6300903	Plug Pipe Orifice 01MP 1/16-27 NPT
8	17	6300075	Plug Socket Head 02MB
9	2	6300088	Diagnostic Nipple
10	2	6310001	Diagnostic Nipple Dust Cap
11	4	6300076	Plug Socket Head 04MB (Not Shown)
12	12	6300078	Plug Socket Head 16MB (Not Shown)

Your GXT 2555 mobile shear will contain one of two regens, Part Number 6360021 or 6360024. If the Mach Plt Frmd Valve Tray is under the regen, the shear contains regen 6360021. If the Mach Plt Frmd Valve Tray is on top of the regen, the shear contains regen 6360024.

ASSEMBLY SWIVEL MANIFOLD CONFIGURATIONS

Visual Quick Reference



BOLT TORQUE SPECIFICATIONS

Reference the product Thread Treatment Diagrams on page 42 to determine whether to use wet or dry torque values for specific bolts.

Reference Procedures on page 43 for threadlocker or anti-seize application and bolt and bolt hole cleaning.

Prior to torquing, clean all bolt holes, bolts and nuts to remove dirt, grease and oil, and identify bolt type.

Never re-torque bolts that use Loctite. If a bolt becomes loose or damaged after the initial use when Loctite was applied and the bolt was torqued, the bolt must be replaced.

Never break tightened bolts loose with a torque wrench. Doing so may break the torque wrench or take it out of calibration.

Torque wrenches should be calibrated on an annual basis.

When using a torque multiplier with a torque wrench, incorrect settings will be multiplied by the ratio of the torque wrench.

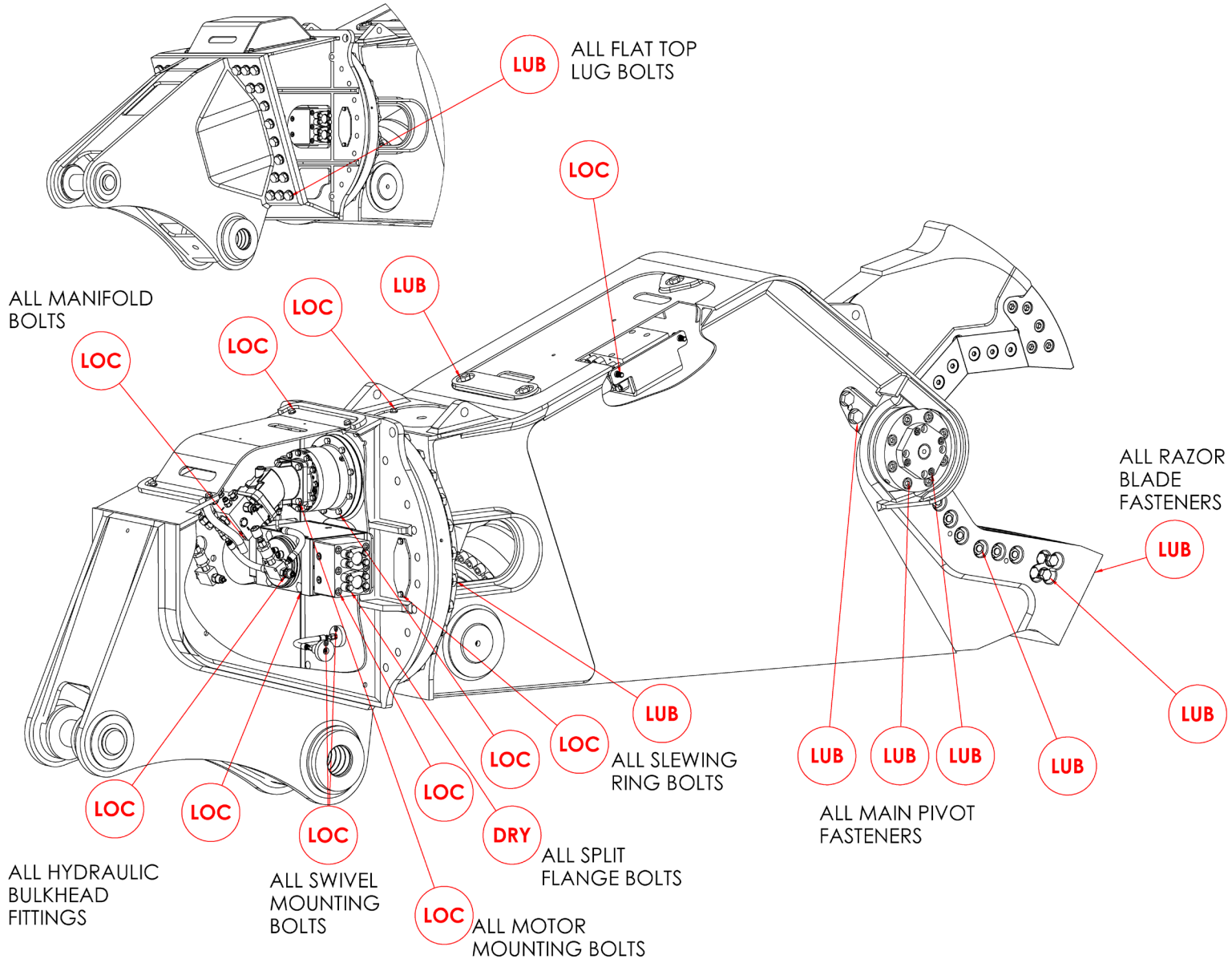
Never use an impact driver on a torque multiplier.

THREAD TREATMENT DIAGRAM

Mobile Shears

Use this diagram to determine what thread treatment, if any, is required for each fastener.

For thread treatment application procedures, see page 43. For prescribed torque values, see page 45.



PROCEDURES

Reference the product Thread Treatment Diagrams on page 42 to determine which of the following procedures is required.

Cleaning

To ensure proper performance of thread treatment and accurate torque values, clean and degrease **all internal and external threads** prior to application of threadlocker, anti-seize or primer and before installation of hardware.

- Ensure both internal and external threads are free of dirt or debris.
- Use brake cleaner or similar cleaning solvent on all threads to remove any grease or oil.
- Allow threads to dry.

NOTICE

Failure to properly clean threads will cause threadlocker, primer, and/or anti-seize to not properly cure!

LOC

Threadlocker

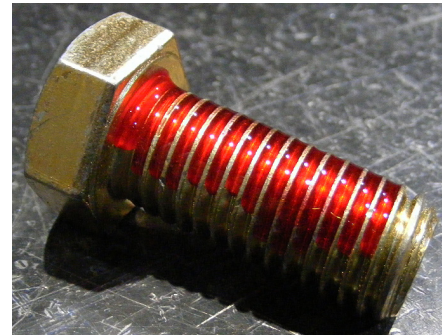
For bolted connections requiring threadlocker, use **Loctite 263** or equivalent applied using the following procedure:

- Clean and degrease all threads.
- For thru holes or nuts, apply threadlocker to bolt threads.
- For blind holes, apply stripe of threadlocker along the length of the hole (applying to the bolt can cause escaping air to remove threadlocker as the bolt is inserted).
- Torque bolt to specified **Wet Torque Value**, see page 45.

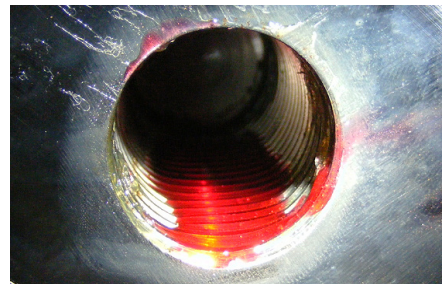
For threaded hydraulic fitting connections, use **Loctite 5452** or equivalent thread sealant in conjunction with **Loctite 7471** primer using the following procedure:

- Clean and degrease all threads.
- Apply Loctite 7471 primer to both external and internal threads and allow to dry.
- Apply threadlocker to 360 degrees of the threads on the male fitting, ensuring adequate coverage.
- Assemble fitting per directions in operator's manual.
- For O-ring boss and flat face O-ring connections, torque fittings to values specified on page 46.

Threadlocker



Blind Hole



Hydraulic Fitting



PROCEDURES

LUB

Anti-Seize

For bolted connections requiring anti-seize lubrication, use **Loctite LB8008** or equivalent using the following procedure:

- Clean and degrease all threads.
- Apply thin coat of anti-seize to internal and external threads and under bolt head and/or nut, ensuring complete coverage.
- Torque bolt to specified **Wet Torque Value**, see page 45.

Anti-Seize

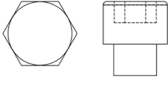
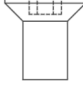


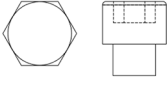
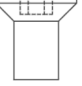
DRY

No Thread Treatment

- Clean and degrease all threads.
- Torque bolt to specified **Dry Torque Value**, see page 45.

BOLT TORQUE SPECIFICATIONS

Dry Torque Values					
		Hex/Socket Head		Flat Head	
					
Fastener Grade	Size x Pitch	Nm	Ft-lb	Nm	Ft-lb
CL 10.9	M8 x 1.25	35	26	27	20
	M10 x 1.50	71	53	58	42
	M12 x 1.75	124	92	101	73
	M14 x 1.50	200	148	163	118
	M14 x 2.00	200	148	163	118
	M16 x 2.00	311	230	254	184
	M20 x 1.50	610	450	498	360
	M20 x 2.50	608	449	497	359
	M24 x 3.00	1054	778	861	622
	M27 x 3.00	1543	1138	1260	910
	M30 x 3.50	2095	1545	1712	1236
	M36 x 4.00	3659	2699	2991	2159
8	1/4-20	14	11	11	8
	5/16-18	32	24	26	19
	3/8-16	59	44	48	35
	7/16-14	94	70	77	56
	1/2-13	143	106	116	84
	1/2-20	162	120	133	96
	5/8-11	287	212	234	169
	3/4-10	509	376	415	300
	7/8-9	821	606	670	484
	1.00-8	1232	909	1007	727
	1.00-14	1383	1020	1130	816
	1.25-7	2463	1817	2013	1453
8/L9	1.50-6	4287	3162	3504	2529

Wet Torque Values					
		Hex/Socket Head		Flat Head	
					
Fastener Grade	Size x Pitch	Nm	Ft-lb	Nm	Ft-lb
CL 10.9	M8 x 1.25	29	22	23	17
	M10 x 1.50	61	45	49	36
	M12 x 1.75	105	78	85	62
	M14 x 1.50	150	111	121	88
	M14 x 2.00	170	126	138	100
	M16 x 2.00	265	196	216	156
	M20 x 1.50	456	337	372	269
	M20 x 2.50	517	382	422	305
	M24 x 3.00	894	660	731	528
	M27 x 3.00	1312	968	1072	774
	M30 x 3.50	1779	1312	1453	1049
	M36 x 4.00	3110	2294	2542	1835
8	1/4-20	13	10	11	8
	5/16-18	27	20	22	16
	3/8-16	50	37	40	29
	7/16-14	80	59	65	47
	1/2-13	122	90	99	72
	1/2-20	138	102	112	81
	5/8-11	244	180	199	144
	3/4-10	433	320	354	256
	7/8-9	698	515	570	412
	1.00-8	1046	772	854	617
	1.00-14	1175	867	960	693
	1.25-7	2095	1545	1712	1236
8/L9	1.50-6	3644	2688	2979	2150

O-RING BOSS & FLAT FACE O-RING TORQUE SPECIFICATIONS

O-Ring Boss Torque Values		
Size Dash	Nm	Ft-lb
-4	22	16
-5	27	20
-6	36	26
-8	83	60
-10	110	80
-12	187	135
-14	249	180
-16	304	220
-20	387	280
-24	498	360

Flat Face O-Ring Torque Values		
Size Dash	Nm	Ft-lb
-4	18	13
-6	30	22
-8	60	44
-10	85	62
-12	121	88
-14	121	88
-16	160	116
-20	213	154
-24	274	198

BOLT DRIVE SPECIFICATIONS

Thread Size x Pitch	Hex Head	Socket Head	Flat Head
			
	Wrench/Drive Size		
M8 x 1.25	13mm	6mm	5mm
M10 x 1.50	17mm	8mm	6mm
M12 x 1.75	19mm	10mm	8mm
M14 x 1.50	22mm	12mm	10mm
M14 x 2.00	22mm	12mm	10mm
M16 x 2.00	24mm	14mm	10mm
M20 x 1.50	30mm	17mm	12mm
M20 x 2.50	30mm	17mm	12mm
M24 x 3.00	36mm	19mm	14mm
M27 x 3.00	41mm	19mm	-
M30 x 3.50	46mm	22mm	-
M36 x 4.00	55mm	27mm	-
1/4-20	7/16"	3/16"	5/32"
5/16-18	1/2"	1/4"	3/16"
3/8-16	9/16"	5/16"	7/32"
7/16-14	5/8"	3/8"	1/4"
1/2-13	3/4"	3/8"	5/16"
1/2-20	3/4"	3/8"	5/16"
5/8-11	15/16"	1/2"	3/8"
3/4-10	1-1/8"	5/8"	1/2"
7/8-9	1-5/16"	3/4"	9/16"
1.00-8	1-1/2"	3/4"	5/8"
1.00-14	1-1/2"	3/4"	5/8"
1.25-7	1-7/8"	7/8"	7/8"
1.50-6	2-1/4"	1"	1"

WARRANTY CLAIM PROCEDURE

Claim Procedure

Notify the Genesis Service Department of the potential warranty claim prior to making the repair. Digital pictures are very helpful for diagnosing problems and recommending repairs.

Contact the Genesis Service Department before making alterations, changes or repairs to any component that is going to be considered for warranty. Not doing so will void all Genesis warranty consideration.

The Genesis Service Department will issue an authorization number to track the repair costs, outgoing parts, and/or defective parts returning to the factory.

Replacement parts must be ordered using a purchase order number. Shipping is standard ground. Overnight shipping is available by request, and Genesis will not cover the shipping charge.

When the repair is complete, submit an invoice to the Genesis Service Department within 30 days. Include itemized internal labor reporting, parts lists and invoices for outside contractors. Reference the authorization number on all invoices.

When returning parts for warranty consideration, include a copy of any related Genesis paperwork along with any other necessary documentation to ensure proper processing and credit. The Genesis Service Department will provide the necessary forms.

Your account will be credited when the warranty claim is accepted.

Blade Warranty

Standard warranty on blades will only be considered on the first edge, and wear on the edge must be 1/8" radius or less. Genesis does not warranty cutting blades that are cracked or broken from top to bottom (perpendicular to the long edge of the blade). Genesis also does not cover fasteners, the labor to replace wear components or collateral damage, such as blade seats, from broken blades, the piercing blade tang or adjustment plates.

Please direct any questions to the Genesis Service Department: 715-395-5252

PARTS ORDER POLICY AND PROCEDURE

Parts Orders Should Include

- Purchase order number
- Model and serial number of attachment
- Part number and quantity needed
- Shipping and billing address
- Method of shipment or required delivery date

Placing Orders

Orders may be placed by phone or e-mail. To e-mail an order, use the form on the following page or your purchase order form. Contact information is located at the front of this manual.

Part Numbers

Part numbers are listed in a separate Parts Manual or, if included, the Parts section of this manual. Contact the Genesis Parts Department with questions regarding part numbers, availability and pricing.

Shipping

All orders will be shipped best way surface unless an alternate shipping method is requested. Shipping charges are not included in the purchase price of parts.

Invoices

All invoices are due upon receipt. Any accounts with invoices open beyond 60 days are subject to review and may be placed on C.O.D. status without further notice.

Returns

Many unused Genesis parts may be returned with proper documentation. Return shipping is the responsibility of the purchaser. Credit will be issued upon return, less a 25% restocking fee. Documentation is required for credit of returned parts. Contact the Genesis Service Department at 715-395-5252 for an RGA (Return Goods Authorization) number and form. An RGA must accompany every return. Items shipped without an RGA may be returned to sender.

Warranty Returns

All parts returned to Genesis for warranty consideration must be returned with a completed RGA (Return Goods Authorization) provided by the Genesis Service Department. The form needs to be completed in its entirety, including any additional information requested by the Service Department. Return shipping is the responsibility of the sender and will be credited upon claim approval. A determination to accept or deny the claim will be made based upon the information available to Genesis. Warranty on purchased parts other than wear components is 6 months. Genesis does not cover labor costs to replace purchased parts replaced under warranty. There is no warranty period on wear parts or components.



PARTS ORDER FORM

Customer: _____ Date: _____

Phone: _____ Contact: _____

Shipping Address: _____ E-mail: _____

Billing Address: _____

Purchase Order: _____ Shipping Method: _____

Model: _____ Serial Number: _____

Quantity	Part Number	Description	Price

E-mail to the Genesis Parts Department: genesisparts@genesisattachments.com
For assistance, call 715-395-5252

INDEX

2" Split Flange Kit	33	6300088 Diagnostic Nipple	39
1102487 Mach Pin Keeper	17	6300406 Adaptor Run Tee 08MFS-08FOX-08MFS	23
1104048 Mach Thrust Washer	7, 9	6300441 Adaptor 12MB-12MO	25
1104049 Shim Set Thrust Washer	7, 9	6300582 Plug 04MP	29
1104075 Mach End Cap	7, 9	6300623 Logic Valve	39
1104081 Mach Tie Rod Nut	7, 9	6300625 Pressure Reducing Valve	39
1104088 Mach Pin Keeper	17	6300731 Adaptor 02MP-04MO	31
1104962 Adaptor 12MB-12MO-90	25	6300746 Adaptor 20MB-12FB	29
1105854 Mach Shoulder Bolt	19	6300748 Manifold	29
1106478 Shim Set, Auto Guide	15	6300749 Flow Control Valve	29
1107152 Mach Valve Tray	33	6300903 Plug Pipe Orifice 01MP 1/16-27 NPT	39
1107158 Wldt Front Cylinder Pin	17	6301112 O-Ring	19
1107165 Mach Bearing Upper Cylinder	17	6301200 Shuttle Valve	39
1107290 Mach Port Block	35	6301211 Filter	29
1107296 Hose	25	6301223 Bearing Slewing	21
1107297 Hose	23	6301253 Cavity Plug	27
1107298 Hose	23	6310001 Diagnostic Nipple Dust Cap	27, 39
1107299 Hose	23	6310059 Adaptor 10MB-08MO	23
1107300 Hose	23	6310184 Adaptor Run Tee 12MFS-12MORB-12MFS	25
1107301 Hose	31	6310185 Adaptor Run Tee 12MFS-12MFS-12MFS BLKHD	23
1107624 Mach Blade Tip Right	13	6310186 Adaptor 12MFS-12MO BLKHD	29
1107625 Mach Blade Tip Left	13	6310188 Adaptor Run Tee 08MFS-10MORB-08MFS	23
1107629 Mach Guide Blade	11	6350111 Assembly Cylinder B20.0 R13.0 S63.0	33
1107630 Mach Blade Razor	11	6360024 Valve Regen	33, 39
1107632 Wtmg Upper	5	6360027 Gearbox	21
1107657 Mach Bearing	7	6360045 Piston Motor	21
1107658 Mach Bearing	9	6360100 Counterbalance Valve Assembly	25
1107660 Shim Set Guide Blade	11	6360101 Relief Valve	27
1107698 Mach Pin Rear	17	6360144 Motor Manifold	27
1107699 Wtmg Stick	5	6380002 Check Valve	27
1107700 Mach Tie Rod	7	6380011 Check Valve	39
1107701 Hose	33	Assembly Access Covers	5, 18, 19
1107702 Hose	33	Assembly Auto Guide	5, 14, 15
1107703 Hose	33	Assembly Cylinder Pins	5, 16, 17
1107704 Wldt Cover	19	Assembly Line Mount Manifold	5, 28, 29
1107742 Mach Adj Plate Guide Blade	11	Assembly Lower Blades	5, 10, 11
1107744 Mach Adj Plate Guide Blade	11	Assembly Open and Close Circuit	5, 32, 33
1107838 Plt Rear Cover	19	Assembly Pivot Group - Left Side	5, 8, 9
1107858 Shim Set Blade	11	Assembly Pivot Group - Right Side	5, 6, 7
1107860 Mach Adj Plate Primary	11	Assembly Port Block	5, 34, 35
1107862 Mach Adj Plate Secondary	11	Assembly Rotation - Grease System Plumbing	5, 30, 31
1107967 Mach Blade	11, 13	Assembly Rotation - Motor and Valve Drain Lines	5, 22, 23
1108954 Mach Mounting Plate	25	Assembly Rotation - Motor Manifold	5, 26, 27
1108958 Hose	25	Assembly Rotation - Piston Motor	5, 20, 21
1108959 Hose	25	Assembly Rotation - Valve to Valve Plumbing	5, 24, 25
5512411 Mach Grease Bulkhead Adaptor	31	Assembly Swivel Manifold	5, 33, 36, 37
5512419 Mach Slewing Ring Grease Adaptor	31	Assembly Swivel Manifold Configurations	40
6200002 Grease Fitting	7, 9, 15, 17, 31	Assembly Upper Blades	5, 12, 13
6300014 Diagnostic Nipple 06MB	27	Bolt Drive Specifications	47
6300017 Adaptor 08MB-08MO	23	Bolt Torque Specifications	41, 45
6300061 Pilot to Close Check Valve	39	Contact Information	2, 53
6300075 Plug Socket Head 02MB	39	F0110070 Hex Head Capscrew M10 x 1.5	25
6300076 Plug Socket Head 04MB	39	F0112030 Hex Head Capscrew M12 x 1.75 x 30	19
6300076 Plug Zero-Leak 04	35		
6300078 Plug Socket Head 16MB	39		

INDEX

- F0116040 Hex Head Capscrew M16-2.0 x 40 33
- F0116060 Hex Head Capscrew M16 x 2.00 x 60 35
- F0120060 Hex Head Capscrew M20 x 2.5 x 60 21
- F0120070 Hex Head Capscrew M20-2.5 x 70 33
- F0120320 Hex Head Capscrew M20 x 2.5 x 320 37
- F0210300 Hex Head Capscrew 1-8 x 3 11
- F0210700 Hex Head Capscrew 1 - 8 x 7 15
- F0213575 Hex Head Capscrew 1¼ - 7 x 5¾ 11
- F0213700 Hex Head Capscrew 1¼ - 7 x 7 11
- F0215800 Hex Head Capscrew 1½ - 6 x 8 21
- F0250150 Hex Head Capscrew ½ - 13 x 1½ 21
- F0412035 Flat Head Capscrew M12 x 1.75 x 35 7, 9
- F0513700 Flat Head Capscrew 1¼ - 7 x 7 11
- F0513800 Flat Head Capscrew 1¼ - 7 x 8 13
- F0610025 Socket Head Capscrew M10 x 1.50 x 25 31
- F0610035 Socket Head Capscrew M10 x 1.50 x 35 31
- F0612050 Socket Head Capscrew M12 x 1.75 x 45 7, 9
- F0616035 Socket Head Capscrew M16-2.0 x 35 33
- F0616050 Socket Head Capscrew M16 x 2.00 x 50 7, 9
- F0616170 Socket Head Capscrew M16 x 2.00 x 170 35
- F0620130 Socket Head Capscrew M20 x 2.50 x 130 17
- F0624080 Socket Head Capscrew M24 7, 9
- F0624280 Socket Head Capscrew M24 x 3.00 x 280 17
- F0712700 Socket Head Capscrew 1¼ - 7 x 7 13
- F0744400 Socket Head Capscrew 7/16 - 14 x 4 27
- F0824300 Hex Nut M24 x 3.00 17
- F0912507 Hex Nut 1¼ - 7 11, 13
- F1020250 Nylock Nut M20 x 2.50 17
- F1201224 Flat Washer M12 7, 9, 19
- F1201630 Flat Washer M16 7, 9, 33
- F1202444 Flat Washer M24 7, 9
- F1300100 Flat Washer 1" 11
- F1300100 Flat Washer Narrow 1" 15
- F1300125 Flat Washer 1¼" 11
- F1300125 Flat Washer Narrow 1¼ 13
- F1401628 Lock Washer M16 35
- F1402000 Lock Washer M20 33
- F1900040 Washer 10mm Steel 25
- F1900050 Washer Nord-Lock ½ and M20 Steel 21
- F1900063 Washer Nord-Lock ⅝ and M16 Steel 33
- F1900075 Washer Nord-Lock ¾ and M20 Steel 21
- F1900075 Wedge Lock Washer ¾ 37
- F2510100 Set Screw Socket Head 1-8 x 1 11
- F2803900 Hytorc Washer M39 21
- F3616040 Socket Head Shoulder Screw M16-2.0 x 40 33
- General Arrangement 4, 5
- H0262150 Split Flange Half 1.50 Code 62 35
- H0362150 Split Flange Plug 35
- H0662200 Split Flange Half 2.00 Code 62 33
- Line Mount Manifold 25
- Mach Main Shaft 9
- Motor Manifold 23, 25
- O-Ring Boss & Flat Face O-Ring Torque Specifications 46
- Parts Order Form 50
- Parts Order Policy and Procedure 49
- Piston Motor 23
- Procedures 43, 44
- Regen Block Sub-Assembly - 6360024 5, 38, 39
- S0190219 O-Ring 21
- S0190225 O-Ring 35
- S0190228 O-Ring 33
- S0190250 O-Ring 21
- S0190357 O-Ring 7, 9
- Seal Kit 6300622 39
- Seal Kit 6300624 39
- Seal Kit SK00023 39
- Seal Kit SK00024 39
- Seal Kit SK00189 39
- Table of Contents 3
- Thread Treatment Diagram 42
- Torque Arm Kit 37
- Warranty Claim Procedure 48
- Wtmg Lug Upper Head 5



GENESIS®

The Promise of Performance.

CONTACT INFORMATION

Genesis Attachments

1000 Genesis Drive
Superior, WI 54880 USA

Toll Free: 888-SHEAR-IT
(888-743-2748)

Phone: 715.395.5252

E-mail:
info@genesisattachments.com

Europe/Africa/Middle East Genesis GmbH

Teramostrasse 23
87700 Memmingen, Germany

Phone: +49 83 31 9 25 98 0

Fax: +49 83 31 9 25 98 80

genesis-europe.com

E-mail:
info@genesis-europe.com

Asia Pacific Representative Office

24 Upper Serangoon View #12-28
Singapore 534205

Phone: +65 9673 9730

E-mail:
tchoo@genesisattachments.com

Central America & Colombia

Cra 13A #89-38 / Ofi 613
Bogota, Colombia

Phone: +57 1 610 8160 / 795 8747

E-mail:
contact@themsagroup.com

View and download all manuals: genesisattachments.com/manuals
Patents: genesisattachments.com/products/patents

Rev. O - 10-16-24