

**GENESIS®**

The Promise of Performance.

## GXT 665R Mobile Shear

### PARTS MANUAL



## CONTACT INFORMATION

### Genesis Attachments

1000 Genesis Drive  
Superior, WI 54880 USA

Toll Free: 888-SHEAR-IT  
(888-743-2748)

Phone: 715.395.5252

E-mail:  
info@genesisattachments.com

### Europe/Africa/Middle East Genesis GmbH

Teramostrasse 23  
87700 Memmingen, Germany

Phone: +49 83 31 9 25 98 0  
Fax: +49 83 31 9 25 98 80  
genesis-europe.com

E-mail:  
info@genesis-europe.com

### Asia Pacific Representative Office

24 Upper Serangoon View #12-28  
Singapore 534205

Phone: +65 9673 9730

E-mail:  
tchoo@genesisattachments.com

### Central America & Colombia

Cra 13A #89-38 / Ofi 613  
Bogota, Colombia

Phone: +57 1 610 8160 / 795 8747

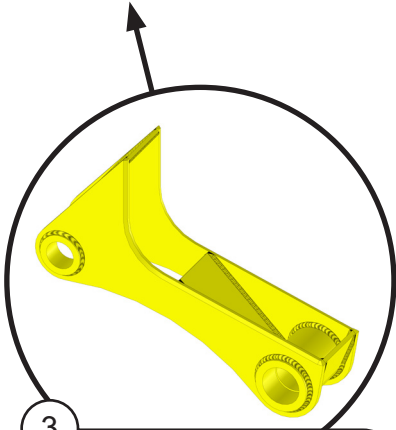
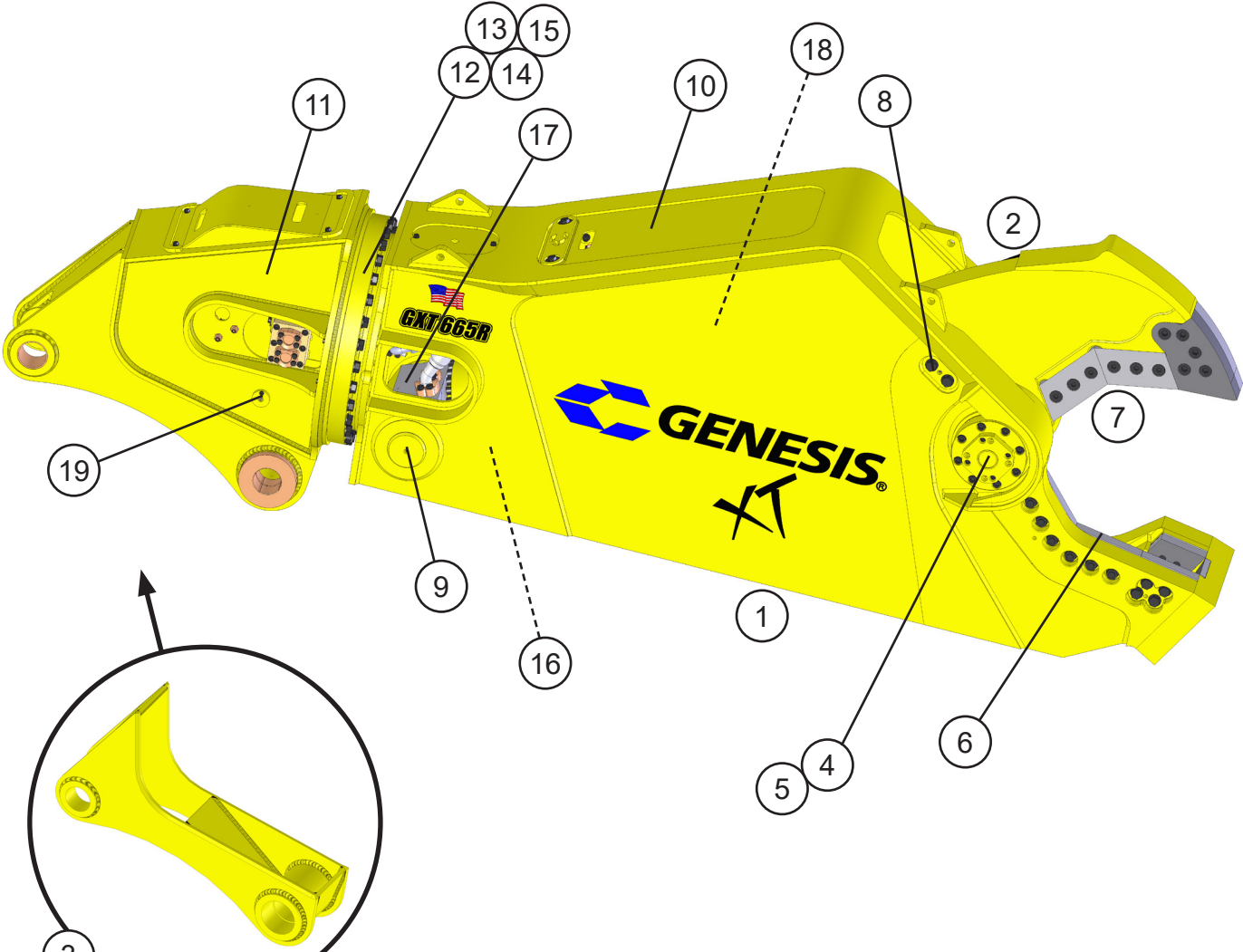
E-mail:  
contact@themsagroup.com

View and download all manuals: [genesisattachments.com/manuals](http://genesisattachments.com/manuals)  
Patents: [genesisattachments.com/products/patents](http://genesisattachments.com/products/patents)

# TABLE OF CONTENTS

|   |           |
|---|-----------|
| <b>CONTACT INFORMATION</b> .....                                      | <b>2</b>  |
| <b>GENERAL ARRANGEMENT</b> .....                                      | <b>4</b>  |
| <b>ASSEMBLY PIVOT GROUP - RIGHT SIDE</b> .....                        | <b>6</b>  |
| <b>ASSEMBLY PIVOT GROUP - LEFT SIDE</b> .....                         | <b>8</b>  |
| <b>ASSEMBLY LOWER BLADES</b> .....                                    | <b>10</b> |
| <b>ASSEMBLY UPPER BLADES</b> .....                                    | <b>12</b> |
| <b>ASSEMBLY AUTO GUIDE</b> .....                                      | <b>14</b> |
| <b>ASSEMBLY CYLINDER PINS</b> .....                                   | <b>16</b> |
| <b>ASSEMBLY ACCESS COVERS</b> .....                                   | <b>18</b> |
| <b>ASSEMBLY UPPER HEAD</b> .....                                      | <b>20</b> |
| <b>ASSEMBLY ROTATION</b> .....  | <b>22</b> |
| <b>ASSEMBLY ROTATION CIRCUIT</b> .....                                | <b>24</b> |
| <b>ROTATE CROSS-OVER / C'BAL SUB-ASSEMBLY</b> .....                   | <b>26</b> |
| <b>SUB-ASSEMBLY LINE MOUNT MANIFOLD</b> .....                         | <b>28</b> |
| <b>ASSEMBLY OPEN AND CLOSE CIRCUIT</b> .....                          | <b>30</b> |
| <b>ASSEMBLY SWIVEL MANIFOLD</b> .....                                 | <b>32</b> |
| <b>REGEN BLOCK SUB-ASSEMBLY - 6360021</b> .....                       | <b>34</b> |
| <b>ASSEMBLY SLEWING RING LUBRICATION</b> .....                        | <b>36</b> |
| <b>BOLT TORQUE SPECIFICATIONS</b> .....                               | <b>38</b> |
| <b>THREAD TREATMENT DIAGRAM</b> .....                                 | <b>39</b> |
| Mobile Shears.....  | 39        |
| <b>PROCEDURES</b> .....   | <b>40</b> |
| Cleaning.....   | 40        |
| Threadlocker.....   | 40        |
| Anti-Seize.....   | 41        |
| No Thread Treatment.....  | 41        |
| <b>BOLT TORQUE SPECIFICATIONS</b> .....                               | <b>42</b> |
| Dry Torque Values.....  | 42        |
| Wet Torque Values.....  | 42        |
| <b>O-RING BOSS &amp; FLAT FACE O-RING TORQUE SPECIFICATIONS</b> ..... | <b>43</b> |
| <b>BOLT DRIVE SPECIFICATIONS</b> .....                                | <b>44</b> |
| <b>WARRANTY</b> .....   | <b>45</b> |
| Claim Procedure.....  | 45        |
| Blade Warranty.....   | 45        |
| <b>PARTS ORDER POLICY AND PROCEDURE</b> .....                         | <b>46</b> |
| Parts Orders Should Include.....                                      | 46        |
| Placing Orders.....   | 46        |
| Part Numbers.....   | 46        |
| Shipping.....   | 46        |
| Invoices.....   | 46        |
| Returns.....  | 46        |
| Warranty Returns.....   | 46        |
| <b>PARTS ORDER FORM</b> .....   | <b>47</b> |
| <b>INDEX</b> .....  | <b>48</b> |
| <b>CONTACT INFORMATION</b> .....                                      | <b>50</b> |

# GENERAL ARRANGEMENT



**3** Wtmg Lug Upper Head  
 Part Number is Serial Number specific.  
 For replacement parts call the Genesis  
 Parts Department.  
**USA**                      **Europe**  
 715-395-5614    +49 83 31 9 25 98 0  
 715-395-3405



**Serial Number Location**  
 Facing the left side of shear,  
 lower right corner.



## GENERAL ARRANGEMENT

| ITEM | QTY | PART NUMBER | DESCRIPTION                            |
|------|-----|-------------|--|
| 1    | 1   | *           | Wtmg Stick                             |
| 2    | 1   | *           | Wtmg Upper                             |
| 3    |     | *           | Wtmg Lug Upper Head                    |
| 4    |     | See page 6  | Assembly Pivot Group - Right Side      |
| 5    |     | See page 8  | Assembly Pivot Group - Left Side       |
| 6    |     | See page 10 | Assembly Lower Blades                  |
| 7    |     | See page 12 | Assembly Upper Blades                  |
| 8    |     | See page 14 | Assembly Auto Guide                    |
| 9    |     | See page 16 | Assembly Cylinder Pins                 |
| 10   |     | See page 18 | Assembly Access Covers                 |
| 11   |     | See page 20 | Assembly Upper Head                    |
| 12   |     | See page 22 | Assembly Rotation                      |
| 13   |     | See page 24 | Assembly Rotation Circuit              |
| 14   |     | See page 26 | Sub-Assembly Rotate Cross-over / C'bal |
| 15   |     | See page 28 | Sub-Assembly Line Mount Manifold       |
| 16   |     | See page 30 | Assembly Open and Close Circuit        |
| 17   |     | See page 32 | Assembly Swivel Manifold               |
| 18   |     | See page 34 | Regen Block Sub-Assembly - 6360021     |
| 19   |     | See page 36 | Assembly Slewing Ring Lubrication      |

\* Part numbers are Serial Number specific. For replacement parts call the Genesis Parts Department.

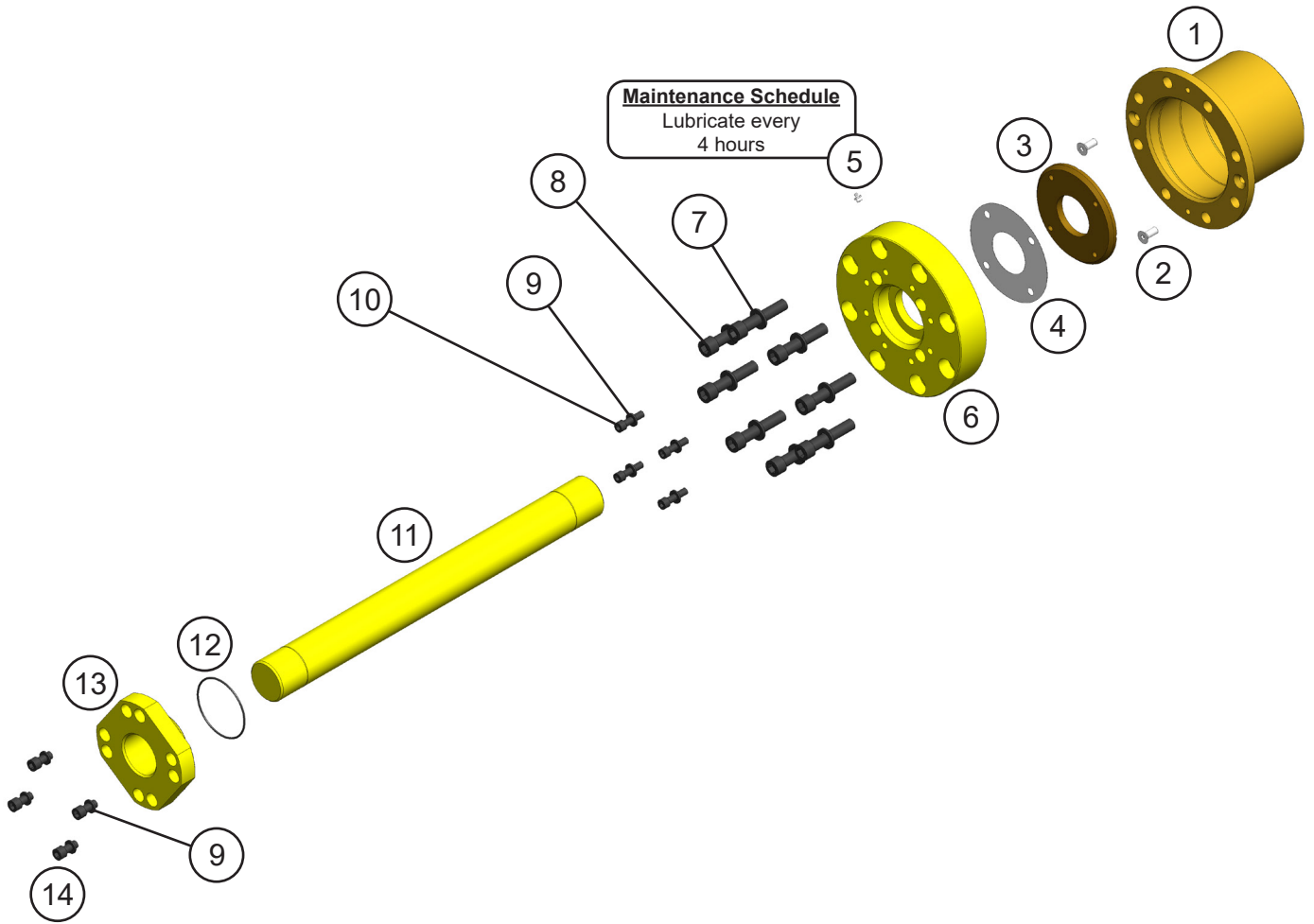
**USA**

715-395-3488

**Europe**

+49 83 31 9 25 98 0

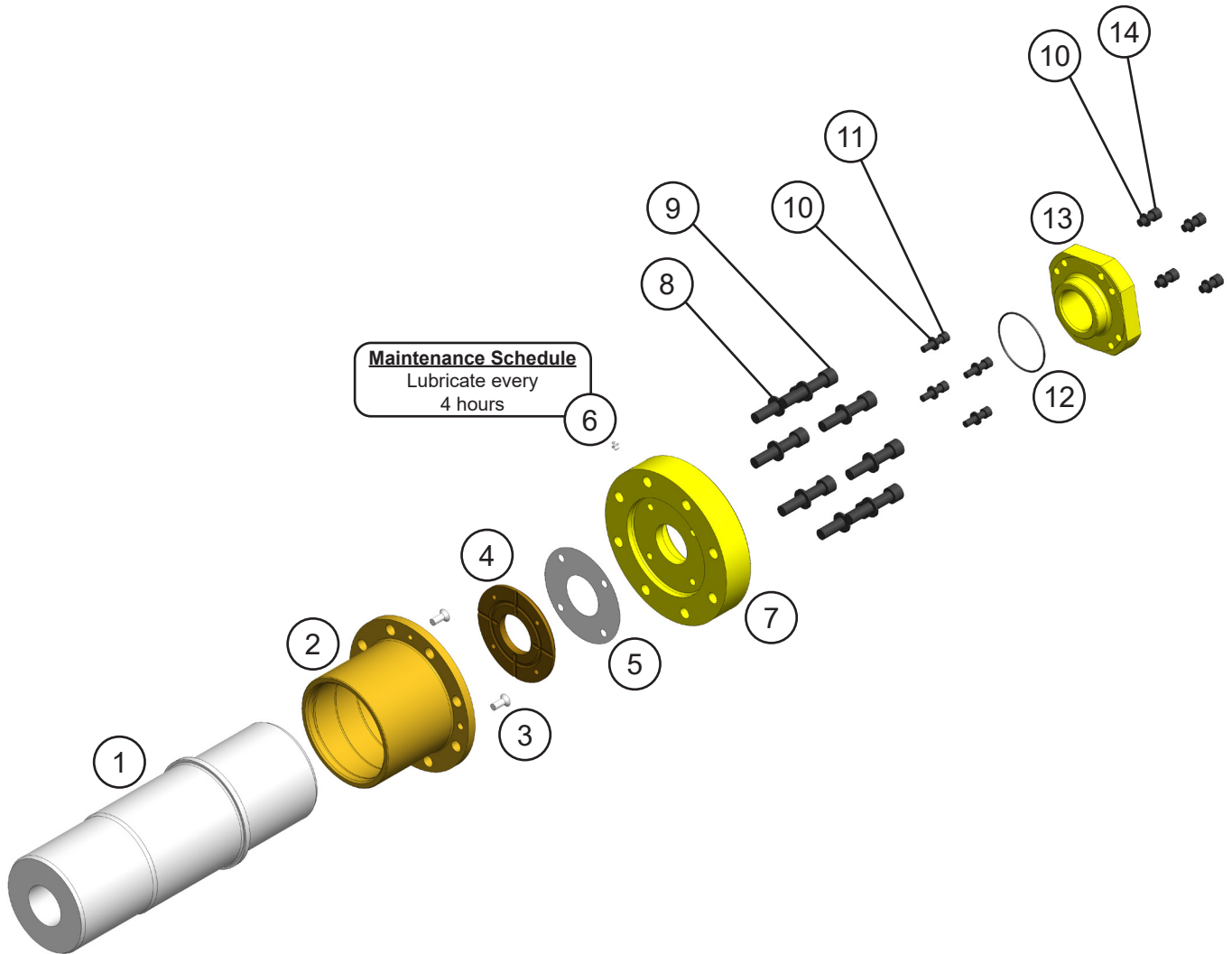
# ASSEMBLY PIVOT GROUP - RIGHT SIDE



## ASSEMBLY PIVOT GROUP - RIGHT SIDE

| ITEM | QTY | PART NUMBER | DESCRIPTION                           |
|------|-----|-------------|---------------------------------------|
| 1    | 1   | 1103125     | Mach Bearing                          |
| 2    | 2   | F0412030    | Flat Head Capscrew M12 x 1.75 x 30    |
| 3    | 1   | 1102442     | Mach Thrust Washer                    |
| 4    | 1   | 1102448     | Shim Set Thrust Washer                |
| 5    | 1   | 6200002     | Grease Fitting                        |
| 6    | 1   | 1102444     | Mach End Cap                          |
| 7    | 8   | F1202037    | Flat Washer M20                       |
| 8    | 8   | F0620100    | Socket Head Capscrew M20 x 2.50 x 100 |
| 9    | 8   | F1201224    | Flat Washer M12                       |
| 10   | 4   | F0612045    | Socket Head Capscrew M12 x 1.75 x 45  |
| 11   | 1   | 1105856     | Mach Tie Rod                          |
| 12   | 1   | S0190244    | O-Ring                                |
| 13   | 1   | 1102446     | Mach Tie Rod Nut                      |
| 14   | 4   | F0612040    | Socket Head Capscrew M12 x 1.75 x 40  |

# ASSEMBLY PIVOT GROUP - LEFT SIDE



## ASSEMBLY PIVOT GROUP - LEFT SIDE

| ITEM | QTY | PART NUMBER | DESCRIPTION                           |
|------|-----|-------------|---------------------------------------|
| 1    | 1   | *           | Mach Main Shaft                       |
| 2    | 1   | 1103125     | Mach Bearing                          |
| 3    | 2   | F0412030    | Flat Head Capscrew M12 x 1.75 x 30    |
| 4    | 1   | 1102442     | Mach Thrust Washer                    |
| 5    | 1   | 1102448     | Shim Set Thrust Washer                |
| 6    | 1   | 6200002     | Grease Fitting                        |
| 7    | 1   | 1102444     | Mach End Cap                          |
| 8    | 8   | F1202037    | Flat Washer M20                       |
| 9    | 8   | F0620100    | Socket Head Capscrew M20 x 2.50 x 100 |
| 10   | 8   | F1201224    | Flat Washer M12                       |
| 11   | 4   | F0612045    | Socket Head Capscrew M12 x 1.75 x 45  |
| 12   | 1   | S0190244    | O-Ring                                |
| 13   | 1   | 1102446     | Mach Tie Rod Nut                      |
| 14   | 4   | F0612040    | Socket Head Capscrew M12 x 1.75 x 40  |

\* Part number is Serial Number specific. For replacement parts call the Genesis Parts Department.

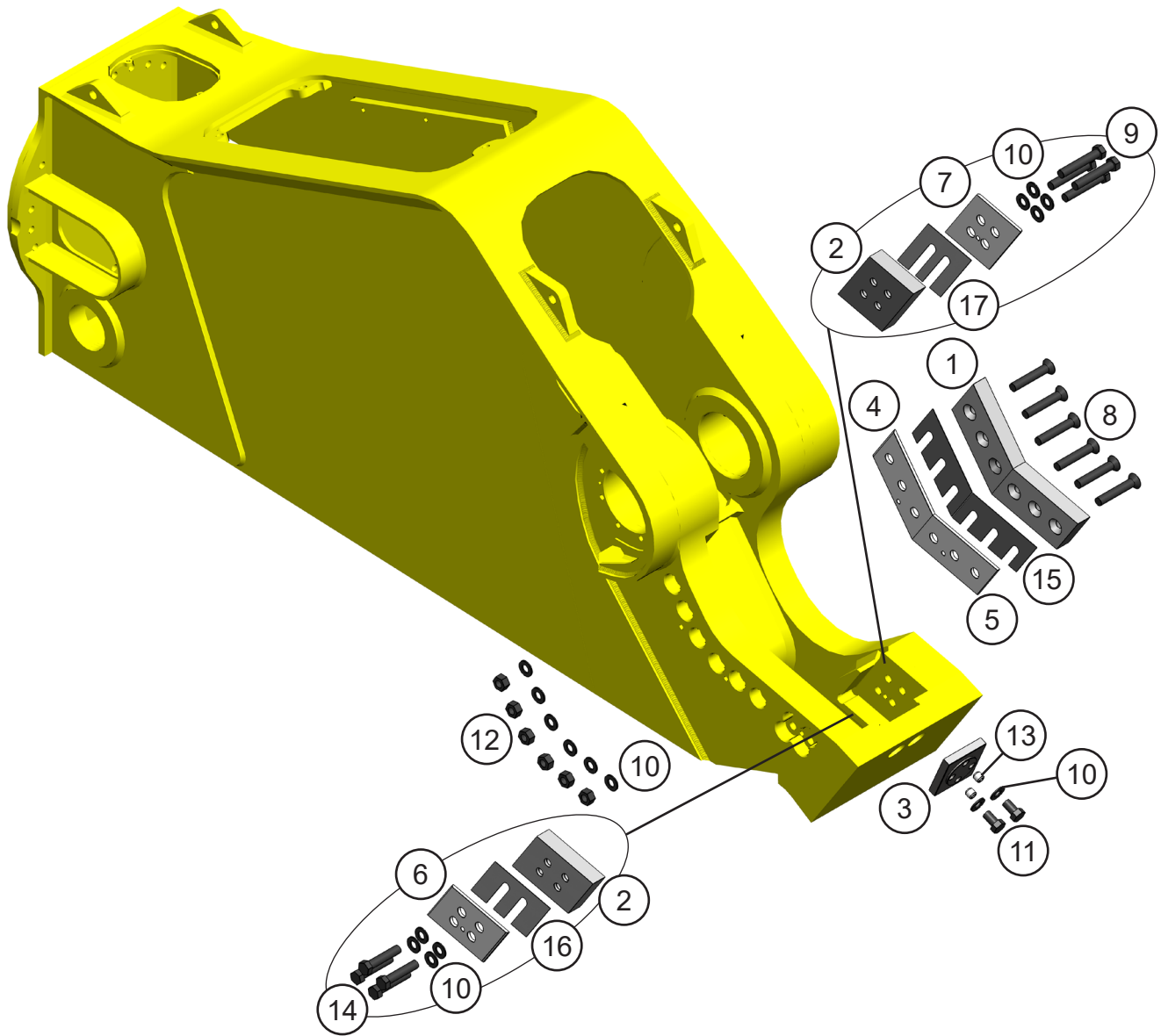
**USA**

715-395-3488

**Europe**

+49 83 31 9 25 98 0

# ASSEMBLY LOWER BLADES

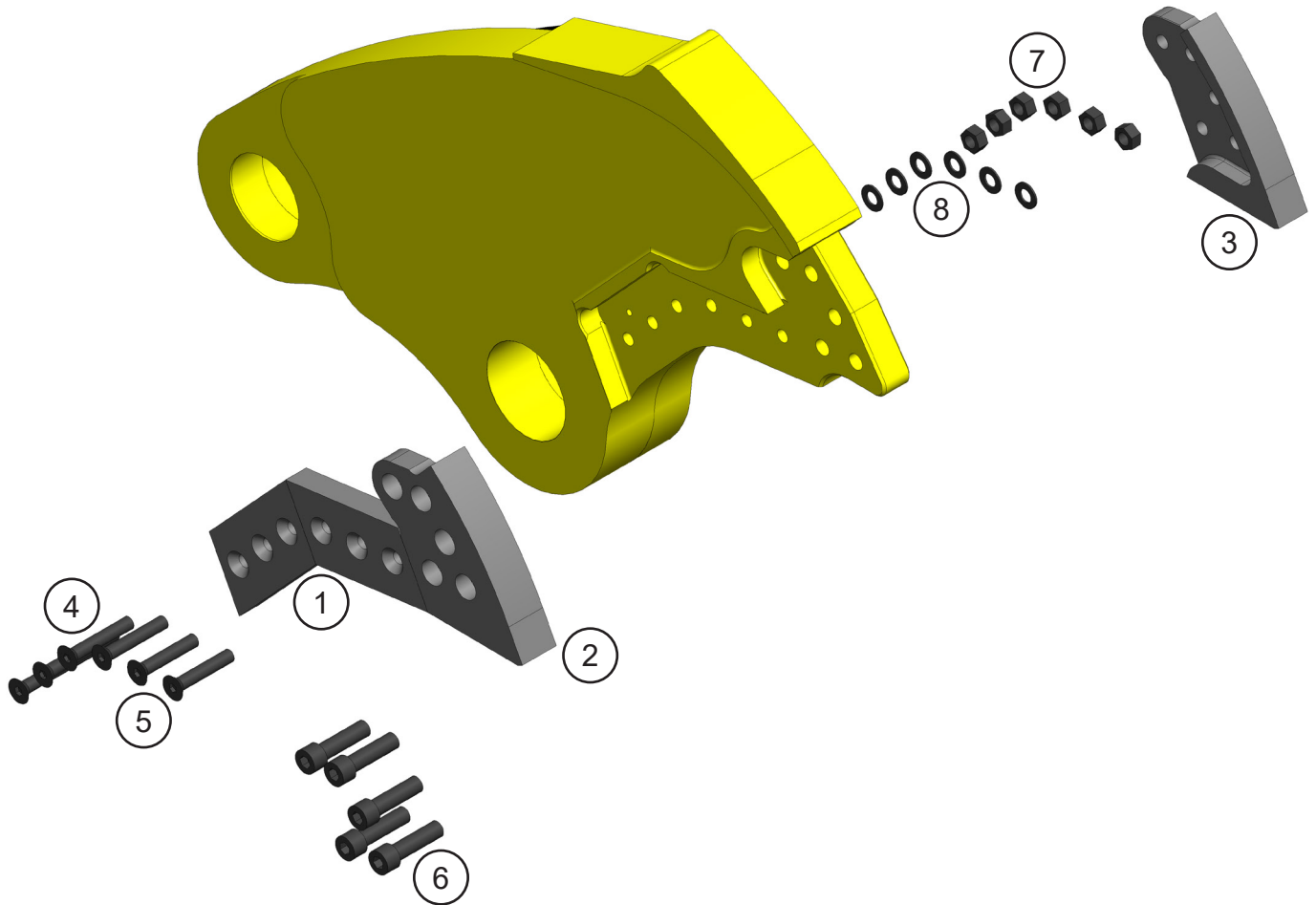


## ASSEMBLY LOWER BLADES

| ITEM | QTY | PART NUMBER | DESCRIPTION                               |
|------|-----|-------------|---|
| 1    | 2   | 1105721     | Mach Blade                                |
| 2    | 2   | 1105722     | Mach Blade Guide                          |
| 3    | 1   | 1101957     | Mach Blade Razor                          |
| 4    | 1   | 1105863     | Mach Adjustment Plate Primary             |
| 5    | 1   | 1105821     | Mach Adjustment Plate Secondary           |
| 6    | 1   | 1105865     | Mach Guide Blade Adjustment Plate         |
| 7    | 1   | 1105867     | Mach Guide Blade Adjustment Plate         |
| 8    | 6   | F0510600    | Flat Head Capscrew 1 - 8 x 6              |
| 9    | 4   | F0210600    | Hex Head Capscrew 1 - 8 x 6               |
| 10   | 16  | F1300100    | Flat Washer Narrow 1"                     |
| 11   | 2   | F0210175    | Hex Head Capscrew 1 - 8 x 1 $\frac{3}{4}$ |
| 12   | 6   | F0910008    | Hex Nut 1 - 8                             |
| 13   | 2   | F2510100    | Set Screw Socket Head 1 - 8 x 1           |
| 14   | 4   | F0210500    | Hex Head Capscrew 1 - 8 x 5               |
| 15   |     | 1105723     | Blade Shim Set                            |
| 16   |     | 1105724     | Guide Blade Shim Set                      |
| 17   |     | 1105725     | Guide Blade Shim Set                      |



# ASSEMBLY UPPER BLADES

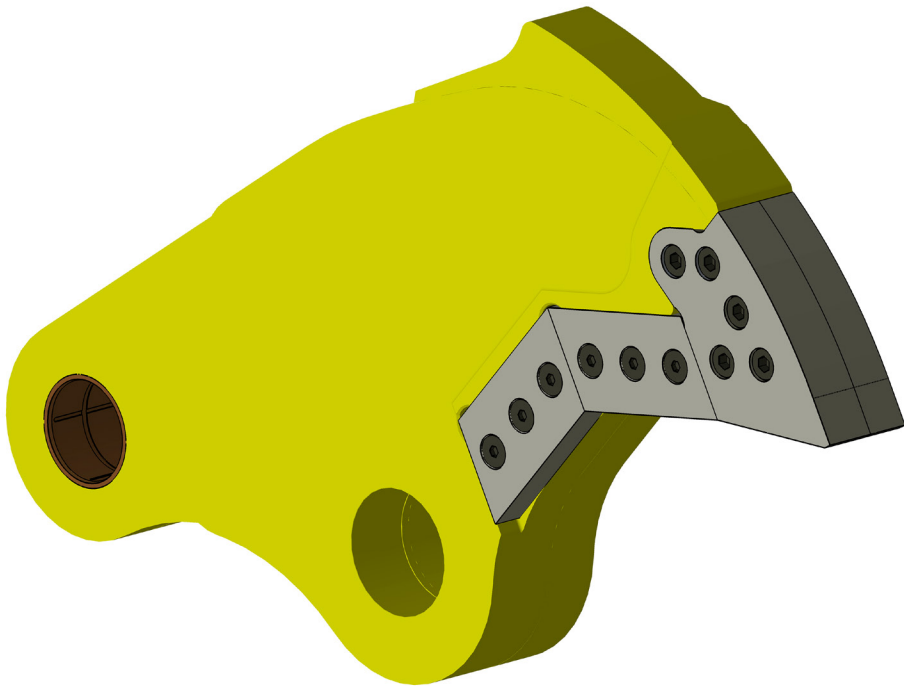
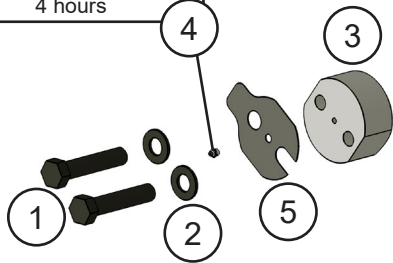


## ASSEMBLY UPPER BLADES

| ITEM | QTY | PART NUMBER | DESCRIPTION                                       |
|------|-----|-------------|---|
| 1    | 2   | 1105721     | Mach Blade  |
| 2    | 1   | 1105840     | Mach Blade Tip RH                                 |
| 3    | 1   | 1105841     | Mach Blade Tip LH                                 |
| 4    | 4   | F0510700    | Flat Head Capscrew 1 - 8 x 7                      |
| 5    | 2   | F0510550    | Flat Head Capscrew 1 - 8 x 5½                     |
| 6    | 5   | 1102857     | Mach Bolt Socket Head Capscrew 1¼ - 7 x 4½ Custom |
| 7    | 6   | F0910008    | Hex Nut 1 - 8                                     |
| 8    | 6   | F1300100    | Flat Washer Narrow 1"                             |

# ASSEMBLY AUTO GUIDE

**Maintenance Schedule**  
Lubricate every  
4 hours



## ASSEMBLY AUTO GUIDE

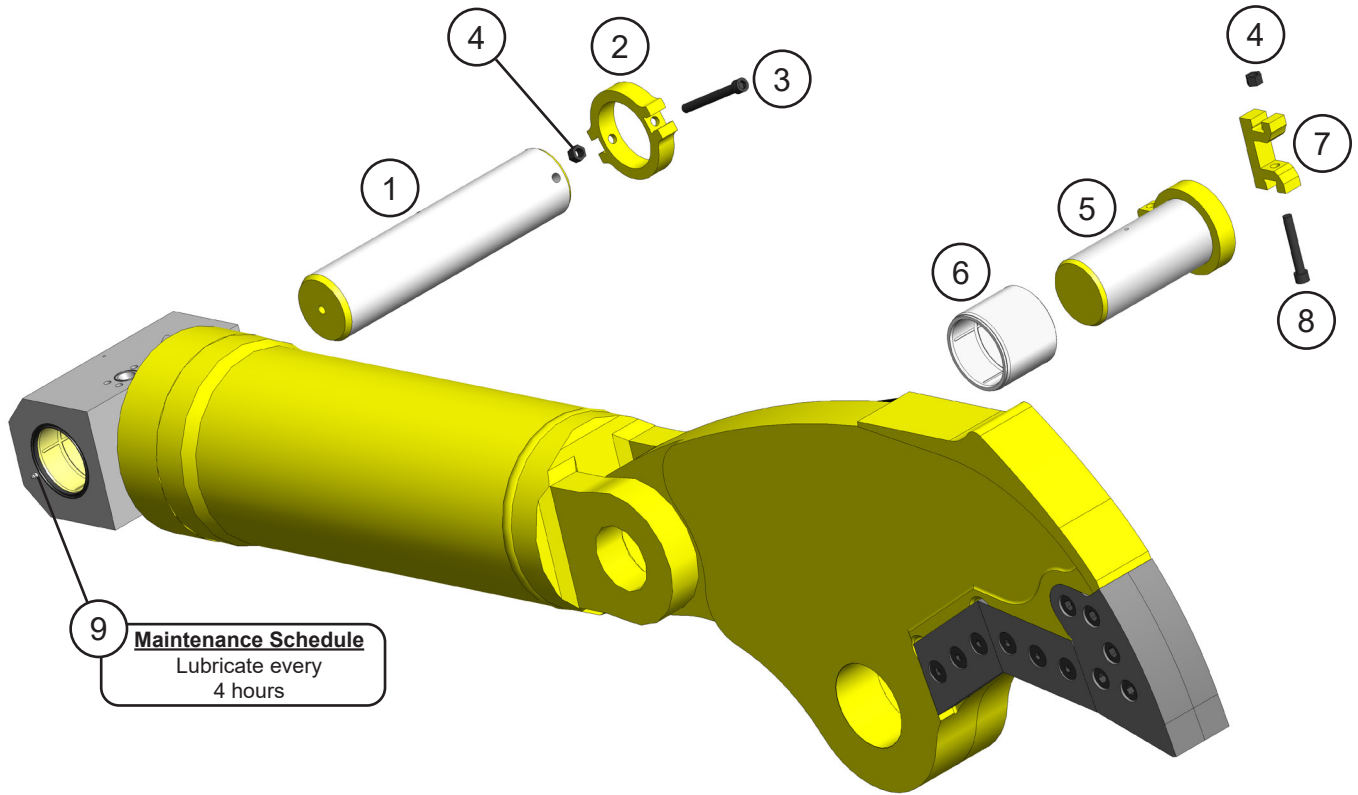
| ITEM | QTY | PART NUMBER | DESCRIPTION                 |
|------|-----|-------------|-----------------------------|
| 1    | 2   | F0210500    | Hex Head Capscrew 1 - 8 x 5 |
| 2    | 2   | F1300100    | Flat Washer Narrow 1"       |
| 3    | 1   | *           | Mach Auto Guide             |
| 4    | 1   | 6200002     | Grease Fitting              |
| 5    |     | 1106478     | Shim Set, Auto Guide        |

\* Part number is Serial Number specific. For replacement parts call the Genesis Parts Department.

**USA**  
715-395-3488

**Europe**  
+49 83 31 9 25 98 0

# ASSEMBLY CYLINDER PINS

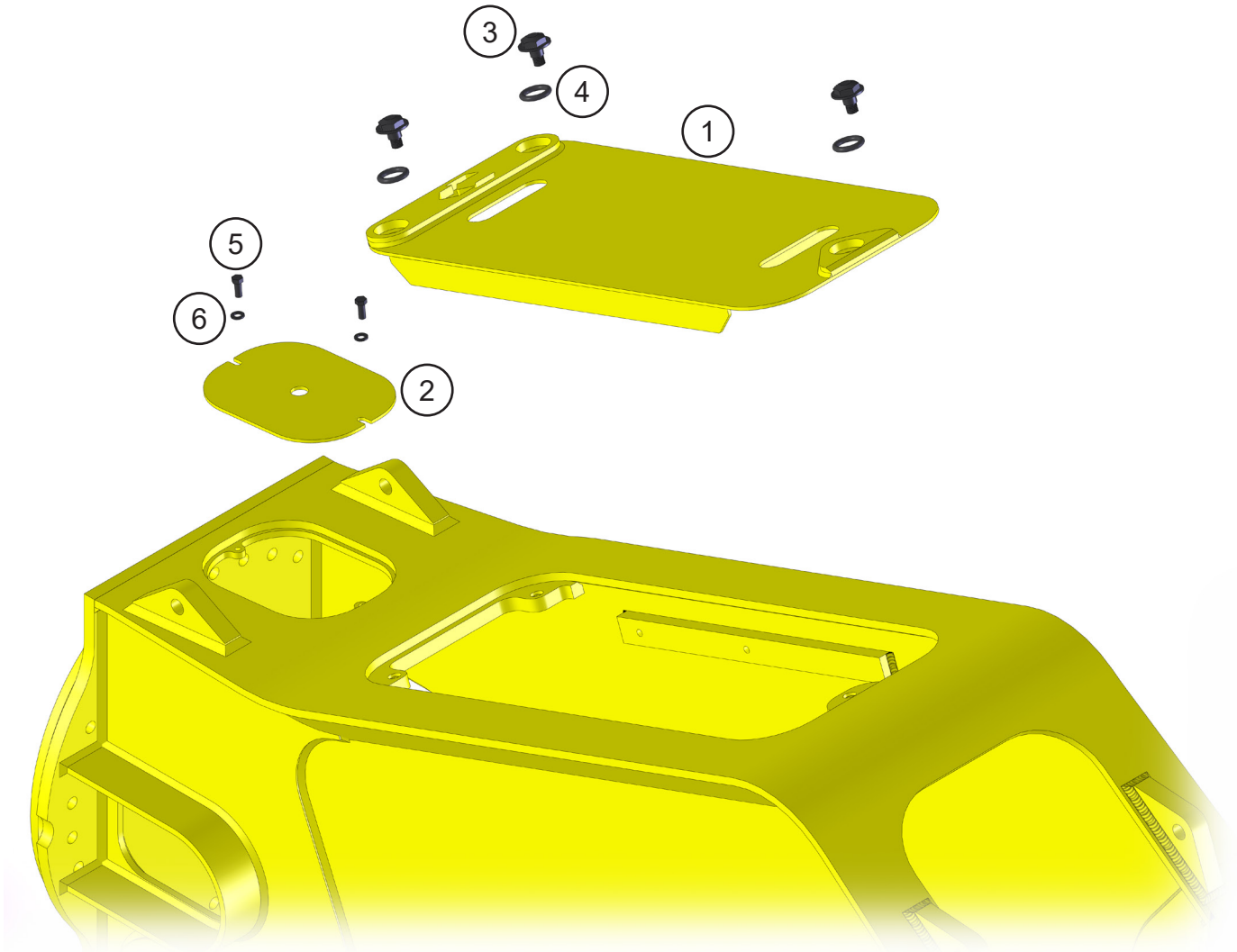


9 **Maintenance Schedule**  
Lubricate every  
4 hours

## ASSEMBLY CYLINDER PINS

| ITEM | QTY | PART NUMBER | DESCRIPTION                            |
|------|-----|-------------|--|
| 1    | 1   | 1105943     | Mach Pin Rear                          |
| 2    | 1   | 1103172     | Mach Pin Keeper Rear                   |
| 3    | 1   | F0620200    | Socket Head Capscrew M20 x 2.50 x 200  |
| 4    | 2   | F1020250    | Nylock Hex Nut M20 x 2.50              |
| 5    | 1   | 1105985     | Wldt Front Cylinder Pin                |
| 6    | 1   | 3100061     | Mach Bearing Upper Cylinder Connection |
| 7    | 1   | 1102487     | Mach Pin Keeper (Clevis)               |
| 8    | 1   | F0620130    | Socket Head Capscrew M20 x 2.50 x 130  |
| 9    | 1   | 6200002     | Grease Fitting                         |

# ASSEMBLY ACCESS COVERS

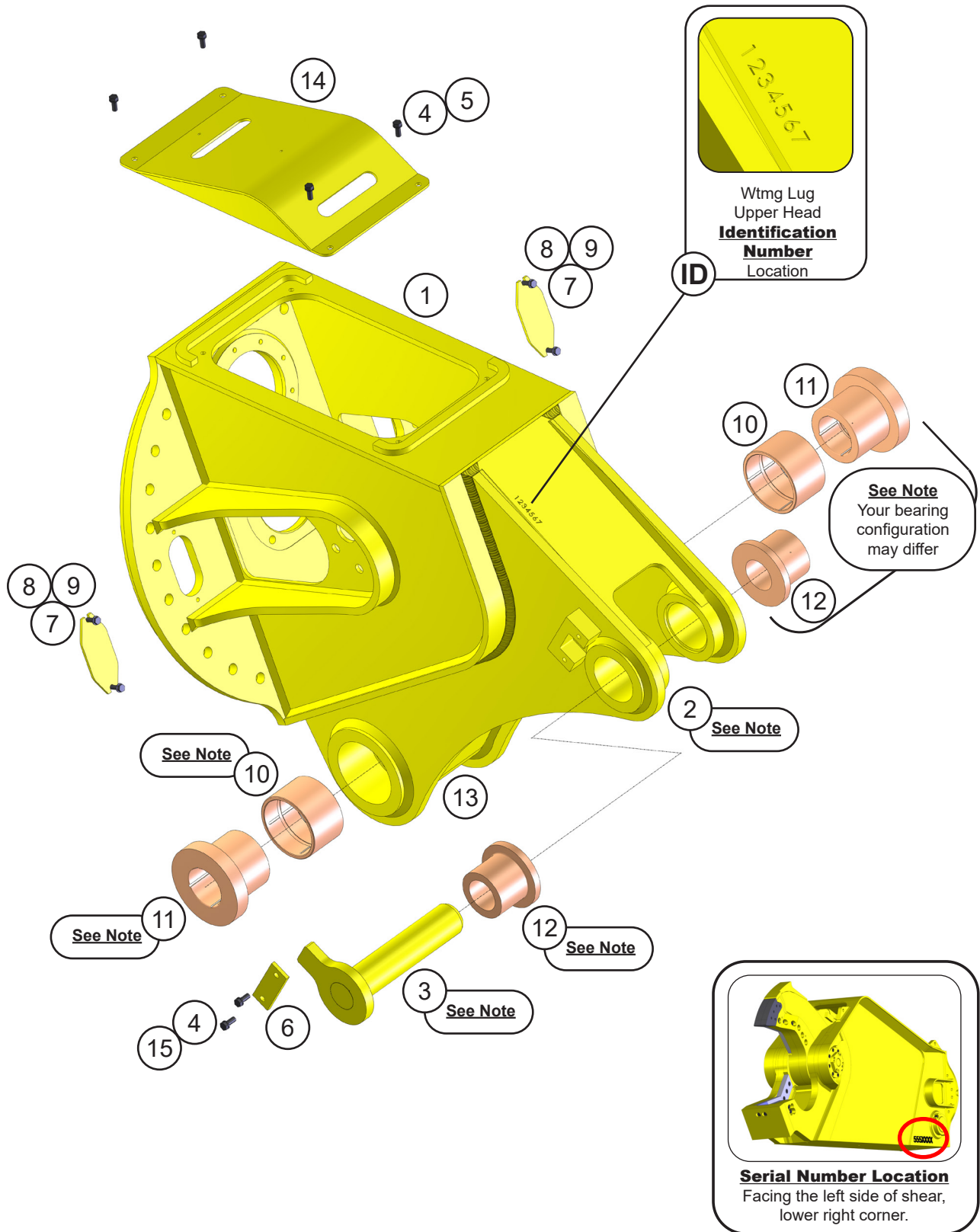




## ASSEMBLY ACCESS COVERS

| ITEM | QTY | PART NUMBER | DESCRIPTION                       |
|------|-----|-------------|-----------------------------------|
| 1    | 1   | 1107532     | Wldt Cover                        |
| 2    | 1   | 1107838     | Plt Rear Cover                    |
| 3    | 3   | 1105854     | Mach Flange Shoulder Bolt         |
| 4    | 3   | 6301112     | O-Ring                            |
| 5    | 2   | F0112030    | Hex Head Capscrew M12 x 1.75 x 30 |
| 6    | 2   | F1201224    | Flat Washer M12                   |

# ASSEMBLY UPPER HEAD



## ASSEMBLY UPPER HEAD

| ITEM | QTY | PART NUMBER | DESCRIPTION                       |
|------|-----|-------------|-----------------------------------|
| 1    | 1   | 5512420     | Wtmg Sub Head                     |
| 2    | 1   | *           | Wtmg Lug Upper Head               |
| 3    | 1   | *           | Wldt Pin                          |
| 4    | 6   | F0112030    | Hex Head Capscrew M12 x 1.75 x 30 |
| 5    | 4   | F1201224    | Flat Washer M12                   |
| 6    | 1   | 5500752     | Plt Strap                         |
| 7    | 2   | 1105883     | Plt Bolt Cover                    |
| 8    | 4   | F0110030    | Hex Head Capscrew M10 x 1.50 x 30 |
| 9    | 4   | F1201021    | Flat Washer M10                   |
| 10   | 2   | *           | Mach Bearing                      |
| 11   | 2   | *           | Mach Boom Bearing                 |
| 12   | 2   | *           | Mach Spacer Sleeve                |
| 13   | 1   | 6200002     | Grease Fitting                    |
| 14   | 1   | 1105878     | Wtmg Sub Head Cover               |
| 15   | 2   | F1401200    | Lock Washer M12                   |

\* Part numbers are Serial Number specific. For replacement parts call the Genesis Parts Department.

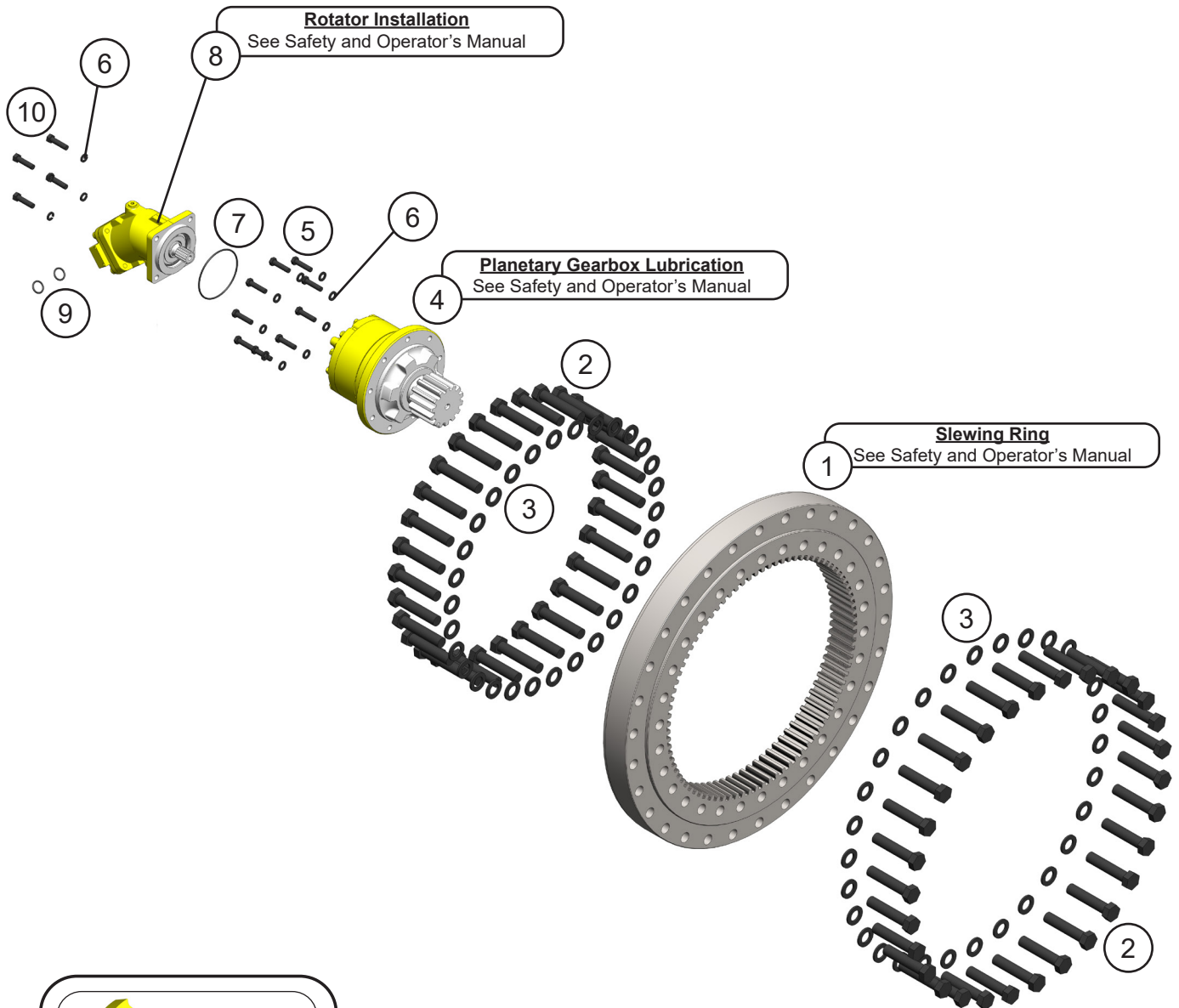
**USA**

715-395-3488

**Europe**

+49 83 31 9 25 98 0

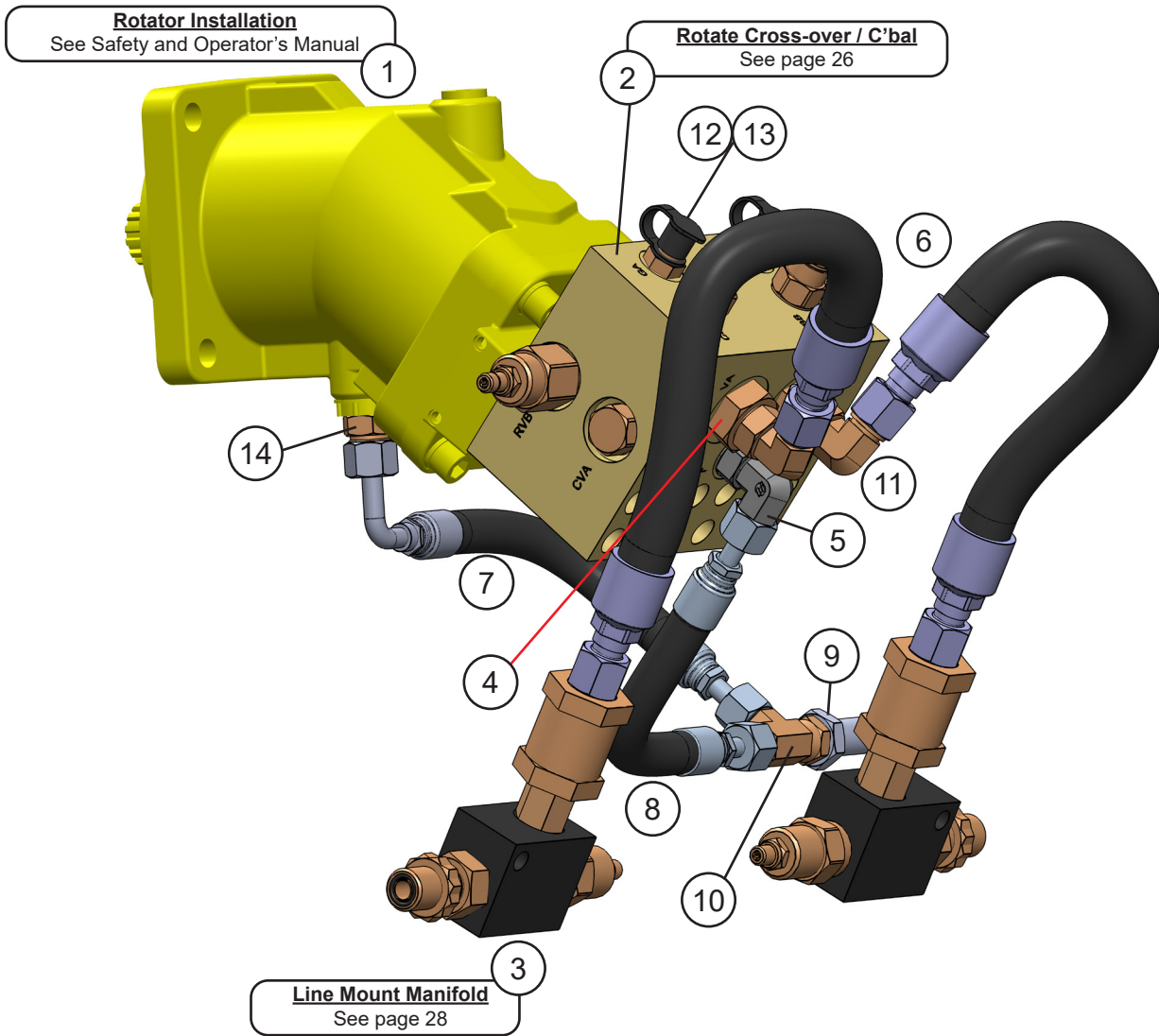
# ASSEMBLY ROTATION



## ASSEMBLY ROTATION

| ITEM | QTY | PART NUMBER | DESCRIPTION                       |
|------|-----|-------------|-----------------------------------|
| 1    | 1   | 6300429     | Bearing Slewing                   |
| 2    | 60  | F0127130    | Hex Head Capscrew M27 x 3 x 130   |
| 3    | 60  | F2802700    | Hytorc Washer                     |
| 4    | 1   | 6300445     | Gear Box                          |
| 5    | 9   | F0112050    | Hex Head Capscrew M12 x 1.75 x 50 |
| 6    | 13  | F1900050    | Wedge Lock Washer ½               |
| 7    | 1   | S0190250    | O-Ring                            |
| 8    | 1   | 6340012     | Motor                             |
| 9    | 2   | S0190214    | O-Ring                            |
| 10   | 4   | F0250150    | Hex Head Capscrew ½ - 13 x 1½     |

# ASSEMBLY ROTATION CIRCUIT

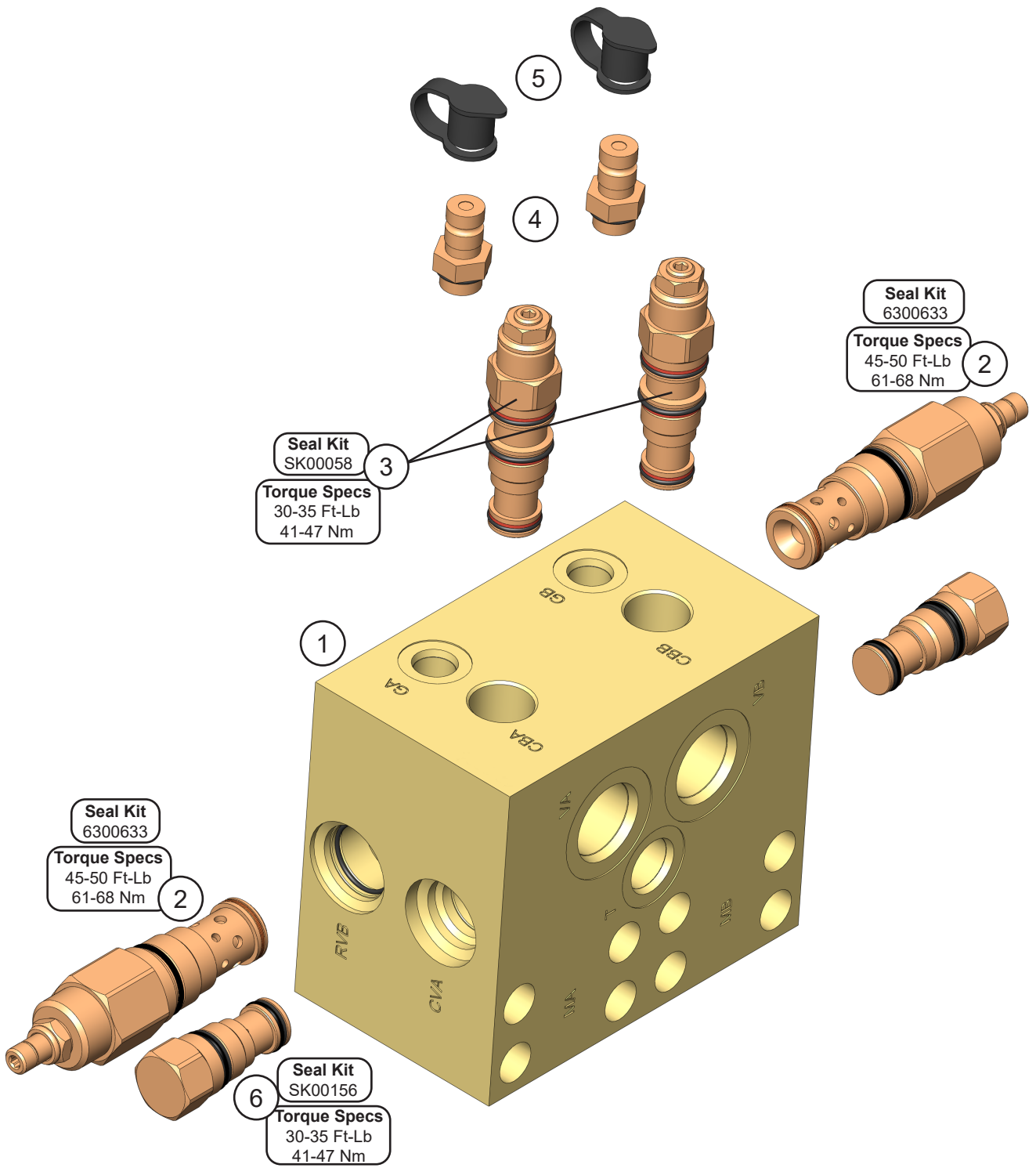


## ASSEMBLY ROTATION CIRCUIT

| ITEM | QTY | PART NUMBER | DESCRIPTION                          |
|------|-----|-------------|--------------------------------------|
| 1    | 1   | See page 22 | Assembly Rotation                    |
| 2    | 1   | See page 26 | Sub-Assembly Rotate Cross-over/C'bal |
| 3    | 2   | See page 28 | Sub-Assembly Line Mount Manifold     |
| 4    | 2   | 6300512     | Adaptor 12MB - 08FB                  |
| 5    | 1   | 6310204     | Adaptor 06MO-08MB-90                 |
| 6    | 2   | 1106466     | Hose                                 |
| 7    | 1   | 1106465     | Hose                                 |
| 8    | 1   | 1108257     | Hose                                 |
| 9    | 1   | 6310149     | Adaptor Bulkhead 06MO-06MO           |
| 10   | 1   | 6300407     | Adaptor Run Tee 06FOX-06MO-06MO      |
| 11   | 2   | 6300303     | Adaptor 08MB-08MO-90                 |
| 12   | 2   | 6300014     | Diagnostic Nipple 06MB               |
| 13   | 2   | 6310001     | Diagnostic Nipple Dust Cap           |
| 14   | 1   | 6300148     | Adaptor 06MO-08MB                    |



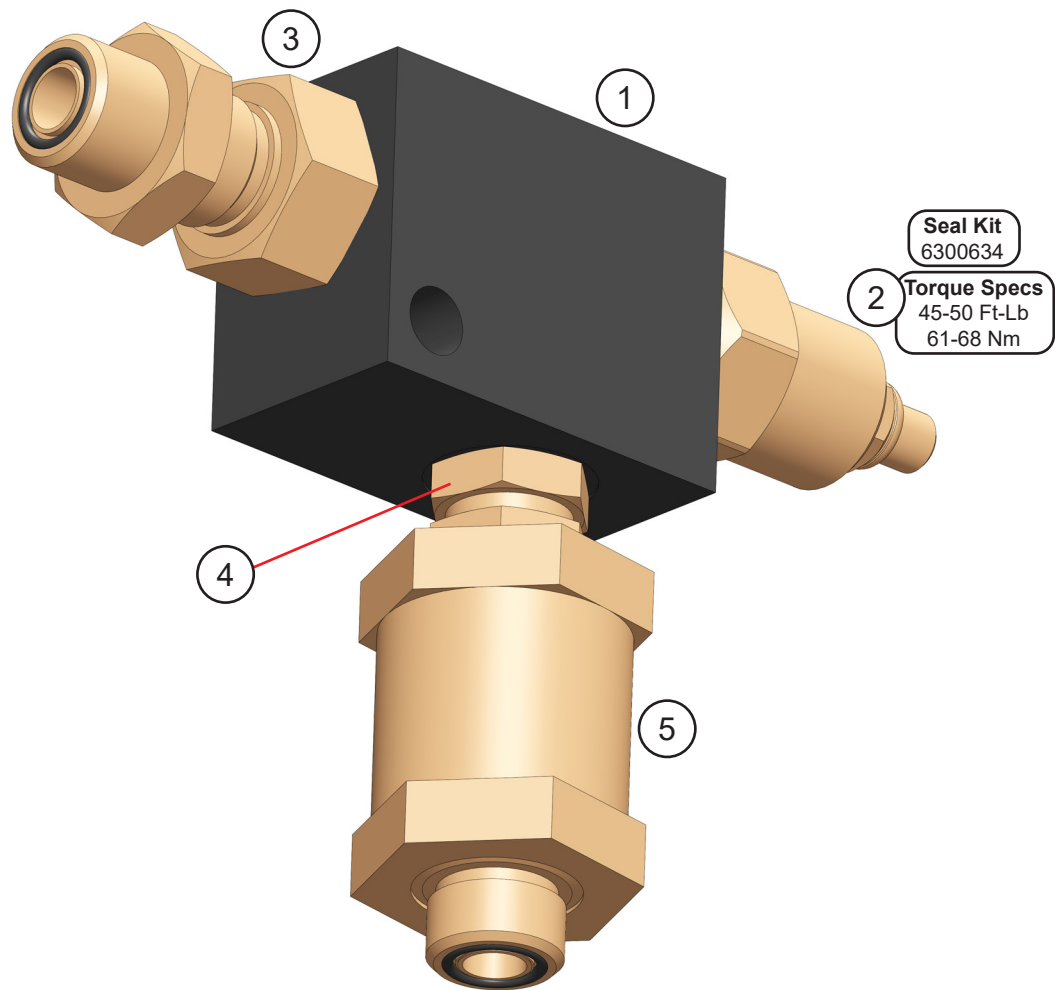
# ROTATE CROSS-OVER / C'BAL SUB-ASSEMBLY



## ROTATE CROSS-OVER / C'BAL SUB-ASSEMBLY

| ITEM | QTY | PART NUMBER | DESCRIPTION                |                         |
|------|-----|-------------|----------------------------|-------------------------|
| 1    | 1   | 6380079     | Valve Block                |                         |
| 2    | 2   | 6301241     | Valve Relief               | <b>Seal Kit 6300633</b> |
| 3    | 2   | 6380035     | Valve Counterbalance       | <b>Seal Kit SK00058</b> |
| 4    | 2   | 6300014     | Diagnostic Nipple 06MB     |                         |
| 5    | 2   | 6310001     | Diagnostic Nipple Dust Cap |                         |
| 6    | 2   | 6360088     | Valve Check                | <b>Seal Kit SK00156</b> |

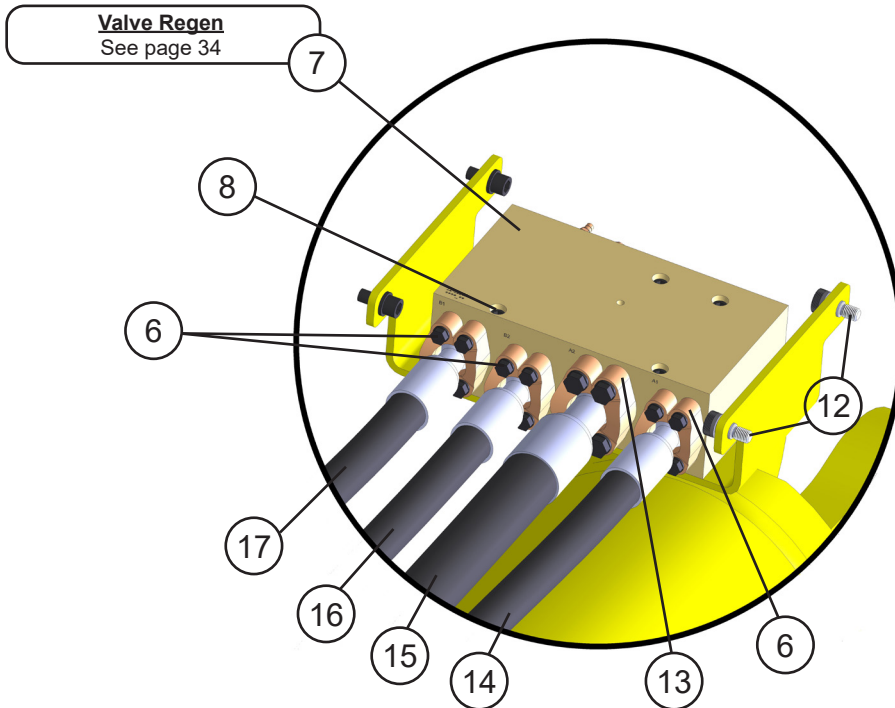
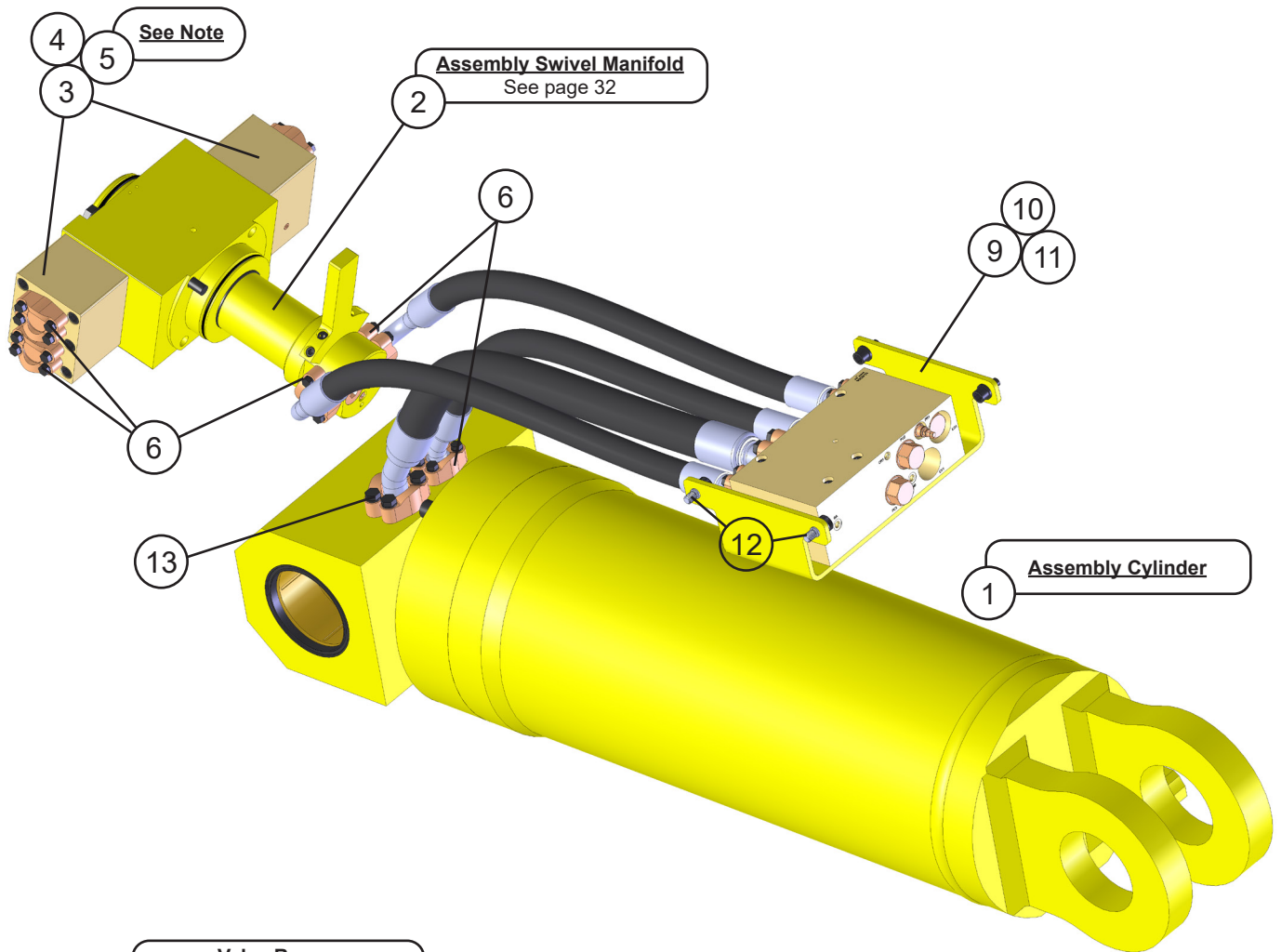
# SUB-ASSEMBLY LINE MOUNT MANIFOLD



## SUB-ASSEMBLY LINE MOUNT MANIFOLD

| ITEM | QTY | PART NUMBER | DESCRIPTION                                |
|------|-----|-------------|--|
| 1    | 1   | 6300609     | Valve Line Body                            |
| 2    | 1   | 6300361     | Valve Flow Control <b>Seal Kit 6300634</b> |
| 3    | 1   | 6300497     | Adaptor Bulkhead 08MB-08MO                 |
| 4    | 1   | 6310183     | Adaptor 08MB-08MB                          |
| 5    | 1   | 6300364     | Filter                                     |

# ASSEMBLY OPEN AND CLOSE CIRCUIT



Note:  
Item 12 is tied together  
with 0.032" lock wire.

## ASSEMBLY OPEN AND CLOSE CIRCUIT

| ITEM | QTY | PART NUMBER                    | DESCRIPTION                             |
|------|-----|--------------------------------|---|
| 1    | 1   | *                              | Assembly Cylinder B14.0 R9.0 S32.75     |
| 2    | 1   | See page 32                    | Assembly Swivel Manifold                |
| 3    | 2   | *                              | Mach Port Block                         |
| 4    | 12  | *                              | Socket Head Capscrew M16 x 2.00 x 110   |
| 5    | 4   | *                              | O-Ring                                  |
| 6    | 10  | <b>1-1/4" Split Flange Kit</b> |   |
|      | 2   | H0262125                       | Split Flange Half 1.25 Code 62          |
|      | 4   | F0112050                       | Hex Head Capscrew M12 x 1.75 x 50       |
|      | 4   | F1401200                       | Lock Washer M12                         |
|      | 1   | S0190222                       | O-Ring                                  |
| 7    | 1   | See page 34                    | Valve Regen                             |
| 8    | 4   | F0612120                       | Socket Head Capscrew M12 x 1.75 x 120   |
| 9    | 1   | 1105846                        | Mach Plt Frmd Valve Tray                |
| 10   | 2   | F0616035                       | Socket Head Capscrew M16 x 2 x 35       |
| 11   | 2   | F1201630                       | Flat Washer M16                         |
| 12   | 2   | F3616030                       | Socket Head Shoulder Screw M16 x 2 x 30 |
| 13   | 2   | <b>1-1/2" Split Flange Kit</b> |   |
|      | 2   | H0262150                       | Split Flange Half 1.50 Code 62          |
|      | 4   | F0116060                       | Hex Head Capscrew M16 x 2.00 x 60       |
|      | 4   | F1401628                       | Lock Washer M16                         |
|      | 1   | S0190225                       | O-Ring                                  |
| 14   | 1   | 1105994                        | Hose                                    |
| 15   | 1   | 1105996                        | Hose                                    |
| 16   | 1   | 1105995                        | Hose                                    |
| 17   | 1   | 1105993                        | Hose                                    |

\* Part numbers are Serial Number specific. For replacement parts call the Genesis Parts Department.

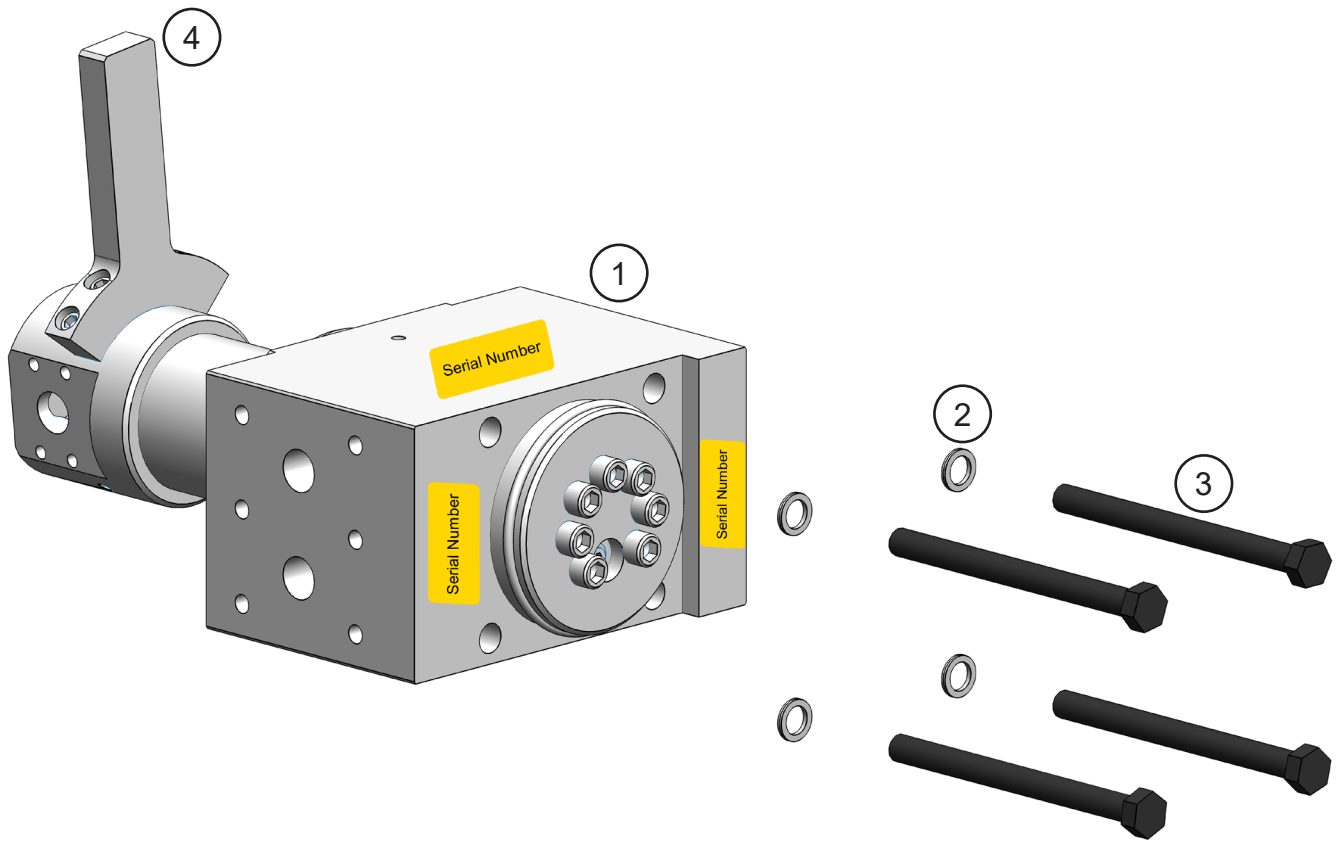
**USA**

715-395-3488

**Europe**

+49 83 31 9 25 98 0

# ASSEMBLY SWIVEL MANIFOLD





## ASSEMBLY SWIVEL MANIFOLD

| ITEM | QTY | PART NUMBER | DESCRIPTION                       |
|------|-----|-------------|-----------------------------------|
| 1    | 1   | *           | Assembly Swivel Manifold          |
| 2    | 4   | F1900075    | Wedge Lock Washer $\frac{3}{4}$   |
| 3    | 4   | F0120240    | Hex Head Capscrew M20 x 2.5 x 240 |
| 4    | 1   | *           | Torque Arm Kit                    |

\* Part numbers are Serial Number specific.

For replacement parts and seal kit, call the Genesis Parts Department.

The swivel Serial Number, located in one of the three highlighted areas, is required for **any** parts order.

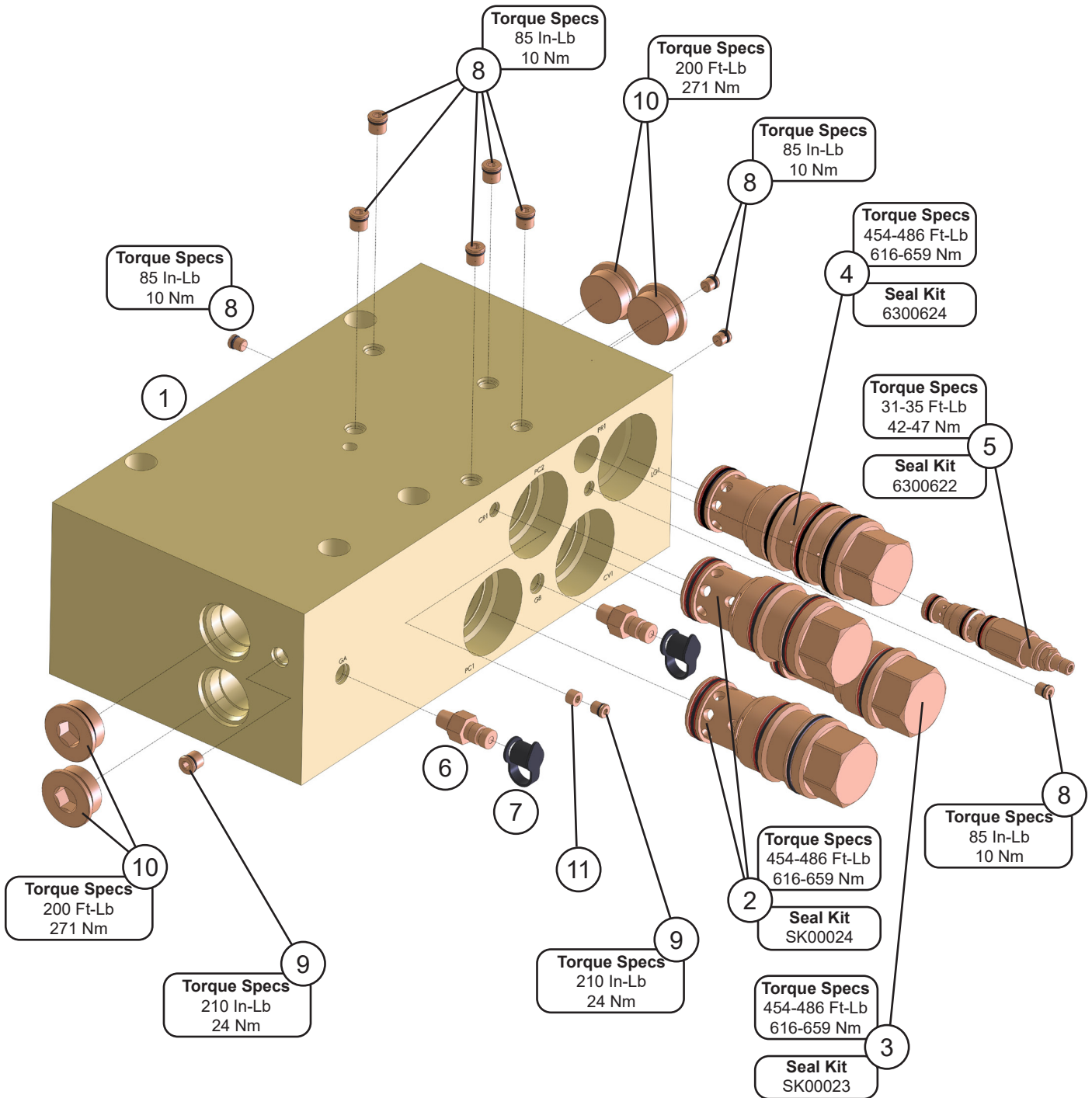
### USA

715-395-3488

### Europe

+49 83 31 9 25 98 0

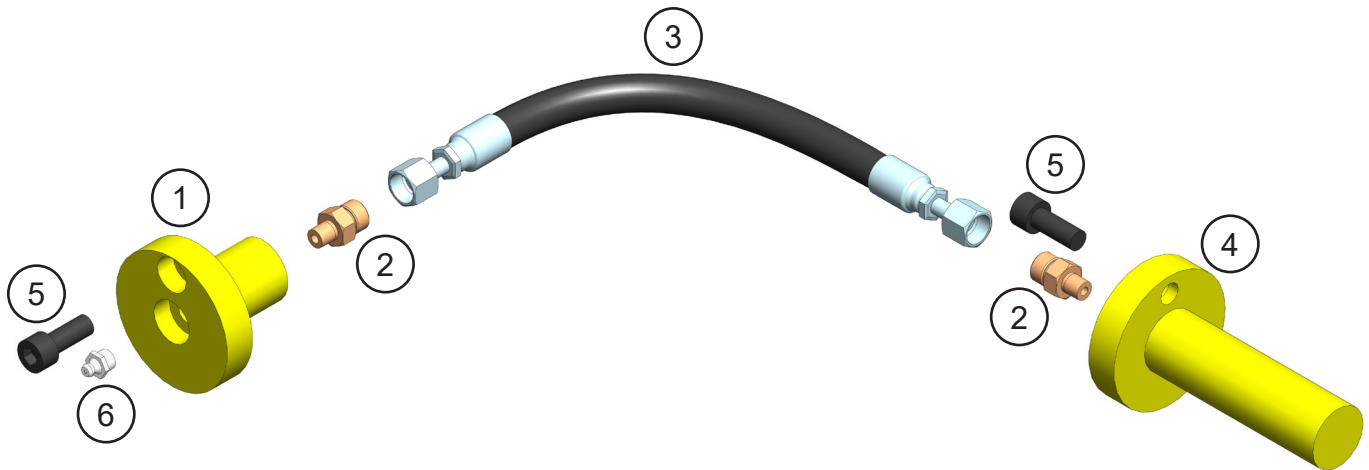
# REGEN BLOCK SUB-ASSEMBLY - 6360021



## REGEN BLOCK SUB-ASSEMBLY - 6360021

| ITEM | QTY | PART NUMBER | DESCRIPTION   |
|------|-----|-------------|---|
| 1    | 1   | 6360021     | Manifold Block <span style="float: right;"><b>Seal Kit SK00129</b></span>             |
| 2    | 2   | 6300061     | Pilot to Close Check Valve <span style="float: right;"><b>Seal Kit SK00024</b></span> |
| 3    | 1   | 6380011     | Check Valve <span style="float: right;"><b>Seal Kit SK00023</b></span>                |
| 4    | 1   | 6300623     | Logic Element <span style="float: right;"><b>Seal Kit 6300624</b></span>              |
| 5    | 1   | 6300625     | Pressure Reducing Valve <span style="float: right;"><b>Seal Kit 6300622</b></span>    |
| 6    | 2   | 6300088     | Diagnostic Nipple   |
| 7    | 2   | 6310001     | Diagnostic Nipple Dust Cap  |
| 8    | 9   | 6300075     | Plug Socket Head 02MB   |
| 9    | 4   | 6300076     | Plug Socket Head 04MB   |
| 10   | 4   | 6300078     | Plug Socket Head 16MB   |
| 11   | 1   | 6300903     | Plug Pipe Orifice 01MP 1/16-27 NPT  |

# ASSEMBLY SLEWING RING LUBRICATION



## ASSEMBLY SLEWING RING LUBRICATION

| ITEM | QTY | PART NUMBER | DESCRIPTION                          |
|------|-----|-------------|--------------------------------------|
| 1    | 1   | 5512411     | Mach Grease Bulkhead Adaptor         |
| 2    | 2   | 6300731     | Adaptor 02MP-04MO                    |
| 3    | 1   | 1105888     | Hose                                 |
| 4    | 1   | 5512419     | Mach Slewing Ring Grease Adaptor     |
| 5    | 2   | F0610025    | Socket Head Capscrew M10 x 1.50 x 25 |
| 6    | 1   | 6200002     | Grease Fitting                       |

## BOLT TORQUE SPECIFICATIONS

Reference the product Thread Treatment Diagrams on page 39 to determine whether to use wet or dry torque values for specific bolts.

Reference Procedures on page 40 for threadlocker or anti-seize application and bolt and bolt hole cleaning.

Prior to torquing, clean all bolt holes, bolts and nuts to remove dirt, grease and oil, and identify bolt type.

Never re-torque bolts that use Loctite. If a bolt becomes loose or damaged after the initial use when Loctite was applied and the bolt was torqued, the bolt must be replaced.

Never break tightened bolts loose with a torque wrench. Doing so may break the torque wrench or take it out of calibration.

Torque wrenches should be calibrated on an annual basis.

When using a torque multiplier with a torque wrench, incorrect settings will be multiplied by the ratio of the torque wrench.

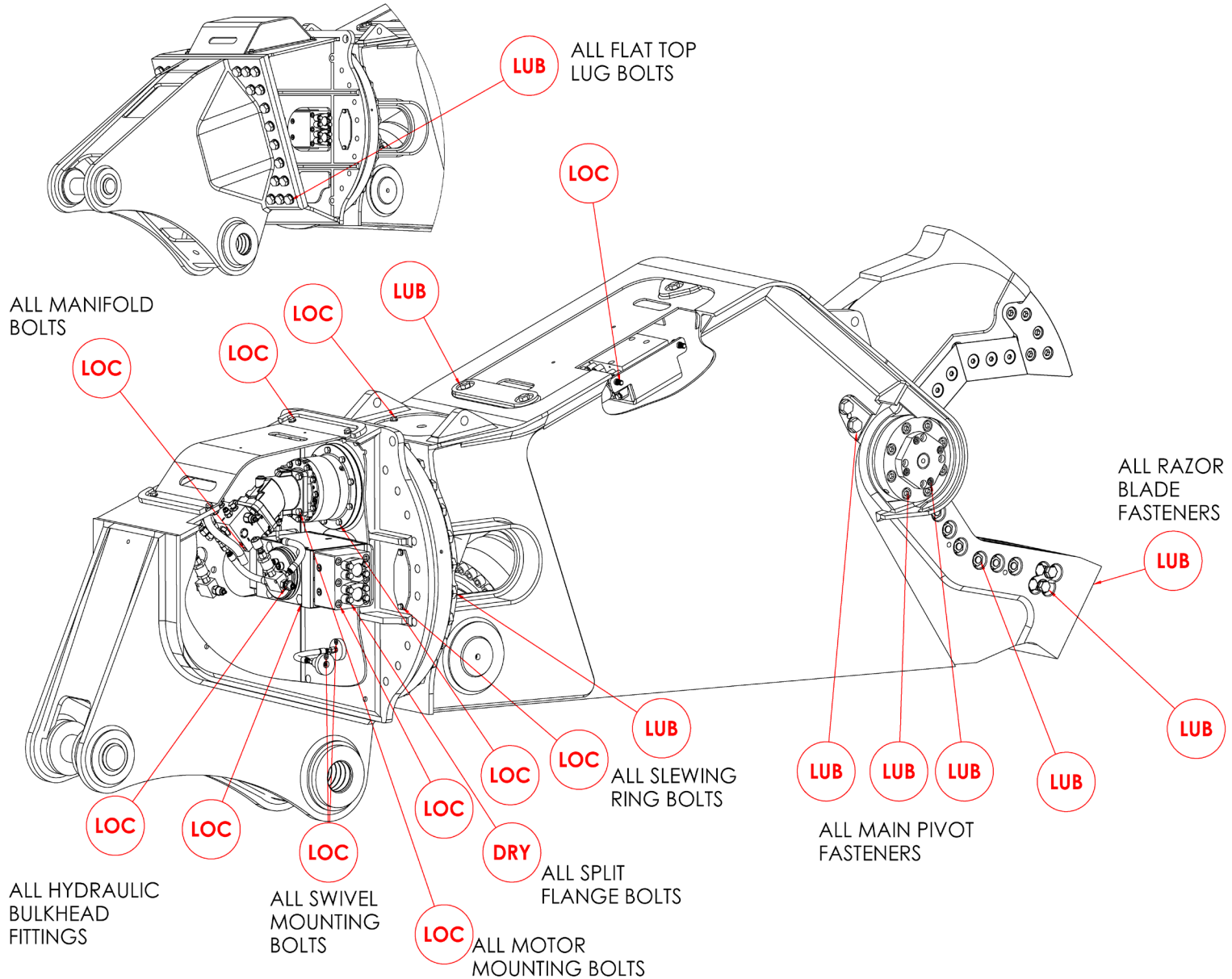
Never use an impact driver on a torque multiplier.

# THREAD TREATMENT DIAGRAM

## Mobile Shears

Use this diagram to determine what thread treatment, if any, is required for each fastener.

For thread treatment application procedures, see page 40. For prescribed torque values, see page 42.



# PROCEDURES

Reference the product Thread Treatment Diagrams on page 39 to determine which of the following procedures is required.

## Cleaning

To ensure proper performance of thread treatment and accurate torque values, clean and degrease **all internal and external threads** prior to application of threadlocker, anti-seize or primer and before installation of hardware.

- Ensure both internal and external threads are free of dirt or debris.
- Use brake cleaner or similar cleaning solvent on all threads to remove any grease or oil.
- Allow threads to dry.

## NOTICE

Failure to properly clean threads will cause threadlocker, primer, and/or anti-seize to not properly cure!

LOC

## Threadlocker

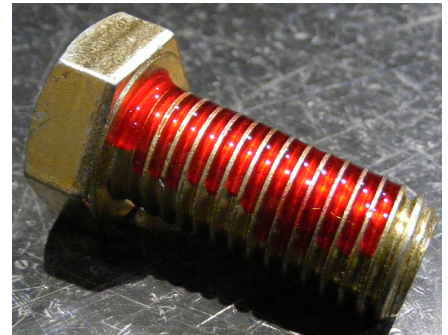
For bolted connections requiring threadlocker, use **Loctite 263** or equivalent applied using the following procedure:

- Clean and degrease all threads.
- For thru holes or nuts, apply threadlocker to bolt threads.
- For blind holes, apply stripe of threadlocker along the length of the hole (applying to the bolt can cause escaping air to remove threadlocker as the bolt is inserted).
- Torque bolt to specified **Wet Torque Value**, see page 42.

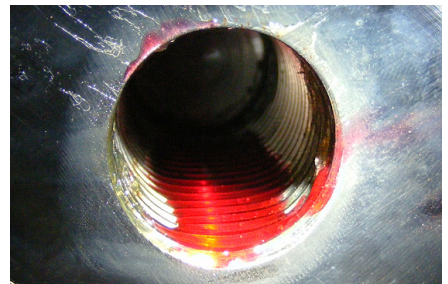
For threaded hydraulic fitting connections, use **Loctite 5452** or equivalent thread sealant in conjunction with **Loctite 7471** primer using the following procedure:

- Clean and degrease all threads.
- Apply Loctite 7471 primer to both external and internal threads and allow to dry.
- Apply threadlocker to 360 degrees of the threads on the male fitting, ensuring adequate coverage.
- Assemble fitting per directions in operator's manual.
- For O-ring boss and flat face O-ring connections, torque fittings to values specified on page 43

Threadlocker



Blind Hole



Hydraulic Fitting





## PROCEDURES

LUB

### Anti-Seize

For bolted connections requiring anti-seize lubrication, use **Loctite LB8008** or equivalent using the following procedure:

- Clean and degrease all threads.
- Apply thin coat of anti-seize to internal and external threads and under bolt head and/or nut, ensuring complete coverage.
- Torque bolt to specified **Wet Torque Value**, see page 42.

Anti-Seize

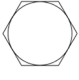
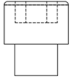
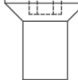


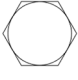
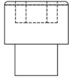
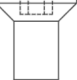
DRY

### No Thread Treatment

- Clean and degrease all threads.
- Torque bolt to specified **Dry Torque Value**, see page 42.

# BOLT TORQUE SPECIFICATIONS

| <b>Dry Torque Values</b> |              |   |       |   |       |
|--------------------------|--------------|---|-------|---|-------|
|                          |              | Hex/Socket Head   |       | Flat Head   |       |
|                          |              |   |       |  |       |
| Fastener Grade           | Size x Pitch | Nm  | Ft-lb | Nm  | Ft-lb |
| CL 10.9                  | M8 x 1.25    | 35  | 26    | 27  | 20    |
|                          | M10 x 1.50   | 71  | 53    | 58  | 42    |
|                          | M12 x 1.75   | 124   | 92    | 101   | 73    |
|                          | M14 x 1.50   | 200   | 148   | 163   | 118   |
|                          | M14 x 2.00   | 200   | 148   | 163   | 118   |
|                          | M16 x 2.00   | 311   | 230   | 254   | 184   |
|                          | M20 x 1.50   | 610   | 450   | 498   | 360   |
|                          | M20 x 2.50   | 608   | 449   | 497   | 359   |
|                          | M24 x 3.00   | 1054  | 778   | 861   | 622   |
|                          | M27 x 3.00   | 1543  | 1138  | 1260  | 910   |
|                          | M30 x 3.50   | 2095  | 1545  | 1712  | 1236  |
|                          | M36 x 4.00   | 3659  | 2699  | 2991  | 2159  |
| 8                        | 1/4-20       | 14  | 11    | 11  | 8     |
|                          | 5/16-18      | 32  | 24    | 26  | 19    |
|                          | 3/8-16       | 59  | 44    | 48  | 35    |
|                          | 7/16-14      | 94  | 70    | 77  | 56    |
|                          | 1/2-13       | 143   | 106   | 116   | 84    |
|                          | 1/2-20       | 162   | 120   | 133   | 96    |
|                          | 5/8-11       | 287   | 212   | 234   | 169   |
|                          | 3/4-10       | 509   | 376   | 415   | 300   |
|                          | 7/8-9        | 821   | 606   | 670   | 484   |
|                          | 1.00-8       | 1232  | 909   | 1007  | 727   |
|                          | 1.00-14      | 1383  | 1020  | 1130  | 816   |
|                          | 1.25-7       | 2463  | 1817  | 2013  | 1453  |
| 8/L9                     | 1.50-6       | 4287  | 3162  | 3504  | 2529  |

| <b>Wet Torque Values</b> |              |   |       |   |       |
|--------------------------|--------------|---|-------|---|-------|
|                          |              | Hex/Socket Head   |       | Flat Head   |       |
|                          |              |   |       |  |       |
| Fastener Grade           | Size x Pitch | Nm  | Ft-lb | Nm  | Ft-lb |
| CL 10.9                  | M8 x 1.25    | 29  | 22    | 23  | 17    |
|                          | M10 x 1.50   | 61  | 45    | 49  | 36    |
|                          | M12 x 1.75   | 105   | 78    | 85  | 62    |
|                          | M14 x 1.50   | 150   | 111   | 121   | 88    |
|                          | M14 x 2.00   | 170   | 126   | 138   | 100   |
|                          | M16 x 2.00   | 265   | 196   | 216   | 156   |
|                          | M20 x 1.50   | 456   | 337   | 372   | 269   |
|                          | M20 x 2.50   | 517   | 382   | 422   | 305   |
|                          | M24 x 3.00   | 894   | 660   | 731   | 528   |
|                          | M27 x 3.00   | 1312  | 968   | 1072  | 774   |
|                          | M30 x 3.50   | 1779  | 1312  | 1453  | 1049  |
|                          | M36 x 4.00   | 3110  | 2294  | 2542  | 1835  |
| 8                        | 1/4-20       | 13  | 10    | 11  | 8     |
|                          | 5/16-18      | 27  | 20    | 22  | 16    |
|                          | 3/8-16       | 50  | 37    | 40  | 29    |
|                          | 7/16-14      | 80  | 59    | 65  | 47    |
|                          | 1/2-13       | 122   | 90    | 99  | 72    |
|                          | 1/2-20       | 138   | 102   | 112   | 81    |
|                          | 5/8-11       | 244   | 180   | 199   | 144   |
|                          | 3/4-10       | 433   | 320   | 354   | 256   |
|                          | 7/8-9        | 698   | 515   | 570   | 412   |
|                          | 1.00-8       | 1046  | 772   | 854   | 617   |
|                          | 1.00-14      | 1175  | 867   | 960   | 693   |
|                          | 1.25-7       | 2095  | 1545  | 1712  | 1236  |
| 8/L9                     | 1.50-6       | 3644  | 2688  | 2979  | 2150  |

# O-RING BOSS & FLAT FACE O-RING TORQUE SPECIFICATIONS

| O-Ring Boss Torque Values |     |       |
|---------------------------|-----|-------|
| Size Dash                 | Nm  | Ft-lb |
| -4                        | 22  | 16    |
| -5                        | 27  | 20    |
| -6                        | 36  | 26    |
| -8                        | 83  | 60    |
| -10                       | 110 | 80    |
| -12                       | 187 | 135   |
| -14                       | 249 | 180   |
| -16                       | 304 | 220   |
| -20                       | 387 | 280   |
| -24                       | 498 | 360   |

| Flat Face O-Ring Torque Values |     |       |
|--------------------------------|-----|-------|
| Size Dash                      | Nm  | Ft-lb |
| -4                             | 18  | 13    |
| -6                             | 30  | 22    |
| -8                             | 60  | 44    |
| -10                            | 85  | 62    |
| -12                            | 121 | 88    |
| -14                            | 121 | 88    |
| -16                            | 160 | 116   |
| -20                            | 213 | 154   |
| -24                            | 274 | 198   |

# BOLT DRIVE SPECIFICATIONS

| Thread<br>Size x Pitch   | Hex Head  | Socket Head   | Flat Head   |
|--------------------------|---|---|---|
|                          |  |  |  |
| <b>Wrench/Drive Size</b> |   |   |   |
| M8 x 1.25                | 13mm  | 6mm   | 5mm   |
| M10 x 1.50               | 17mm  | 8mm   | 6mm   |
| M12 x 1.75               | 19mm  | 10mm  | 8mm   |
| M14 x 1.50               | 22mm  | 12mm  | 10mm  |
| M14 x 2.00               | 22mm  | 12mm  | 10mm  |
| M16 x 2.00               | 24mm  | 14mm  | 10mm  |
| M20 x 1.50               | 30mm  | 17mm  | 12mm  |
| M20 x 2.50               | 30mm  | 17mm  | 12mm  |
| M24 x 3.00               | 36mm  | 19mm  | 14mm  |
| M27 x 3.00               | 41mm  | 19mm  | -   |
| M30 x 3.50               | 46mm  | 22mm  | -   |
| M36 x 4.00               | 55mm  | 27mm  | -   |
| 1/4-20                   | 7/16"   | 3/16"   | 5/32"   |
| 5/16-18                  | 1/2"  | 1/4"  | 3/16"   |
| 3/8-16                   | 9/16"   | 5/16"   | 7/32"   |
| 7/16-14                  | 5/8"  | 3/8"  | 1/4"  |
| 1/2-13                   | 3/4"  | 3/8"  | 5/16"   |
| 1/2-20                   | 3/4"  | 3/8"  | 5/16"   |
| 5/8-11                   | 15/16"  | 1/2"  | 3/8"  |
| 3/4-10                   | 1-1/8"  | 5/8"  | 1/2"  |
| 7/8-9                    | 1-5/16"   | 3/4"  | 9/16"   |
| 1.00-8                   | 1-1/2"  | 3/4"  | 5/8"  |
| 1.00-14                  | 1-1/2"  | 3/4"  | 5/8"  |
| 1.25-7                   | 1-7/8"  | 7/8"  | 7/8"  |
| 1.50-6                   | 2-1/4"  | 1"  | 1"  |

# WARRANTY

## **Claim Procedure**

Notify the Genesis Service Department of the potential warranty claim prior to making the repair. Digital pictures are very helpful for diagnosing problems and recommending repairs.

Contact the Genesis Service Department before making alterations, changes or repairs to any component that is going to be considered for warranty. Not doing so will void all Genesis warranty consideration.

The Genesis Service Department will issue an authorization number to track the repair costs, outgoing parts, and/or defective parts returning to the factory.

Replacement parts must be ordered using a purchase order number. Shipping is standard ground. Overnight shipping is available by request, and Genesis will not cover the shipping charge.

When the repair is complete, submit an invoice to the Genesis Service Department within 30 days. Include itemized internal labor reporting, parts lists and invoices for outside contractors. Reference the authorization number on all invoices.

When returning parts for warranty consideration, include a copy of any related Genesis paperwork along with any other necessary documentation to ensure proper processing and credit. The Genesis Service Department will provide the necessary forms.

Your account will be credited when the warranty claim is accepted.

## **Blade Warranty**

Standard warranty on blades will only be considered on the first edge, and wear on the edge must be 1/8" radius or less. Genesis does not warranty cutting blades that are cracked or broken from top to bottom (perpendicular to the long edge of the blade). Genesis also does not cover fasteners, the labor to replace wear components or collateral damage, such as blade seats, from broken blades, the piercing blade tang or adjustment plates.

**Please direct any questions to the Genesis Service Department: 715-395-5252**

# PARTS ORDER POLICY AND PROCEDURE

## **Parts Orders Should Include**

- Purchase order number
- Model and serial number of attachment
- Part number and quantity needed
- Shipping and billing address
- Method of shipment or required delivery date

## **Placing Orders**

Orders may be placed by phone or e-mail. To e-mail an order, use the form on the following page or your purchase order form. Contact information is located at the front of this manual.

## **Part Numbers**

Part numbers are listed in a separate Parts Manual or, if included, the Parts section of this manual. Contact the Genesis Parts Department with questions regarding part numbers, availability and pricing.

## **Shipping**

All orders will be shipped best way surface unless an alternate shipping method is requested. Shipping charges are not included in the purchase price of parts.

## **Invoices**

All invoices are due upon receipt. Any accounts with invoices open beyond 60 days are subject to review and may be placed on C.O.D. status without further notice.

## **Returns**

Many unused Genesis parts may be returned with proper documentation. Return shipping is the responsibility of the purchaser. Credit will be issued upon return, less a 25% restocking fee. Documentation is required for credit of returned parts. Contact the Genesis Service Department at 715-395-5252 for an RGA (Return Goods Authorization) number and form. An RGA must accompany every return. Items shipped without an RGA may be returned to sender.

## **Warranty Returns**

All parts returned to Genesis for warranty consideration must be returned with a completed RGA (Return Goods Authorization) provided by the Genesis Service Department. The form needs to be completed in its entirety, including any additional information requested by the Service Department. Return shipping is the responsibility of the sender and will be credited upon claim approval. A determination to accept or deny the claim will be made based upon the information available to Genesis. Warranty on purchased parts other than wear components is 6 months. Genesis does not cover labor costs to replace purchased parts replaced under warranty. There is no warranty period on wear parts or components.



# PARTS ORDER FORM

Customer: \_\_\_\_\_ Date: \_\_\_\_\_

Phone: \_\_\_\_\_ Contact: \_\_\_\_\_

Shipping Address: \_\_\_\_\_ E-mail: \_\_\_\_\_

\_\_\_\_\_ Billing Address: \_\_\_\_\_

\_\_\_\_\_

Purchase Order: \_\_\_\_\_ Shipping Method: \_\_\_\_\_

Model: \_\_\_\_\_ Serial Number: \_\_\_\_\_

| Quantity | Part Number | Description | Price |
|----------|-------------|-------------|-------|
|          |             |             |       |
|          |             |             |       |
|          |             |             |       |
|          |             |             |       |
|          |             |             |       |
|          |             |             |       |
|          |             |             |       |
|          |             |             |       |
|          |             |             |       |
|          |             |             |       |
|          |             |             |       |
|          |             |             |       |
|          |             |             |       |
|          |             |             |       |
|          |             |             |       |
|          |             |             |       |

E-mail to the Genesis Parts Department: [genesisparts@genesisattachments.com](mailto:genesisparts@genesisattachments.com)  
For assistance, call 715-395-5252

# INDEX

- 1-1/2" Split Flange Kit 31
- 1-1/4" Split Flange Kit 31
- 1101957 Mach Blade Razor 11
- 1102442 Mach Thrust Washer 7, 9
- 1102444 Mach End Cap 7, 9
- 1102446 Mach Tie Rod Nut 7, 9
- 1102448 Shim Set Thrust Washer 7, 9
- 1102487 Mach Pin Keeper (Clevis) 17
- 1102857 Mach Bolt Socket Head Capscrew 1¼ - 7 x 4½  
Custom 13
- 1103125 Mach Bearing 7, 9
- 1103172 Mach Pin Keeper Rear 17
- 1105721 Mach Blade 11, 13
- 1105722 Mach Blade Guide 11
- 1105723 Blade Shim Set 11
- 1105724 Guide Blade Shim Set 11
- 1105725 Guide Blade Shim Set 11
- 1105821 Mach Adjustment Plate Secondary 11
- 1105840 Mach Blade Tip RH 13
- 1105841 Mach Blade Tip LH 13
- 1105846 Mach Plt Frmd Valve Tray 31
- 1105854 Mach Flange Shoulder Bolt 19
- 1105856 Mach Tie Rod 7
- 1105863 Mach Adjustment Plate Primary 11
- 1105865 Mach Guide Blade Adjustment Plate 11
- 1105867 Mach Guide Blade Adjustment Plate 11
- 1105878 Wtmg Sub Head Cover 21
- 1105883 Plt Bolt Cover 21
- 1105888 Hose 37
- 1105943 Mach Pin Rear 17
- 1105985 Wldt Front Cylinder Pin 17
- 1105993 Hose 31
- 1105994 Hose 31
- 1105995 Hose 31
- 1105996 Hose 31
- 1106465 Hose 25
- 1106466 Hose 25
- 1106478 Shim Set, Auto Guide 15
- 1107532 Wldt Cover 19
- 1107838 Plt Rear Cover 19
- 1108257 Hose 25
- 3100061 Mach Bearing Upper Cylinder Connection 17
- 5500752 Plt Strap 21
- 5512411 Mach Grease Bulkhead Adaptor 37
- 5512419 Mach Slewing Ring Grease Adaptor 37
- 5512420 Wtmg Sub Head 21
- 6200002 Grease Fitting 7, 9, 15, 17, 21, 37
- 6300014 Diagnostic Nipple 06MB 25, 27
- 6300061 Pilot to Close Check Valve 35
- 6300075 Plug Socket Head 02MB 35
- 6300076 Plug Socket Head 04MB 35
- 6300078 Plug Socket Head 16MB 35
- 6300088 Diagnostic Nipple 35
- 6300148 Adaptor 06MO-08MB 25
- 6300303 Adaptor 08MB-08MO-90 25
- 6300361 Valve Flow Control 29
- 6300364 Filter 29
- 6300407 Adaptor Run Tee 06FOX-06MO-06MO 25
- 6300429 Bearing Slewing 23
- 6300445 Gear Box 23
- 6300497 Adaptor Bulkhead 08MB-08MO 29
- 6300512 Adaptor 12MB - 08FB 25
- 6300609 Valve Line Body 29
- 6300623 Logic Element 35
- 6300625 Pressure Reducing Valve 35
- 6300731 Adaptor 02MP-04MO 37
- 6300903 Plug Pipe Orifice 01MP 1/16-27 NPT 35
- 6301112 O-Ring 19
- 6301241 Valve Relief 27
- 6310001 Diagnostic Nipple Dust Cap 25, 27, 35
- 6310149 Adaptor Bulkhead 06MO-06MO 25
- 6310183 Adaptor 08MB-08MB 29
- 6310204 Adaptor 06MO-08MB-90 25
- 6340012 Motor 23
- 6360021 Manifold Block 35
- 6360088 Valve Check 27
- 6380011 Check Valve 35
- 6380035 Valve Counterbalance 27
- 6380079 Valve Block 27
- Assembly Access Covers 5, 18, 19
- Assembly Auto Guide 5, 14, 15
- Assembly Cylinder B14.0 R9.0 S32.75 31
- Assembly Cylinder Pins 5, 16, 17
- Assembly Lower Blades 5, 10, 11
- Assembly Open and Close Circuit 5, 30, 31
- Assembly Pivot Group - Left Side 5, 8, 9
- Assembly Pivot Group - Right Side 5, 6, 7
- Assembly Rotation 5, 22, 23, 25
- Assembly Rotation Circuit 5, 24, 25
- Assembly Slewing Ring Lubrication 5, 36, 37
- Assembly Swivel Manifold 5, 31, 33
- Assembly Swivel Manifold - 6350063 32, 33
- Assembly Upper Blades 5, 12, 13
- Assembly Upper Head 5, 20, 21
- Bolt Drive Specifications 44
- Bolt Torque Specifications 38, 42
- Contact Information 2, 50
- F0110030 Hex Head Capscrew M10 x 1.50 x 30 21
- F0112030 Hex Head Capscrew M12 x 1.75 x 30 19
- F0112030 Hex Head Capscrew M12 x 1.75 x 30 21
- F0112050 Hex Head Capscrew M12 x 1.75 x 50 23, 31
- F0116060 Hex Head Capscrew M16 x 2.00 x 60 31
- F0120240 Hex Head Capscrew M20 x 2.5 x 240 33
- F0127130 Hex Head Capscrew M27 x 3 x 130 23
- F0210175 Hex Head Capscrew 1 - 8 x 1¼ 11
- F0210500 Hex Head Capscrew 1 - 8 x 5 11, 15
- F0210600 Hex Head Capscrew 1 - 8 x 6 11
- F0250150 Hex Head Capscrew ½ - 13 x 1½ 23
- F0412030 Flat Head Capscrew M12 x 1.75 x 30 7, 9
- F0510550 Flat Head Capscrew 1 - 8 x 5½ 13



# INDEX

|  |              |  |               |
|--|--------------|--|---------------|
| F0510600 Flat Head Capscrew 1 - 8 x 6                | 11           | Seal Kit SK00129                       | 35            |
| F0510700 Flat Head Capscrew 1 - 8 x 7                | 13           | Seal Kit SK00156                       | 26, 27        |
| F0610025 Socket Head Capscrew M10 x 1.50 x 25        | 37           | Socket Head Capscrew M16 x 2.00 x 110  | 31            |
| F0612040 Socket Head Capscrew M12 x 1.75 x 40        | 7, 9         | Sub-Assembly Line Mount Manifold       | 5, 25, 28, 29 |
| F0612045 Socket Head Capscrew M12 x 1.75 x 45        | 7, 9         | Sub-Assembly Rotate Cross-over / C'bal | 5             |
| F0612120 Socket Head Capscrew M12 x 1.75 x 120       | 31           | Sub-Assembly Rotate Cross-over/C'bal   | 25            |
| F0616035 Socket Head Capscrew M16 x 2 x 35           | 31           | Table of Contents                      | 3             |
| F0620100 Socket Head Capscrew M20 x 2.50 x 100       | 7, 9         | Thread Treatment Diagram               | 39            |
| F0620130 Socket Head Capscrew M20 x 2.50 x 130       | 17           | Torque Arm Kit                         | 33            |
| F0620200 Socket Head Capscrew M20 x 2.50 x 200       | 17           | Valve Regen                            | 31            |
| F0910008 Hex Nut 1 - 8                               | 11, 13       | Warranty                               | 45            |
| F1020250 Nylock Hex Nut M20 x 2.50                   | 17           | Wldt Pin                               | 21            |
| F1201021 Flat Washer M10                             | 21           | Wtmg Lug Upper Head                    | 5, 21         |
| F1201224 Flat Washer M12                             | 7, 9, 19, 21 | Wtmg Stick                             | 5             |
| F1201630 Flat Washer M16                             | 31           | Wtmg Upper                             | 5             |
| F1202037 Flat Washer M20                             | 7, 9         |  |               |
| F1300100 Flat Washer Narrow 1"                       | 11, 13, 15   |  |               |
| F1401200 Lock Washer M12                             | 21, 31       |  |               |
| F1401628 Lock Washer M16                             | 31           |  |               |
| F1900050 Wedge Lock Washer 1/2                       | 23           |  |               |
| F1900075 Wedge Lock Washer 3/4                       | 33           |  |               |
| F2510100 Set Screw Socket Head 1 - 8 x 1             | 11           |  |               |
| F2802700 Hytorc Washer                               | 23           |  |               |
| F3616030 Socket Head Shoulder Screw M16 x 2 x 30     | 31           |  |               |
| General Arrangement                                  | 4, 5         |  |               |
| H0262125 Split Flange Half 1.25 Code 62              | 31           |  |               |
| H0262150 Split Flange Half 1.50 Code 62              | 31           |  |               |
| Mach Bearing   | 21           |  |               |
| Mach Boom Bearing                                    | 21           |  |               |
| Mach Main Shaft                                      | 9            |  |               |
| Mach Port Block                                      | 31           |  |               |
| Mach Spacer Sleeve                                   | 21           |  |               |
| O-Ring   | 31           |  |               |
| O-Ring Boss & Flat Face O-Ring Torque Specifications | 43           |  |               |
| Parts Order Form                                     | 47           |  |               |
| Parts Order Policy and Procedure                     | 46           |  |               |
| Procedures   | 40, 41       |  |               |
| Regen Block Sub-Assembly - 6360021                   | 5, 34, 35    |  |               |
| Rotate Cross-over / C'bal Sub-Assembly               | 26, 27       |  |               |
| S0190214 O-Ring                                      | 23           |  |               |
| S0190222 O-Ring                                      | 31           |  |               |
| S0190225 O-Ring                                      | 31           |  |               |
| S0190244 O-Ring                                      | 7, 9         |  |               |
| S0190250 O-Ring                                      | 23           |  |               |
| Seal Kit 6300622                                     | 34, 35       |  |               |
| Seal Kit 6300624                                     | 34, 35       |  |               |
| Seal Kit 6300633                                     | 26, 27       |  |               |
| Seal Kit 6300634                                     | 28, 29       |  |               |
| Seal Kit SK00023                                     | 34, 35       |  |               |
| Seal Kit SK00024                                     | 34, 35       |  |               |
| Seal Kit SK00058                                     | 26, 27       |  |               |



**GENESIS®**

The Promise of Performance.

## CONTACT INFORMATION

### Genesis Attachments

1000 Genesis Drive  
Superior, WI 54880 USA

Toll Free: 888-SHEAR-IT  
(888-743-2748)

Phone: 715.395.5252

E-mail:  
info@genesisattachments.com

### Europe/Africa/Middle East Genesis GmbH

Teramostrasse 23  
87700 Memmingen, Germany

Phone: +49 83 31 9 25 98 0

Fax: +49 83 31 9 25 98 80

genesis-europe.com

E-mail:  
info@genesis-europe.com

### Asia Pacific Representative Office

24 Upper Serangoon View #12-28  
Singapore 534205

Phone: +65 9673 9730

E-mail:  
tchoo@genesisattachments.com

### Central America & Colombia

Cra 13A #89-38 / Ofi 613  
Bogota, Colombia

Phone: +57 1 610 8160 / 795 8747

E-mail:  
contact@themsagroup.com

View and download all manuals: [genesisattachments.com/manuals](http://genesisattachments.com/manuals)

Patents: [genesisattachments.com/products/patents](http://genesisattachments.com/products/patents)