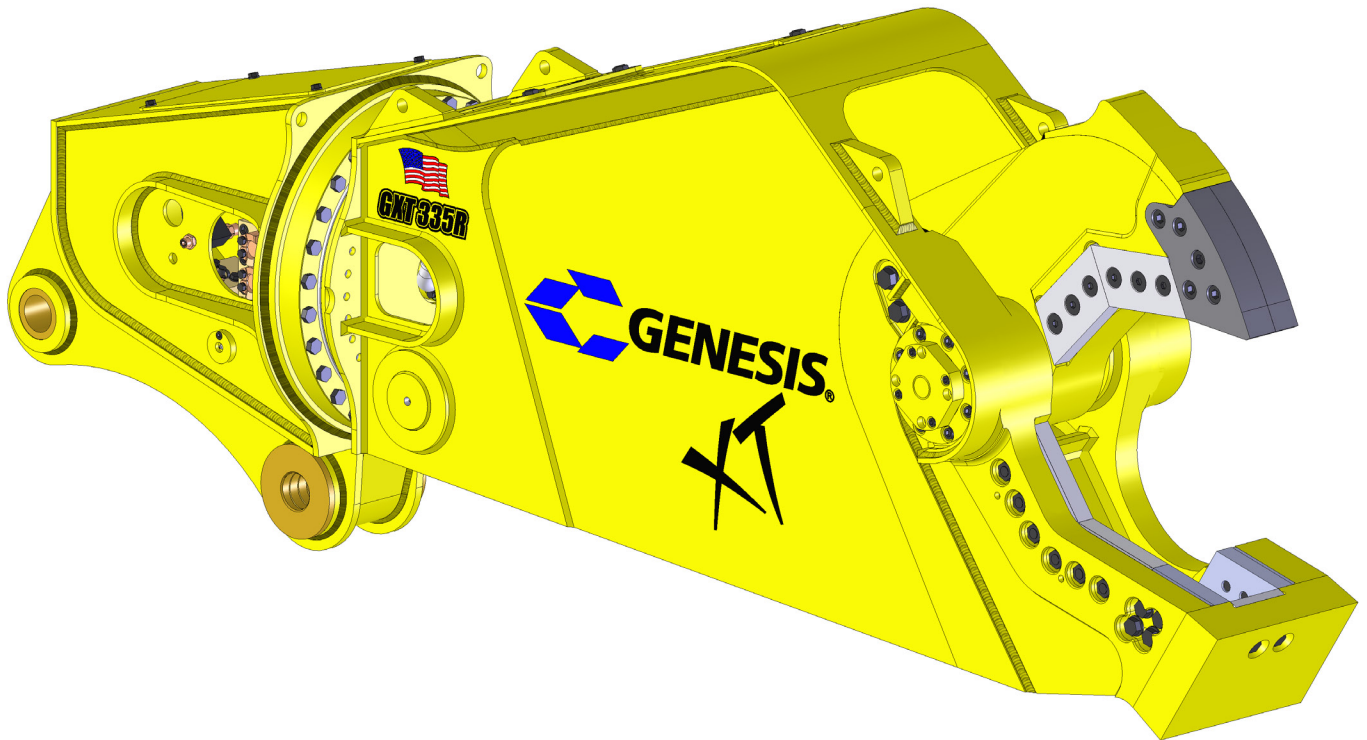


**GENESIS**<sup>®</sup>

The Promise of Performance.

# GXT 335R Mobile Shear

## PARTS MANUAL



## CONTACT INFORMATION

### Genesis Attachments

1000 Genesis Drive  
Superior, WI 54880 USA

Toll Free: 888-SHEAR-IT  
(888-743-2748)

Phone: 715.395.5252

E-mail:  
info@genesisattachments.com

### Europe/Africa/Middle East Genesis GmbH

Teramostrasse 23  
87700 Memmingen, Germany

Phone: +49 83 31 9 25 98 0  
Fax: +49 83 31 9 25 98 80  
genesis-europe.com

E-mail:  
info@genesis-europe.com

### Asia Pacific Representative Office

24 Upper Serangoon View #12-28  
Singapore 534205

Phone: +65 9673 9730

E-mail:  
tchoo@genesisattachments.com

### Central America & Colombia

Cra 13A #89-38 / Ofi 613  
Bogota, Colombia

Phone: +57 1 610 8160 / 795 8747

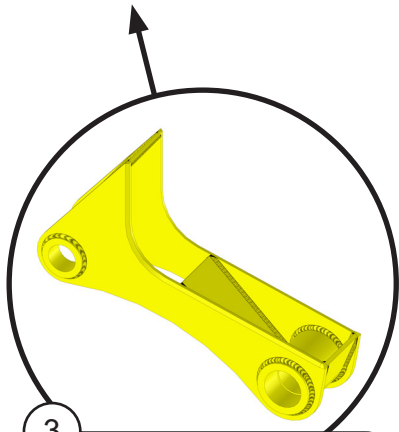
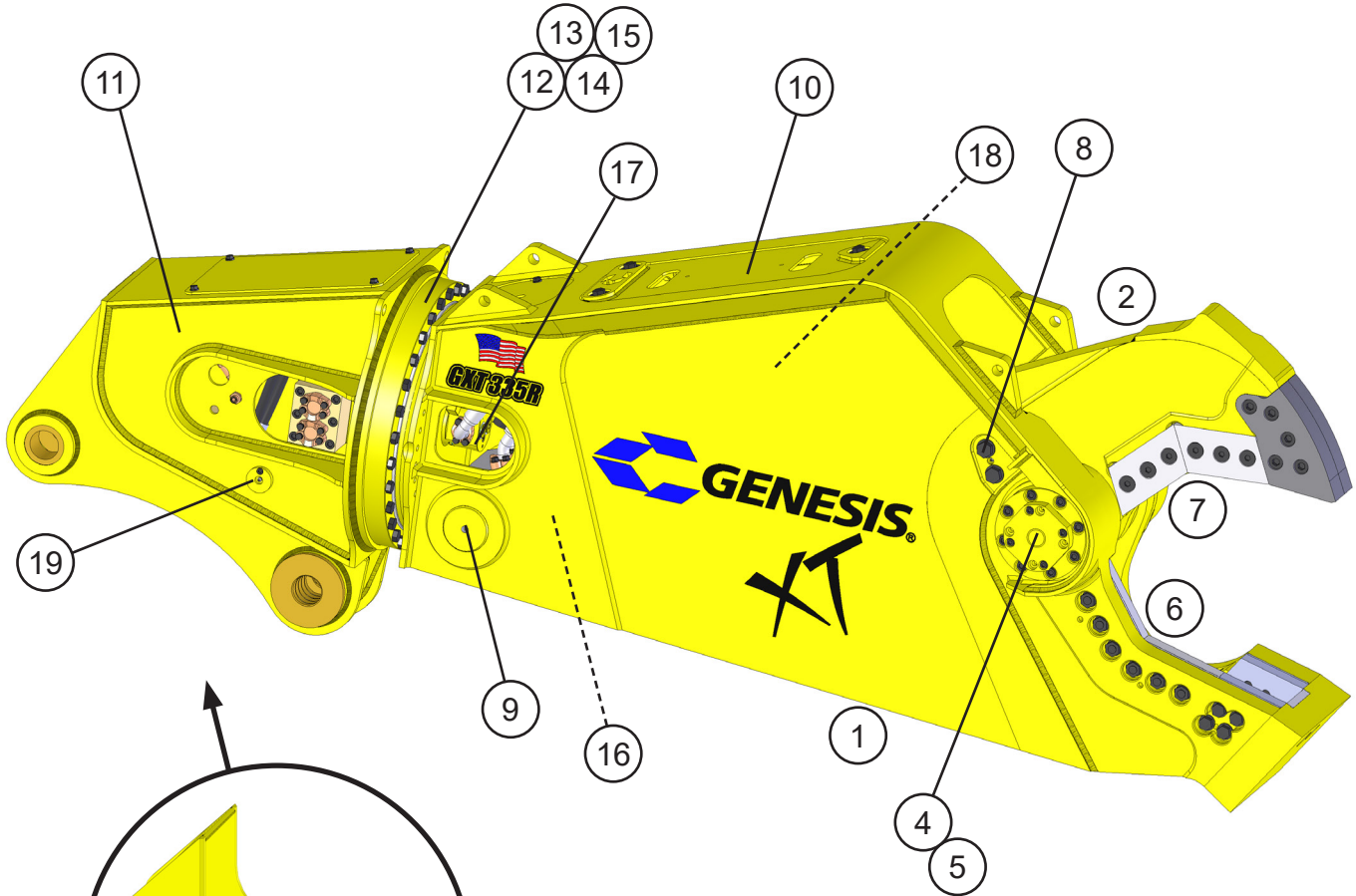
E-mail:  
contact@themsagroup.com

View and download all manuals: [genesisattachments.com/manuals](https://genesisattachments.com/manuals)  
Patents: [genesisattachments.com/products/patents](https://genesisattachments.com/products/patents)

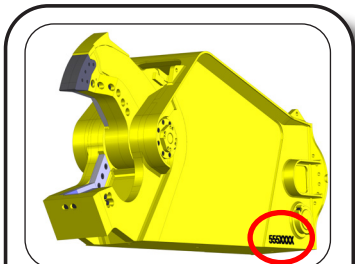
# TABLE OF CONTENTS

<b>CONTACT INFORMATION</b> .....	<b>2</b>
<b>GENERAL ARRANGEMENT</b> .....	<b>4</b>
<b>ASSEMBLY PIVOT GROUP - RIGHT SIDE</b> .....	<b>6</b>
<b>ASSEMBLY PIVOT GROUP - LEFT SIDE</b> .....	<b>8</b>
<b>ASSEMBLY LOWER BLADES</b> .....	<b>10</b>
<b>ASSEMBLY UPPER BLADES</b> .....	<b>12</b>
<b>ASSEMBLY AUTO GUIDE</b> .....	<b>14</b>
<b>ASSEMBLY CYLINDER PINS</b> .....	<b>16</b>
<b>ASSEMBLY ACCESS COVERS</b> .....	<b>18</b>
<b>ASSEMBLY UPPER HEAD</b> .....	<b>20</b>
<b>ASSEMBLY ROTATION</b> .....	<b>22</b>
<b>ASSEMBLY ROTATION CIRCUIT - 2ND MEMBER</b> .....	<b>24</b>
<b>ASSEMBLY ROTATION CIRCUIT - 3RD MEMBER</b> .....	<b>26</b>
<b>SUB-ASSEMBLY ROTATE CROSS-OVER / C'BAL</b> .....	<b>28</b>
<b>SUB-ASSEMBLY LINE MOUNT MANIFOLD</b> .....	<b>30</b>
<b>ASSEMBLY OPEN AND CLOSE CIRCUIT</b> .....	<b>32</b>
<b>ASSEMBLY SWIVEL MANIFOLD</b> .....	<b>34</b>
<b>REGEN BLOCK SUB-ASSEMBLY</b> .....	<b>36</b>
<b>ASSEMBLY SLEWING RING LUBRICATION</b> .....	<b>38</b>
<b>BOLT TORQUE SPECIFICATIONS</b> .....	<b>40</b>
<b>THREAD TREATMENT DIAGRAM</b> .....	<b>41</b>
Mobile Shears.....	41
<b>PROCEDURES</b> .....	<b>42</b>
Cleaning.....	42
Threadlocker.....	42
Anti-Seize.....	43
No Thread Treatment.....	43
<b>BOLT TORQUE SPECIFICATIONS</b> .....	<b>44</b>
Dry Torque Values.....	44
Wet Torque Values.....	44
<b>O-RING BOSS &amp; FLAT FACE O-RING TORQUE SPECIFICATIONS</b> .....	<b>45</b>
<b>BOLT DRIVE SPECIFICATIONS</b> .....	<b>46</b>
<b>WARRANTY</b> .....	<b>47</b>
Claim Procedure.....	47
Blade Warranty.....	47
<b>PARTS ORDER POLICY AND PROCEDURE</b> .....	<b>48</b>
Parts Orders Should Include.....	48
Placing Orders.....	48
Part Numbers.....	48
Shipping.....	48
Invoices.....	48
Returns.....	48
Warranty Returns.....	48
<b>PARTS ORDER FORM</b> .....	<b>49</b>
<b>INDEX</b> .....	<b>50</b>
<b>CONTACT INFORMATION</b> .....	<b>52</b>

# GENERAL ARRANGEMENT



**3**  
**Wtmq Lug Upper Head**  
 Part Number is Serial Number specific.  
 For replacement parts call the Genesis  
 Parts Department.  
**USA**                      **Europe**  
 715-395-5614    +49 83 31 9 25 98 0  
 715-395-3405



**Serial Number Location**  
 Facing the left side of shear,  
 lower right corner.

## GENERAL ARRANGEMENT

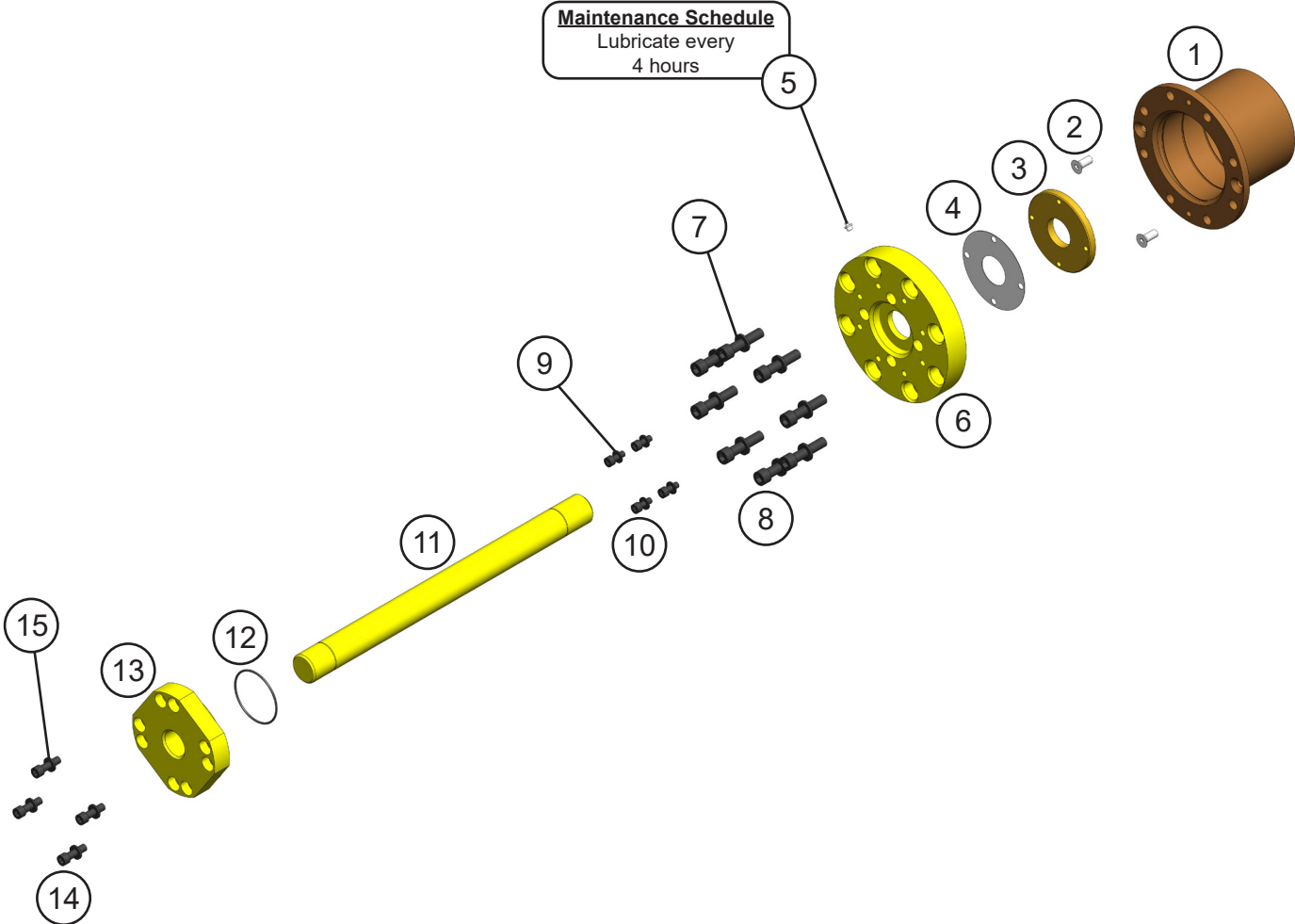
ITEM	QTY	PART NUMBER	DESCRIPTION
1	1	*	Wtmg Stick
2	1	*	Wtmg Upper
3		*	Wtmg Lug Upper Head
4		See page 6	Assembly Pivot Group - Right Side
5		See page 8	Assembly Pivot Group - Left Side
6		See page 10	Assembly Lower Blades
7		See page 12	Assembly Upper Blades
8		See page 14	Assembly Auto Guide
9		See page 16	Assembly Cylinder Pins
10		See page 18	Assembly Access Covers
11		See page 20	Assembly Upper Head
12		See page 22	Assembly Rotation
13		See page 24	Assembly Rotation Circuit - 2 <sup>nd</sup> Member
		See page 26	Assembly Rotation Circuit - 3 <sup>rd</sup> Member
14		See page 28	Sub-Assembly Rotate Cross-over / C'bal
15		See page 30	Sub-Assembly Line Mount Manifold
16		See page 32	Assembly Open and Close Circuit
17		See page 34	Assembly Swivel Manifold
18		See page 36	Sub-Assembly Regen Block
19		See page 38	Assembly Slewing Ring Lubrication

\* Part numbers are Serial Number specific. For replacement parts call the Genesis Parts Department.

**USA**  
715-395-3488

**Europe**  
+49 83 31 9 25 98 0

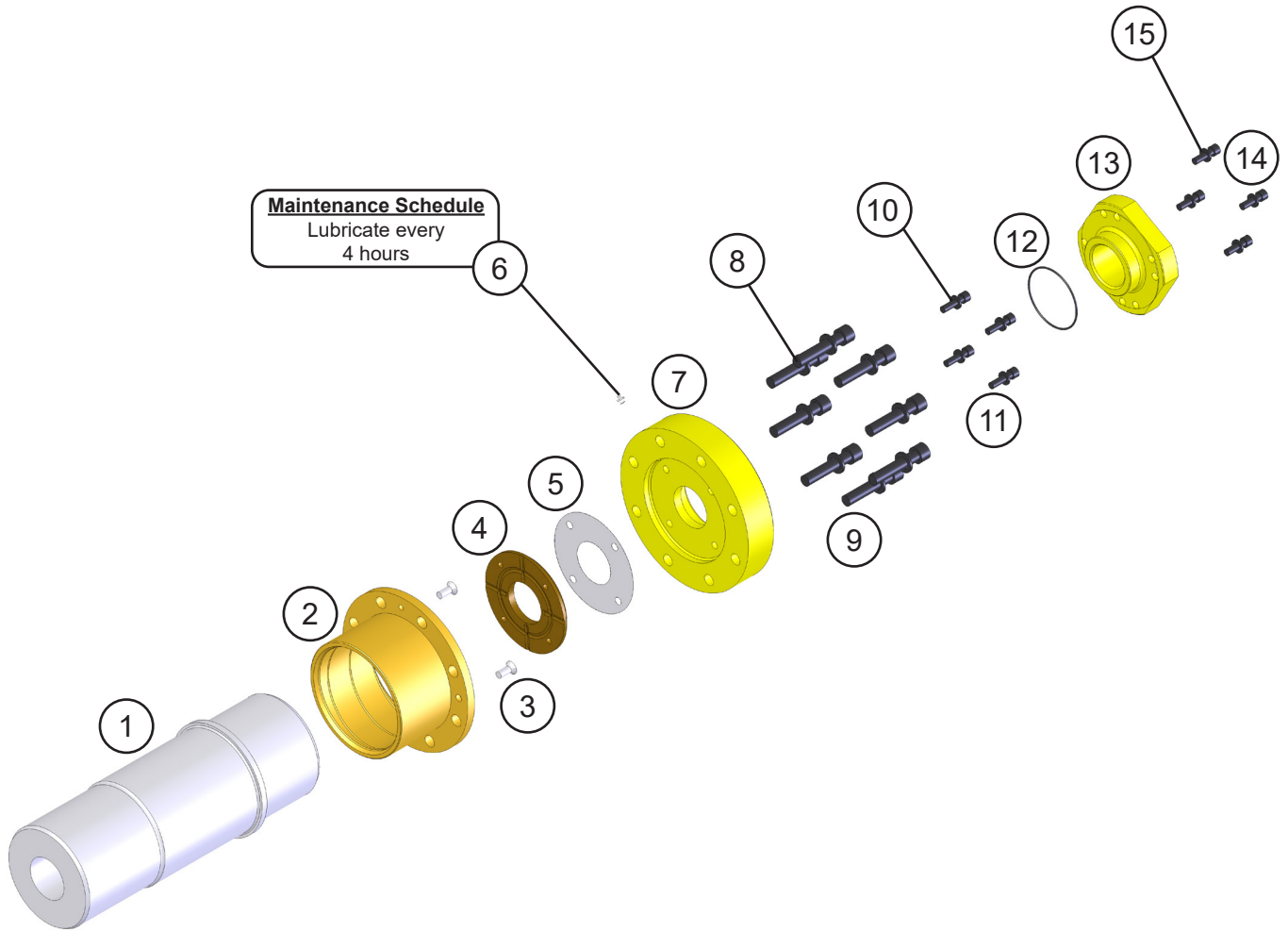
# ASSEMBLY PIVOT GROUP - RIGHT SIDE



## ASSEMBLY PIVOT GROUP - RIGHT SIDE

ITEM	QTY	PART NUMBER	DESCRIPTION
1	1	1106874	Mach Bearing RH
2	2	F0412030	Flat Head Capscrew M12 x 1.75 x 30
3	1	1106886	Mach Thrust Washer
4	1	1106882	Shim Set Thrust Washer
5	1	6200002	Grease Fitting
6	1	1106883	Mach End Cap
7	8	F1201630	Flat Washer M16
8	8	F0616060	Socket Head Capscrew M16 x 2 x 60
9	4	F1201021	Flat Washer M10
10	4	F0610025	Socket Head Capscrew M10 x 1.50 x 25
11	1	1106885	Mach Tie Rod
12	1	S0190238	O-Ring
13	1	1106542	Mach Tie Rod Nut
14	4	F0612040	Socket Head Capscew M12 x 1.75 x 40
15	4	F1201224	Flat Washer M12

# ASSEMBLY PIVOT GROUP - LEFT SIDE





## ASSEMBLY PIVOT GROUP - LEFT SIDE

ITEM	QTY	PART NUMBER	DESCRIPTION
1	1	*	Mach Main Shaft
2	1	1106875	Mach Bearing LH
3	2	F0412030	Flat Head Capscrew M12 x 1.75 x 30
4	1	1106886	Mach Thrust Washer
5	1	1106882	Shim Set Thrust Washer
6	1	6200002	Grease Fitting
7	1	1106883	Mach End Cap
8	8	F1201630	Flat Washer M16
9	8	F0616060	Socket Head Capscrew M16 x 2 x 60
10	4	F1201021	Flat Washer M10
11	4	F0610025	Socket Head Capscrew M10 x 1.50 x 25
12	1	S0190238	O-Ring
13	1	1106542	Mach Tie Rod Nut
14	4	F0612040	Socket Head Capscrew M12 x 1.75 x 40
15	4	F1201224	Flat Washer M12

\* Part number is Serial Number specific. For replacement parts call the Genesis Parts Department.

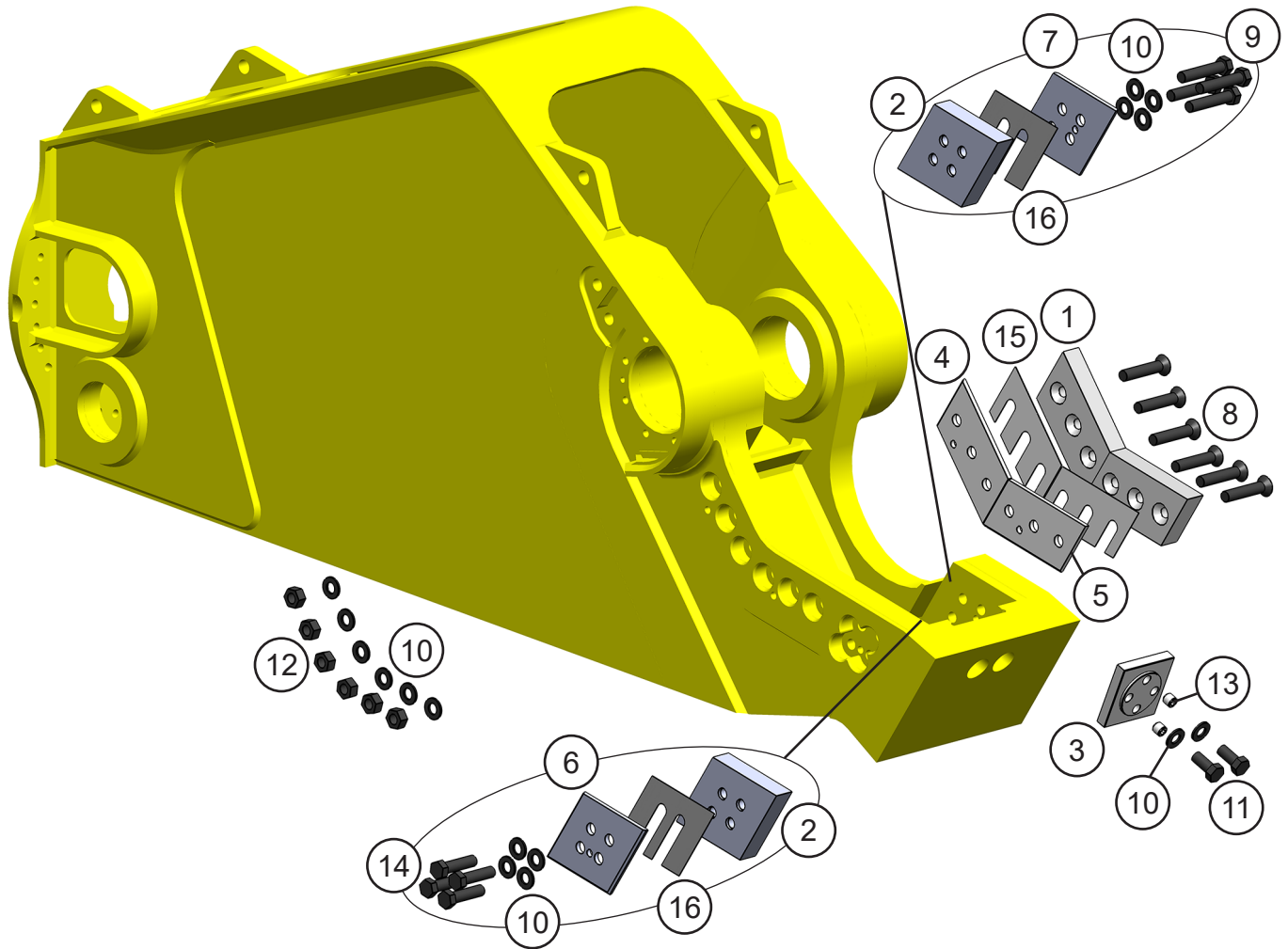
**USA**

715-395-3488

**Europe**

+49 83 31 9 25 98 0

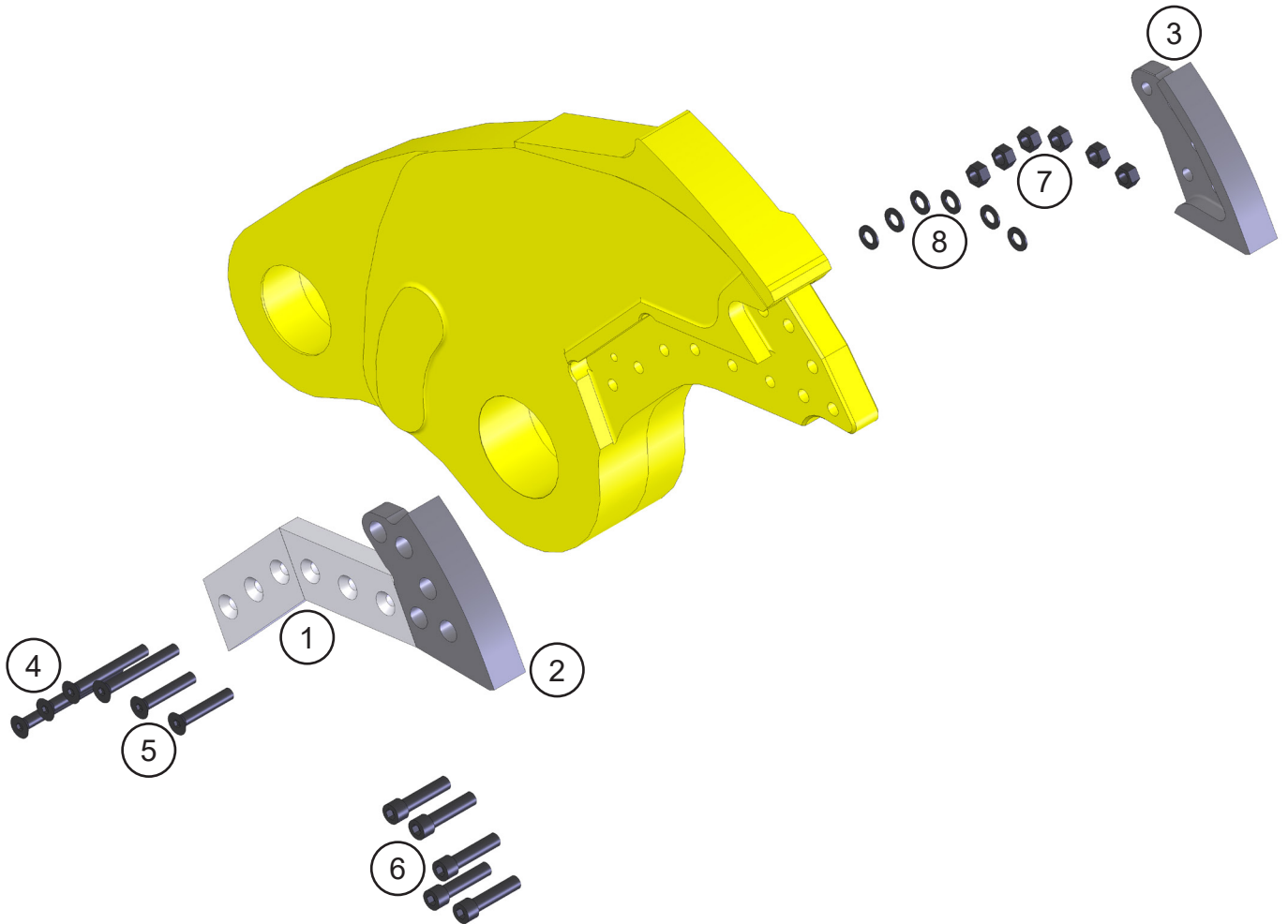
# ASSEMBLY LOWER BLADES



## ASSEMBLY LOWER BLADES

ITEM	QTY	PART NUMBER	DESCRIPTION
1	2	1106876	Mach Blade
2	2	1105941	Mach Blade Guide
3	1	1101955	Mach Blade Razor
4	1	1106877	Mach Adjustment Plate Primary
5	1	1106879	Mach Adjustment Plate Secondary
6	1	1106413	Mach Guide Blade Adjustment Plate
7	1	1106414	Mach Guide Blade Adjustment Plate
8	6	F0588450	Flat Head Capscrew $\frac{7}{8}$ - 9 x $4\frac{1}{2}$
9	4	F0288450	Hex Head Capscrew $\frac{7}{8}$ - 9 x $4\frac{1}{2}$
10	16	F1300088	Flat Washer Narrow $\frac{7}{8}$
11	2	F0288200	Hex Head Capscrew $\frac{7}{8}$ - 9 x 2
12	6	F0908809	Hex Nut $\frac{7}{8}$ - 9
13	2	F2588088	Set Screw Socket Head $\frac{7}{8}$ - 9 x $\frac{7}{8}$
14	4	F0288350	Hex Head Capscrew $\frac{7}{8}$ - 9 x $3\frac{1}{2}$
15		1105397	Shim Set, Blade
16		1106477	Shim Set, Guide Blade

# ASSEMBLY UPPER BLADES

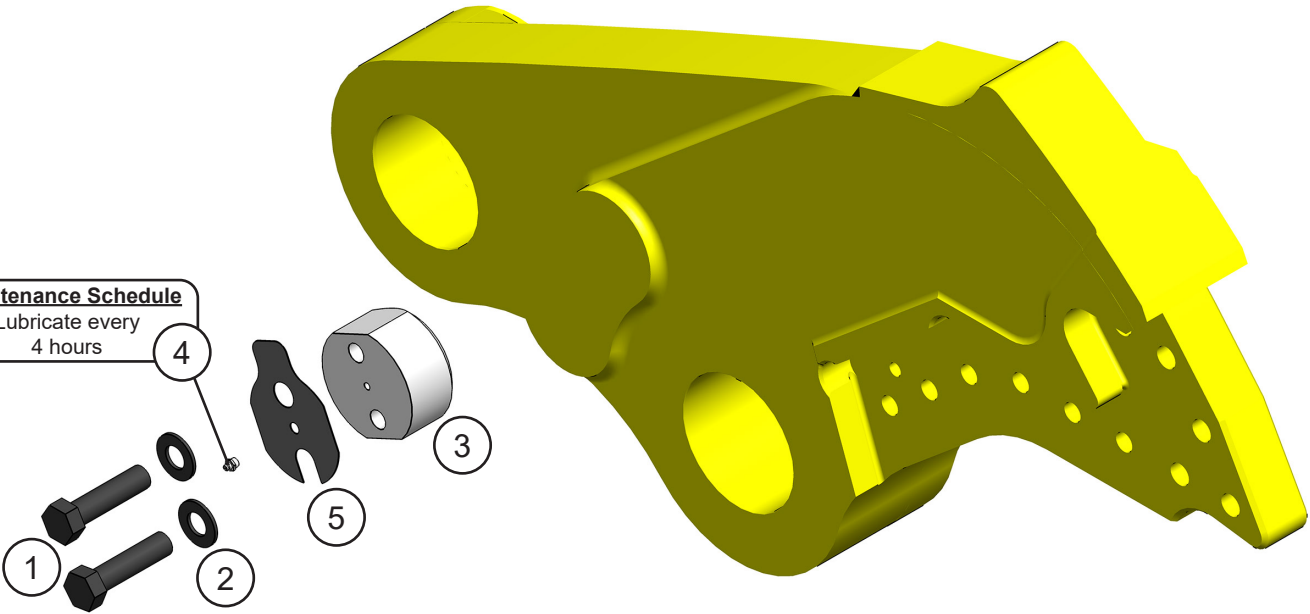


## ASSEMBLY UPPER BLADES

ITEM	QTY	PART NUMBER	DESCRIPTION
1	2	1106876	Mach Blade
2	1	1105939	Mach Blade Tip Right
3	1	1105940	Mach Blade Tip Left
4	4	F0588600	Flat Head Capscrew $\frac{7}{8}$ - 9 x 6
5	2	F0588500	Flat Head Capscrew $\frac{7}{8}$ - 9 x 5
6	5	1103609	Mach Bolt Socket Head Capscrew 1 - 8 x $4\frac{1}{4}$
7	6	F0908809	Hex Nut $\frac{7}{8}$ - 9
8	6	F1300088	Flat Washer Narrow $\frac{7}{8}$

# ASSEMBLY AUTO GUIDE

**Maintenance Schedule**  
Lubricate every  
4 hours



## ASSEMBLY AUTO GUIDE

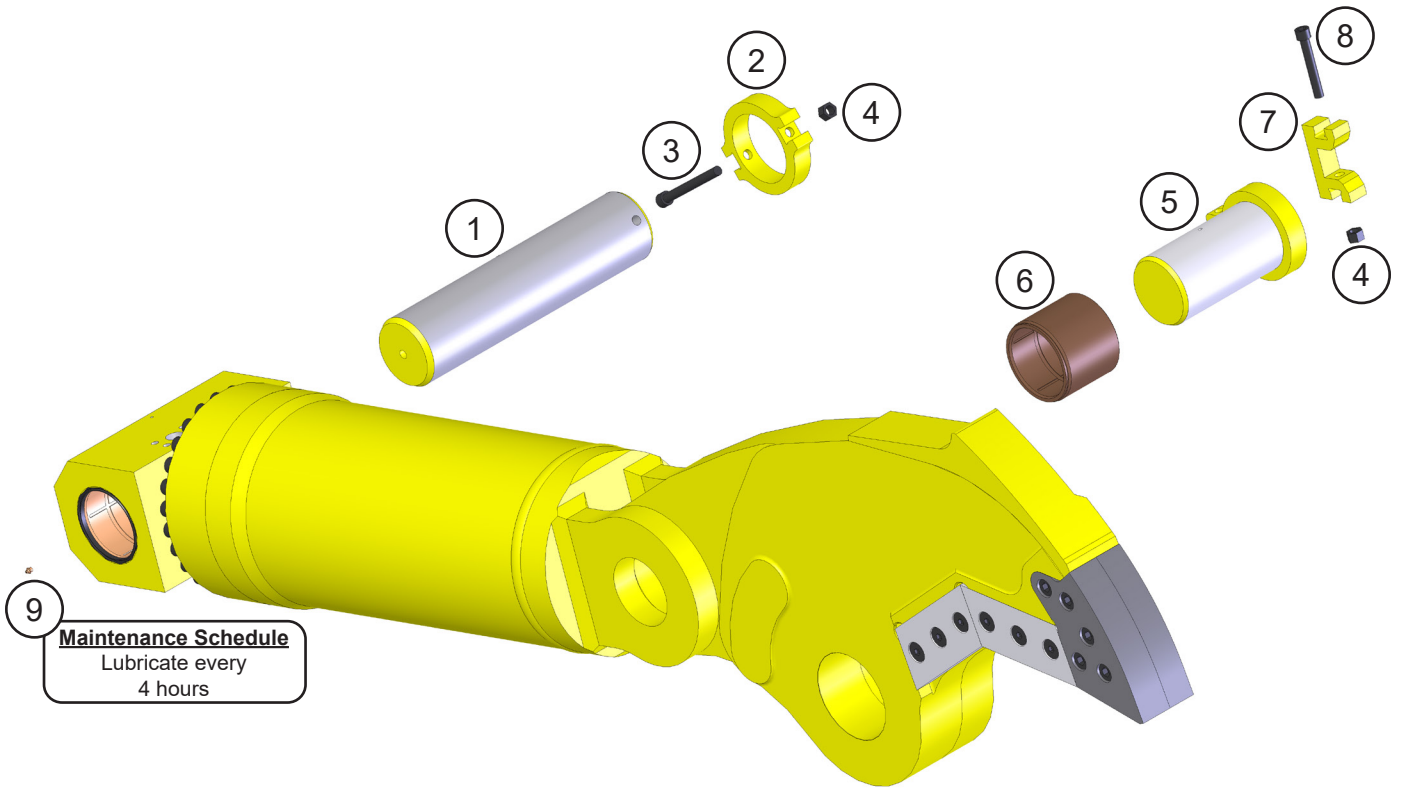
ITEM	QTY	PART NUMBER	DESCRIPTION
1	2	F0210400	Hex Head Capscrew 1 - 8 x 4
2	2	F1300100	Flat Washer Narrow 1"
3	1	*	Mach Auto Guide
4	1	6200002	Grease Fitting
5		1106478	Shim Set, Auto Guide

\* Part number is Serial Number specific. For replacement parts call the Genesis Parts Department.

**USA**  
715-395-3488

**Europe**  
+49 83 31 9 25 98 0

# ASSEMBLY CYLINDER PINS



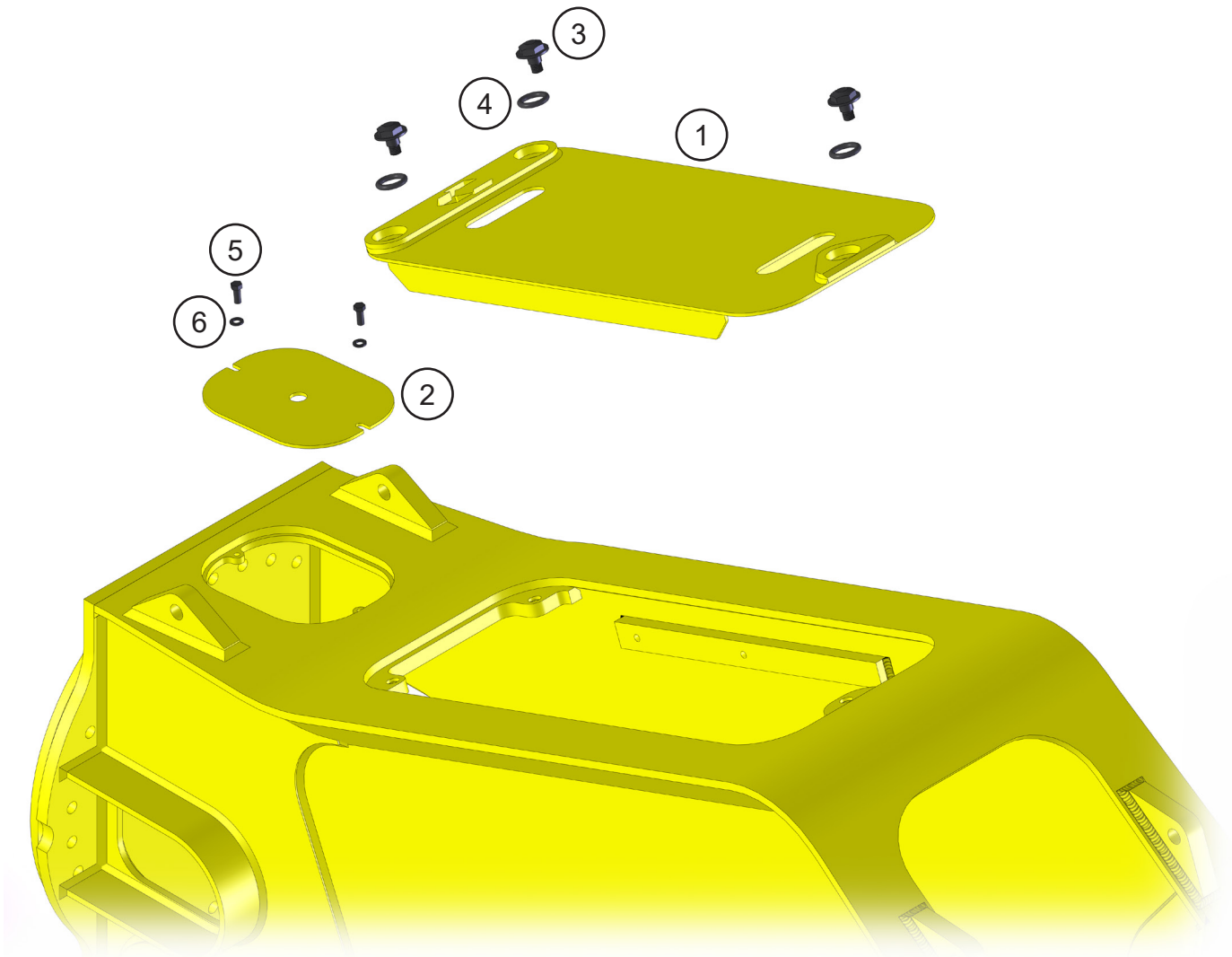
**Maintenance Schedule**  
Lubricate every  
4 hours



## ASSEMBLY CYLINDER PINS

ITEM	QTY	PART NUMBER	DESCRIPTION
1	1	1106889	Mach Rear Cyl Pin
2	1	1103607	Mach Pin Keeper Rear
3	1	F0620180	Socket Head Capscrew M20 x 2.50 x 180
4	2	F1020250	Nylock Hex Nut M20 x 2.50
5	1	1106888	Wldt Front Cyl Pin
6	1	3100133	Mach Bearing Upper Cylinder Connection
7	1	3500350	Mach Pin Keeper (Clevis)
8	1	F0620100	Socket Head Capscrew M20 x 2.50 x 100
9	1	6200002	Grease Fitting

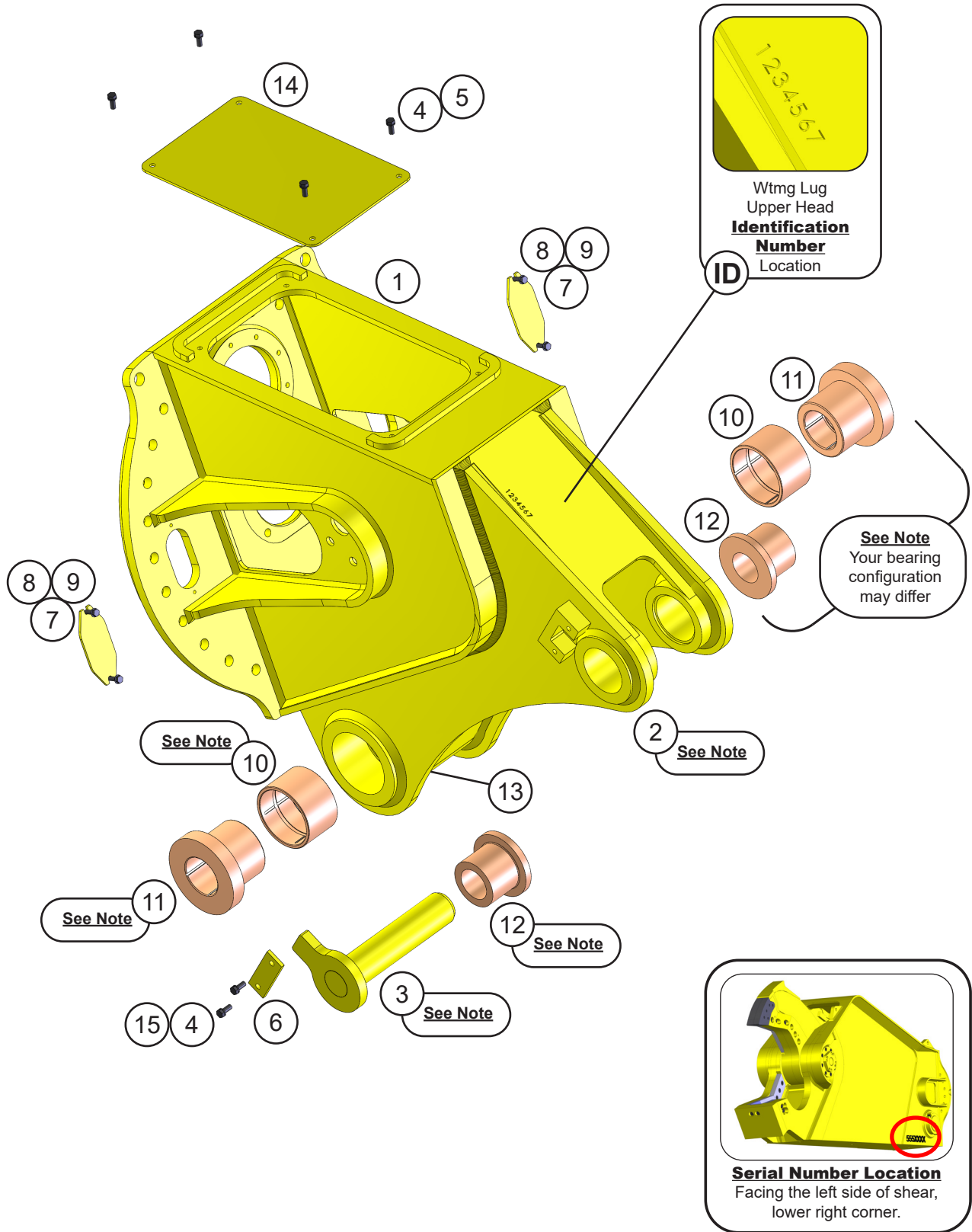
# ASSEMBLY ACCESS COVERS



## ASSEMBLY ACCESS COVERS

ITEM	QTY	PART NUMBER	DESCRIPTION
1	1	1107582	Wldt Cover
2	1	1107838	Plt Rear Cover
3	3	1105854	Mach Flange Shoulder Bolt
4	3	6301112	O-Ring
5	2	F0112020	Hex Head Capscrew M12 x 1.75 x 20
6	2	F1201224	Flat Washer M12

# ASSEMBLY UPPER HEAD



## ASSEMBLY UPPER HEAD

ITEM	QTY	PART NUMBER	DESCRIPTION
1	1	5513377	Wtmg Sub Head
2	1	*	Wtmg Lug Upper Head
3	1	*	Wldt Pin
4	6	F0112030	Hex Head Capscrew M12 x 1.75 x 30
5	4	F1201224	Flat Washer M12
6	1	5500752	Plt Strap
7	2	1105883	Plt Bolt Cover
8	4	F0110030	Hex Head Capscrew M10 x 1.50 x 30
9	4	F1201021	Flat Washer M10
10	2	*	Mach Bearing
11	2	*	Mach Boom Bearing
12	2	*	Mach Spacer Sleeve
13	1	6200002	Grease Fitting
14	1	*	Wtmg Sub Head Cover
15	2	F1401200	Lock Washer M12

\* Part numbers are Serial Number specific. For replacement parts call the Genesis Parts Department.

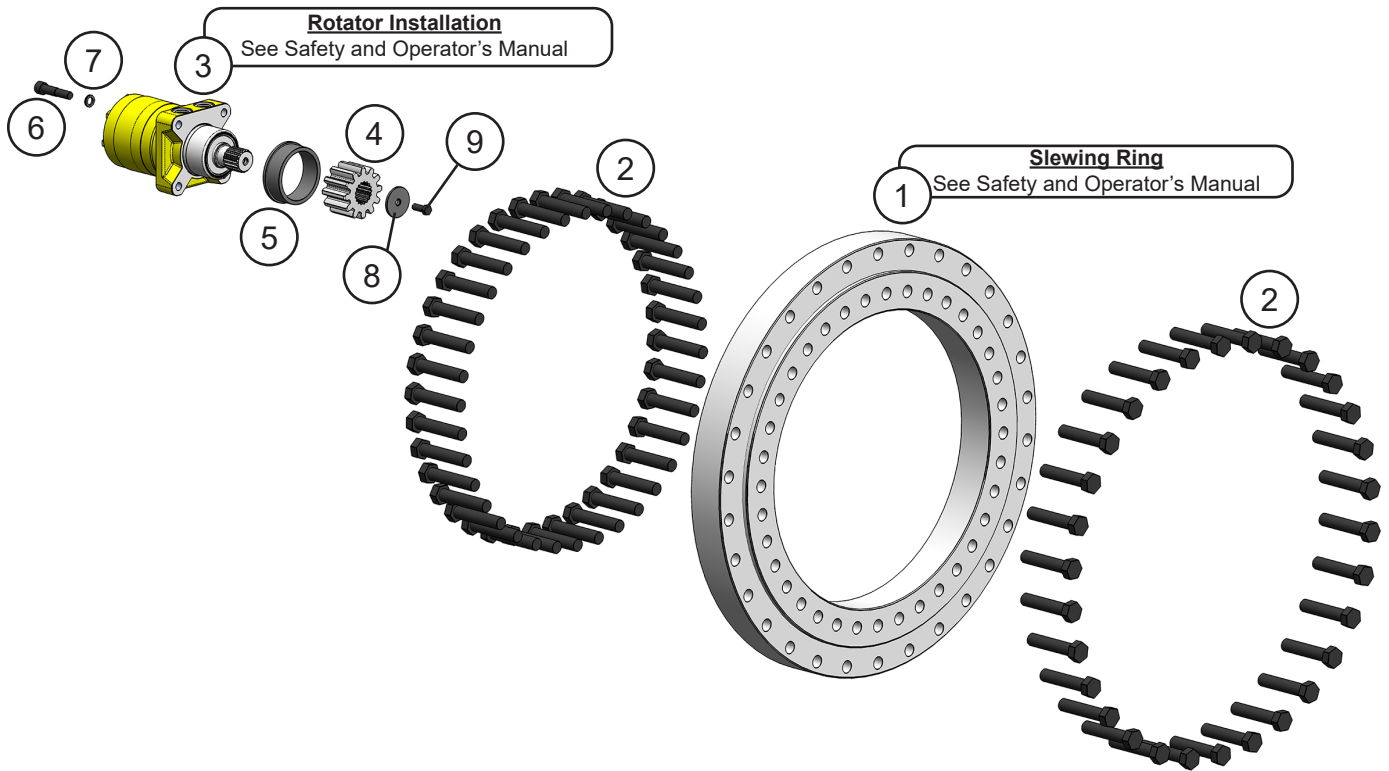
**USA**

715-395-3488

**Europe**

+49 83 31 9 25 98 0

# ASSEMBLY ROTATION



## ASSEMBLY ROTATION

ITEM	QTY	PART NUMBER	DESCRIPTION
1	1	6100092	Bearing Slewing
2	66	F0120100	Hex Head Capscrew M20 x 2.5 x 100
3	1	*	Motor
4	1	*	Pinion
5	1	*	Mach Spacer
6	4	1108183	Socket Head Capscrew M12 x 1.75 x 70 (Custom Shaft)
7	4	F1900050	Wedge Lock Washer ½
8	1	*	Mach Washer
9	1	*	Hex Head Capscrew

\* Part numbers are Serial Number specific. For replacement parts call the Genesis Parts Department.

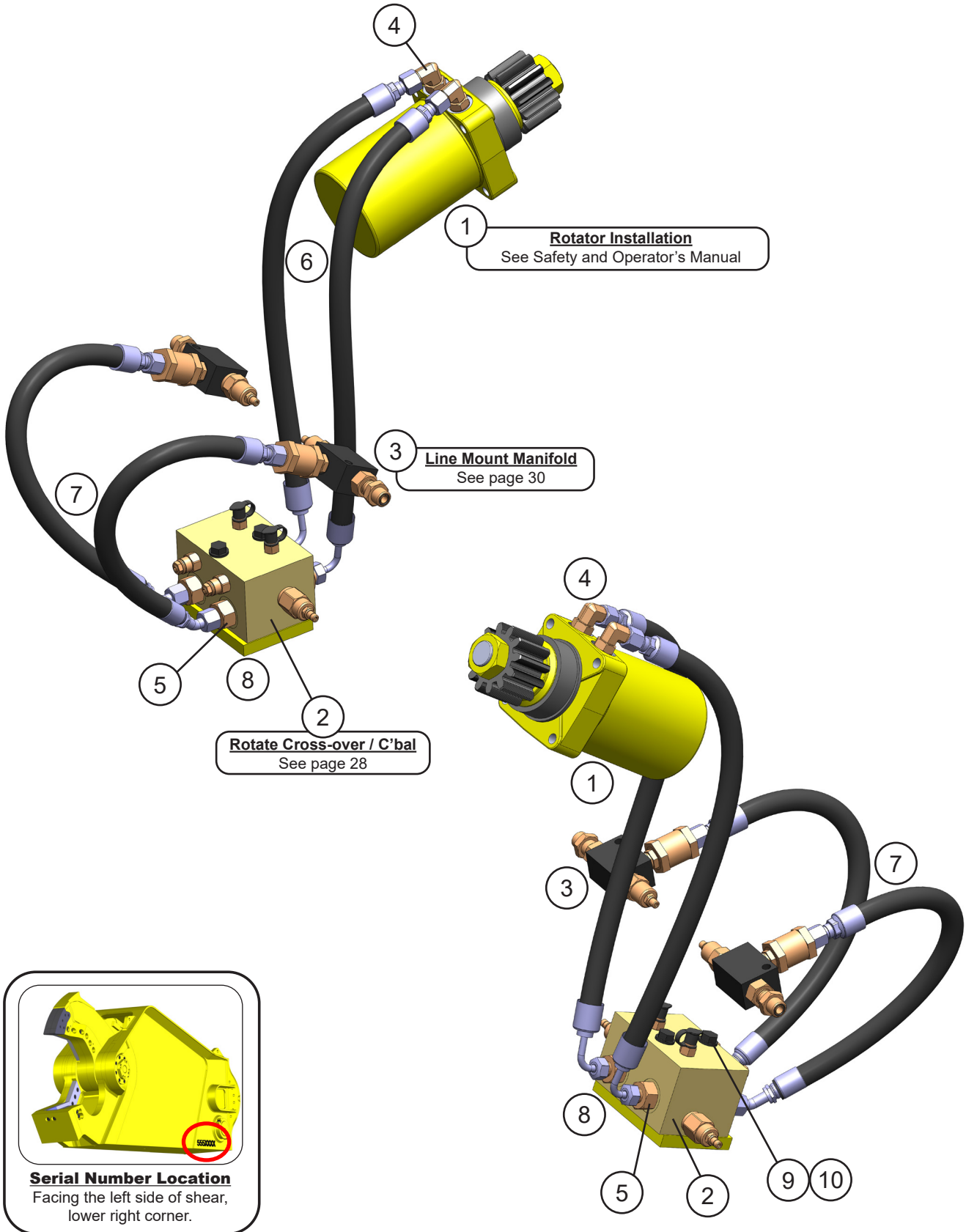
**USA**

715-395-3488

**Europe**

+49 83 31 9 25 98 0

# ASSEMBLY ROTATION CIRCUIT - 2ND MEMBER



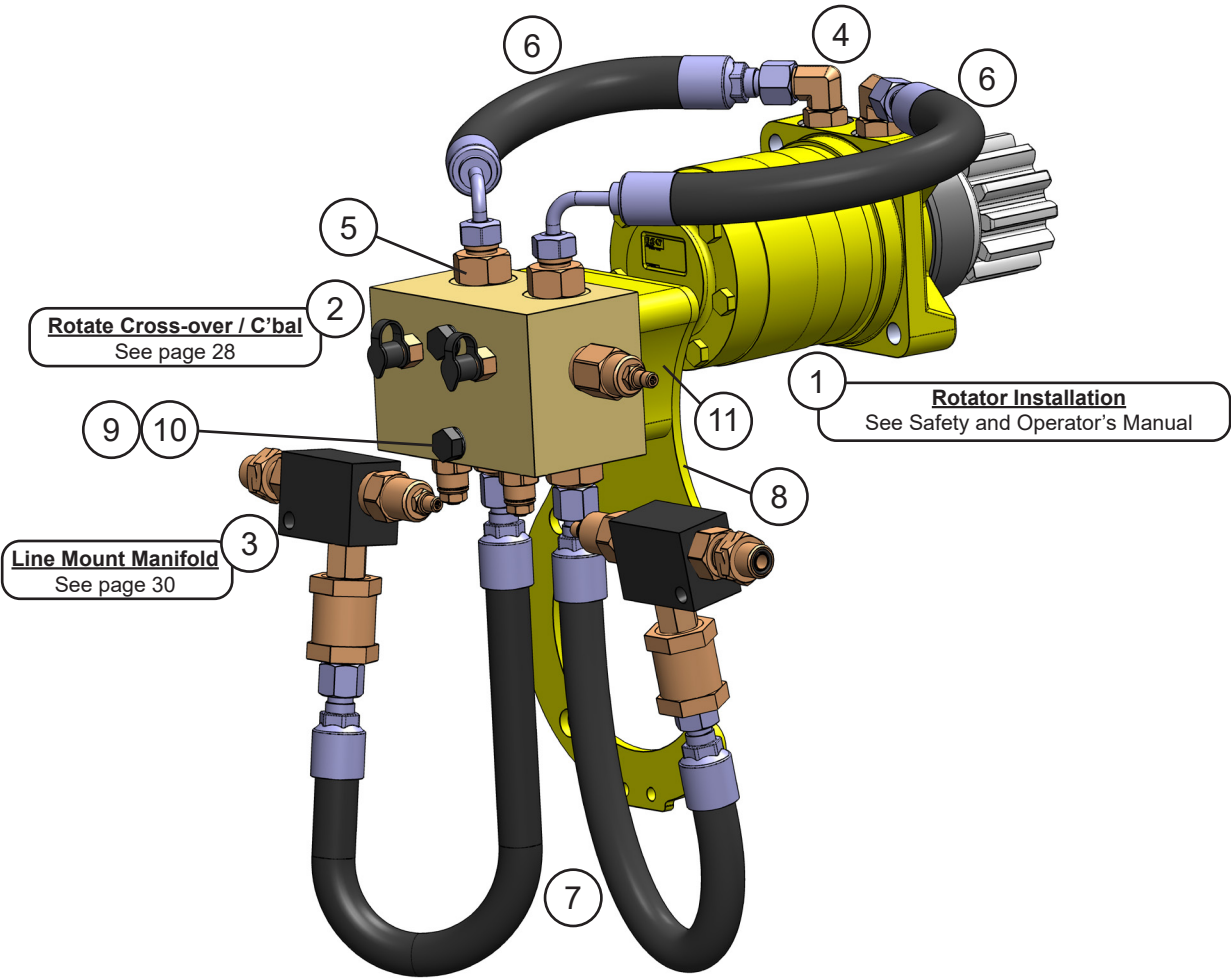


## ASSEMBLY ROTATION CIRCUIT - 2ND MEMBER

ITEM	QTY	PART NUMBER	DESCRIPTION
1	1	See page 22	Assembly Rotation
2	1	See page 28	Sub-Assembly Rotate Cross-over / C'bal
3	2	See page 30	Sub-Assembly Line Mount Manifold
4	2	6300305	Adaptor 10MB-08MFFOR-90
5	4	6300052	Adaptor 12MB-08MO
6	2	1106929	Hose
7	2	1106928	Hose
8	1	1104709	Mach Plt Valve Mount
9	2	F0112100	Hex Head Capscrew M12 x 1.75 x 100
10	2	F1201224	Flat Washer M12

If there are three O-ring face seal bulkheads on your sub-head, a case drain line is required.  
 If you are unsure if your attachment requires a case drain, contact the Genesis Service Department,  
 715-395-5252.

# ASSEMBLY ROTATION CIRCUIT - 3RD MEMBER

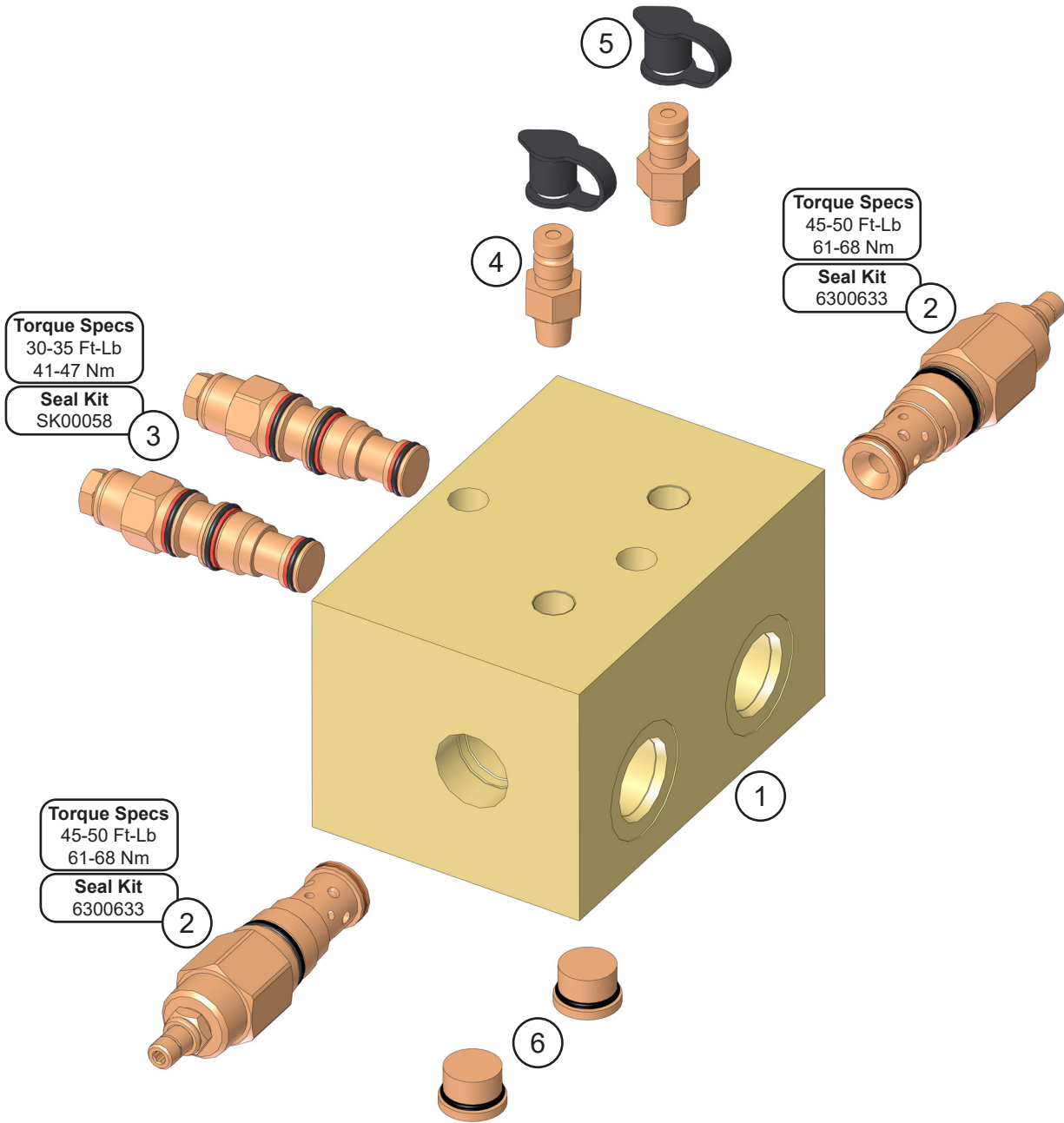


## ASSEMBLY ROTATION CIRCUIT - 3RD MEMBER

ITEM	QTY	PART NUMBER	DESCRIPTION
1	1	See page 22	Assembly Rotation
2	1	See page 28	Sub-Assembly Rotate Cross-over / C'bal
3	2	See page 30	Sub-Assembly Line Mount Manifold
4	2	6300305	Adaptor 10MB-08MFFOR-90
5	4	6300052	Adaptor 12MB-08MO
6	2	1105551	Hose
7	2	1106466	Hose
8	1	3503361	Mach Bracket
9	2	F0112140	Hex Head Capscrew M12 x 1.75 x 140
10	2	F1201224	Flat Washer M12
11	1	3501912	Mach Spacer

If there are three O-ring face seal bulkheads on your sub-head, a case drain line is required.  
 If you are unsure if your attachment requires a case drain, contact the Genesis Service Department,  
 715-395-5252.

# SUB-ASSEMBLY ROTATE CROSS-OVER / C'BAL



## SUB-ASSEMBLY ROTATE CROSS-OVER / C'BAL

ITEM	QTY	PART NUMBER	DESCRIPTION
1	1	6360010	Valve Block
2	2	*	Valve Relief <span style="float: right;"><b>Seal Kit 6300633</b></span>
3	2	6380035	Valve Counterbalance <span style="float: right;"><b>Seal Kit SK00058</b></span>
4	2	6300088	Diagnostic Nipple 04MP
5	2	6310001	Diagnostic Nipple Dust Cap
6	2	6300054	Plug Socket Head 08MB

\* Part number is Serial Number specific. For replacement parts call the Genesis Parts Department.

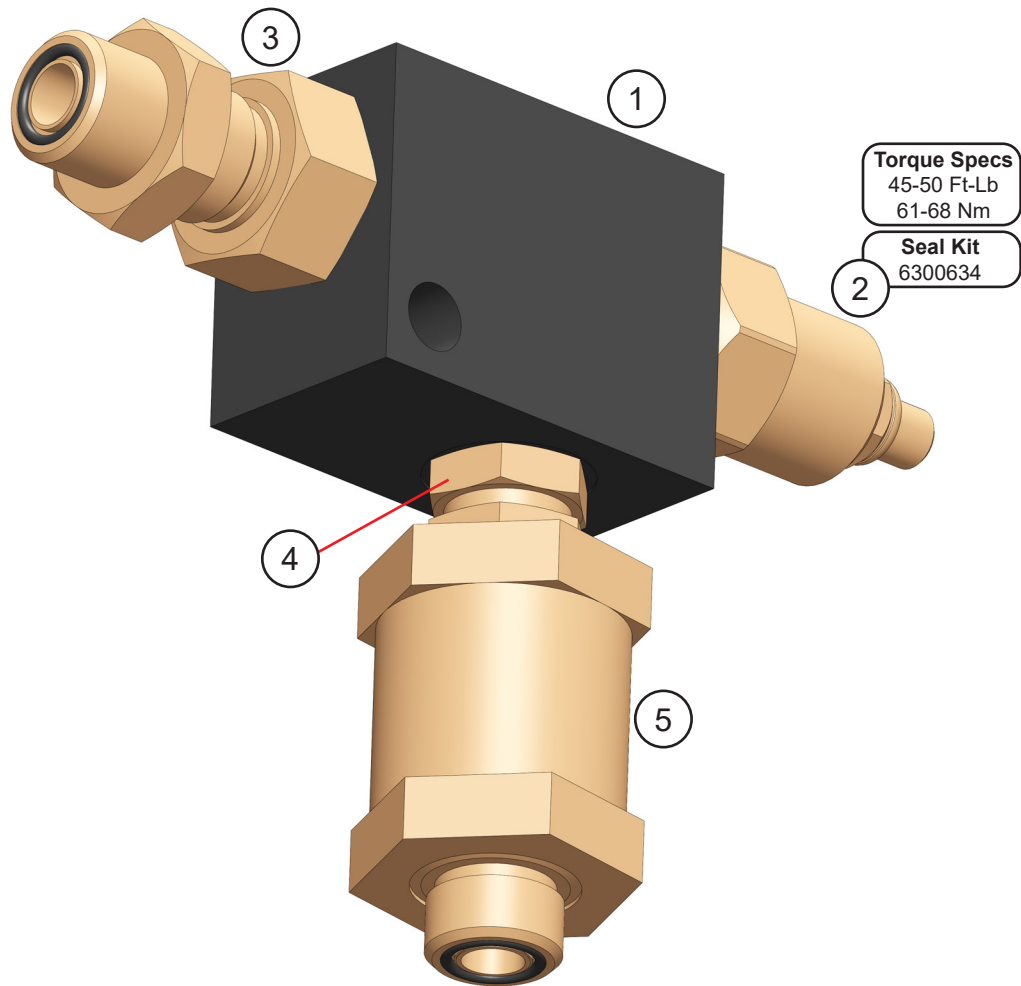
**USA**

715-395-3488

**Europe**

+49 83 31 9 25 98 0

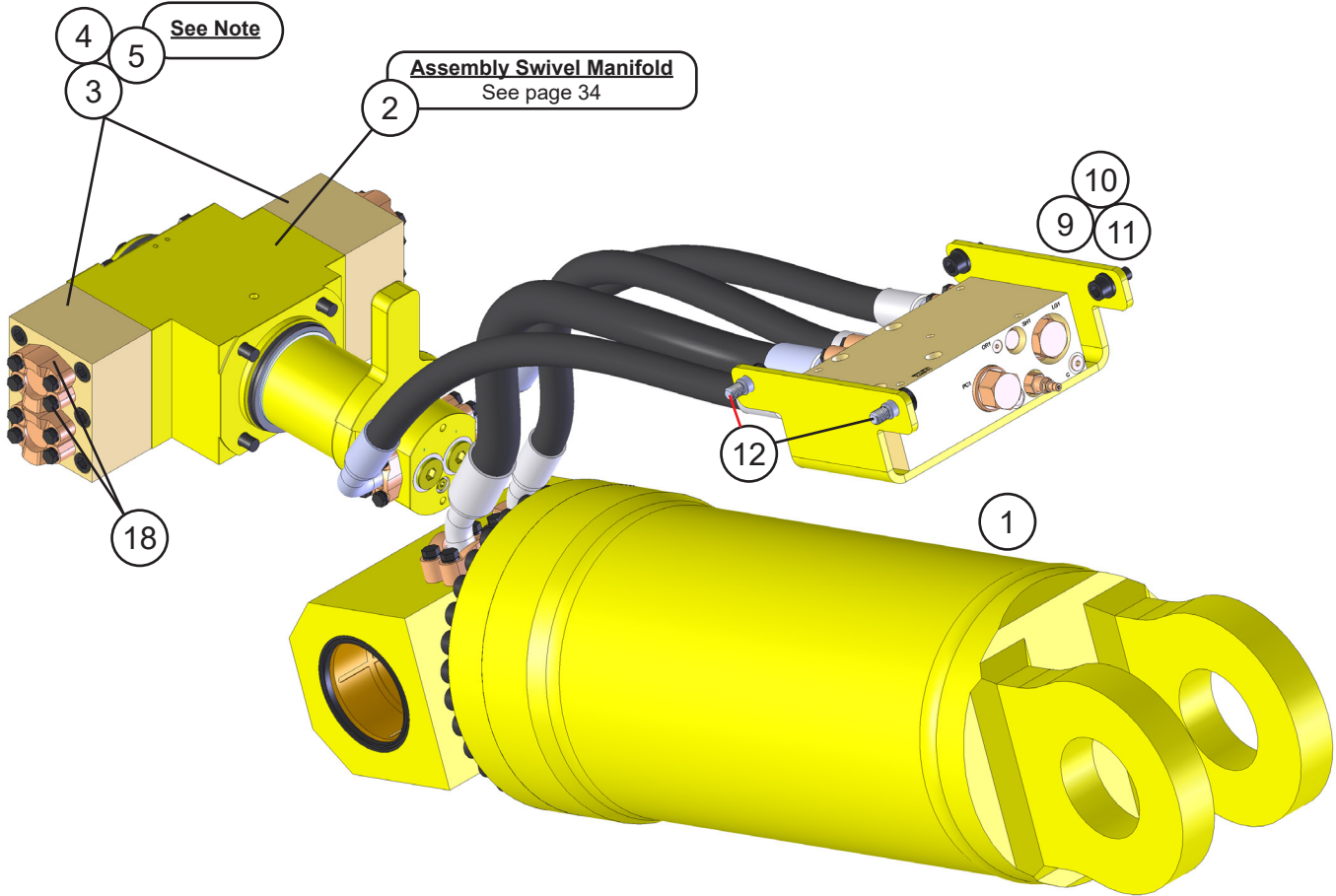
# SUB-ASSEMBLY LINE MOUNT MANIFOLD



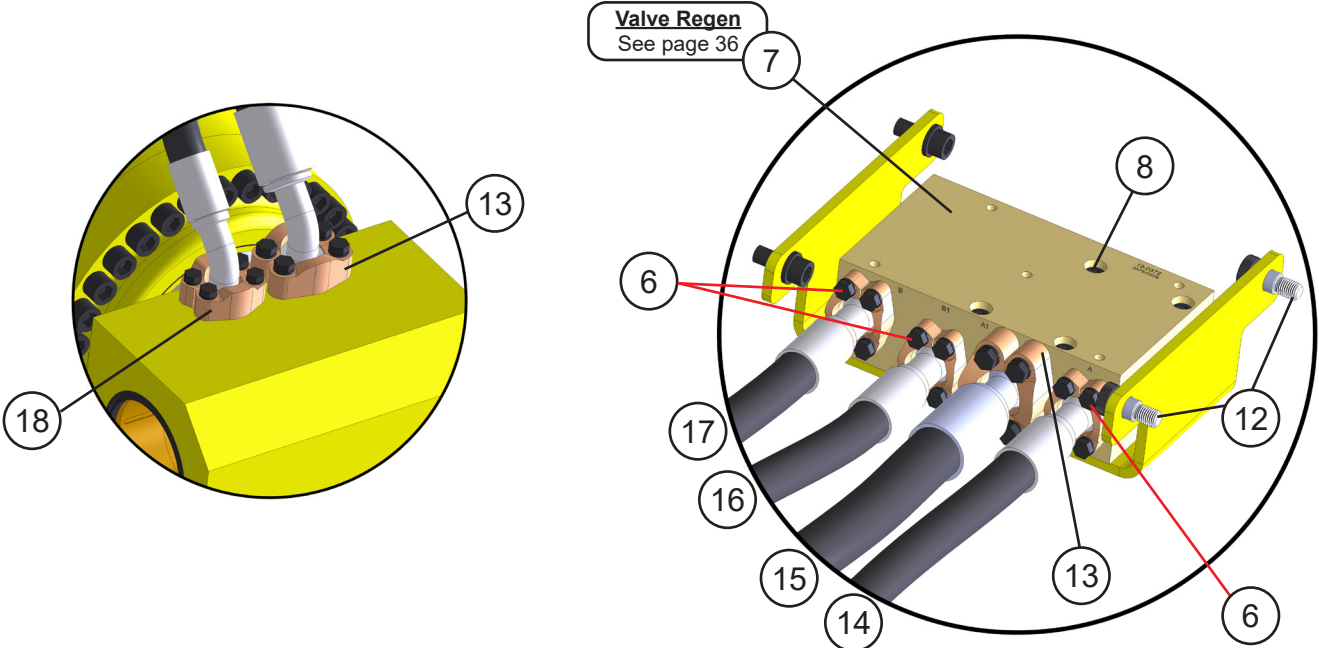
## SUB-ASSEMBLY LINE MOUNT MANIFOLD

ITEM	QTY	PART NUMBER	DESCRIPTION
1	1	6300609	Valve Line Body
2	1	6300361	Valve Flow Control   <b>Seal Kit 6300634</b>
3	1	6300497	Adaptor Bulkhead 08MB-08MO
4	1	6310183	Adaptor 08MB-08MB
5	1	6300364	Filter

# ASSEMBLY OPEN AND CLOSE CIRCUIT



**Valve Regen**  
See page 36



Note: Item 12 is tied together with 0.032" lock wire.



## ASSEMBLY OPEN AND CLOSE CIRCUIT

ITEM	QTY	PART NUMBER	DESCRIPTION
1	1	*	Assembly Cylinder B12.0 R8.0 S22.00
2	1	See page 34	Assembly Swivel Manifold
3	2	*	Mach Port Block
4	12	*	Socket Head Capscrew
5	4	*	O-Ring
6	5	<b>1" Split Flange Kit - Code 61</b>	
	2	H0261100	Split Flange Half 1.00 Code 61
	4	F0110035	Hex Head Capscrew M10 x 1.50 x 35
	4	F1401000	Lock Washer M10
	1	S0190219	O-Ring
7	1	See page 36	Valve Regen
8	4	F0612090	Socket Head Capscrew M12 x 1.75 x 120
9	1	1106892	Mach Plt Frmd Valve Tray
10	2	F0616035	Socket Head Capscrew M16 x 2 x 35
11	2	F1201630	Flat Washer M16
12	2	F3616020	Socket Head Shoulder Screw M16 x 2 x 20
13	2	<b>1-1/4" Split Flange Kit - Code 62</b>	
	2	H0262125	Split Flange Half 1.25 Code 62
	4	F0112050	Hex Head Capscrew M12 x 1.75 x 50
	4	F1401200	Lock Washer M12
	1	S0190222	O-Ring
14	1	1106902	Hose
15	1	1106899	Hose
16	1	1106900	Hose
17	1	1106901	Hose
18	5	<b>1" Split Flange Kit - Code 62</b>	
	2	H0262100	Split Flange Half 1.00 Code 62
	4	F0110050	Hex Head Capscrew M10 x 1.50 x 50
	4	F1401000	Lock Washer M10
	1	S0190219	O-Ring

\* Part numbers are Serial Number specific. For replacement parts call the Genesis Parts Department. The cylinder Serial Number is required to order a cylinder seal kit.

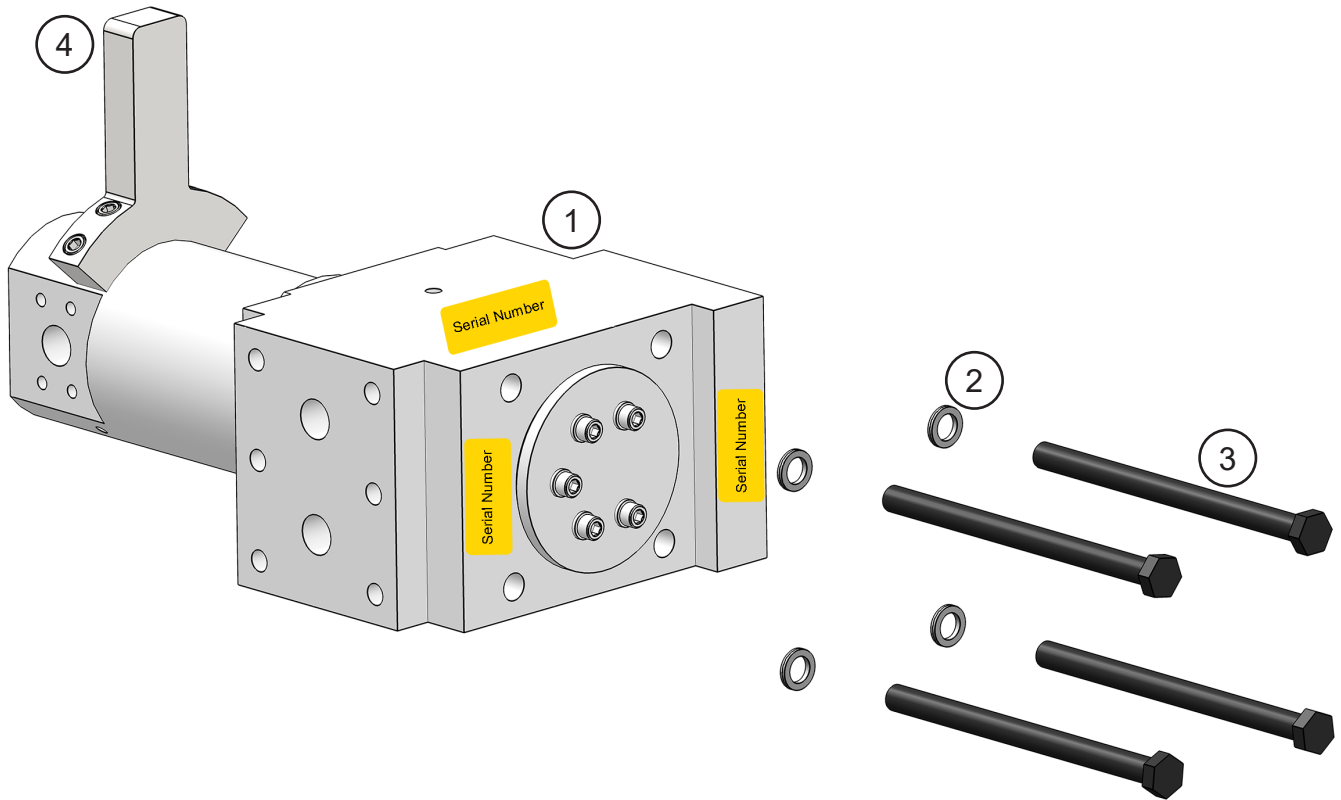
### USA

715-395-3488

### Europe

+49 83 31 9 25 98 0

# ASSEMBLY SWIVEL MANIFOLD



## ASSEMBLY SWIVEL MANIFOLD

ITEM	QTY	PART NUMBER	DESCRIPTION
1	1	*	Assembly Swivel Manifold
2	4	F1900063	Wedge Lock Washer 5/8
3	4	F0116230	Hex Head Capscrew M16 x 2.0 x 230
4	1	*	Torque Arm Kit

\* Part numbers are Serial Number specific.

For replacement parts and seal kit, call the Genesis Parts Department.

The swivel Serial Number, located in one of the three highlighted areas, is required for **any** parts order.

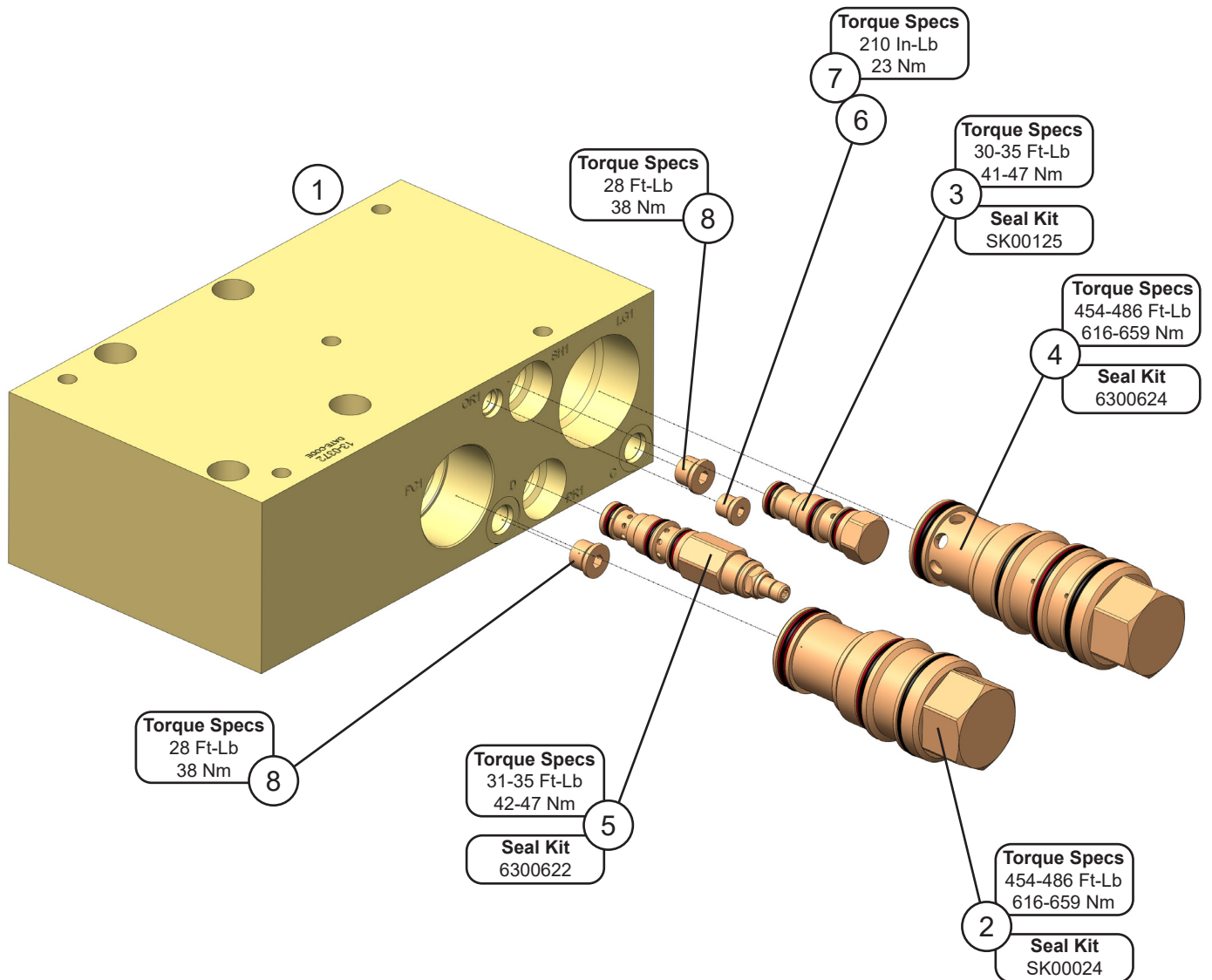
### USA

715-395-3488

### Europe

+49 83 31 9 25 98 0

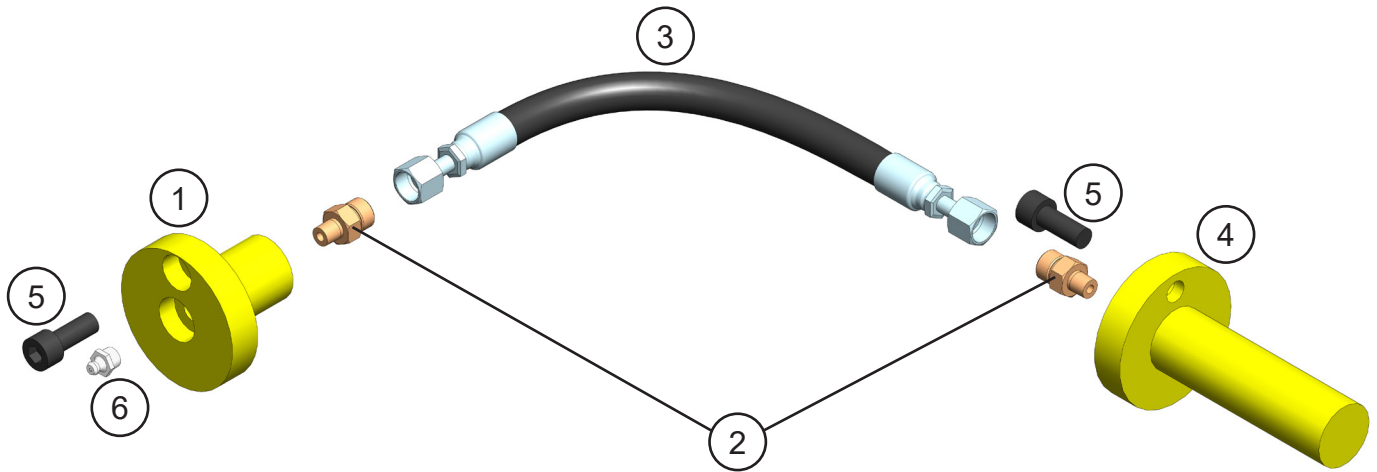
# REGEN BLOCK SUB-ASSEMBLY



## REGEN BLOCK SUB-ASSEMBLY

ITEM	QTY	PART NUMBER	DESCRIPTION	
1	1	6360022	Manifold Block	<b>Seal Kit SK00188</b>
2	1	6300061	Pilot to Close Check Valve	<b>Seal Kit SK00024</b>
3	1	6301200	Valve Shuttle	<b>Seal Kit SK00125</b>
4	1	6300623	Logic Element	<b>Seal Kit 6300624</b>
5	1	6300625	Pressure Reducing Valve	<b>Seal Kit 6300622</b>
6	1	6300903	Plug Pipe Orifice 01MP 1/16-27 NPT	
7	1	6300076	Plug Socket Head 04MB	
8	2	6300078	Plug Socket Head 06MB	

# ASSEMBLY SLEWING RING LUBRICATION



## ASSEMBLY SLEWING RING LUBRICATION

ITEM	QTY	PART NUMBER	DESCRIPTION
1	1	5512411	Mach Grease Bulkhead Adaptor
2	2	6300731	Adaptor 02MP-04MO
3	1	1105888	Hose
4	1	5512419	Mach Slewing Ring Grease Adaptor
5	2	F0610025	Socket Head Capscrew M10 x 1.50 x 25
6	1	6200002	Grease Fitting

## BOLT TORQUE SPECIFICATIONS

Reference the product Thread Treatment Diagrams on page 41 to determine whether to use wet or dry torque values for specific bolts.

Reference Procedures on page 42 for threadlocker or anti-seize application and bolt and bolt hole cleaning.

Prior to torquing, clean all bolt holes, bolts and nuts to remove dirt, grease and oil, and identify bolt type.

Never re-torque bolts that use Loctite. If a bolt becomes loose or damaged after the initial use when Loctite was applied and the bolt was torqued, the bolt must be replaced.

Never break tightened bolts loose with a torque wrench. Doing so may break the torque wrench or take it out of calibration.

Torque wrenches should be calibrated on an annual basis.

When using a torque multiplier with a torque wrench, incorrect settings will be multiplied by the ratio of the torque wrench.

Never use an impact driver on a torque multiplier.

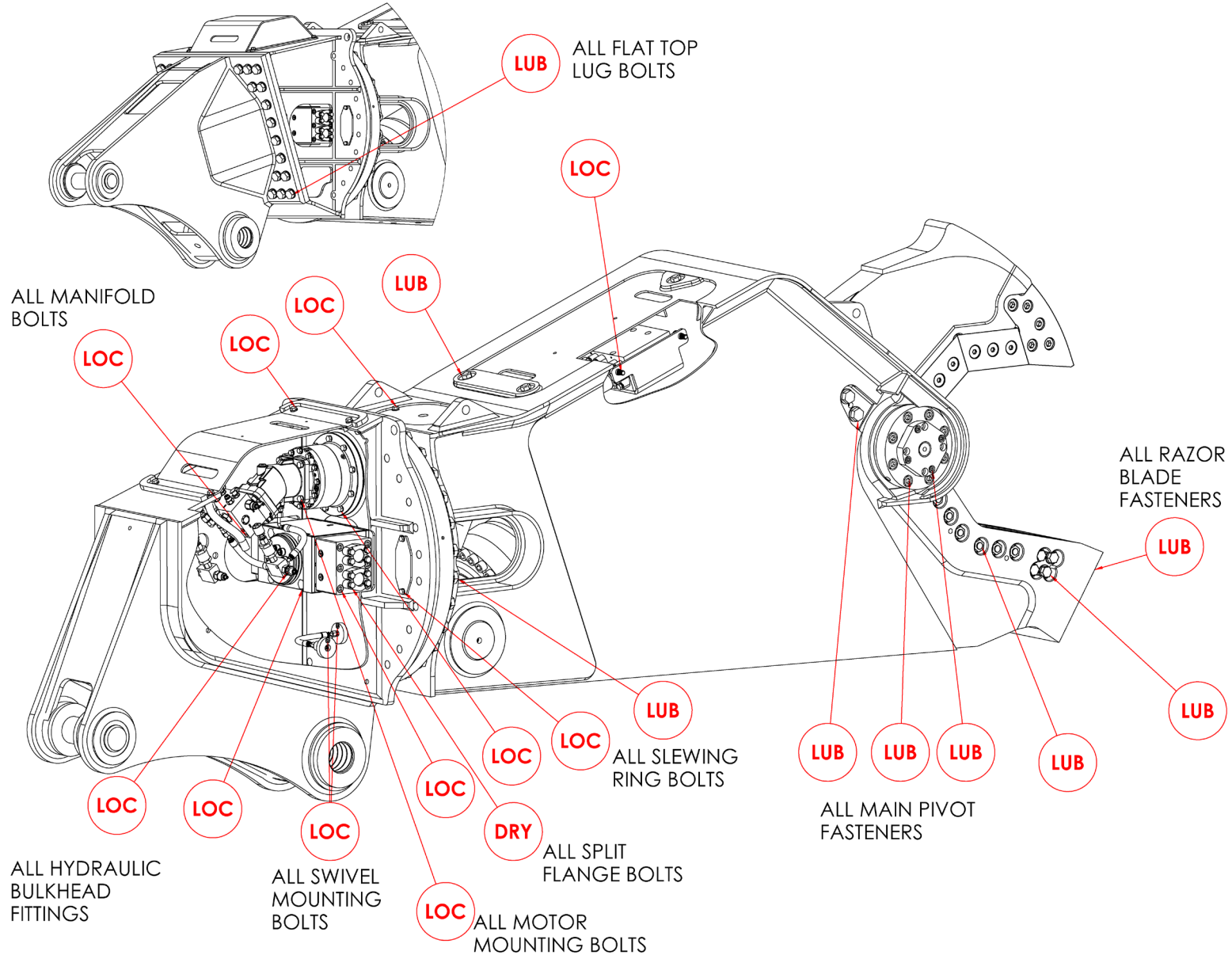


# THREAD TREATMENT DIAGRAM

## Mobile Shears

Use this diagram to determine what thread treatment, if any, is required for each fastener.

For thread treatment application procedures, see page 42. For prescribed torque values, see page 44.



# PROCEDURES

Reference the product Thread Treatment Diagrams on page 41 to determine which of the following procedures is required.

## Cleaning

To ensure proper performance of thread treatment and accurate torque values, clean and degrease **all internal and external threads** prior to application of threadlocker, anti-seize or primer and before installation of hardware.

- Ensure both internal and external threads are free of dirt or debris.
- Use brake cleaner or similar cleaning solvent on all threads to remove any grease or oil.
- Allow threads to dry.

## NOTICE

Failure to properly clean threads will cause threadlocker, primer, and/or anti-seize to not properly cure!

LOC

## Threadlocker

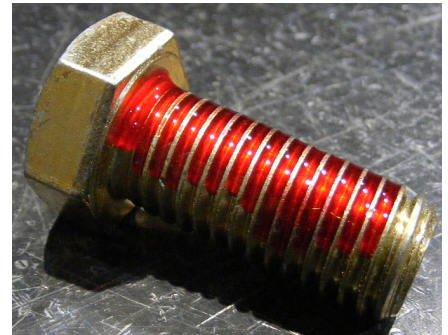
For bolted connections requiring threadlocker, use **Loctite 263** or equivalent applied using the following procedure:

- Clean and degrease all threads.
- For thru holes or nuts, apply threadlocker to bolt threads.
- For blind holes, apply stripe of threadlocker along the length of the hole (applying to the bolt can cause escaping air to remove threadlocker as the bolt is inserted).
- Torque bolt to specified **Wet Torque Value**, see page 44.

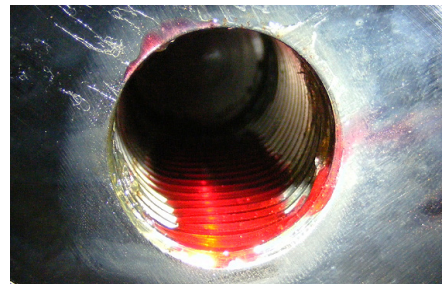
For threaded hydraulic fitting connections, use **Loctite 5452** or equivalent thread sealant in conjunction with **Loctite 7471** primer using the following procedure:

- Clean and degrease all threads.
- Apply Loctite 7471 primer to both external and internal threads and allow to dry.
- Apply threadlocker to 360 degrees of the threads on the male fitting, ensuring adequate coverage.
- Assemble fitting per directions in operator's manual.
- For O-ring boss and flat face O-ring connections, torque fittings to values specified on page 45.

Threadlocker



Blind Hole



Hydraulic Fitting



## PROCEDURES

LUB

### Anti-Seize

For bolted connections requiring anti-seize lubrication, use **Loctite LB8008** or equivalent using the following procedure:

- Clean and degrease all threads.
- Apply thin coat of anti-seize to internal and external threads and under bolt head and/or nut, ensuring complete coverage.
- Torque bolt to specified **Wet Torque Value**, see page 44.

Anti-Seize

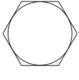
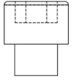
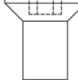


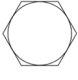
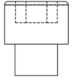
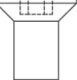
DRY

### No Thread Treatment

- Clean and degrease all threads.
- Torque bolt to specified **Dry Torque Value**, see page 44.

# BOLT TORQUE SPECIFICATIONS

<b>Dry Torque Values</b>						
		Hex/Socket Head		Flat Head		
						
Fastener Grade	Size x Pitch	Nm	Ft-lb	Nm	Ft-lb	
CL 10.9	M8 x 1.25	35	26	27	20	
	M10 x 1.50	71	53	58	42	
	M12 x 1.75	124	92	101	73	
	M14 x 1.50	200	148	163	118	
	M14 x 2.00	200	148	163	118	
	M16 x 2.00	311	230	254	184	
	M20 x 1.50	610	450	498	360	
	M20 x 2.50	608	449	497	359	
	M24 x 3.00	1054	778	861	622	
	M27 x 3.00	1543	1138	1260	910	
	M30 x 3.50	2095	1545	1712	1236	
	M36 x 4.00	3659	2699	2991	2159	
8	1/4-20	14	11	11	8	
	5/16-18	32	24	26	19	
	3/8-16	59	44	48	35	
	7/16-14	94	70	77	56	
	1/2-13	143	106	116	84	
	1/2-20	162	120	133	96	
	5/8-11	287	212	234	169	
	3/4-10	509	376	415	300	
	7/8-9	821	606	670	484	
	1.00-8	1232	909	1007	727	
	1.00-14	1383	1020	1130	816	
	1.25-7	2463	1817	2013	1453	
8/L9	1.50-6	4287	3162	3504	2529	

<b>Wet Torque Values</b>						
		Hex/Socket Head		Flat Head		
						
Fastener Grade	Size x Pitch	Nm	Ft-lb	Nm	Ft-lb	
CL 10.9	M8 x 1.25	29	22	23	17	
	M10 x 1.50	61	45	49	36	
	M12 x 1.75	105	78	85	62	
	M14 x 1.50	150	111	121	88	
	M14 x 2.00	170	126	138	100	
	M16 x 2.00	265	196	216	156	
	M20 x 1.50	456	337	372	269	
	M20 x 2.50	517	382	422	305	
	M24 x 3.00	894	660	731	528	
	M27 x 3.00	1312	968	1072	774	
	M30 x 3.50	1779	1312	1453	1049	
	M36 x 4.00	3110	2294	2542	1835	
8	1/4-20	13	10	11	8	
	5/16-18	27	20	22	16	
	3/8-16	50	37	40	29	
	7/16-14	80	59	65	47	
	1/2-13	122	90	99	72	
	1/2-20	138	102	112	81	
	5/8-11	244	180	199	144	
	3/4-10	433	320	354	256	
	7/8-9	698	515	570	412	
	1.00-8	1046	772	854	617	
	1.00-14	1175	867	960	693	
	1.25-7	2095	1545	1712	1236	
8/L9	1.50-6	3644	2688	2979	2150	

# O-RING BOSS & FLAT FACE O-RING TORQUE SPECIFICATIONS

O-Ring Boss Torque Values		
Size Dash	Nm	Ft-lb
-4	22	16
-5	27	20
-6	36	26
-8	83	60
-10	110	80
-12	187	135
-14	249	180
-16	304	220
-20	387	280
-24	498	360

Flat Face O-Ring Torque Values		
Size Dash	Nm	Ft-lb
-4	18	13
-6	30	22
-8	60	44
-10	85	62
-12	121	88
-14	121	88
-16	160	116
-20	213	154
-24	274	198

# BOLT DRIVE SPECIFICATIONS

Thread Size x Pitch	Hex Head	Socket Head	Flat Head
			
<b>Wrench/Drive Size</b>			
M8 x 1.25	13mm	6mm	5mm
M10 x 1.50	17mm	8mm	6mm
M12 x 1.75	19mm	10mm	8mm
M14 x 1.50	22mm	12mm	10mm
M14 x 2.00	22mm	12mm	10mm
M16 x 2.00	24mm	14mm	10mm
M20 x 1.50	30mm	17mm	12mm
M20 x 2.50	30mm	17mm	12mm
M24 x 3.00	36mm	19mm	14mm
M27 x 3.00	41mm	19mm	-
M30 x 3.50	46mm	22mm	-
M36 x 4.00	55mm	27mm	-
1/4-20	7/16"	3/16"	5/32"
5/16-18	1/2"	1/4"	3/16"
3/8-16	9/16"	5/16"	7/32"
7/16-14	5/8"	3/8"	1/4"
1/2-13	3/4"	3/8"	5/16"
1/2-20	3/4"	3/8"	5/16"
5/8-11	15/16"	1/2"	3/8"
3/4-10	1-1/8"	5/8"	1/2"
7/8-9	1-5/16"	3/4"	9/16"
1.00-8	1-1/2"	3/4"	5/8"
1.00-14	1-1/2"	3/4"	5/8"
1.25-7	1-7/8"	7/8"	7/8"
1.50-6	2-1/4"	1"	1"

# WARRANTY

## **Claim Procedure**

Notify the Genesis Service Department of the potential warranty claim prior to making the repair. Digital pictures are very helpful for diagnosing problems and recommending repairs.

Contact the Genesis Service Department before making alterations, changes or repairs to any component that is going to be considered for warranty. Not doing so will void all Genesis warranty consideration.

The Genesis Service Department will issue an authorization number to track the repair costs, outgoing parts, and/or defective parts returning to the factory.

Replacement parts must be ordered using a purchase order number. Shipping is standard ground. Overnight shipping is available by request, and Genesis will not cover the shipping charge.

When the repair is complete, submit an invoice to the Genesis Service Department within 30 days. Include itemized internal labor reporting, parts lists and invoices for outside contractors. Reference the authorization number on all invoices.

When returning parts for warranty consideration, include a copy of any related Genesis paperwork along with any other necessary documentation to ensure proper processing and credit. The Genesis Service Department will provide the necessary forms.

Your account will be credited when the warranty claim is accepted.

## **Blade Warranty**

Standard warranty on blades will only be considered on the first edge, and wear on the edge must be 1/8" radius or less. Genesis does not warranty cutting blades that are cracked or broken from top to bottom (perpendicular to the long edge of the blade). Genesis also does not cover fasteners, the labor to replace wear components or collateral damage, such as blade seats, from broken blades, the piercing blade tang or adjustment plates.

**Please direct any questions to the Genesis Service Department: 715-395-5252**

# PARTS ORDER POLICY AND PROCEDURE

## **Parts Orders Should Include**

- Purchase order number
- Model and serial number of attachment
- Part number and quantity needed
- Shipping and billing address
- Method of shipment or required delivery date

## **Placing Orders**

Orders may be placed by phone or e-mail. To e-mail an order, use the form on the following page or your purchase order form. Contact information is located at the front of this manual.

## **Part Numbers**

Part numbers are listed in a separate Parts Manual or, if included, the Parts section of this manual. Contact the Genesis Parts Department with questions regarding part numbers, availability and pricing.

## **Shipping**

All orders will be shipped best way surface unless an alternate shipping method is requested. Shipping charges are not included in the purchase price of parts.

## **Invoices**

All invoices are due upon receipt. Any accounts with invoices open beyond 60 days are subject to review and may be placed on C.O.D. status without further notice.

## **Returns**

Many unused Genesis parts may be returned with proper documentation. Return shipping is the responsibility of the purchaser. Credit will be issued upon return, less a 25% restocking fee. Documentation is required for credit of returned parts. Contact the Genesis Service Department at 715-395-5252 for an RGA (Return Goods Authorization) number and form. An RGA must accompany every return. Items shipped without an RGA may be returned to sender.

## **Warranty Returns**

All parts returned to Genesis for warranty consideration must be returned with a completed RGA (Return Goods Authorization) provided by the Genesis Service Department. The form needs to be completed in its entirety, including any additional information requested by the Service Department. Return shipping is the responsibility of the sender and will be credited upon claim approval. A determination to accept or deny the claim will be made based upon the information available to Genesis. Warranty on purchased parts other than wear components is 6 months. Genesis does not cover labor costs to replace purchased parts replaced under warranty. There is no warranty period on wear parts or components.





# INDEX

1-1/4" Split Flange Kit - Code 62	33	6300054 Plug Socket Head 08MB	29
1" Split Flange Kit - Code 61	33	6300061 Pilot to Close Check Valve	37
1" Split Flange Kit - Code 62	33	6300076 Plug Socket Head 04MB	37
1101955 Mach Blade Razor	11	6300078 Plug Socket Head 06MB	37
1103607 Mach Pin Keeper Rear	17	6300088 Diagnostic Nipple 04MP	29
1103609 Mach Bolt Socket Head Capscrew 1 - 8 x 4¼	13	6300305 Adaptor 10MB-08MFFOR-90	25, 27
1104709 Mach Plt Valve Mount	25	6300361 Valve Flow Control	31
1105397 Shim Set, Blade	11	6300364 Filter	31
1105551 Hose	27	6300497 Adaptor Bulkhead 08MB-08MO	31
1105854 Mach Flange Shoulder Bolt	19	6300609 Valve Line Body	31
1105883 Plt Bolt Cover	21	6300623 Logic Element	37
1105888 Hose	39	6300625 Pressure Reducing Valve	37
1105939 Mach Blade Tip Right	13	6300731 Adaptor 02MP-04MO	39
1105940 Mach Blade Tip Left	13	6300903 Plug Pipe Orifice 01MP 1/16-27 NPT	37
1105941 Mach Blade Guide	11	6301112 O-Ring	19
1106413 Mach Guide Blade Adjustment Plate	11	6301200 Valve Shuttle	37
1106414 Mach Guide Blade Adjustment Plate	11	6310001 Diagnostic Nipple Dust Cap	29
1106466 Hose	27	6310183 Adaptor 08MB-08MB	31
1106477 Shim Set, Guide Blade	11	6360010 Valve Block	29
1106478 Shim Set, Auto Guide	15	6360022 Manifold Block	37
1106542 Mach Tie Rod Nut	7, 9	6380035 Valve Counterbalance	29
1106874 Mach Bearing RH	7	Assembly Access Covers	5, 18, 19
1106875 Mach Bearing LH	9	Assembly Auto Guide	5, 14, 15
1106876 Mach Blade	11, 13	Assembly Cylinder B12.0 R8.0 S22.00	33
1106877 Mach Adjustment Plate Primary	11	Assembly Cylinder Pins	5, 16, 17
1106879 Mach Adjustment Plate Secondary	11	Assembly Lower Blades	5, 10, 11
1106882 Shim Set Thrust Washer	7, 9	Assembly Open and Close Circuit	5, 32, 33
1106883 Mach End Cap	7, 9	Assembly Pivot Group - Left Side	5, 8, 9
1106885 Mach Tie Rod	7	Assembly Pivot Group - Right Side	5, 6, 7
1106886 Mach Thrust Washer	7, 9	Assembly Rotation	5, 22, 23, 25, 27
1106888 Wldt Front Cyl Pin	17	Assembly Rotation Circuit - 2nd Member	5, 24, 25
1106889 Mach Rear Cyl Pin	17	Assembly Rotation Circuit - 3rd Member	5, 26, 27
1106892 Mach Plt Frmd Valve Tray	33	Assembly Slewing Ring Lubrication	5, 38, 39
1106899 Hose	33	Assembly Swivel Manifold	5, 33, 34, 35
1106900 Hose	33	Assembly Upper Blades	5, 12, 13
1106901 Hose	33	Assembly Upper Head	5, 20, 21
1106902 Hose	33	Bolt Drive Specifications	46
1106928 Hose	25	Bolt Torque Specifications	40, 44
1106929 Hose	25	Contact Information	2, 52
1107582 Wldt Cover	19	F090880 Hex Nut .88-9	11
1107838 Plt Rear Cover	19	F0110030 Hex Head Capscrew M10 x 1.50 x 30	21
1108183 Socket Head Capscrew M12 x 1.75 x 70 (Custom Shaft)	23	F0110035 Hex Head Capscrew M10 x 1.50 x 35	33
3100133 Mach Bearing Upper Cylinder Connection	17	F0110050 Hex Head Capscrew M10 x 1.50 x 50	33
3500350 Mach Pin Keeper (Clevis)	17	F0112020 Hex Head Capscrew M12 x 1.75 x 20	19
3501912 Mach Spacer	27	F0112030 Hex Head Capscrew M12 x 1.75 x 30	21
3503361 Mach Bracket	27	F0112050 Hex Head Capscrew M12 x 1.75 x 50	33
5500752 Plt Strap	21	F0112100 Hex Head Capscrew M12 x 1.75 x 100	25
5512411 Mach Grease Bulkhead Adaptor	39	F0112140 Hex Head Capscrew M12 x 1.75 x 140	27
5512419 Mach Slewing Ring Grease Adaptor	39	F0116230 Hex Head Capscrew M16 x 2.0 x 230	35
5513377 Wtmg Sub Head	21	F0120100 Hex Head Capscrew M20 x 2.5 x 100	23
6100092 Bearing Slewing	23	F0210400 Hex Head Capscrew 1 - 8 x 4	15
6200002 Grease Fitting	7, 9, 15, 17, 21, 39	F0288200 Hex Head Capscrew 7/8 - 9 x 2	11
6300052 Adaptor 12MB-08MO	25, 27	F0288350 Hex Head Capscrew 7/8 - 9 x 3½	11
		F0288450 Hex Head Capscrew 7/8 - 9 x 4½	11
		F0412030 Flat Head Capscrew M12 x 1.75 x 30	7, 9

# INDEX

- F0588450 Flat Head Capscrew  $\frac{7}{8}$  - 9 x 4 $\frac{1}{2}$  11
- F0588500 Flat Head Capscrew  $\frac{7}{8}$  - 9 x 5 13
- F0588600 Flat Head Capscrew  $\frac{7}{8}$  - 9 x 6 13
- F0610025 Socket Head Capscrew M10 x 1.50 x 25 7, 9, 39
- F0612040 Socket Head Capscrew M12 x 1.75 x 40 7, 9
- F0612090 Socket Head Capscrew M12 x 1.75 x 120 33
- F0616035 Socket Head Capscrew M16 x 2 x 35 33
- F0616060 Socket Head Capscrew M16 x 2 x 60 7, 9
- F0620100 Socket Head Capscrew M20 x 2.50 x 100 17
- F0620180 Socket Head Capscrew M20 x 2.50 x 180 17
- F0908809 Hex Nut  $\frac{7}{8}$  - 9 13
- F1020250 Nylock Hex Nut M20 x 2.50 17
- F1201021 Flat Washer M10 7, 9, 21
- F1201224 Flat Washer M12 7, 9, 19, 21, 25, 27
- F1201630 Flat Washer M16 7, 9, 33
- F1300088 Flat Washer Narrow  $\frac{7}{8}$  11, 13
- F1300100 Flat Washer Narrow 1" 15
- F1401000 Lock Washer M10 33
- F1401200 Lock Washer M12 21, 33
- F1900050 Wedge Lock Washer  $\frac{1}{2}$  23
- F1900063 Wedge Lock Washer  $\frac{5}{8}$  35
- F2588088 Set Screw Socket Head  $\frac{7}{8}$  - 9 x  $\frac{7}{8}$  11
- F3616020 Socket Head Shoulder Screw M16 x 2 x 20 33
- General Arrangement 4, 5
- H0261100 Split Flange Half 1.00 Code 61 33
- H0262100 Split Flange Half 1.00 Code 62 33
- H0262125 Split Flange Half 1.25 Code 62 33
- Hex Head Capscrew 23
- Mach Bearing 21
- Mach Boom Bearing 21
- Mach Main Shaft 9
- Mach Port Block 33
- Mach Spacer 23
- Mach Spacer Sleeve 21
- Mach Washer 23
- Motor 23
- O-Ring 33
- O-Ring Boss & Flat Face O-Ring Torque Specifications 45
- Parts Order Form 49
- Parts Order Policy and Procedure 48
- Pinion 23
- Procedures 42, 43
- Regen Block Sub-Assembly 36, 37
- S0190219 O-Ring 33
- S0190222 O-Ring 33
- S0190238 O-Ring 7, 9
- Seal Kit 6300622 36, 37
- Seal Kit 6300624 36, 37
- Seal Kit 6300633 28, 29
- Seal Kit 6300634 30, 31
- Seal Kit SK00024 36, 37
- Seal Kit SK00058 28, 29
- Seal Kit SK00125 36, 37
- Seal Kit SK00188 37
- Socket Head Capscrew 33
- Sub-Assembly Line Mount Manifold 5, 25, 27, 30, 31
- Sub-Assembly Regen Block 5
- Sub-Assembly Rotate Cross-over / C'bal 5, 25, 27, 28, 29
- Table of Contents 3
- Thread Treatment Diagram 41
- Torque Arm Kit 35
- Valve Regen 33
- Valve Relief 29
- Warranty 47
- Wldt Pin 21
- Wtmg Lug Upper Head 5, 21
- Wtmg Stick 5
- Wtmg Sub Head Cover 21
- Wtmg Upper 5



**GENESIS®**

The Promise of Performance.

## CONTACT INFORMATION

### Genesis Attachments

1000 Genesis Drive  
Superior, WI 54880 USA

Toll Free: 888-SHEAR-IT  
(888-743-2748)

Phone: 715.395.5252

E-mail:  
info@genesisattachments.com

### Europe/Africa/Middle East Genesis GmbH

Teramostrasse 23  
87700 Memmingen, Germany

Phone: +49 83 31 9 25 98 0  
Fax: +49 83 31 9 25 98 80  
genesis-europe.com

E-mail:  
info@genesis-europe.com

### Asia Pacific Representative Office

24 Upper Serangoon View #12-28  
Singapore 534205

Phone: +65 9673 9730

E-mail:  
tchoo@genesisattachments.com

### Central America & Colombia

Cra 13A #89-38 / Ofi 613  
Bogota, Colombia

Phone: +57 1 610 8160 / 795 8747

E-mail:  
contact@themsagroup.com

View and download all manuals: [genesisattachments.com/manuals](http://genesisattachments.com/manuals)  
Patents: [genesisattachments.com/products/patents](http://genesisattachments.com/products/patents)

Rev. X - 10-11-24