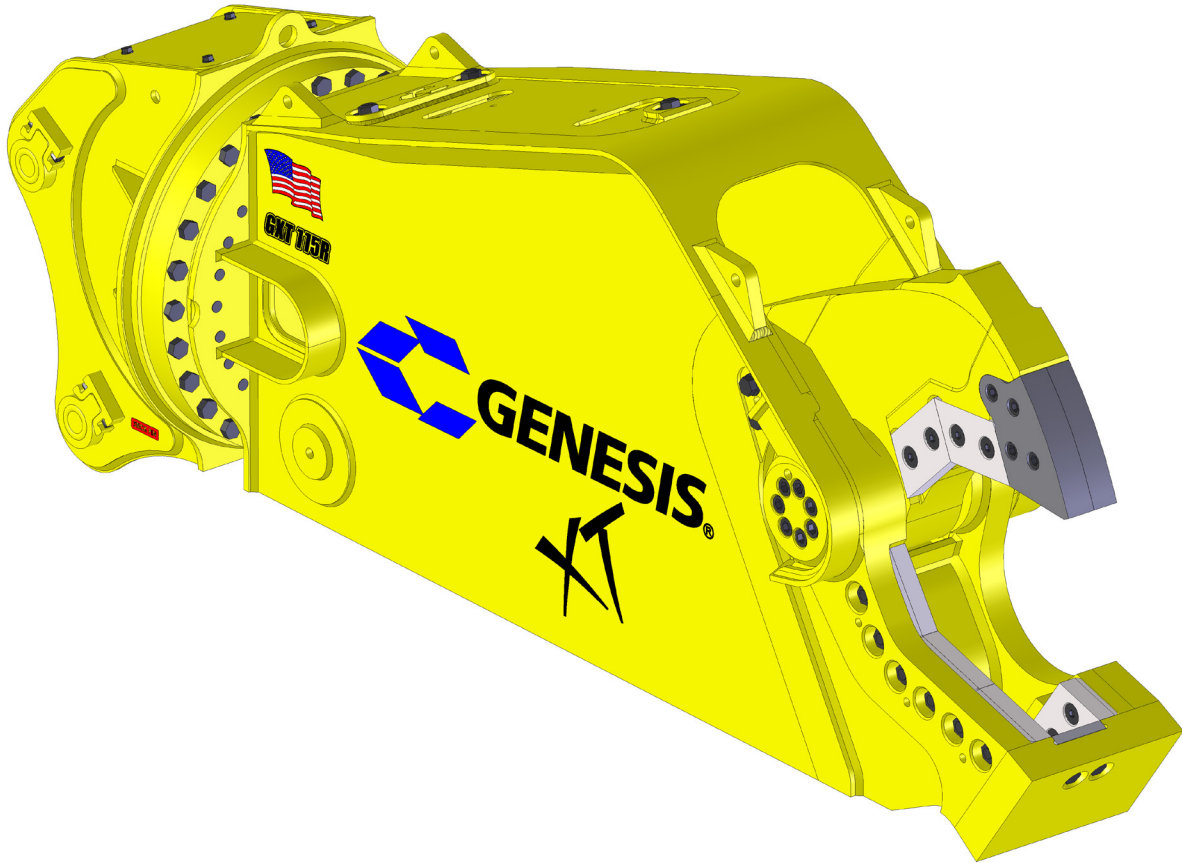


GENESIS[®]

The Promise of Performance.

GXT 115R Mobile Shear

PARTS MANUAL



CONTACT INFORMATION

Genesis Attachments

1000 Genesis Drive
Superior, WI 54880 USA

Toll Free: 888-SHEAR-IT
(888-743-2748)

Phone: 715.395.5252
Fax: 715.395.5255

E-mail:
info@genesisattachments.com

Europe/Africa/Middle East Genesis GmbH

Teramostrasse 23
87700 Memmingen, Germany

Phone: +49 83 31 9 25 98 0
Fax: +49 83 31 9 25 98 80
genesis-europe.com

E-mail:
info@genesis-europe.com

Asia Pacific Representative Office

24 Upper Serangoon View #12-28
Singapore 534205

Phone: +65 9673 9730

E-mail:
tchoo@genesisattachments.com

Central America & Colombia

Cra 13A #89-38 / Ofi 613
Bogota, Colombia

Phone: +57 1 610 8160 / 795 8747

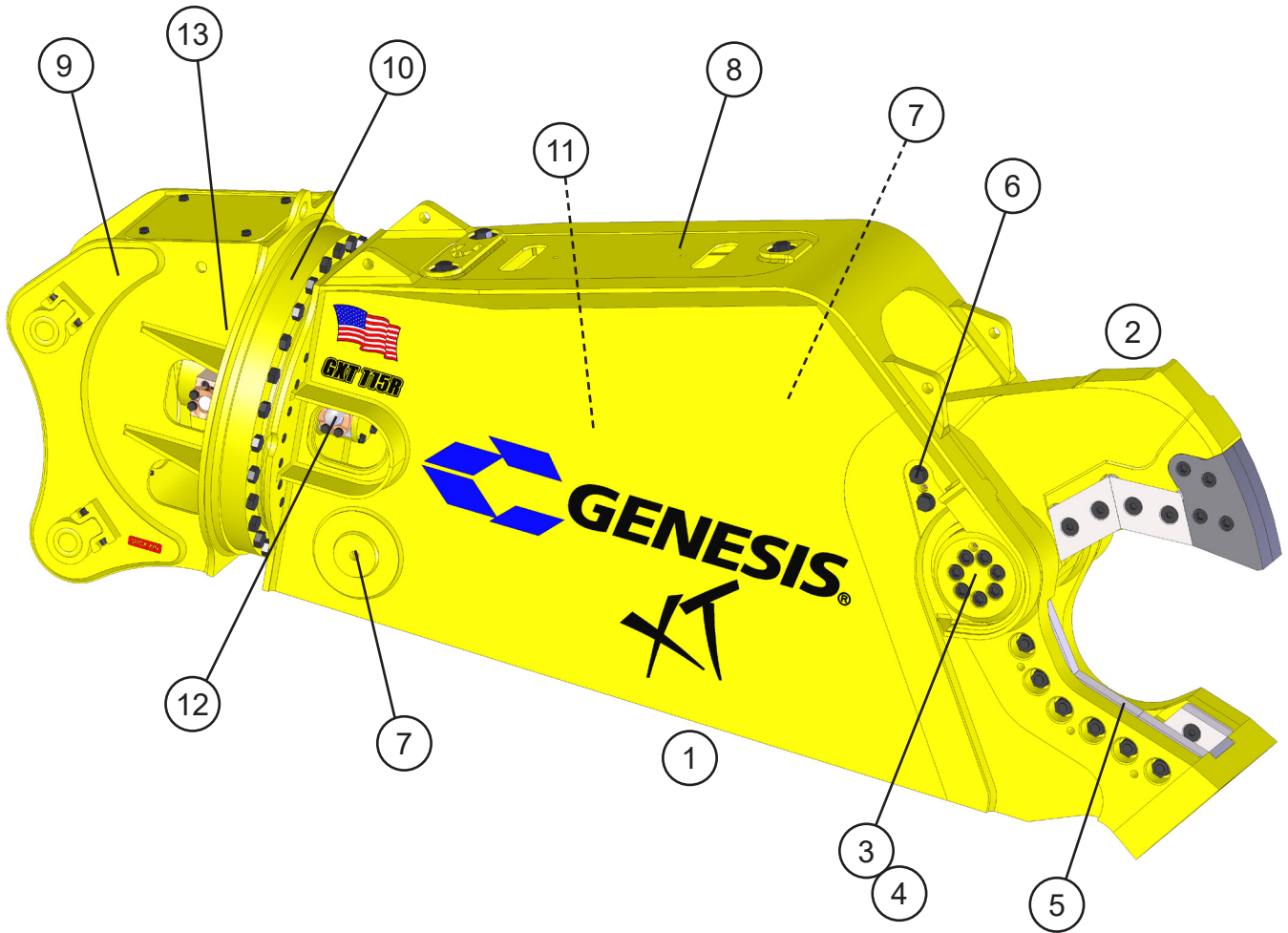
E-mail:
contact@themsagroup.com

View and download all manuals: genesisattachments.com/manuals
Patents: genesisattachments.com/products/patents

TABLE OF CONTENTS

CONTACT INFORMATION	2
GENERAL ARRANGEMENT	4
ASSEMBLY PIVOT GROUP - RIGHT SIDE	6
ASSEMBLY PIVOT GROUP - LEFT SIDE	8
ASSEMBLY BLADE KIT	10
ASSEMBLY AUTO GUIDE	12
ASSEMBLY CYLINDER PINS	14
ASSEMBLY ACCESS COVERS	16
ASSEMBLY UPPER HEAD	18
ASSEMBLY ROTATION	20
ASSEMBLY ROTATION CIRCUIT - 2ND MEMBER	22
ASSEMBLY ROTATION CIRCUIT - 3RD MEMBER	24
SUB-ASSEMBLY ROTATE CROSS-OVER / C'BAL	26
SUB-ASSEMBLY LINE MOUNT MANIFOLD	28
ASSEMBLY CYLINDER OPEN AND CLOSE	30
ASSEMBLY SWIVEL MANIFOLD	32
REGEN BLOCK SUB-ASSEMBLY - 6360022	34
ASSEMBLY SLEWING RING LUBRICATION	36
SPLIT FLANGE KITS USED IN THIS MANUAL	38
BOLT TORQUE SPECIFICATIONS	39
THREAD TREATMENT DIAGRAM	40
Mobile Shears.....	40
PROCEDURES	41
Cleaning.....	41
Threadlocker.....	41
Anti-Seize.....	42
No Thread Treatment.....	42
BOLT TORQUE SPECIFICATIONS	43
Dry Torque Values.....	43
Wet Torque Values.....	43
O-RING BOSS & FLAT FACE O-RING TORQUE SPECIFICATIONS	44
BOLT DRIVE SPECIFICATIONS	45
WARRANTY	46
Claim Procedure.....	46
Blade Warranty.....	46
PARTS ORDER POLICY AND PROCEDURE	47
Parts Orders Should Include.....	47
Placing Orders.....	47
Part Numbers.....	47
Shipping.....	47
Invoices.....	47
Returns.....	47
Warranty Returns.....	47
PARTS ORDER FORM	48
INDEX	49
CONTACT INFORMATION	51

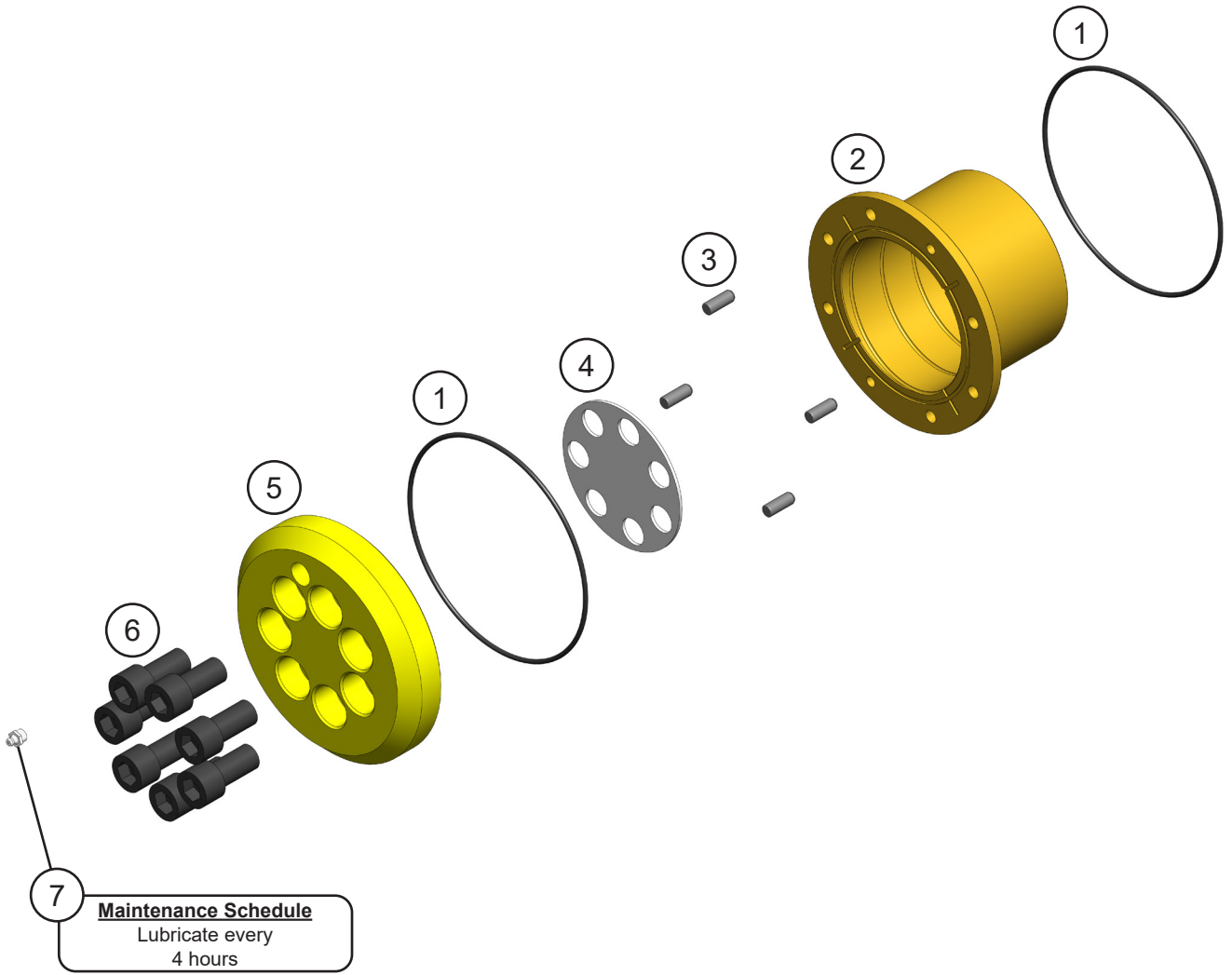
GENERAL ARRANGEMENT



GENERAL ARRANGEMENT

ITEM	QTY	PART NUMBER	DESCRIPTION
1	1	1107394	Wtmg Stick
2	1	1107431	Wtmg Upper
3		See page 6	Assembly Pivot Group - Right Side
4		See page 8	Assembly Pivot Group - Left Side
5		See page 10	Assembly Blade Kit
6		See page 12	Assembly Auto Guide
7		See page 14	Assembly Cylinder Pins
8		See page 16	Assembly Access Covers
9		See page 18	Assembly Upper Head
10		See page 20	Assembly Rotation
11		See page 30	Assembly Open and Close Circuit
12		See page 32	Assembly Swivel Manifold
13		See page 36	Assembly Slewing Ring Lubrication

ASSEMBLY PIVOT GROUP - RIGHT SIDE

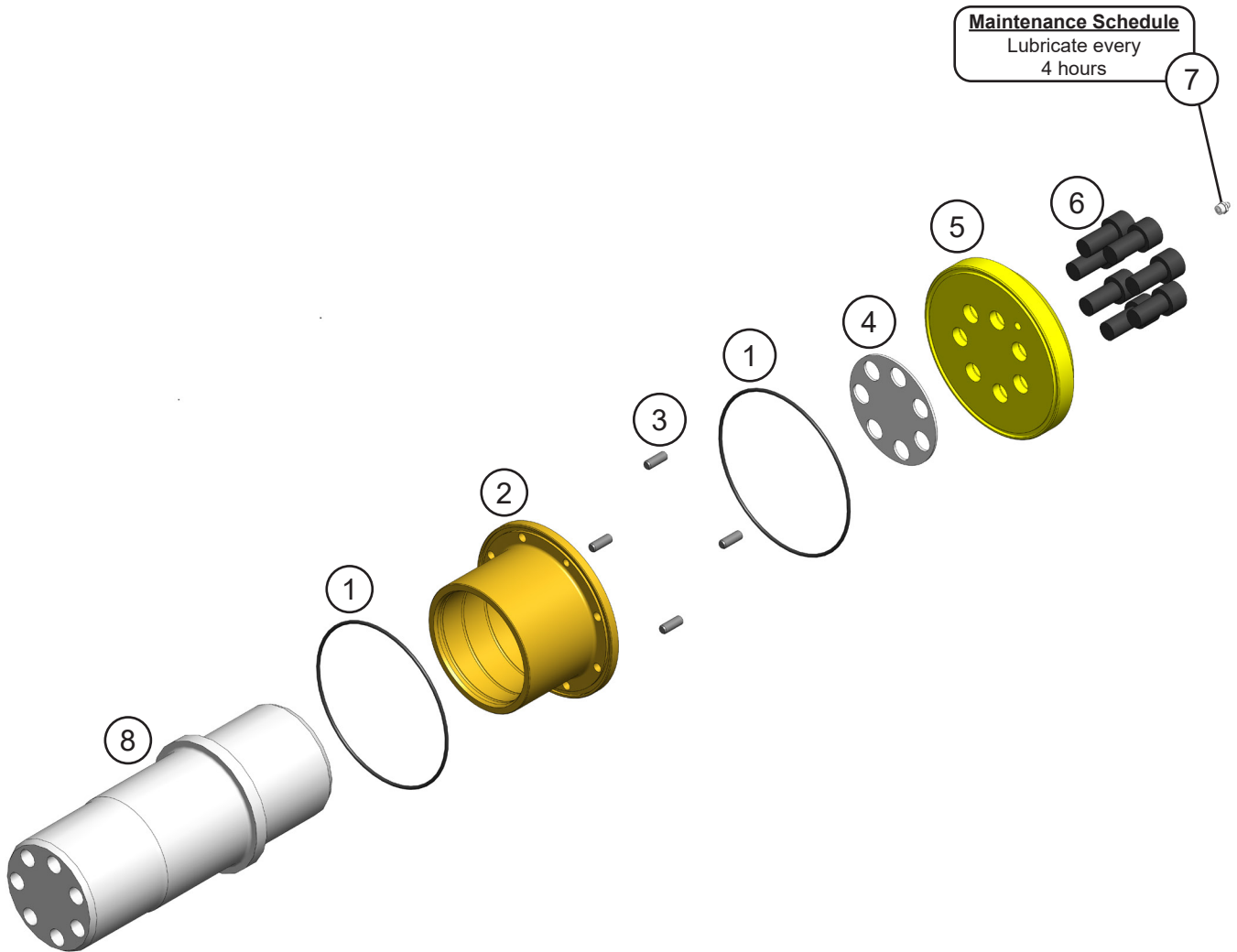


7 **Maintenance Schedule**
Lubricate every
4 hours

ASSEMBLY PIVOT GROUP - RIGHT SIDE

ITEM	QTY	PART NUMBER	DESCRIPTION
1	2	S0190262	O-Ring
2	1	1107414	Mach Bearing
3	4	6200066	Dowel Pin
4	1	1107426	Shim Set Main Shaft
5	1	1107425	Mach End Cap
6	7	F0620040	Socket Head Capscrew M20 x 2.50 x 40
7	1	6200002	Grease Fitting

ASSEMBLY PIVOT GROUP - LEFT SIDE



ASSEMBLY PIVOT GROUP - LEFT SIDE

ITEM	QTY	PART NUMBER	DESCRIPTION
1	2	S0190262	O-Ring
2	1	1107414	Mach Bearing
3	4	6200066	Dowel Pin
4	1	1107426	Shim Set Main Shaft
5	1	1107425	Mach End Cap
6	7	F0620040	Socket Head Capscrew M20 x 2.50 x 40
7	1	6200002	Grease Fitting
8	1	*	Mach Main Shaft

* Part number is Serial Number specific. For replacement parts call the Genesis Parts Department.

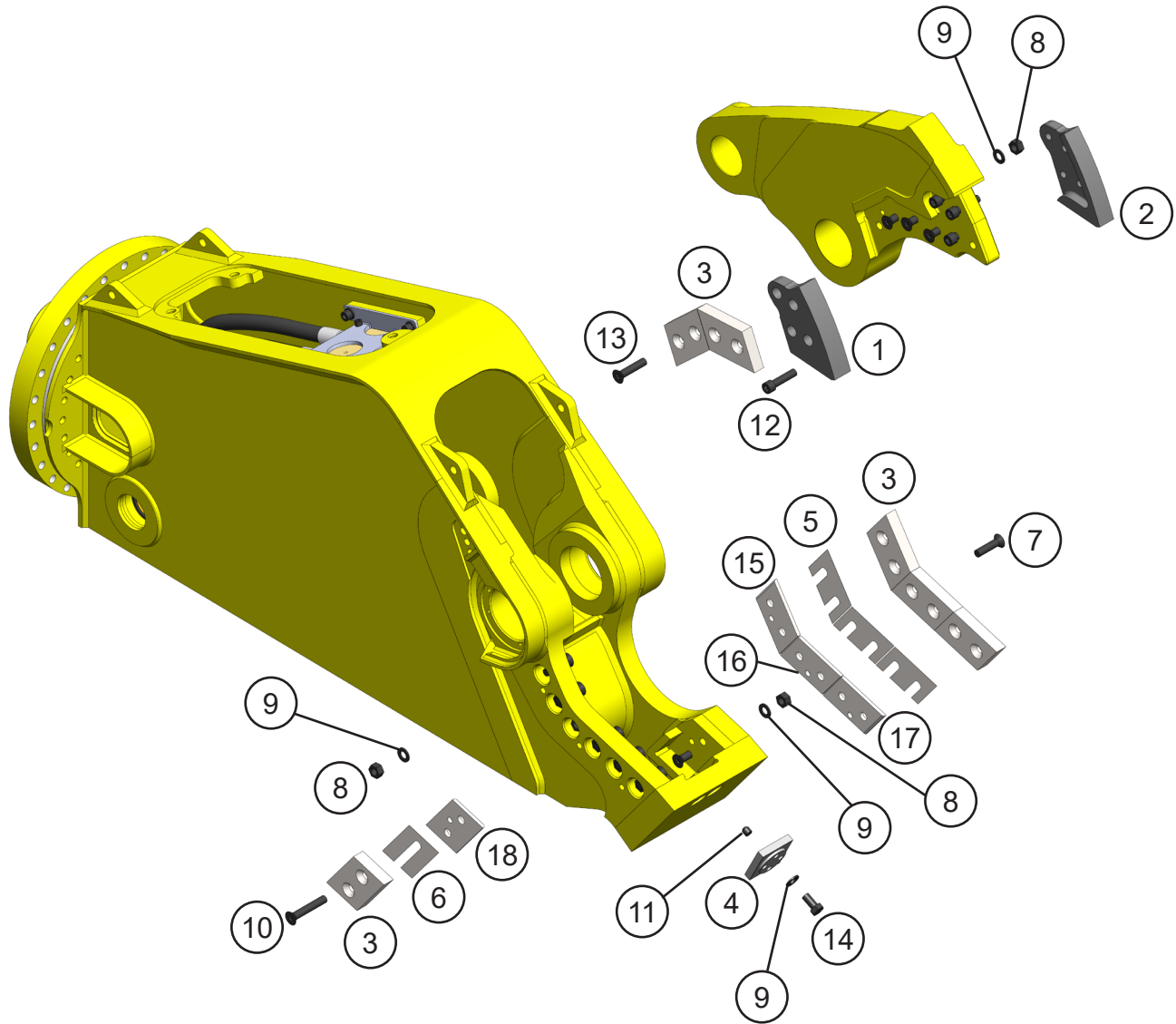
USA

715-395-3488

Europe

+49 83 31 9 25 98 0

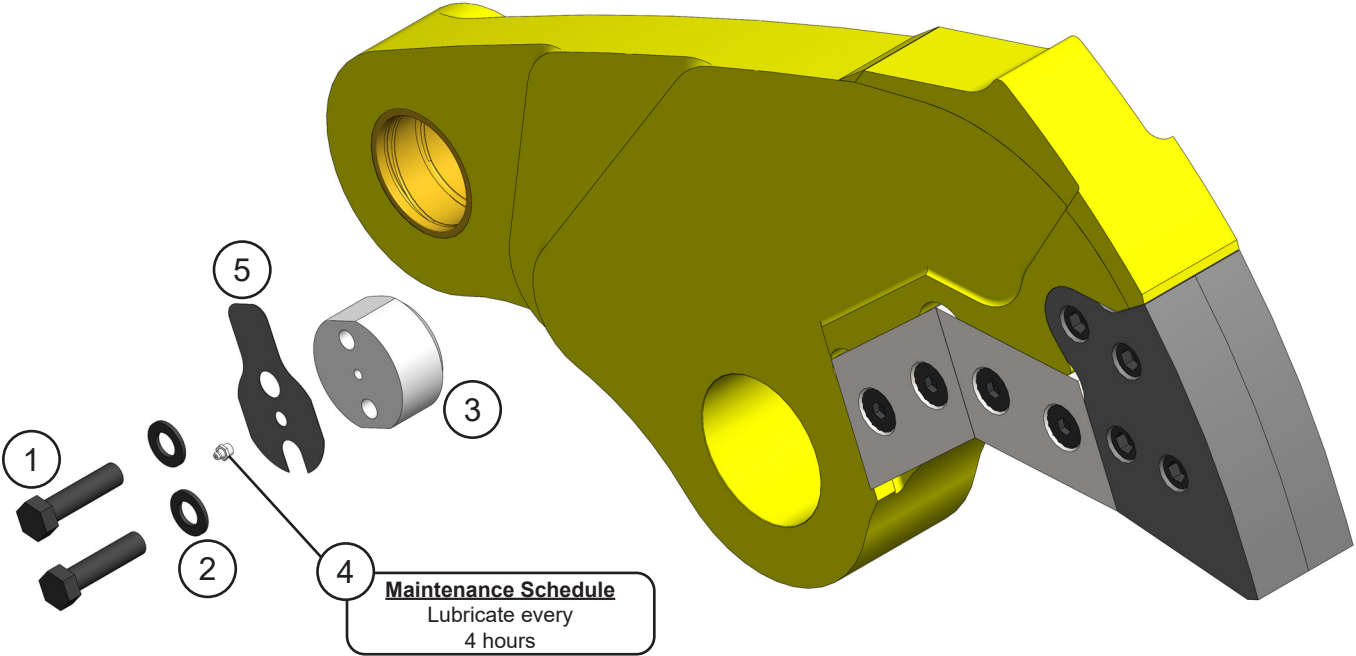
ASSEMBLY BLADE KIT



ASSEMBLY BLADE KIT

ITEM	QTY	PART NUMBER	DESCRIPTION
1	1	1105375	Mach Blade Tip RH
2	1	1105376	Mach Blade Tip LH
3	6	1107404	Mach Blade
4	1	4500399	Mach Blade Razor
5	3	1107447	Shim Set - Blade
6	1	1107448	Shim Set - Guide
7	6	F0575300	Flat Head Capscrew $\frac{3}{4}$ - 10 x 3
8	12	F0907510	Hex Nut $\frac{3}{4}$ - 10
9	14	F1300075	Flat Washer Narrow $\frac{3}{4}$
10	2	F0575450	Hex Head Capscrew $\frac{3}{4}$ - 10 x 4 $\frac{1}{2}$
11	2	F2575075	Set Screw Socket Head $\frac{3}{4}$ - 10 x $\frac{3}{4}$
12	4	F0775300	Socket Head Capscrew $\frac{3}{4}$ - 10 x 3
13	4	F0575350	Flat Head Capscrew $\frac{3}{4}$ - 10 x 3 $\frac{1}{2}$
14	2	F0275150	Hex Head Capscrew $\frac{3}{4}$ - 10 x 1 $\frac{1}{2}$
15	1	1107434	Mach Adj Plate Primary
16	1	1107436	Mach Adj Plate Secondary
17	1	1107438	Mach Adj Plate Blade Side Guide
18	1	1107440	Mach Adj Plate Guide Side

ASSEMBLY AUTO GUIDE



ASSEMBLY AUTO GUIDE

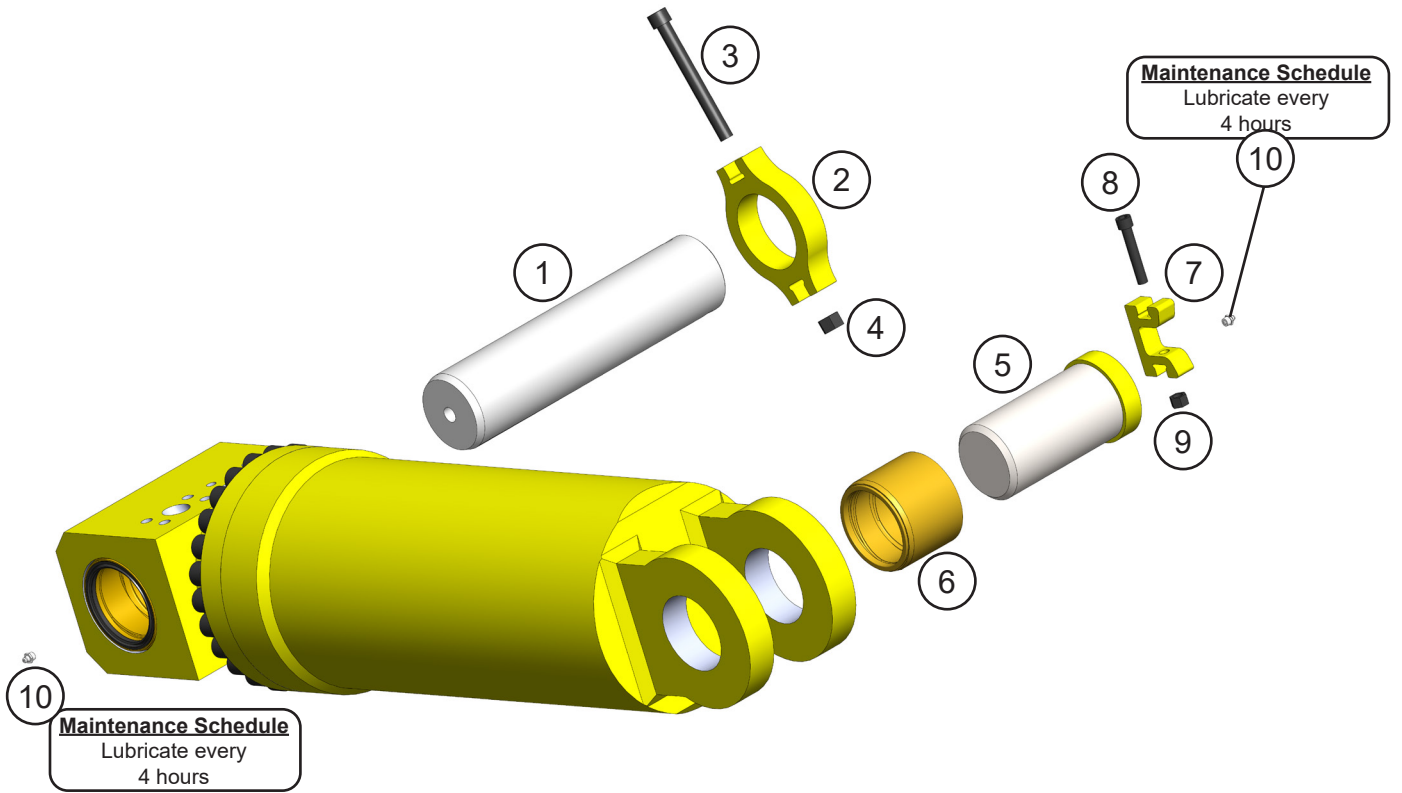
ITEM	QTY	PART NUMBER	DESCRIPTION
1	2	F0275300	Hex Head Capscrew $\frac{3}{4}$ - 10 x 3
2	2	F1300075	Flat Washer Narrow $\frac{3}{4}$
3	1	*	Mach Auto Guide
4	1	6200002	Grease Fitting
5	1	1107417	Shim Set

* Part number is Serial Number specific. For replacement parts call the Genesis Parts Department.

USA
715-395-3488

Europe
+49 83 31 9 25 98 0

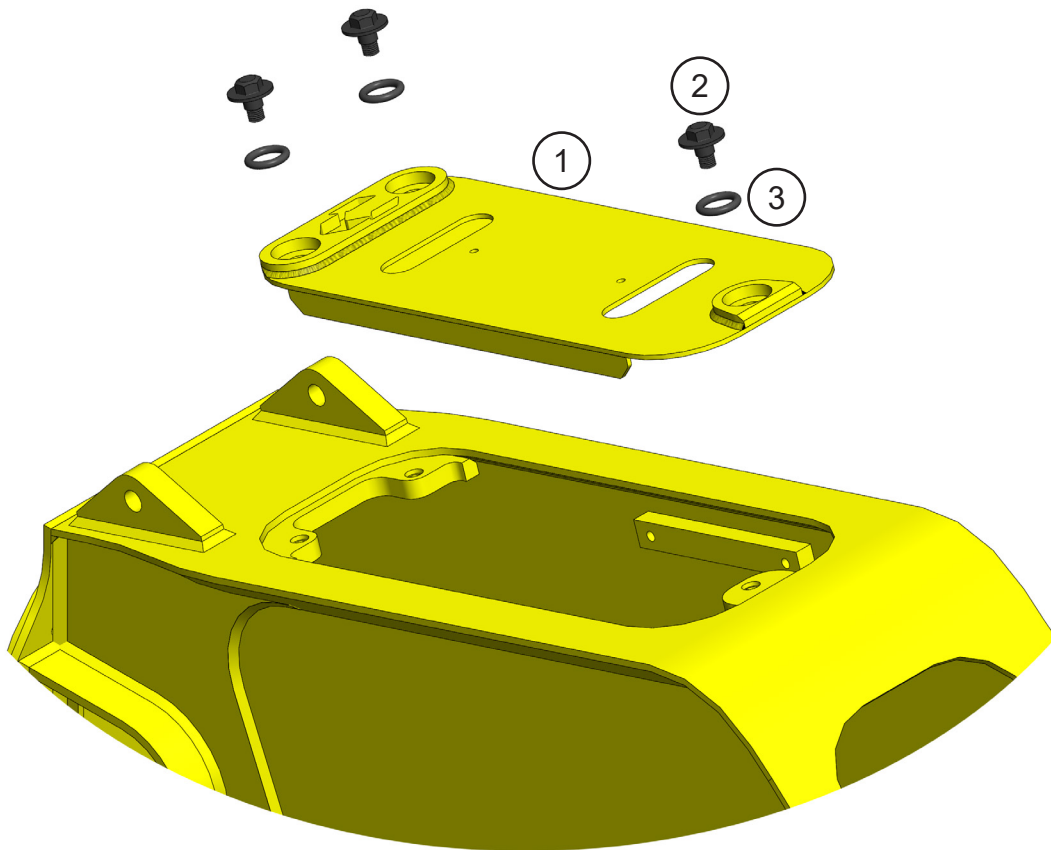
ASSEMBLY CYLINDER PINS



ASSEMBLY CYLINDER PINS

ITEM	QTY	PART NUMBER	DESCRIPTION
1	1	1107415	Mach Rear Cyl Pin
2	1	3500831	Mach Pin Keeper Rear
3	1	F0616150	Socket Head Capscrew M16 x 2.00 x 150
4	1	F1016200	Nylock Hex Nut M16 x 2.00
5	1	1107420	Wldt Front Cyl Pin
6	1	1107422	Mach Bearing Upper Cylinder Connection
7	1	3501246	Mach Pin Keeper (Clevis)
8	1	F0612070	Socket Head Capscrew M12 x 1.75 x 70
9	1	F1012175	Nylock Hex Nut M12 x 1.75
10	2	6200002	Grease Fitting

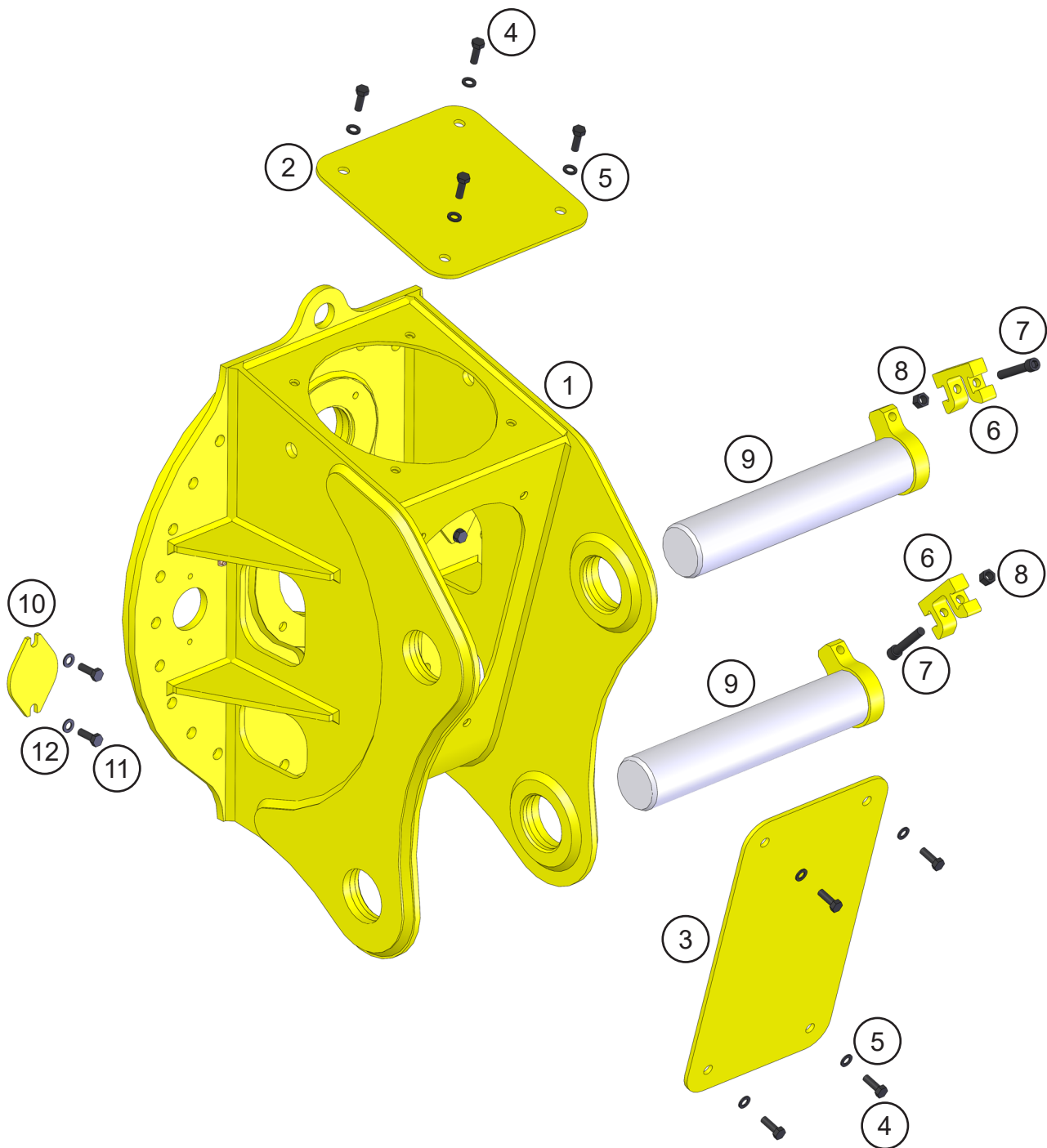
ASSEMBLY ACCESS COVERS



ASSEMBLY ACCESS COVERS

ITEM	QTY	PART NUMBER	DESCRIPTION
1	1	1108985	Wldt Cover
2	3	1105854	Mach Flange Shoulder Bolt
3	3	6301112	O-Ring

ASSEMBLY UPPER HEAD



ASSEMBLY UPPER HEAD

ITEM	QTY	PART NUMBER	DESCRIPTION
1	1	*	Wtmg Upper Head
2	1	3100406	Plt Cover Upper Head
3	1	5510144	Plt Cover Upper Head
4	8	F0110030	Hex Head Capscrew M10 x 1.50 x 30
5	8	F1201021	Flat Washer M19
6	2	3501246	Mach Pin Keeper
7	2	F0612070	Socket Head Capscrew M12 x 1.75 x 70
8	2	F1012175	Nylock Hex Nut M12 x 1.75
9	2	*	Wldt Pin
10	2	1100319	Plt Cover Upper Head
11	4	F0110030	Hex Head Capscrew M10 x 1.50 x 30
12	4	F1201021	Flat Washer M10

* Part numbers are Serial Number specific. For replacement parts call the Genesis Parts Department.

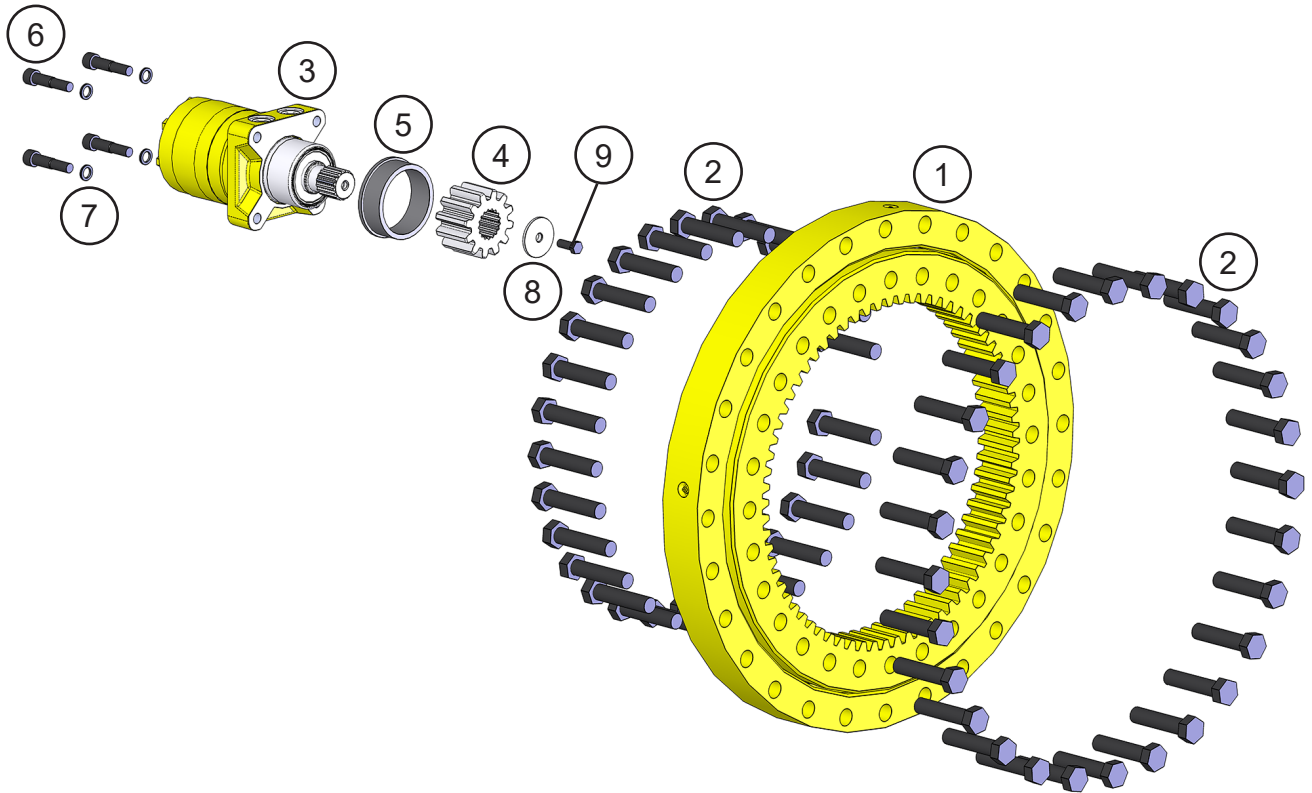
USA

715-395-3488

Europe

+49 83 31 9 25 98 0

ASSEMBLY ROTATION

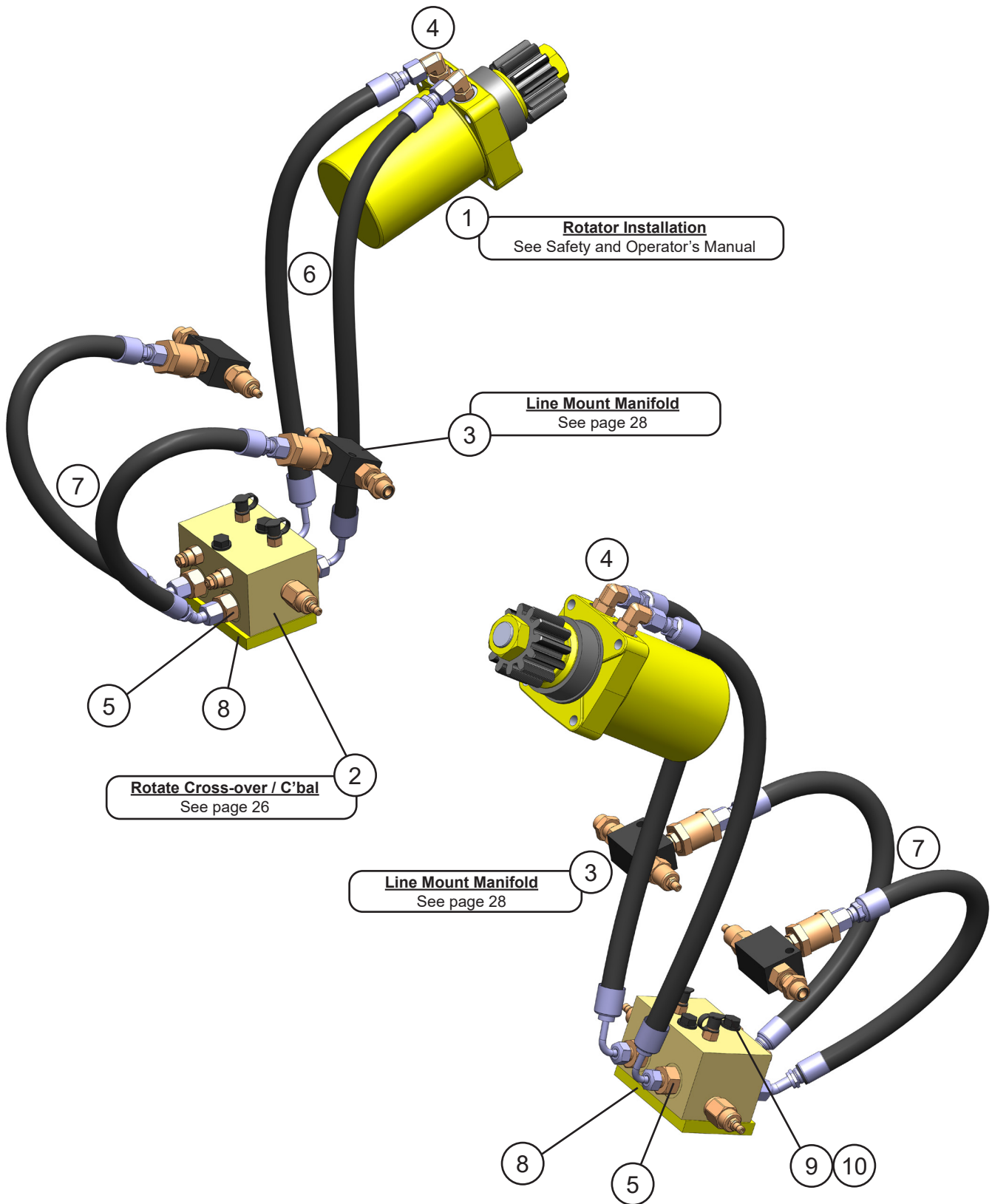


Serial Number Location
Facing the left side of shear,
lower right corner.

ASSEMBLY ROTATION

ITEM	QTY	PART NUMBER	DESCRIPTION
1	1	6100397	Bearing Slewing
2	56	F0120090	Hex Head Capscrew M20 x 2.50 x 90
3	1	6380082	Motor
4	1	3101225	Pinion
5	1	1107014	Mach Spacer
6	4	1108183	Mach Bolt Socket Head Capscrew
7	4	F1900050	Washer Nord Lock
8	1	3101226	Mach Washer Motor Pinion
9	1	F0238100	Hex Head Capscrew $\frac{3}{8}$ - 16 x 1

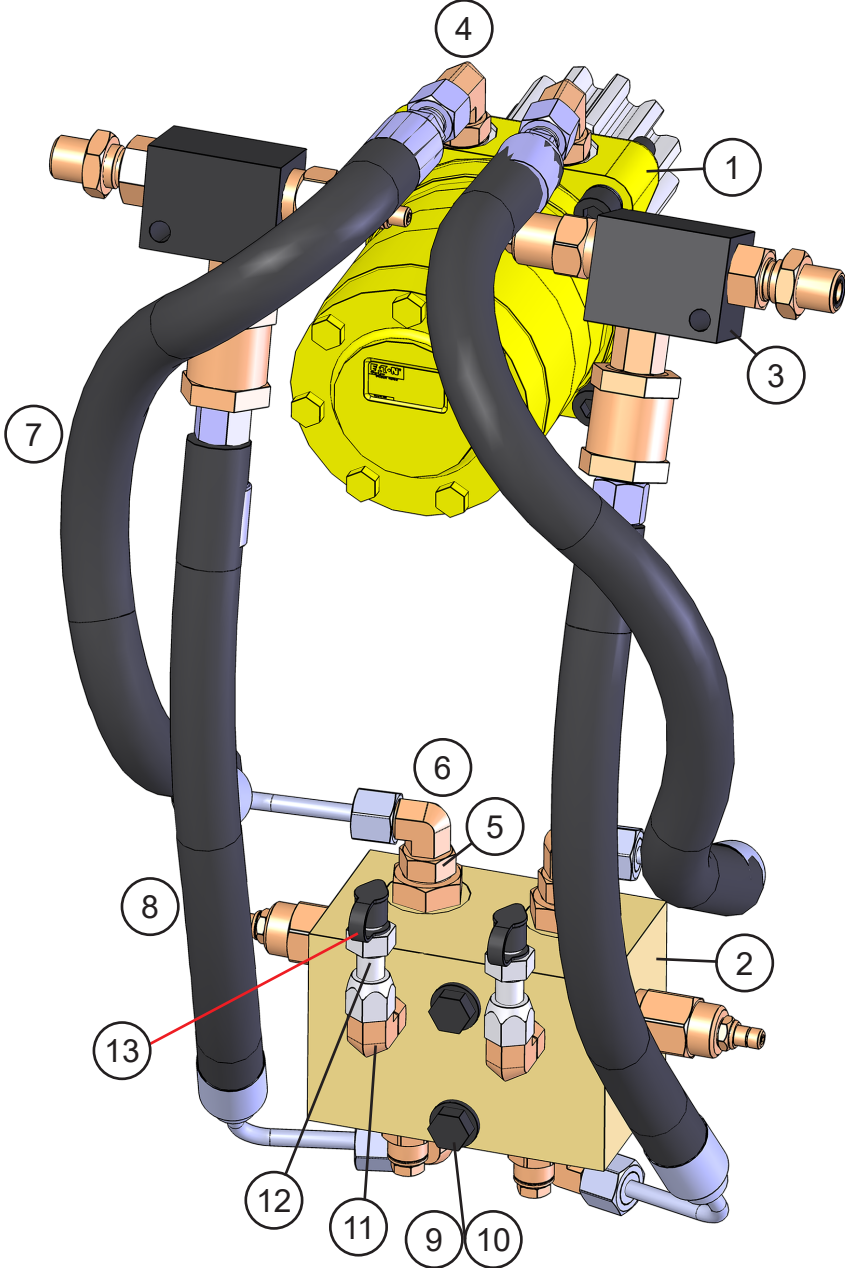
ASSEMBLY ROTATION CIRCUIT - 2ND MEMBER



ASSEMBLY ROTATION CIRCUIT - 2ND MEMBER

ITEM	QTY	PART NUMBER	DESCRIPTION
1	1	See page 20	Assembly Rotation
2	1	See page 26	Sub-Assembly Rotate Cross-over / C'bal
3	2	See page 28	Sub-Assembly Line Mount Manifold
4	2	6300305	Adaptor 10MB-08MFFOR-90
5	4	6300052	Adaptor 12MB-08MO
6	2	1106929	Hose
7	2	1106928	Hose
8	1	1104709	Mach Plt Valve Mount
9	2	F0112110	Hex Head Capscrew M12 x 1.75 x 110
10	2	F1201224	Flat Washer M12

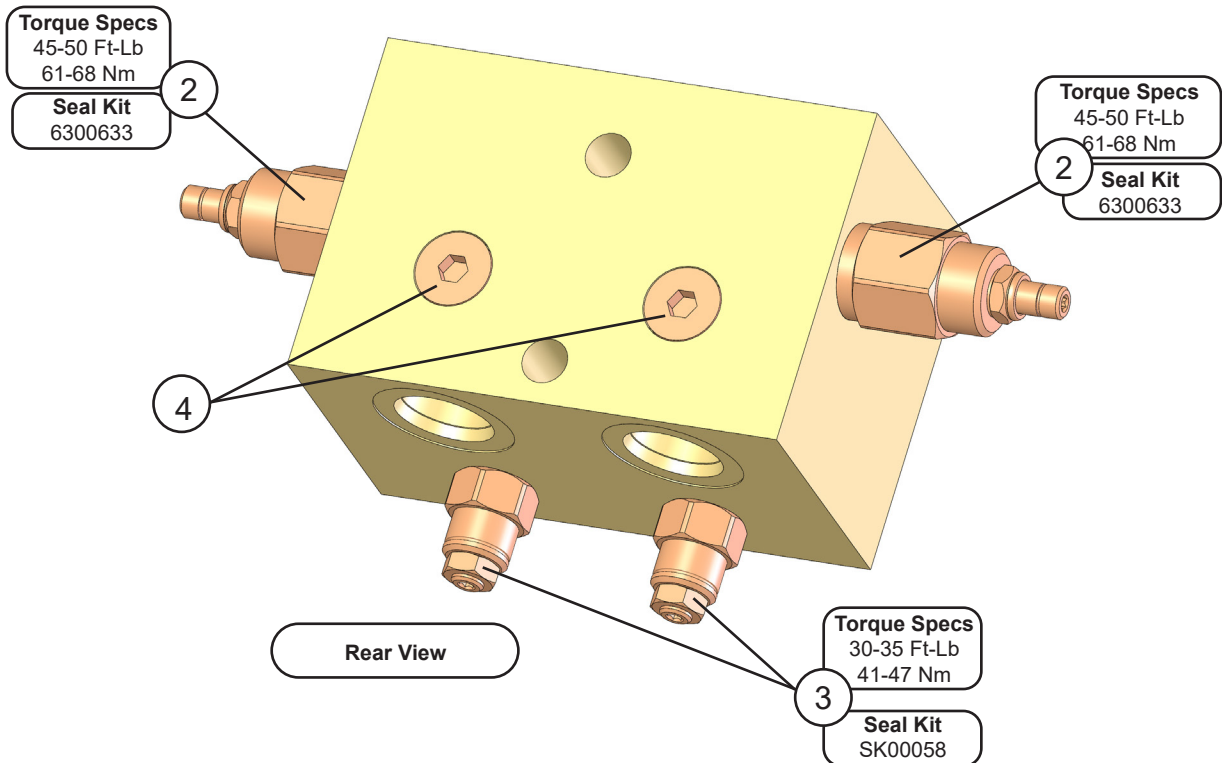
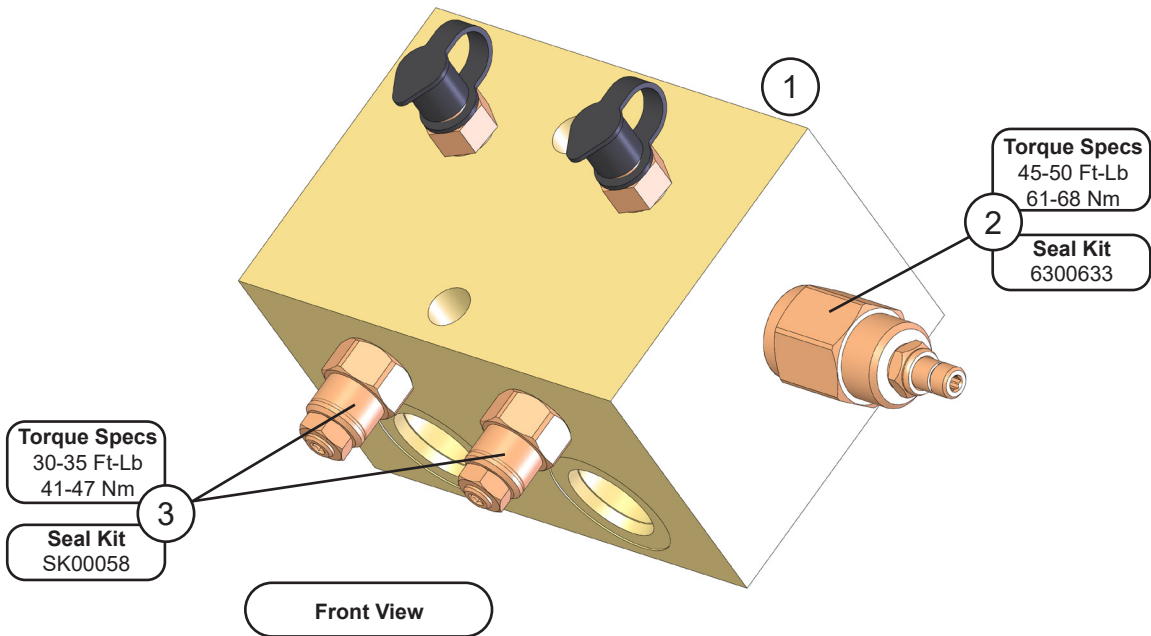
ASSEMBLY ROTATION CIRCUIT - 3RD MEMBER



ASSEMBLY ROTATION CIRCUIT - 3RD MEMBER

ITEM	QTY	PART NUMBER	DESCRIPTION
1	1	See page 20	Assembly Rotation
2	1	See page 26	Sub-Assembly Rotate Cross-over / C'bal
3	2	See page 28	Sub-Assembly Line Mount Manifold
4	2	6300305	Adapter 10MB-08MFFOR-90
5	4	6300512	Adapter 12MB-08FB
6	4	6300303	Adapter 08MB-08MFFOR-90
7	2	1107233	Hose
8	2	1107232	Hose
9	2	F0112110	Hex Head Capscrew M12 X 1.75 X 110
10	2	F1201224	Flat Washer M12
11	2	6310041	Adapter 06MFFOR-06MB-90
12	2	6310051	Diagnostic Nipple
13	2	6310001	Diagnostic Nipple Dust Cap

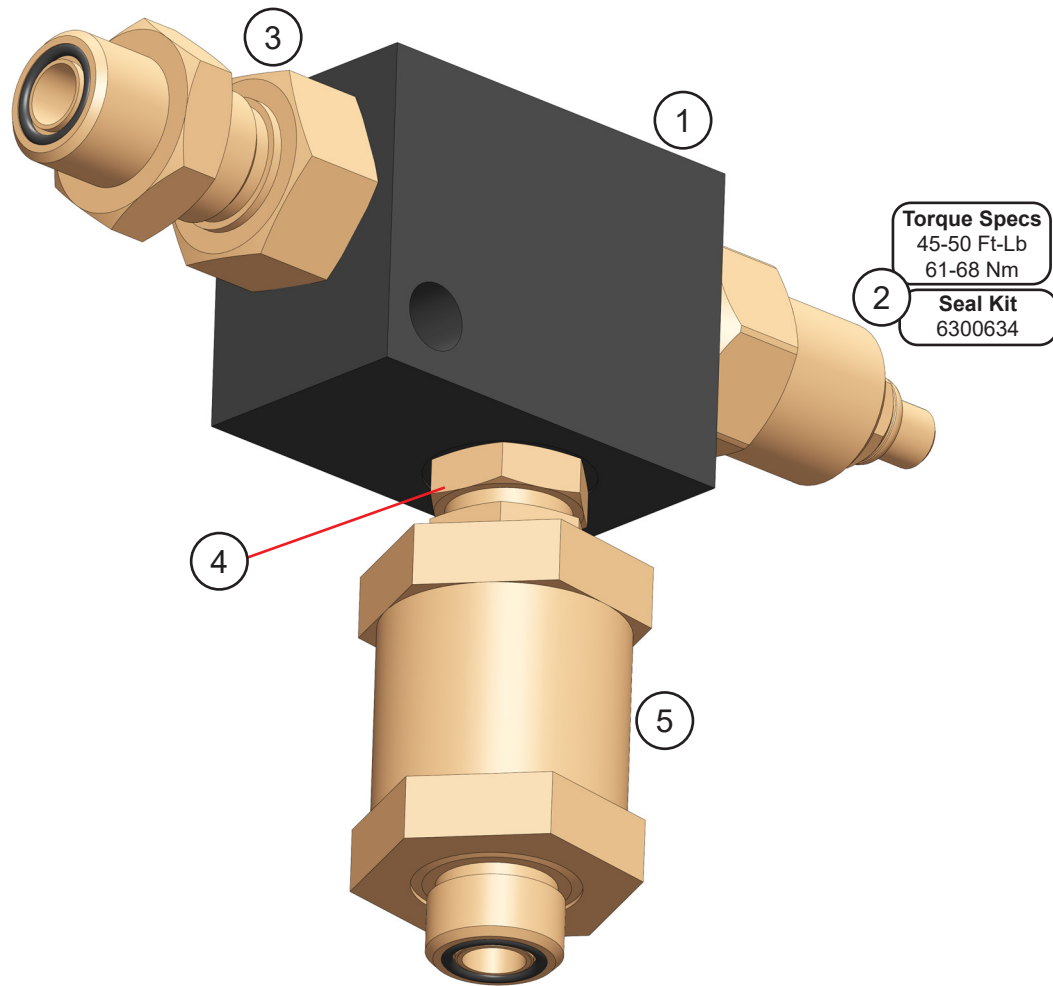
SUB-ASSEMBLY ROTATE CROSS-OVER / C'BAL



SUB-ASSEMBLY ROTATE CROSS-OVER / C'BAL

ITEM	QTY	PART NUMBER	DESCRIPTION	
1	1	6360010	Valve Block	
2	2	6300501	Valve Relief	Seal Kit 6300633
3	2	6380035	Valve Counterbalance	Seal Kit SK00058
4	2	6300054	Plug Socket Head 08MB	

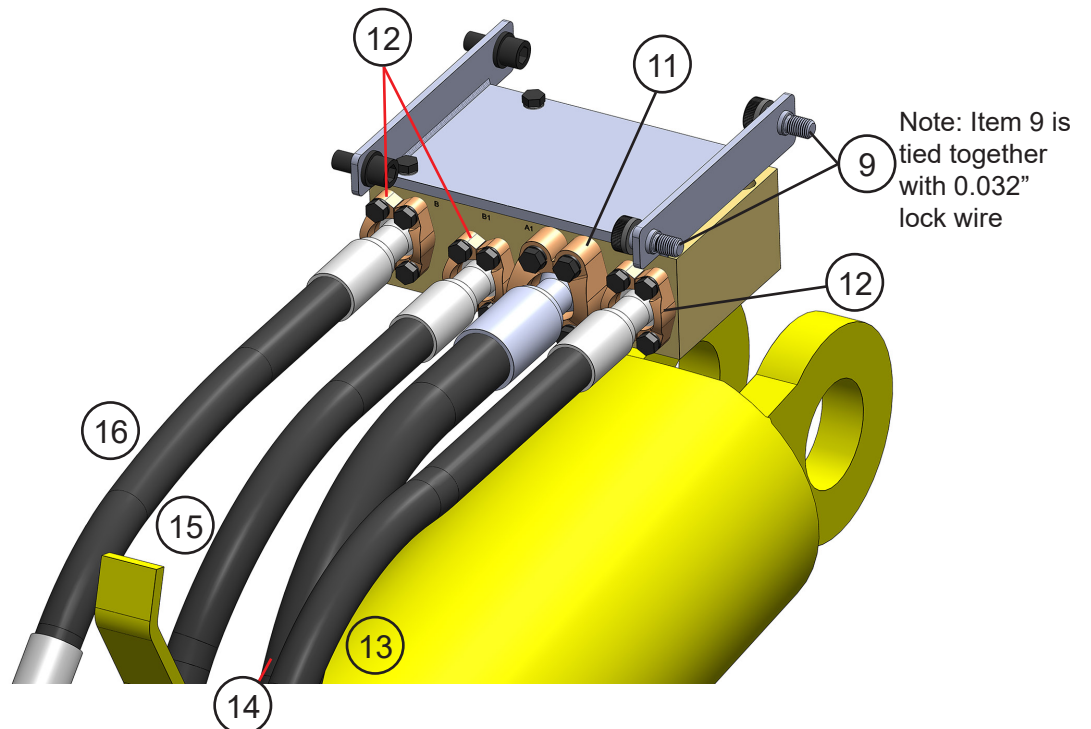
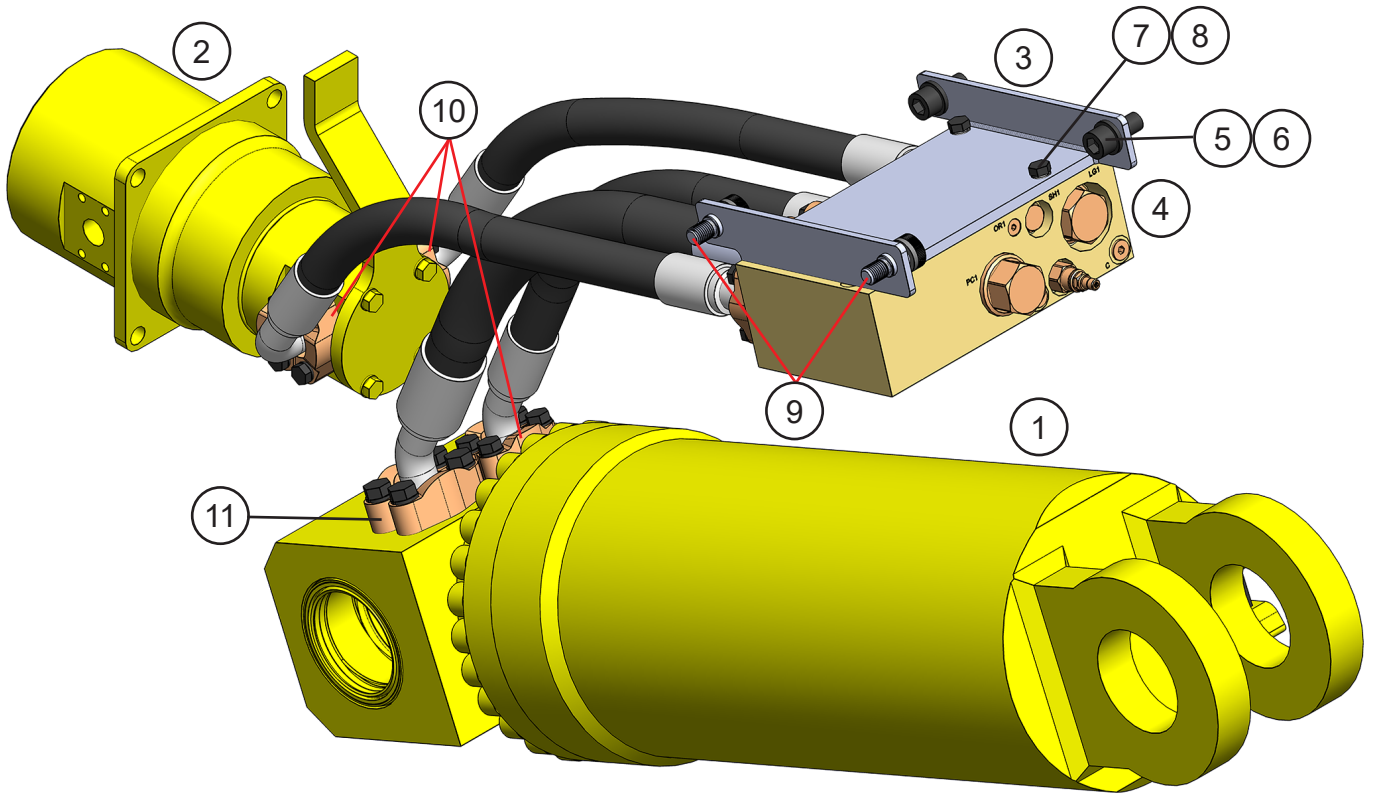
SUB-ASSEMBLY LINE MOUNT MANIFOLD



SUB-ASSEMBLY LINE MOUNT MANIFOLD

ITEM	QTY	PART NUMBER	DESCRIPTION
1	1	6300609	Valve Line Body
2	1	6300361	Valve Flow Control Seal Kit 6300634
3	1	6300497	Adaptor Bulkhead 08MB-08MO
4	1	6310183	Adapter 08MB-08MB
5	1	6300364	Filter

ASSEMBLY CYLINDER OPEN AND CLOSE



ASSEMBLY CYLINDER OPEN AND CLOSE

ITEM	QTY	PART NUMBER	DESCRIPTION
1	1	*	Assembly Cylinder B9.0 R6.0 S22.00
2	1	See page 32	Assembly Swivel Manifold
3	1	1107411	Mach Valve Tray
4	1	See page 34	Valve Regen
5	2	F0616035	Socket Head Capscrew M16 x 2 x 35
6	2	F1201630	Flat Washer M16
7	4	F0110030	Hex Head Capscrew M10 x 1.5 x 30
8	4	F1900040	Washer Nord Lock
9	2	F3616020	Socket Head Shoulder Bolt M16 x 2 x 20
10	3	1" Split Flange Kit - Code 62	
	2	H0262100	Split Flange Half 1.00 Code 62
	4	F0110050	Hex Head Capscrew M10 x 1.50 x 50
	4	F1401000	Lock Washer M10
	1	S0190219	O-Ring
11	2	1¼" Split Flange Kit	
	2	H0262125	Split Flange Half 1.25 Code 62
	4	F0112050	Hex Head Capscrew M12 x 1.75 x 50
	4	F1401200	Lock Washer M12
	1	S0190222	O-Ring
12	3	1" Split Flange Kit - Code 61	
	2	H0261100	Split Flange Half 1.00 Code 61
	4	F0110035	Hex Head Capscrew M10 x 1.50 x 35
	4	F1401000	Lock Washer M10
	1	S0190219	O-Ring
13	1	1107444	Hose
14	1	1107446	Hose
15	1	1107445	Hose
16	1	1107443	Hose

* Part number is Serial Number specific. For replacement parts call the Genesis Parts Department. The cylinder Serial Number is required to order a cylinder seal kit.

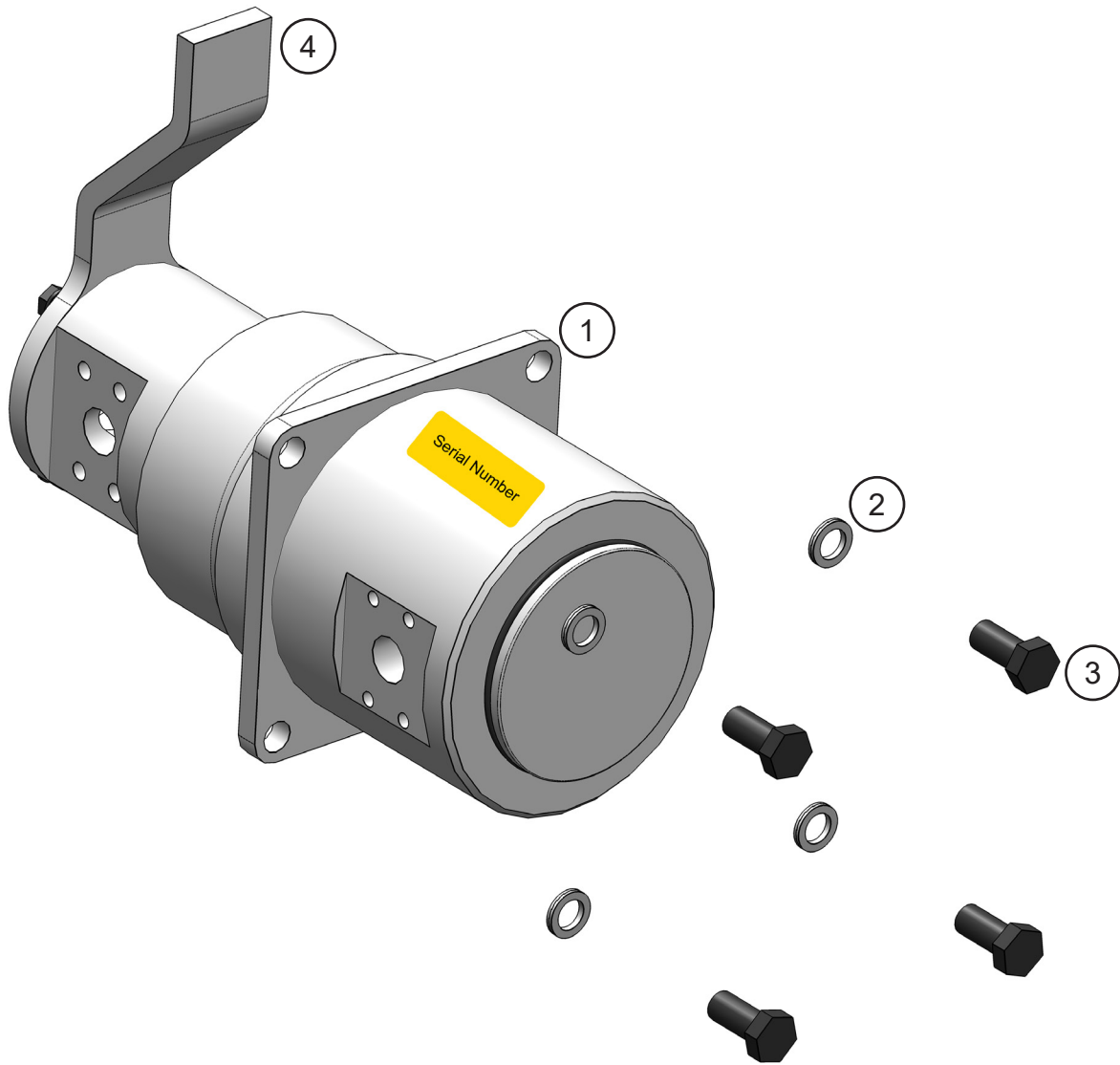
USA

715-395-3488

Europe

+49 83 31 9 25 98 0

ASSEMBLY SWIVEL MANIFOLD



ASSEMBLY SWIVEL MANIFOLD

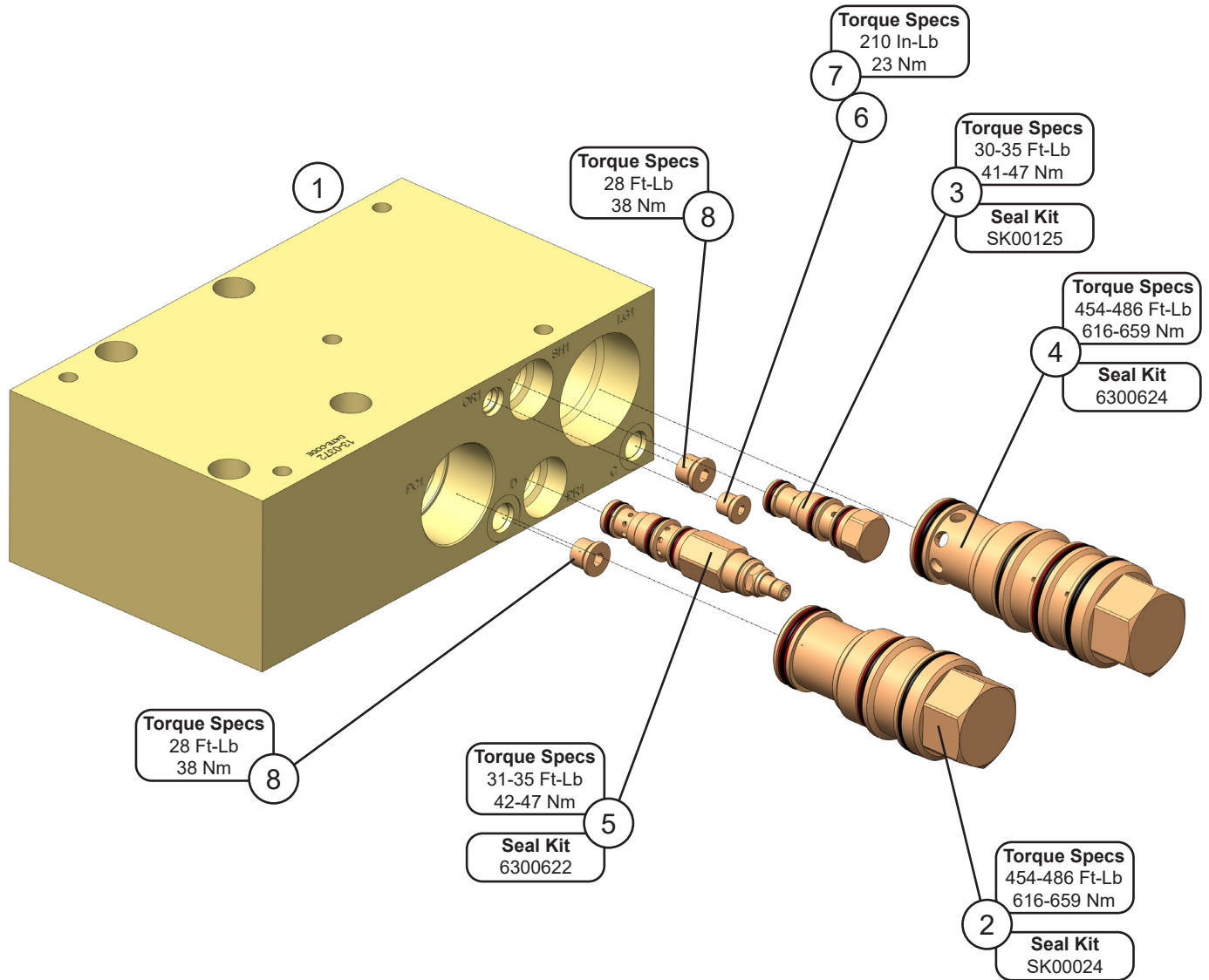
ITEM	QTY	PART NUMBER	DESCRIPTION
1	1	6350185	Assembly Swivel Manifold
2	4	F1900063	Washer Nord Lock
3	4	F0116035	Hex Head Capscrew M16 x 2.0 x 35
4	1	*	Torque Arm Kit

* Part number is Serial Number specific. For replacement parts call the Genesis Parts Department. The swivel Serial Number, located in the highlighted area, is required for **any** parts order.

USA
715-395-3488

Europe
+49 83 31 9 25 98 0

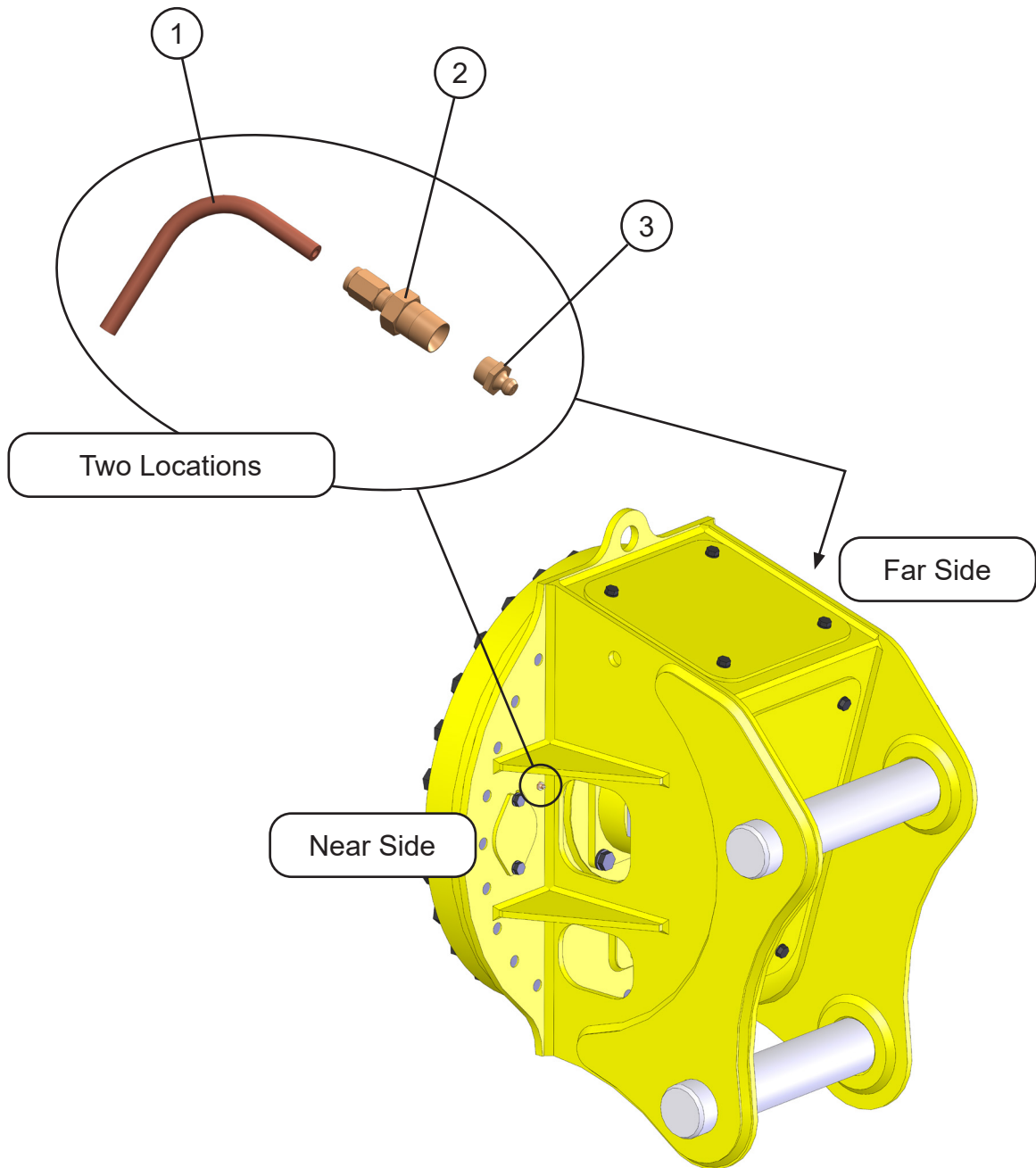
REGEN BLOCK SUB-ASSEMBLY - 6360022



REGEN BLOCK SUB-ASSEMBLY - 6360022

ITEM	QTY	PART NUMBER	DESCRIPTION	
1	1	6360022	Manifold Block	Seal Kit SK00188
2	1	6300061	Pilot to Close Check Valve	Seal Kit SK00024
3	1	6301200	Valve Shuttle	Seal Kit SK00125
4	1	6300623	Logic Element	Seal Kit 6300624
5	1	6300625	Pressure Reducing Valve	Seal Kit 6300622
6	1	6300903	Plug Pipe Orifice 01MP 1/16-27 NPT	
7	1	6300076	Plug Socket Head 04MB	
8	2	6300078	Plug Socket Head 06MB	

ASSEMBLY SLEWING RING LUBRICATION



ASSEMBLY SLEWING RING LUBRICATION

ITEM	QTY	PART NUMBER	DESCRIPTION
1	2	6300095	Copper Tube
2	2	6300094	Compression Connector
3	2	6200002	Grease Fitting

SPLIT FLANGE KITS USED IN THIS MANUAL

1" Split Flange Kit - Code 61 - M10

QTY	PART NUMBER	DESCRIPTION
2	H0261100	Split Flange Half 1.00 Code 61
4	F0110035	Hex Head Capscrew M10 x 1.50 x 35
4	F1401000	Lock Washer M10
1	S0190219	O-Ring

1" Split Flange Kit - Code 62 - M10

QTY	PART NUMBER	DESCRIPTION
2	H0262100	Split Flange Half 1.00 Code 62
4	F0110040	Hex Head Capscrew M10 x 1.50 x 40
4	F1401000	Lock Washer M10
1	S0190219	O-Ring

1" Split Flange Kit - Code 62 - M12

QTY	PART NUMBER	DESCRIPTION
2	H0262100	Split Flange Half 1.00 Code 62
4	F0112040	Hex Head Capscrew M12 x 1.75 x 40
4	F1401200	Lock Washer M12
1	S0190219	O-Ring

1-1/4" Split Flange Kit - Code 62 - M12

QTY	PART NUMBER	DESCRIPTION
2	H0262125	Split Flange Half 1.25 Code 62
4	F0112050	Hex Head Capscrew M12 x 1.75 x 50
4	F1401200	Lock Washer M12
1	S0190222	O-Ring

1-1/4" Split Flange Kit - Code 62 - M14

QTY	PART NUMBER	DESCRIPTION
2	H0262125	Split Flange Half 1.25 Code 62
4	F0114050	Hex Head Capscrew M14 x 2.00 x 50
4	F1401400	Lock Washer M14
1	S0190222	O-Ring

BOLT TORQUE SPECIFICATIONS

Reference the product Thread Treatment Diagrams on page 40 to determine whether to use wet or dry torque values for specific bolts.

Reference Procedures on page 41 for threadlocker or anti-seize application and bolt and bolt hole cleaning.

Prior to torquing, clean all bolt holes, bolts and nuts to remove dirt, grease and oil, and identify bolt type.

Never re-torque bolts that use Loctite. If a bolt becomes loose or damaged after the initial use when Loctite was applied and the bolt was torqued, the bolt must be replaced.

Never break tightened bolts loose with a torque wrench. Doing so may break the torque wrench or take it out of calibration.

Torque wrenches should be calibrated on an annual basis.

When using a torque multiplier with a torque wrench, incorrect settings will be multiplied by the ratio of the torque wrench.

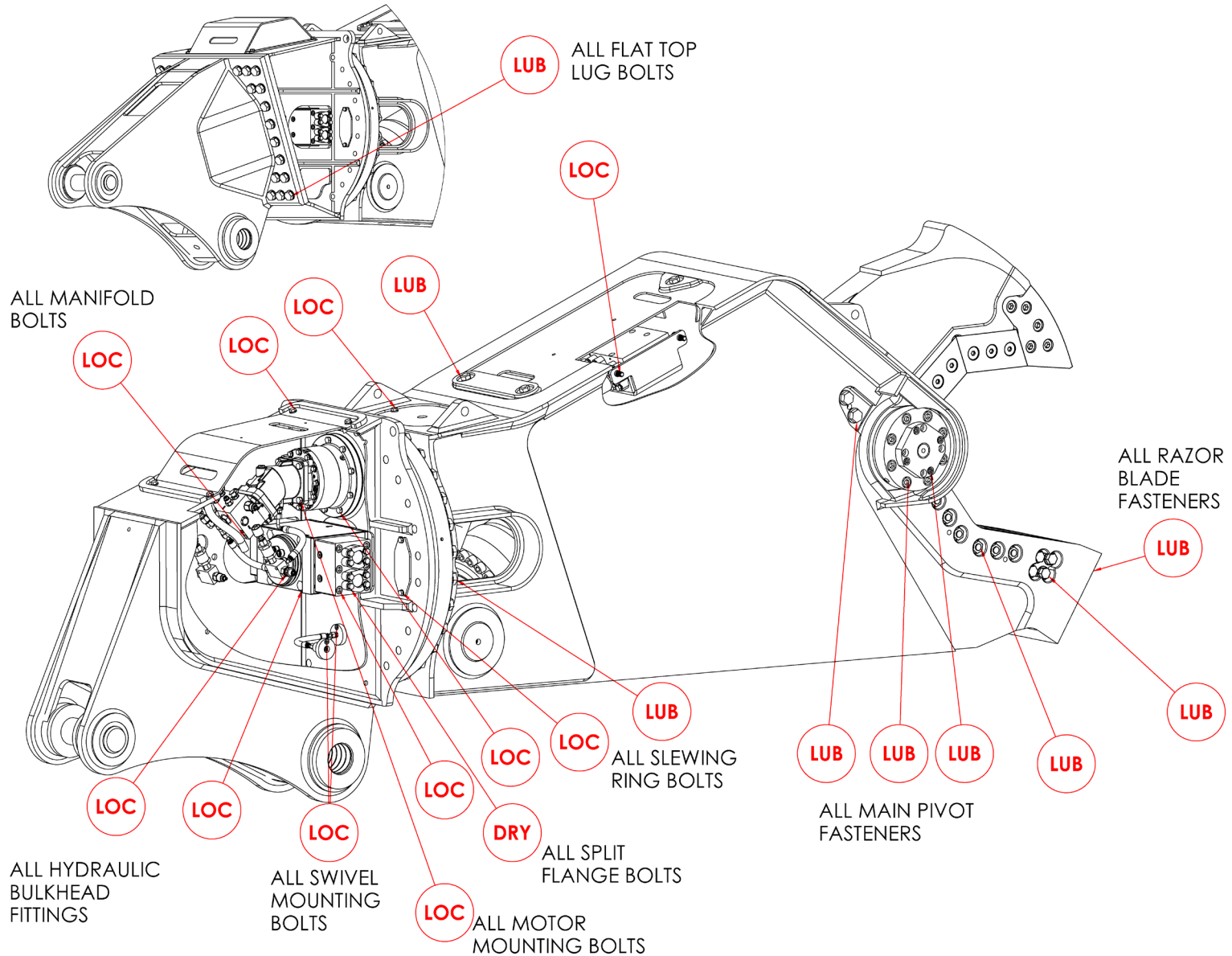
Never use an impact driver on a torque multiplier.

THREAD TREATMENT DIAGRAM

Mobile Shears

Use this diagram to determine what thread treatment, if any, is required for each fastener.

For thread treatment application procedures, see page 41. For prescribed torque values, see page 43.



PROCEDURES

Reference the product Thread Treatment Diagrams on page 40 to determine which of the following procedures is required.

Cleaning

To ensure proper performance of thread treatment and accurate torque values, clean and degrease **all internal and external threads** prior to application of threadlocker, anti-seize or primer and before installation of hardware.

- Ensure both internal and external threads are free of dirt or debris.
- Use brake cleaner or similar cleaning solvent on all threads to remove any grease or oil.
- Allow threads to dry.

NOTICE

Failure to properly clean threads will cause threadlocker, primer, and/or anti-seize to not properly cure!

LOC

Threadlocker

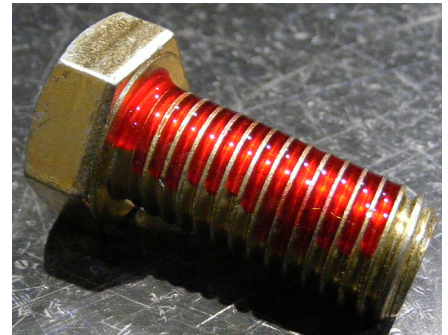
For bolted connections requiring threadlocker, use **Loctite 263** or equivalent applied using the following procedure:

- Clean and degrease all threads.
- For thru holes or nuts, apply threadlocker to bolt threads.
- For blind holes, apply stripe of threadlocker along the length of the hole (applying to the bolt can cause escaping air to remove threadlocker as the bolt is inserted).
- Torque bolt to specified **Wet Torque Value**, see page 43.

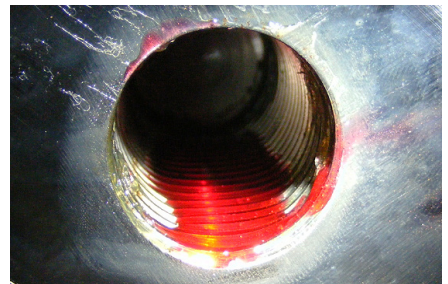
For threaded hydraulic fitting connections, use **Loctite 5452** or equivalent thread sealant in conjunction with **Loctite 7471** primer using the following procedure:

- Clean and degrease all threads.
- Apply Loctite 7471 primer to both external and internal threads and allow to dry.
- Apply threadlocker to 360 degrees of the threads on the male fitting, ensuring adequate coverage.
- Assemble fitting per directions in operator's manual.
- For O-ring boss and flat face O-ring connections, torque fittings to values specified on page 44.

Threadlocker



Blind Hole



Hydraulic Fitting



PROCEDURES

LUB

Anti-Seize

For bolted connections requiring anti-seize lubrication, use **Loctite LB8008** or equivalent using the following procedure:

- Clean and degrease all threads.
- Apply thin coat of anti-seize to internal and external threads and under bolt head and/or nut, ensuring complete coverage.
- Torque bolt to specified **Wet Torque Value**, see page 43.

Anti-Seize

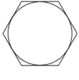
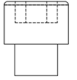
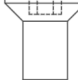


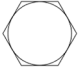
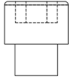
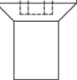
DRY

No Thread Treatment

- Clean and degrease all threads.
- Torque bolt to specified **Dry Torque Value**, see page 43.

BOLT TORQUE SPECIFICATIONS

Dry Torque Values						
		Hex/Socket Head		Flat Head		
						
Fastener Grade	Size x Pitch	Nm	Ft-lb	Nm	Ft-lb	
CL 10.9	M8 x 1.25	35	26	27	20	
	M10 x 1.50	71	53	58	42	
	M12 x 1.75	124	92	101	73	
	M14 x 1.50	200	148	163	118	
	M14 x 2.00	200	148	163	118	
	M16 x 2.00	311	230	254	184	
	M20 x 1.50	610	450	498	360	
	M20 x 2.50	608	449	497	359	
	M24 x 3.00	1054	778	861	622	
	M27 x 3.00	1543	1138	1260	910	
	M30 x 3.50	2095	1545	1712	1236	
	M36 x 4.00	3659	2699	2991	2159	
8	1/4-20	14	11	11	8	
	5/16-18	32	24	26	19	
	3/8-16	59	44	48	35	
	7/16-14	94	70	77	56	
	1/2-13	143	106	116	84	
	1/2-20	162	120	133	96	
	5/8-11	287	212	234	169	
	3/4-10	509	376	415	300	
	7/8-9	821	606	670	484	
	1.00-8	1232	909	1007	727	
	1.00-14	1383	1020	1130	816	
	1.25-7	2463	1817	2013	1453	
8/L9	1.50-6	4287	3162	3504	2529	

Wet Torque Values						
		Hex/Socket Head		Flat Head		
						
Fastener Grade	Size x Pitch	Nm	Ft-lb	Nm	Ft-lb	
CL 10.9	M8 x 1.25	29	22	23	17	
	M10 x 1.50	61	45	49	36	
	M12 x 1.75	105	78	85	62	
	M14 x 1.50	150	111	121	88	
	M14 x 2.00	170	126	138	100	
	M16 x 2.00	265	196	216	156	
	M20 x 1.50	456	337	372	269	
	M20 x 2.50	517	382	422	305	
	M24 x 3.00	894	660	731	528	
	M27 x 3.00	1312	968	1072	774	
	M30 x 3.50	1779	1312	1453	1049	
	M36 x 4.00	3110	2294	2542	1835	
8	1/4-20	13	10	11	8	
	5/16-18	27	20	22	16	
	3/8-16	50	37	40	29	
	7/16-14	80	59	65	47	
	1/2-13	122	90	99	72	
	1/2-20	138	102	112	81	
	5/8-11	244	180	199	144	
	3/4-10	433	320	354	256	
	7/8-9	698	515	570	412	
	1.00-8	1046	772	854	617	
	1.00-14	1175	867	960	693	
	1.25-7	2095	1545	1712	1236	
8/L9	1.50-6	3644	2688	2979	2150	

O-RING BOSS & FLAT FACE O-RING TORQUE SPECIFICATIONS

O-Ring Boss Torque Values		
Size Dash	Nm	Ft-lb
-4	22	16
-5	27	20
-6	36	26
-8	83	60
-10	110	80
-12	187	135
-14	249	180
-16	304	220
-20	387	280
-24	498	360

Flat Face O-Ring Torque Values		
Size Dash	Nm	Ft-lb
-4	18	13
-6	30	22
-8	60	44
-10	85	62
-12	121	88
-14	121	88
-16	160	116
-20	213	154
-24	274	198

BOLT DRIVE SPECIFICATIONS

Thread Size x Pitch	Hex Head	Socket Head	Flat Head
			
Wrench/Drive Size			
M8 x 1.25	13mm	6mm	5mm
M10 x 1.50	17mm	8mm	6mm
M12 x 1.75	19mm	10mm	8mm
M14 x 1.50	22mm	12mm	10mm
M14 x 2.00	22mm	12mm	10mm
M16 x 2.00	24mm	14mm	10mm
M20 x 1.50	30mm	17mm	12mm
M20 x 2.50	30mm	17mm	12mm
M24 x 3.00	36mm	19mm	14mm
M27 x 3.00	41mm	19mm	-
M30 x 3.50	46mm	22mm	-
M36 x 4.00	55mm	27mm	-
1/4-20	7/16"	3/16"	5/32"
5/16-18	1/2"	1/4"	3/16"
3/8-16	9/16"	5/16"	7/32"
7/16-14	5/8"	3/8"	1/4"
1/2-13	3/4"	3/8"	5/16"
1/2-20	3/4"	3/8"	5/16"
5/8-11	15/16"	1/2"	3/8"
3/4-10	1-1/8"	5/8"	1/2"
7/8-9	1-5/16"	3/4"	9/16"
1.00-8	1-1/2"	3/4"	5/8"
1.00-14	1-1/2"	3/4"	5/8"
1.25-7	1-7/8"	7/8"	7/8"
1.50-6	2-1/4"	1"	1"

WARRANTY

Claim Procedure

Notify the Genesis Service Department of the potential warranty claim prior to making the repair. Digital pictures are very helpful for diagnosing problems and recommending repairs.

Contact the Genesis Service Department before making alterations, changes or repairs to any component that is going to be considered for warranty. Not doing so will void all Genesis warranty consideration.

The Genesis Service Department will issue an authorization number to track the repair costs, outgoing parts, and/or defective parts returning to the factory.

Replacement parts must be ordered using a purchase order number. Shipping is standard ground. Overnight shipping is available by request, and Genesis will not cover the shipping charge.

When the repair is complete, submit an invoice to the Genesis Service Department within 30 days. Include itemized internal labor reporting, parts lists and invoices for outside contractors. Reference the authorization number on all invoices.

When returning parts for warranty consideration, include a copy of any related Genesis paperwork along with any other necessary documentation to ensure proper processing and credit. The Genesis Service Department will provide the necessary forms.

Your account will be credited when the warranty claim is accepted.

Blade Warranty

Standard warranty on blades will only be considered on the first edge, and wear on the edge must be 1/8" radius or less. Genesis does not warranty cutting blades that are cracked or broken from top to bottom (perpendicular to the long edge of the blade). Genesis also does not cover fasteners, the labor to replace wear components or collateral damage, such as blade seats, from broken blades, the piercing blade tang or adjustment plates.

Please direct any questions to the Genesis Service Department: 715-395-5252

PARTS ORDER POLICY AND PROCEDURE

Parts Orders Should Include

- Purchase order number
- Model and serial number of attachment
- Part number and quantity needed
- Shipping and billing address
- Method of shipment or required delivery date

Placing Orders

Orders may be placed by phone or e-mail. To e-mail an order, use the form on the following page or your purchase order form. Contact information is located at the front of this manual.

Part Numbers

Part numbers are listed in a separate Parts Manual or, if included, the Parts section of this manual. Contact the Genesis Parts Department with questions regarding part numbers, availability and pricing.

Shipping

All orders will be shipped best way surface unless an alternate shipping method is requested. Shipping charges are not included in the purchase price of parts.

Invoices

All invoices are due upon receipt. Any accounts with invoices open beyond 60 days are subject to review and may be placed on C.O.D. status without further notice.

Returns

Many unused Genesis parts may be returned with proper documentation. Return shipping is the responsibility of the purchaser. Credit will be issued upon return, less a 25% restocking fee. Documentation is required for credit of returned parts. Contact the Genesis Service Department at 715-395-5252 for an RGA (Return Goods Authorization) number and form. An RGA must accompany every return. Items shipped without an RGA may be returned to sender.

Warranty Returns

All parts returned to Genesis for warranty consideration must be returned with a completed RGA (Return Goods Authorization) provided by the Genesis Service Department. The form needs to be completed in its entirety, including any additional information requested by the Service Department. Return shipping is the responsibility of the sender and will be credited upon claim approval. A determination to accept or deny the claim will be made based upon the information available to Genesis. Warranty on purchased parts other than wear components is 6 months. Genesis does not cover labor costs to replace purchased parts replaced under warranty. There is no warranty period on wear parts or components.

INDEX

1-1/4" Split Flange Kit - Code 62 - M12	38	6300076 Plug Socket Head 04MB	35
1-1/4" Split Flange Kit - Code 62 - M14	38	6300078 Plug Socket Head 06MB	35
1¼" Split Flange Kit	31	6300094 Compression Connector	37
1" Split Flange Kit - Code 61	31	6300095 Copper Tube	37
1" Split Flange Kit - Code 61 - M10	38	6300303 Adapter 08MB-08MFFOR-90	25
1" Split Flange Kit - Code 62	31	6300305 Adapter 10MB-08MFFOR-90	25
1" Split Flange Kit - Code 62 - M10	38	6300305 Adaptor 10MB-08MFFOR-90	23
1" Split Flange Kit - Code 62 - M12	38	6300361 Valve Flow Control	29
1100319 Plt Cover Upper Head	19	6300364 Filter	29
1104709 Mach Plt Valve Mount	23	6300497 Adaptor Bulkhead 08MB-08MO	29
1105375 Mach Blade Tip RH	11	6300501 Valve Relief	27
1105376 Mach Blade Tip LH	11	6300512 Adapter 12MB-08FB	25
1105854 Mach Flange Shoulder Bolt	17	6300609 Valve Line Body	29
1106928 Hose	23	6300623 Logic Element	35
1106929 Hose	23	6300625 Pressure Reducing Valve	35
1107014 Mach Spacer	21	6300903 Plug Pipe Orifice 01MP 1/16-27 NPT	35
1107232 Hose	25	6301112 O-Ring	17
1107233 Hose	25	6301200 Valve Shuttle	35
1107394 Wtmg Stick	5	6310001 Diagnostic Nipple Dust Cap	25
1107404 Mach Blade	11	6310041 Adapter 06MFFOR-06MB-90	25
1107411 Mach Valve Tray	31	6310051 Diagnostic Nipple	25
1107414 Mach Bearing 7,9		6310183 Adapter 08MB-08MB	29
1107415 Mach Rear Cyl Pin	15	6350185 Assembly Swivel Manifold	33
1107417 Shim Set	13	6360010 Valve Block	27
1107420 Wldt Front Cyl Pin	15	6360022 Manifold Block	35
1107422 Mach Bearing Upper Cylinder Connection	15	6380035 Valve Counterbalance	27
1107425 Mach End Cap 7,9		6380082 Motor	21
1107426 Shim Set Main Shaft 7,9		Assembly Access Covers	5,16,17
1107431 Wtmg Upper	5	Assembly Auto Guide	5,12,13
1107434 Mach Adj Plate Primary	11	Assembly Blade Kit	5,10,11
1107436 Mach Adj Plate Secondary	11	Assembly Cylinder B9.0 R6.0 S22.00	31
1107438 Mach Adj Plate Blade Side Guide	11	Assembly Cylinder Open and Close	30,31
1107440 Mach Adj Plate Guide Side	11	Assembly Cylinder Pins	5,14,15
1107443 Hose	31	Assembly Open and Close Circuit	5
1107444 Hose	31	Assembly Pivot Group - Left Side	5,8,9
1107445 Hose	31	Assembly Pivot Group - Right Side	5,6,7
1107446 Hose	31	Assembly Rotation	5,20,21,23,25
1107447 Shim Set - Blade	11	Assembly Rotation Circuit - 2nd Member	22,23
1107448 Shim Set - Guide	11	Assembly Rotation Circuit - 3rd Member	24,25
1108183 Mach Bolt Socket Head Capscrew	21	Assembly Slewing Ring Lubrication	5,36,37
1108985 Wldt Cover	17	Assembly Swivel Manifold	5,31,32,33
3100406 Plt Cover Upper Head	19	Assembly Upper Head	5,18,19
3101225 Pinion	21	Bolt Drive Specifications	45
3101226 Mach Washer Motor Pinion	21	Bolt Torque Specifications	39,43
3500831 Mach Pin Keeper Rear	15	Contact Information	2,51
3501246 Mach Pin Keeper	19	F0110030 Hex Head Capscrew M10 x 1.5 x 30	31
3501246 Mach Pin Keeper (Clevis)	15	F0110030 Hex Head Capscrew M10 x 1.50 x 30	19
4500399 Mach Blade Razor	11	F0110035 Hex Head Capscrew M10 x 1.50 x 35	31,38
5510144 Plt Cover Upper Head	19	F0110040 Hex Head Capscrew M10 x 1.50 x 40	38
6100397 Bearing Slewing	21	F0110050 Hex Head Capscrew M10 x 1.50 x 50	31
6200002 Grease Fitting 7,9,13,15,37		F0112040 Hex Head Capscrew M12 x 1.75 x 40	38
6200066 Dowel Pin 7,9		F0112050 Hex Head Capscrew M12 x 1.75 x 50	31,38
6300052 Adaptor 12MB-08MO	23	F0112110 Hex Head Capscrew M12 x 1.75 x 110	23
6300054 Plug Socket Head 08MB	27	F0112110 Hex Head Capscrew M12 X 1.75 X 110	25
6300061 Pilot to Close Check Valve	35	F0114050 Hex Head Capscrew M14 x 2.00 x 50	38

INDEX

- F0116035 Hex Head Capscrew M16 x 2.0 x 35 33
- F0120090 Hex Head Capscrew M20 x 2.50 x 90 21
- F0238100 Hex Head Capscrew $\frac{3}{8}$ - 16 x 1 21
- F0275150 Hex Head Capscrew $\frac{3}{4}$ - 10 x 1 $\frac{1}{2}$ 11
- F0275300 Hex Head Capscrew $\frac{3}{4}$ - 10 x 3 13
- F0575300 Flat Head Capscrew $\frac{3}{4}$ - 10 x 3 11
- F0575350 Flat Head Capscrew $\frac{3}{4}$ - 10 x 3 $\frac{1}{2}$ 11
- F0575450 Hex Head Capscrew $\frac{3}{4}$ - 10 x 4 $\frac{1}{2}$ 11
- F0612070 Socket Head Capscrew M12 x 1.75 x 70 15,19
- F0616035 Socket Head Capscrew M16 x 2 x 35 31
- F0616150 Socket Head Capscrew M16 x 2.00 x 150 15
- F0620040 Socket Head Capscrew M20 x 2.50 x 40 7,9
- F0775300 Socket Head Capscrew $\frac{3}{4}$ - 10 x 3 11
- F0907510 Hex Nut $\frac{3}{4}$ - 10 11
- F1012175 Nylock Hex Nut M12 x 1.75 15,19
- F1016200 Nylock Hex Nut M16 x 2.00 15
- F1201021 Flat Washer M10 19
- F1201021 Flat Washer M19 19
- F1201224 Flat Washer M12 23,25
- F1201630 Flat Washer M16 31
- F1300075 Flat Washer Narrow $\frac{3}{4}$ 11,13
- F1401000 Lock Washer M10 31,38
- F1401200 Lock Washer M12 31,38
- F1401400 Lock Washer M14 38
- F1900040 Washer Nord Lock 31
- F1900050 Washer Nord Lock 21
- F1900063 Washer Nord Lock 33
- F2575075 Set Screw Socket Head $\frac{3}{4}$ - 10 x $\frac{3}{4}$ 11
- F3616020 Socket Head Shoulder Bolt M16 x 2 x 20 31
- General Arrangement 4,5
- H0261100 Split Flange Half 1.00 Code 61 31,38
- H0262100 Split Flange Half 1.00 Code 62 31,38
- H0262125 Split Flange Half 1.25 Code 62 31,38
- Line Mount Manifold 22
- Mach Auto Guide 13
- Mach Main Shaft 9
- O-Ring Boss & Flat Face O-Ring Torque Specifications 44
- Parts Order Form 48
- Parts Order Policy and Procedure 47
- Procedures 41,42
- Regen Block Sub-Assembly - 6360022 34,35
- Rotate Cross-over / C'bal 22
- Rotator Installation 22
- S0190219 O-Ring 31,38
- S0190222 O-Ring 31,38
- S0190262 O-Ring 7,9
- Seal Kit 6300622 34,35
- Seal Kit 6300624 34,35
- Seal Kit 6300633 26,27
- Seal Kit 6300634 28,29
- Seal Kit SK00024 34,35
- Seal Kit SK00058 26,27
- Seal Kit SK00125 34,35
- Seal Kit SK00188 35
- Split Flange Kits Used in This Manual 38
- Sub-Assembly Line Mount Manifold 23,25,28,29
- Sub-Assembly Rotate Cross-over / C'bal 23,25,26,27
- Table of Contents 3
- Thread Treatment Diagram 40
- Torque Arm Kit 33
- Valve Regen 31
- Warranty 46
- Wldt Pin 19
- Wtmg Upper Head 19



GENESIS®

The Promise of Performance.

CONTACT INFORMATION

Genesis Attachments

1000 Genesis Drive
Superior, WI 54880 USA

Toll Free: 888-SHEAR-IT
(888-743-2748)

Phone: 715.395.5252
Fax: 715.395.5255

E-mail:
info@genesisattachments.com

Europe/Africa/Middle East Genesis GmbH

Teramostrasse 23
87700 Memmingen, Germany

Phone: +49 83 31 9 25 98 0
Fax: +49 83 31 9 25 98 80
genesis-europe.com

E-mail:
info@genesis-europe.com

Asia Pacific Representative Office

24 Upper Serangoon View #12-28
Singapore 534205

Phone: +65 9673 9730

E-mail:
tchoo@genesisattachments.com

Central America & Colombia

Cra 13A #89-38 / Ofi 613
Bogota, Colombia

Phone: +57 1 610 8160 / 795 8747

E-mail:
contact@themsagroup.com

View and download all manuals: genesisattachments.com/manuals
Patents: genesisattachments.com/products/patents