



GRB 30 Rail Breaker

PARTS MANUAL



CONTACT INFORMATION

Genesis Attachments

1000 Genesis Drive
Superior, WI 54880 USA

Toll Free: 888-SHEAR-IT
(888-743-2748)

Phone: 715.395.5252

E-mail:
info@genesisattachments.com

Europe/Africa/Middle East Genesis GmbH

Teramostrasse 23
87700 Memmingen, Germany

Phone: +49 83 31 9 25 98 0
Fax: +49 83 31 9 25 98 80
genesis-europe.com

E-mail:
info@genesis-europe.com

Asia Pacific Representative Office

24 Upper Serangoon View #12-28
Singapore 534205

Phone: +65 9673 9730

E-mail:
tchoo@genesisattachments.com

Central America & Colombia

Cra 13A #89-38 / Ofi 613
Bogota, Colombia

Phone: +57 1 610 8160 / 795 8747

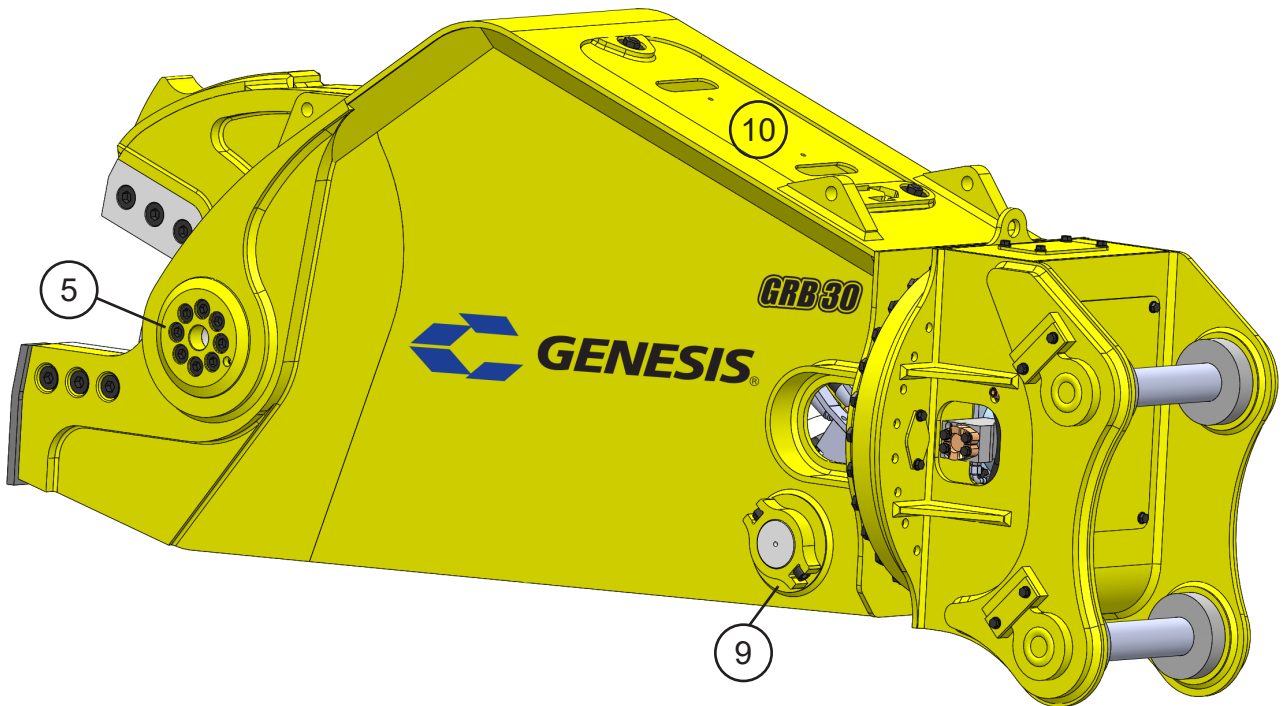
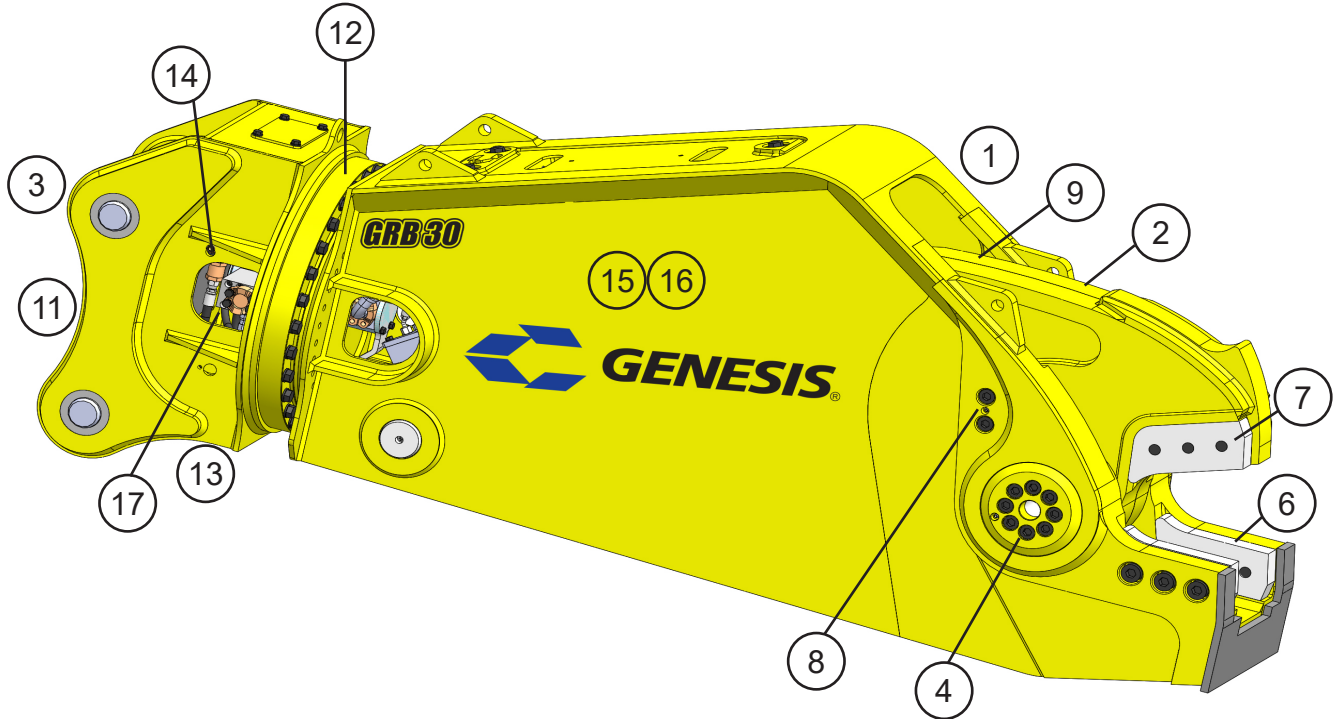
E-mail:
contact@themsagroup.com

View and download all manuals: genesisattachments.com/manuals
Patents: genesisattachments.com/products/patents

TABLE OF CONTENTS

CONTACT INFORMATION	2
GENERAL ARRANGEMENT	4
ASSEMBLY PIVOT GROUP - RIGHT SIDE	6
ASSEMBLY PIVOT GROUP - LEFT SIDE	8
ASSEMBLY LOWER BLADES	10
ASSEMBLY UPPER BLADES	12
ASSEMBLY AUTO GUIDE	14
ASSEMBLY CYLINDER PINS	16
ASSEMBLY ACCESS COVERS	18
ASSEMBLY UPPER HEAD - STANDARD	20
ASSEMBLY LUGS	22
ASSEMBLY SUB-HEAD/ROTATION - 1107983 / 1107986	24
SUB-ASSEMBLY LINE MOUNT MANIFOLD	26
VALVE ROTATE CROSSOVER/C'BAL	28
ASSEMBLY ROTATION CIRCUIT - 1108151 / 1108160	30
SUB-ASSEMBLY LINE MOUNT MANIFOLD - 6301242	32
ROTATION RELEASE MANIFOLD - 6360104	34
ASSEMBLY CYLINDER 6350085 - B10.0 R7.0 S21.25	36
ASSEMBLY CYLINDER PACKING KIT	38
ASSEMBLY HYDRAULIC	40
ASSEMBLY SWIVEL MANIFOLD - 6350185	42
ASSEMBLY SWIVEL MANIFOLD SEALS	44
SPLIT FLANGE KITS USED IN THIS MANUAL	46
BOLT TORQUE SPECIFICATIONS	47
THREAD TREATMENT DIAGRAM	48
Mobile Shears.....	48
PROCEDURES	49
Cleaning.....	49
Threadlocker.....	49
Anti-Seize.....	50
No Thread Treatment.....	50
BOLT TORQUE SPECIFICATIONS	51
Dry Torque Values.....	51
Wet Torque Values.....	51
O-RING BOSS & FLAT FACE O-RING TORQUE SPECIFICATIONS	52
BOLT DRIVE SPECIFICATIONS	53
WARRANTY	54
Claim Procedure.....	54
Blade Warranty.....	54
PARTS ORDER POLICY AND PROCEDURE	55
Parts Orders Should Include.....	55
Placing Orders.....	55
Part Numbers.....	55
Shipping.....	55
Invoices.....	55
Returns.....	55
Warranty Returns.....	55
PARTS ORDER FORM	56
INDEX	57
CONTACT INFORMATION	60

GENERAL ARRANGEMENT



GENERAL ARRANGEMENT

ITEM	QTY	PART NUMBER	DESCRIPTION
1	1	1107879	Wtmg Stick
2	1	1107865	Wtmg Upper
3		*	Wtmg Lug Upper Head - 5515649
4		See page 6	Assembly Pivot Group - Right Side
5		See page 8	Assembly Pivot Group - Left Side
6		See page 10	Assembly Lower Blades
7		See page 12	Assembly Upper Blades
8		See page 14	Assembly Auto Guide
9		See page 16	Assembly Cylinder Pins
10		See page 18	Assembly Access Covers
11		See page 20	Assembly Upper Head
12		See page 24 & page 30	Assembly Sub-Head/Rotation
13		See page 28	Valve Rotate Crossover/C'bal
		See page 34	Rotation Release Manifold
14		See page 26 & page 32	Sub-Assembly Line Mount Manifold
15		See page 36	Assembly Cylinder
16		See page 38	Assembly Cylinder Packing Kit
17		See page 42	Assembly Swivel Manifold

* Part number is Serial Number specific. For replacement parts call the Genesis Parts Department.

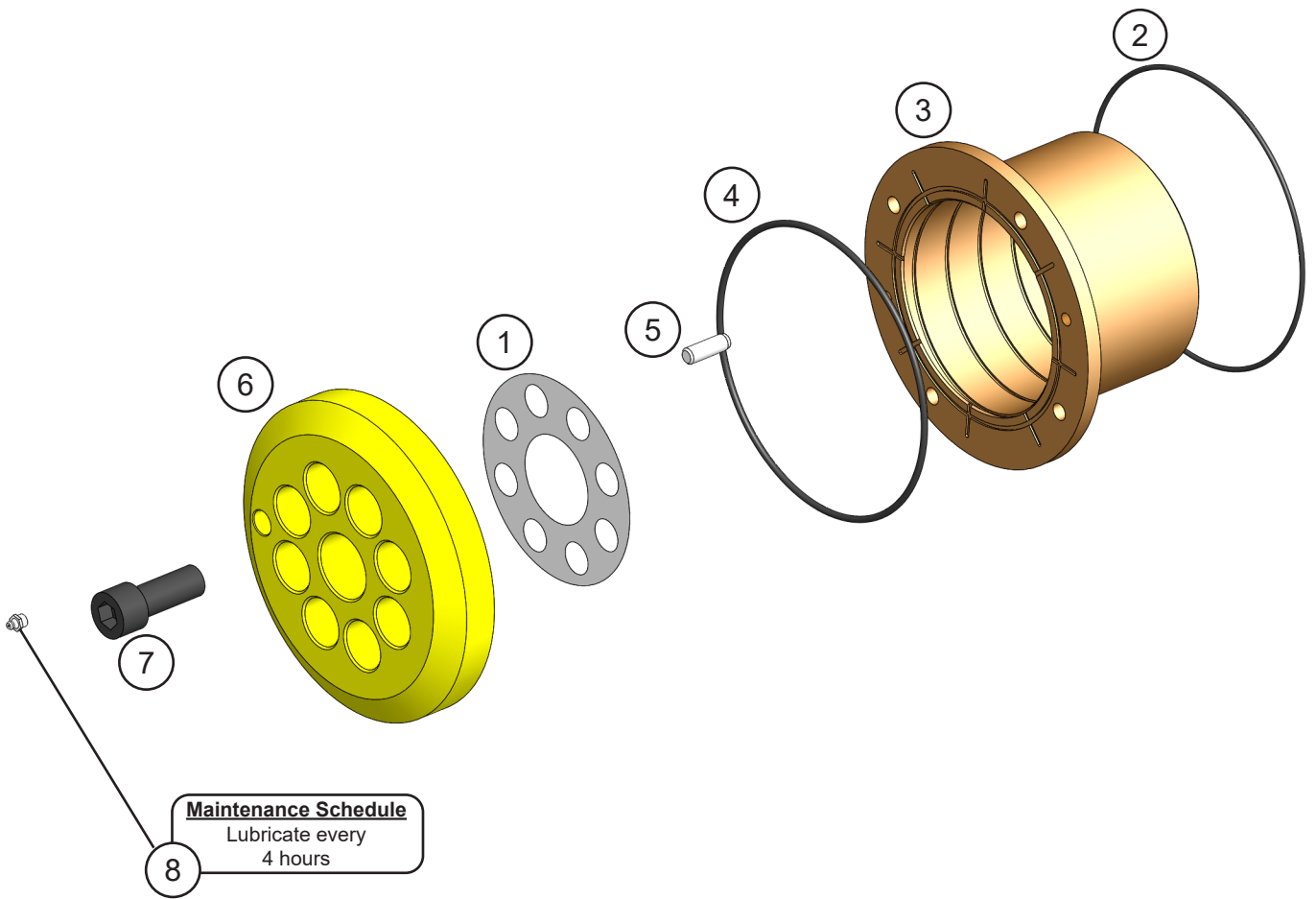
USA

715-395-3488

Europe

+49 83 31 9 25 98 0

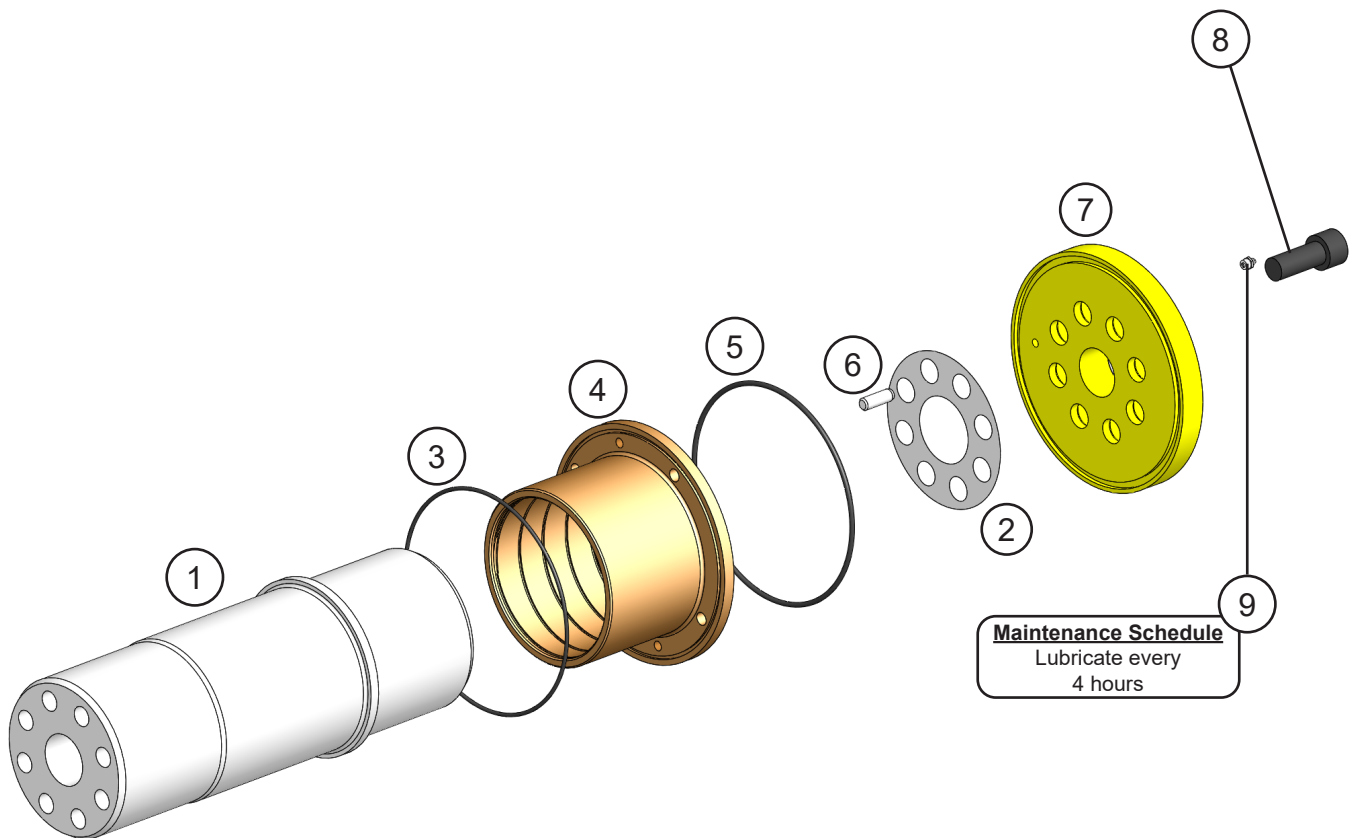
ASSEMBLY PIVOT GROUP - RIGHT SIDE



ASSEMBLY PIVOT GROUP - RIGHT SIDE

ITEM	QTY	PART NUMBER	DESCRIPTION
1	1	3500360	Shim Set Main Shaft
2	1	S0190270	O-Ring
3	1	1107909	Mach Bearing LH/RH
4	1	S0190372	O-Ring
5	2	6300134	Dowel Pin
6	1	3501099	Mach End Cap
7	8	F0624060	Socket Head Capscrew M24 x 3.00 x 50
8	1	6200002	Grease Fitting

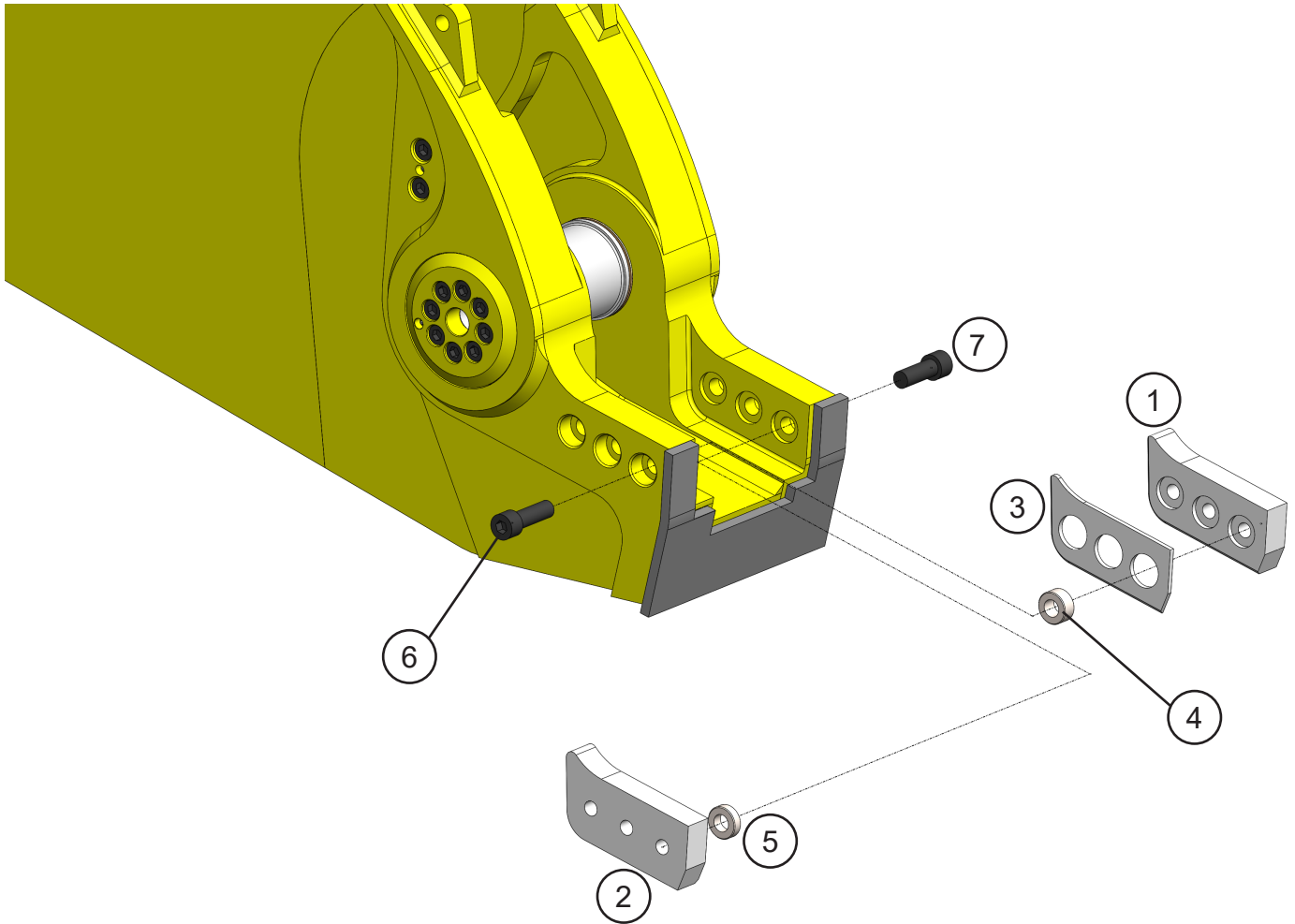
ASSEMBLY PIVOT GROUP - LEFT SIDE



ASSEMBLY PIVOT GROUP - LEFT SIDE

ITEM	QTY	PART NUMBER	DESCRIPTION
1	1	1107908	Mach Main Shaft
2	1	3500360	Shim Set Main Shaft
3	1	S0190270	O-Ring
4	1	1107909	Mach Bearing LH/RH
5	1	S0190372	O-Ring
6	2	6300134	Dowel Pin
7	1	3501099	Mach End Cap
8	8	F0624060	Socket Head Capscrew M24 x 3.00 x 50
9	1	6200002	Grease Fitting

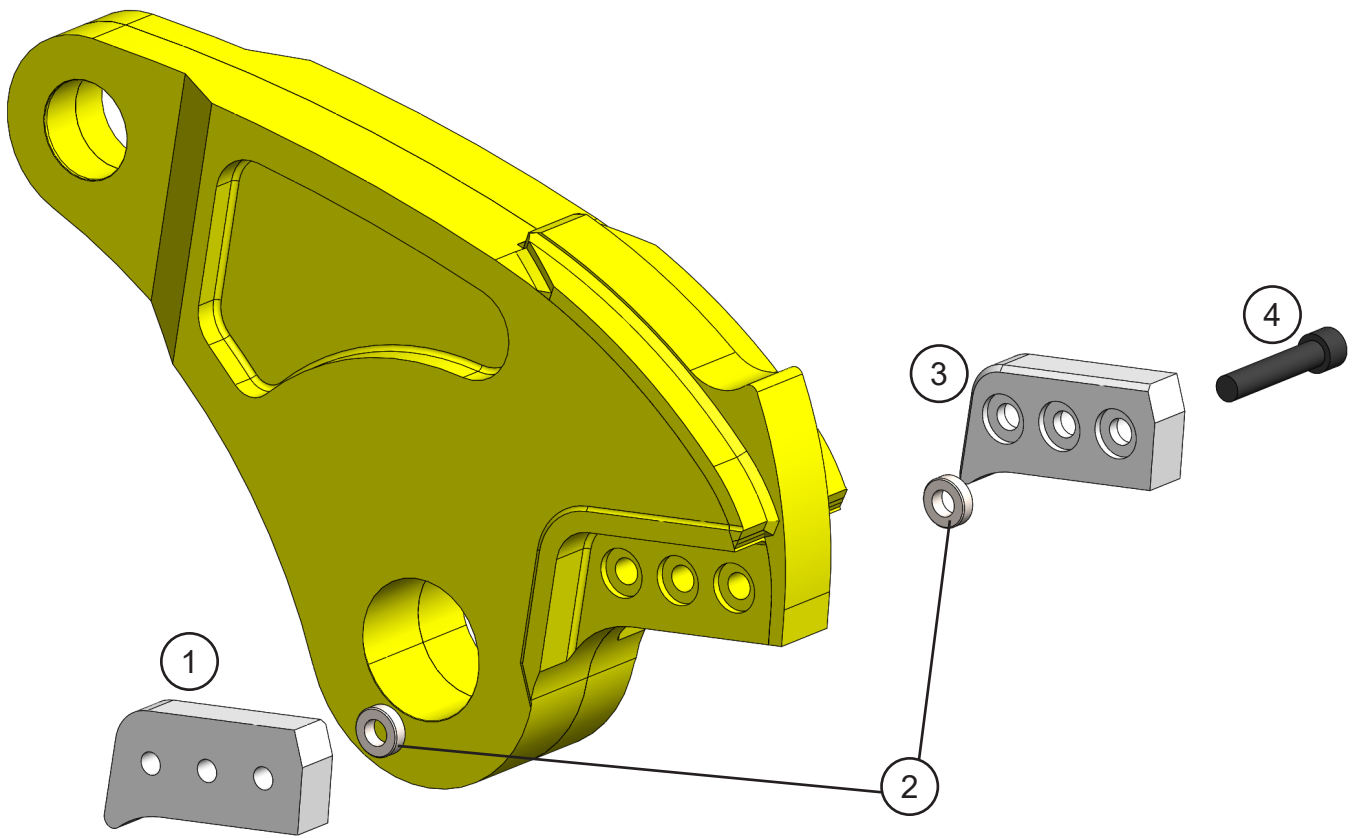
ASSEMBLY LOWER BLADES



ASSEMBLY LOWER BLADES

ITEM	QTY	PART NUMBER	DESCRIPTION
1	1	1107914	Mach Blade
2	1	1107916	Mach Blade Lower Guide
3	1	1107918	Mach Adjust Plate
4	3	1107912	Mach Fuse 1.125 Lg
5	3	1107911	Mach Fuse 0.75 Lg
6	3	F0712450	Socket Head Capscrew 1¼ - 7 x 4½
7	3	F0712350	Socket Head Capscrew 1¼ - 7 x 3½

ASSEMBLY UPPER BLADES



ASSEMBLY UPPER BLADES

ITEM	QTY	PART NUMBER	DESCRIPTION
1	1	1107914	Mach Blade
2	6	1107911	Mach Fuse 0.75 Lg
3	1	1107915	Mach Blade Upper Guide
4	3	F0712650	Socket Head Capscrew 1¼ - 7 x 6½

ASSEMBLY AUTO GUIDE

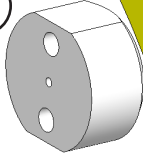
Maintenance Schedule
Lubricate every
4 hours

3

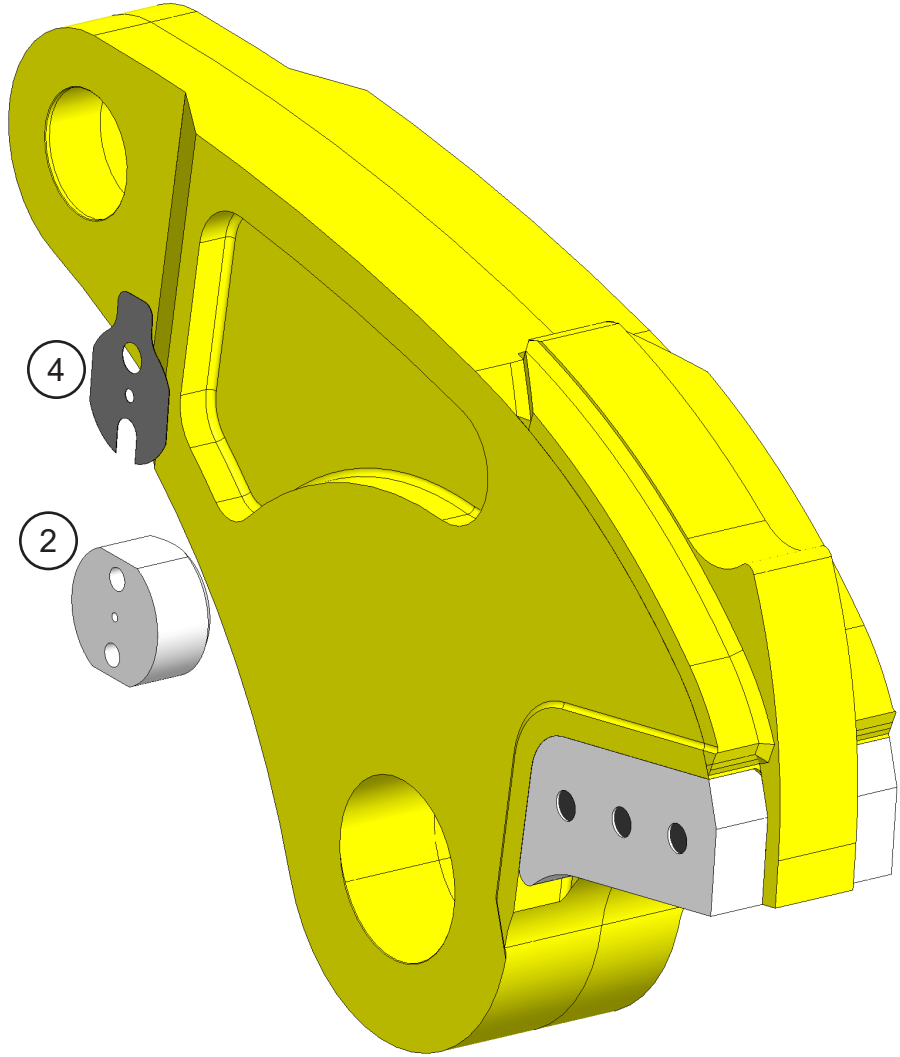


1

2



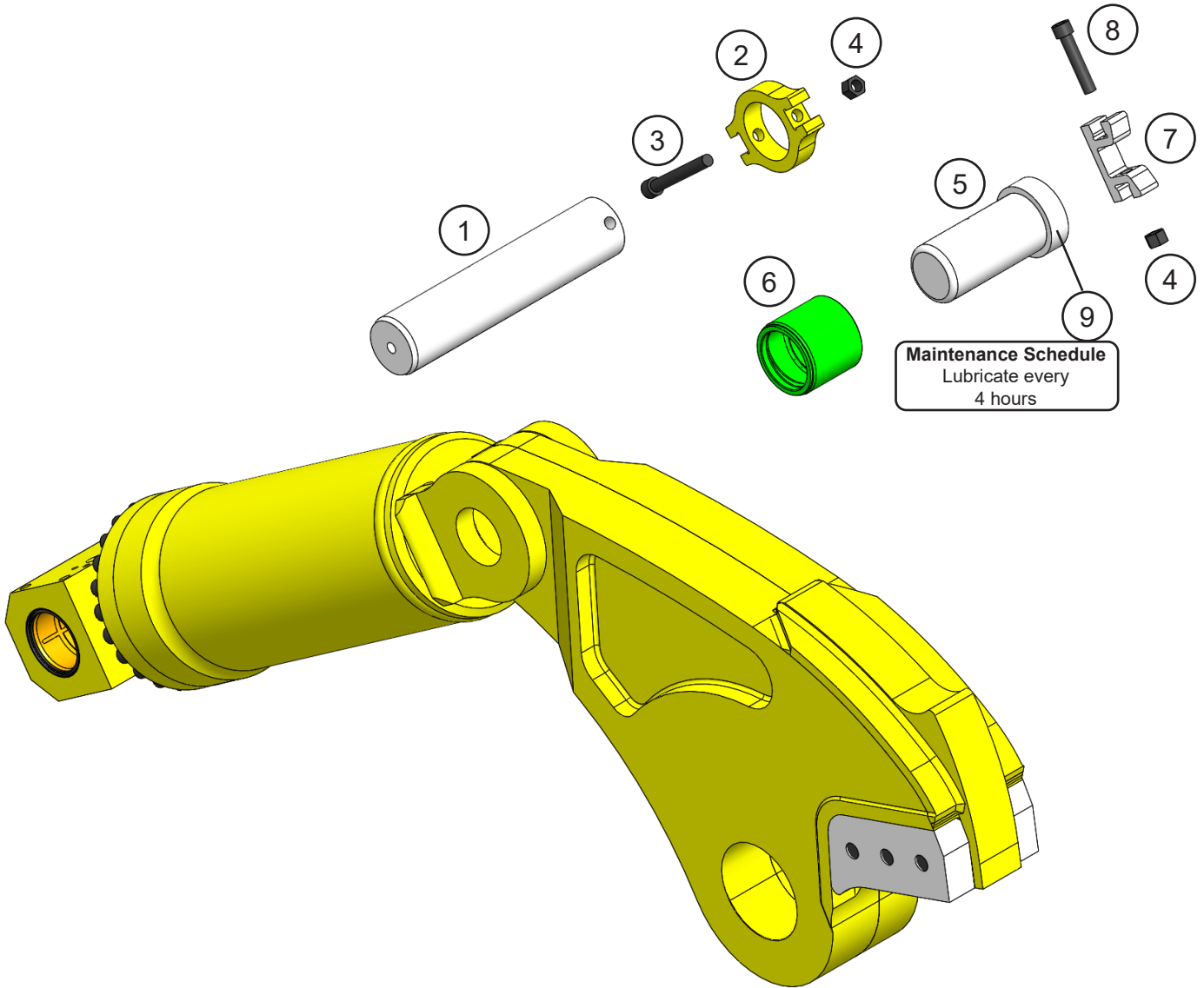
4



ASSEMBLY AUTO GUIDE

ITEM	QTY	PART NUMBER	DESCRIPTION
1	2	F0710400	Socket Head Capscrew 1 - 8 x 4½
2	1	1105992	Mach Auto Guide
3	1	6200002	Grease Fitting
SHIM SET			
4	1	1106478	Shim Set, Auto Guide

ASSEMBLY CYLINDER PINS

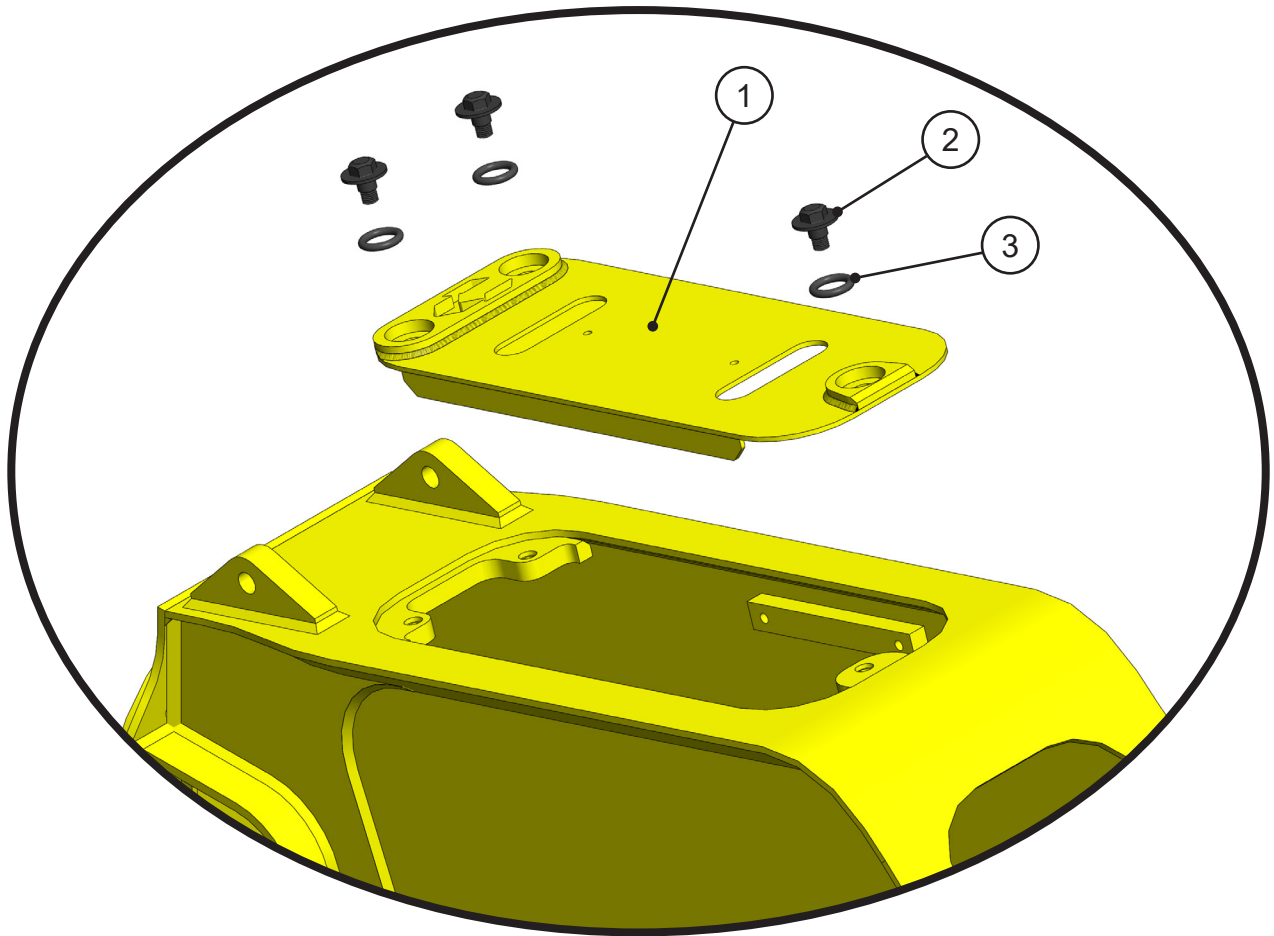


Maintenance Schedule
Lubricate every
4 hours

ASSEMBLY CYLINDER PINS

ITEM	QTY	PART NUMBER	DESCRIPTION
1	1	1107910	Mach Rear Cyl Pin
2	1	3500310	Mach Pin Keeper Rear
3	1	F0620160	Socket Head Capscrew M20 x 2.50 x 160
4	2	F1020250	Nylock Hex Nut M20 x 2.50
5	1	3500345	Wldt Front Cyl Pin
6	1	1105456	Mach Bearing Upper Cylinder Connection
7	1	3500350	Mach Pin Keeper (Clevis)
8	1	F0620100	Socket Head Capscrew M20 x 2.50 x 100
9	1	6200002	Grease Fitting

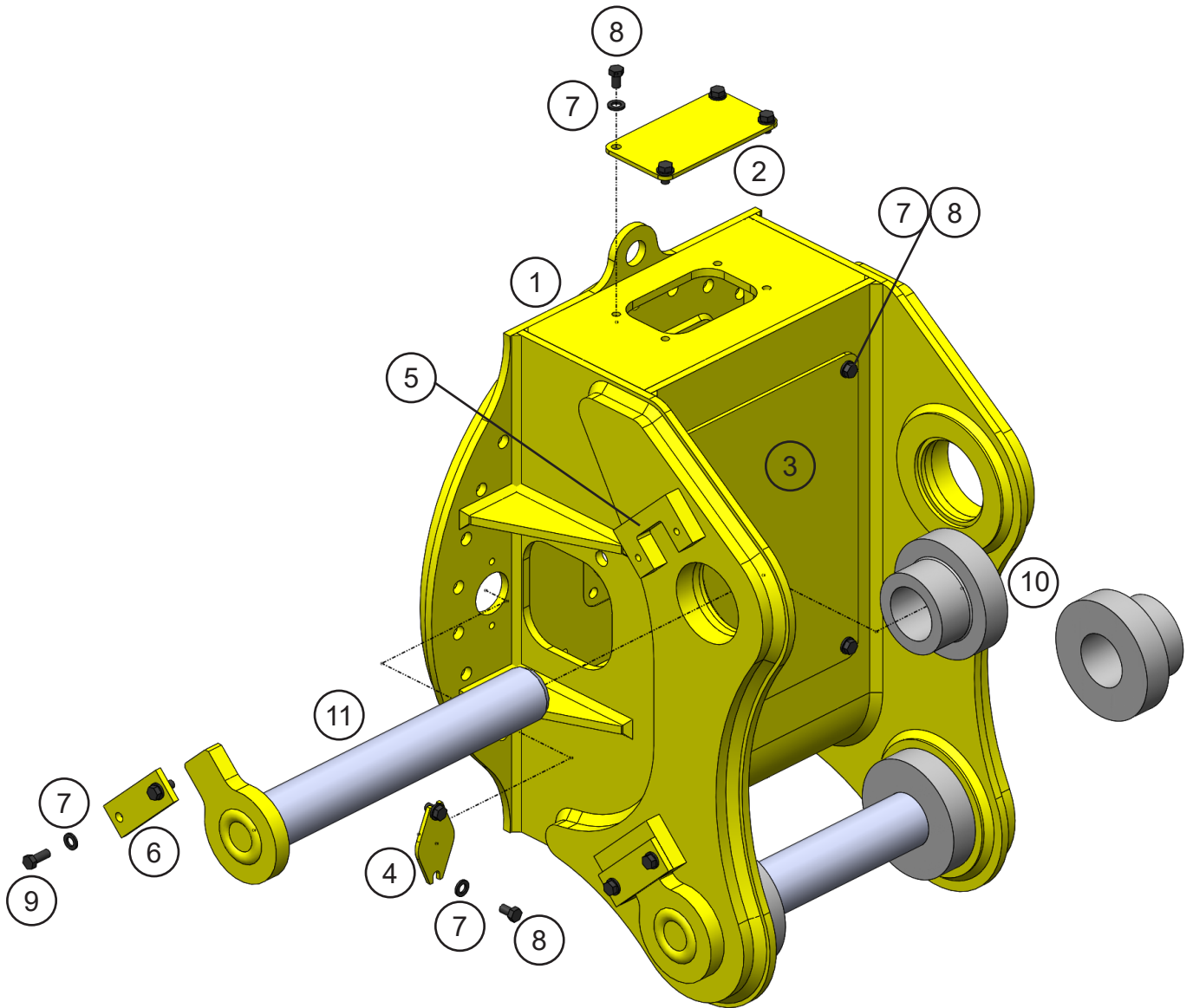
ASSEMBLY ACCESS COVERS



ASSEMBLY ACCESS COVERS

ITEM	QTY	PART NUMBER	DESCRIPTION
1	1	1107919	Wldt Cover
2	3	1105854	Mach Flange Shoulder Bolt
3	3	6301112	O-Ring

ASSEMBLY UPPER HEAD - STANDARD



ASSEMBLY UPPER HEAD - STANDARD

ITEM	QTY	PART NUMBER	DESCRIPTION
1	1	5515649	Wtmg Sub-Head
2	2	5515676	Plt Cover Sub-Head Small
3	1	5515677	Plt Cover Sub-Head Large
4	2	5515816	Plt Cover Sub-Head
5	2	5500785	Mach Pin Keeper
6	2	5500752	Bar Strap
7	20	F1201224	Flat Washer M12
8	16	F0112020	Hex Head Capscrew M12 x 1.75 x 20
9	4	F0112030	Hex Head Capscrew M12 x 1.75 x 30
10	*	**	Mach Spacer Sleeve
11	*	**	Wldt Pin

* Quantity is dependent upon the bracket.

** Part numbers are Serial Number specific. For replacement parts call the Genesis Parts Department.

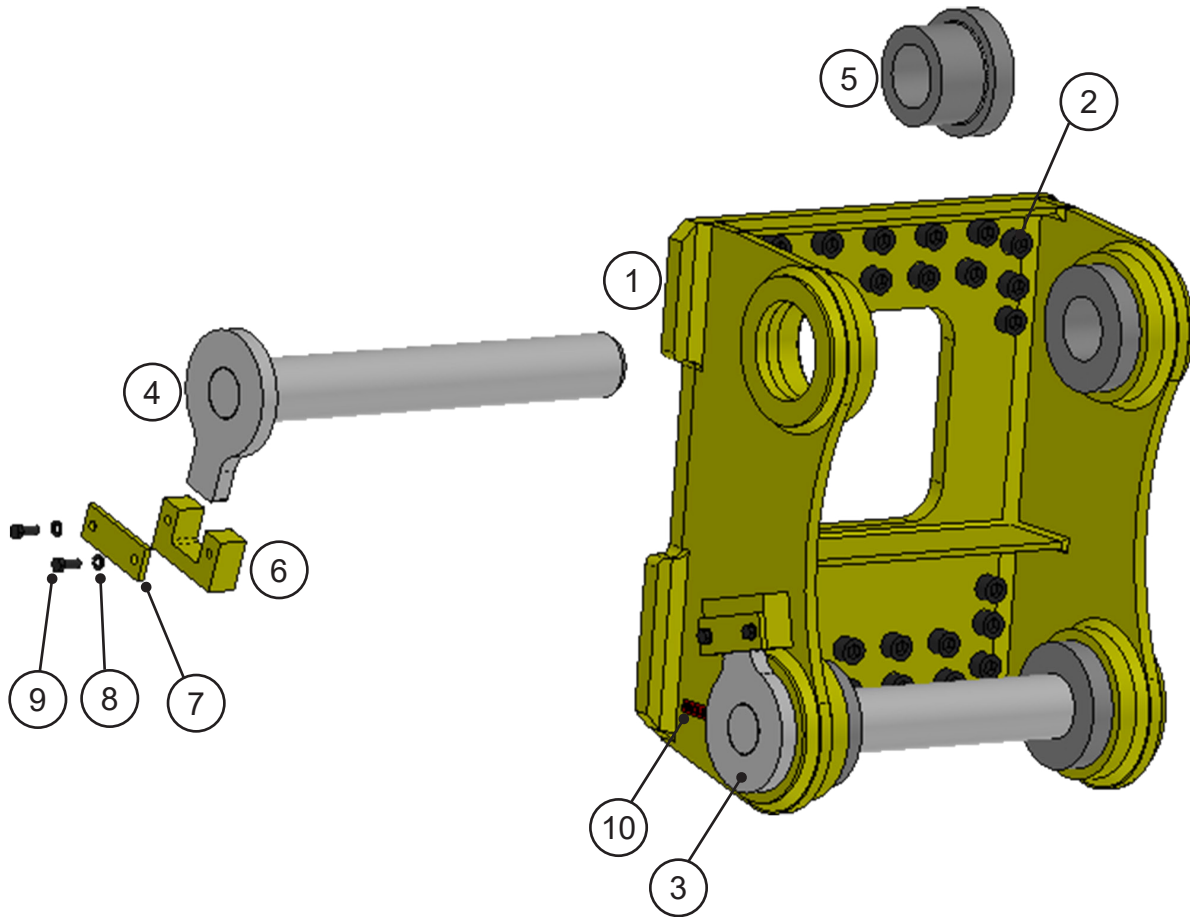
USA

715-395-3488

Europe

+49 83 31 9 25 98 0

ASSEMBLY LUGS



ASSEMBLY LUGS

ITEM	QTY	PART NUMBER	DESCRIPTION
1	1	**	Wtmg Lugs
2	*	**	Bracket Fasteners
3	1	**	Wldt Stick Pin
4	1	**	Wldt Link Pin
5	*	**	Mach Spacer Sleeve
6	2	**	Mach Pin Keeper
7	2	**	Bar Strap
8	4	**	Washer
9	4	**	Hex Head Capscrew
10	1	**	Stick Pin Decal

* Quantity is dependent upon the bracket.

** Part numbers are Serial Number specific. For replacement parts call the Genesis Parts Department.

USA

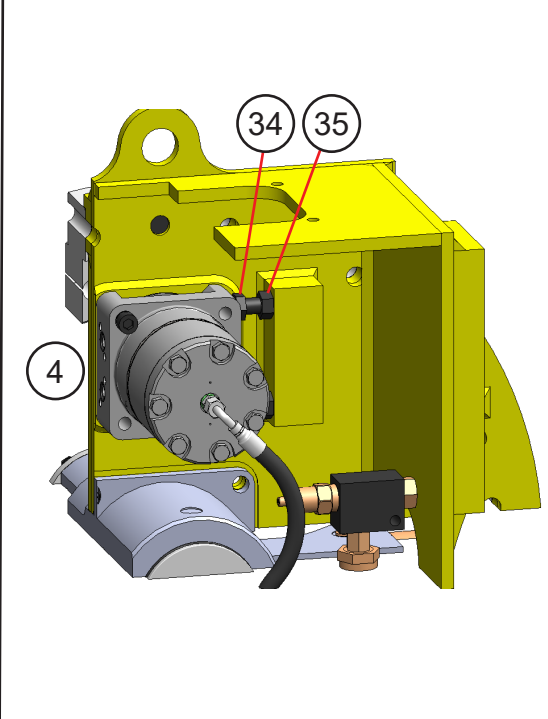
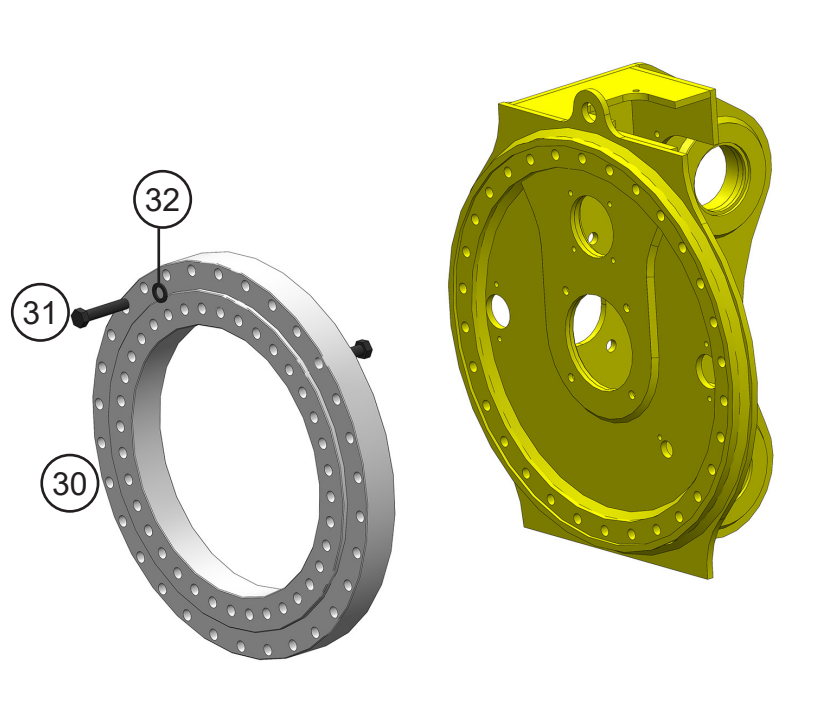
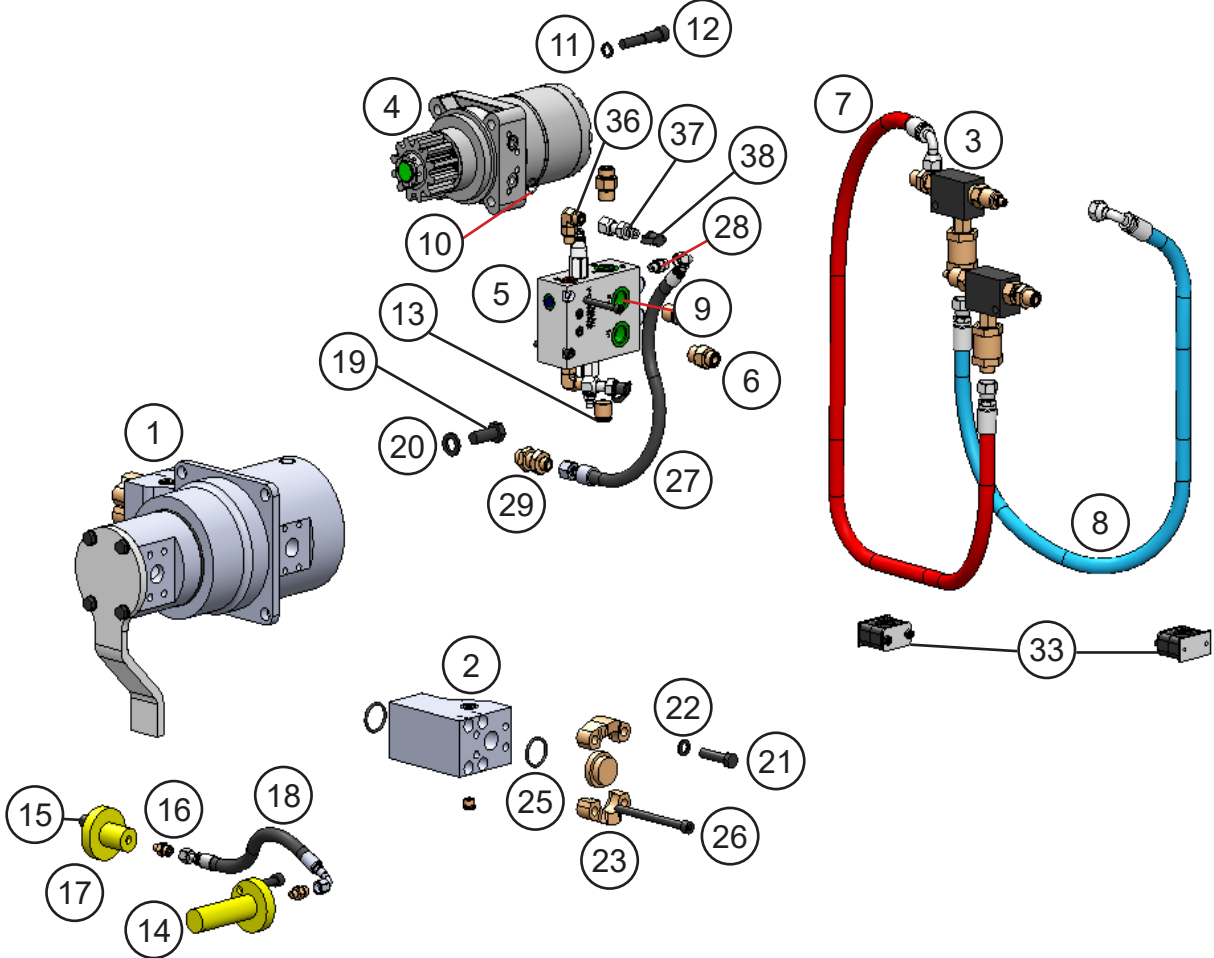
715-395-3488

Europe

+49 83 31 9 25 98 0

ASSEMBLY SUB-HEAD/ROTATION - 1107983 / 1107986

The GRB will have this sub-head/rotation or rotation circuit 1108151 / 1108160, see page 30.



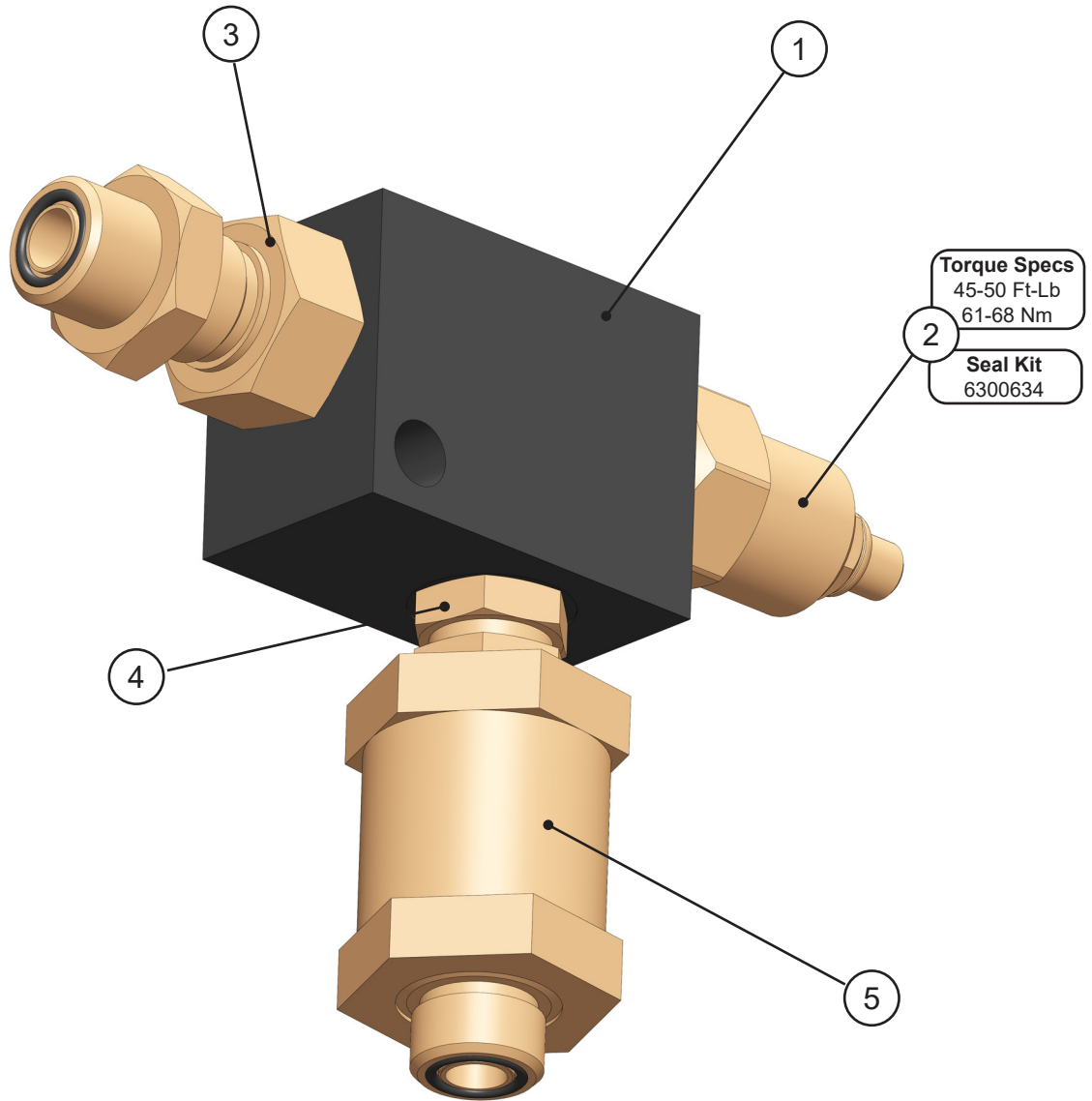
ASSEMBLY SUB-HEAD/ROTATION - 1107983 / 1107986

ITEM	QTY	PART NUMBER	DESCRIPTION
1	1	6350185	Assy Swivel Manifold
2	2	3502323	Mach Port Block
3	2	6301202	Flow Control Sub-Assy
4	1	6380102	Motor Manifold Assy
5	1	6360102	Valve Rotate Cross-over / C'bal
6	2	6300149	Adapter 10MB-08MO
7	1	1107984	Hose
8	1	1107985	Hose
9	4	F0608060	Socket Head Capscrew M8 x 1.25 x 60
10	2	S0190015	O-Ring
11	4	F1900050	Washer
12	4	1108011	Mach Bolt Socket Head Capscrew
13	2	6300077	Plug Socket Head 10MB
14	1	5512419	Mach Slewing Ring Grease Adapter
15	2	F0610025	Socket Head Capscrew M10 x 1.50 x 25
16	2	6300731	Adapter 02MP-04MO
17	1	5512411	Mach Grease Bulkhead Adapter
18	1	3502034	Hose
19	4	F0116040	Hex Head Capscrew M16 x 2.0 x 40
20	4	F1201630	Flat Washer M16
21	8	F0112050	Hex Head Capscrew M12 x 1.75 x 50
22	8	F1401200	Lock Washer M12
23	4	H0262100	Split Flange Half 1.0 Code 62
24	2	H0362100	Split Flange Plug 1.0
25	4	S0190219	O-Ring
26	8	F0610130	Socket Head Capscrew M10 x 1.50 x 130
27	1	1107998	Hose
28	1	6300770	Adapter
29	1	6300023	Adapter Bulkhead 08MO-06MO
30	1	6100092	Bearing Slewing Ring
31	66	F0120100	Hex Head Capscrew M20 x 2.5 x 100
32	66	F1202037	Flat Washer M20
33	1	6370006	Clamp 0.75 Pipe Single Hose
34	2	F0116060*	Hex Head Capscrew M16 x 2.0 x 60
35	2	F0816200*	Hex Nut M16 x 2.0
36	1	6310041	Adapter 06MFFOR-06MB-90
37	1	6310051	Diagnostic Nipple
38	1	6310001	Diagnostic Nipple Dust Cap

* Part numbers apply to GRBs with Serial Number 301015 and above.

SUB-ASSEMBLY LINE MOUNT MANIFOLD

For use with Assembly Sub-Head/Rotation - 1107983 / 1107986.

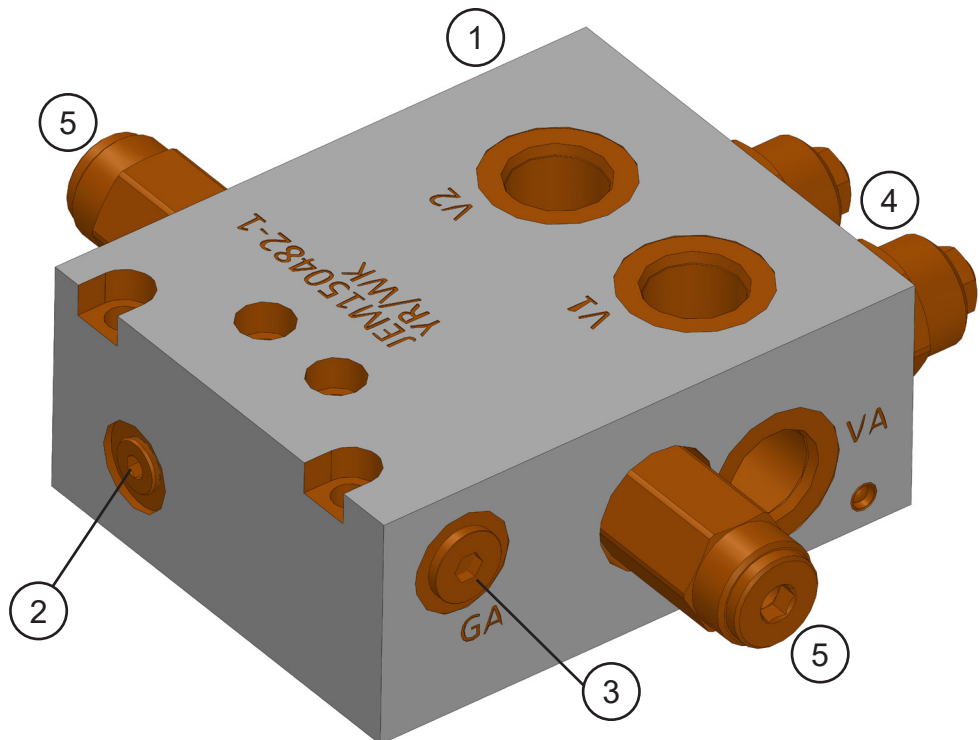
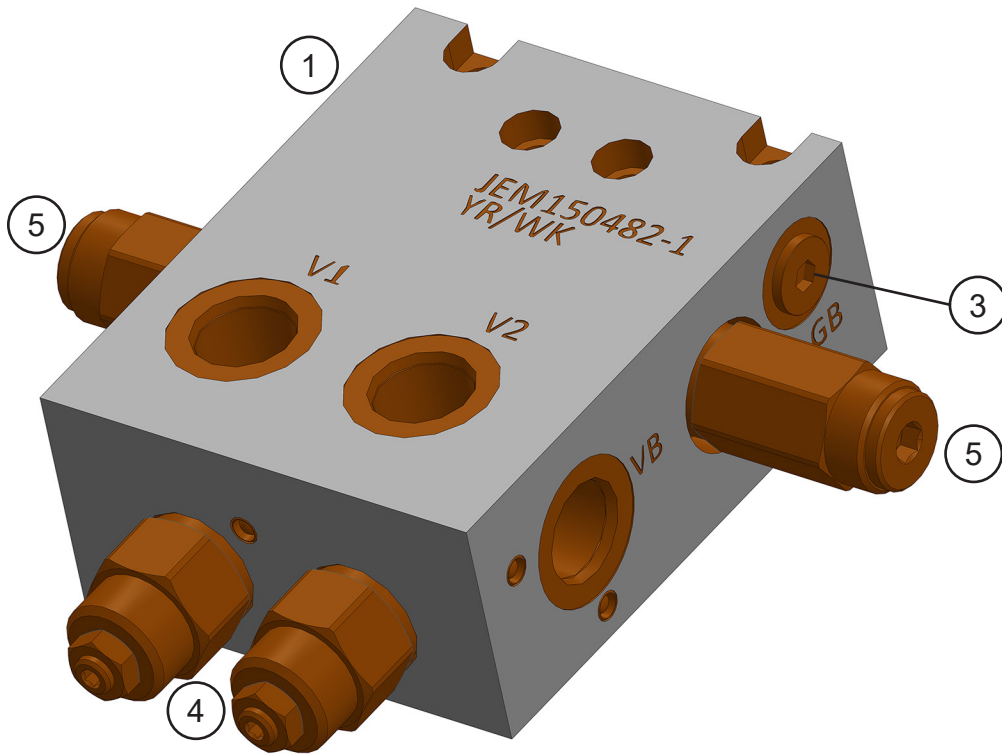


SUB-ASSEMBLY LINE MOUNT MANIFOLD

ITEM	QTY	PART NUMBER	DESCRIPTION
1	1	6300609	Valve Line Body
2	1	6300361	Valve Flow Control Seal Kit 6300634
3	1	6300497	Adaptor Bulkhead 08MB-08MO
4	1	6300523	Adaptor 08MB-08MB
5	1	6300364	Filter

VALVE ROTATE CROSSOVER/C'BAL

For use with Assembly Sub-Head/Rotation - 1107983 / 1107986.

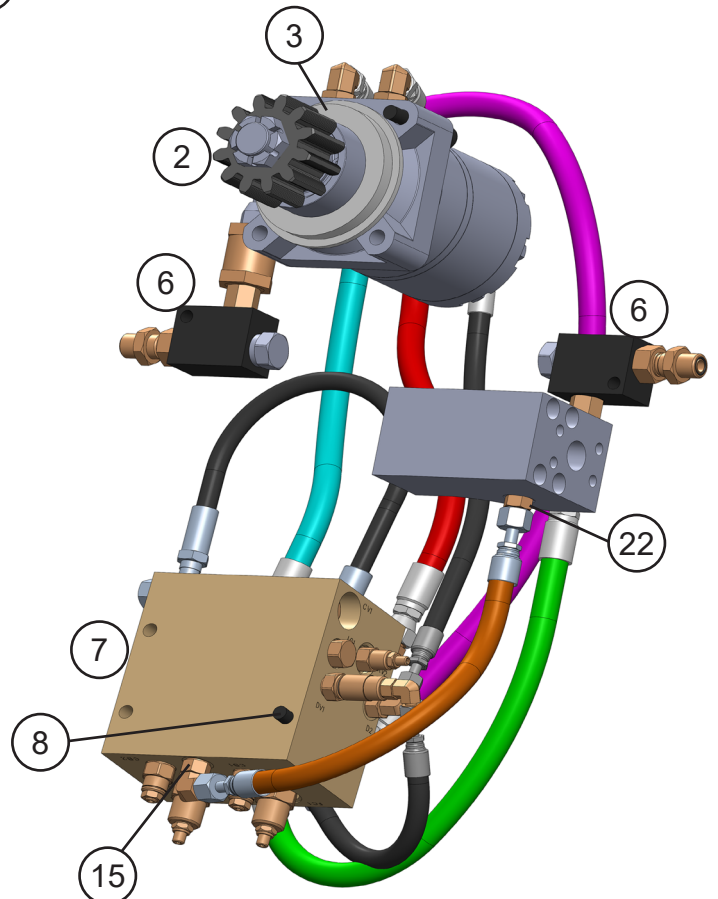
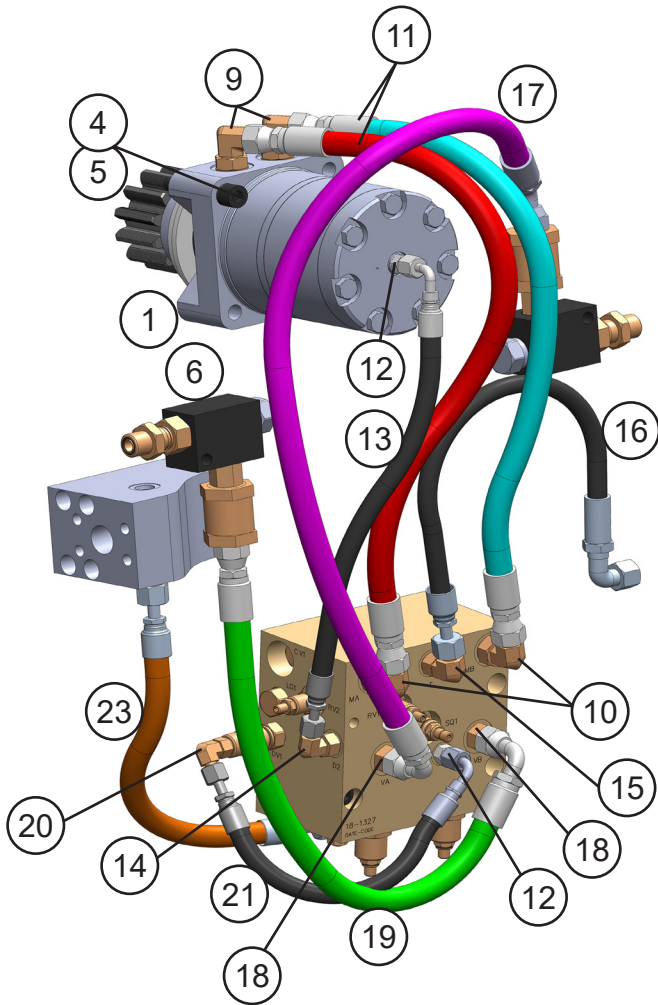


VALVE ROTATE CROSSOVER/C'BAL

ITEM	QTY	PART NUMBER	DESCRIPTION	
1	1	6360095	Manifold Block	Seal Kit SK00220
2	1	6300076	Zero Leak Plug SAE-04	
3	2	6300153	Zero Leak Plug SAE-06	
4	2	6360096	Counterbalance Valve	Seal Kit SK00002
5	2	6301665	Relief Valve	Seal Kit SK00236

ASSEMBLY ROTATION CIRCUIT - 1108151 / 1108160

The GRB will have this sub-head/rotation or rotation circuit 1107983 / 1107986, see page 24.

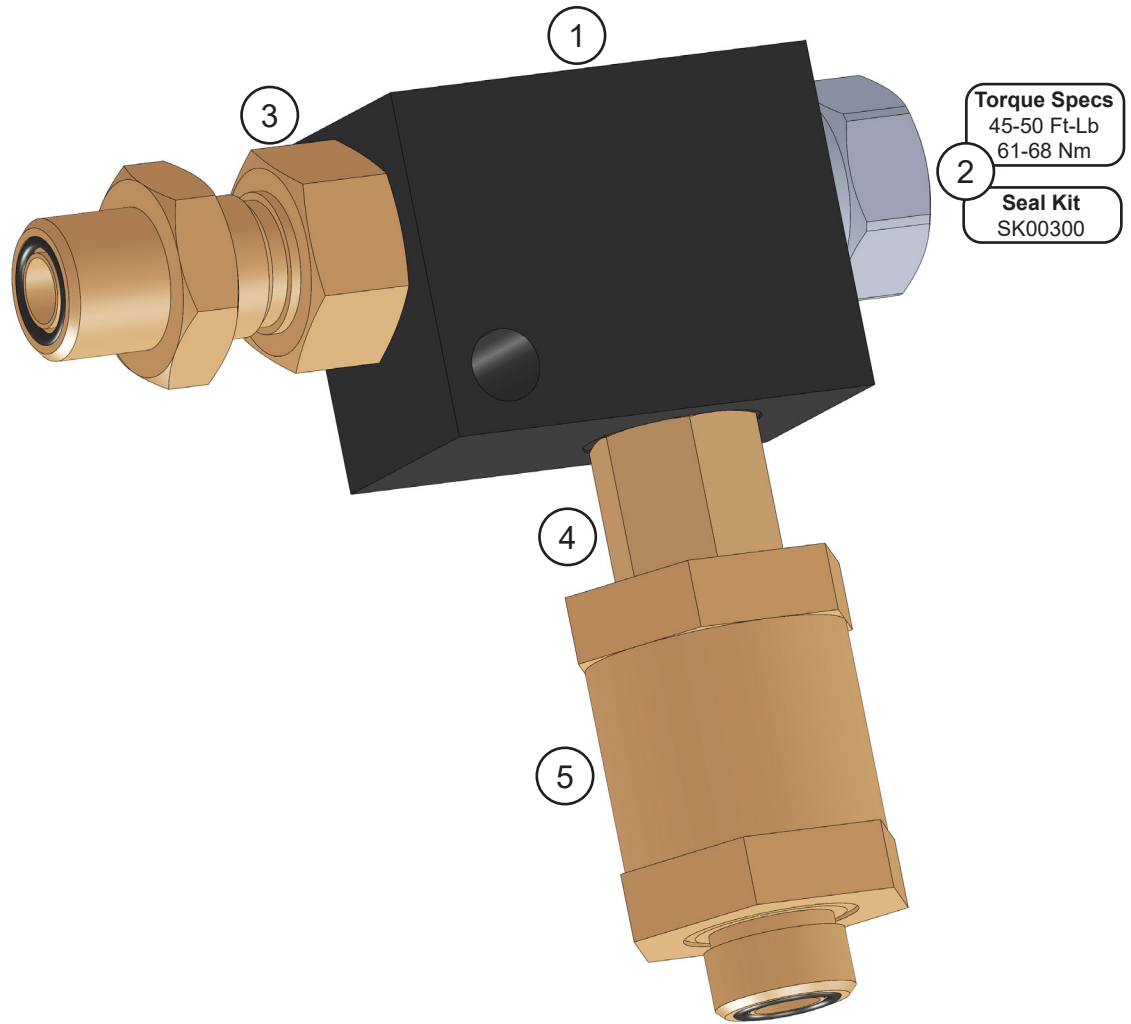


ASSEMBLY ROTATION CIRCUIT - 1108151 / 1108160

ITEM	QTY	PART NUMBER	DESCRIPTION
1	1	6380100	Motor
2	1	3502192	Pinion Motor
3	1	3501835	Mach Spacer 3.25 x 0.688, 5.0 x 0.20
4	4	1108011	Mach Bolt Socket Head Capscrew
5	4	F1900050	Washer
6	2	6301242	Flow Control
7	1	6360104	Manifold Rotation Release
8	3	F0612090	Socket Head Capscrew
9	2	6300305	Adapter
10	2	6300303	Adapter
11	2	1108153	Hose
12	2	6300770	Adapter
13	1	1108154	Hose
14	1	6310105	Adapter
15	2	6310041	Adapter
16	1	1108155	Hose
17	1	1108156	Hose
18	2	6310050	Adapter
19	1	1108157	Hose
20	1	6300768	Adapter
21	1	1108158	Hose
22	1	6300018	Adapter
23	1	1108159	Hose
24	1	6100092	Bearing Slewing Ring
25	66	F0120100	Hex Head Capscrew M20 x 2.5 x 100
26	66	F2802000	Washer M20
27	1	5512419	Mach Slewing Ring Grease Adapter

SUB-ASSEMBLY LINE MOUNT MANIFOLD - 6301242

For use with Assembly Sub-Head/Rotation - 1108151/ 1108160.

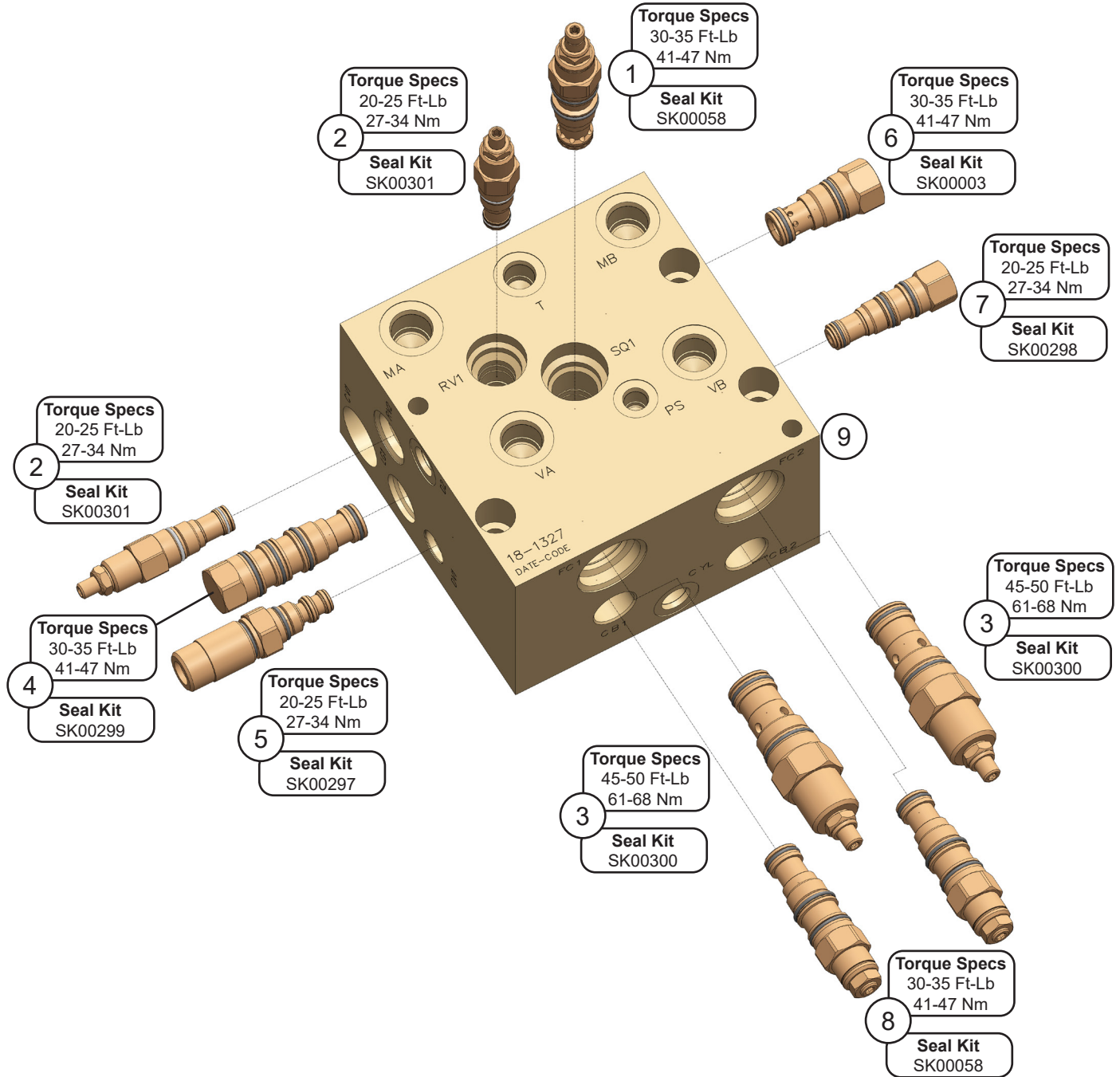


SUB-ASSEMBLY LINE MOUNT MANIFOLD - 6301242

ITEM	QTY	PART NUMBER	DESCRIPTION	
1	1	6300609	Valve Line Body	
2	1	6301679	Cavity Plug	Seal Kit SK00300
3	1	6300497	Adaptor Bulkhead 08MB-08MO	
4	1	6300523	Adaptor 08MB-08MB	
5	1	6300364	Filter	

ROTATION RELEASE MANIFOLD - 6360104

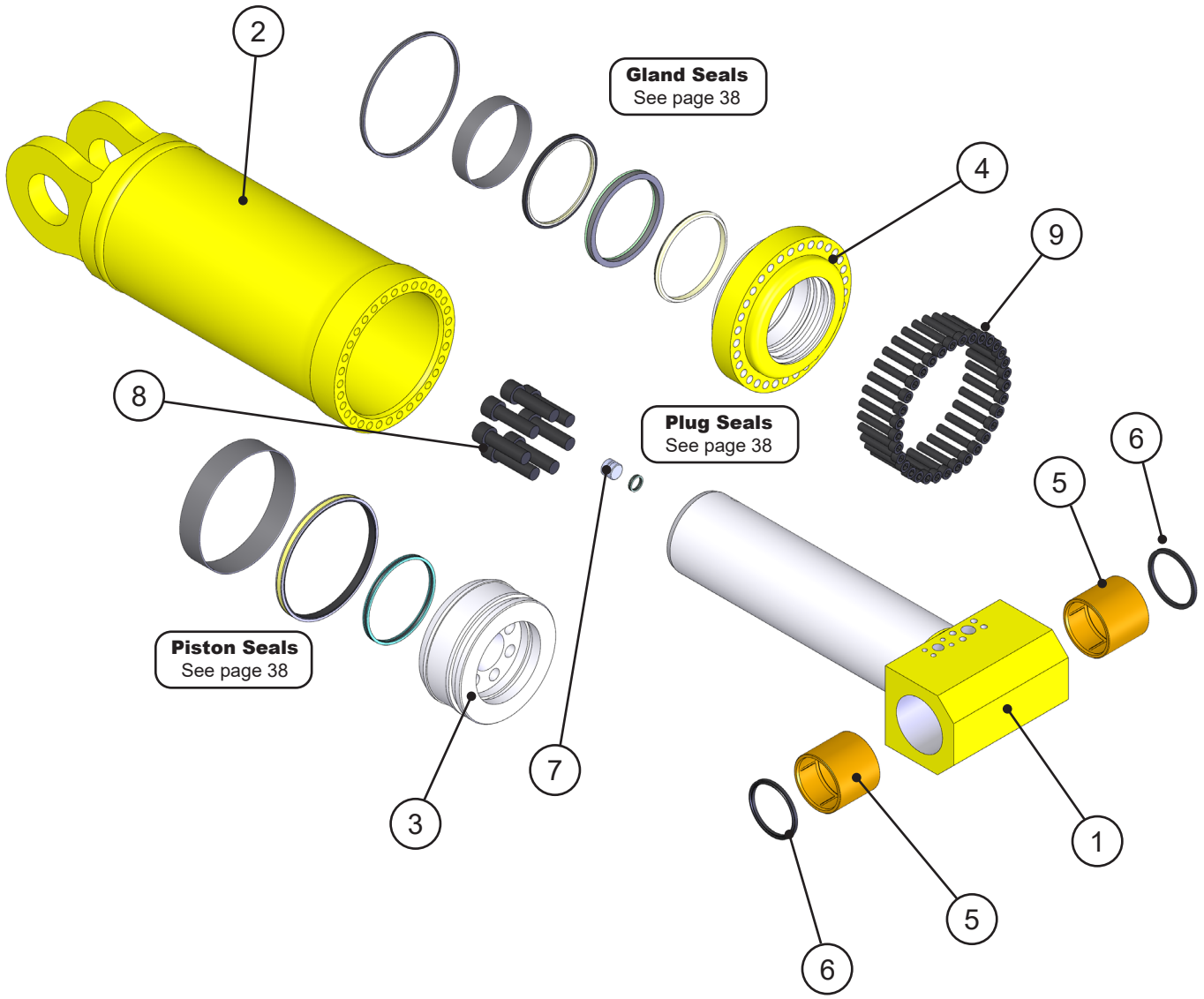
For use with Assembly Sub-Head/Rotation - 1108151/ 1108160.



ROTATION RELEASE MANIFOLD - 6360104

ITEM	QTY	PART NUMBER	DESCRIPTION	
1	1	6360107	Valve Sequence	Seal Kit SK00058
2	2	6360108	Valve Relief	Seal Kit SK00301
3	2	6360109	Valve Flow Control	Seal Kit SK00300
4	1	6360110	Valve Logic	Seal Kit SK00299
5	1	6360111	Valve Pilot Operated	Seal Kit SK00297
6	1	6360088	Valve Check	Seal Kit SK00003
7	1	6360112	Valve Shuttle	Seal Kit SK00298
8	2	6360113	Valve Counterbalance	Seal Kit SK00058
9	1	6360114	Manifold Block	

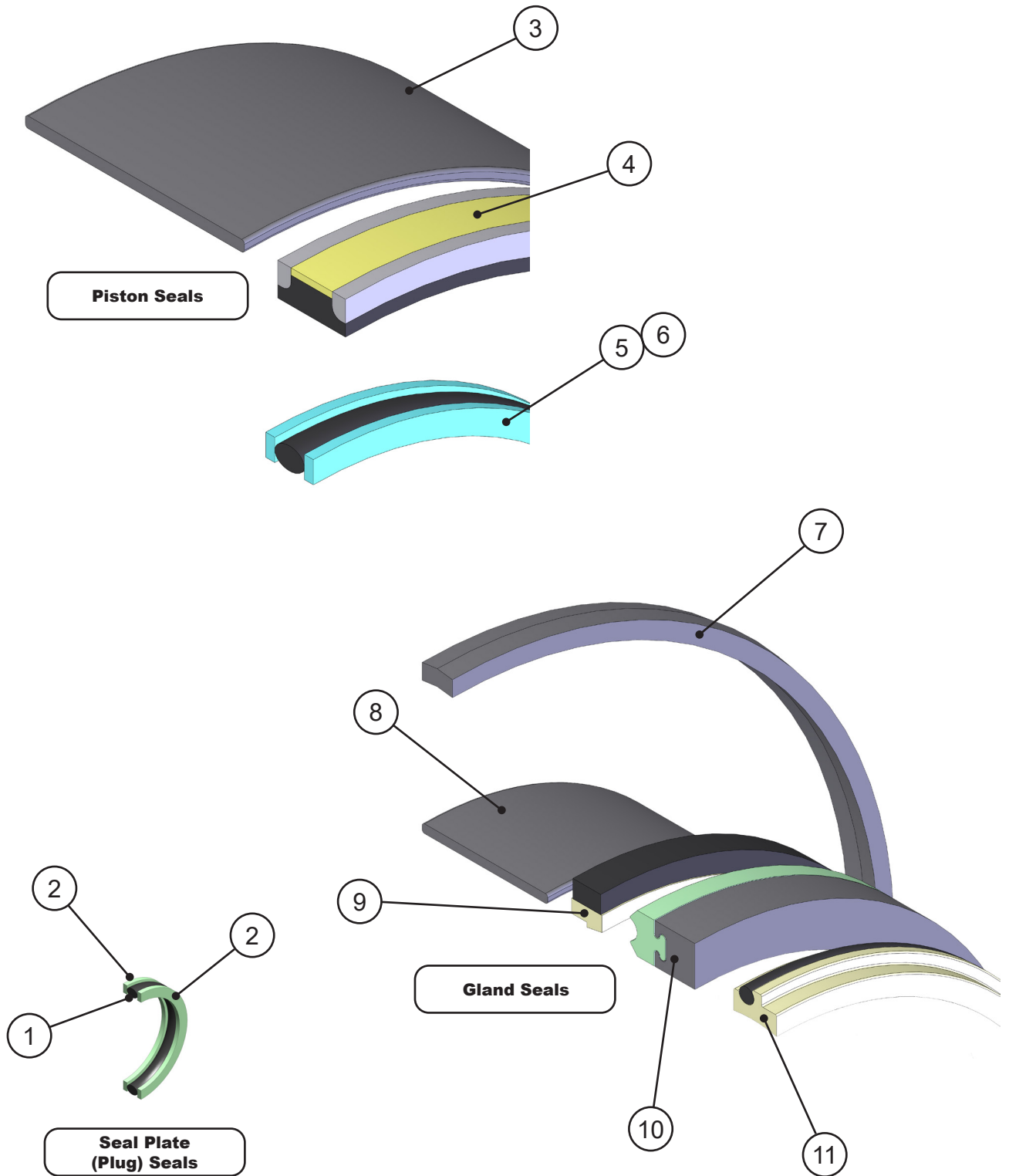
ASSEMBLY CYLINDER 6350085 - B10.0 R7.0 S21.25



ASSEMBLY CYLINDER 6350085 - B10.0 R7.0 S21.25

ITEM	QTY	PART NUMBER	DESCRIPTION
1	1	For replacement parts call the Genesis Parts Department. USA 715-395-3488 Europe +49 83 31 9 25 98 0	Piston Rod Assembly
2	1		Butt and Tube Assembly
3	1		Piston
4	1		Gland
5	2		Bushing
6	2		Pin Seal
7	1		Seal Plate (Plug)
8	7		Socket Head Capscrew
9	25		Socket Head Capscrew

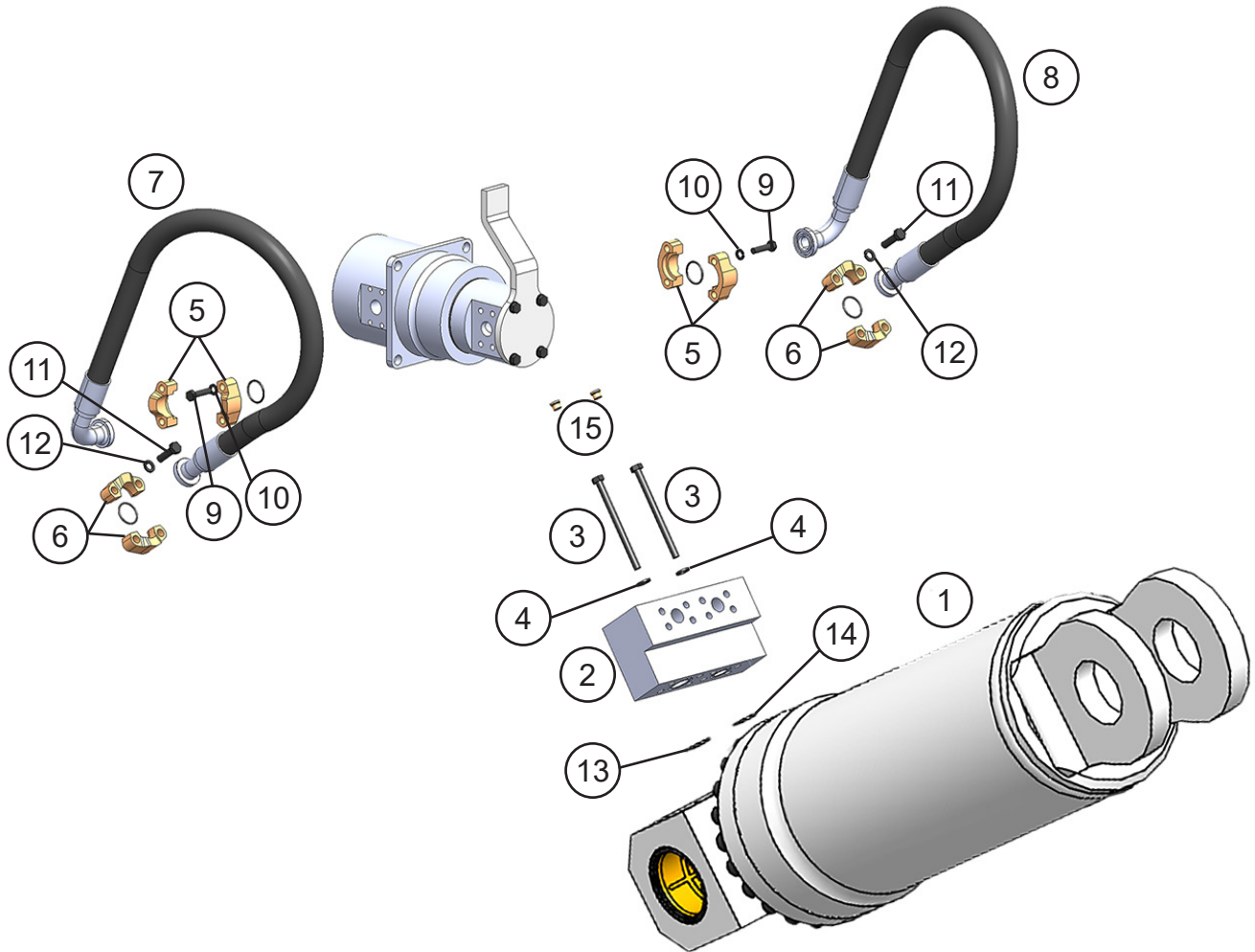
ASSEMBLY CYLINDER PACKING KIT



ASSEMBLY CYLINDER PACKING KIT

ITEM	QTY	PART NUMBER	DESCRIPTION
1	1	For replacement parts call the Genesis Parts Department. USA 715-395-3488 Europe +49 83 31 9 25 98 0	O-Ring
2	2		Vented Back Up Washer
3	1		Piston Bearing Ring
4	1		Capped T Seal
5	1		O-Ring (90 Durometer)
6	2		Vented Back Up Washer
7	1		Kuver Seal
8	1		Gland Bearing Seal
9	1		Buffer Seal
10	1		Deep Z Seal w/ Delta Back Up
11	1		DX Wiper

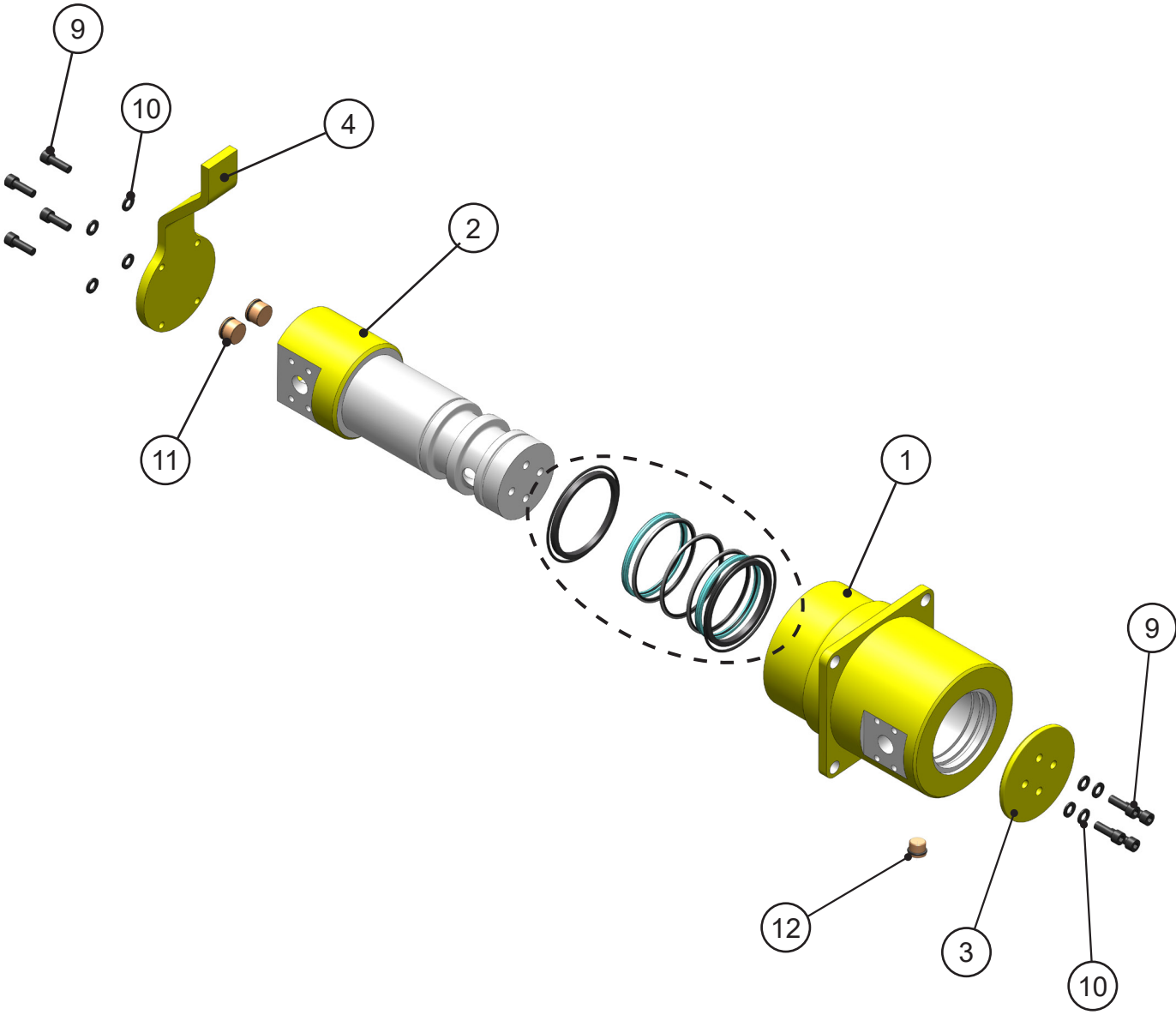
ASSEMBLY HYDRAULIC



ASSEMBLY HYDRAULIC

ITEM	QTY	PART NUMBER	DESCRIPTION
1	1	6350085	Sub-Assy Cyl B10.0 R7.0 S21.25
2	1	1107928	Mach Cylinder Port Block
3	8	F0112160	Hex Head Capscrew M12 x 1.75 x 160
4	8	F1201224	Flat Washer M12
5	4	H0262100	Split Flange Half 1.00 Code 62
6	4	H0662100	Split Flange Half 1.00 Code 62
7	1	1107933	Hose
8	1	1107932	Hose
9	8	F0110040	Hex Head Capscrew M10 x 1.50 x 40
10	8	F1401000	Lock Washer M10
11	8	F0112040	Hex Head Capscrew M12 x 1.75 x 40
12	8	F1401200	Lock Washer M12
13	1	S0190222	O-Ring
14	5	S0190219	O-Ring
15	2	6300153	Zero Leak Plug SAE-06

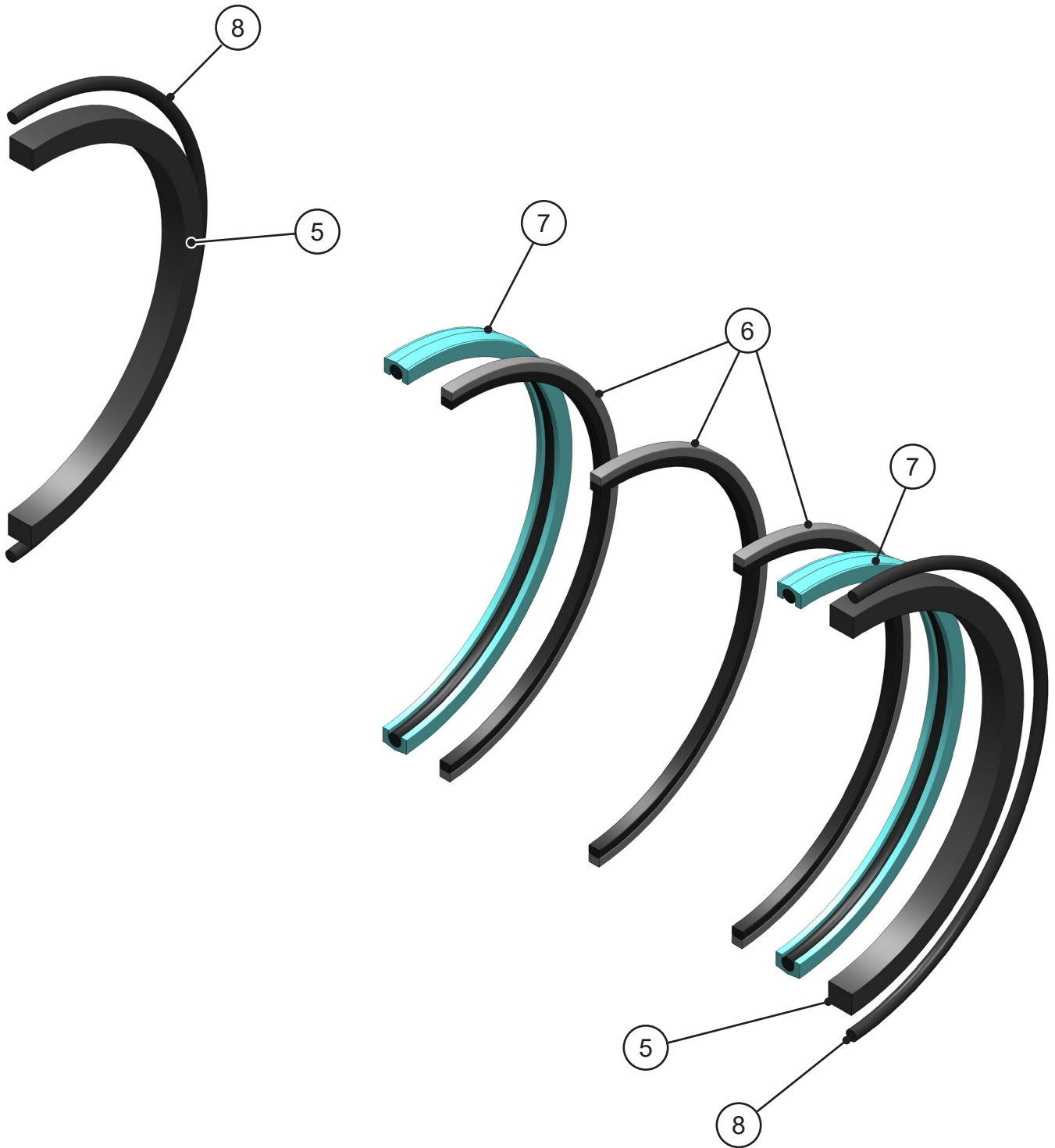
ASSEMBLY SWIVEL MANIFOLD - 6350185



ASSEMBLY SWIVEL MANIFOLD - 6350185

ITEM	QTY	PART NUMBER	DESCRIPTION
1	1	For replacement parts call the Genesis Parts Department. USA 715-395-3488 Europe +49 83 31 9 25 98 0	2-Port Housing Assembly
2	1		2-Port Spool
3	1		Keeper Plate
4	1		Torque Arm
5	2		Wear Ring
6	3		Seal Kit
7	2		Crown Seal
8	2		O-Ring Seal
9	8		Socket Head Capscrew
10	8		Lock Washer
11	2		#14 SAE Hex Plug
12	1		#06 SAE Hex Plug

ASSEMBLY SWIVEL MANIFOLD SEALS



ASSEMBLY SWIVEL MANIFOLD SEALS

ITEM	QTY	PART NUMBER	DESCRIPTION
5	2	For replacement parts call the Genesis Parts Department. USA 715-395-3488 Europe +49 83 31 9 25 98 0	Wear Ring
6	3		Seal Kit
7	2		Crown Seal
8	2		O-Ring

SPLIT FLANGE KITS USED IN THIS MANUAL

1" Split Flange Kit - Code 61 - M10

QTY	PART NUMBER	DESCRIPTION
2	H0261100	Split Flange Half 1.00 Code 61
4	F0110035	Hex Head Capscrew M10 x 1.50 x 35
4	F1401000	Lock Washer M10
1	S0190219	O-Ring

1" Split Flange Kit - Code 62 - M10

QTY	PART NUMBER	DESCRIPTION
2	H0262100	Split Flange Half 1.00 Code 62
4	F0110040	Hex Head Capscrew M10 x 1.50 x 40
4	F1401000	Lock Washer M10
1	S0190219	O-Ring

1" Split Flange Kit - Code 62 - M12

QTY	PART NUMBER	DESCRIPTION
2	H0262100	Split Flange Half 1.00 Code 62
4	F0112040	Hex Head Capscrew M12 x 1.75 x 40
4	F1401200	Lock Washer M12
1	S0190219	O-Ring

1-1/4" Split Flange Kit - Code 62 - M12

QTY	PART NUMBER	DESCRIPTION
2	H0262125	Split Flange Half 1.25 Code 62
4	F0112050	Hex Head Capscrew M12 x 1.75 x 50
4	F1401200	Lock Washer M12
1	S0190222	O-Ring

1-1/4" Split Flange Kit - Code 62 - M14

QTY	PART NUMBER	DESCRIPTION
2	H0262125	Split Flange Half 1.25 Code 62
4	F0114050	Hex Head Capscrew M14 x 2.00 x 50
4	F1401400	Lock Washer M14
1	S0190222	O-Ring

BOLT TORQUE SPECIFICATIONS

Reference the product Thread Treatment Diagrams on page 48 to determine whether to use wet or dry torque values for specific bolts.

Reference Procedures on page 49 for threadlocker or anti-seize application and bolt and bolt hole cleaning.

Prior to torquing, clean all bolt holes, bolts and nuts to remove dirt, grease and oil, and identify bolt type.

Never re-torque bolts that use Loctite. If a bolt becomes loose or damaged after the initial use when Loctite was applied and the bolt was torqued, the bolt must be replaced.

Never break tightened bolts loose with a torque wrench. Doing so may break the torque wrench or take it out of calibration.

Torque wrenches should be calibrated on an annual basis.

When using a torque multiplier with a torque wrench, incorrect settings will be multiplied by the ratio of the torque wrench.

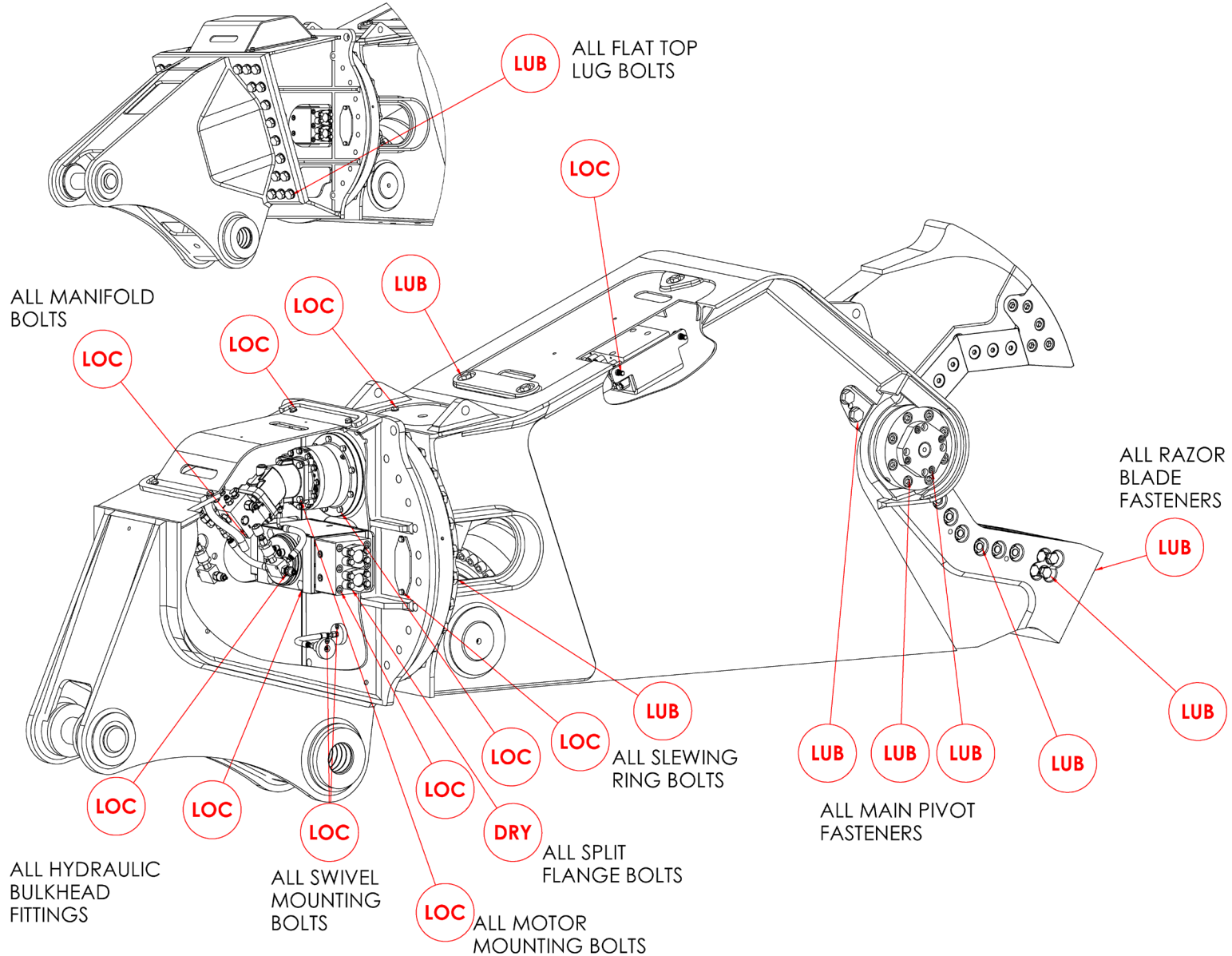
Never use an impact driver on a torque multiplier.

THREAD TREATMENT DIAGRAM

Mobile Shears

Use this diagram to determine what thread treatment, if any, is required for each fastener.

For thread treatment application procedures, see page 49. For prescribed torque values, see page 51.



PROCEDURES

Reference the product Thread Treatment Diagrams on page 48 to determine which of the following procedures is required.

Cleaning

To ensure proper performance of thread treatment and accurate torque values, clean and degrease **all internal and external threads** prior to application of threadlocker, anti-seize or primer and before installation of hardware.

- Ensure both internal and external threads are free of dirt or debris.
- Use brake cleaner or similar cleaning solvent on all threads to remove any grease or oil.
- Allow threads to dry.

NOTICE

Failure to properly clean threads will cause threadlocker, primer, and/or anti-seize to not properly cure.

LOC

Threadlocker

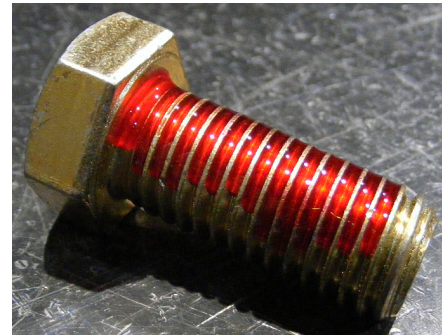
For bolted connections requiring threadlocker, use **Loctite 263** or equivalent applied using the following procedure:

- Clean and degrease all threads.
- For thru holes or nuts, apply threadlocker to bolt threads.
- For blind holes, apply stripe of threadlocker along the length of the hole (applying to the bolt can cause escaping air to remove threadlocker as the bolt is inserted).
- Torque bolt to specified **Wet Torque Value**, see page 51.

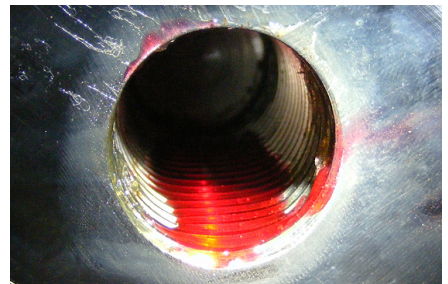
For threaded hydraulic fitting connections, use **Loctite 5452** or equivalent thread sealant in conjunction with **Loctite 7471** primer using the following procedure:

- Clean and degrease all threads.
- Apply Loctite 7471 primer to both external and internal threads and allow to dry.
- Apply threadlocker to 360 degrees of the threads on the male fitting, ensuring adequate coverage.
- Assemble fitting per directions in operator's manual.
- For O-ring boss and flat face O-ring connections, torque fittings to values specified on page 52.

Threadlocker



Blind Hole



Hydraulic Fitting



PROCEDURES

LUB

Anti-Seize

For bolted connections requiring anti-seize lubrication, use **Loctite LB8008** or equivalent using the following procedure:

- Clean and degrease all threads.
- Apply thin coat of anti-seize to internal and external threads and under bolt head and/or nut, ensuring complete coverage.
- Torque bolt to specified **Wet Torque Value**, see page 51.

Anti-Seize

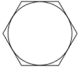
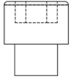
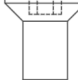


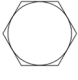
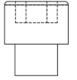
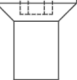
DRY

No Thread Treatment

- Clean and degrease all threads.
- Torque bolt to specified **Dry Torque Value**, see page 51.

BOLT TORQUE SPECIFICATIONS

Dry Torque Values						
		Hex/Socket Head		Flat Head		
						
Fastener Grade	Size x Pitch	Nm	Ft-lb	Nm	Ft-lb	
CL 10.9	M8 x 1.25	35	26	27	20	
	M10 x 1.50	71	53	58	42	
	M12 x 1.75	124	92	101	73	
	M14 x 1.50	200	148	163	118	
	M14 x 2.00	200	148	163	118	
	M16 x 2.00	311	230	254	184	
	M20 x 1.50	610	450	498	360	
	M20 x 2.50	608	449	497	359	
	M24 x 3.00	1054	778	861	622	
	M27 x 3.00	1543	1138	1260	910	
	M30 x 3.50	2095	1545	1712	1236	
	M36 x 4.00	3659	2699	2991	2159	
8	1/4-20	14	11	11	8	
	5/16-18	32	24	26	19	
	3/8-16	59	44	48	35	
	7/16-14	94	70	77	56	
	1/2-13	143	106	116	84	
	1/2-20	162	120	133	96	
	5/8-11	287	212	234	169	
	3/4-10	509	376	415	300	
	7/8-9	821	606	670	484	
	1.00-8	1232	909	1007	727	
	1.00-14	1383	1020	1130	816	
	1.25-7	2463	1817	2013	1453	
8/L9	1.50-6	4287	3162	3504	2529	

Wet Torque Values						
		Hex/Socket Head		Flat Head		
						
Fastener Grade	Size x Pitch	Nm	Ft-lb	Nm	Ft-lb	
CL 10.9	M8 x 1.25	29	22	23	17	
	M10 x 1.50	61	45	49	36	
	M12 x 1.75	105	78	85	62	
	M14 x 1.50	150	111	121	88	
	M14 x 2.00	170	126	138	100	
	M16 x 2.00	265	196	216	156	
	M20 x 1.50	456	337	372	269	
	M20 x 2.50	517	382	422	305	
	M24 x 3.00	894	660	731	528	
	M27 x 3.00	1312	968	1072	774	
	M30 x 3.50	1779	1312	1453	1049	
	M36 x 4.00	3110	2294	2542	1835	
8	1/4-20	13	10	11	8	
	5/16-18	27	20	22	16	
	3/8-16	50	37	40	29	
	7/16-14	80	59	65	47	
	1/2-13	122	90	99	72	
	1/2-20	138	102	112	81	
	5/8-11	244	180	199	144	
	3/4-10	433	320	354	256	
	7/8-9	698	515	570	412	
	1.00-8	1046	772	854	617	
	1.00-14	1175	867	960	693	
	1.25-7	2095	1545	1712	1236	
8/L9	1.50-6	3644	2688	2979	2150	

O-RING BOSS & FLAT FACE O-RING TORQUE SPECIFICATIONS

O-Ring Boss Torque Values		
Size Dash	Nm	Ft-lb
-4	22	16
-5	27	20
-6	36	26
-8	83	60
-10	110	80
-12	187	135
-14	249	180
-16	304	220
-20	387	280
-24	498	360

Flat Face O-Ring Torque Values		
Size Dash	Nm	Ft-lb
-4	18	13
-6	30	22
-8	60	44
-10	85	62
-12	121	88
-14	121	88
-16	160	116
-20	213	154
-24	274	198

BOLT DRIVE SPECIFICATIONS

Thread Size x Pitch	Hex Head	Socket Head	Flat Head
			
Wrench/Drive Size			
M8 x 1.25	13mm	6mm	5mm
M10 x 1.50	17mm	8mm	6mm
M12 x 1.75	19mm	10mm	8mm
M14 x 1.50	22mm	12mm	10mm
M14 x 2.00	22mm	12mm	10mm
M16 x 2.00	24mm	14mm	10mm
M20 x 1.50	30mm	17mm	12mm
M20 x 2.50	30mm	17mm	12mm
M24 x 3.00	36mm	19mm	14mm
M27 x 3.00	41mm	19mm	-
M30 x 3.50	46mm	22mm	-
M36 x 4.00	55mm	27mm	-
1/4-20	7/16"	3/16"	5/32"
5/16-18	1/2"	1/4"	3/16"
3/8-16	9/16"	5/16"	7/32"
7/16-14	5/8"	3/8"	1/4"
1/2-13	3/4"	3/8"	5/16"
1/2-20	3/4"	3/8"	5/16"
5/8-11	15/16"	1/2"	3/8"
3/4-10	1-1/8"	5/8"	1/2"
7/8-9	1-5/16"	3/4"	9/16"
1.00-8	1-1/2"	3/4"	5/8"
1.00-14	1-1/2"	3/4"	5/8"
1.25-7	1-7/8"	7/8"	7/8"
1.50-6	2-1/4"	1"	1"

WARRANTY

Claim Procedure

Notify the Genesis Service Department of the potential warranty claim prior to making the repair. Digital pictures are very helpful for diagnosing problems and recommending repairs.

Contact the Genesis Service Department before making alterations, changes or repairs to any component that is going to be considered for warranty. Not doing so will void all Genesis warranty consideration.

The Genesis Service Department will issue an authorization number to track the repair costs, outgoing parts, and/or defective parts returning to the factory.

Replacement parts must be ordered using a purchase order number. Shipping is standard ground. Overnight shipping is available by request, and Genesis will not cover the shipping charge.

When the repair is complete, submit an invoice to the Genesis Service Department within 30 days. Include itemized internal labor reporting, parts lists and invoices for outside contractors. Reference the authorization number on all invoices.

When returning parts for warranty consideration, include a copy of any related Genesis paperwork along with any other necessary documentation to ensure proper processing and credit. The Genesis Service Department will provide the necessary forms.

Your account will be credited when the warranty claim is accepted.

Blade Warranty

Standard warranty on blades will only be considered on the first edge, and wear on the edge must be 1/8" radius or less. Genesis does not warranty cutting blades that are cracked or broken from top to bottom (perpendicular to the long edge of the blade). Genesis also does not cover fasteners, the labor to replace wear components or collateral damage, such as blade seats, from broken blades, the piercing blade tang or adjustment plates.

Please direct any questions to the Genesis Service Department: 715-395-5252

PARTS ORDER POLICY AND PROCEDURE

Parts Orders Should Include

- Purchase order number
- Model and serial number of attachment
- Part number and quantity needed
- Shipping and billing address
- Method of shipment or required delivery date

Placing Orders

Orders may be placed by phone or e-mail. To e-mail an order, use the form on the following page or your purchase order form. Contact information is located at the front of this manual.

Part Numbers

Part numbers are listed in a separate Parts Manual or, if included, the Parts section of this manual. Contact the Genesis Parts Department with questions regarding part numbers, availability and pricing.

Shipping

All orders will be shipped best way surface unless an alternate shipping method is requested. Shipping charges are not included in the purchase price of parts.

Invoices

All invoices are due upon receipt. Any accounts with invoices open beyond 60 days are subject to review and may be placed on C.O.D. status without further notice.

Returns

Many unused Genesis parts may be returned with proper documentation. Return shipping is the responsibility of the purchaser. Credit will be issued upon return, less a 25% restocking fee. Documentation is required for credit of returned parts. Contact the Genesis Service Department at 715-395-5252 for an RGA (Return Goods Authorization) number and form. An RGA must accompany every return. Items shipped without an RGA may be returned to sender.

Warranty Returns

All parts returned to Genesis for warranty consideration must be returned with a completed RGA (Return Goods Authorization) provided by the Genesis Service Department. The form needs to be completed in its entirety, including any additional information requested by the Service Department. Return shipping is the responsibility of the sender and will be credited upon claim approval. A determination to accept or deny the claim will be made based upon the information available to Genesis. Warranty on purchased parts other than wear components is 6 months. Genesis does not cover labor costs to replace purchased parts replaced under warranty. There is no warranty period on wear parts or components.



GENESIS[®]
The Promise of Performance.

PARTS ORDER FORM

Customer: _____ Date: _____
 Phone: _____ Contact: _____
 Shipping Address: _____ E-mail: _____
 _____ Billing Address: _____

 Purchase Order: _____ Shipping Method: _____
 Model: _____ Serial Number: _____

Quantity	Part Number	Description	Price

E-mail to the Genesis Parts Department: genesisparts@genesisattachments.com
 For assistance, call 715-395-5252

INDEX

1-1/4" Split Flange Kit - Code 62 - M12	46	5515816 Plt Cover Sub-Head	21
1-1/4" Split Flange Kit - Code 62 - M14	46	6100092 Bearing Slewing Ring	25, 31
1" Split Flange Kit - Code 61 - M10	46	6200002 Grease Fitting	7, 9, 15, 17
1" Split Flange Kit - Code 62 - M10	46	6300018 Adapter	31
1" Split Flange Kit - Code 62 - M12	46	6300023 Adapter Bulkhead 08MO-06MO	25
2-Port Housing Assembly	43	6300076 Zero Leak Plug SAE-04	29
2-Port Spool	43	6300077 Plug Socket Head 10MB	25
#06 SAE Hex Plug	43	6300134 Dowel Pin	7, 9
#14 SAE Hex Plug	43	6300149 Adapter 10MB-08MO	25
1105456 Mach Bearing Upper Cylinder Connection	17	6300153 Zero Leak Plug SAE-06	29, 41
1105854 Mach Flange Shoulder Bolt	19	6300303 Adapter	31
1105992 Mach Auto Guide	15	6300305 Adapter	31
1106478 Shim Set, Auto Guide	15	6300361 Valve Flow Control	27
1107865 Wtmg Upper	5	6300364 Filter	27, 33
1107879 Wtmg Stick	5	6300497 Adaptor Bulkhead 08MB-08MO	27, 33
1107908 Mach Main Shaft	9	6300523 Adaptor 08MB-08MB	27, 33
1107909 Mach Bearing LH/RH	7, 9	6300609 Valve Line Body	27, 33
1107910 Mach Rear Cyl Pin	17	6300731 Adapter 02MP-04MO	25
1107911 Mach Fuse 0.75 Lg	11, 13	6300768 Adapter	31
1107912 Mach Fuse 1.125 Lg	11	6300770 Adapter	25, 31
1107914 Mach Blade	11, 13	6301112 O-Ring	19
1107915 Mach Blade Upper Guide	13	6301202 Flow Control Sub-Assy	25
1107916 Mach Blade Lower Guide	11	6301242 Flow Control	31
1107918 Mach Adjust Plate	11	6301665 Relief Valve	29
1107919 Wldt Cover	19	6301679 Cavity Plug	33
1107928 Mach Cylinder Port Block	41	6310001 Diagnostic Nipple Dust Cap	25
1107932 Hose	41	6310041 Adapter	31
1107933 Hose	41	6310041 Adapter 06MFFOR-06MB-90	25
1107984 Hose	25	6310050 Adapter	31
1107985 Hose	25	6310051 Diagnostic Nipple	25
1107998 Hose	25	6310105 Adapter	31
1108011 Mach Bolt Socket Head Capscrew	25, 31	6350085 Sub-Assy Cyl B10.0 R7.0 S21.25	41
1108153 Hose	31	6350185 Assy Swivel Manifold	25
1108154 Hose	31	6360088 Valve Check	35
1108155 Hose	31	6360095 Manifold Block	29
1108156 Hose	31	6360096 Counterbalance Valve	29
1108157 Hose	31	6360102 Valve Rotate Cross-over / C'bal	25
1108158 Hose	31	6360104 Manifold Rotation Release	31
1108159 Hose	31	6360107 Valve Sequence	35
3500310 Mach Pin Keeper Rear	17	6360108 Valve Relief	35
3500345 Wldt Front Cyl Pin	17	6360109 Valve Flow Control	35
3500350 Mach Pin Keeper (Clevis)	17	6360110 Valve Logic	35
3500360 Shim Set Main Shaft	7, 9	6360111 Valve Pilot Operated	35
3501099 Mach End Cap	7, 9	6360112 Valve Shuttle	35
3501835 Mach Spacer 3.25 x 0.688, 5.0 x 0.20	31	6360113 Valve Counterbalance	35
3502034 Hose	25	6360114 Manifold Block	35
3502192 Pinion Motor	31	6370006 Clamp 0.75 Pipe Single Hose	25
3502323 Mach Port Block	25	6380100 Motor	31
5500752 Bar Strap	21	6380102 Motor Manifold Assy	25
5500785 Mach Pin Keeper	21	Assembly Access Covers	5, 18, 19
5512411 Mach Grease Bulkhead Adapter	25	Assembly Auto Guide	5, 14, 15
5512419 Mach Slewing Ring Grease Adapter	25, 31	Assembly Cylinder	5
5515649 Wtmg Sub-Head	21	Assembly Cylinder 6350085 - B10.0 R7.0 S21.25	36, 37
5515676 Plt Cover Sub-Head Small	21	Assembly Cylinder Packing Kit	5, 38, 39
5515677 Plt Cover Sub-Head Large	21		

INDEX

- Assembly Cylinder Pins 5, 16, 17
- Assembly Hydraulic 40, 41
- Assembly Lower Blades 5, 10, 11
- Assembly Lugs 22, 23
- Assembly Pivot Group - Left Side 5, 8, 9
- Assembly Pivot Group - Right Side 5, 6, 7
- Assembly Rotation 5
- Assembly Rotation Circuit - 1108151 / 1108160 30, 31
- Assembly Sub-Head/Rotation - 1107983 / 1107986 24, 25
- Assembly Swivel Manifold - 6350185 42, 43
- Assembly Swivel Manifold Seals 44, 45
- Assembly Swivel Manifold - Top/Bottom Ported 5
- Assembly Upper Blades 5, 12, 13
- Assembly Upper Head 5
- Assembly Upper Head - Standard 20, 21
- Bar Strap 23
- Bolt Drive Specifications 53
- Bolt Torque Specifications 47, 51
- Bracket Fasteners 23
- Buffer Seal 39
- Bushing 37
- Butt and Tube Assembly 37
- Capped T Seal 39
- Contact Information 2, 60
- Crown Seal 43, 45
- Deep Z Seal w/ Delta Back Up 39
- DX Wiper 39
- F0110035 Hex Head Capscrew M10 x 1.50 x 35 46
- F0110040 Hex Head Capscrew M10 x 1.50 x 40 41, 46
- F0112020 Hex Head Capscrew M12 x 1.75 x 20 21
- F0112030 Hex Head Capscrew M12 x 1.75 x 30 21
- F0112040 Hex Head Capscrew M12 x 1.75 x 40 41, 46
- F0112050 Hex Head Capscrew M12 x 1.75 x 50 25, 46
- F0112160 Hex Head Capscrew M12 x 1.75 x 160 41
- F0114050 Hex Head Capscrew M14 x 2.00 x 50 46
- F0116040 Hex Head Capscrew M16 x 2.0 x 40 25
- F0116060 Hex Head Capscrew M16 x 2.0 x 60 25
- F0120100 Hex Head Capscrew M20 x 2.5 x 100 25, 31
- F0608060 Socket Head Capscrew M8 x 1.25 x 60 25
- F0610025 Socket Head Capscrew M10 x 1.50 x 25 25
- F0610130 Socket Head Capscrew M10 x 1.50 x 130 25
- F0612090 Socket Head Capscrew 31
- F0620100 Socket Head Capscrew M20 x 2.50 x 100 17
- F0620160 Socket Head Capscrew M20 x 2.50 x 160 17
- F0624060 Socket Head Capscrew M24 x 3.00 x 50 7, 9
- F0710400 Socket Head Capscrew 1 - 8 x 4½ 15
- F0712350 Socket Head Capscrew 1¼ 7 x 3½ 11
- F0712450 Socket Head Capscrew 1¼ - 7 x 4½ 11
- F0712650 Socket Head Capscrew 1¼ - 7 x 6½ 13
- F0816200 Hex Nut M16 x 2.0 25
- F1020250 Nylock Hex Nut M20 x 2.50 17
- F1201224 Flat Washer M12 21, 41
- F1201630 Flat Washer M16 25
- F1202037 Flat Washer M20 25
- F1401000 Lock Washer M10 41, 46
- F1401200 Lock Washer M12 25, 41, 46
- F1401400 Lock Washer M14 46
- F1900050 Washer 25, 31
- F2802000 Washer M20 31
- General Arrangement 4, 5
- Gland 37
- Gland Bearing Seal 39
- Gland Seals 38
- H0261100 Split Flange Half 1.00 Code 61 46
- H0262100 Split Flange Half 1.00 Code 62 25, 41, 46
- H0262125 Split Flange Half 1.25 Code 62 46
- H0362100 Split Flange Plug 1.0 25
- H0662100 Split Flange Half 1.00 Code 62 41
- Hex Head Capscrew 23
- Keeper Plate 43
- Kuver Seal 39
- Lock Washer 43
- Mach Pin Keeper 23
- Mach Spacer Sleeve 21, 23
- O-Ring 39, 45
- O-Ring (90 Durometer) 39
- O-Ring Boss & Flat Face O-Ring Torque Specifications 52
- O-Ring Seal 43
- Parts Order Form 56
- Parts Order Policy and Procedure 55
- Pin Seal 37
- Piston 37
- Piston Bearing Ring 39
- Piston Rod Assembly 37
- Piston Seals 38
- Procedures 49, 50
- Rotation Release Manifold 5
- Rotation Release Manifold - 6360104 34, 35
- S0190015 O-Ring 25
- S0190219 O-Ring 25, 41, 46
- S0190222 O-Ring 41, 46
- S0190270 O-Ring 7, 9
- S0190372 O-Ring 7, 9
- Seal Kit 43, 45
- Seal Kit 6300634 26, 27
- Seal Kit SK00002 29
- Seal Kit SK00003 35
- Seal Kit SK00058 35
- Seal Kit SK00220 29
- Seal Kit SK00236 29
- Seal Kit SK00297 35
- Seal Kit SK00298 35
- Seal Kit SK00299 35
- Seal Kit SK00300 33, 35
- Seal Kit SK00301 35
- Seal Plate (Plug) 37
- Seal Plate (Plug) Seals 38
- Shim Set 15

INDEX

SK00003 Seal Kit	34
SK00058 Seal Kit	34
SK00297 Seal Kit	34
SK00298 Seal Kit	34
SK00299 Seal Kit	34
SK00300 Seal Kit	32, 34
SK00301 Seal Kit	34
Socket Head Capscrew	37, 43
Split Flange Kits Used in This Manual	46
Stick Pin Decal	23
Sub-Assembly Line Mount Manifold	5, 26, 27
Sub-Assembly Line Mount Manifold - 6301242	32, 33
Table of Contents	3
Thread Treatment Diagram	48
Torque Arm	43
Valve Rotate Crossover/C'Bal	5, 28, 29
Vented Back Up Washer	39
Warranty	54
Washer	23
Wear Ring	43, 45
Wldt Link Pin	23
Wldt Pin	21
Wldt Stick Pin	23
Wtmg Lugs	23
Wtmg Lug Upper Head	5



GENESIS®

The Promise of Performance.

CONTACT INFORMATION

Genesis Attachments

1000 Genesis Drive
Superior, WI 54880 USA

Toll Free: 888-SHEAR-IT
(888-743-2748)

Phone: 715.395.5252

E-mail:
info@genesisattachments.com

Europe/Africa/Middle East Genesis GmbH

Teramostrasse 23
87700 Memmingen, Germany

Phone: +49 83 31 9 25 98 0

Fax: +49 83 31 9 25 98 80

genesis-europe.com

E-mail:
info@genesis-europe.com

Asia Pacific Representative Office

24 Upper Serangoon View #12-28
Singapore 534205

Phone: +65 9673 9730

E-mail:
tchoo@genesisattachments.com

Central America & Colombia

Cra 13A #89-38 / Ofi 613
Bogota, Colombia

Phone: +57 1 610 8160 / 795 8747

E-mail:
contact@themsagroup.com

View and download all manuals: genesisattachments.com/manuals
Patents: genesisattachments.com/products/patents