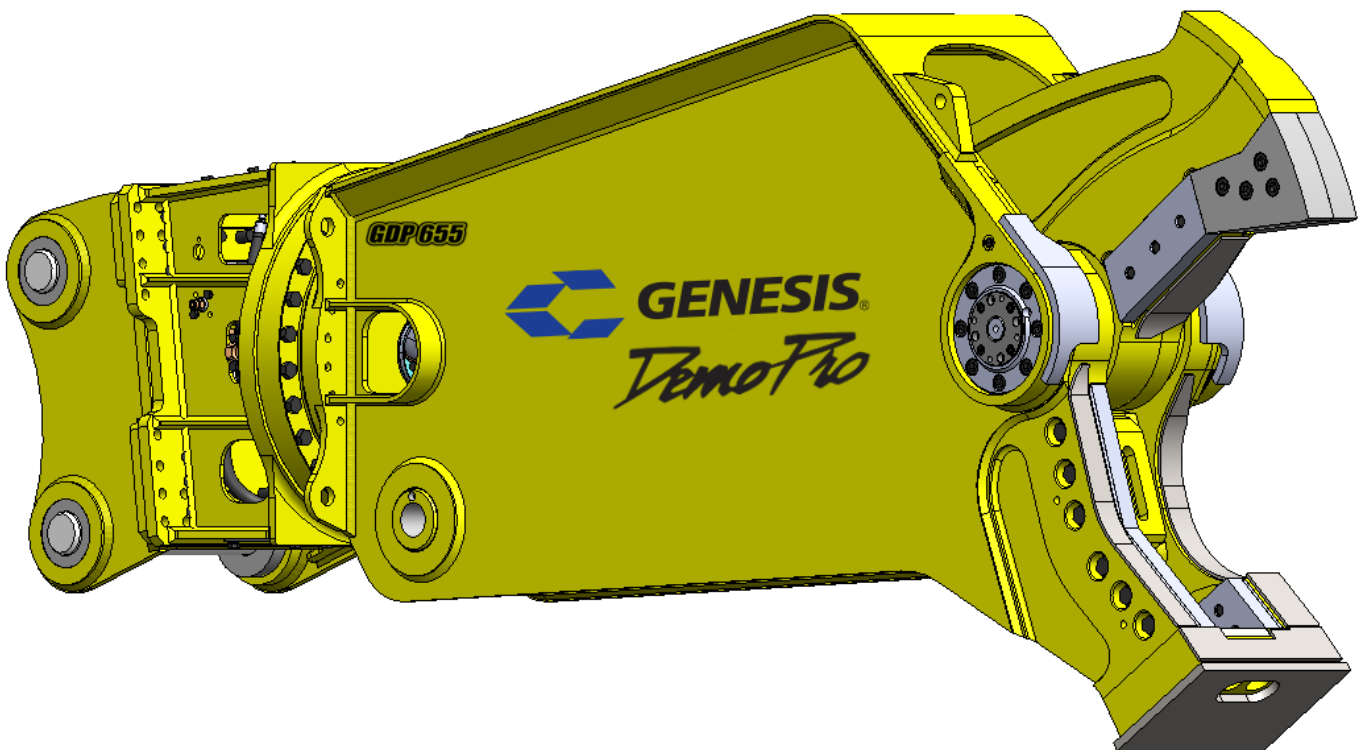


GDP 655 DemoPro

PARTS MANUAL



CONTACT INFORMATION

Genesis Attachments

1000 Genesis Drive
Superior, WI 54880 USA

Toll Free: 888-SHEAR-IT
(888-743-2748)

Phone: 715.395.5252

E-mail:
info@genesisattachments.com

Europe/Africa/Middle East Genesis GmbH

Teramostrasse 23
87700 Memmingen, Germany

Phone: +49 83 31 9 25 98 0
Fax: +49 83 31 9 25 98 80
genesis-europe.com

E-mail:
info@genesis-europe.com

Asia Pacific Representative Office

24 Upper Serangoon View #12-28
Singapore 534205

Phone: +65 9673 9730

E-mail:
tchoo@genesisattachments.com

Central America & Colombia

Cra 13A #89-38 / Ofi 613
Bogota, Colombia

Phone: +57 1 610 8160 / 795 8747

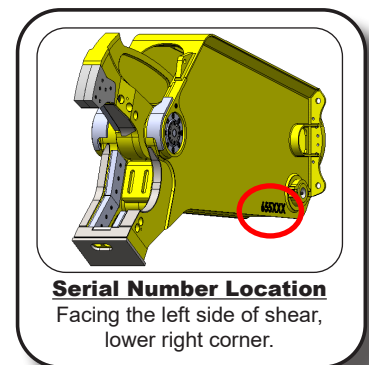
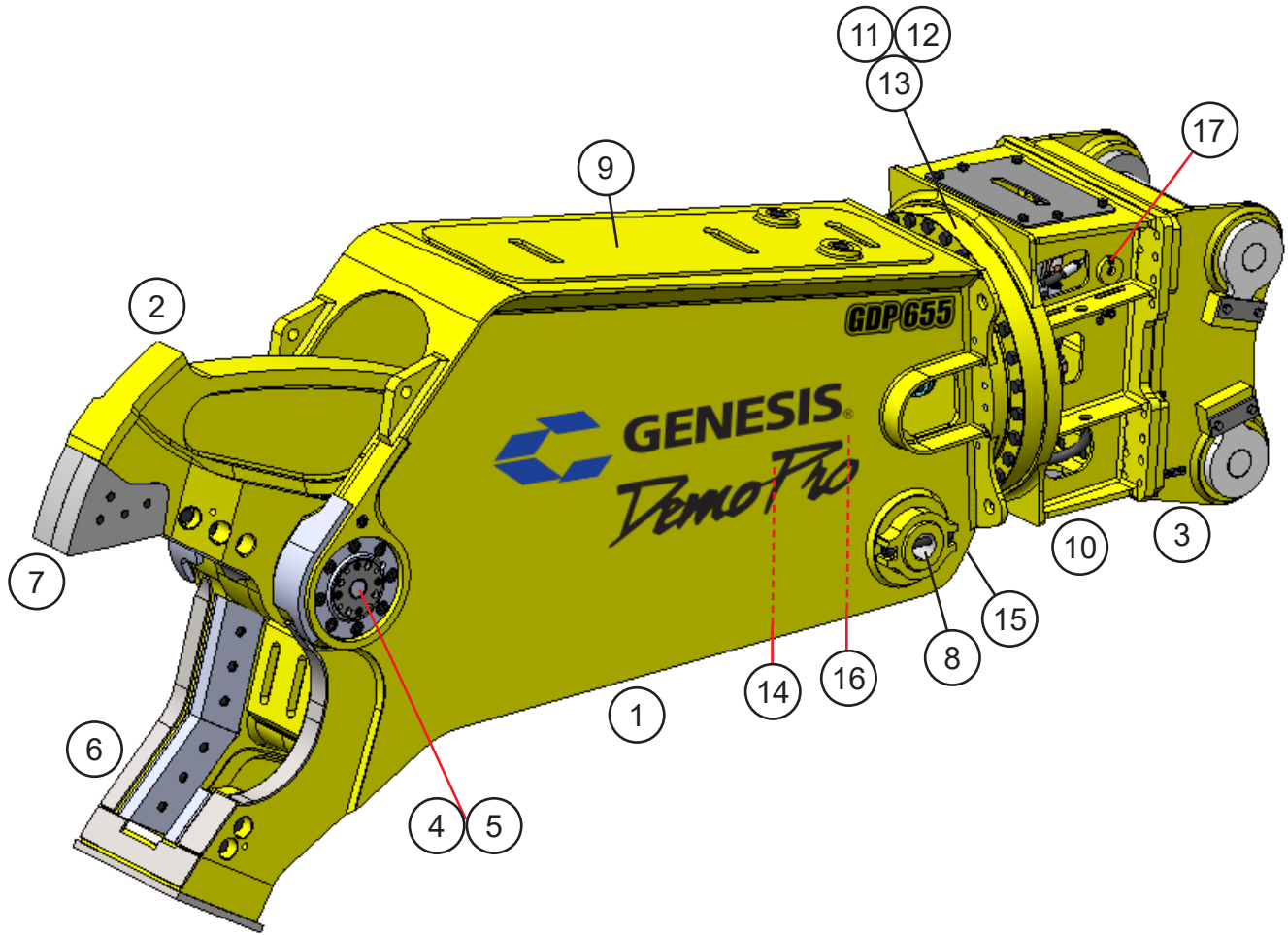
E-mail:
contact@themsagroup.com

View and download all manuals: genesisattachments.com/manuals
Patents: genesisattachments.com/products/patents

TABLE OF CONTENTS

CONTACT INFORMATION	2
GENERAL ARRANGEMENT	4
ASSEMBLY PIVOT GROUP - RIGHT SIDE	6
ASSEMBLY PIVOT GROUP - LEFT SIDE	8
ASSEMBLY LOWER BLADES	10
ASSEMBLY UPPER BLADES - STEEL TIPS	12
ASSEMBLY UPPER BLADES - CONCRETE TIPS	14
ASSEMBLY CYLINDER PINS	16
ASSEMBLY ACCESS COVERS	18
ASSEMBLY SUB-HEAD AND LUGS	20
ASSEMBLY ROTATION	22
ASSEMBLY ROTATION CIRCUIT - PISTON MOTOR	24
ASSEMBLY ROTATION CIRCUIT - GEROTOR MOTOR	26
SUB-ASSEMBLY ROTATE CROSS-OVER / C'BAL - PISTON MOTOR	28
SUB-ASSEMBLY ROTATE CROSS-OVER / C'BAL - GEROTOR MOTOR	30
SUB-ASSEMBLY LINE MOUNT MANIFOLD	32
ASSEMBLY OPEN AND CLOSE CIRCUIT	34
ASSEMBLY SWIVEL MANIFOLD	36
SUB-ASSEMBLY REGEN BLOCK	38
ASSEMBLY SLEWING RING LUBRICATION	40
SHEAR JAW ARMOR® AND WEAR PLATES	42
BOLT TORQUE SPECIFICATIONS	44
THREAD TREATMENT DIAGRAM	45
Mobile Shears.....	45
PROCEDURES	46
Cleaning.....	46
Threadlocker.....	46
Anti-Seize.....	47
No Thread Treatment.....	47
BOLT TORQUE SPECIFICATIONS	48
Dry Torque Values.....	48
Wet Torque Values.....	48
O-RING BOSS & FLAT FACE O-RING TORQUE SPECIFICATIONS	49
BOLT DRIVE SPECIFICATIONS	50
WARRANTY	51
Claim Procedure.....	51
Blade Warranty.....	51
PARTS ORDER POLICY AND PROCEDURE	52
Parts Orders Should Include.....	52
Placing Orders.....	52
Part Numbers.....	52
Shipping.....	52
Invoices.....	52
Returns.....	52
Warranty Returns.....	52
PARTS ORDER FORM	53
INDEX	54
CONTACT INFORMATION	56

GENERAL ARRANGEMENT



GENERAL ARRANGEMENT

ITEM	QTY	PART NUMBER	DESCRIPTION
1	1	*	Stick
2	1	*	Upper
3	1	*	Lugs
4		See page 6	Assembly Pivot Group - Right Side
5		See page 8	Assembly Pivot Group - Left Side
6		See page 10	Assembly Lower Blades
7		See page 12 & page 14	Assembly Upper Blades - Steel Tips & Concrete Tips
8		See page 16	Assembly Cylinder Pins
9		See page 18	Assembly Access Covers
10		See page 20	Assembly Sub-Head and Lugs
11		See page 22	Assembly Rotation
12		See page 24	Assembly Rotation Circuit - Piston Motor
		See page 26	Assembly Rotation Circuit - Gerotor Motor
13		See page 28	Sub-Assembly Rotate Cross-over / C'bal - Piston Motor
		See page 30	Sub-Assembly Rotate Cross-over / C'bal - Gerotor Motor
14		See page 34	Assembly Open and Close Circuit
15		See page 36	Assembly Swivel Manifold
16		See page 38	Sub-Assembly Regen Block
17		See page 40	Assembly Slewing Ring Lubrication

* Part numbers are Serial Number specific. For replacement parts call the Genesis Parts Department.

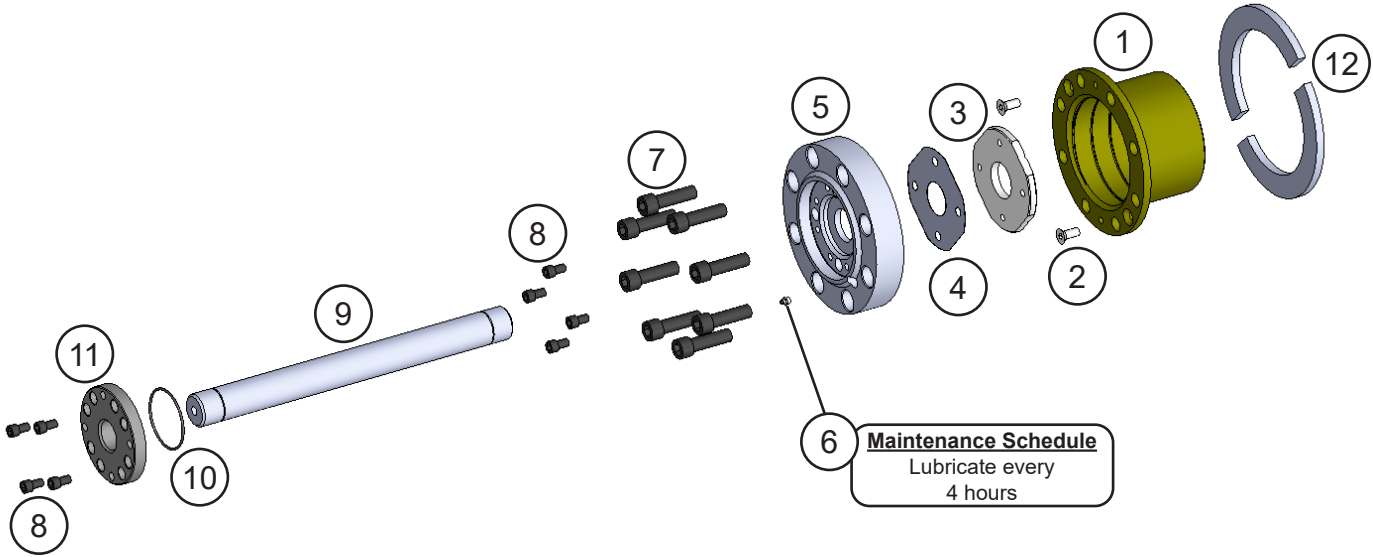
USA

715-395-3488

Europe

+49 83 31 9 25 98 0

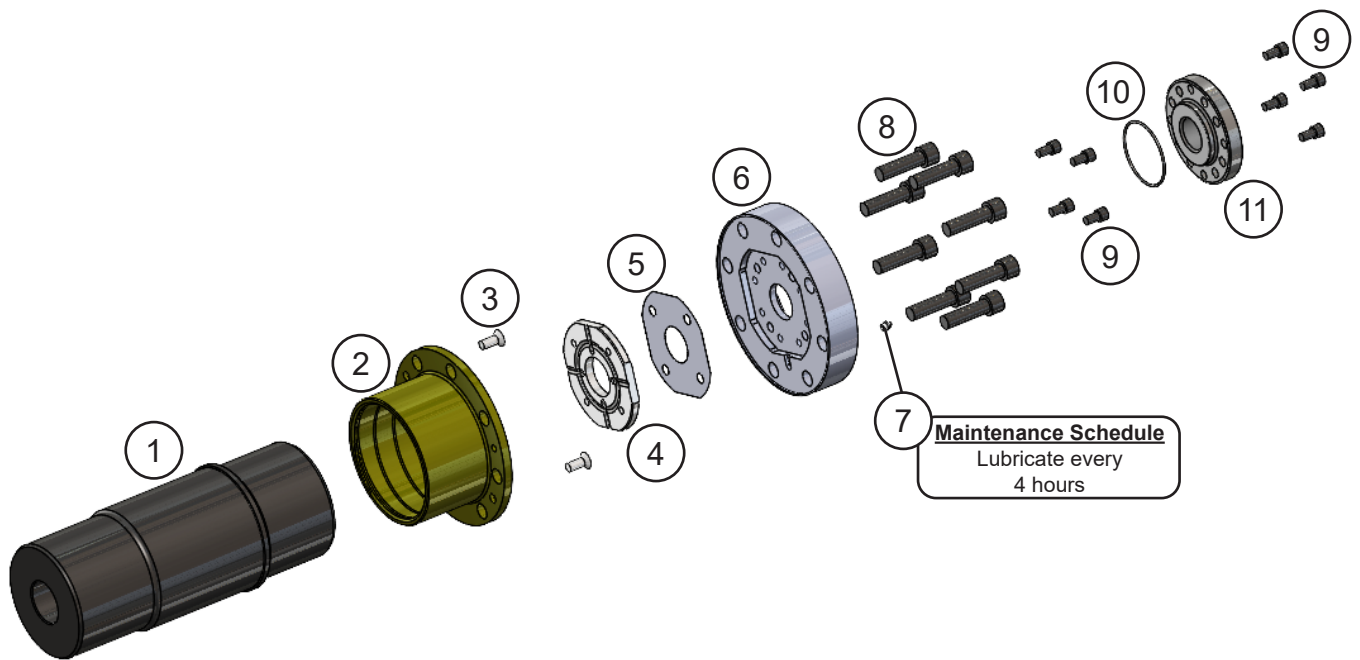
ASSEMBLY PIVOT GROUP - RIGHT SIDE



ASSEMBLY PIVOT GROUP - RIGHT SIDE

ITEM	QTY	PART NUMBER	DESCRIPTION
1	1	3101414	Mach Bearing RH
2	2	F0412030	Flat Head Capscrew M12 x 1.75 x 30
3	1	1109145	Mach Thrust Washer
4	1	1109146	Shim Set Thrust Washer
5	1	3101416	Mach End Cap
6	1	6200002	Grease Fitting
7	8	F0620070	Socket Head Capscrew M20 x 2.50 x 70
8	8	F0612020	Socket Head Capscrew M12 x 1.75 x 30
9	1	3101438	Mach Tie Rod
10	1	S0190238	O-Ring
11	1	1109147	Mach Tie Rod Nut
12	2	3101443	Demo Pivot Thrust Washer Half

ASSEMBLY PIVOT GROUP - LEFT SIDE



ASSEMBLY PIVOT GROUP - LEFT SIDE

ITEM	QTY	PART NUMBER	DESCRIPTION
1	1	*	Mach Main Shaft
2	1	3101415	Mach Bearing LH
3	2	F0412030	Flat Head Capscrew M12 x 1.75 x 30
4	1	1109145	Mach Thrust Washer
5	1	1109146	Shim Set Thrust Washer
6	1	3101416	Mach End Cap
7	1	6200002	Grease Fitting
8	8	F0620070	Socket Head Capscrew M20 x 2.50 x 70
9	8	F0612020	Socket Head Capscrew M12 x 1.75 x 30
10	1	S0190238	O-Ring
11	1	1109147	Mach Tie Rod Nut

* Part number is Serial Number specific. For replacement parts call the Genesis Parts Department.

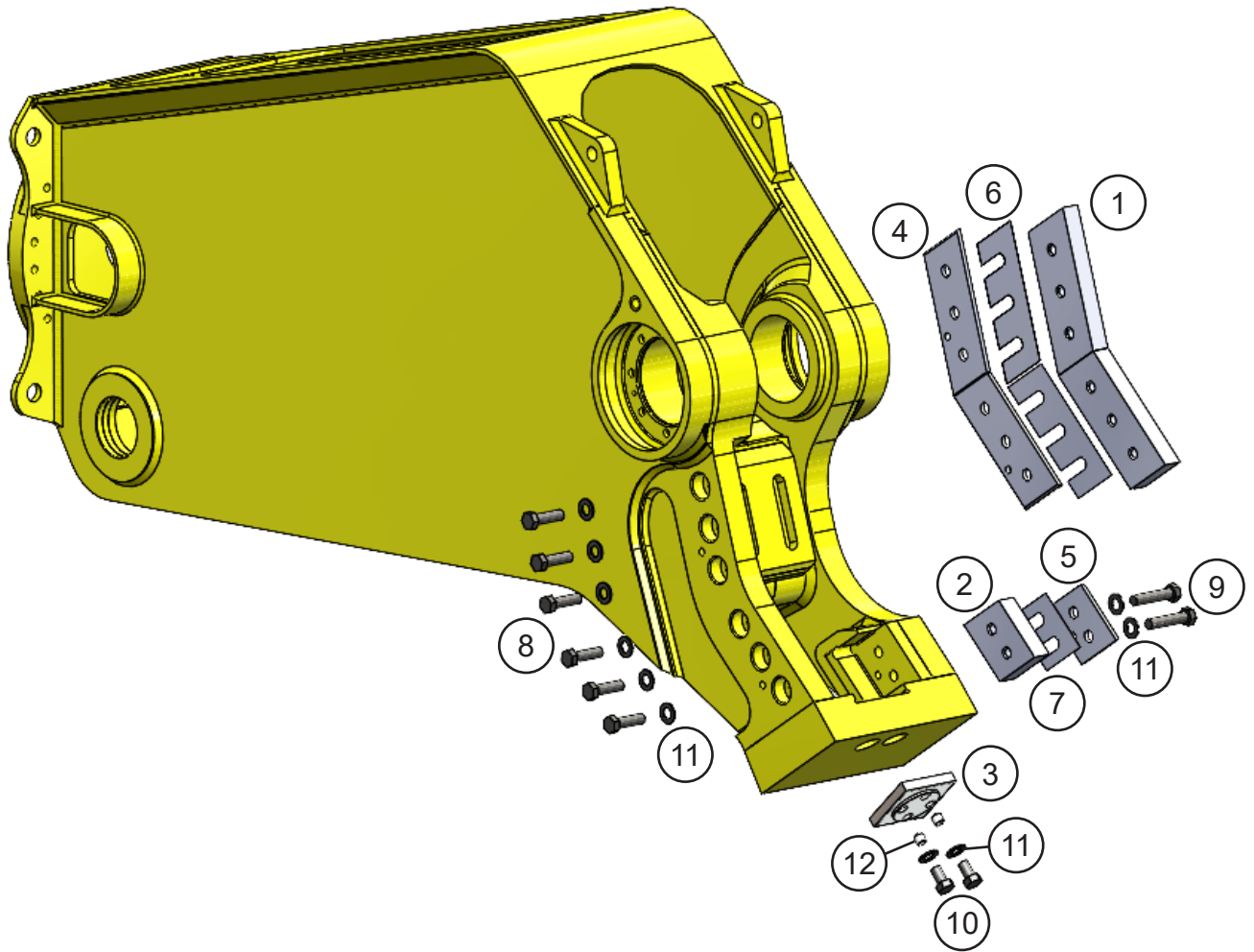
USA

715-395-3488

Europe

+49 83 31 9 25 98 0

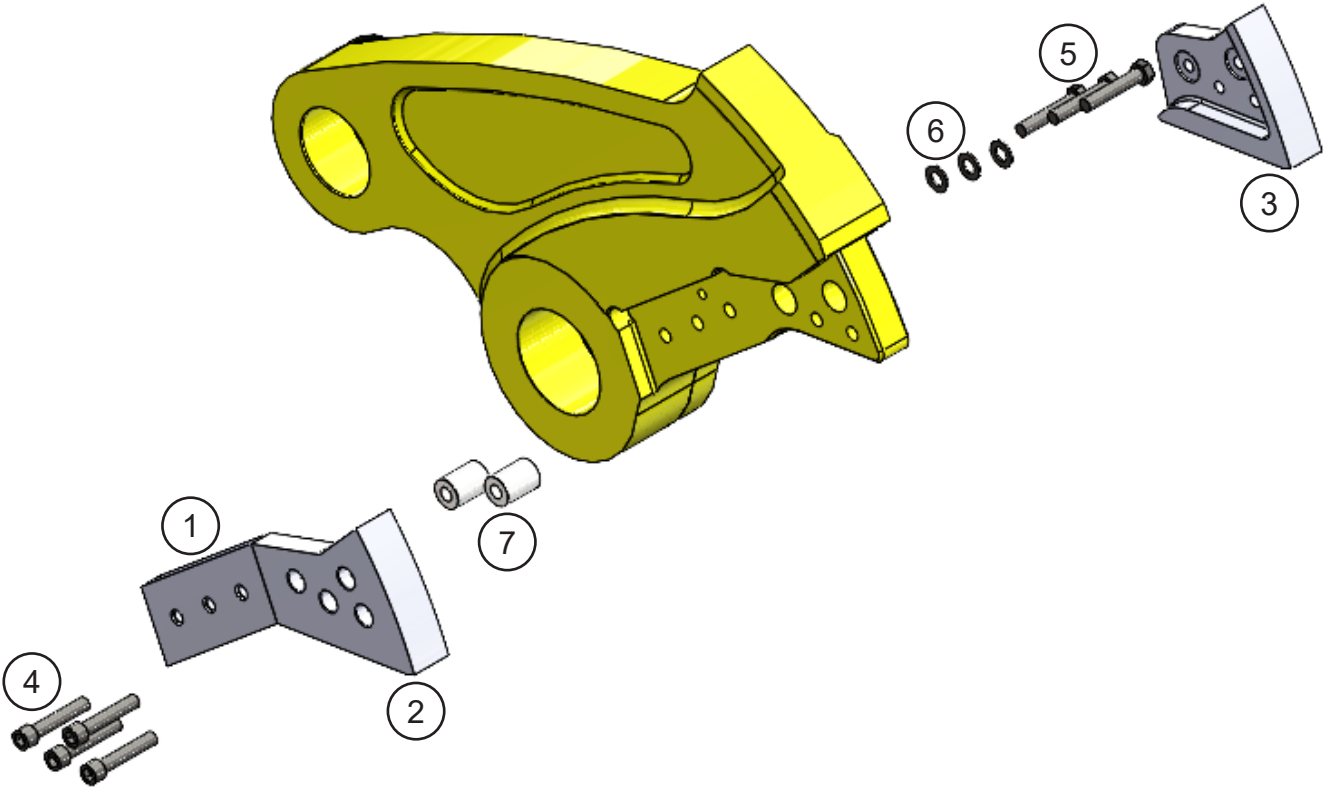
ASSEMBLY LOWER BLADES



ASSEMBLY LOWER BLADES

ITEM	QTY	PART NUMBER	DESCRIPTION
1	2	3101338	Mach Blade
2	1	3101344	Mach Guide Blade
3	1	3100511	Mach Blade Razor
4	2	3101349	Mach Blade Adjustment Plate
5	1	3101350	Mach Guide Blade Adjustment Plate
6	2	3101346	Shim Set Blade
7	1	3101348	Shim Set Guide Blade
8	6	F0288300	Hex Head Capscrew $\frac{7}{8}$ - 9 x 3
9	2	F0288400	Hex Head Capscrew $\frac{7}{8}$ - 9 x 4
10	2	F0288150	Hex Head Capscrew $\frac{7}{8}$ - 9 x 1.50
11	10	F1300088	Flat Washer $\frac{7}{8}$
12	2	F2588088	Set Screw $\frac{7}{8}$ - 9 x $\frac{7}{8}$

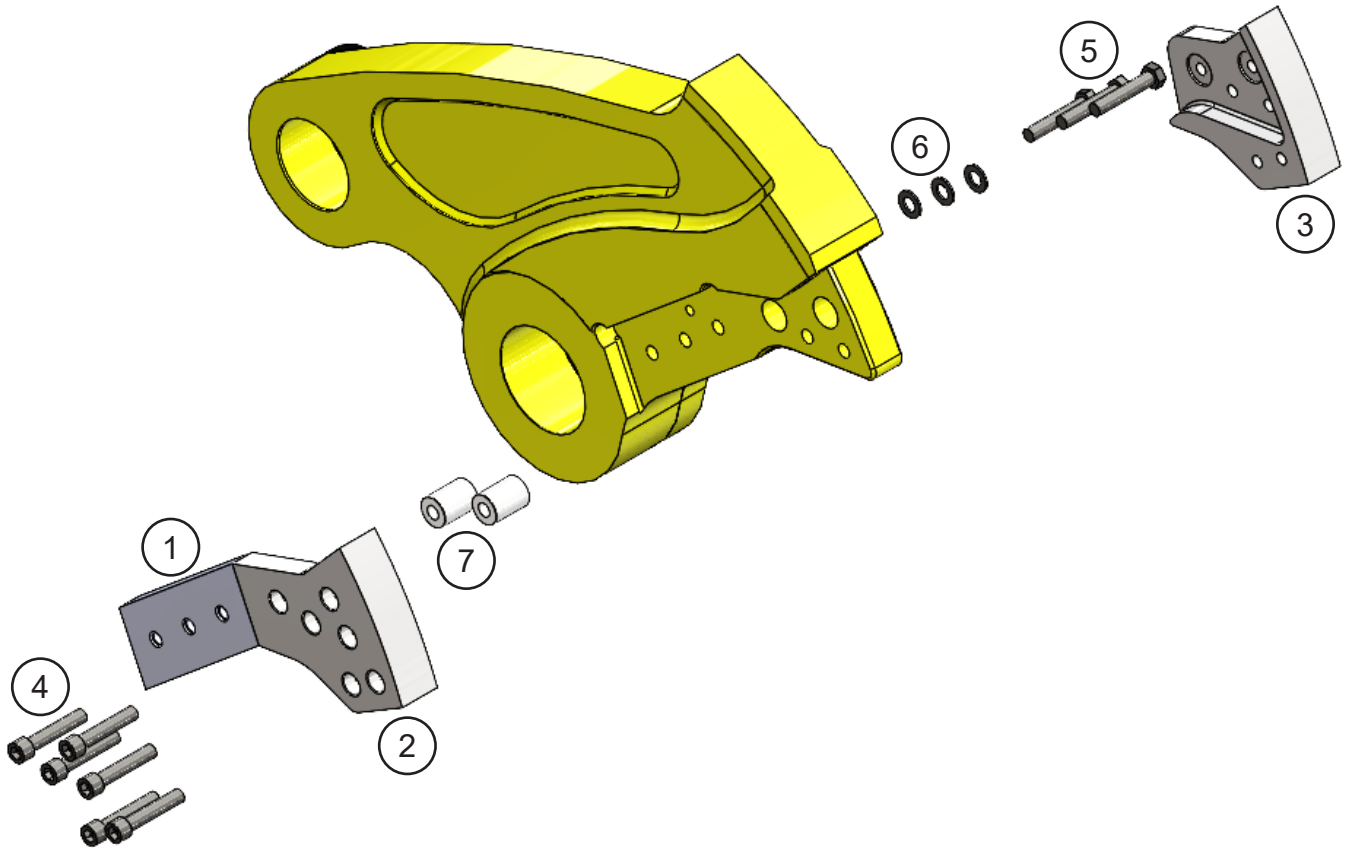
ASSEMBLY UPPER BLADES - STEEL TIPS



ASSEMBLY UPPER BLADES - STEEL TIPS

ITEM	QTY	PART NUMBER	DESCRIPTION
1	1	3101338	Mach Blade
2	1	3101341	Mach Blade Steel Tip RH
3	1	3101342	Mach Blade Steel Tip LH
4	4	F0788450	Socket Head Capscrew $\frac{7}{8}$ - 9 x 4 $\frac{1}{2}$
5	3	F0288450	Hex Head Capscrew $\frac{7}{8}$ - 9 x 4 $\frac{1}{2}$
6	3	F1300088	Flat Washer $\frac{7}{8}$
7	2	3101343	Mach Fuse

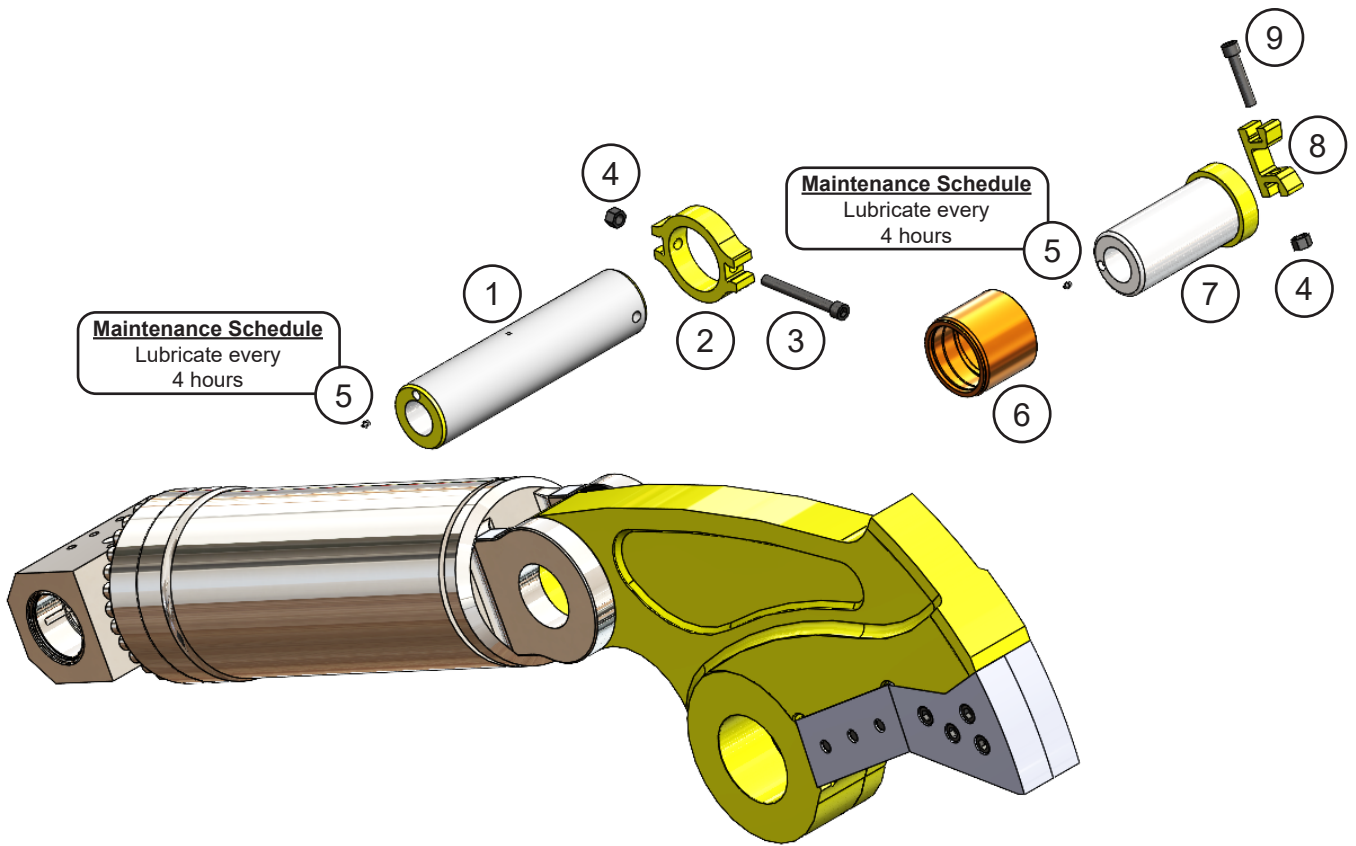
ASSEMBLY UPPER BLADES - CONCRETE TIPS



ASSEMBLY UPPER BLADES - CONCRETE TIPS

ITEM	QTY	PART NUMBER	DESCRIPTION
1	1	3101338	Mach Blade
2	1	3101339	Mach Blade Concrete Tip RH
3	1	3101340	Mach Blade Concrete Tip LH
4	6	F0788450	Socket Head Capscrew $\frac{7}{8}$ - 9 x 4 $\frac{1}{2}$
5	3	F0288450	Hex Head Capscrew $\frac{7}{8}$ - 9 x 4 $\frac{1}{2}$
6	3	F1300088	Flat Washer $\frac{7}{8}$
7	2	3101343	Mach Fuse

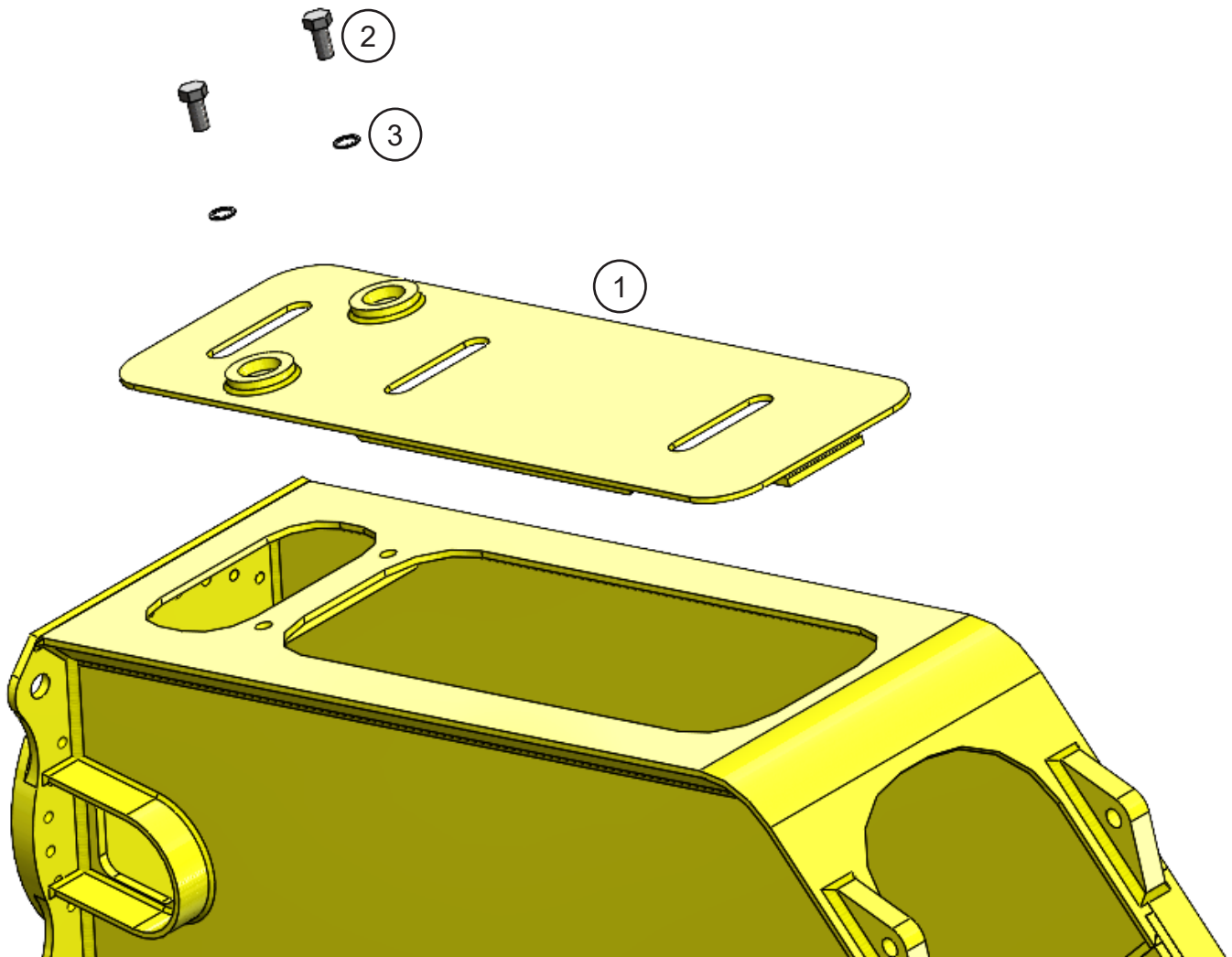
ASSEMBLY CYLINDER PINS



ASSEMBLY CYLINDER PINS

ITEM	QTY	PART NUMBER	DESCRIPTION
1	1	3101418	Mach Rear Cylinder Pin
2	1	1103607	Mach Pin Keeper Rear
3	1	F0620180	Socket Head Capscrew M20 x 2.50 x 180
4	2	F1020250	Nylock Hex Nut M20 x 2.50
5	2	6200002	Grease Fitting
6	1	3100133	Mach Bearing Upper Cylinder Connection
7	1	3500637	Wldt Front Cylinder Pin
8	1	3500350	Mach Pin Keeper (Clevis)
9	1	F0620100	Socket Head Capscrew M20 x 2.50 x 100

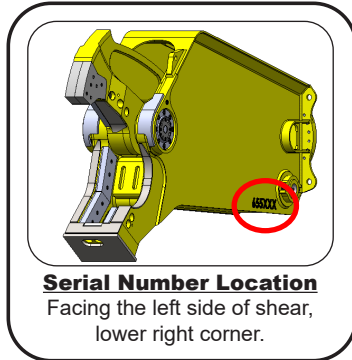
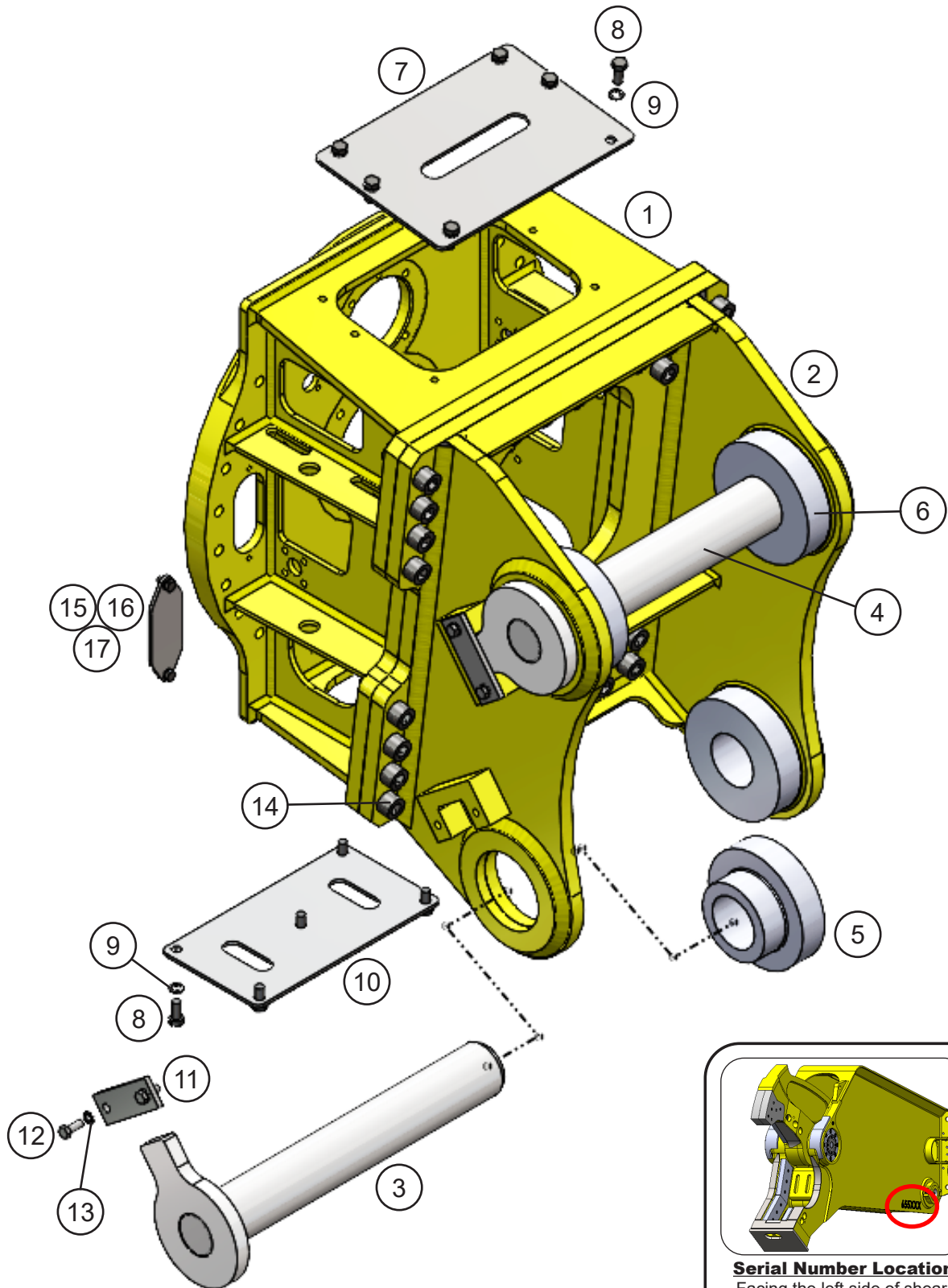
ASSEMBLY ACCESS COVERS



ASSEMBLY ACCESS COVERS

ITEM	QTY	PART NUMBER	DESCRIPTION
1	1	3101422	Wldt Cover
2	2	F0124050	Hex Head Capscrew M24 x 3 x 50
3	2	F1900100	Nordlock Washer M25

ASSEMBLY SUB-HEAD AND LUGS



ASSEMBLY SUB-HEAD AND LUGS

ITEM	QTY	PART NUMBER	DESCRIPTION
1	1	5519128	Mach Sub Head
2	1	*	Mach Lugs
3	1	*	Wldt Pin (Stick Connection)
4	1	*	Wldt Pin (Bucket Cyl. Connection)
5	2	*	Mach Spacer Sleeve (Stick Connection)
6	2	*	Mach Spacer Sleeve (Bucket Cyl. Connection)
7	1	5519153	Plt Top Cover
8	11	F0114030	Hex Head Capscrew M14 x 2.0 x 30
9	11	F1900056	Washer Nordlock 14mm
10	1	5519154	Plt Bottom Cover
11	2	5500752	Plt Strap
12	4	F0112030	Hex Head Capscrew M12 x 1.75 x 30
13	4	F1401200	Lock Washer M12
14	34	F0624060	Hex Head Capscrew M24 x 3.0 x 60
15	2	5519155	Plt Ring Bolt Cover
16	4	F0110020	Hex Head Capscrew M10 x 1.5 x 20
17	4	F1900040	Washer Nordlock 10mm

* Part numbers are Serial Number specific. For replacement parts call the Genesis Parts Department.

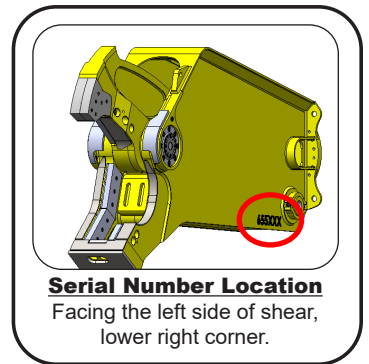
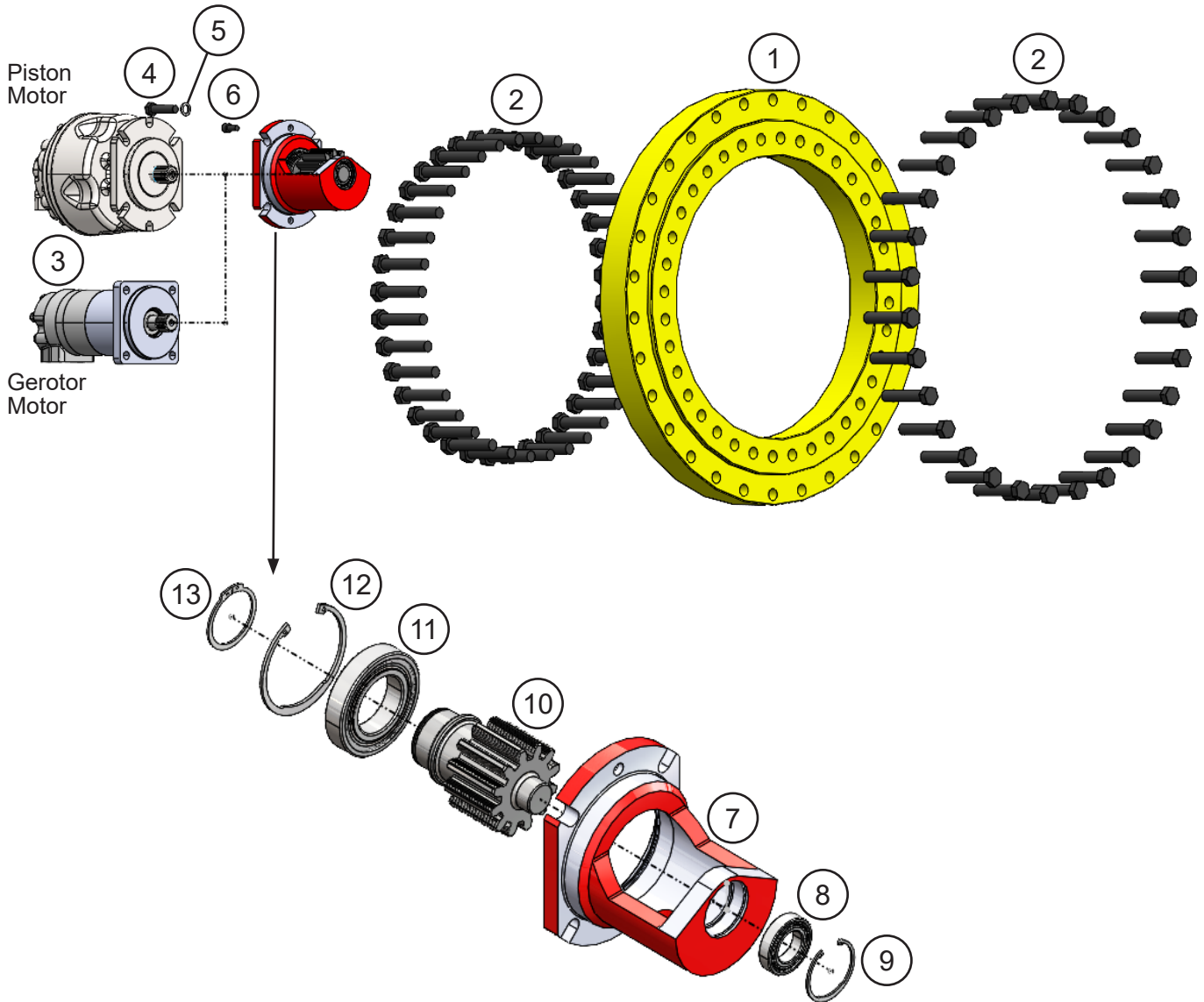
USA

715-395-3488

Europe

+49 83 31 9 25 98 0

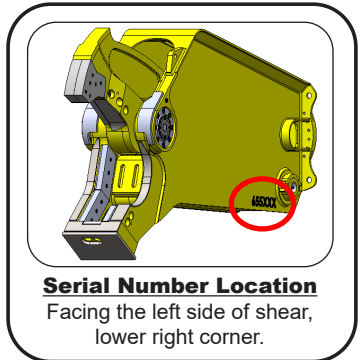
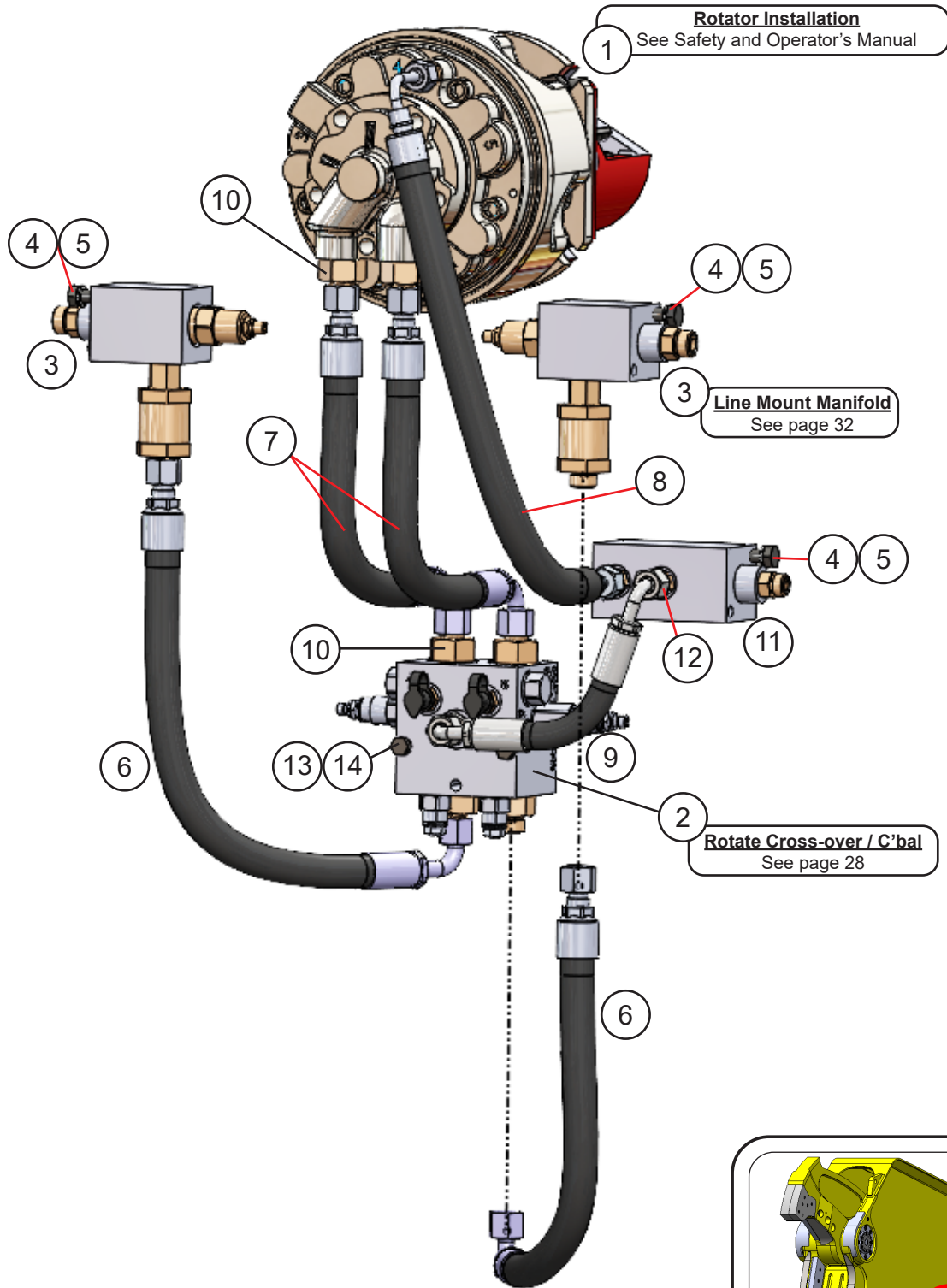
ASSEMBLY ROTATION



ASSEMBLY ROTATION

ITEM	QTY	PART NUMBER	DESCRIPTION
1	1	6100092	Slewing Ring
2	66	F0120100	Hex Head Capscrew M20 x 2.5 x 100
3	1	6340016	Piston Motor
		6380223	Gerotor Motor
4	4	F0114055	Hex Head Capscrew M14 x 2.0 x 55
5	4	F1900056	Washer Nordlock 14mm
6	2	F0610020	Socket Head Capscrew M10 x 1.5 x 20
7	1	6380220	Mach Motor Shaft Extension Housing
8	1	6302680	Bearing
9	1	6200094	Snap Ring
10	1	6380221	Pinion
11	1	6302681	Bearing
12	1	6200093	Snap Ring
13	1	6200095	Snap Ring

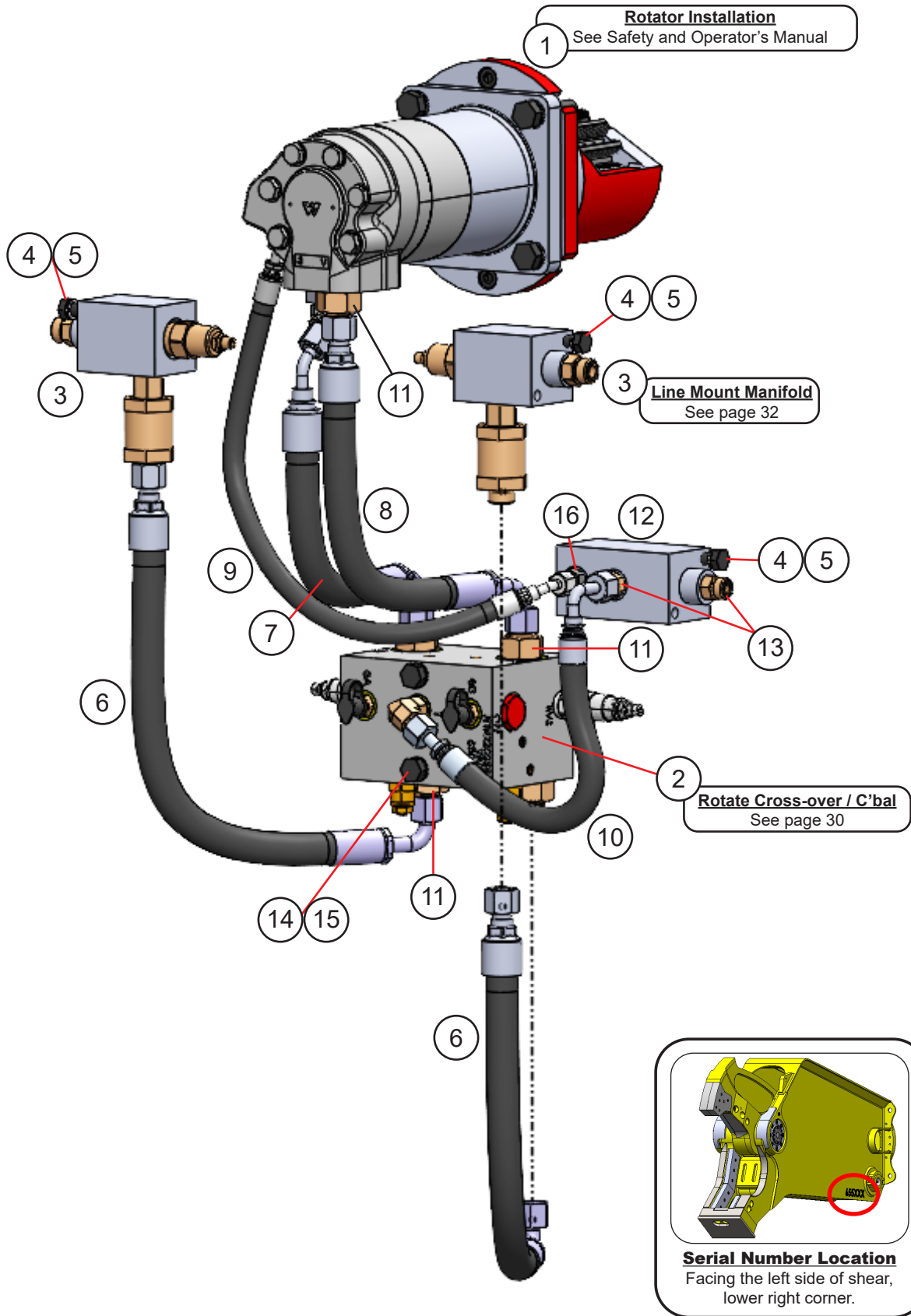
ASSEMBLY ROTATION CIRCUIT - PISTON MOTOR



ASSEMBLY ROTATION CIRCUIT - PISTON MOTOR

ITEM	QTY	PART NUMBER	DESCRIPTION
1	1	See page 22	Assembly Rotation - Piston Motor
2	1	See page 28	Rotate Cross-over / C'bal - Piston Motor
3	2	See page 32	Sub-Assembly Line Mount Manifold
4	6	F0110030	Hex Head Capscrew M10 x 1.5 x 30
5	6	F1900040	Washer Nordlock 10mm
6	2	1109372	Hose
7	2	1109373	Hose
8	1	1109376	Hose
9	1	1109375	Hose
10	6	6300052	Adapter 12MB-08MO
11	1	6302661	Case Drain Manifold
12	2	6300018	Adapter 06MB-06MO
13	2	F0108090	Hex Head Capscrew M8 x 1.25 x 90
14	2	F1900031	Washer Nordlock 8mm

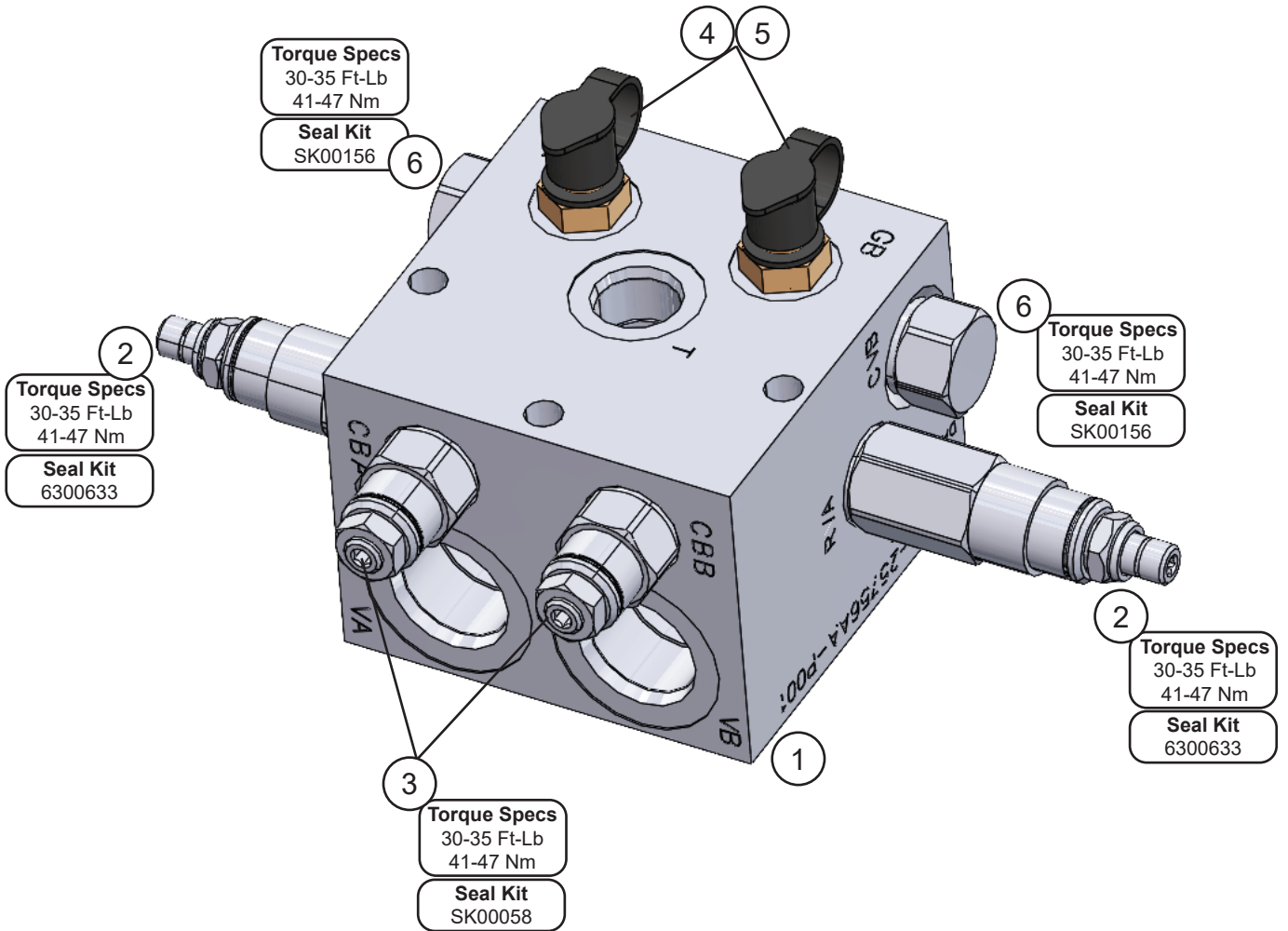
ASSEMBLY ROTATION CIRCUIT - GEROTOR MOTOR



ASSEMBLY ROTATION CIRCUIT - GEROTOR MOTOR

ITEM	QTY	PART NUMBER	DESCRIPTION
1	1	See page 22	Assembly Rotation - Gerotor Motor
2	1	See page 30	Rotate Cross-over / C'bal - Gerotor Motor
3	2	See page 32	Sub-Assembly Line Mount Manifold
4	6	F0110030	Hex Head Capscrew M10 x 1.5 x 30
5	6	F1900040	Washer Nordlock 10mm
6	1	1109372	Hose
7	1	1109625	Hose
8	1	1109373	Hose
9	1	1109629	Hose
10	1	1109375	Hose
11	5	6300052	Adapter 12MB-08MO
12	1	6302661	Case Drain Manifold
13	2	6300018	Adapter 06MB-06MO
14	2	F0112130	Hex Head Capscrew M12 x 1.75 x 130
15	2	F1900050	Washer Nordlock 12mm
16	1	6310011	Adapter 06MB-04MO

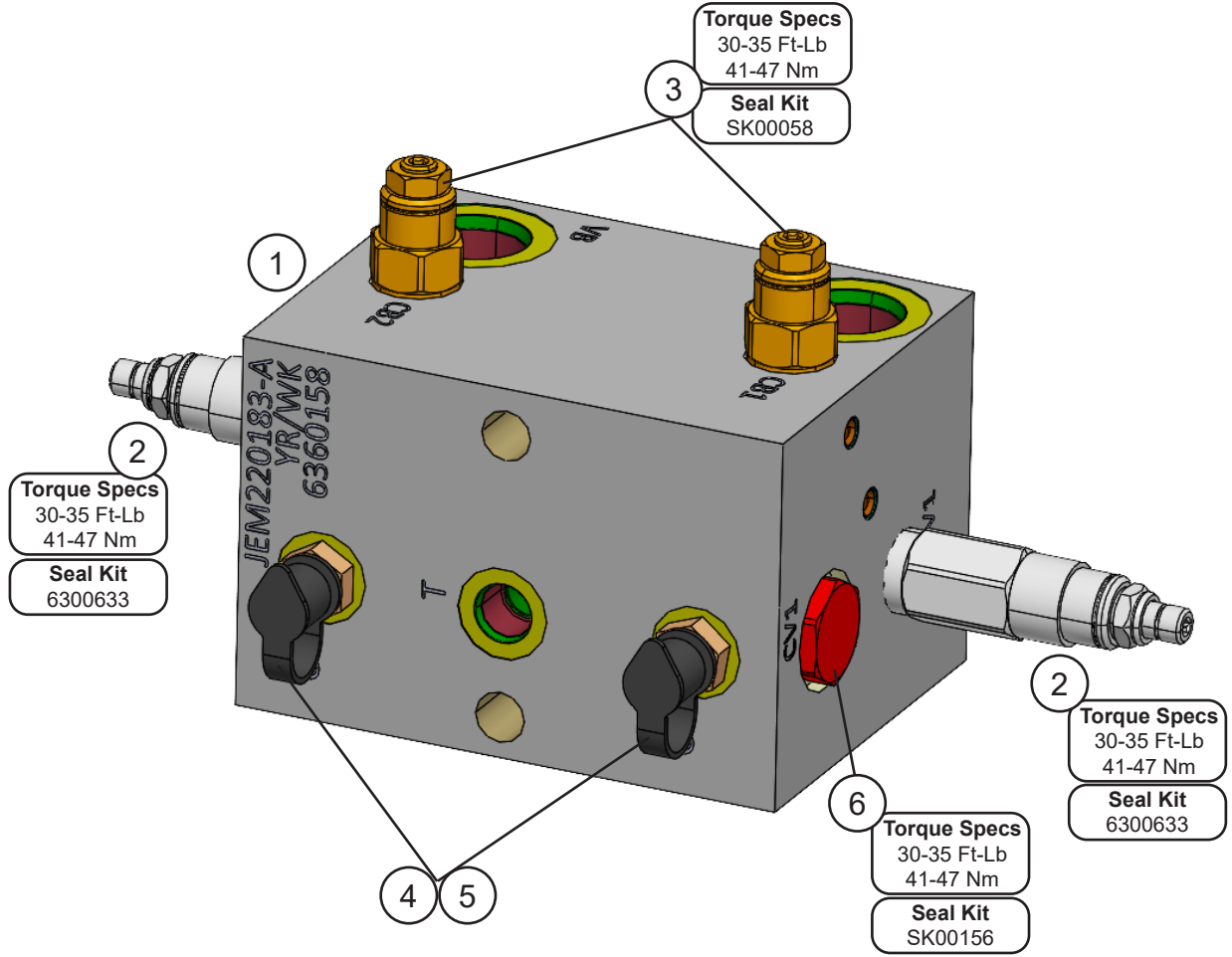
SUB-ASSEMBLY ROTATE CROSS-OVER / C'BAL - PISTON MOTOR



SUB-ASSEMBLY ROTATE CROSS-OVER / C'BAL - PISTON MOTOR

ITEM	QTY	PART NUMBER	DESCRIPTION
1	1	6360160	Valve Block
2	2	6390029	Valve Relief Seal Kit 6300633
3	2	6380035	Valve Counterbalance Seal Kit SK00058
4	2	6300014	Diagnostic Nipple
5	2	6310001	Diagnostic Nipple Dust Cap
6	2	6360088	Valve Check Seal Kit SK00156

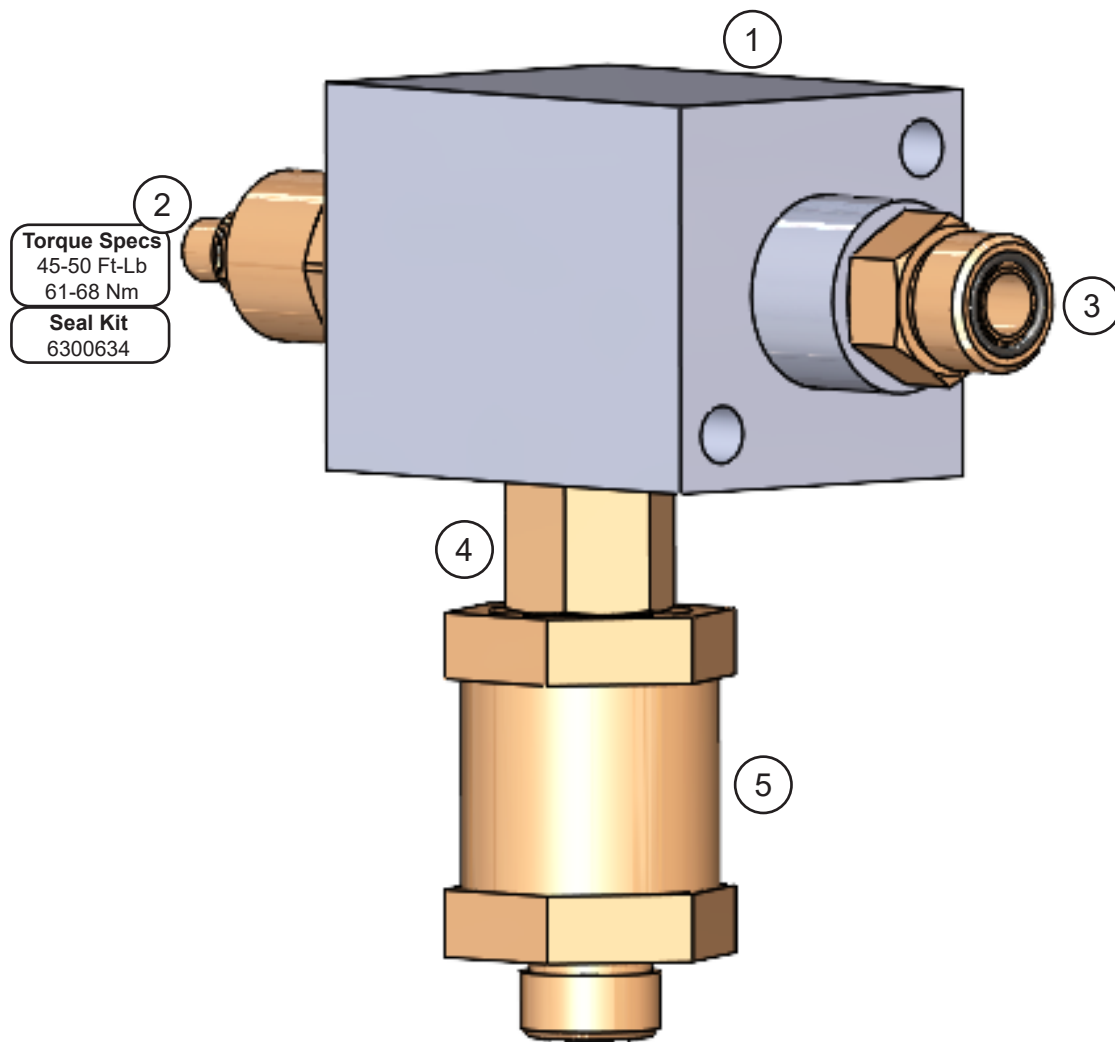
SUB-ASSEMBLY ROTATE CROSS-OVER / C'BAL - GEROTOR MOTOR



SUB-ASSEMBLY ROTATE CROSS-OVER / C'BAL - GEROTOR MOTOR

ITEM	QTY	PART NUMBER	DESCRIPTION
1	1	6360158	Valve Block
2	2	6301673	Valve Relief Seal Kit 6300633
3	2	6380225	Valve Counterbalance Seal Kit SK00058
4	2	6300014	Diagnostic Nipple
5	2	6310001	Diagnostic Nipple Dust Cap
6	2	6390028	Valve Check Seal Kit SK00271

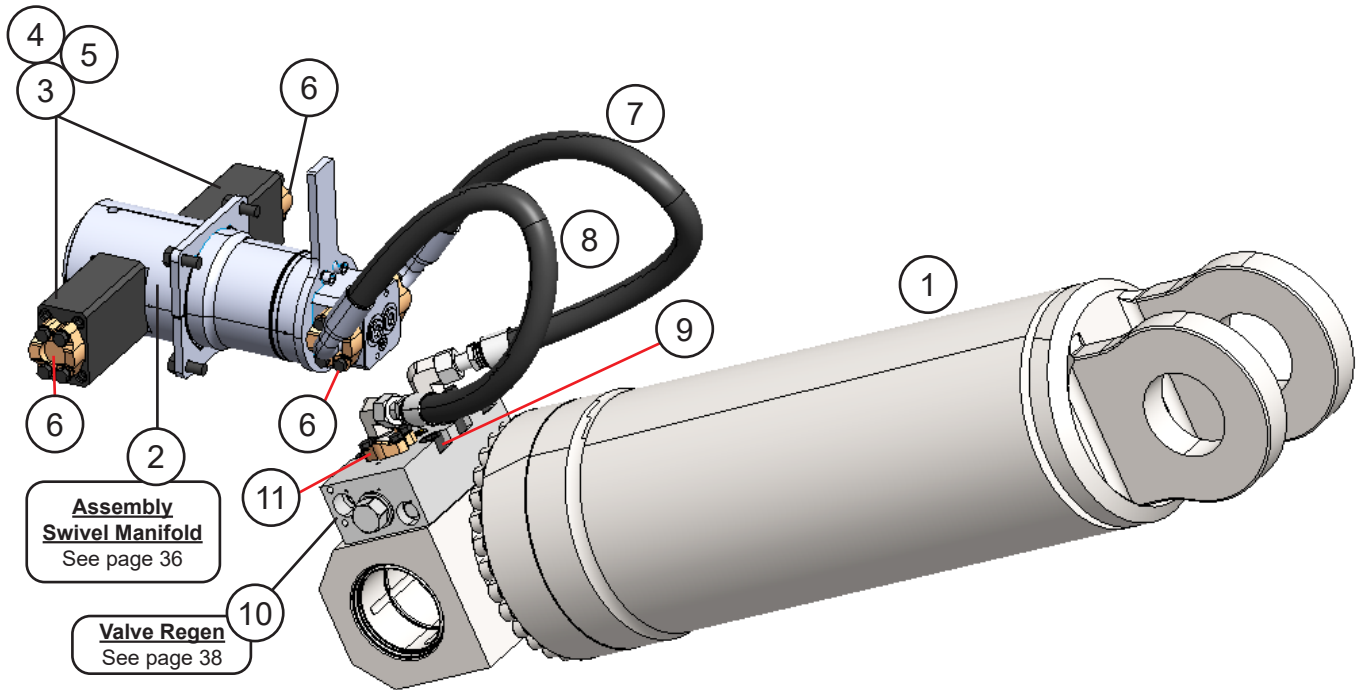
SUB-ASSEMBLY LINE MOUNT MANIFOLD



SUB-ASSEMBLY LINE MOUNT MANIFOLD

ITEM	QTY	PART NUMBER	DESCRIPTION
1	1	6302658	Valve Line Body
2	1	6300361	Valve Flow Control Seal Kit 6300634
3	1	6310050	Adapter Bulkhead 08MB-08MO
4	1	6310183	Adapter 08MB-08MB
5	1	6300364	Filter

ASSEMBLY OPEN AND CLOSE CIRCUIT



ASSEMBLY OPEN AND CLOSE CIRCUIT

ITEM	QTY	PART NUMBER	DESCRIPTION
1	1	*	Assembly Cylinder
2	1	See page 36	Assembly Swivel Manifold
3	2	5519146	Mach Port Block
4	8	F0612170	Socket Head Capscrew M12 x 1.75 x 170
5	4	S0190219	O-Ring
6	5	1" Split Flange Kit - Code 62	
	2	H0262100	Split Flange Half 1.00 Code 62
	4	F0110050	Hex Head Capscrew M10 x 1.5 x 50
	4	F1401000	Lock Washer M10
	1	S0190219	O-Ring
7	1	3101437	Hose
8	1	3101436	Hose
9	6	F0620100	Socket Head Capscrew M20 x 2.50 x 100
10	1	See page 38	Valve Regen
11	2	1" Split Flange Kit - Code 61	
	2	H0261100	Split Flange Half 1.00 Code 61
	4	F0110035	Socket Head Capscrew M10 x 1.50 x 35
	4	F1401000	Lock Washer M10
	1	S0190219	O-Ring

* Part number is Serial Number specific. For replacement parts call the Genesis Parts Department. The cylinder Serial Number is required to order a cylinder seal kit.

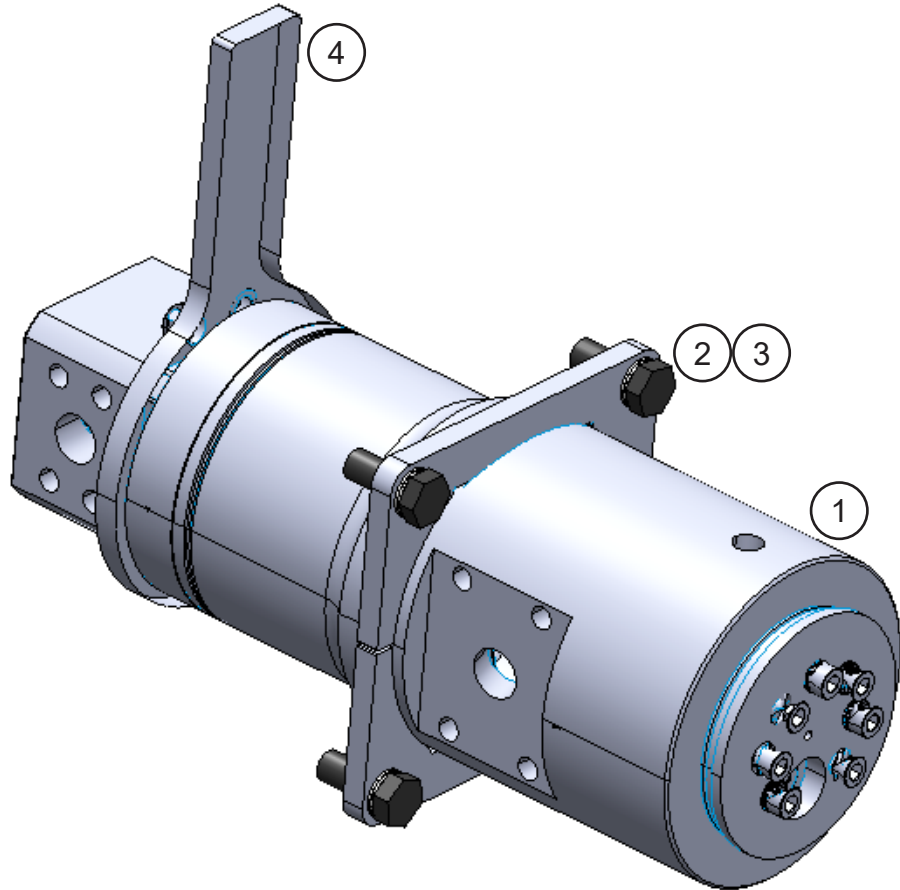
USA

715-395-3488

Europe

+49 83 31 9 25 98 0

ASSEMBLY SWIVEL MANIFOLD



ASSEMBLY SWIVEL MANIFOLD

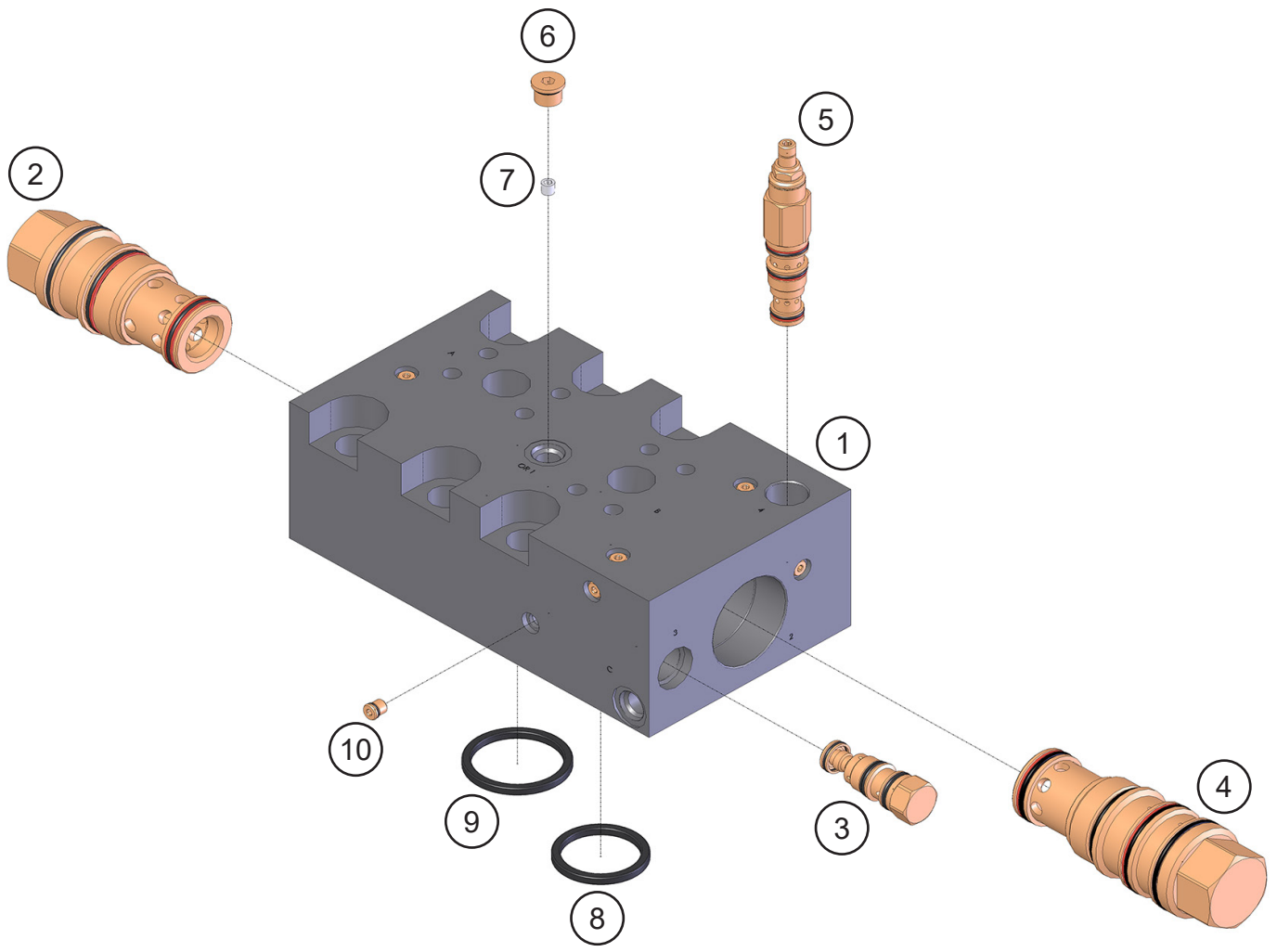
ITEM	QTY	PART NUMBER	DESCRIPTION
1	1	*	Assembly Swivel Manifold
2	4	F0116040	Hex Head Capscrew M16 x 2.0 x 40
3	4	F1900063	Washer Nordlock 16mm
4	1	*	Torque Arm Kit

* Part numbers are Serial Number specific. For replacement parts call the Genesis Parts Department.

USA
715-395-3488

Europe
+49 83 31 9 25 98 0

SUB-ASSEMBLY REGEN BLOCK



SUB-ASSEMBLY REGEN BLOCK

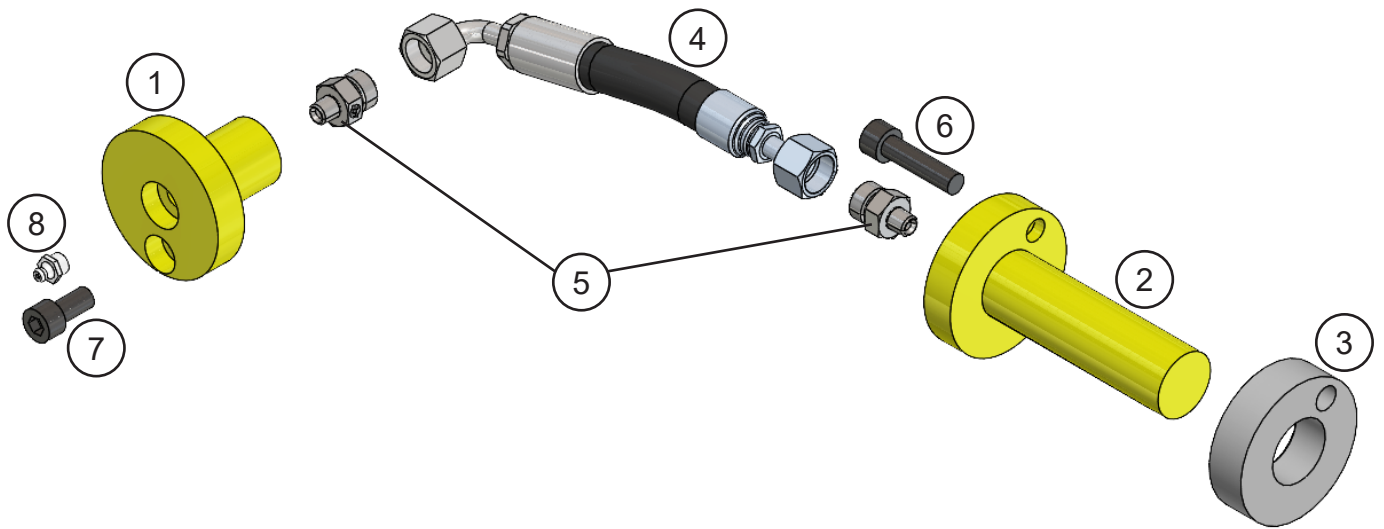
ITEM	QTY	PART NUMBER	DESCRIPTION
1	1	*	Mach Regen Manifold Seal Kit SK00047
2	1	6380088	Valve Check COJA-XGV Seal Kit SK00024
3	1	6300621	Valve Shuttle CSAB-XXV Seal Kit 6300622
4	1	6300623	Valve Logic DKJS-XHV Seal Kit 6300624
5	1	6300625	Valve PSI Reducer PRDB-LWV Seal Kit 6300622
6	1	6300153	Plug Socket Head 06MB
7	1	6300903	Mach Orifice
8	1	6300638	O-Ring 1p-3705 High PSI Seal 2.0 OD
9	1	6300723	O-Ring 1p-3705 High PSI Seal 2.25 OD
10	1	6300075	Plug Socket Head 02MB

* Part number is Serial Number specific. For replacement parts call the Genesis Parts Department.

USA
715-395-3488

Europe
+49 83 31 9 25 98 0

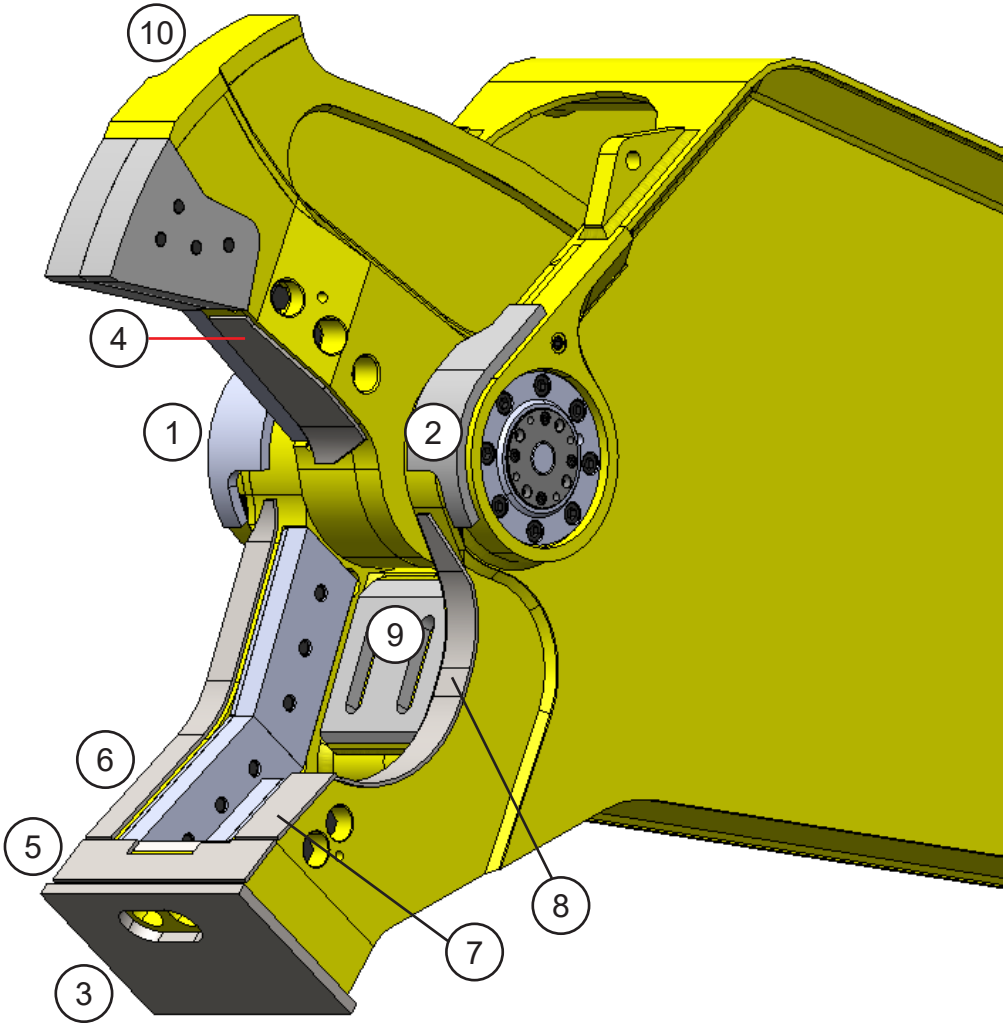
ASSEMBLY SLEWING RING LUBRICATION



ASSEMBLY SLEWING RING LUBRICATION

ITEM	QTY	PART NUMBER	DESCRIPTION
1	1	5512411	Mach Grease Bulkhead Adapter
2	1	5512419	Mach Slewing Ring Grease Adapter
3	1	3502826	Mach Spacer Slewing Ring Grease Adapter
4	1	1109374	Hose
5	2	6302679	Adapter 02MP-06MFS
6	1	F0610040	Socket Head Capscrew M10 x 1.5 x 40
7	1	F0610020	Socket Head Capscrew M10 x 1.5 x 20
8	1	6200002	Grease Fitting

SHEAR JAW ARMOR® AND WEAR PLATES



SHEAR JAW ARMOR® AND WEAR PLATES

ITEM	QTY	PART NUMBER	DESCRIPTION
1	1	3101419	Wrap Guard RH
2	1	3101420	Wrap Guard LH
3	1	3101428	Jaw Armor Chin Front
4	1	3101429	Jaw Armor Upper
5	1	3101431	Jaw Armor Chin Top
6	1	3101430	Jaw Armor Lower Blade Side
7	1	3101432	Jaw Armor Guide Seat
8	1	3101433	Jaw Armor Guide Side
9	1	3101394	Trash Plate Guard
10	1	3101413	Rhino Horn

BOLT TORQUE SPECIFICATIONS

Reference the product Thread Treatment Diagrams on page 45 to determine whether to use wet or dry torque values for specific bolts.

Reference Procedures on page 46 for threadlocker or anti-seize application and bolt and bolt hole cleaning.

Prior to torquing, clean all bolt holes, bolts and nuts to remove dirt, grease and oil, and identify bolt type.

Never re-torque bolts that use Loctite. If a bolt becomes loose or damaged after the initial use when Loctite was applied and the bolt was torqued, the bolt must be replaced.

Never break tightened bolts loose with a torque wrench. Doing so may break the torque wrench or take it out of calibration.

Torque wrenches should be calibrated on an annual basis.

When using a torque multiplier with a torque wrench, incorrect settings will be multiplied by the ratio of the torque wrench.

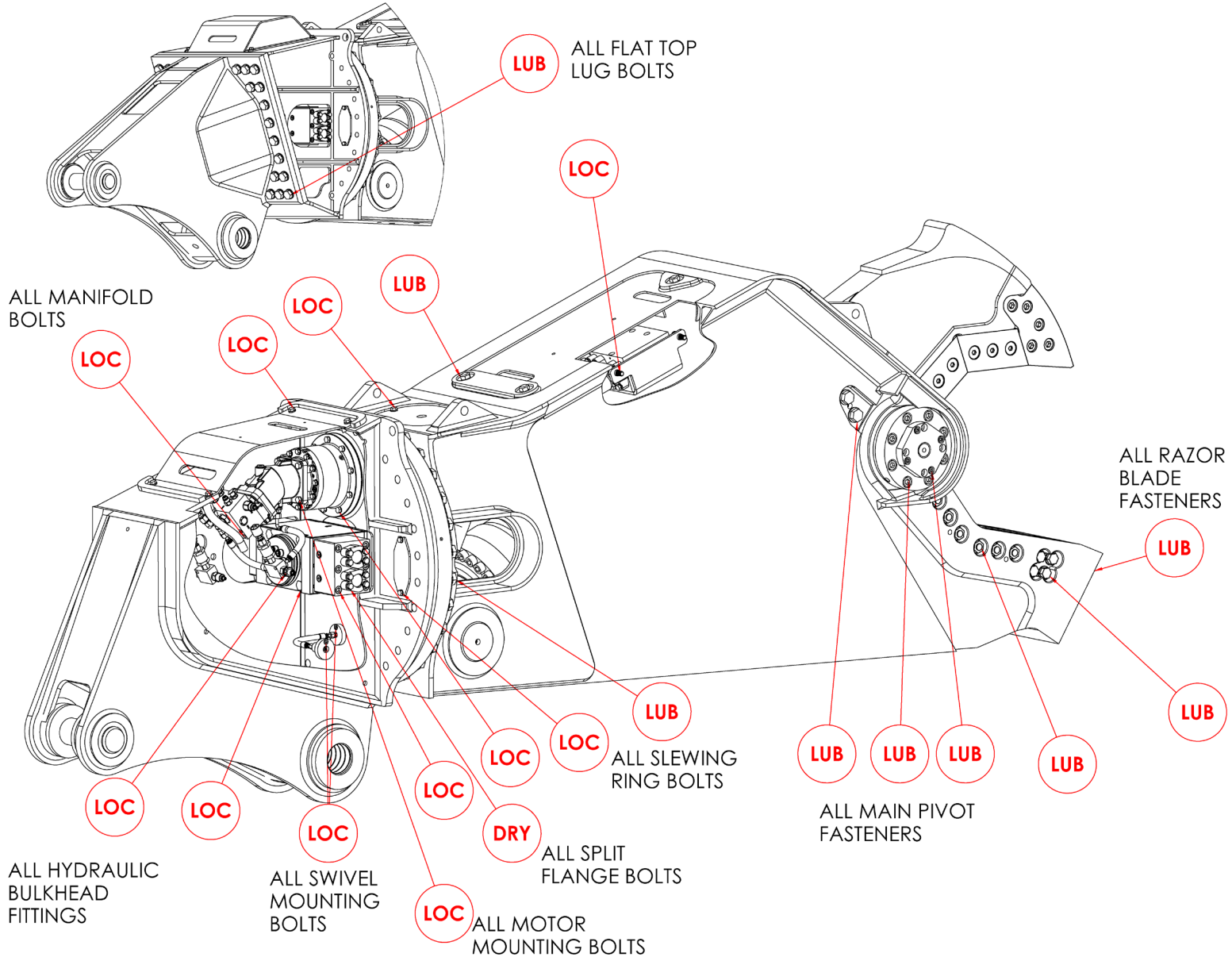
Never use an impact driver on a torque multiplier.

THREAD TREATMENT DIAGRAM

Mobile Shears

Use this diagram to determine what thread treatment, if any, is required for each fastener.

For thread treatment application procedures, see page 46. For prescribed torque values, see page 48.



PROCEDURES

Reference the product Thread Treatment Diagrams on page 45 to determine which of the following procedures is required.

Cleaning

To ensure proper performance of thread treatment and accurate torque values, clean and degrease **all internal and external threads** prior to application of threadlocker, anti-seize or primer and before installation of hardware.

- Ensure both internal and external threads are free of dirt or debris.
- Use brake cleaner or similar cleaning solvent on all threads to remove any grease or oil.
- Allow threads to dry.

NOTICE

Failure to properly clean threads will cause threadlocker, primer, and/or anti-seize to not properly cure!

LOC

Threadlocker

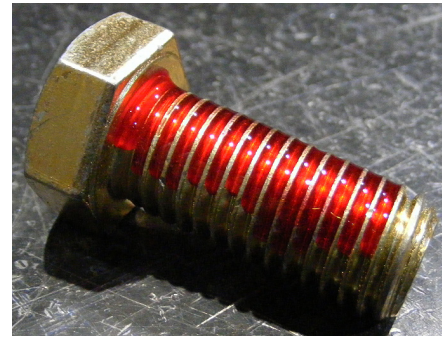
For bolted connections requiring threadlocker, use **Loctite 263** or equivalent applied using the following procedure:

- Clean and degrease all threads.
- For thru holes or nuts, apply threadlocker to bolt threads.
- For blind holes, apply stripe of threadlocker along the length of the hole (applying to the bolt can cause escaping air to remove threadlocker as the bolt is inserted).
- Torque bolt to specified **Wet Torque Value**, see page 48.

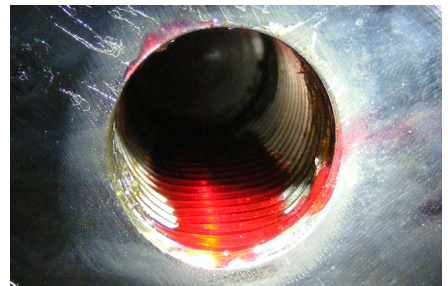
For threaded hydraulic fitting connections, use **Loctite 5452** or equivalent thread sealant in conjunction with **Loctite 7471** primer using the following procedure:

- Clean and degrease all threads.
- Apply Loctite 7471 primer to both external and internal threads and allow to dry.
- Apply threadlocker to 360 degrees of the threads on the male fitting, ensuring adequate coverage.
- Assemble fitting per directions in operator's manual.
- For O-ring boss and flat face O-ring connections, torque fittings to values specified on page 49.

Threadlocker



Blind Hole



Hydraulic Fitting



PROCEDURES

LUB

Anti-Seize

For bolted connections requiring anti-seize lubrication, use **Loctite LB8008** or equivalent using the following procedure:

- Clean and degrease all threads.
- Apply thin coat of anti-seize to internal and external threads and under bolt head and/or nut, ensuring complete coverage.
- Torque bolt to specified **Wet Torque Value**, see page 48.

Anti-Seize

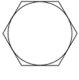
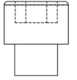


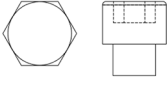
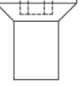
DRY

No Thread Treatment

- Clean and degrease all threads.
- Torque bolt to specified **Dry Torque Value**, see page 48.

BOLT TORQUE SPECIFICATIONS

Dry Torque Values					
		Hex/Socket Head		Flat Head	
					
Fastener Grade	Size x Pitch	Nm	Ft-lb	Nm	Ft-lb
CL 10.9	M8 x 1.25	35	26	27	20
	M10 x 1.50	71	53	58	42
	M12 x 1.75	124	92	101	73
	M14 x 1.50	200	148	163	118
	M14 x 2.00	200	148	163	118
	M16 x 2.00	311	230	254	184
	M20 x 1.50	610	450	498	360
	M20 x 2.50	608	449	497	359
	M24 x 3.00	1054	778	861	622
	M27 x 3.00	1543	1138	1260	910
	M30 x 3.50	2095	1545	1712	1236
	M36 x 4.00	3659	2699	2991	2159
8	1/4-20	14	11	11	8
	5/16-18	32	24	26	19
	3/8-16	59	44	48	35
	7/16-14	94	70	77	56
	1/2-13	143	106	116	84
	1/2-20	162	120	133	96
	5/8-11	287	212	234	169
	3/4-10	509	376	415	300
	7/8-9	821	606	670	484
	1.00-8	1232	909	1007	727
	1.00-14	1383	1020	1130	816
	1.25-7	2463	1817	2013	1453
8/L9	1.50-6	4287	3162	3504	2529

Wet Torque Values					
		Hex/Socket Head		Flat Head	
					
Fastener Grade	Size x Pitch	Nm	Ft-lb	Nm	Ft-lb
CL 10.9	M8 x 1.25	29	22	23	17
	M10 x 1.50	61	45	49	36
	M12 x 1.75	105	78	85	62
	M14 x 1.50	150	111	121	88
	M14 x 2.00	170	126	138	100
	M16 x 2.00	265	196	216	156
	M20 x 1.50	456	337	372	269
	M20 x 2.50	517	382	422	305
	M24 x 3.00	894	660	731	528
	M27 x 3.00	1312	968	1072	774
	M30 x 3.50	1779	1312	1453	1049
	M36 x 4.00	3110	2294	2542	1835
8	1/4-20	13	10	11	8
	5/16-18	27	20	22	16
	3/8-16	50	37	40	29
	7/16-14	80	59	65	47
	1/2-13	122	90	99	72
	1/2-20	138	102	112	81
	5/8-11	244	180	199	144
	3/4-10	433	320	354	256
	7/8-9	698	515	570	412
	1.00-8	1046	772	854	617
	1.00-14	1175	867	960	693
	1.25-7	2095	1545	1712	1236
8/L9	1.50-6	3644	2688	2979	2150

O-RING BOSS & FLAT FACE O-RING TORQUE SPECIFICATIONS

O-Ring Boss Torque Values		
Size Dash	Nm	Ft-lb
-4	22	16
-5	27	20
-6	36	26
-8	83	60
-10	110	80
-12	187	135
-14	249	180
-16	304	220
-20	387	280
-24	498	360

Flat Face O-Ring Torque Values		
Size Dash	Nm	Ft-lb
-4	18	13
-6	30	22
-8	60	44
-10	85	62
-12	121	88
-14	121	88
-16	160	116
-20	213	154
-24	274	198

BOLT DRIVE SPECIFICATIONS

Thread Size x Pitch	Hex Head	Socket Head	Flat Head
			
Wrench/Drive Size			
M8 x 1.25	13mm	6mm	5mm
M10 x 1.50	17mm	8mm	6mm
M12 x 1.75	19mm	10mm	8mm
M14 x 1.50	22mm	12mm	10mm
M14 x 2.00	22mm	12mm	10mm
M16 x 2.00	24mm	14mm	10mm
M20 x 1.50	30mm	17mm	12mm
M20 x 2.50	30mm	17mm	12mm
M24 x 3.00	36mm	19mm	14mm
M27 x 3.00	41mm	19mm	-
M30 x 3.50	46mm	22mm	-
M36 x 4.00	55mm	27mm	-
1/4-20	7/16"	3/16"	5/32"
5/16-18	1/2"	1/4"	3/16"
3/8-16	9/16"	5/16"	7/32"
7/16-14	5/8"	3/8"	1/4"
1/2-13	3/4"	3/8"	5/16"
1/2-20	3/4"	3/8"	5/16"
5/8-11	15/16"	1/2"	3/8"
3/4-10	1-1/8"	5/8"	1/2"
7/8-9	1-5/16"	3/4"	9/16"
1.00-8	1-1/2"	3/4"	5/8"
1.00-14	1-1/2"	3/4"	5/8"
1.25-7	1-7/8"	7/8"	7/8"
1.50-6	2-1/4"	1"	1"

WARRANTY

Claim Procedure

Notify the Genesis Service Department of the potential warranty claim prior to making the repair. Digital pictures are very helpful for diagnosing problems and recommending repairs.

Contact the Genesis Service Department before making alterations, changes or repairs to any component that is going to be considered for warranty. Not doing so will void all Genesis warranty consideration.

The Genesis Service Department will issue an authorization number to track the repair costs, outgoing parts, and/or defective parts returning to the factory.

Replacement parts must be ordered using a purchase order number. Shipping is standard ground. Overnight shipping is available by request, and Genesis will not cover the shipping charge.

When the repair is complete, submit an invoice to the Genesis Service Department within 30 days. Include itemized internal labor reporting, parts lists and invoices for outside contractors. Reference the authorization number on all invoices.

When returning parts for warranty consideration, include a copy of any related Genesis paperwork along with any other necessary documentation to ensure proper processing and credit. The Genesis Service Department will provide the necessary forms.

Your account will be credited when the warranty claim is accepted.

Blade Warranty

Standard warranty on blades will only be considered on the first edge, and wear on the edge must be 1/8" radius or less. Genesis does not warranty cutting blades that are cracked or broken from top to bottom (perpendicular to the long edge of the blade). Genesis also does not cover fasteners, the labor to replace wear components or collateral damage, such as blade seats, from broken blades, the piercing blade tang or adjustment plates.

Please direct any questions to the Genesis Service Department: 715-395-5252

PARTS ORDER POLICY AND PROCEDURE

Parts Orders Should Include

- Purchase order number
- Model and serial number of attachment
- Part number and quantity needed
- Shipping and billing address
- Method of shipment or required delivery date

Placing Orders

Orders may be placed by phone or e-mail. To e-mail an order, use the form on the following page or your purchase order form. Contact information is located at the front of this manual.

Part Numbers

Part numbers are listed in a separate Parts Manual or, if included, the Parts section of this manual. Contact the Genesis Parts Department with questions regarding part numbers, availability and pricing.

Shipping

All orders will be shipped best way surface unless an alternate shipping method is requested. Shipping charges are not included in the purchase price of parts.

Invoices

All invoices are due upon receipt. Any accounts with invoices open beyond 60 days are subject to review and may be placed on C.O.D. status without further notice.

Returns

Many unused Genesis parts may be returned with proper documentation. Return shipping is the responsibility of the purchaser. Credit will be issued upon return, less a 25% restocking fee. Documentation is required for credit of returned parts. Contact the Genesis Service Department at 715-395-5252 for an RGA (Return Goods Authorization) number and form. An RGA must accompany every return. Items shipped without an RGA may be returned to sender.

Warranty Returns

All parts returned to Genesis for warranty consideration must be returned with a completed RGA (Return Goods Authorization) provided by the Genesis Service Department. The form needs to be completed in its entirety, including any additional information requested by the Service Department. Return shipping is the responsibility of the sender and will be credited upon claim approval. A determination to accept or deny the claim will be made based upon the information available to Genesis. Warranty on purchased parts other than wear components is 6 months. Genesis does not cover labor costs to replace purchased parts replaced under warranty. There is no warranty period on wear parts or components.

PARTS ORDER FORM

Customer: _____ Date: _____

Phone: _____ Contact: _____

Shipping Address: _____ E-mail: _____

Billing Address: __________

Purchase Order: _____ Shipping Method: _____

Model: _____ Serial Number: _____

Quantity	Part Number	Description	Price

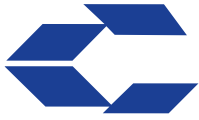
E-mail to the Genesis Parts Department: genesisparts@genesisattachments.com
For assistance, call 715-395-5252

INDEX

- 1" Split Flange Kit - Code 61 35
- 1" Split Flange Kit - Code 62 35
- 1103607 Mach Pin Keeper Rear 17
- 1109145 Mach Thrust Washer 7, 9
- 1109146 Shim Set Thrust Washer 7, 9
- 1109147 Mach Tie Rod Nut 7, 9
- 1109372 Hose 25, 27
- 1109373 Hose 25, 27
- 1109374 Hose 41
- 1109375 Hose 25, 27
- 1109376 Hose 25
- 1109625 Hose 27
- 1109629 Hose 27
- 3100133 Mach Bearing Upper Cylinder Connection 17
- 3100511 Mach Blade Razor 11
- 3101338 Mach Blade 11, 13, 15
- 3101339 Mach Blade Concrete Tip RH 15
- 3101340 Mach Blade Concrete Tip LH 15
- 3101341 Mach Blade Steel Tip RH 13
- 3101342 Mach Blade Steel Tip LH 13
- 3101343 Mach Fuse 13, 15
- 3101344 Mach Guide Blade 11
- 3101346 Shim Set Blade 11
- 3101348 Shim Set Guide Blade 11
- 3101349 Mach Blade Adjustment Plate 11
- 3101350 Mach Guide Blade Adjustment Plate 11
- 3101394 Trash Plate Guard 43
- 3101413 Rhino Horn 43
- 3101414 Mach Bearing RH 7
- 3101415 Mach Bearing LH 9
- 3101416 Mach End Cap 7, 9
- 3101418 Mach Rear Cylinder Pin 17
- 3101419 Wrap Guard RH 43
- 3101420 Wrap Guard LH 43
- 3101422 Wldt Cover 19
- 3101428 Jaw Armor Chin Front 43
- 3101429 Jaw Armor Upper 43
- 3101430 Jaw Armor Lower Blade Side 43
- 3101431 Jaw Armor Chin Top 43
- 3101432 Jaw Armor Guide Seat 43
- 3101433 Jaw Armor Guide Side 43
- 3101436 Hose 35
- 3101437 Hose 35
- 3101438 Mach Tie Rod 7
- 3101443 Demo Pivot Thrust Washer Half 7
- 3500350 Mach Pin Keeper (Clevis) 17
- 3500637 Wldt Front Cylinder Pin 17
- 3502826 Mach Spacer Slewing Ring Grease Adapter 41
- 5500752 Plt Strap 21
- 5512411 Mach Grease Bulkhead Adapter 41
- 5512419 Mach Slewing Ring Grease Adapter 41
- 5519128 Mach Sub Head 21
- 5519146 Mach Port Block 35
- 5519153 Plt Top Cover 21
- 5519154 Plt Bottom Cover 21
- 5519155 Plt Ring Bolt Cover 21
- 6100092 Slewing Ring 23
- 6200002 Grease Fitting 7, 9, 17, 41
- 6200093 Snap Ring 23
- 6200094 Snap Ring 23
- 6200095 Snap Ring 23
- 6300014 Diagnostic Nipple 29, 31
- 6300018 Adapter 06MB-06MO 25, 27
- 6300052 Adapter 12MB-08MO 25, 27
- 6300075 Plug Socket Head 02MB 39
- 6300153 Plug Socket Head 06MB 39
- 6300361 Valve Flow Control 33
- 6300364 Filter 33
- 6300621 Valve Shuttle CSAB-XXV 39
- 6300623 Valve Logic DKJS-XHV 39
- 6300625 Valve PSI Reducer PRDB-LWV 39
- 6300638 O-Ring 1p-3705 High PSI Seal 2.0 OD 39
- 6300723 O-Ring 1p-3705 High PSI Seal 2.25 OD 39
- 6300903 Mach Orifice 39
- 6301673 Valve Relief 31
- 6302658 Valve Line Body 33
- 6302661 Case Drain Manifold 25, 27
- 6302679 Adapter 02MP-06MFS 41
- 6302680 Bearing 23
- 6302681 Bearing 23
- 6310001 Diagnostic Nipple Dust Cap 29, 31
- 6310011 Adapter 06MB-04MO 27
- 6310050 Adapter Bulkhead 08MB-08MO 33
- 6310183 Adaptor 08MB-08MB 33
- 6340016 Piston Motor 23
- 6360088 Valve Check 29
- 6360158 Valve Block 31
- 6360160 Valve Block 29
- 6380035 Valve Counterbalance 29
- 6380088 Valve Check COJA-XGV 39
- 6380220 Mach Motor Shaft Extension Housing 23
- 6380221 Pinion 23
- 6380223 Geroler Motor 23
- 6380225 Valve Counterbalance 31
- 6390028 Valve Check 31
- 6390029 Valve Relief 29
- Assembly Access Covers 5, 18, 19
- Assembly Cylinder B12.0 R8.0 S22.00 35
- Assembly Cylinder Pins 5, 16, 17
- Assembly Lower Blades 5, 10, 11
- Assembly Open and Close Circuit 5, 34, 35
- Assembly Pivot Group - Left Side 5, 8, 9
- Assembly Pivot Group - Right Side 5, 6, 7
- Assembly Rotation 5, 22, 23
- Assembly Rotation Circuit - Geroler Motor 5, 26, 27
- Assembly Rotation Circuit - Piston Motor 5, 24, 25
- Assembly Rotation - Geroler Motor 27
- Assembly Rotation - Piston Motor 25
- Assembly Slewing Ring Lubrication 5, 40, 41

INDEX

- Assembly Sub-Head and Lugs 5, 20, 21
- Assembly Swivel Manifold 5, 35, 36, 37
- Assembly Upper Blades - Concrete Tips 14, 15
- Assembly Upper Blades - Steel Tips 12, 13
- Assembly Upper Blades - Steel Tips & Concrete Tips 5
- Bolt Drive Specifications 50
- Bolt Torque Specifications 44, 48
- Contact Information 2, 56
- F0108090 Hex Head Capscrew M8 x 1.25 x 90 25
- F0110020 Hex Head Capscrew M10 x 1.5 x 20 21
- F0110030 Hex Head Capscrew M10 x 1.5 x 30 25, 27
- F0110035 Socket Head Capscrew M10 x 1.50 x 35 35
- F0110050 Hex Head Capscrew M10 x 1.5 x 50 35
- F0112030 Hex Head Capscrew M12 x 1.75 x 30 21
- F0112130 Hex Head Capscrew M12 x 1.75 x 130 27
- F0114030 Hex Head Capscrew M14 x 2.0 x 30 21
- F0114055 Hex Head Capscrew M14 x 2.0 x 55 23
- F0116040 Hex Head Capscrew M16 x 2.0 x 40 37
- F0120100 Hex Head Capscrew M20 x 2.5 x 100 23
- F0124050 Hex Head Capscrew M24 x 3 x 50 19
- F0288150 Hex Head Capscrew $\frac{7}{8}$ - 9 x 1.50 11
- F0288300 Hex Head Capscrew $\frac{7}{8}$ - 9 x 3 11
- F0288400 Hex Head Capscrew $\frac{7}{8}$ - 9 x 4 11
- F0288450 Hex Head Capscrew $\frac{7}{8}$ - 9 x 4 $\frac{1}{2}$ 13, 15
- F0412030 Flat Head Capscrew M12 x 1.75 x 30 7, 9
- F0610020 Socket Head Capscrew M10 x 1.5 x 20 23, 41
- F0610040 Socket Head Capscrew M10 x 1.5 x 40 41
- F0612020 Socket Head Capscrew M12 x 1.75 x 30 7, 9
- F0612170 Socket Head Capscrew M12 x 1.75 x 170 35
- F0620070 Socket Head Capscrew M20 x 2.50 x 70 7, 9
- F0620100 Socket Head Capscrew M20 x 2.50 x 100 17, 35
- F0620180 Socket Head Capscrew M20 x 2.50 x 180 17
- F0624060 Hex Head Capscrew M24 x 3.0 x 60 21
- F0788450 Socket Head Capscrew $\frac{7}{8}$ - 9 x 4 $\frac{1}{2}$ 13, 15
- F1020250 Nylock Hex Nut M20 x 2.50 17
- F1300088 Flat Washer $\frac{7}{8}$ 11, 13, 15
- F1401000 Lock Washer M10 35
- F1401200 Lock Washer M12 21
- F1900031 Washer Nordlock 8mm 25
- F1900040 Washer Nordlock 10mm 21, 25, 27
- F1900050 Washer Nordlock 12mm 27
- F1900056 Washer Nordlock 14mm 21, 23
- F1900063 Washer Nordlock 16mm 37
- F1900100 Nordlock Washer M25 19
- F2588088 Set Screw $\frac{7}{8}$ - 9 x $\frac{7}{8}$ 11
- General Arrangement 4, 5
- H0261100 Split Flange Half 1.00 Code 61 35
- H0262100 Split Flange Half 1.00 Code 62 35
- Lugs 5
- Mach Lugs 21
- Mach Main Shaft 9
- Mach Regen Manifold 39
- Mach Spacer Sleeve (Bucket Cyl. Connection) 21
- Mach Spacer Sleeve (Stick Connection) 21
- O-Ring Boss & Flat Face O-Ring Torque Specifications 49
- Parts Order Form 53
- Parts Order Policy and Procedure 52
- Procedures 46, 47
- Rotate Cross-over / C'bal - Geroler Motor 27
- Rotate Cross-over / C'bal - Piston Motor 25
- S0190219 O-Ring 35
- S0190238 O-Ring 7, 9
- Seal Kit 6300622 39
- Seal Kit 6300624 39
- Seal Kit 6300633 29, 31
- Seal Kit 6300634 32, 33
- Seal Kit SK00024 39
- Seal Kit SK00047 39
- Seal Kit SK00058 28, 29, 30, 31
- Seal Kit SK00156 29
- Seal Kit SK00271 31
- Shear Jaw Armor and Wear Plates 42, 43
- Stick 5
- Sub-Assembly Line Mount Manifold 25, 27, 32, 33
- Sub-Assembly Regen Block 5, 38, 39
- Sub-Assembly Rotate Cross-over / C'bal - Geroler Motor 5, 30, 31
- Sub-Assembly Rotate Cross-over / C'bal - Piston Motor 5, 28, 29
- Table of Contents 3
- Thread Treatment Diagram 45
- Torque Arm Kit 37
- Upper 5
- Valve Regen 35
- Warranty 51
- Wldt Pin (Bucket Cyl. Connection) 21
- Wldt Pin (Stick Connection) 21



GENESIS®

The Promise of Performance.

CONTACT INFORMATION

Genesis Attachments

1000 Genesis Drive
Superior, WI 54880 USA

Toll Free: 888-SHEAR-IT
(888-743-2748)

Phone: 715.395.5252

E-mail:
info@genesisattachments.com

Europe/Africa/Middle East Genesis GmbH

Teramostrasse 23
87700 Memmingen, Germany

Phone: +49 83 31 9 25 98 0

Fax: +49 83 31 9 25 98 80

genesis-europe.com

E-mail:
info@genesis-europe.com

Asia Pacific Representative Office

24 Upper Serangoon View #12-28
Singapore 534205

Phone: +65 9673 9730

E-mail:
tchoo@genesisattachments.com

Central America & Colombia

Cra 13A #89-38 / Ofi 613
Bogota, Colombia

Phone: +57 1 610 8160 / 795 8747

E-mail:
contact@themsagroup.com

View and download all manuals: genesisattachments.com/manuals
Patents: genesisattachments.com/products/patents

Rev. B - 10-9-24