

Razer X Multi-Jaw Demolition Tool (GRX 195)

PARTS MANUAL



CONTACT INFORMATION

Genesis Attachments

1000 Genesis Drive
Superior, WI 54880 USA

Toll Free: 888-SHEAR-IT
(888-743-2748)

Phone: 715.395.5252

E-mail:
info@genesisattachments.com

Europe/Africa/Middle East Genesis GmbH

Teramostrasse 23
87700 Memmingen, Germany

Phone: +49 83 31 9 25 98 0
Fax: +49 83 31 9 25 98 80
genesis-europe.com

E-mail:
info@genesis-europe.com

Asia Pacific Representative Office

24 Upper Serangoon View #12-28
Singapore 534205

Phone: +65 9673 9730

E-mail:
tchoo@genesisattachments.com

Central America & Colombia

Cra 13A #89-38 / Ofi 613
Bogota, Colombia

Phone: +57 1 610 8160 / 795 8747

E-mail:
contact@themsagroup.com

View and download all manuals: genesisattachments.com/manuals
Patents: genesisattachments.com/products/patents

TABLE OF CONTENTS

CONTACT INFORMATION	2
GENERAL ARRANGEMENT	4
ASSEMBLY PIVOT GROUP	6
ASSEMBLY BLADE KIT CRACKER JAW	8
ASSEMBLY LOWER BLADES SHEAR JAW	10
ASSEMBLY UPPER BLADES SHEAR JAW	12
ASSEMBLY BLADE KIT PULVERIZER JAW	14
ASSEMBLY LUGS	16
ASSEMBLY MAIN CYLINDER	18
ASSEMBLY BODY CYLINDERS	20
REGEN BLOCK SUB-ASSEMBLY - 6301255	22
ASSEMBLY SUB-HEAD	24
SUB-ASSEMBLY LINE MOUNT MANIFOLD	26
SPLIT FLANGE KITS USED IN THIS MANUAL	28
BOLT TORQUE SPECIFICATIONS	29
THREAD TREATMENT DIAGRAM	30
Mobile Shears	30
Demolition Tools	31
PROCEDURES	32
Cleaning	32
Threadlocker	32
Anti-Seize	33
No Thread Treatment	33
O-RING BOSS & FLAT FACE O-RING TORQUE SPECIFICATIONS	35
BOLT DRIVE SPECIFICATIONS	36
WARRANTY	37
PARTS ORDER POLICY AND PROCEDURE	38
Parts Orders Should Include	38
Placing Orders	38
Part Numbers	38
Shipping	38
Invoices	38
Returns	38
Warranty Returns	38
PARTS ORDER FORM	39
INDEX	40
CONTACT INFORMATION	42

GENERAL ARRANGEMENT



GENERAL ARRANGEMENT

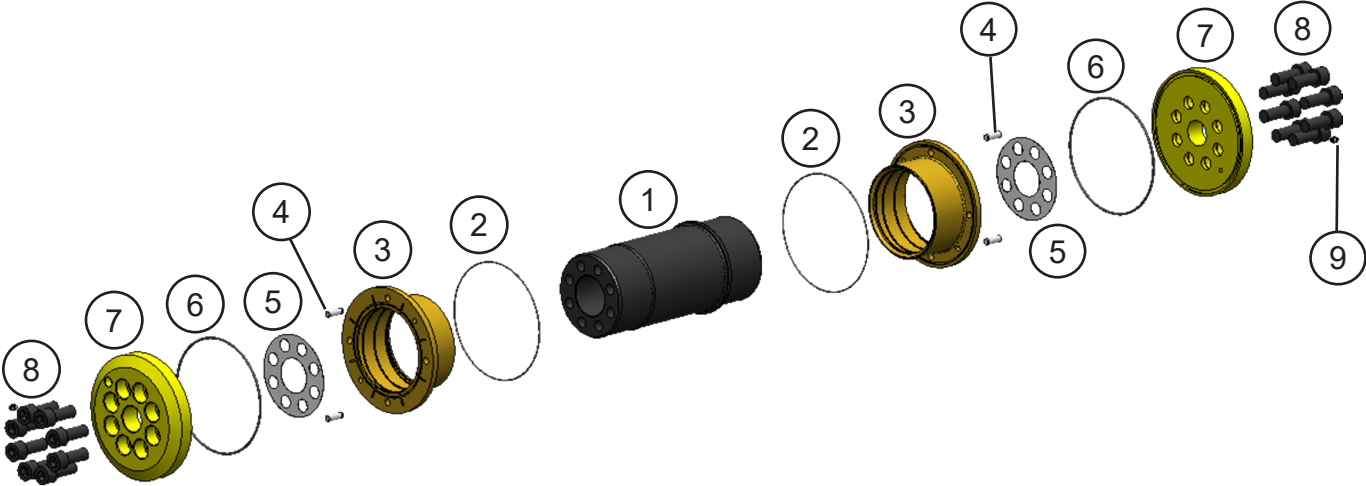
ITEM	QTY	PART NUMBER			DESCRIPTION
		Cracker Jaw	Shear Jaw	Pulverizer Jaw	
1		*			Assembly Lugs
2		See page 24			Assembly Sub-Head
3		3503129			Wtmg Body
4	1	3503158	3503295	3503264	Wtmg Upper Jaw
5	1	3503164	3503300	3503251	Wtmg Lower Jaw
6		See page 6			Assembly Pivot Group
		See page 8	—	—	Assembly Blade Kit Cracker Jaw
		—	See page 10	—	Assembly Lower Blades Shear Jaw
		—	See page 12	—	Assembly Upper Blades Shear Jaw
7		—	—	See page 14	Assembly Blade Kit Pulverizer Jaw

* Part Number is Serial Number specific. For replacement parts call the Genesis Parts Department.

USA
715-395-3488

Europe
+49 83 31 9 25 98 0

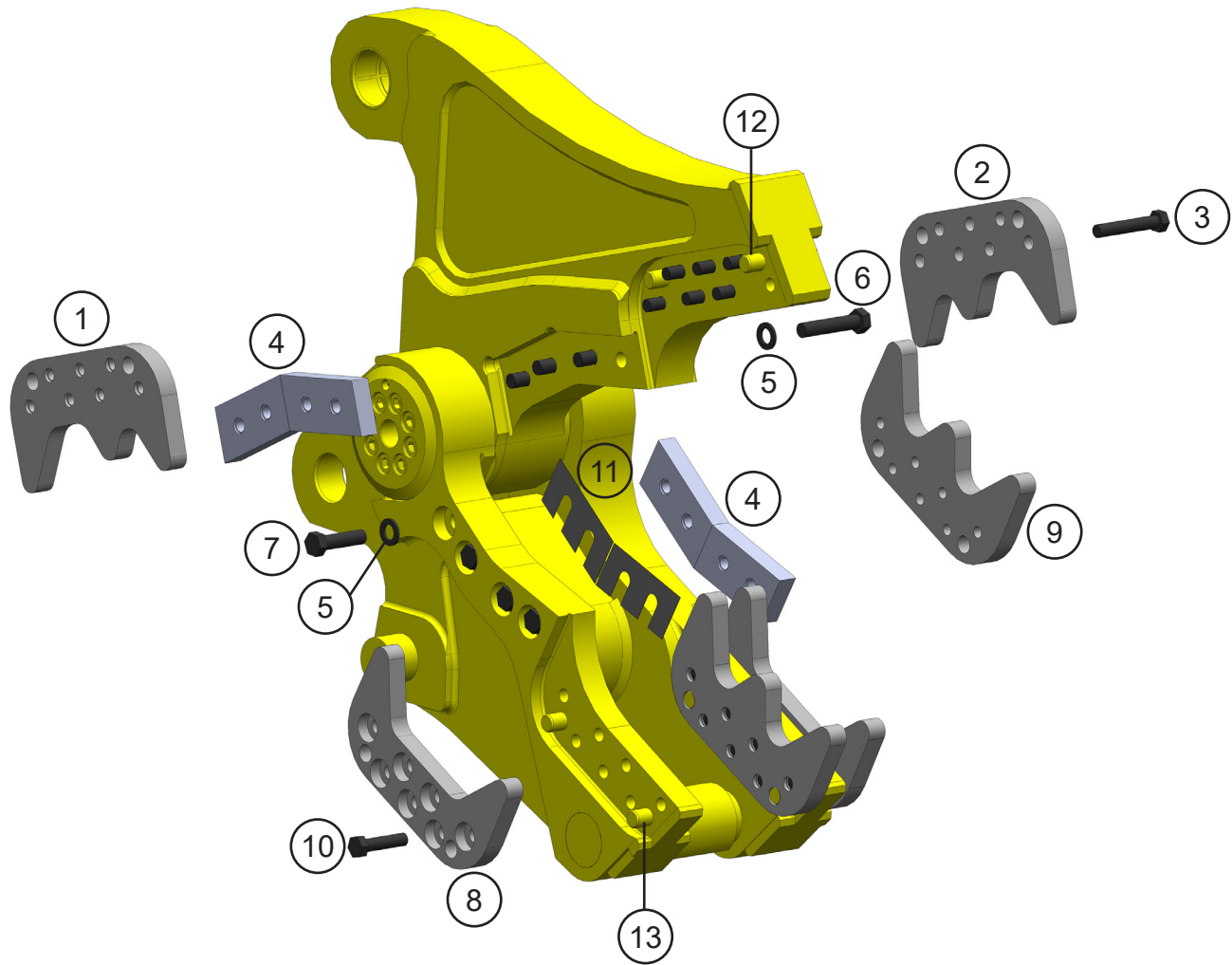
ASSEMBLY PIVOT GROUP



ASSEMBLY PIVOT GROUP

ITEM	QTY	JAW PART NUMBER			DESCRIPTION
		Cracker	Shear	Pulverizer	
1	1	3503221	3503324	3503274	Mach Main Shaft
2	2	S0190267			O-Ring
3	1	3503222 3503273			Mach Bearing
4	4	6300134			Mach Dowel
5	2	1105385			Shim Set
6	2	S0190369			O-Ring
7	2	1105386			Mach End Cap
8	16	F0624060			Socket Head Capscrew, M24 x 3 x 60
9	2	6200002			Grease Fitting

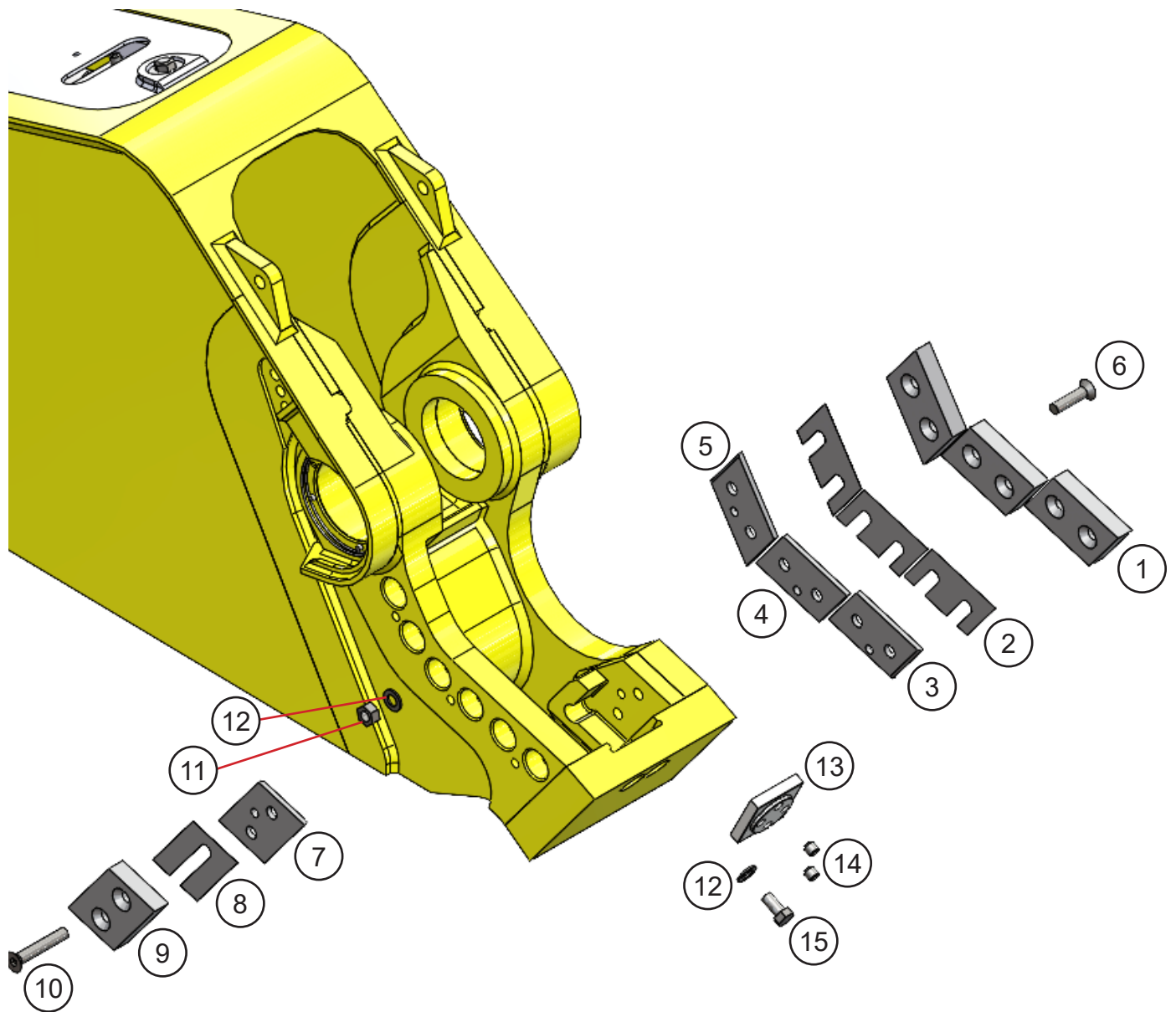
ASSEMBLY BLADE KIT CRACKER JAW



ASSEMBLY BLADE KIT CRACKER JAW

ITEM	QTY	PART NUMBER	DESCRIPTION
1	1	3502156	Mach Tooth Upper RH
2	1	3502158	Mach Tooth Upper LH
3	7	F0124140	Hex Head Capscrew, M24 x 3 x 140
4	4	3503238	Mach Blade
5	8	F1202444	Flat Washer, M24
6	4	F0124120	Hex Head Capscrew, M24 x 3 x 120
7	4	F0124090	Hex Head Capscrew, M24 x 3 x 90
8	2	3502154	Mach Tooth Lower Outside
9	2	3502152	Mach Tooth Lower Inside
10	14	F0124100	Hex Head Capscrew, M24 x 3 x 100
11	2	3503239	Shim Set
12	2	3502898	Mach Tooth Pin Upper
13	4	3502122	Mach Tooth Pin Lower

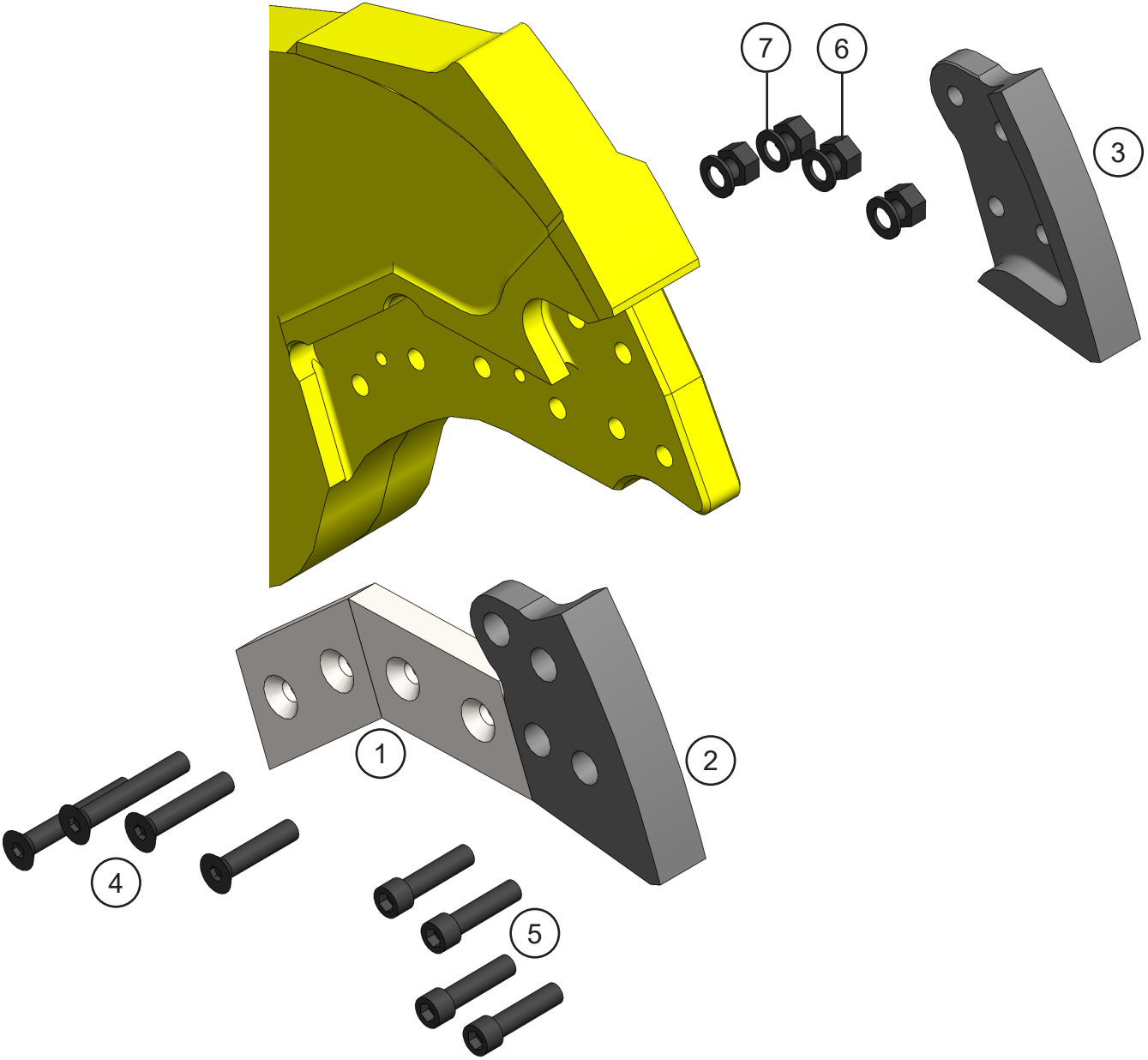
ASSEMBLY LOWER BLADES SHEAR JAW



ASSEMBLY LOWER BLADES SHEAR JAW

ITEM	QTY	PART NUMBER	DESCRIPTION
1	3	1107404	Mach Blade
2	3	1107447	Shim Set - Blade
3	1	1107438	Mach Adjustment Plate
4	1	1107436	Mach Adjustment Plate
5	1	1107434	Mach Adjustment Plate
6	6	F0575300	Flat Head Capscrew $\frac{3}{4}$ - 10 x 3 GR8
7	1	1107440	Mach Adjustment Plate
8	1	1107448	Shim Set - Guide Blade
9	1	1107404	Mach Blade Guide
10	2	F0575450	Flat Head Capscrew $\frac{3}{4}$ - 10 x 4 $\frac{1}{2}$ GR8
11	8	F0907510	Hex Nut $\frac{3}{4}$ - 10 GR8
12	10	F1300075	Flat Washer $\frac{3}{4}$
13	1	4500399	Mach Blade - Razor
14	2	F2575075	Socket Head Set Screw $\frac{3}{4}$ - 10 x $\frac{3}{4}$
15	2	F0275150	Hex Head Capscrew $\frac{3}{4}$ - 10 x 1 $\frac{1}{2}$ GR8

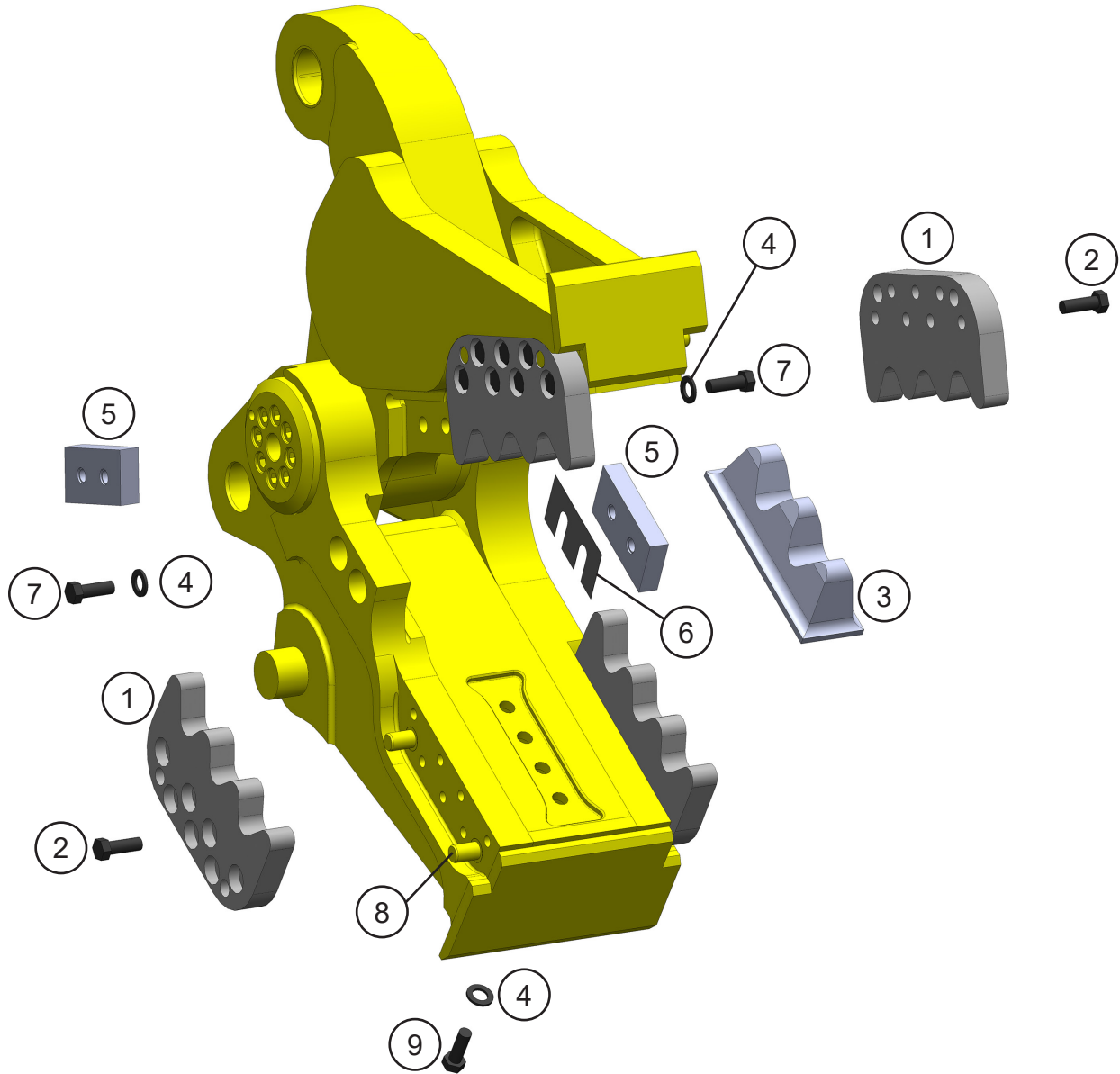
ASSEMBLY UPPER BLADES SHEAR JAW



ASSEMBLY UPPER BLADES SHEAR JAW

ITEM	QTY	PART NUMBER	DESCRIPTION
1	2	1107404	Mach Blade
2	1	1105375	Mach Blade Tip Right
3	1	1105376	Mach Blade Tip Left
4	4	F0575350	Flat Head Capscrew $\frac{3}{4}$ - 10 x $3\frac{1}{2}$
5	4	F0775300	Socket Head Capscrew $\frac{3}{4}$ - 10 x 3
6	4	F0907510	Hex Head Nut $\frac{3}{4}$ - 10
7	4	F1300075	Flat Washer Narrow $\frac{3}{4}$

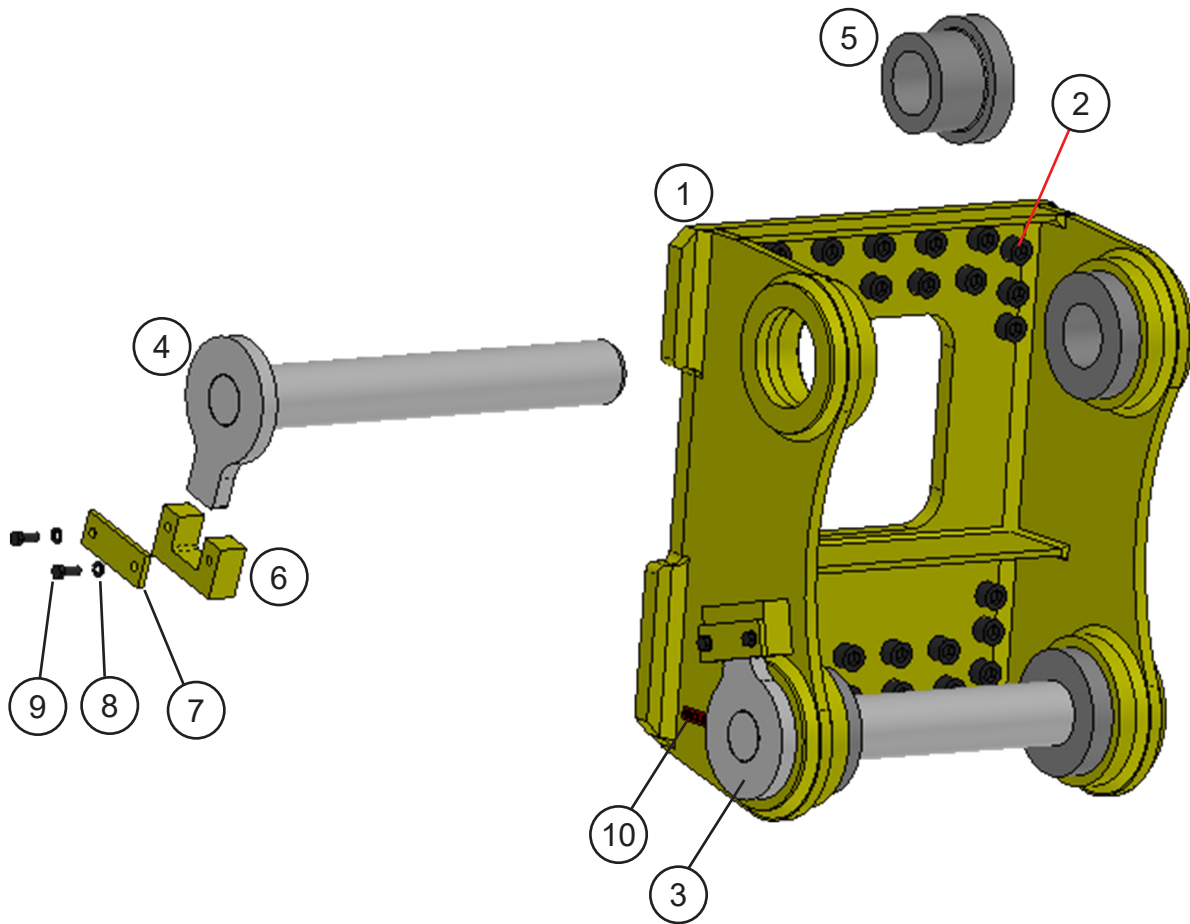
ASSEMBLY BLADE KIT PULVERIZER JAW



ASSEMBLY BLADE KIT PULVERIZER JAW

ITEM	QTY	PART NUMBER	DESCRIPTION
1	4	3503277	Mach Tooth Outside
2	28	F0124050	Hex Head Capscrew, M24 x 3 x 50
3	1	3503475	Mach Tooth Inside
4	8	F1202444	Flat Washer, M24
5	2	3503238	Mach Blade
6	1	3503239	Shim Set
7	4	F0124080	Hex Head Capscrew, M24 x 3 x 80
8	8	3503279	Mach Teeth Pin
9	4	F0127060	Hex Head Capscrew, M27 x 3 x 60

ASSEMBLY LUGS



ASSEMBLY LUGS

ITEM	QTY	PART NUMBER	DESCRIPTION
1	1	**	Wtmg Lugs
2	*	**	Bracket Fasteners
3	1	**	Wldt Stick Pin
4	1	**	Wldt Link Pin
5	*	**	Mach Spacer Sleeve
6	2	**	Mach Pin Keeper
7	2	**	Bar Strap
8	4	**	Washer
9	4	**	Hex Head Capscrew
10	1	**	Stick Pin Decal

* Quantity is dependent upon the bracket.

** Part Number is Serial Number specific. For replacement parts call the Genesis Parts Department.

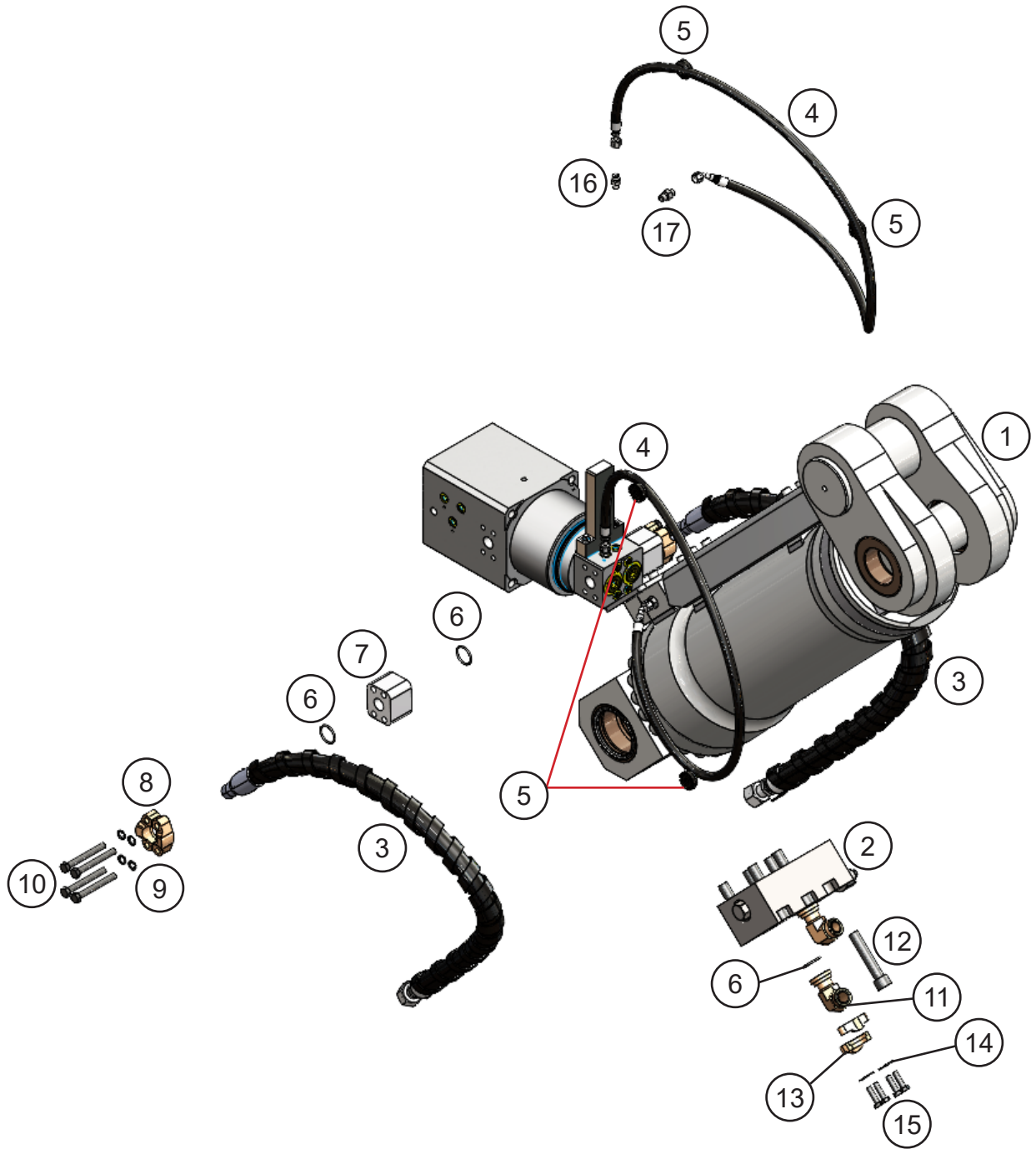
USA

715-395-3488

Europe

+49 83 31 9 25 98 0

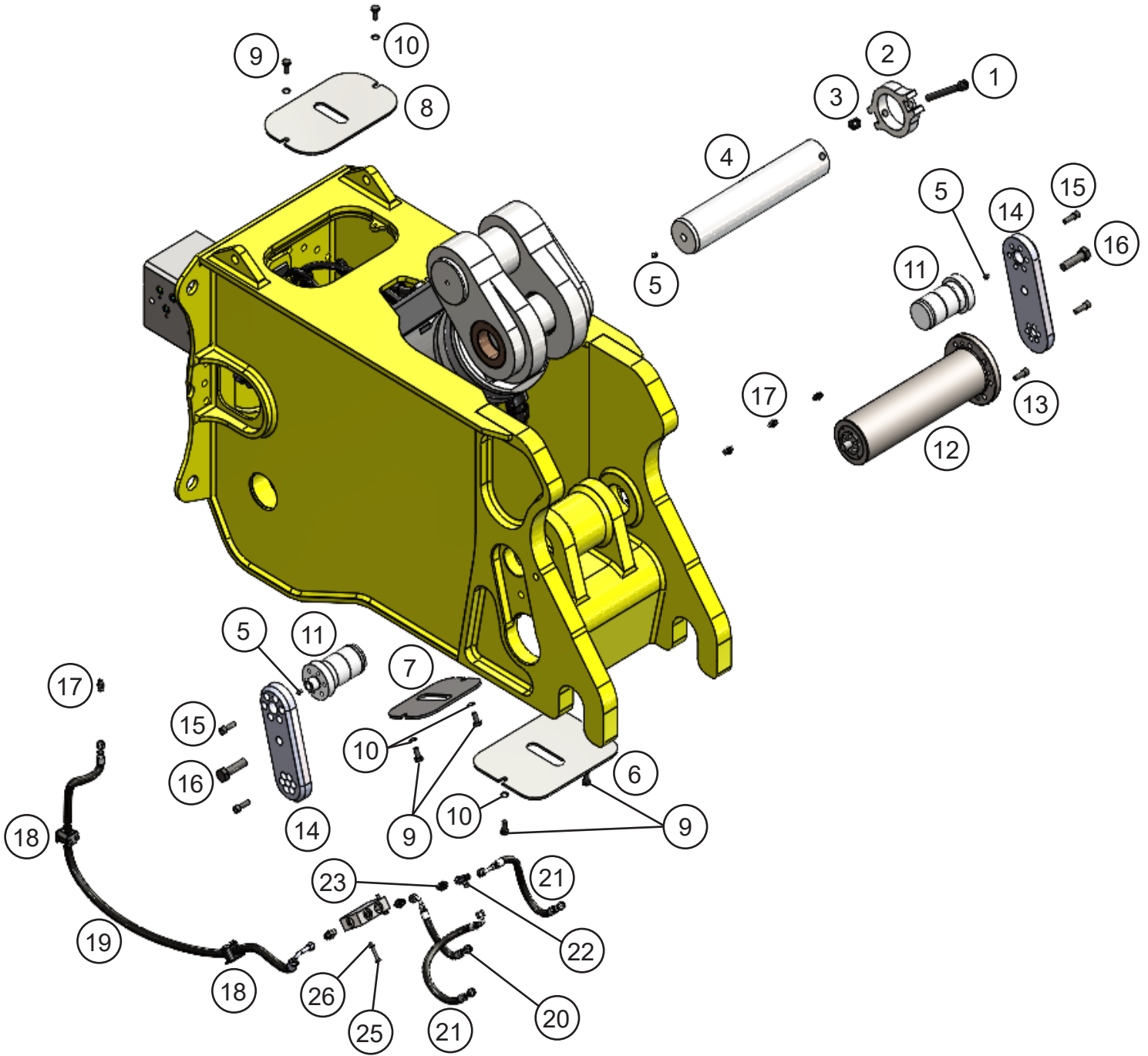
ASSEMBLY MAIN CYLINDER



ASSEMBLY MAIN CYLINDER

ITEM	QTY	PART NUMBER	DESCRIPTION
1	1	6350158	Hydraulic Cylinder
2	1	6301255	Valve - GenFlow
3	2	3503139	Hose
4	2	3503138	Hose
5	4	6380152	Magnet
6	6	S0190219	O-Ring
7	2	6310199	Mach Port Spacer
8	4	H0262100	Split Flange Half 1.00 Code 62
9	8	F1900050	Nord Lock Washer
10	8	F0112100	Hex Head Capscrew, M12 x 1.75 x 100
11	2	6310004	Flange Adapter
12	6	F0620100	Socket Head Capscrew, M20 x 2.5 x 100
13	4	H0261100	Split Flange Half 1.00 Code 61
14	8	F1900040	Nord Lock Washer
15	8	F0110035	Hex Head Capscrew M10 x 1.50 x 35
16	2	6300770	Adapter
17	2	6310011	Adapter

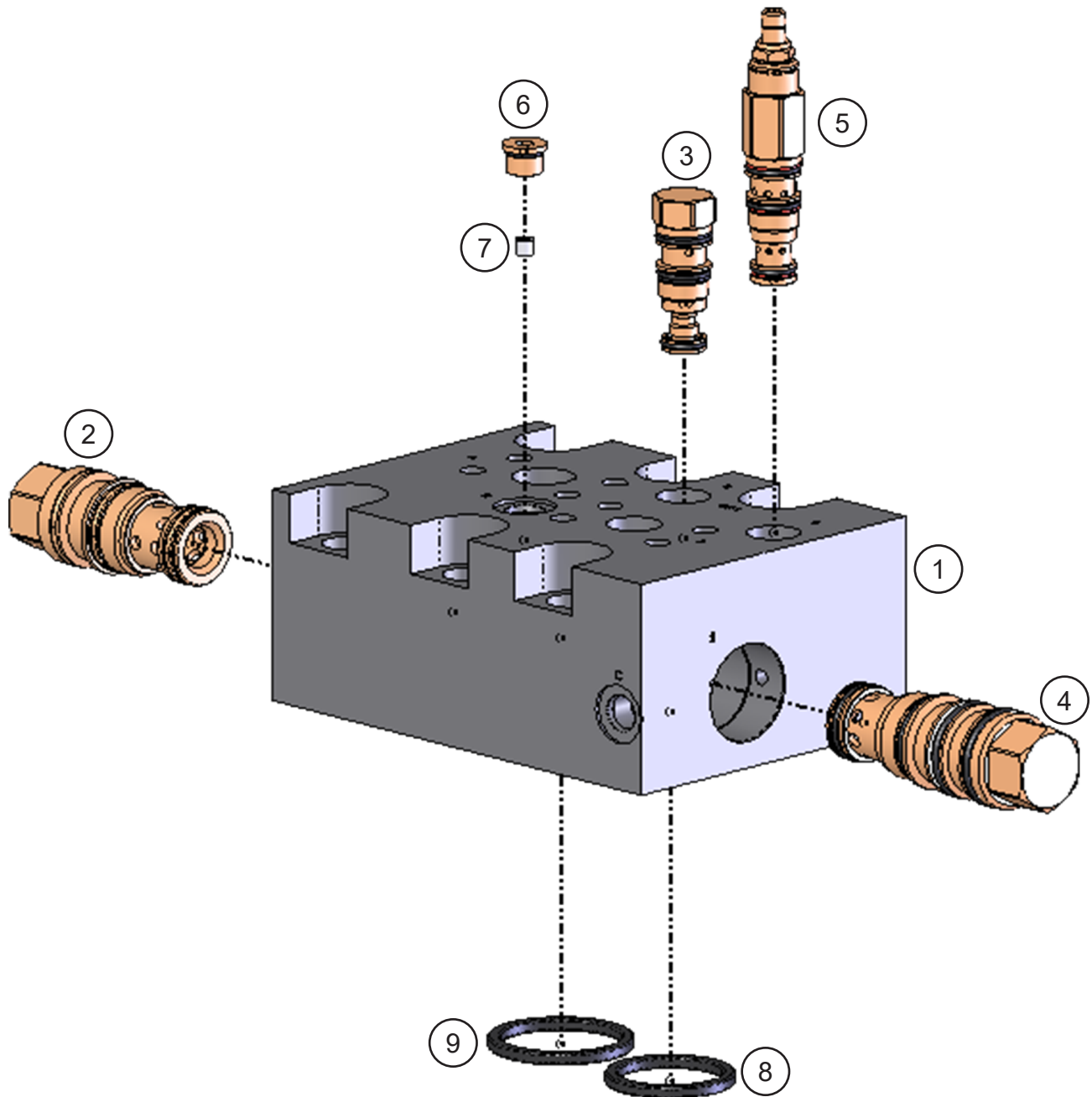
ASSEMBLY BODY CYLINDERS



ASSEMBLY BODY CYLINDERS

ITEM	QTY	PART NUMBER	DESCRIPTION
1	1	F0616150	Socket Head Capscrew, M16 x 2 x 150
2	1	3500831	Mach Pin Keeper
3	1	F1016200	Nylock Nut, M16
4	1	3503243	Mach Pin
5	3	6200002	Grease Fitting
6	1	3502931	Cover
7	1	3503140	Cover
8	1	3502457	Cover
9	6	F0112025	Hex Head Capscrew, M12 x 1.75 x 25
10	6	F1900050	Nord Lock Washer
11	2	3503134	Mach Body Pin
12	1	6350152	Hydraulic Cylinder
13	8	F0612030	Socket Head Capscrew, M12 x 1.75 x 30
14	2	3502928	Mach Body Pin Link
15	24	F0612035	Socket Head Capscrew, M12 x 1.75 x 35
16	2	F0120070	Hex Head Capscrew, M20 x 2.5 x 70
17	4	6300770	Adapter
18	4	6300737	Clamp
19	2	3503137	Hose
20	1	3503136	Hose
21	2	3503135	Hose
22	1	6300883	Adapter Tee
23	4	6310011	Adapter
24	1	6360122	Assy Valve
25	2	F0108045	Hex Head Capscrew, M8 x 1.25 x 45
26	2	F1900031	Nord Lock Washer

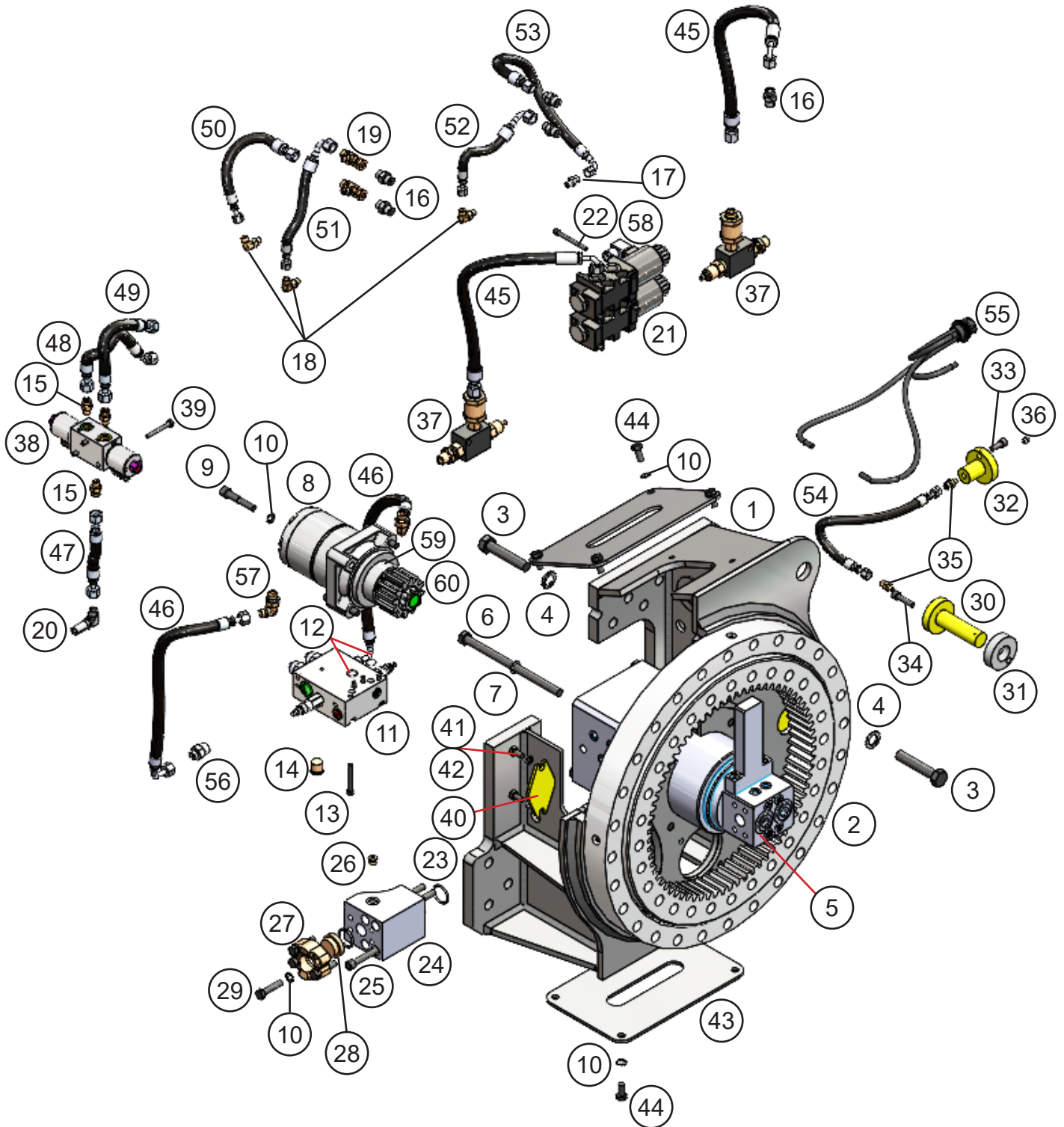
REGEN BLOCK SUB-ASSEMBLY - 6301255



REGEN BLOCK SUB-ASSEMBLY - 6301255

ITEM	QTY	PART NUMBER	DESCRIPTION
1	1	6380037	Mach Regen Manifold Seal Kit SK00043
2	1	6380039	Valve Check COHA-XCV Seal Kit SK00026
3	1	6300621	Valve Shuttle CSAB-XXV Seal Kit 6300622
4	1	6380038	Valve Logic DKHS-XHV Seal Kit SK00026
5	1	6300625	Valve PSI Reducer PRDB-LWV Seal Kit 6300622
6	1	6300153	Plug Socket Head 06MB
7	1	3500023	Mach Orifice
8	1	6300638	O-Ring 1p-3705 High PSI Seal 2.0 OD
9	1	6300723	O-Ring 1p-3705 High PSI Seal 2.25 OD

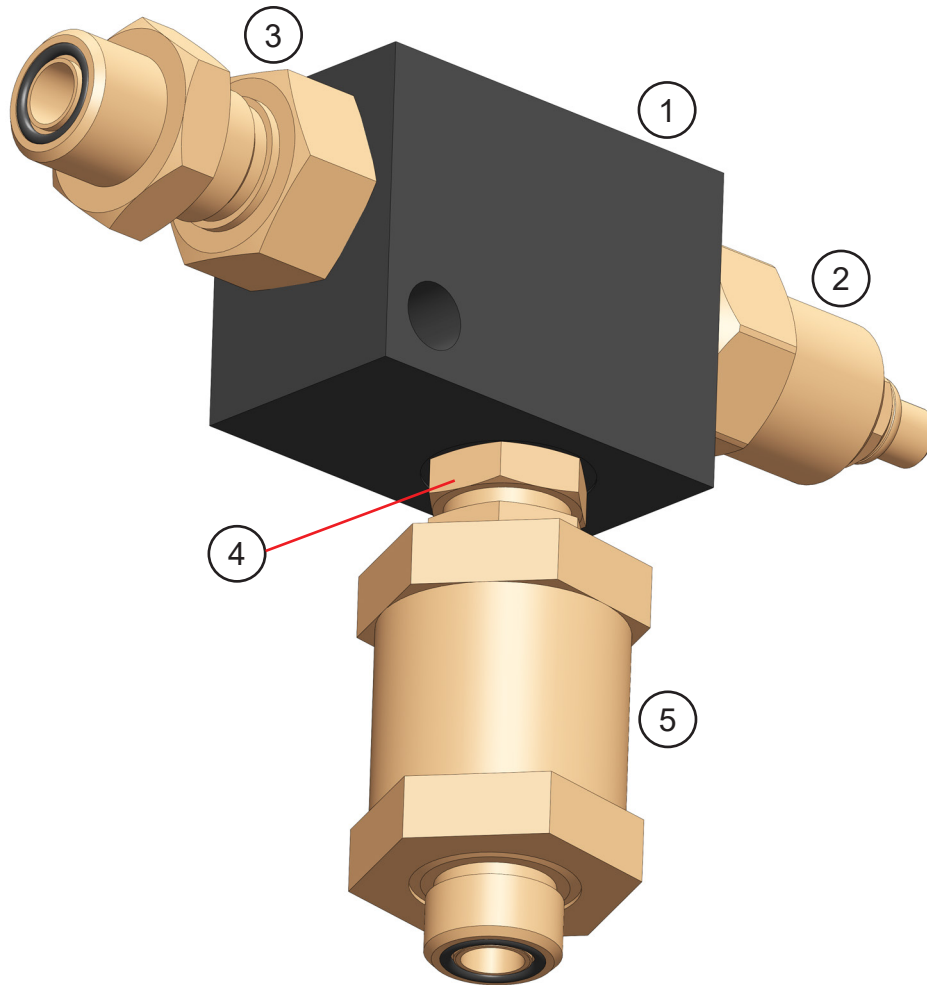
ASSEMBLY SUB-HEAD



ASSEMBLY SUB-HEAD

ITEM	QTY	PART NUMBER	DESCRIPTION	ITEM	QTY	PART NUMBER	DESCRIPTION
1	1	3503083	Wtmg Sub-head	31	1	3502826	Mach Spacer
2	1	6100397	Slewing Ring	32	1	5512411	Mach Grease Bulkhead Adapter
3	56	F0120100	Hex Head Capscrew, M20 x 2.5 x 100	33	1	F0610025	Socket Head Capscrew, M10 x 1.50 x 25
4	56	F1202037	Flat Washer M20	34	1	F0610040	Socket Head Capscrew, M10 x 1.50 x 40
5	1	6350154	Assy Swivel Manifold	35	2	6300731	Adapter
6	4	F0116250	Hex Head Capscrew, M16 x 2.0 x 250	36	1	6200002	Grease Fitting
7	4	F1900063	Nord Lock Washer	37	2	6301202	Flow Control Sub-Assy
8	1	6380083	Motor Assembly	38	1	6360121	Drain Valve
9	4	1108183	Mach Bolt	39	3	F0108060	Hex Head Capscrew, M8 x 1.25 x 60
10	20	F1900050	Nord Lock Washer	40	2	1100319	Cover
11	1	6360102	Rotate Manifold	41	4	F0110020	Hex Head Capscrew, M10 x 1.50 x 20
12	2	S0190015	O-Ring	42	4	F1900040	Nord Lock Washer
13	4	F0731250	Socket Head Capscrew, 5/16-18 UNC X 2.50	43	2	3503142	Cover
14	2	6300077	Plug	44	8	F0112025	Hex Head Capscrew, M12 x 1.75 x 25
15	3	6300018	Adapter	45	2	3503098	Hose
16	4	6310049	Adapter	46	2	3503099	Hose
17	1	6300770	Adapter	47	1	3503104	Hose
18	3	6300768	Adapter	48	1	3503105	Hose
19	2	6300407	Adapter Tee	49	1	3503106	Hose
20	1	6310264	Adapter Bulkhead	50	1	3503102	Hose
21	1	6830065	Selector Valve	51	1	3503101	Hose
22	4	F0608075	Socket Head Capscrew, M8 x 1.25 x 75	52	1	3503103	Hose
23	4	S0190219	O-Ring	53	1	3503100	Hose
24	2	3503156	Mach Port Block	54	1	3503097	Hose
25	8	F0612130	Socket Head Capscrew, M12 x 1.75 x 130	55	1	6830064	Assy Wiring Harness
26	4	6300153	Plug Socket Head 06MB	56	2	6310093	Adapter
27	4	H0262100	Split Flange Half 1.00 Code 62	57	2	6310279	Adapter
28	2	H0362100	Split Flange Plug	58	4	F1200817	Flat Washer M8
29	8	F0112050	Hex Head Capscrew, M12 x 1.75 x 50	59	1	3501835	Mach Spacer
30	1	5512419	Mach Slewing Ring Grease Adapter	60	1	3502192	Pinion Motor

SUB-ASSEMBLY LINE MOUNT MANIFOLD



SUB-ASSEMBLY LINE MOUNT MANIFOLD

ITEM	QTY	PART NUMBER	DESCRIPTION
1	1	6300609	Valve Line Body
2	1	6300361	Valve Flow Control
3	1	6300497	Adaptor Bulkhead 08MB-08MO
4	1	6310183	Adaptor 08MB-08MB
5	1	6300364	Filter

SPLIT FLANGE KITS USED IN THIS MANUAL

1" Split Flange Kit - Code 61 - M10

QTY	PART NUMBER	DESCRIPTION
2	H0261100	Split Flange Half 1.00 Code 61
4	F0110035	Hex Head Capscrew M10 x 1.50 x 35
4	F1401000	Lock Washer M10
1	S0190219	O-Ring

1" Split Flange Kit - Code 62 - M10

QTY	PART NUMBER	DESCRIPTION
2	H0262100	Split Flange Half 1.00 Code 62
4	F0110040	Hex Head Capscrew M10 x 1.50 x 40
4	F1401000	Lock Washer M10
1	S0190219	O-Ring

1" Split Flange Kit - Code 62 - M12

QTY	PART NUMBER	DESCRIPTION
2	H0262100	Split Flange Half 1.00 Code 62
4	F0112040	Hex Head Capscrew M12 x 1.75 x 40
4	F1401200	Lock Washer M12
1	S0190219	O-Ring

1-1/4" Split Flange Kit - Code 62 - M12

QTY	PART NUMBER	DESCRIPTION
2	H0262125	Split Flange Half 1.25 Code 62
4	F0112050	Hex Head Capscrew M12 x 1.75 x 50
4	F1401200	Lock Washer M12
1	S0190222	O-Ring

1-1/4" Split Flange Kit - Code 62 - M14

QTY	PART NUMBER	DESCRIPTION
2	H0262125	Split Flange Half 1.25 Code 62
4	F0114050	Hex Head Capscrew M14 x 2.00 x 50
4	F1401400	Lock Washer M14
1	S0190222	O-Ring

BOLT TORQUE SPECIFICATIONS

Reference the product Thread Treatment Diagrams beginning on page 30 to determine whether to use wet or dry torque values for specific bolts.

Reference Procedures on page 32 for threadlocker or anti-seize application and bolt and bolt hole cleaning.

Prior to torquing, clean all bolt holes, bolts and nuts to remove dirt, grease and oil, and identify bolt type.

Never re-torque bolts that use Loctite. If a bolt becomes loose or damaged after the initial use when Loctite was applied and the bolt was torqued, the bolt must be replaced.

Never break tightened bolts loose with a torque wrench. Doing so may break the torque wrench or take it out of calibration.

Torque wrenches should be calibrated on an annual basis.

When using a torque multiplier with a torque wrench, incorrect settings will be multiplied by the ratio of the torque wrench.

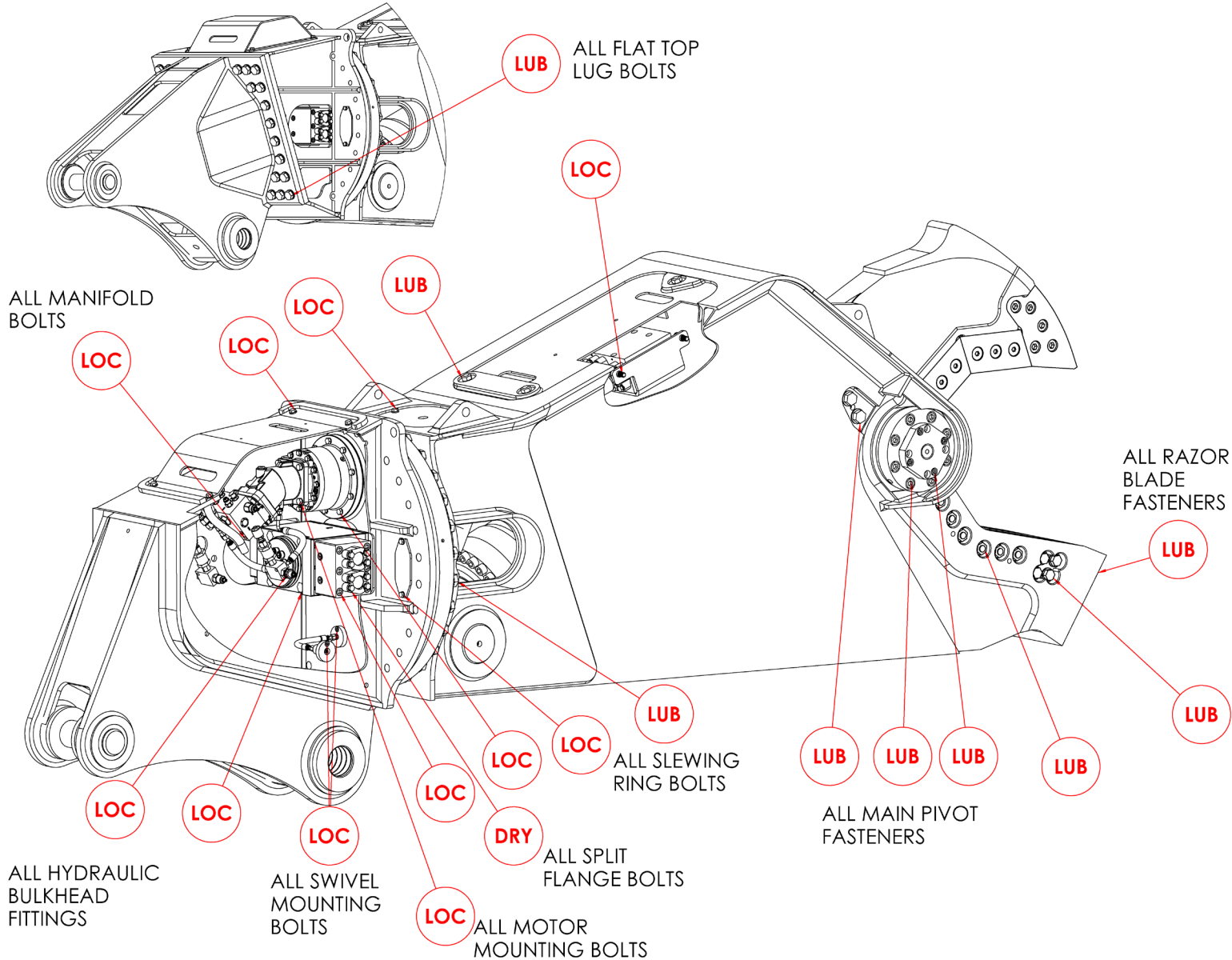
Never use an impact driver on a torque multiplier.

THREAD TREATMENT DIAGRAM

Mobile Shears

Use this diagram to determine what thread treatment, if any, is required for each fastener.

For thread treatment application procedures, see page 32. For prescribed torque values, see page 34.

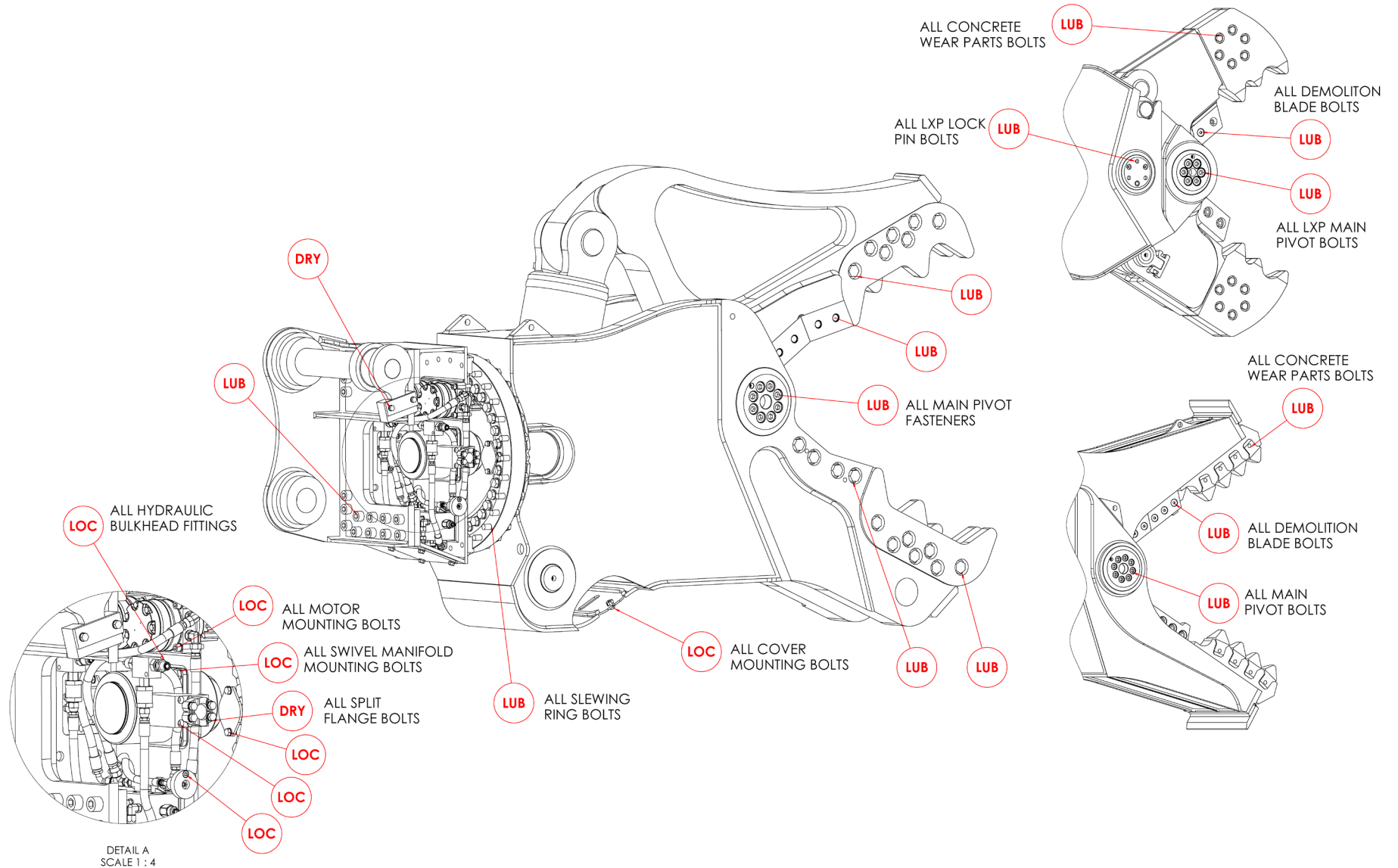


THREAD TREATMENT DIAGRAM

Demolition Tools

Use this diagram to determine what thread treatment, if any, is required for each fastener.

For thread treatment application procedures, see page 32. For prescribed torque values, see page 34.



PROCEDURES

Reference the product Thread Treatment Diagrams beginning on page 30 to determine which of the following procedures is required.

Cleaning

To ensure proper performance of thread treatment and accurate torque values, clean and degrease **all internal and external threads** prior to application of threadlocker, anti-seize or primer and before installation of hardware.

- Ensure both internal and external threads are free of dirt or debris.
- Use brake cleaner or similar cleaning solvent on all threads to remove any grease or oil.
- Allow threads to dry.

NOTICE

Failure to properly clean threads will cause threadlocker, primer, and/or anti-seize to not properly cure!

LOC

Threadlocker

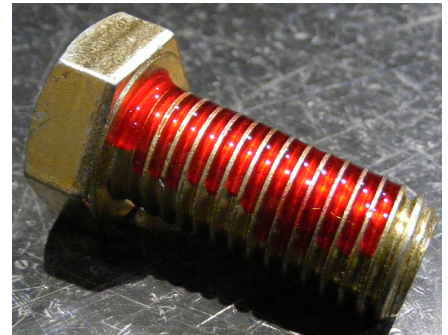
For bolted connections requiring threadlocker, use **Loctite 263** or equivalent applied using the following procedure:

- Clean and degrease all threads.
- For thru holes or nuts, apply threadlocker to bolt threads.
- For blind holes, apply stripe of threadlocker along the length of the hole (applying to the bolt can cause escaping air to remove threadlocker as the bolt is inserted).
- Torque bolt to specified **Wet Torque Value**, see page 34.

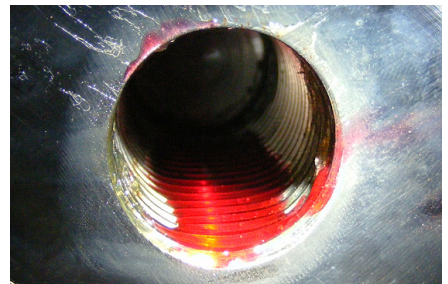
For threaded hydraulic fitting connections, use **Loctite 5452** or equivalent thread sealant in conjunction with **Loctite 7471** primer using the following procedure:

- Clean and degrease all threads.
- Apply Loctite 7471 primer to both external and internal threads and allow to dry.
- Apply threadlocker to 360 degrees of the threads on the male fitting, ensuring adequate coverage.
- Assemble fitting per directions in operator's manual.
- For O-ring boss and flat face O-ring connections, torque fittings to values specified on page 35.

Threadlocker



Blind Hole



Hydraulic Fitting



PROCEDURES

LUB

Anti-Seize

For bolted connections requiring anti-seize lubrication, use **Loctite LB8008** or equivalent using the following procedure:

- Clean and degrease all threads.
- Apply thin coat of anti-seize to internal and external threads and under bolt head and/or nut, ensuring complete coverage.
- Torque bolt to specified **Wet Torque Value**, see page 34.

Anti-Seize

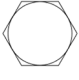
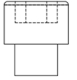
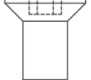


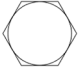
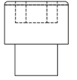
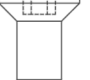
DRY

No Thread Treatment

- Clean and degrease all threads.
- Torque bolt to specified **Dry Torque Value**, see page 34.

BOLT TORQUE SPECIFICATIONS

Dry Torque Values					
		Hex/Socket Head		Flat Head	
					
Fastener Grade	Size x Pitch	Nm	Ft-lb	Nm	Ft-lb
CL 10.9	M8 x 1.25	35	26	27	20
	M10 x 1.50	71	53	58	42
	M12 x 1.75	124	92	101	73
	M14 x 1.50	200	148	163	118
	M14 x 2.00	200	148	163	118
	M16 x 2.00	311	230	254	184
	M20 x 1.50	610	450	498	360
	M20 x 2.50	608	449	497	359
	M24 x 3.00	1054	778	861	622
	M27 x 3.00	1543	1138	1260	910
	M30 x 3.50	2095	1545	1712	1236
	M36 x 4.00	3659	2699	2991	2159
8	1/4-20	14	11	11	8
	5/16-18	32	24	26	19
	3/8-16	59	44	48	35
	7/16-14	94	70	77	56
	1/2-13	143	106	116	84
	1/2-20	162	120	133	96
	5/8-11	287	212	234	169
	3/4-10	509	376	415	300
	7/8-9	821	606	670	484
	1.00-8	1232	909	1007	727
	1.00-14	1383	1020	1130	816
	1.25-7	2463	1817	2013	1453
8/L9	1.50-6	4287	3162	3504	2529

Wet Torque Values					
		Hex/Socket Head		Flat Head	
					
Fastener Grade	Size x Pitch	Nm	Ft-lb	Nm	Ft-lb
CL 10.9	M8 x 1.25	29	22	23	17
	M10 x 1.50	61	45	49	36
	M12 x 1.75	105	78	85	62
	M14 x 1.50	150	111	121	88
	M14 x 2.00	170	126	138	100
	M16 x 2.00	265	196	216	156
	M20 x 1.50	456	337	372	269
	M20 x 2.50	517	382	422	305
	M24 x 3.00	894	660	731	528
	M27 x 3.00	1312	968	1072	774
	M30 x 3.50	1779	1312	1453	1049
	M36 x 4.00	3110	2294	2542	1835
8	1/4-20	13	10	11	8
	5/16-18	27	20	22	16
	3/8-16	50	37	40	29
	7/16-14	80	59	65	47
	1/2-13	122	90	99	72
	1/2-20	138	102	112	81
	5/8-11	244	180	199	144
	3/4-10	433	320	354	256
	7/8-9	698	515	570	412
	1.00-8	1046	772	854	617
	1.00-14	1175	867	960	693
	1.25-7	2095	1545	1712	1236
8/L9	1.50-6	3644	2688	2979	2150

O-RING BOSS & FLAT FACE O-RING TORQUE SPECIFICATIONS

O-Ring Boss Torque Values		
Size Dash	Nm	Ft-lb
-4	22	16
-5	27	20
-6	36	26
-8	83	60
-10	110	80
-12	187	135
-14	249	180
-16	304	220
-20	387	280
-24	498	360

Flat Face O-Ring Torque Values		
Size Dash	Nm	Ft-lb
-4	18	13
-6	30	22
-8	60	44
-10	85	62
-12	121	88
-14	121	88
-16	160	116
-20	213	154
-24	274	198

BOLT DRIVE SPECIFICATIONS

Thread Size x Pitch	Hex Head	Socket Head	Flat Head
			
Wrench/Drive Size			
M8 x 1.25	13mm	6mm	5mm
M10 x 1.50	17mm	8mm	6mm
M12 x 1.75	19mm	10mm	8mm
M14 x 1.50	22mm	12mm	10mm
M14 x 2.00	22mm	12mm	10mm
M16 x 2.00	24mm	14mm	10mm
M20 x 1.50	30mm	17mm	12mm
M20 x 2.50	30mm	17mm	12mm
M24 x 3.00	36mm	19mm	14mm
M27 x 3.00	41mm	19mm	-
M30 x 3.50	46mm	22mm	-
M36 x 4.00	55mm	27mm	-
1/4-20	7/16"	3/16"	5/32"
5/16-18	1/2"	1/4"	3/16"
3/8-16	9/16"	5/16"	7/32"
7/16-14	5/8"	3/8"	1/4"
1/2-13	3/4"	3/8"	5/16"
1/2-20	3/4"	3/8"	5/16"
5/8-11	15/16"	1/2"	3/8"
3/4-10	1-1/8"	5/8"	1/2"
7/8-9	1-5/16"	3/4"	9/16"
1.00-8	1-1/2"	3/4"	5/8"
1.00-14	1-1/2"	3/4"	5/8"
1.25-7	1-7/8"	7/8"	7/8"
1.50-6	2-1/4"	1"	1"

WARRANTY

Claim Procedure

Notify the Genesis Service Department of the potential warranty claim prior to making the repair. Digital pictures are very helpful for diagnosing problems and recommending repairs.

Contact the Genesis Service Department before making alterations, changes or repairs to any component that is going to be considered for warranty. Not doing so will void all Genesis warranty consideration.

The Genesis Service Department will issue an authorization number to track the repair costs, outgoing parts, and/or defective parts returning to the factory.

Replacement parts must be ordered using a purchase order number. Shipping is standard ground. Overnight shipping is available by request, and Genesis will not cover the shipping charge.

When the repair is complete, submit an invoice to the Genesis Service Department within 30 days. Include itemized internal labor reporting, parts lists and invoices for outside contractors. Reference the authorization number on all invoices.

When returning parts for warranty consideration, include a copy of any related Genesis paperwork along with any other necessary documentation to ensure proper processing and credit. The Genesis Service Department will provide the necessary forms.

Your account will be credited when the warranty claim is accepted.

Blade Warranty

Standard warranty on blades will only be considered on the first edge, and wear on the edge must be 1/8" radius or less. Genesis does not warranty cutting blades that are cracked or broken from top to bottom (perpendicular to the long edge of the blade). Genesis also does not cover fasteners, the labor to replace wear components or collateral damage, such as blade seats, from broken blades, the piercing blade tang or adjustment plates.

Please direct any questions to the Genesis Service Department: 715-395-5252

PARTS ORDER POLICY AND PROCEDURE

Parts Orders Should Include

- Purchase order number
- Model and serial number of attachment
- Part number and quantity needed
- Shipping and billing address
- Method of shipment or required delivery date

Placing Orders

Orders may be placed by phone or e-mail. To e-mail an order, use the form on the following page or your purchase order form. Contact information is located at the front of this manual.

Part Numbers

Part numbers are listed in a separate Parts Manual or, if included, the Parts section of this manual. Contact the Genesis Parts Department with questions regarding part numbers, availability and pricing.

Shipping

All orders will be shipped best way surface unless an alternate shipping method is requested. Shipping charges are not included in the purchase price of parts.

Invoices

All invoices are due upon receipt. Any accounts with invoices open beyond 60 days are subject to review and may be placed on C.O.D. status without further notice.

Returns

Many unused Genesis parts may be returned with proper documentation. Return shipping is the responsibility of the purchaser. Credit will be issued upon return, less a 25% restocking fee. Documentation is required for credit of returned parts. Contact the Genesis Service Department at 715-395-5252 for an RGA (Return Goods Authorization) number and form. An RGA must accompany every return. Items shipped without an RGA may be returned to sender.

Warranty Returns

All parts returned to Genesis for warranty consideration must be returned with a completed RGA (Return Goods Authorization) provided by the Genesis Service Department. The form needs to be completed in its entirety, including any additional information requested by the Service Department. Return shipping is the responsibility of the sender and will be credited upon claim approval. A determination to accept or deny the claim will be made based upon the information available to Genesis. Warranty on purchased parts other than wear components is 6 months. Genesis does not cover labor costs to replace purchased parts replaced under warranty. There is no warranty period on wear parts or components.



PARTS ORDER FORM

Customer: _____

Date: _____

Phone: _____

Contact: _____

Shipping Address:

E-mail: _____

Billing Address:

Purchase Order: _____

Shipping Method: _____

Model: _____

Serial Number: _____

Quantity	Part Number	Description	Price

E-mail to the Genesis Parts Department: genesisparts@genesisattachments.com
For assistance, call 715-395-5252

INDEX

1-1/4" Split Flange Kit - Code 62 - M12	28	3503164 Wtmg Lower Jaw	5
1-1/4" Split Flange Kit - Code 62 - M14	28	3503221 Mach Main Shaft	7
1" Split Flange Kit - Code 61 - M10	28	3503222 Mach Bearing	7
1" Split Flange Kit - Code 62 - M10	28	3503238 Mach Blade	9, 15
1" Split Flange Kit - Code 62 - M12	28	3503239 Shim Set	9, 15
1100319 Cover	25	3503243 Mach Pin	21
1105375 Mach Blade Tip Right	13	3503251 Wtmg Lower Jaw	5
1105376 Mach Blade Tip Left	13	3503264 Wtmg Upper Jaw	5
1105385 Shim Set	7	3503273 Mach Bearing	7
1105386 Mach End Cap	7	3503274 Mach Main Shaft	7
1107404 Mach Blade	11, 13	3503277 Mach Tooth Outside	15
1107404 Mach Blade Guide	11	3503279 Mach Teeth Pin	15
1107434 Mach Adjustment Plate	11	3503295 Wtmg Upper Jaw	5
1107436 Mach Adjustment Plate	11	3503300 Wtmg Lower Jaw	5
1107438 Mach Adjustment Plate	11	3503324 Mach Main Shaft	7
1107440 Mach Adjustment Plate	11	3503475 Mach Tooth Inside	15
1107447 Shim Set - Blade	11	4500399 Mach Blade - Razor	11
1107448 Shim Set - Guide Blade	11	5512411 Mach Grease Bulkhead Adapter	25
1108183 Mach Bolt	25	5512419 Mach Slewing Ring Grease Adapter	25
3500023 Mach Orifice	23	6100397 Slewing Ring	25
3500831 Mach Pin Keeper	21	6200002 Grease Fitting	7, 21, 25
3501835 Mach Spacer	25	6300018 Adapter	25
3502122 Mach Tooth Pin Lower	9	6300077 Plug	25
3502152 Mach Tooth Lower Inside	9	6300134 Mach Dowel	7
3502154 Mach Tooth Lower Outside	9	6300153 Plug Socket Head 06MB	23, 25
3502156 Mach Tooth Upper RH	9	6300361 Valve Flow Control	27
3502158 Mach Tooth Upper LH	9	6300364 Filter	27
3502192 Pinion Motor	25	6300407 Adapter Tee	25
3502457 Cover	21	6300497 Adaptor Bulkhead 08MB-08MO	27
3502826 Mach Spacer	25	6300609 Valve Line Body	27
3502898 Mach Tooth Pin Upper	9	6300621 Valve Shuttle CSAB-XXV	23
3502928 Mach Body Pin Link	21	6300625 Valve PSI Reducer PRDB-LWV	23
3502931 Cover	21	6300638 O-Ring 1p-3705 High PSI Seal 2.0 OD	23
3503083 Wtmg Sub-head	25	6300723 O-Ring 1p-3705 High PSI Seal 2.25 OD	23
3503097 Hose	25	6300731 Adapter	25
3503098 Hose	25	6300737 Clamp	21
3503099 Hose	25	6300768 Adapter	25
3503100 Hose	25	6300770 Adapter	19, 21, 25
3503101 Hose	25	6300883 Adapter Tee	21
3503102 Hose	25	6301202 Flow Control Sub-Assy	25
3503103 Hose	25	6301255 Valve - GenFlow	19
3503104 Hose	25	6310004 Flange Adapter	19
3503105 Hose	25	6310011 Adapter	19, 21
3503106 Hose	25	6310049 Adapter	25
3503129 Wtmg Body	5	6310093 Adapter	25
3503134 Mach Body Pin	21	6310183 Adaptor 08MB-08MB	27
3503135 Hose	21	6310199 Mach Port Spacer	19
3503136 Hose	21	6310264 Adapter Bulkhead	25
3503137 Hose	21	6310279 Adapter	25
3503138 Hose	19	6350152 Hydraulic Cylinder	21
3503139 Hose	19	6350154 Assy Swivel Manifold	25
3503140 Cover	21	6350158 Hydraulic Cylinder	19
3503142 Cover	25	6360102 Rotate Manifold	25
3503156 Mach Port Block	25	6360121 Drain Valve	25
3503158 Wtmg Upper Jaw	5	6360122 Assy Valve	21

INDEX

6380037 Mach Regen Manifold	23	F0775300 Socket Head Capscrew ¾ - 10 x 3	13
6380038 Valve Logic DKHS-XHV	23	F0907510 Hex Head Nut ¾ - 10	13
6380039 Valve Check COHA-XCV	23	F0907510 Hex Nut ¾ - 10 GR8	11
6380083 Motor Assembly	25	F1016200 Nylock Nut, M16	21
6380152 Magnet	19	F1200817 Flat Washer M8	25
6830064 Assy Wiring Harness	25	F1202037 Flat Washer M20	25
6830065 Selector Valve	25	F1202444 Flat Washer, M24	9, 15
Assembly Blade Kit Cracker Jaw	5, 8, 9	F1300075 Flat Washer ¾	11
Assembly Blade Kit Pulverizer Jaw	5, 14, 15	F1300075 Flat Washer Narrow ¾	13
Assembly Body Cylinders	20, 21	F1401000 Lock Washer M10	28
Assembly Lower Blades Shear Jaw	5, 10, 11	F1401200 Lock Washer M12	28
Assembly Lugs	5, 16, 17	F1401400 Lock Washer M14	28
Assembly Main Cylinder	18, 19	F1900031 Nord Lock Washer	21
Assembly Pivot Group	5, 6, 7	F1900040 Nord Lock Washer	19, 25
Assembly Sub-Head	5, 24, 25	F1900050 Nord Lock Washer	19, 21, 25
Assembly Upper Blades Shear Jaw	5, 12, 13	F1900063 Nord Lock Washer	25
Bar Strap	17	F2575075 Socket Head Set Screw ¾ -10 X ¾	11
Bolt Drive Specifications	36	General Arrangement	4, 5
Bolt Torque Specifications	29	H0261100 Split Flange Half 1.00 Code 61	19, 28
Bracket Fasteners	17	H0262100 Split Flange Half 1.00 Code 62	19, 25, 28
Contact Information	2, 42	H0262125 Split Flange Half 1.25 Code 62	28
F0108045 Hex Head Capscrew, M8 x 1.25 x 45	21	H0362100 Split Flange Plug	25
F0108060 Hex Head Capscrew, M8 x 1.25 x 60	25	Hex Head Capscrew	17
F0110020 Hex Head Capscrew, M10 x 1.50 x 20	25	Mach Pin Keeper	17
F0110035 Hex Head Capscrew M10 x 1.50 x 35	19, 28	Mach Spacer Sleeve	17
F0110040 Hex Head Capscrew M10 x 1.50 x 40	28	O-Ring Boss & Flat Face O-Ring Torque Specifications	35
F0112025 Hex Head Capscrew, M12 x 1.75 x 25	21, 25	Parts Order Form	39
F0112040 Hex Head Capscrew M12 x 1.75 x 40	28	Parts Order Policy and Procedure	38
F0112050 Hex Head Capscrew M12 x 1.75 x 50	25, 28	Procedures	32
F0112100 Hex Head Capscrew, M12 x 1.75 x 100	19	Regen Block Sub-Assembly - 6301255	22, 23
F0114050 Hex Head Capscrew M14 x 2.00 x 50	28	S0190015 O-Ring	25
F0116250 Hex Head Capscrew, M16 x 2.0 x 250	25	S0190219 O-Ring	19, 25, 28
F0120070 Hex Head Capscrew, M20 x 2.5 x 70	21	S0190222 O-Ring	28
F0120100 Hex Head Capscrew, M20 x 2.5 x 100	25	S0190267 O-Ring	7
F0124050 Hex Head Capscrew, M24 x 3 x 50	15	S0190369 O-Ring	7
F0124080 Hex Head Capscrew, M24 x 3 x 80	15	Seal Kit 6300622	23
F0124090 Hex Head Capscrew, M24 x 3 x 90	9	Seal Kit 6300634	27
F0124100 Hex Head Capscrew, M24 x 3 x 100	9	Seal Kit SK00026	23
F0124120 Hex Head Capscrew, M24 x 3 x 120	9	Seal Kit SK00043	23
F0124140 Hex Head Capscrew, M24 x 3 x 140	9	Split Flange Kits Used in This Manual	28
F0127060 Hex Head Capscrew, M27 x 3 x 60	15	Stick Pin Decal	17
F0275150 Hex Head Capscrew ¾ - 10 x 1½ GR8	11	Sub-Assembly Line Mount Manifold	26, 27
F0575300 Flat Head Capscrew ¾ - 10 x 3 GR8	11	Table of Contents	3
F0575350 Flat Head Capscrew ¾ - 10 x 3½	13	Thread Treatment Diagram	30
F0575450 Flat Head Capscrew ¾ - 10 x 4½ GR8	11	Warranty	37
F0608075 Socket Head Capscrew, M8 x 1.2 x 75	25	Washer	17
F0610025 Socket Head Capscrew, M10 x 1.50 x 25	25	Wldt Link Pin	17
F0610040 Socket Head Capscrew, M10 x 1.50 x 40	25	Wldt Stick Pin	17
F0612030 Socket Head Capscrew, M12 x 1.75 x 30	21	Wtmg Lugs	17
F0612035 Socket Head Capscrew, M12 x 1.75 x 35	21		
F0612130 Socket Head Capscrew, M12 x 1.75 x 130	25		
F0616150 Socket Head Capscrew, M16 x 2 x 150	21		
F0620100 Socket Head Capscrew, M20 x 2.5 x 100	19		
F0624060 Socket Head Capscrew, M24 x 3 x 60	7		
F0731250 Socket Head Capscrew, 5/16-18 UNC X 2.50	25		



GENESIS®

The Promise of Performance.

CONTACT INFORMATION

Genesis Attachments

1000 Genesis Drive
Superior, WI 54880 USA

Toll Free: 888-SHEAR-IT
(888-743-2748)

Phone: 715.395.5252

E-mail:
info@genesisattachments.com

Europe/Africa/Middle East Genesis GmbH

Teramostrasse 23
87700 Memmingen, Germany

Phone: +49 83 31 9 25 98 0

Fax: +49 83 31 9 25 98 80

genesis-europe.com

E-mail:
info@genesis-europe.com

Asia Pacific Representative Office

24 Upper Serangoon View #12-28
Singapore 534205

Phone: +65 9673 9730

E-mail:
tchoo@genesisattachments.com

Central America & Colombia

Cra 13A #89-38 / Ofi 613
Bogota, Colombia

Phone: +57 1 610 8160 / 795 8747

E-mail:
contact@themsagroup.com

View and download all manuals: genesisattachments.com/manuals

Patents: genesisattachments.com/products/patents