

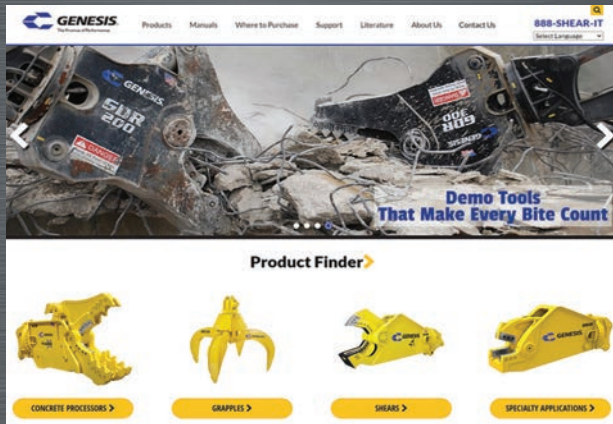


# IT'S TIME

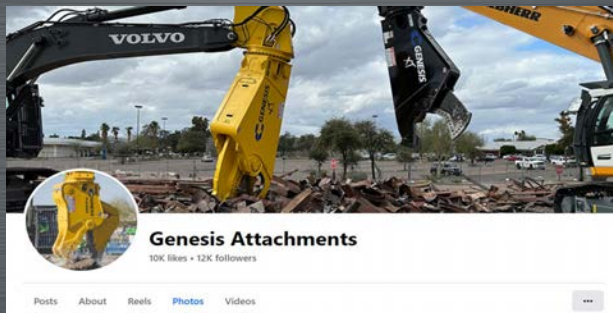
**MORE UPTIME • FASTER CYCLE TIME • LONGER LIFETIME**

**PRODUCT CATALOG**

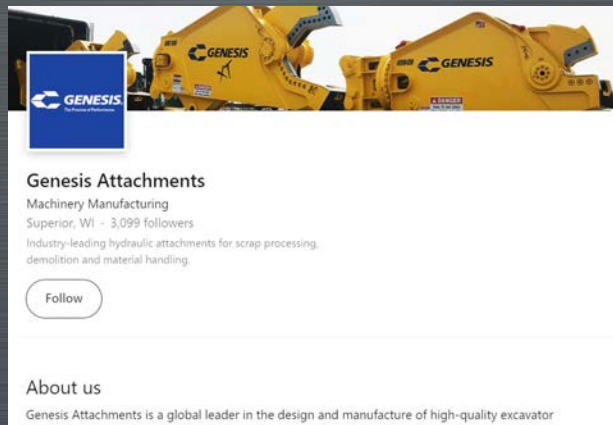
# CONNECT WITH US




 [genesisattachments.com](https://www.genesisattachments.com)




 [facebook.com/genesisattachments](https://www.facebook.com/genesisattachments)

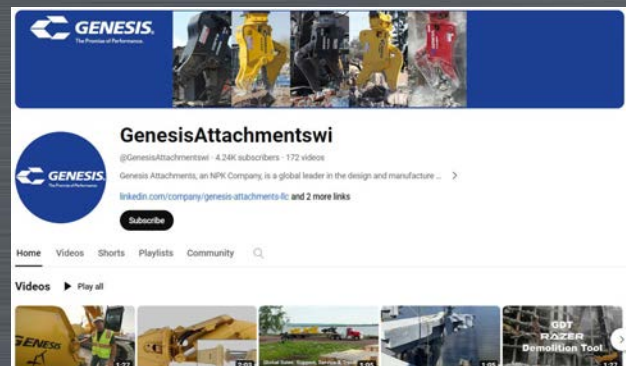



 [linkedin.com/company/genesis-attachments-llc](https://www.linkedin.com/company/genesis-attachments-llc)

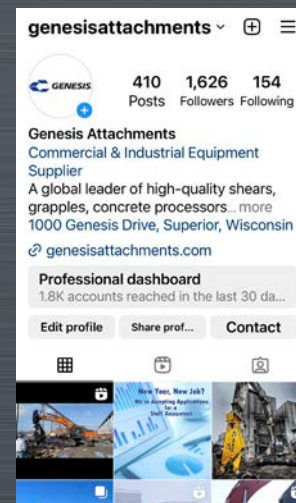
 Genesis Attachments  
1000 Genesis Drive  
Superior, WI 54880 USA

 Toll Free: 888-SHEAR-IT  
(888-743-2748)  
Phone: 715.395.5252

 [info@genesisattachments.com](mailto:info@genesisattachments.com)



 [youtube.com/genesisattachmentswi](https://www.youtube.com/genesisattachmentswi)



 [instagram.com/genesisattachments](https://www.instagram.com/genesisattachments)

# CONTENTS



**GXT MOBILE SHEAR PG 4**



**GRP REBAR PROCESSOR PG 6**



**GRB RAIL BREAKER PG 7**



**GDP DEMOPRO PG 8**



**GSS SUBSEA SHEAR PG 9**



**M7 CONCRETE CRACKER PG 10**



**GVP VERSI PRO 07 PG 11**



**GVP VERSI PRO 15 PG 12**



**GRS REBAR SHEAR PG 13**



**GLS LINKAGE SHEAR PG 13**



**GRX RAZER X PG 14**



**LXP® LOGIX PROCESSOR PG 16**



**GDT RAZER PG 18**



**GDR DEMOLITION RECYCLER PG 19**



**GCP CONCRETE PROCESSOR PG 20**



**GCC CONCRETE CRACKER PG 21**



**GMP D MECH. PULVERIZER D SERIES PG 22**



**GHG HANDLING GRAPPLE PG 23**



**GSG SCRAP GRAPPLE PG 24**



**GSD SEVERE-DUTY GRAPPLE PG 25**

**TECHNICAL SERVICE TRAINING**

**PG 26**

**PARTS**

**PG 27**

**REBUILD SERVICES & SHEAR JAW ARMOR®**

**PG 28**

**MANUFACTURING**

**PG 29**

**MULTI-MACHINE MOUNTING OPTIONS**

**PG 30**

# GXT

## MOBILE SHEAR

Lower shear height improves visibility while providing superior rigidity and structural integrity

Reverse-mounted hydraulic cylinder shortens shear length and weight while protecting rod from damage

Weld-on, replaceable, highly abrasion-resistant steel rhino horn protects front of upper jaw, reducing downtime and welding build-up

Bolt-on piercing tip encapsulates front of upper jaw, minimizing risk of damage while reducing welding build-up and downtime

Remote-mounted hydraulic speed valve improves serviceability and minimizes stress on other critical hydraulic components

Improved jaw geometry makes it easier to pick up material and reduces wear from ground contact

All the power in a shorter, lighter shear with a center of gravity closer to the excavator. Most models mount on smaller size carriers for lower initial investment and hourly operating costs.

Short primary cutting blades position apex closer to the rear of the jaws and draw material further into the jaws where higher force makes efficient cuts

Dual guide blade length matches piercing tip length enabling blades to be shimmed independently to accommodate piercing tip wear





## GXT APPLICATIONS

- ▶ Scrap Processing
- ▶ Demolition

Model	Weight*	Jaw Opening	Jaw Depth	Reach**	Minimum Excavator Weight	
	(lbs.)	(ins.)	(ins.)	(ft. ins.)	Boom Mount*** (lbs.)	Stick Mount*** (lbs.)
<b>GXT 115****</b>	3,100	16	18	5' 0"	15,000	25,000
<b>GXT 115R****</b>	3,550	16	18	7' 8"	18,000	30,000
<b>GXT 225</b>	4,200	18	20	5' 8"	25,000	35,000
<b>GXT 225R</b>	4,900	18	20	7' 11"	30,000	45,000
<b>GXT 335</b>	6,500	23	26	6' 5"	27,000	45,000
<b>GXT 335R</b>	7,300	23	26	8' 11"	37,000	66,000
<b>GXT 445</b>	9,500	28	28	7' 2"	40,000	75,000
<b>GXT 445R</b>	11,000	28	28	10' 1"	48,000	90,000
<b>GXT 555</b>	11,600	30	30	8' 0"	50,000	90,000
<b>GXT 555R</b>	13,100	30	30	11' 0"	55,000	110,000
<b>GXT 665</b>	13,200	32	32	9' 0"	55,000	110,000
<b>GXT 665R</b>	14,700	32	32	12' 0"	68,000	120,000
<b>GXT 775</b>	15,500	35	37	9' 8"	68,000	135,000
<b>GXT 775R</b>	17,750	35	37	13' 0"	79,000	150,000
<b>GXT 995</b>	18,000	39	42	10' 8"	79,000	170,000
<b>GXT 995R</b>	20,000	39	42	14' 2"	100,000	180,000
<b>GXT 1555</b>	23,000	44	46	13' 5"	110,000	190,000
<b>GXT 1555R</b>	26,750	44	46	17' 2"	145,000	250,000
<b>GXT 2055</b>	32,000	48	50	14' 5"	145,000	Contact Factory
<b>GXT 2055R</b>	36,200	48	50	17' 7"	180,000	Contact Factory
<b>GXT 2555</b>	50,500	54	56	15' 5"	Contact Factory	Contact Factory
<b>GXT 2555R</b>	56,500	54	56	21' 5"	Contact Factory	Contact Factory

\*Weight includes mounting bracket to attach to excavator.

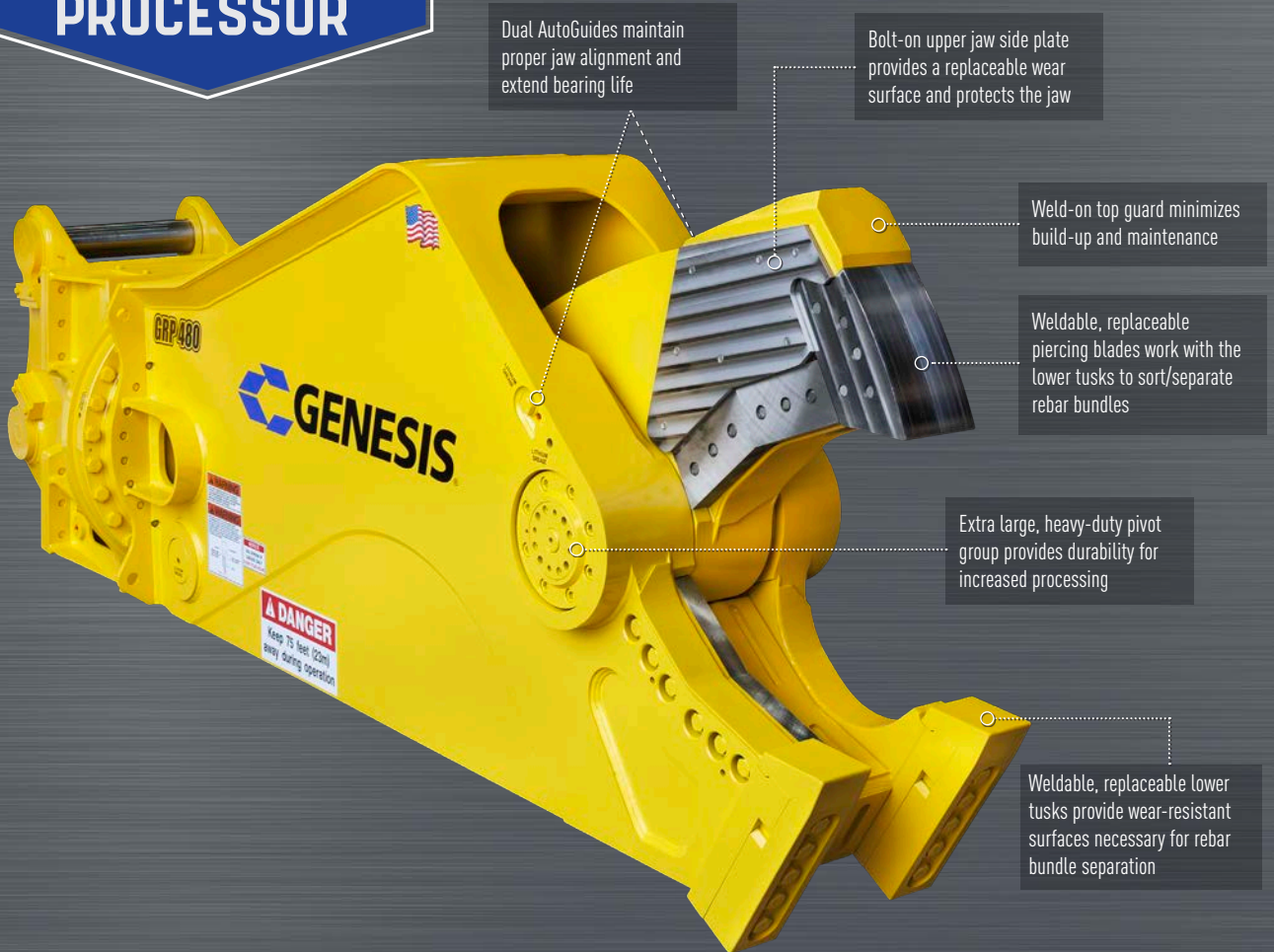
\*\*Distance is measured from the attachment mounting pivot (boom or stick) forward.

\*\*\*2nd-member installations that are at or near minimum excavator weight and all 3rd-member installations require pre-approval from Genesis.

\*\*\*\*The GXT 115 and GXT 115R have a single guide blade.

# GRP

## REBAR PROCESSOR



### GRP APPLICATIONS

- ▶ Rebar Processing

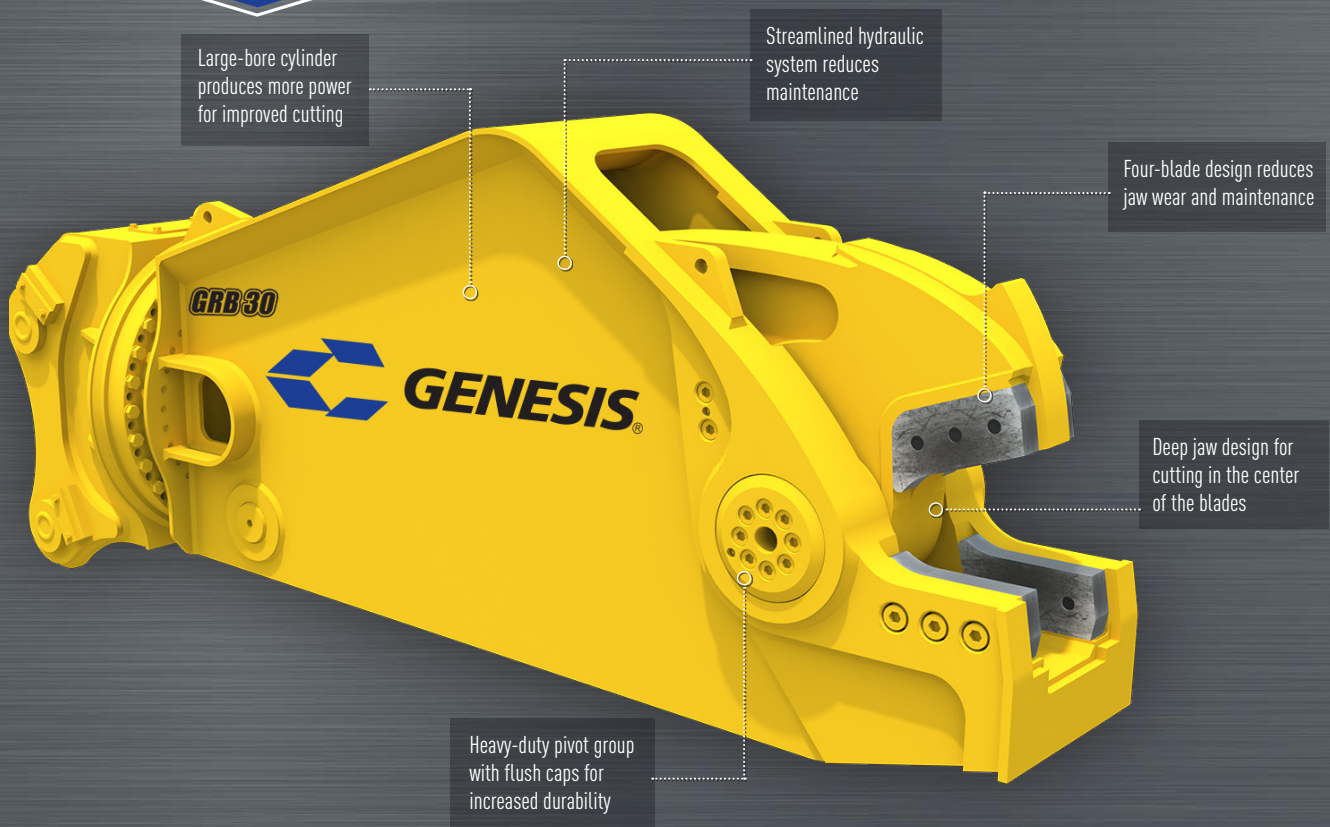
Model	Weight* (lbs.)	Jaw Opening (ins.)	Jaw Depth (ins.)	Reach** (ft. ins.)	Minimum Excavator Weight	
					Boom Mount (lbs.)	Stick Mount (lbs.)
GRP 480	11,900	24	26	10' 1"	48,000	90,000

\*Weight includes mounting bracket to attach to excavator.

\*\*Distance is measured from the attachment mounting pivot (boom or stick) forward.

# GRB

## RAIL BREAKER



### GRB APPLICATIONS

- ▶ Rail Processing  
– 136 lb. and smaller low chrome

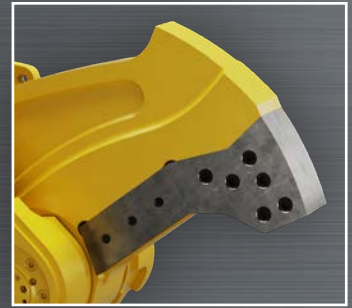
Model	Weight*	Jaw Opening	Jaw Depth	Minimum Excavator Weight	
	(lbs.)	(ins.)	(ins.)	Boom Mount (lbs.)	Stick Mount (lbs.)
GRB 30	6,900	9.75	13.25	40,000	55,000

\*Weight includes mounting bracket to attach to excavator.

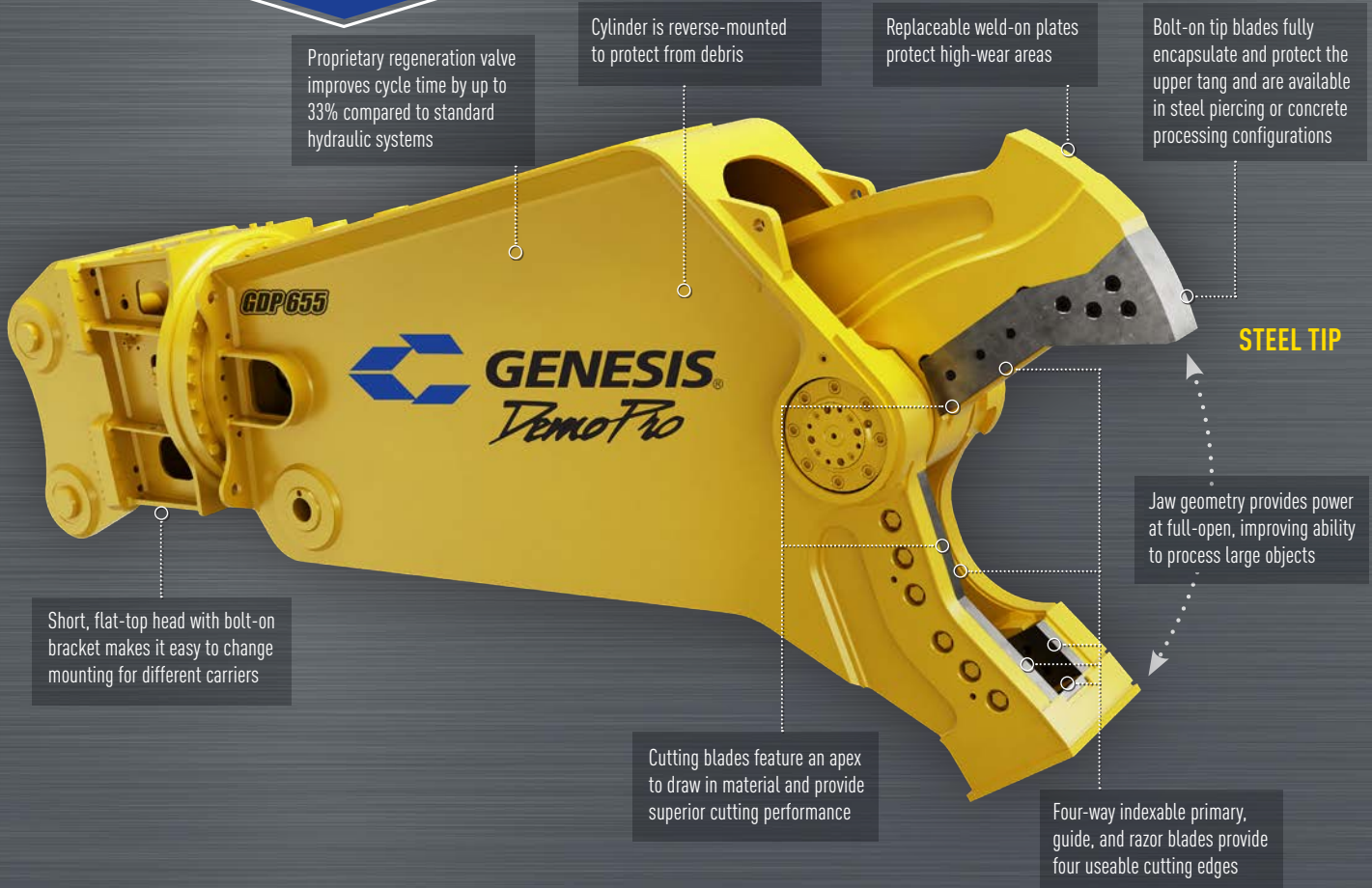
\*\*Distance is measured from the attachment mounting pivot (boom or stick) forward.

# GDP

## DEMOPRO



CONCRETE TIP



Proprietary regeneration valve improves cycle time by up to 33% compared to standard hydraulic systems

Cylinder is reverse-mounted to protect from debris

Replaceable weld-on plates protect high-wear areas

Bolt-on tip blades fully encapsulate and protect the upper tang and are available in steel piercing or concrete processing configurations

STEEL TIP

Jaw geometry provides power at full-open, improving ability to process large objects

Short, flat-top head with bolt-on bracket makes it easy to change mounting for different carriers

Cutting blades feature an apex to draw in material and provide superior cutting performance

Four-way indexable primary, guide, and razor blades provide four useable cutting edges

### GDP APPLICATIONS

- ▶ Demolition
- ▶ Bridge Dismantling and Processing
- ▶ Concrete Recycling

Model	Weight*	Jaw Opening		Jaw Depth	Reach**	Minimum Excavator Weight
	(lbs.)	Steel (ins.)	Concrete (ins.)	(ins.)	(ft. ins.)	Stick Mount (lbs.)
<b>GDP 655</b>	7,900	36	33	26	10' 4"	66,000

\*Weight includes mounting bracket to attach to excavator.

\*\*Distance is measured from the attachment mounting pivot (boom or stick) forward.



# GSS

## SUBSEA SHEAR

Multi-position rigging to hang and operate while suspended by a cable crane

Pressure tested to operate at depths down to 10,000 feet

Sealed, greaseable pivot points

Holes for easy draining and flushing

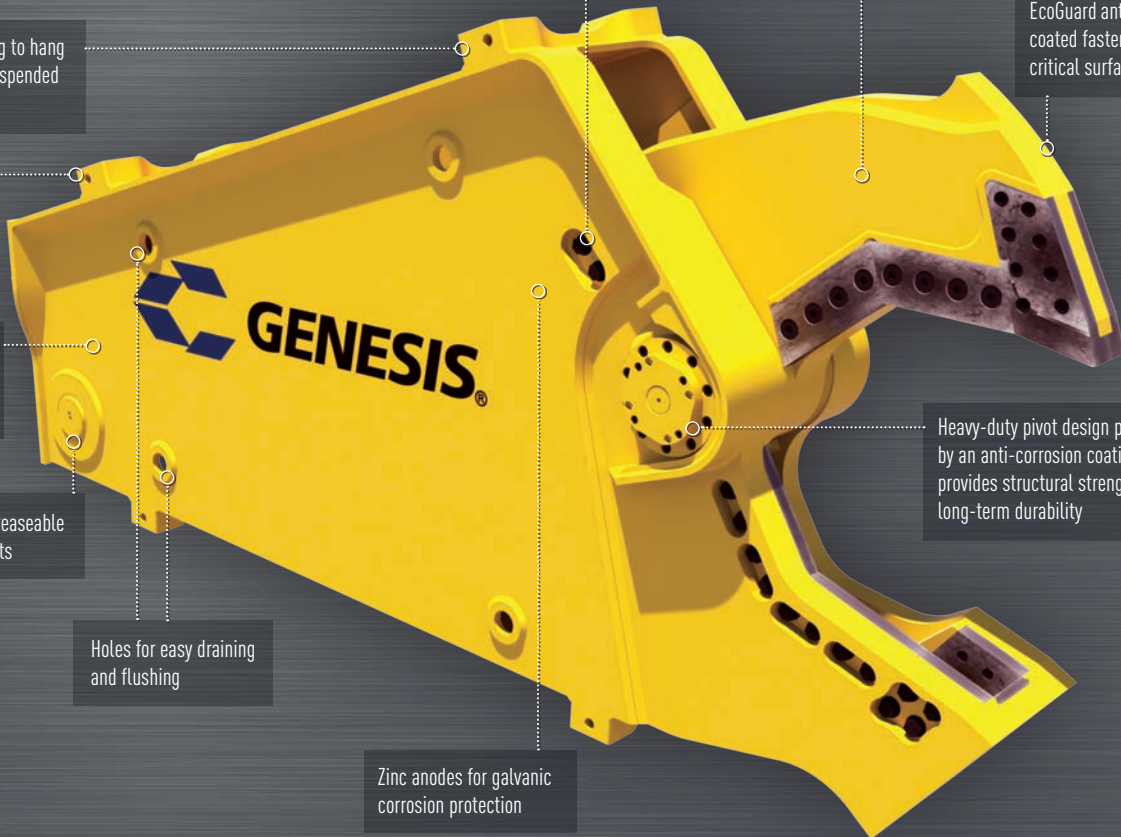
Zinc anodes for galvanic corrosion protection

Exclusive easy-to-shim AutoGuide system helps maintain blade tolerances by off-setting jaw deflection

Anti-corrosion primer and paint for supreme protection in harsh marine environments

EcoGuard anti-corrosion coated fasteners and critical surfaces

Heavy-duty pivot design protected by an anti-corrosion coating provides structural strength and long-term durability



### GSS APPLICATIONS

- ▶ Offshore Platform Decommissioning
- ▶ Offshore Pipeline and Piling Cutting
- ▶ Underwater Steel Cutting
- ▶ Cable Hung — Operated by Subsea Power Pack or from Surface Power

Model	Weight (lbs.)	Jaw Opening (ins.)	Jaw Depth (ins.)
GSS 665	12,300	32	32
GSS 2555	46,000	54	56

# M7

## CONCRETE CRACKER

Available with knock-around rotation or hydraulic rotation

– Knock-around rotation has adjustable brake and position locks

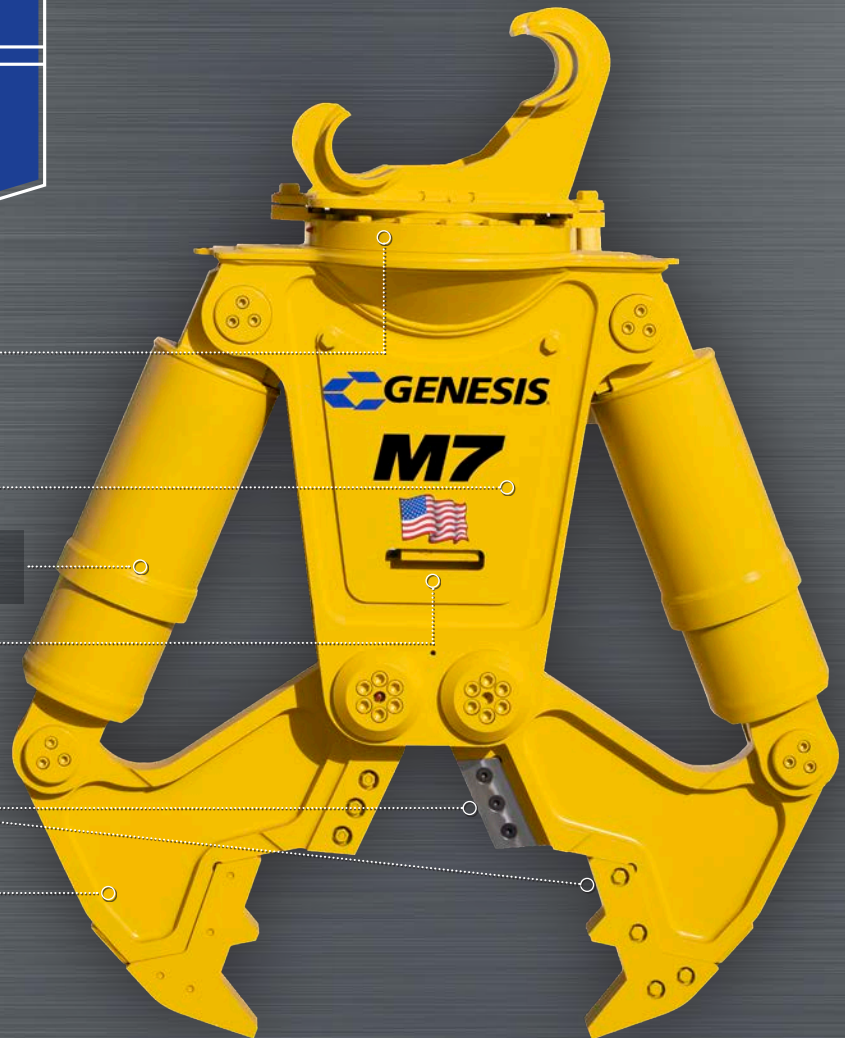
Hydraulic booster for increased power and speed

Fully guarded cylinder rod

Large access panels

Replaceable concrete teeth and blades

Solid Strenx® 900 steel jaws



Maintenance and transport stand included

### M7 APPLICATIONS

- ▶ Concrete Recycling
- ▶ Demolition

Model	Weight (lbs.)	Jaw Opening (ins.)	Jaw Depth (ins.)	Brokk® Model	Carrier Weight	
					Boom Mount (lbs.)	Stick Mount (lbs.)
M7	1,400	27	19	400, 500, 520	12,000 – 19,000	16,000 – 25,000

Strenx® is a trademark of the SSAB group of companies.  
Brokk® is a trademark of Brokk Global and Lifco Group.

# GVP

## VERSI PRO 07



Innovative bracket system accommodates a skid steer quick plate or a mini excavator lug plate change-over in 10 minutes

360° rotation comes standard with every Versi Pro

Available with full hydraulic or electric over hydraulic. Electric over hydraulic allows for jaw open or close and rotation with one hydraulic circuit.

Proprietary regeneration valve improves cycle time by up to 33% compared to standard hydraulic systems

Jaw change-outs in 10 minutes with the coupler-style connection system

Each jaw's pivot group stays intact, allowing the use of a press-fit pin design for a stronger, more durable product and making jaw change-outs safe, easy and fast



### SHEAR JAW

- ▶ Patented pivot geometry creates peak power for piercing and cutting
- ▶ Weld-on wear plate and piercing tip
- ▶ Four-way indexable guide blades and primary blades provide four useable cutting edges



### CRACKER JAW

- ▶ Patented pivot geometry creates peak power when jaws are fully open, where it's most needed to crush concrete
- ▶ Open relief design allows concrete to pass through lower jaw



### GRAPPLE JAW

- ▶ Recessed welds are protected from wear, increasing grapple life
- ▶ Boxed-tine construction creates a very high strength and lightweight grapple—each tine will withstand the full breakout force of the carrier
- ▶ Replaceable tine tips are abrasion-resistant
- ▶ Inside radius matches that of a 55-gallon barrel



### WIRE CUTTER JAW

- ▶ Designed for non-ferrous wire only
- ▶ Bolt-on interchangeable cutting blades can be sharpened and are easily replaced
- ▶ Curved jaw design gathers material deeper into the jaw for maximum cutting power
- ▶ Unique self-tensioning pivot group maintains optimal blade clearance



### Skid Steer Bracket

Mounting bracket option for skid steers features a traction grip to provide safe entry and exit for the operator

Jaws	Weight*	Jaw Opening	Jaw Depth	Reach** w/Jaws Installed	Minimum Excavator Weight		Minimum Skid Steer Weight (lbs.)
	(lbs.)	(ins.)	(ins.)	(ft. ins.)	Boom Mount (lbs.)	Stick Mount (lbs.)	
Shear	1,375	11.5	11.5	5' 6"	12,000	16,000	7,000
Cracker	1,385	14.5	13	5' 8"			
Grapple	1,420	32	15.5	5' 11"			
Wire Cutter	1,245	10.5	11.5	5' 9"			

### GVP 07 APPLICATIONS

- ▶ Interior Demolition
- ▶ Scrap Processing
- ▶ On-site Material Processing and Handling

\*Weight includes mounting bracket to attach to excavator.

\*\*Distance is measured from the attachment mounting pivot (boom or stick) forward.

The stability of each lift class varies between OEM skid steer and mini excavator models. Please consult with your Genesis salesperson for recommended carrier models. Joystick control packages are available for carriers less equipped.

# GVP

## VERSI PRO 15

Patented pivot system provides a power curve to match each jaw set's primary application

Each jaw's pivot group stays intact, allowing the use of a press-fit pin design for a stronger, more durable product and making jaw change-outs safe, easy and fast

Proprietary regeneration valve improves cycle time by up to 33% compared to standard hydraulic systems

360° rotation comes standard with every Versi Pro

Jaw change-outs in 10 minutes with the coupler-style connection system



### SHEAR JAW

- ▶ Patented bolt-on piercing tip is replaced in minutes without grinding or welding
- ▶ Four-way indexable guide blades, razor blade and primary blades provide four useable cutting edges
- ▶ Exclusive dual guide blade system accommodates heat expansion at the tip while maintaining tighter tolerances where the primary cutting blades pass



### CRACKER JAW

- ▶ Offset teeth rows maximize the ability to downsize material
- ▶ Patented pivot geometry creates peak power when jaws are near wide open, where it's most needed to crush concrete

## GVP 15 APPLICATIONS

### SHEAR JAW

- ▶ Scrap Processing
- ▶ Demolition
- ▶ Rebar
- ▶ Wire
- ▶ Tires
- ▶ Many Types of Non-ferrous

### CRACKER JAW

- ▶ Demolition
- ▶ Concrete Recycling
- ▶ C & D Processing

Jaws	Weight*	Jaw Opening	Jaw Depth	Reach**	Minimum Excavator Weight	
	(lbs.)	(ins.)	(ins.)	(ft. ins.)	Boom Mount (lbs.)	Stick Mount (lbs.)
Shear	3,200	16	15	7' 5"	18,000	28,000
Cracker	3,200	25	25	8' 3"		

\*Weight includes mounting bracket to attach to excavator.

\*\*Distance is measured from the attachment mounting pivot (boom or stick) forward. The stability of each lift class varies between OEM excavator models. Please consult with your Genesis salesperson for recommended carrier models.

# GRS

## REBAR SHEAR

# GLS

## LINKAGE SHEAR

Rhino horn designed to aid in positioning material for processing

Common pivot group and pinning points accommodate the GRS and GLS with one stiff arm—the mounting pad remains in place

Patented bolt-on piercing tip is replaced in minutes without grinding or welding

Shrouded heavy-duty pivot design provides structural strength and long-term durability

Four-way indexable blades provide four useable cutting edges

Four-way indexable guide blades, razor blade and primary blades provide four useable cutting edges

Staggered jaws make two cuts with each cycle, applying maximum force to each cut

16-inch cut length for higher value end product

Cutaway chin plate provides a relief area for balled rebar while maintaining the rigid structural integrity of the lower jaw

## POWER Series

### GRS & GLS APPLICATIONS

- ▶ Scrap Processing
- ▶ Demolition
- ▶ C & D Processing
- ▶ Concrete Recycling

### STIFF ARM AND MOUNTING PAD

Comes standard with each GRS and GLS



Model	Weight* (lbs.)	Jaw Opening** (ins.)	Jaw Depth (ins.)	Excavator Weight (lbs.)
GRS 70	6,098	26	27	65,000-80,000
GRS 90	6,718	30	30	80,000-110,000

\*Weight includes mounting bracket and stiff arm.  
 \*\*Jaw opening varies slightly depending on excavator mounting location.  
 Genesis linkage attachments are not compatible with quick couplers.  
 Contact Genesis for more information.

Model	Weight* (lbs.)	Jaw Opening** (ins.)	Jaw Depth (ins.)	Excavator Weight (lbs.)
GLS 50	4,100	21	21	40,000-60,000
GLS 70	4,696	24	24	60,000-80,000
GLS 90	5,313	27	27	80,000-110,000

\*Weight includes mounting bracket and stiff arm.  
 \*\*Jaw opening varies slightly depending on excavator mounting location.  
 Genesis linkage attachments are not compatible with quick couplers.  
 Contact Genesis for more information.

# GRX

## RAZER X MULTI-JAW DEMOLITION TOOL

### CRACKER JAW

Reversible, long-life crushing teeth are quickly and easily replaced, eliminating build-up

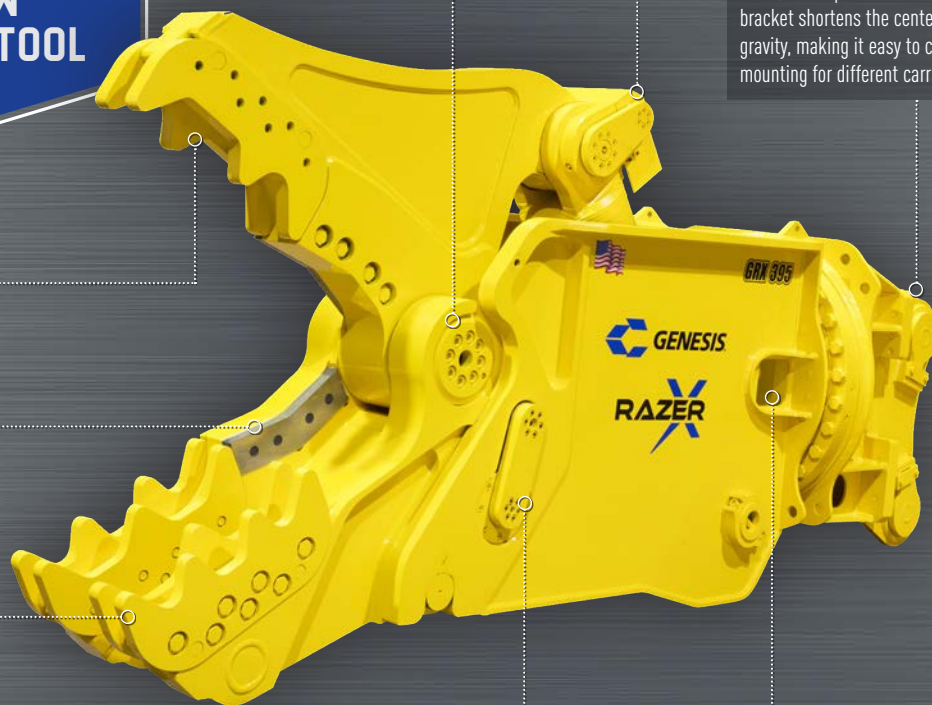
4-way indexable cutting blades feature an apex that draws material deeper into the jaw for more efficient cutting

Easy-to-change crushing teeth are available in several configurations to maximize performance in any application

Heavy-duty pivot design is integral to the jaw set, providing a power curve to match the jaw's primary application

Reverse-mounted cylinder protects the rod from debris

Short, flat-top head with bolt-on bracket shortens the center of gravity, making it easy to change mounting for different carriers



Hydraulic pin engagement and removal for jaw change-outs in less than 2 minutes without leaving the cab

Proprietary regeneration valve improves cycle time by up to 33% compared to standard hydraulic systems

### SHEAR JAW

Weld-on, replaceable, highly abrasion-resistant steel rhino horn protects front of upper jaw, reducing maintenance

Bolt-on piercing tip encapsulates front of upper jaw, minimizing risk of damage and reducing maintenance

Dual guide blade length matches piercing tip length so blades can be shimmed independently to accommodate piercing tip wear





### PULVERIZER JAW



### SHEAR JAW STAND

Jaw stands are specific to each jaw set, providing correct positioning for efficient change-outs

Extended wear plates aid in positioning concrete for processing

Indexable blades provide two usable edges

Reversible, long-life crushing teeth are quickly and easily replaced, eliminating build-up



### GRX APPLICATIONS

- ▶ Concrete Recycling
- ▶ C & D Processing
- ▶ Bridge Demolition
- ▶ Wire
- ▶ Copper
- ▶ Structural Steel
- ▶ Demolition
- ▶ Rebar
- ▶ Aluminum

Model	Jaw	Weight*	Jaw Opening	Jaw Depth	Reach**	Minimum Excavator Wt.
		(lbs.)	(ins.)	(ins.)		(ft. ins.)
GRX 195	Cracker	5,500	30	30	8' 9"	45,000
	Shear	5,200	18	18		
	Pulverizer	5,500	29	26		
GRX 295	Cracker	7,100	38	32	9' 4"	66,000
	Shear	6,900	20	20		
	Pulverizer	7,300	38	30		
GRX 395	Shear	10,500	24	25.5	10' 6"	90,000
	Cracker	10,750	45	42		
	Pulverizer	11,000	45	36		



\*Weight includes mounting bracket to attach to excavator.

\*\*Distance is measured from the attachment mounting pivot (boom or stick) forward.

# LXP<sup>®</sup>

## LOGIX PROCESSOR

Patented pivot system provides a power curve to match the jaw's primary application:

- peak power at pierce for shear jaw
- peak power at fully open for cracker and pulverizer jaws

Each jaw's pivot group stays intact, allowing the use of a press fit design for a stronger, more durable product

Reverse-mounted cylinders protect the rods from debris

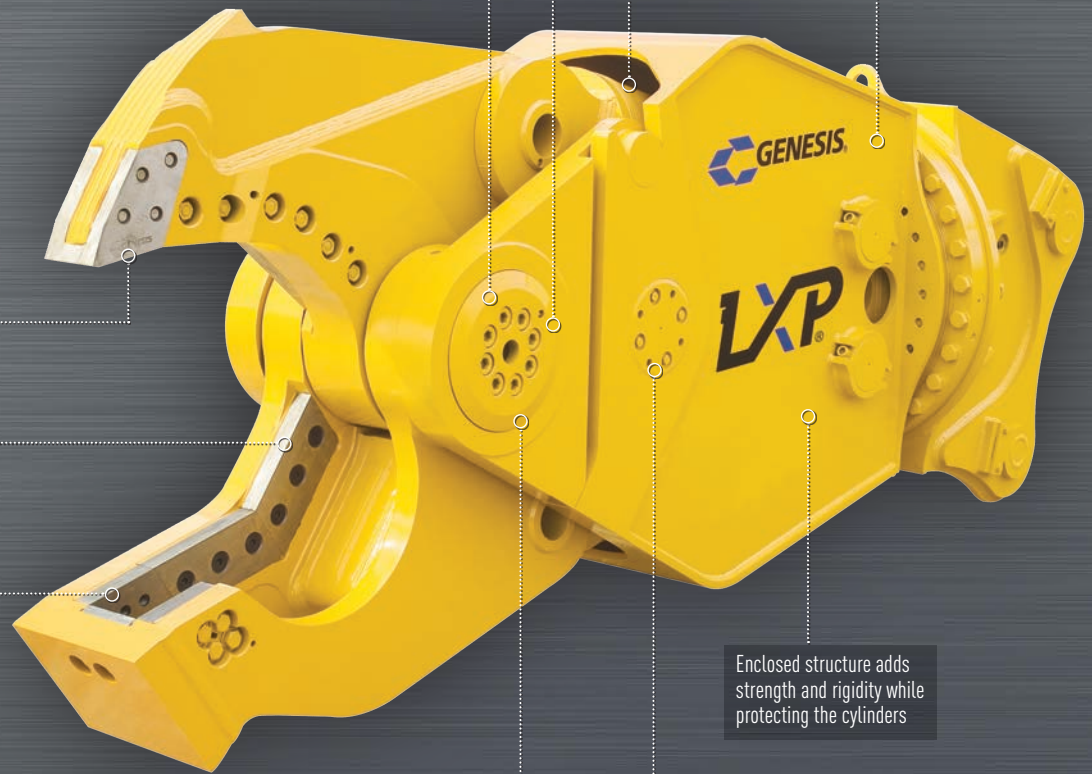
Proprietary regeneration valve improves cycle time by up to 33% compared to standard hydraulic systems

### SHEAR JAW

Patented bolt-on piercing tip is replaced in minutes without grinding or welding

Four-way indexable guide blades, razor blade and primary blades provide four useable cutting edges

Exclusive dual guide blade system accommodates heat expansion at the tip while maintaining tighter tolerances where the primary cutting blades pass (300 - 800 models only)



Enclosed structure adds strength and rigidity while protecting the cylinders

Heavy-duty pivot design with recessed caps provides structural strength and long-term durability

Jaw change-outs in 15 minutes with the coupler style connection system, hydraulically activated lock pin, jaws that stay intact and a stand with every jaw set - safe, easy and fast



### JAW STANDS

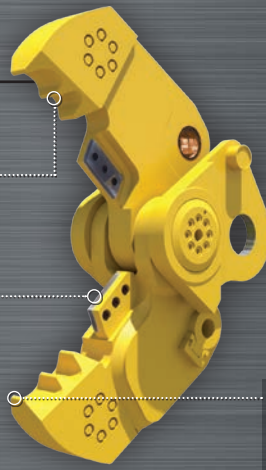
LXP 200 & 300: 680 lbs.  
LXP 400 & 500: 780 lbs.  
LXP 800: 1,100 lbs.



## CRACKER JAW 200-500

Teeth are easy to change and fully protect the parent material, eliminating the need for build-up and hard-surfacing (200-500 models only)

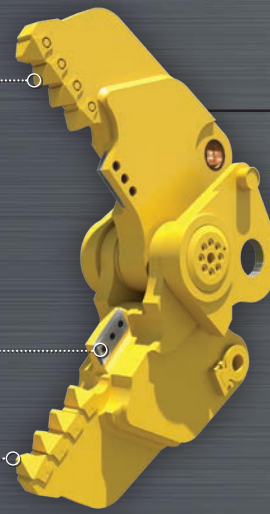
Indexable blades provide two useable cutting edges



Bolt-on teeth and blades reduce maintenance and downtime (800 model only)

Indexable blades provide two useable cutting edges

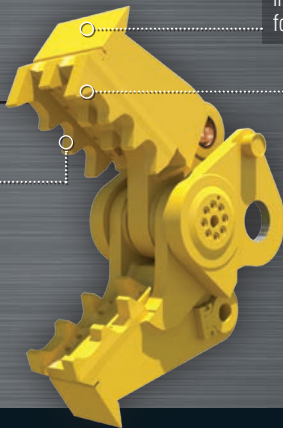
Cracker tips concentrate force for a greater ability to crush through heavy concrete



## CRACKER JAW 800

## PULVERIZER JAW 200-500

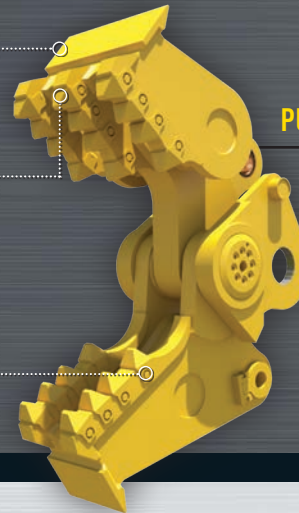
Bolt-on tooth bed features a fully replaceable crushing surface, eliminating the need for welding (200-500 models only)



Extended wear plates aid in positioning concrete for processing

Tips concentrate force for a greater ability to crush through heavy concrete

Bolt-on teeth reduce maintenance and downtime (800 model only)



## PULVERIZER JAW 800

### LXP® APPLICATIONS

#### SHEAR JAW

- ▶ Demolition
- ▶ Bridge Demolition
- ▶ Structural Steel
- ▶ Rebar
- ▶ Wire
- ▶ Aluminum
- ▶ Copper

#### CRACKER JAW

- ▶ Concrete Recycling
- ▶ C & D Processing
- ▶ Rebar
- ▶ Demolition

#### PULVERIZER JAW

- ▶ Demolition
- ▶ Concrete Recycling
- ▶ C & D Processing
- ▶ Rebar

Model		Weight*	Jaw Opening	Jaw Depth	Reach**	Minimum Excavator Weight	
		(lbs.)	(ins.)	(ins.)		Boom Mount (lbs.)	Stick Mount (lbs.)
LXP 200	Shear	5,370	17	19	8' 0"	20,000	45,000
	Pulverizer	5,670	29	24			
	Cracker	5,650	38	28			
LXP 300	Shear	7,600	22	24	8' 6"	45,000	70,000
	Pulverizer	7,270	35	26			
	Cracker	7,560	43	30			
LXP 400	Shear	11,065	24	27	9' 6"	60,000	100,000
	Pulverizer	11,255	38	30			
	Cracker	11,145	47	33.5			
LXP 500	Shear	12,905	27	28	9' 11"	70,000	120,000
	Pulverizer	12,205	43	31			
	Cracker	12,715	51	34.5			
LXP 800	Shear	17,500	40	35	11' 8"	90,000	150,000
	Pulverizer	17,720	61	39			
	Cracker	17,600	71	50			

\*Weight includes mounting bracket to attach to excavator.

\*\*Distance is measured from the attachment mounting pivot (boom or stick) forward.



# GDT

## RAZER DEMOLITION TOOL

Cylinder is reverse-mounted to protect from debris

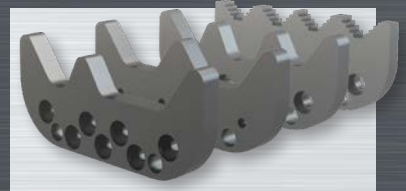
Short, flat-top head with bolt-on bracket shortens the center of gravity while making it easy to change mounting for different carriers

Reversible, long-life crushing teeth are quickly and easily replaced, eliminating build-up

4-way indexable cutting blades feature an apex that draws material deeper into the jaw for more efficient cutting

Open lower jaw allows material being processed to easily pass through, preventing jamming

Easy-to-change crushing teeth are available in several configurations to maximize performance in any application



### GDT APPLICATIONS

- ▶ High-Reach Demolition
- ▶ Concrete Recycling
- ▶ C & D Processing
- ▶ Bridge Demolition
- ▶ Wire
- ▶ Copper
- ▶ Structural Steel
- ▶ Demolition
- ▶ Rebar
- ▶ Aluminum

Model	Weight*	Jaw Opening	Jaw Depth	Reach**	Minimum Excavator Wt.
	(lbs.)	(ins.)	(ins.)	(ft. ins.)	Stick Mount (lbs.)
<b>GDT 190</b>	4,900	31	33	8' 0"	45,000
<b>GDT 290</b>	7,000	39	42	9' 2"	66,000
<b>GDT 390</b>	10,000	46	45	10' 6"	90,000
<b>GDT 590</b>	15,100	52	46.5	12' 4"	120,000
<b>GDT 890</b>	20,000	64	62	13' 10"	180,000

\*Weight includes mounting bracket to attach to excavator.

\*\*Distance is measured from the attachment mounting pivot (boom or stick) forward.

# GDR

## DEMOLITION RECYCLER



Extended upper plate aids in positioning concrete for processing

Reverse-mounted cylinder protects cylinder rod from debris

360° rotation comes standard with every GDR

### 300/400 CRACKER JAW CONFIGURATION

Weld-on tooth and blade pockets greatly improve the ability to maintain the jaws, extending the GDR's useful life

Indexable blades provide two useable cutting edges

Bolt-on teeth and blades reduce maintenance time

Extended chin aids in positioning concrete for processing

Heavy-duty pivot design with recessed end caps provides structural strength and long-term durability

Combination of a large-bore cylinder and a regeneration valve eliminates the need for an intensifier and a complex hydraulic system

## JAW CONFIGURATIONS

### GDR APPLICATIONS

- ▶ Concrete Recycling
- ▶ Bridge Demolition
- ▶ C & D Processing
- ▶ Structural Steel
- ▶ Demolition
- ▶ Rebar
- ▶ Wire
- ▶ Aluminum
- ▶ Copper



**Pulverizer**  
150 & 200 models



**Pulverizer**  
300 & 400 models



**Cracker**  
150 & 200 models



**Shear**  
150, 200 & 300 models only

Model	Weight* (lbs.)	Jaw Opening (ins.)	Jaw Depth (ins.)	Reach** (ft. ins.)	Minimum Excavator Wt. Stick Mount (lbs.)
<b>GDR 150</b>	3,450	26	25	6' 4"	28,000
<b>GDR 200</b>	5,500	35	32	7' 7"	45,000
<b>GDR 300</b>	7,900	43	39	8' 9"	70,000
<b>GDR 400</b>	11,000	48	41	9' 10"	100,000

\*Weight includes mounting bracket to attach to excavator.

\*\*Distance is measured from the attachment mounting pivot (boom or stick) forward.

# GCP

## CONCRETE PROCESSOR



Proprietary regeneration valve improves cycle time by up to 33% compared to standard hydraulic systems

Heavy-duty pivot design with recessed end caps provides structural strength and long-term durability

Unique bolt-on wear parts quickly separate rebar from concrete

One-piece bolt-on tooth bed and bottom wear pad protect parent material, are quick and easy to replace, and minimize build-up and hard-surfacing

Large jaw opening readily pulverizes thick concrete

Bolt-on rebar cutting blades and weld-in blade pockets are easy to replace and reduce maintenance

### GCP APPLICATIONS

- ▶ Concrete Recycling
- ▶ Demolition

Model	Weight*	Jaw Opening	Jaw Depth	Jaw Width	Reach**	Minimum Excavator Wt.
	(lbs.)	(ins.)	(ins.)	(ins.)	(ft. ins.)	Stick Mount (lbs.)
<b>GCP 410</b>	4,650	34	29	20	6' 9"	45,000
<b>GCP 410R</b>	6,650	34	29	20	7' 9"	55,000
<b>GCP 610</b>	10,350	49	40	30	8' 8"	75,000
<b>GCP 610R</b>	11,550	49	40	30	9' 8"	95,000

\*Weight includes mounting bracket to attach to excavator.

\*\*Distance is measured from the attachment mounting pivot (boom or stick) forward.

# GCC

## CONCRETE CRACKER



Common pivot group and pinning points accommodate the GCC with one stiff arm—the mounting pad remains in place

Shrouded heavy-duty pivot design provides structural strength and long-term durability

Blade profile focuses force for optimal concrete processing and rebar cutting

Bolt-on wear parts can be rotated, maximizing blade life and minimizing downtime

Extended chin blade aids in positioning concrete for processing

## POWER Series

### GCC APPLICATIONS

- ▶ Scrap Processing
- ▶ Demolition
- ▶ C & D Processing
- ▶ Concrete Recycling

### STIFF ARM AND MOUNTING PAD

Comes standard with each GCC



Model	Weight*	Jaw Opening**	Excavator Weight
	(lbs.)	(ins.)	(lbs.)
<b>GCC 50</b>	4,400	29	40,000-60,000
<b>GCC 70</b>	4,990	32	60,000-80,000
<b>GCC 90</b>	5,170	36	80,000-110,000

\*Weight includes mounting bracket and stiff arm.

\*\*Jaw opening varies slightly depending on excavator mounting location.

Genesis linkage attachments are not compatible with quick couplers. Contact Genesis for more information.

# GMP D

## MECHANICAL PULVERIZER D SERIES

### GMP 50D / 70D WELD-IN TEETH JAW CONFIGURATION

Weld-in teeth can be rebuilt in place for extended life

Extended link pin position provides optimal power

### GMP 50D / 70D BOLT-IN TEETH JAW CONFIGURATION

Bolt-in teeth are easily replaced in the field for minimal downtime and can be rotated front to back for longer life

Pass-through jaw design provides easy material processing and prevents jamming

All teeth extend beyond chin to protect parent steel from wear and abrasion

Extended chin blade aids in positioning concrete for processing



Model	Weight*	Jaw Opening**	Jaw Depth	Moving Jaw Width	Fixed Jaw Width	Tooth Config.	Excavator Weight
	(lbs.)	(ins.)	(ins.)	(ins.)	(ins.)		(lbs.)
<b>GMP 50D</b>	4,650	36	25	24	32	3/4	40,000-60,000
<b>GMP 70D</b>	5,050	40	29	26.5	34	4/5	60,000-80,000
<b>GMP 90D</b>	6,400	44	32.5	32.5	40	4/5	80,000-110,000

\*Weight includes mounting bracket and stiff arm.

\*\*Jaw opening varies slightly depending on excavator mounting location.



### STIFF ARM AND MOUNTING PAD

Comes standard with each GMP D

### GMP D APPLICATIONS

- ▶ Demolition
- ▶ C & D Processing
- ▶ Concrete Recycling

# GHG

## HANDLING GRAPPLE

Hydraulic side connections

No case drain line needed

Powerful hydraulic rotation motor

Easy accessibility for rotation speed adjustment

Pilot check valve prevents unexpected opening of the arms

Break valves integrated into the hydraulic motor

Hydraulic cylinder with cushion at the end of the opening

High-wear areas manufactured of abrasion-resistant Hardox®

Cutters feature a hardness of 500HB

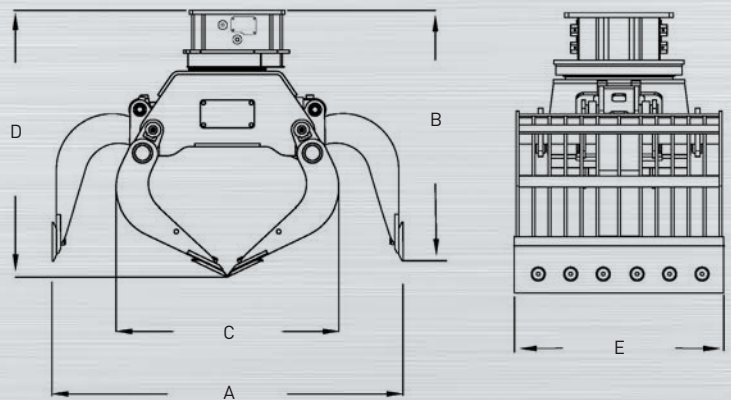
Oversized main pins combined with wear bushings and sealed with O-rings

Easy maintenance



### GHG APPLICATIONS

- ▶ Waste Handling and Recycling
- ▶ C & D Material Handling and Sorting
- ▶ Primary Demolition



Model	DIAGRAM DIMENSION		A	B	C	D	E	Minimum Machine Size (mt)
	Capacity (yd³)	Weight (lbs.)	Jaw Open Width (ins.)	Jaw Open Height (ins.)	Jaw Closed Width (ins.)	Jaw Closed Height (ins.)	Tine Width Footprint (ins.)	
GHG 16	0.6	1,929	73	49	48	54	34	10-16
GHG 20	0.65	2,712	81	51	52	57	37	14-20
GHG 25	0.8	3,197	85	52	52	59	44	16-26
GHG 30	1.0	4,079	95	58	62	65	44	18-30
GHG 40	1.2	4,519	95	58	62	65	54	25-40
GHG 50	1.4	5,512	96	61	66	65	57	35-50

Hardox® is a trademark of the SSAB group of companies.

# GSG

## SCRAP GRAPPLE

High-torque continuous 360° rotation for handling large and uneven loads

Heavy-duty guarding system completely protects cylinders and internal components, removes easily for internal maintenance access

Large bore hydraulic cylinders maximize clamping force

Long-life, abrasion-resistant steel tips are easily replaced with simple perimeter weld

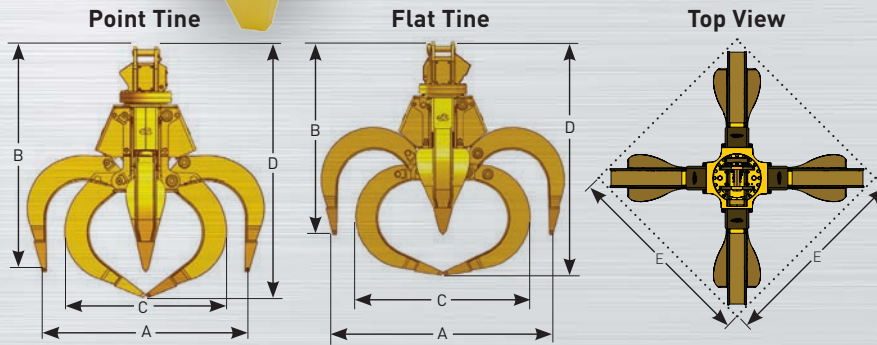
Large diameter hardened steel pins with integrated shear-proof pin retainers

All tine styles feature fully boxed construction for strength and durability



### GSG APPLICATIONS

- ▶ Scrap Handling
- ▶ C & D Sorting
- ▶ Bulk Material Handling

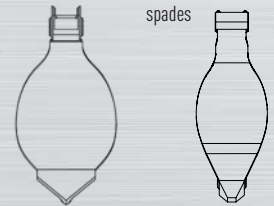


### TINE CONFIGURATIONS

Flat tine models 50-125 available with wide spades

Point tine available with medium spades only

Flat tine models 50-250 available with medium spades



Model	DIAGRAM DIMENSION			A		B		C		D		E	
	Capacity (yd³)	Weight** (lbs.)	Min. Machine Size (mt)	Jaw Open Width (ins.)		Jaw Open Height (ins.)		Jaw Closed Width (ins.)		Jaw Closed Height (ins.)		Footprint (ins.)	
				Flat Tine	Point Tine	Flat Tine	Point Tine	Flat Tine	Point Tine	Flat Tine	Point Tine	Flat Tine	Point Tine
<b>GSG 50</b>	0.50	3,050	20	***	64	***	81	***	52	***	88	***	60
<b>GSG 65</b>	0.65	3,150	20	***	69	***	83	***	54	***	91	***	64
<b>GSG 75</b>	0.75	3,250	20	74	76	***	85	***	59	91	95	***	70
<b>GSG 100</b>	1	3,500	22	79	80	***	90	***	68	93	100	***	73
<b>GSG 100 HD*</b>	1	4,300	25	78	79	77	86	66	63	91	98	71	72
<b>GSG 125</b>	1.25	3,600	22	89	86	***	92	***	71	98	101	***	79
<b>GSG 125 HD*</b>	1.25	4,500	27	85	86	79	88	71	67	95	102	77	78
<b>GSG 150</b>	1.5	4,800	30	91	89	81	94	75	72	100	108	80	81
<b>GSG 200</b>	2	5,000	40	96	95	82	96	78	76	103	112	84	86
<b>GSG 250</b>	2.5	5,700	45	108	105	84	100	86	85	109	118	94	95

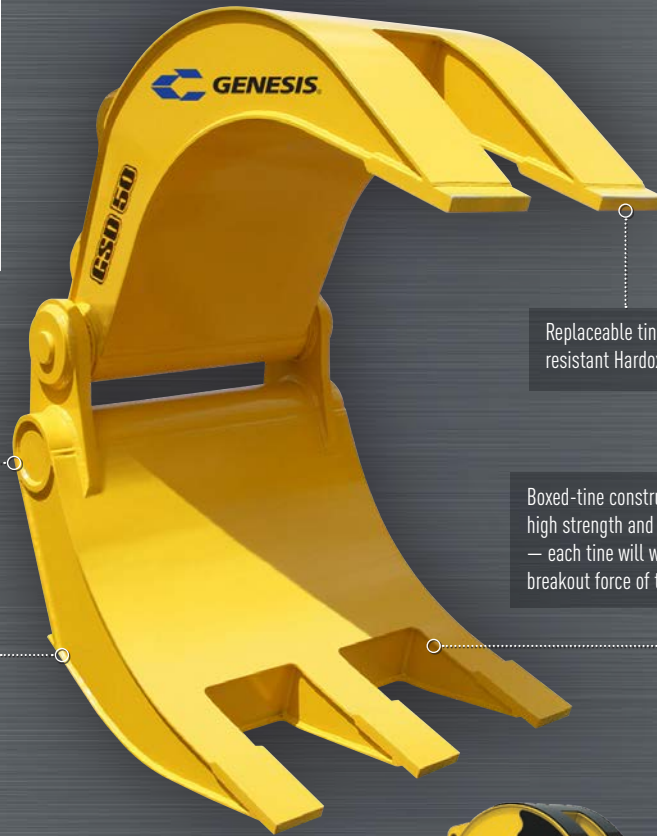
\*Heavy-duty  
\*\*Weight includes yoke.

\*\*\*Contact your local Genesis Regional Manager for additional information.



# GSD

## SEVERE-DUTY GRAPPLE



Patented pivot group features a large pivot shaft, and bearings provide long-term durability

Recessed welds are protected from wear, increasing grapple life

Replaceable tine tips are abrasion-resistant Hardox® steel

Boxed-tine construction creates a very high strength and lightweight grapple — each tine will withstand the full breakout force of the excavator

### GSD APPLICATIONS

- ▶ Demolition
- ▶ Scrap Handling & Compaction
- ▶ Rip-rap Handling
- ▶ Road Building & Reconstruction
- ▶ C & D Sorting
- ▶ Land Clearing



**STIFF ARM AND MOUNTING PAD** | Comes standard with each GSD



GSD Full Kit

GSD Tine Kit



Model	Weight*	Capacity	Jaw Opening**	Jaw Closed	Moveable Jaw Width	Lower Jaw Width	Excavator Weight
	(lbs.)	(yd <sup>3</sup> )	(ins.)	(ins.)	(ins.)	(ins.)	(lbs.)
<b>GSD 10</b>	555	0.5-0.8	64	7	13	22	10,000-20,000
<b>GSD 30</b>	2,110	1.5-2.5	84	8	21	35	24,000-30,000
<b>GSD 40</b>	2,620	2.0-3.0	92	9	26	38	30,000-40,000
<b>GSD 50</b>	3,300	3.0-4.0	99	10	30	44	35,000-65,000
<b>GSD 70</b>	4,430	3.5-4.5	121	12	30	44	65,000-85,000
<b>GSD 90</b>	5,950	4.5-6.5	131	12	34	50	85,000-120,000
<b>GSD 140</b>	7,500	6.5-7.5	140	15	34	50	120,000-170,000
<b>GSD 170</b>	9,600	7.5-10.0	150	16	40	58	170,000-220,000
<b>GSD 250</b>	16,500	8.5-12.0	150	16	40	68	220,000-280,000

\*Weight includes mounting bracket and stiff arm.

\*\*Jaw opening varies slightly depending on excavator mounting location.

Hardox® is a trademark of the SSAB group of companies.

# TECHNICAL SERVICE TRAINING

## Procedures. Products. People.

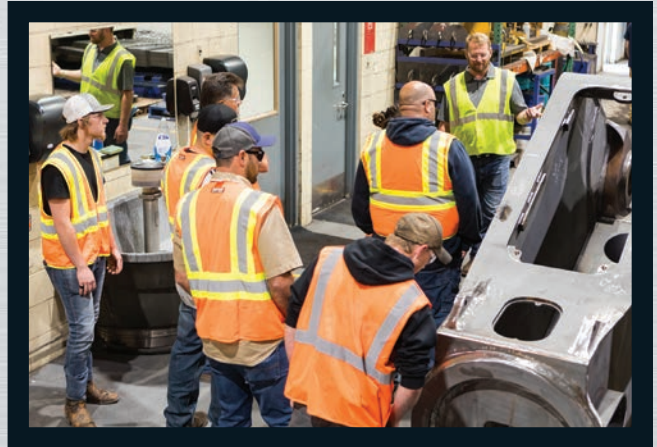
Train with the best in the business.  
Maximize your productivity and the value  
of your attachments.

Designed for Genesis customer and dealer service supervisors and technicians, Technical Service Training provides attendees the maintenance, repair and troubleshooting procedures recommended for their attachments.

Held in Superior, WI, the two-day sessions feature not only classroom learning but also a Genesis factory tour, enabling attendees to see first-hand how attachments are built and meet the people who build them. Instructional topics include installation, operation, welding, hydraulics, rotation and swivels.

Classes are typically held April through October, and there is no cost to attend. Attendees are responsible for only their airfare or ground transportation. Genesis covers all other training related expenses.

Class size is limited, so early registration is recommended. However, if there is a large number of people from one organization who want to attend, we may be able to come to you. Customer and dealer on-site training should be discussed and planned with your Genesis Regional Manager.



See [genesisattachments.com/support/technical-service-training](https://genesisattachments.com/support/technical-service-training) for class dates, registration and complete information.

# GENESIS OEM PARTS

Only Genesis Wear Parts provide:

- ▶ Engineered performance
- ▶ Precise OEM fit
- ▶ Extended life



We know attachments are used in the most extreme conditions, and when steel cuts steel or crushes concrete, blades, teeth and other components are going to wear and need to be replaced.

To keep you operating, Genesis offers a complete selection of individual wear parts and wear parts kits for blades and teeth, as well as hydraulic components and maintenance tools and supplies.

## MOBILE SHEAR BLADES AND WEAR PARTS KITS

**MAXX-NiFe** Genesis offers a wide range of premium mobile shear blades for all applications. Maxx-NiFe® high-nickel blades for extreme duty and longer life. Standard blades for typical scrap processing, and serrated blades for a variety of applications including rebar processing and cutting cable.



## DEMOLITION TOOL & PROCESSOR TEETH AND WEAR PARTS KITS

We stock an extensive inventory of individual blades, teeth, shims, bolts, nuts and washers in addition to complete wear parts kits for all Genesis demolition and processing attachments.



## HYDRAULICS

We have a complete inventory of the highest-grade hydraulic components for all Genesis attachments including swivels, motors, gearboxes, regeneration valves, cartridges, valves, seal kits and hoses.



## MAINTENANCE

Genesis has the tools and supplies you need to keep your attachment running — demolition tooth build-up templates, Genrod and Genwire welding supplies, torque wrenches, torque multipliers, sockets, GLG-2® extreme-pressure grease, grinders and other hand tools.



# REBUILD SERVICES

## Repair. Restore. Rebuild.

Genesis offers complete refurbishment, repair and restoration services that extend attachment life and your return on investment.

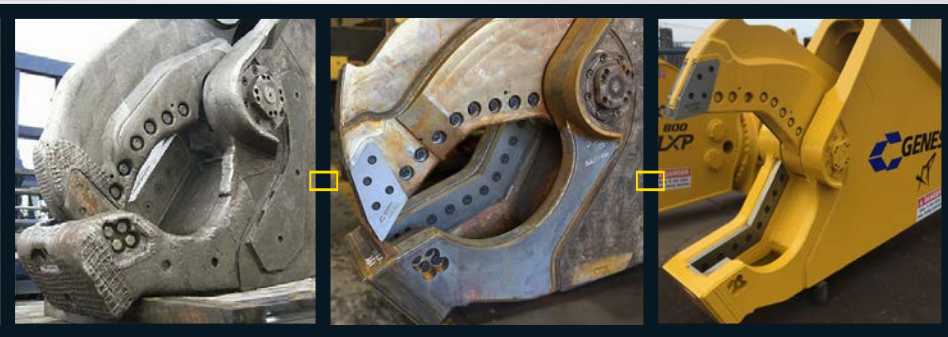


### EXTEND THE SERVICE LIFE OF YOUR ATTACHMENT

When purchasing a new attachment isn't necessary or even an option, turn to Genesis Rebuild Services. We will extend the life of your worn out attachments by bringing them back to factory specs.

Genesis has quickly repaired and rebuilt hundreds of attachments. And every rebuilt Genesis attachment features a six-month warranty on all repairs.

Contact your Genesis Regional Manager for additional Rebuild Services information or visit [genesisattachments.com](http://genesisattachments.com)



### REBUILD COMPONENTS INCLUDE:

- ▶ Upper and lower jaws
- ▶ Main shaft
- ▶ Cylinder
- ▶ Brackets
- ▶ Parent material that no longer supports the blades
- ▶ Upper and lower jaw knife edges that no longer run parallel

# SHEAR JAW ARMOR®

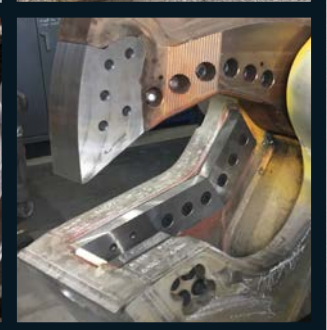
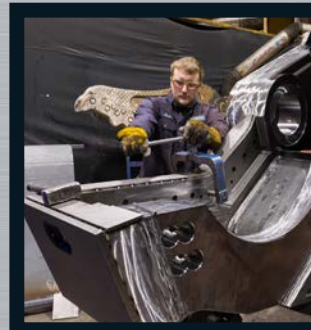
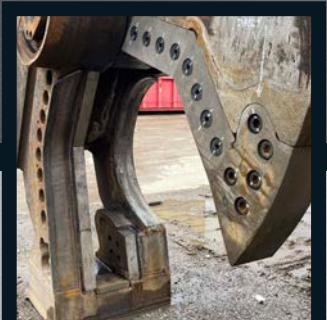
## Tough. Long-lasting. Reliable.



Attachments protected with Genesis Shear Jaw Armor® and Grapple Jaw Armor not only deliver productivity, uptime and value, but also far exceed normal wear cycles.

Constructed from our proprietary GenGuard steel, the Jaw Armor abrasion-resistant system maintains structural integrity and reduces build-up and hard-surfacing downtime.

- ▶ Reduces downtime and welding maintenance expense
- ▶ Virtually eliminates build-up and hard-surfacing
- ▶ Does not affect shear blade mounting
- ▶ Available on new and for existing attachments



# MANUFACTURING

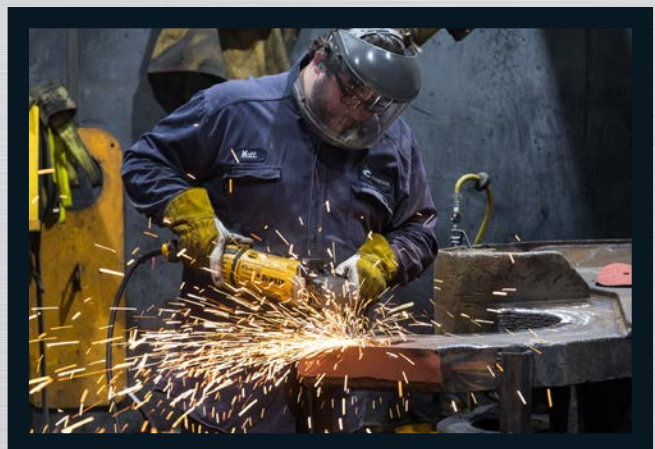
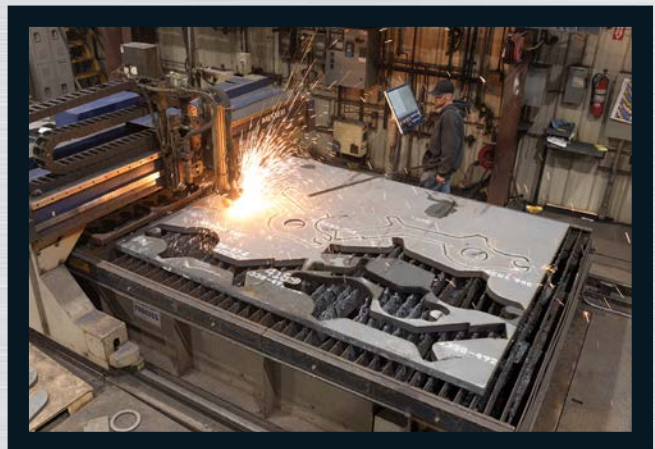
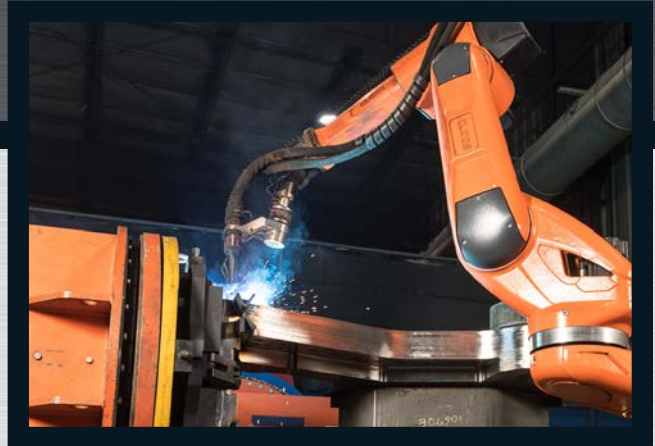
The people and technology behind our Promise of Performance

Making industry-leading attachments that withstand the daily rigors of demolition, scrap processing and material handling applications requires not only the most rugged materials and components, but also highly skilled people and the latest manufacturing technology.

Genesis engineers, welders, machinists and assemblers have years of attachment manufacturing experience and strive to produce only the highest quality shears, processors and grapples.

Our investments in automation, machining and welding equipment, and factory upgrades facilitate accuracy and efficiency as well as promote continuous improvement.

Thanks to our people and technology, Genesis attachments are industry workhorses designed to improve our customers' productivity and profitability for many years. That's our Promise of Performance.



Most Genesis attachments are covered by a 12-month, 1,500-hour (whichever occurs first) warranty. Genesis reserves the right to continually make product improvements designed to positively enhance performance. Patents: [genesisattachments.com/products/patents](https://www.genesisattachments.com/products/patents)

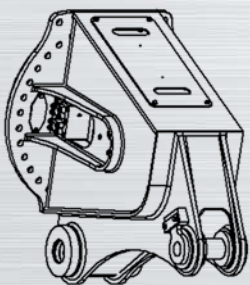
# MULTI-MACHINE MOUNTING

## Brackets & Rotator Mounting Positions

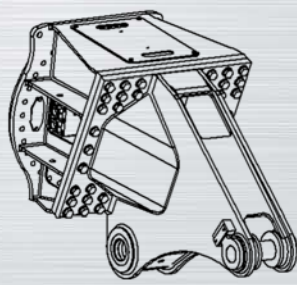


Genesis offers a variety of mounting brackets to meet your application needs. All mounting brackets can be built to OEM spec, multi-machine and/or transport configuration.

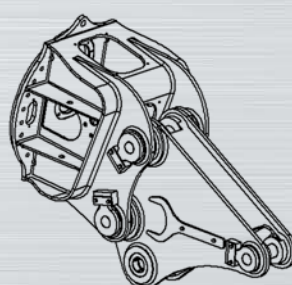
### Second-Member



Standard

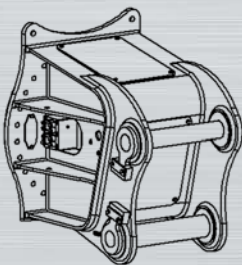


Flat Top

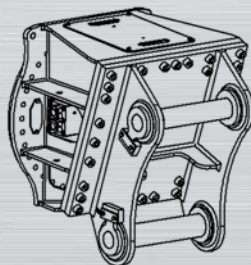


Bracket Adapter  
For use with third-member  
standard bracket

### Third-Member



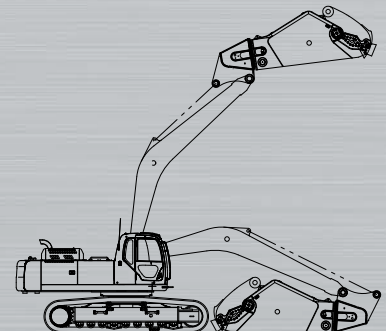
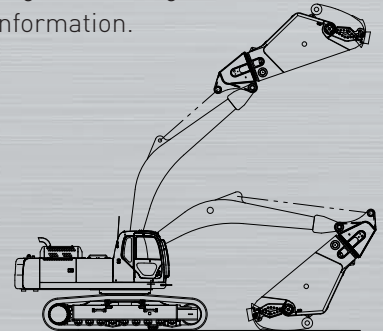
Standard



Flat Top

### Second-Member Standard versus Transport Configuration

Transport bracket designs allow for ease of mobility or maintenance without having to unpin the stick cylinder. Consult your Genesis Regional Manager for more information.





# FIND YOUR LOCAL GENESIS DEALER

VISIT THE DEALER LOCATOR AT GENESISATTACHMENTS.COM

**GENESIS**  
The Promise of Performance.

Products Manuals Where to Purchase Support Literature About Us Contact Us 888-SHEAR IT

US Dealers

54880 FIND

**Genesis World Headquarters**  
1000 Genesis Drive  
Superior, WI 54880  
United States  
[genesisattachments.com](http://genesisattachments.com)  
888-743-2748

Regional Sales Managers International Dealers

## Genesis Attachments

1000 Genesis Drive  
Superior, WI 54880 USA

Toll Free: 888-SHEAR-IT  
(888-743-2748)  
Phone: 715.395.5252  
[info@genesisattachments.com](mailto:info@genesisattachments.com)

## Europe/Africa/Middle East

Genesis GmbH  
Teramostrasse 23  
87700 Memmingen, Germany

Phone: +49 83 31 9 25 98 0  
Fax: +49 83 31 9 25 98 80  
[genesis-europe.com](http://genesis-europe.com)  
[info@genesis-europe.com](mailto:info@genesis-europe.com)

## Asia Pacific Representative Office

24 Upper Serangoon View #12-28  
Singapore 534205

Phone: +65 9673 9730  
[tchoo@genesisattachments.com](mailto:tchoo@genesisattachments.com)



The Genesis Product Catalog is published by Genesis Attachments, 1000 Genesis Drive, Superior, WI 54880. Extracts from this literature may be copied or reproduced only with prior approval from the Genesis Marketing Department and if the originator is credited. Genesis' policy is to continually develop and improve products. The Company reserves the right to change product detail and technical specifications without notice.